



INTERIOR DESIGN

**P O R
T F O
L I O**

Jun Yong Cheol

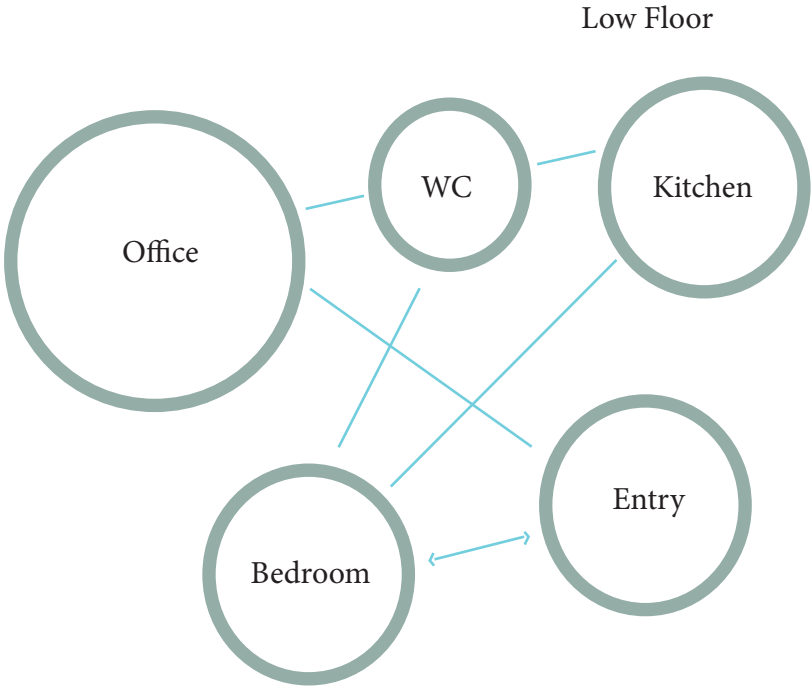
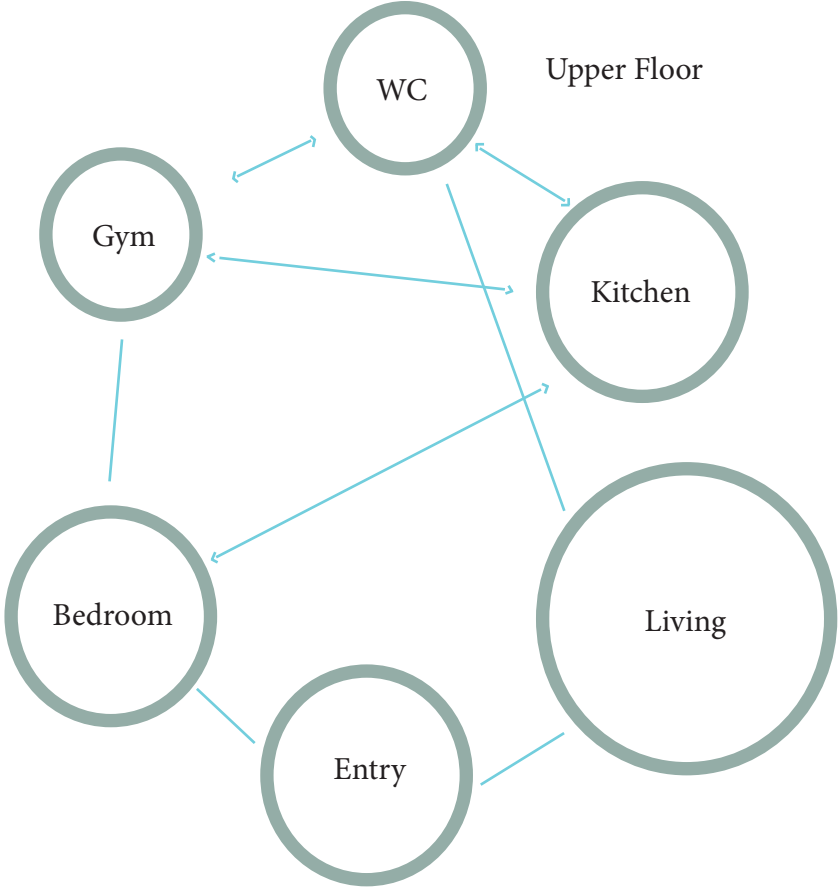


3

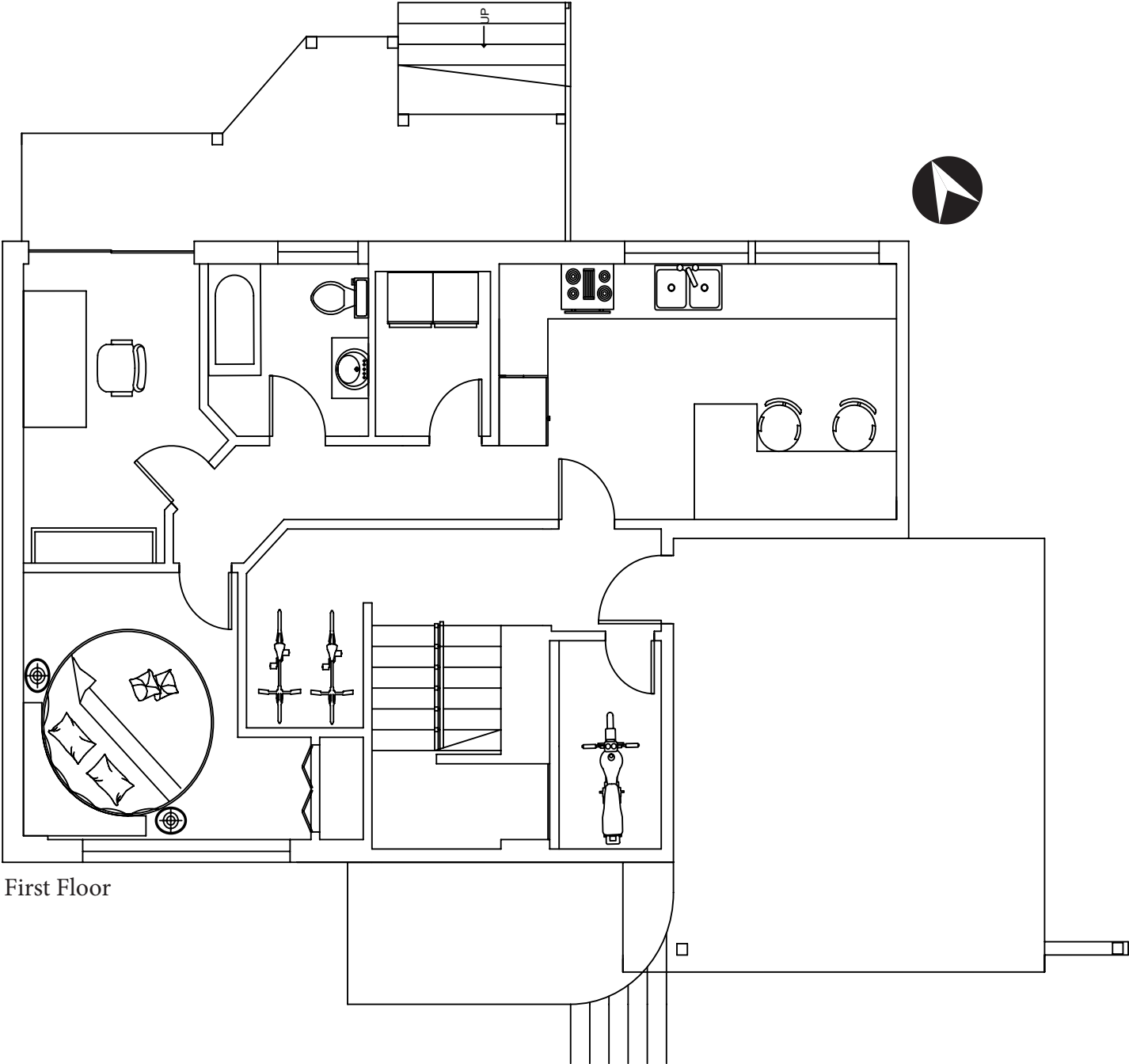
RESIDENCIAL

This project is designed based on the character Indiana Jones and will be design Industrial design. The house has two floors surrounded by many windows to take advantages of a beautiful scenery from the front to the back.

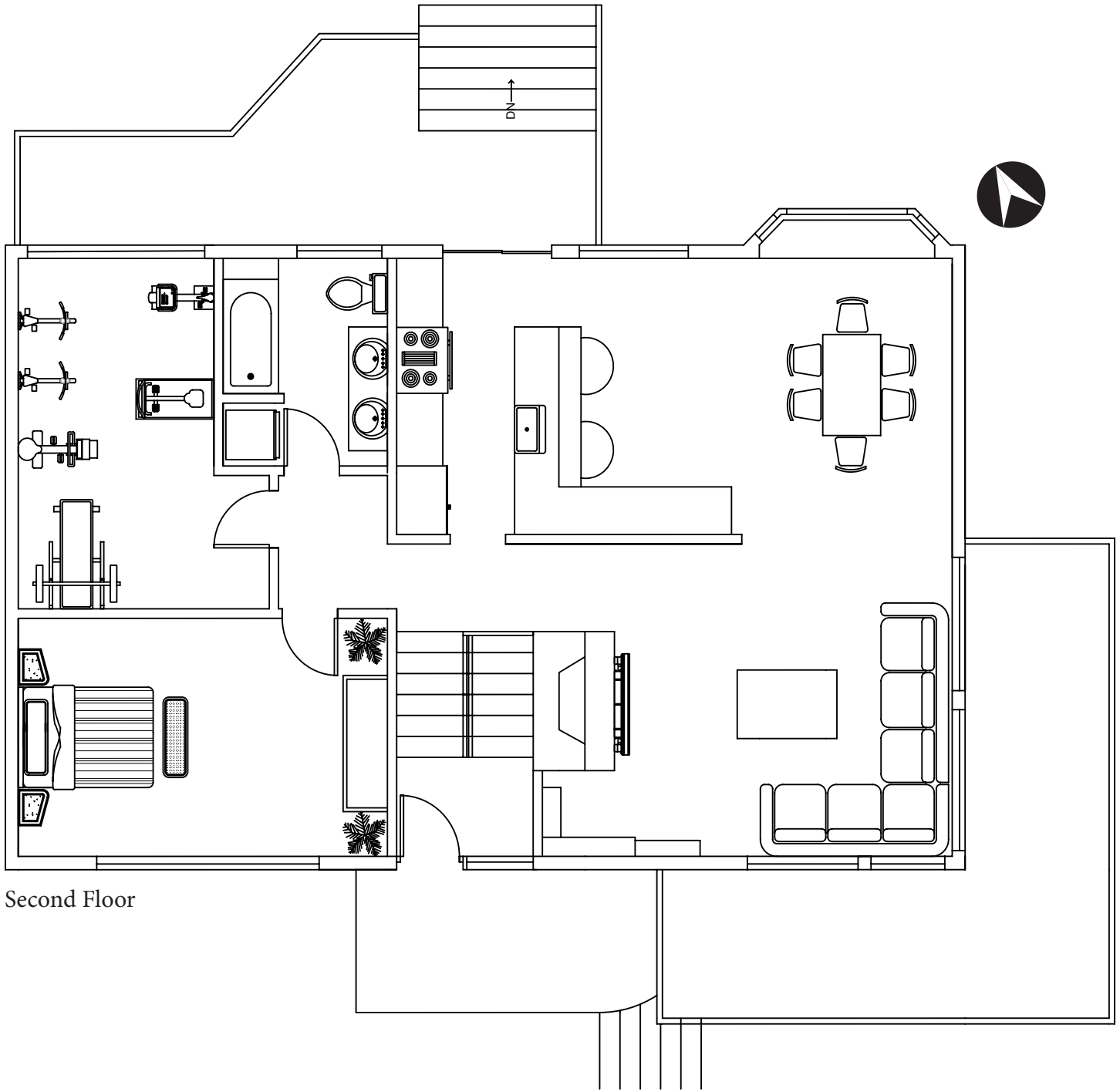
BUBBLE DIAGRAM



FLOOR PLAN

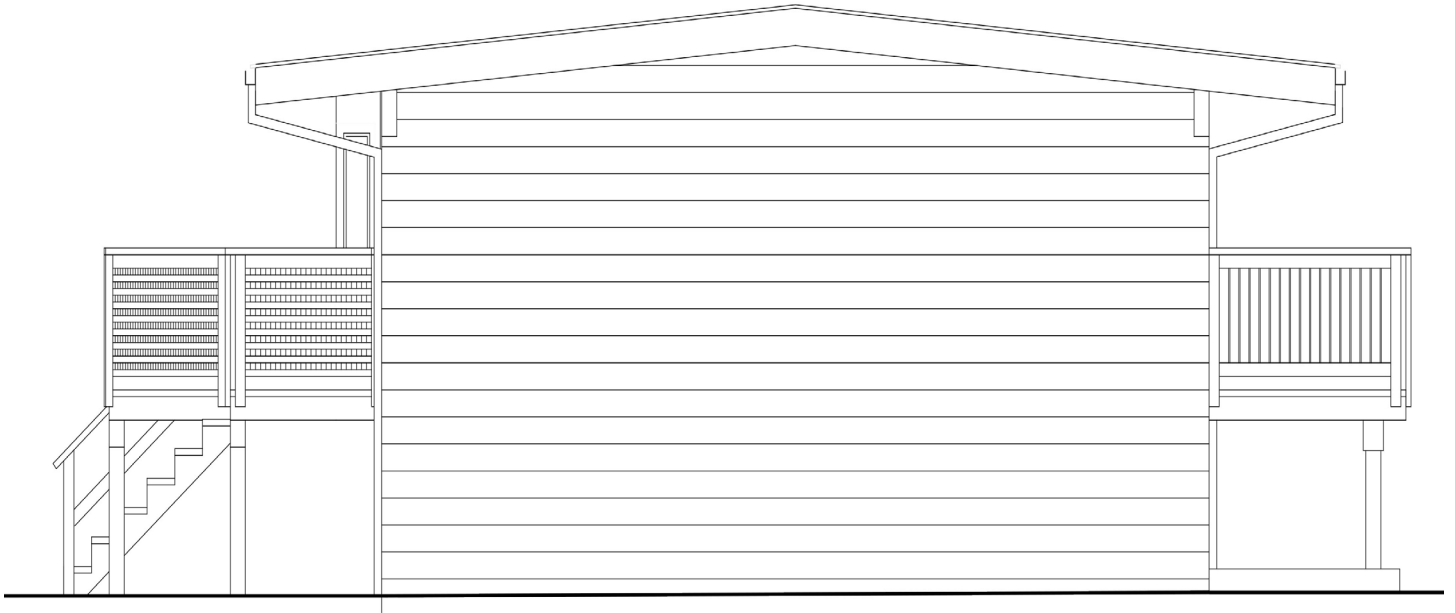


First Floor



Second Floor

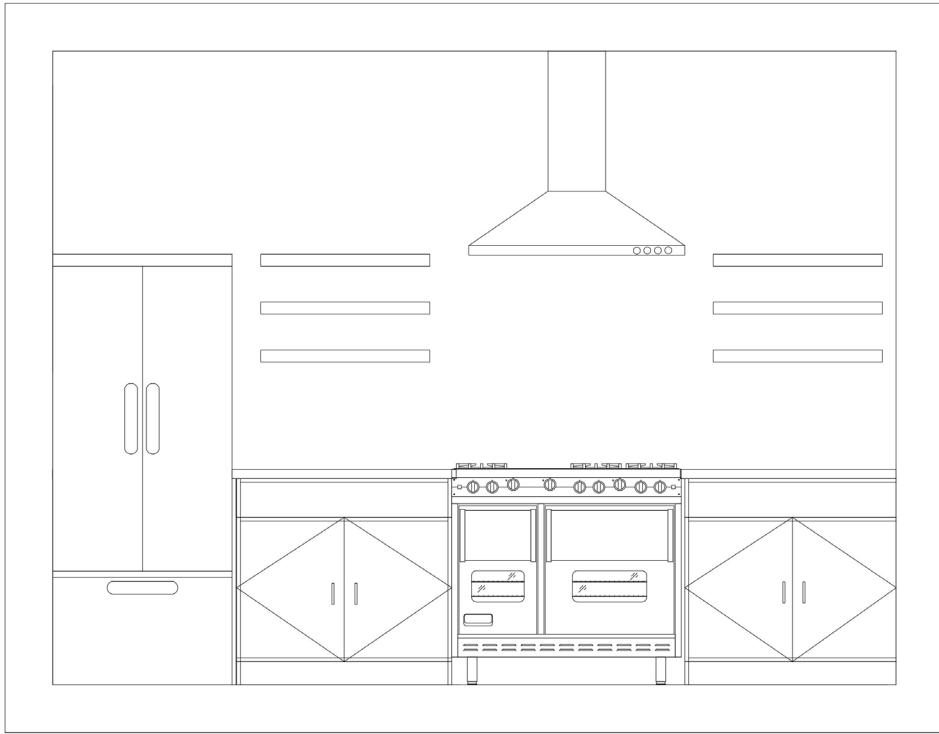
SECTION & ELEVATION



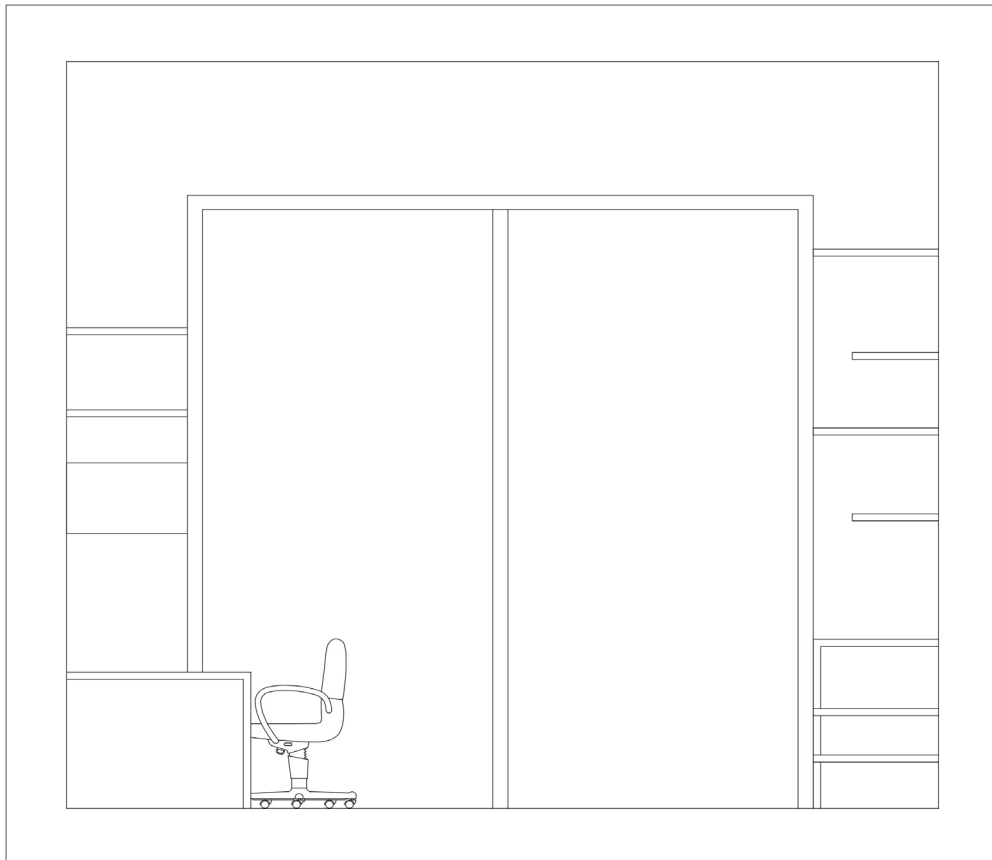
Section A



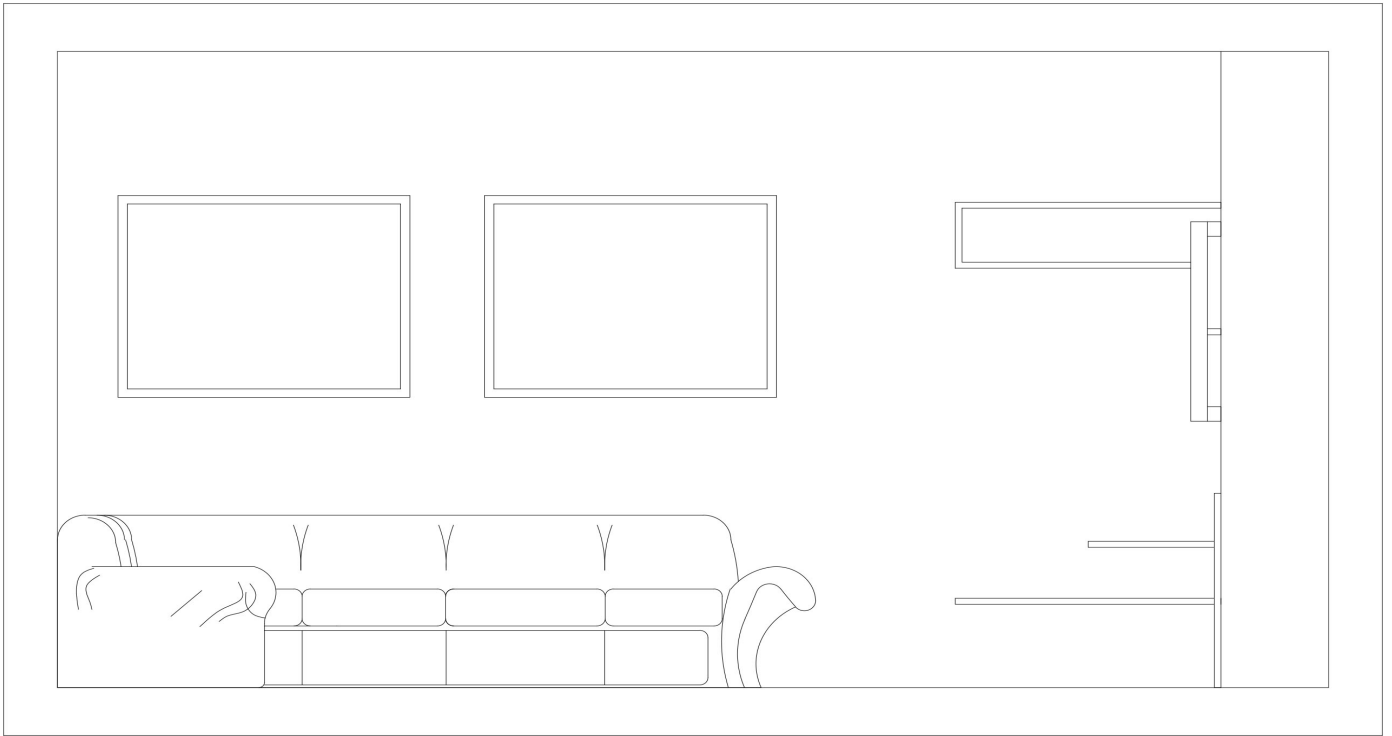
Section B



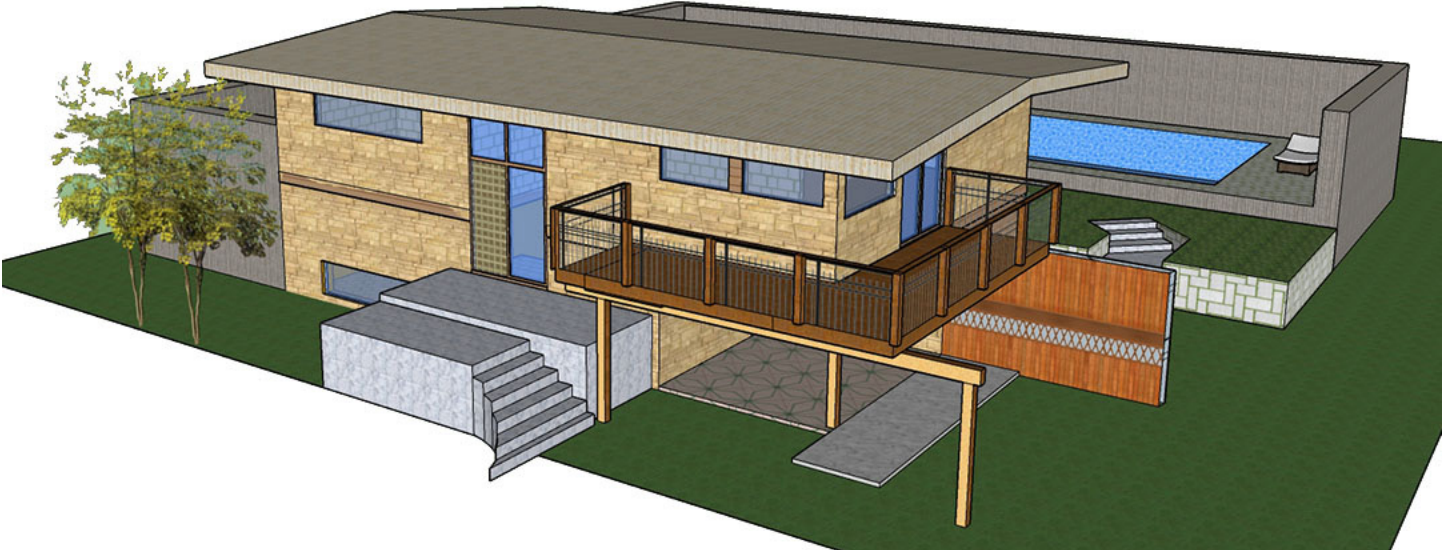
Elevation A



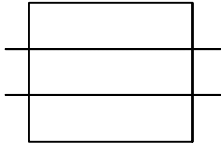
Elevation B



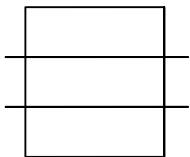
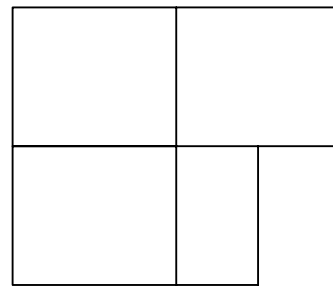
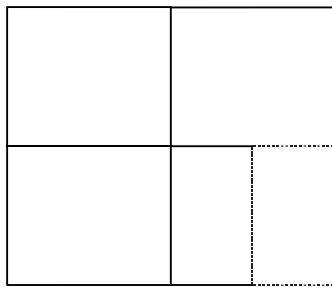
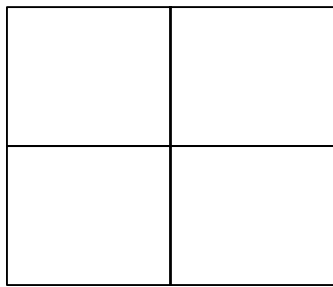
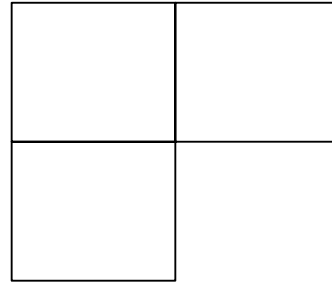
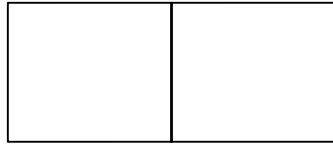
Elevation C



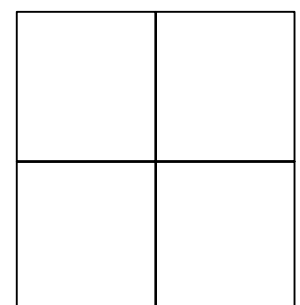
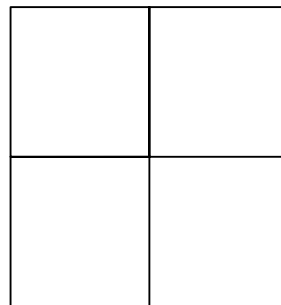
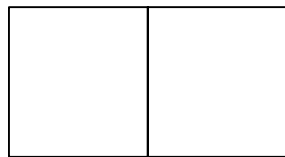
GEOMETRIC ANALYSIS



Low Floor



Upper Floor



3D PERSPECTIVE

BedRoom



Living Room





Kitchen



Kitchen

