

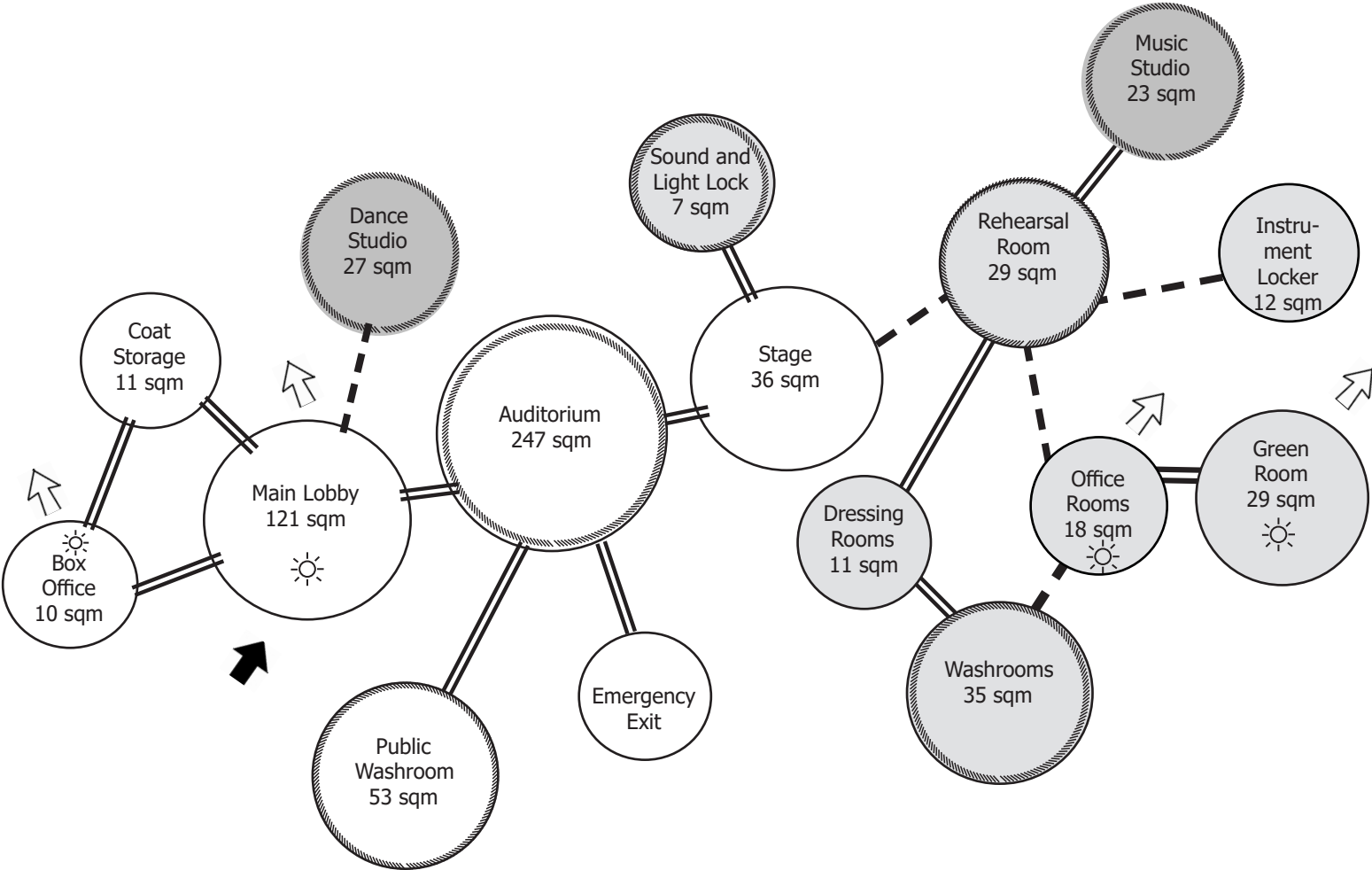
02

SENIOR PROJECT 2





RELATIONSHIP DIAGRAM



LEGEND

- Semi public
- Private
- Public
- Should be
- Must
- Acoustic
- Entry
- View
- Daylight

CRITERIA MATRIX

Name	Size SQM	Public Access	Daylight/View	Privacy	Special Considerations
Primary Area					
Main Lobby	121	Y	Y	N	
Box office	10	N	N	Y	
Coat Storage	11	N	N	Y	
Public Washrooms	53	Y	N	Y	Female washroom Male washroom Wheelchair access Sound isolation
Auditorium	247	Y	N	N	Emergency Exit Acoustic Front row for wheelchairs
Emergency Exit		Y	N	N	Easy for everyone to access
2 hallways		Y	N	N	
Stage	36	N	N	Y	Acoustic Non-slip Flooring
Supportive Area					
Instrument Locker	12	N	N	Y	
Green Room	29	N	Y	Y	
Rehearsal Rooms	29	N	N	Y	Acoustic
Dressing Rooms	11	N	N	Y	Multiple Rooms
Sound and Light Lock	7	N	N	Y	
Office Rooms	18	N	Y	Y	
Staff Washrooms	35	N	N	Y	Female washroom Male washroom Sound isolation
Dance Studio	27	Y	N	N	Acoustic Proper floor material
Music Studio	23	N	N	Y	Soundproof

LEGEND

N No
Y Yes

FINISHES SELECTION



Stone Veneers



Glass

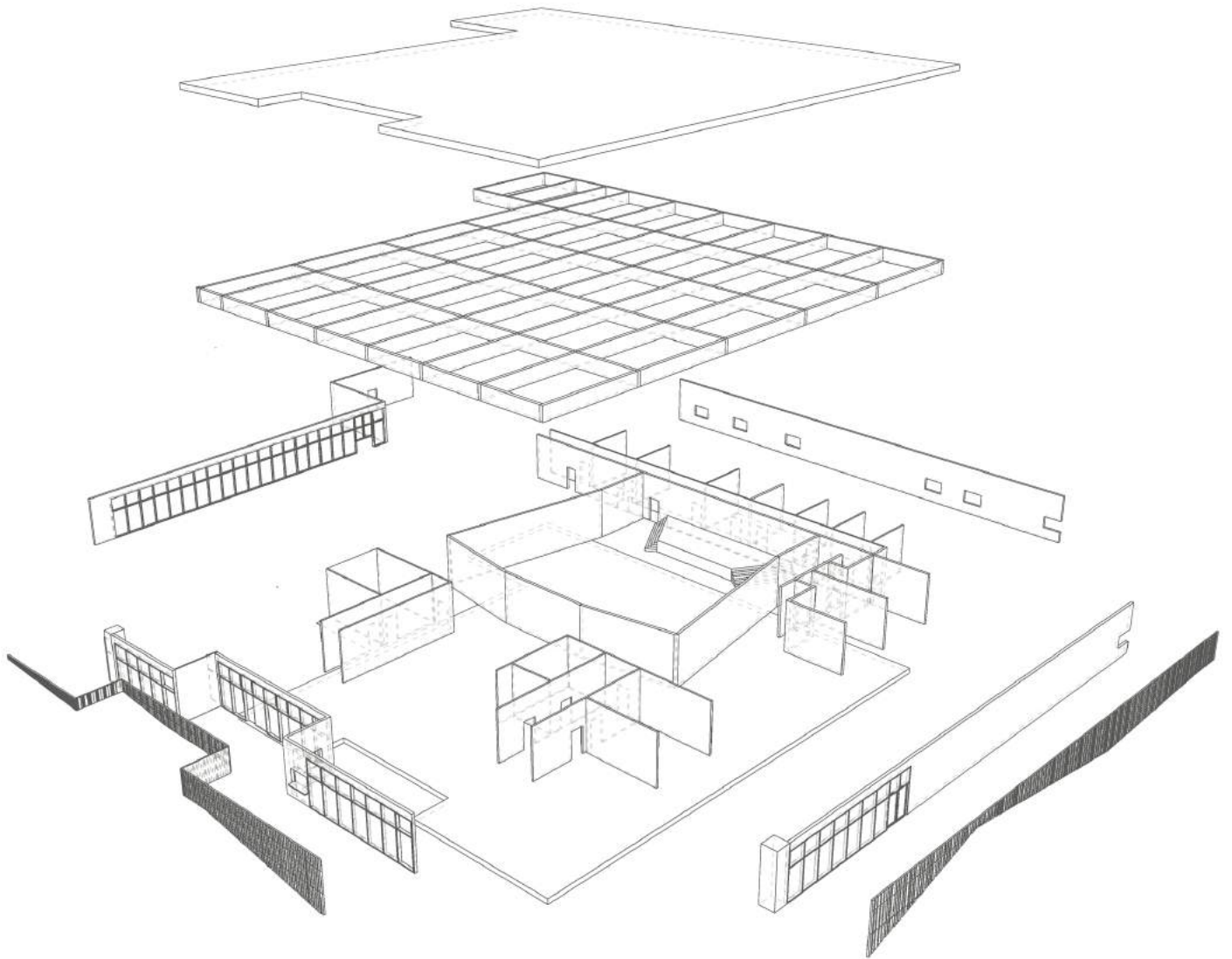


Wood Timber

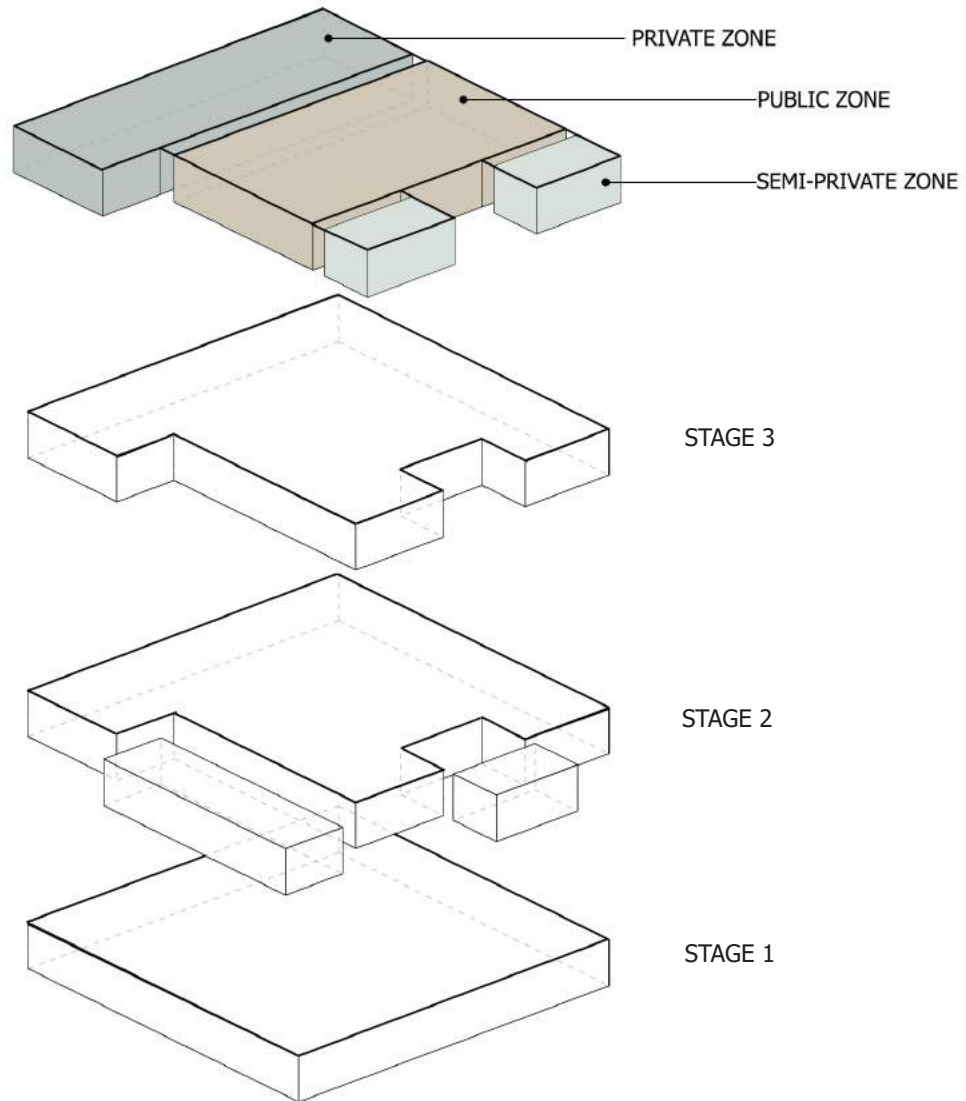


Glass Fiber Concrete

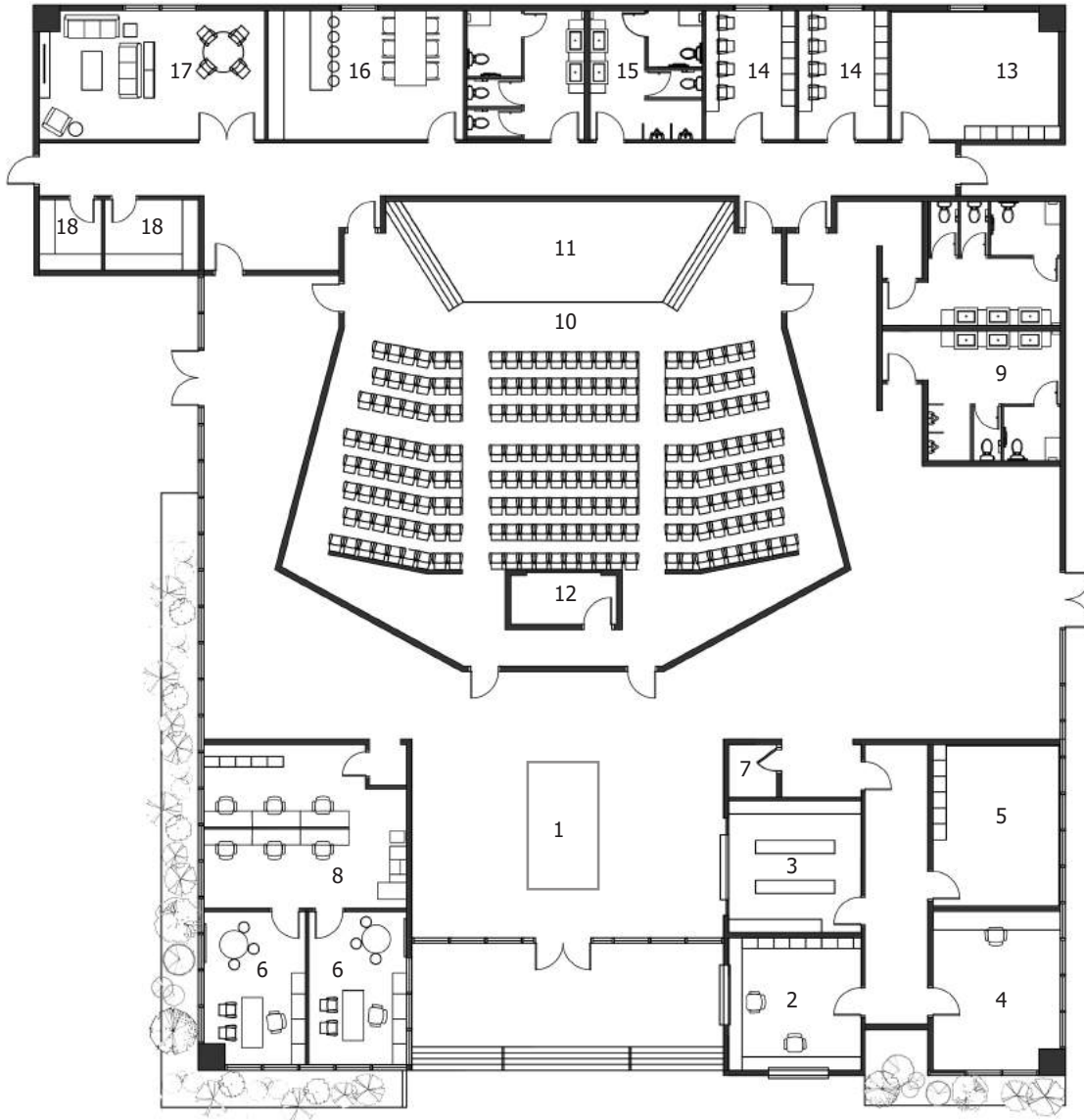
AXONOMETRIC



DIAGRAMMATIC APPROACH



FLOOR PLAN

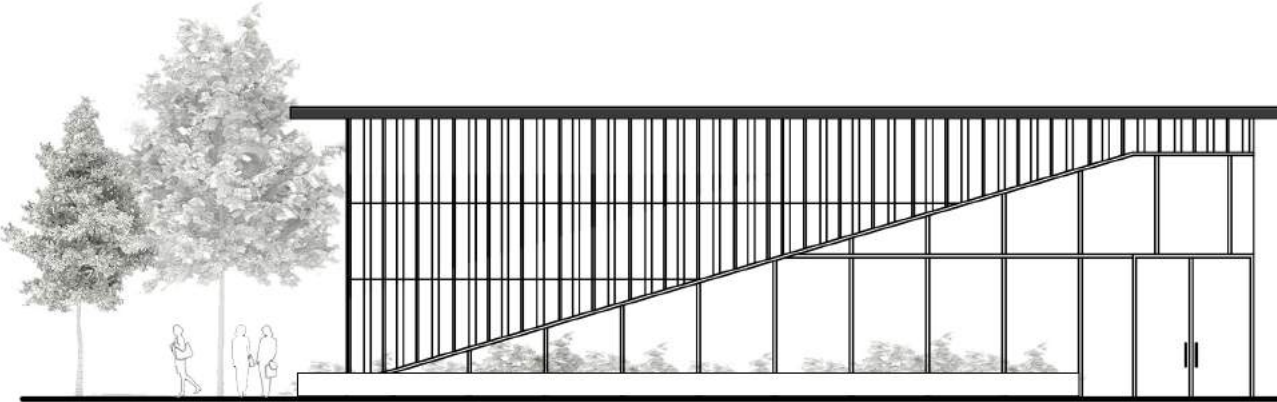


LEGEND

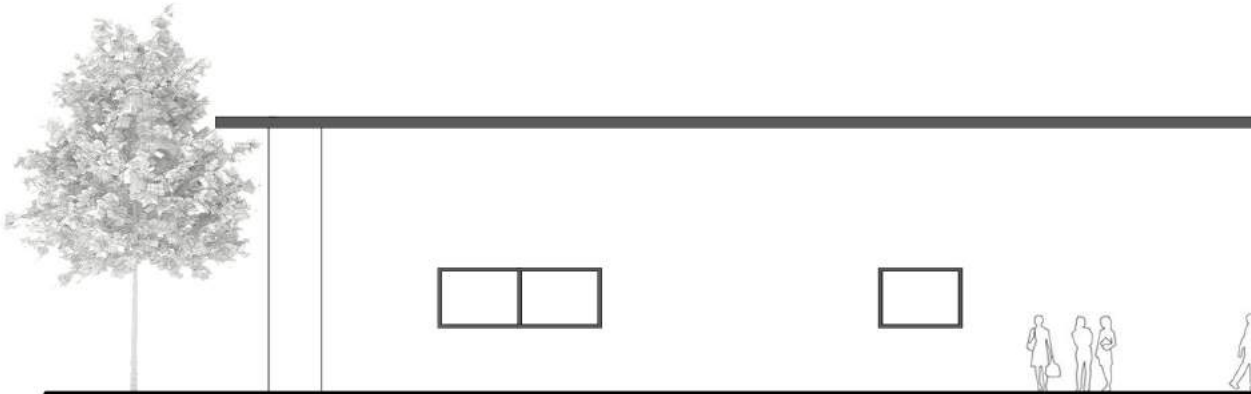
1. Terrarium Room
2. Box Office
3. Coat Storage
4. Music Studio
5. Dance Studio
6. Office Rooms
7. Electrical Room
8. Workstations
9. Public Washrooms
10. Auditorium
11. Stage
12. Projector Room
13. Rehearsal Room
14. Dressing Rooms
15. Staff Washrooms
16. Kitchen
17. Green Room
18. Storage



ELEVATIONS/ SECTIONS

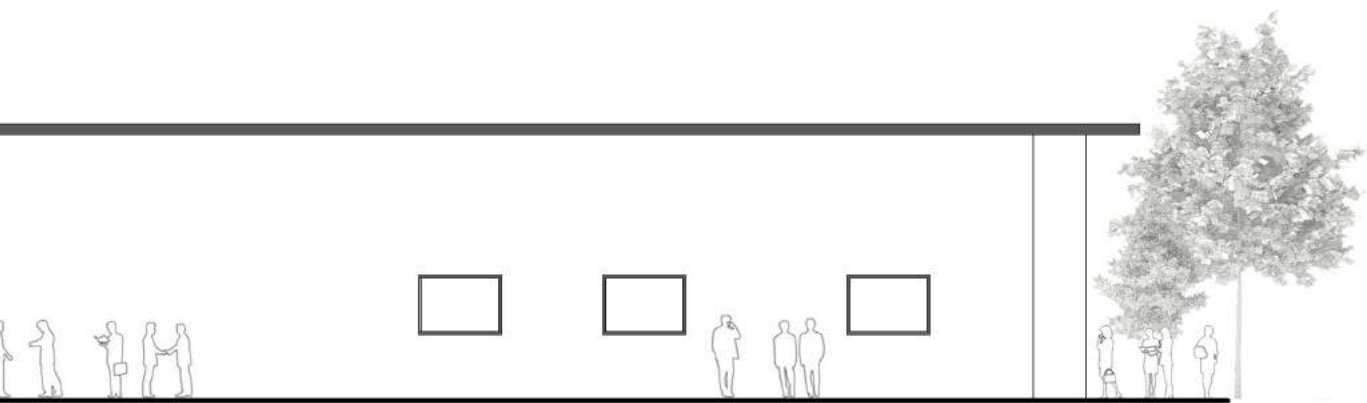
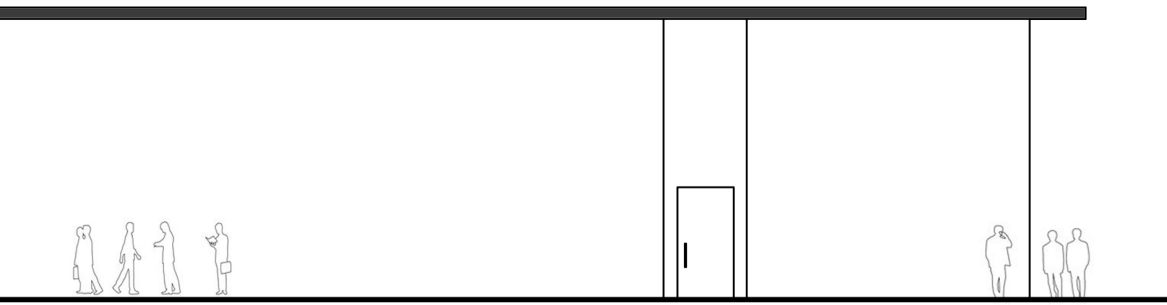


Exterior Elevation 1

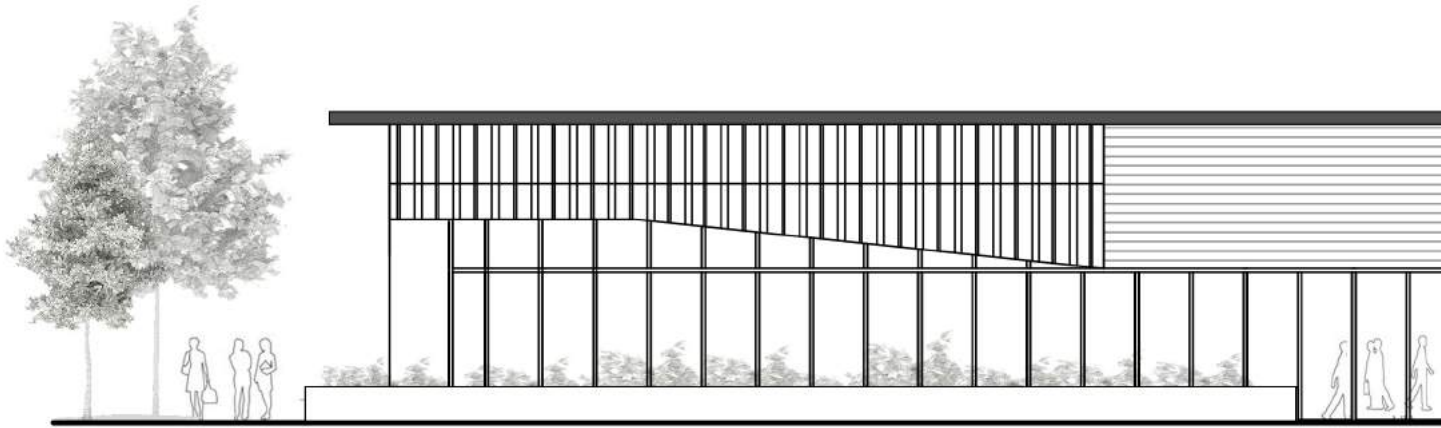


Exterior Elevation 2

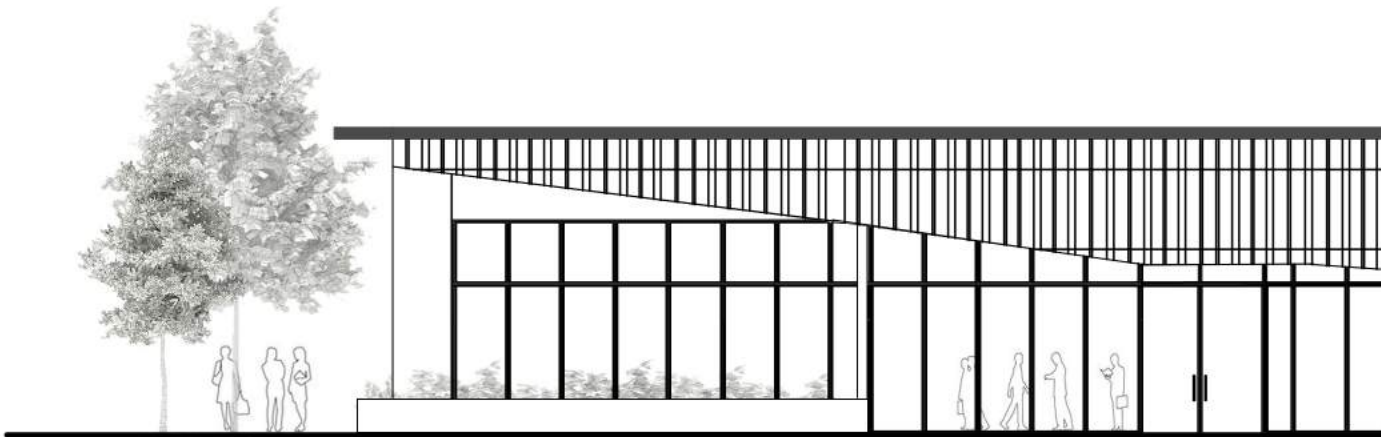




r
DM

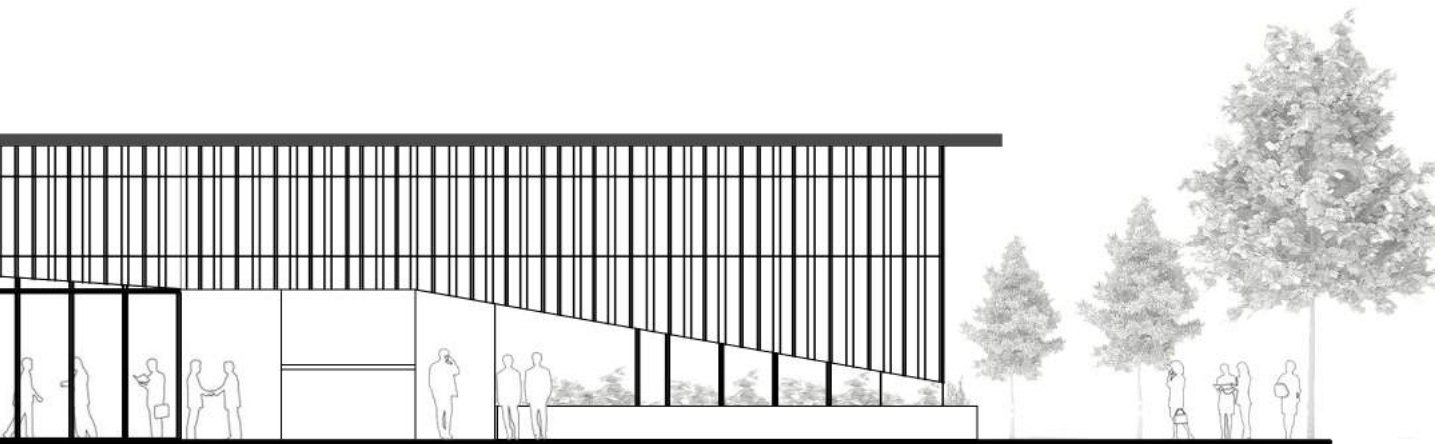
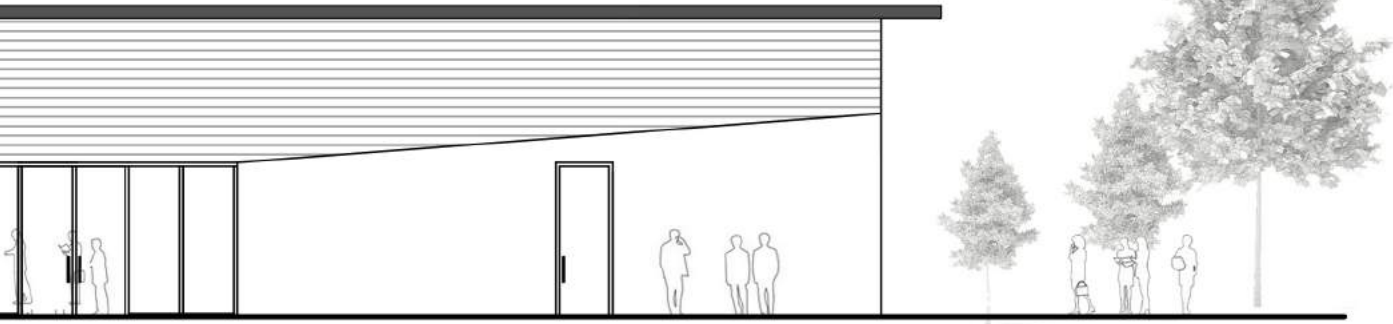


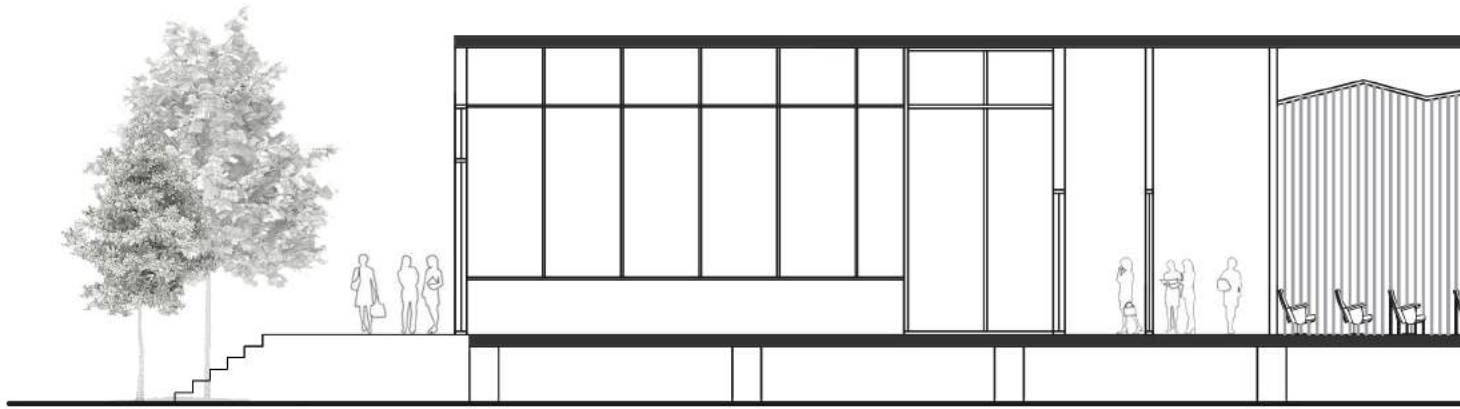
Exterior Elevation 3



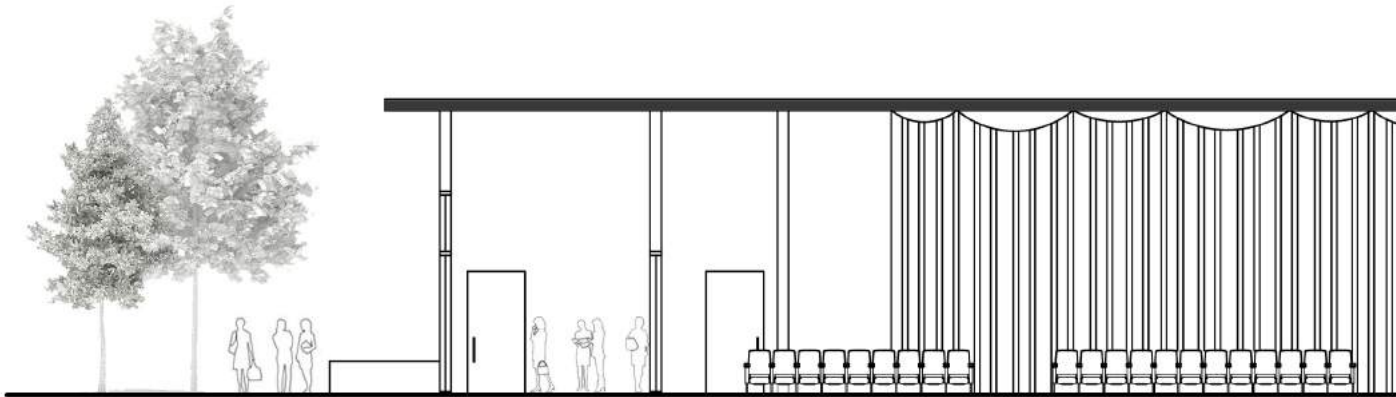
Exterior Elevation 4





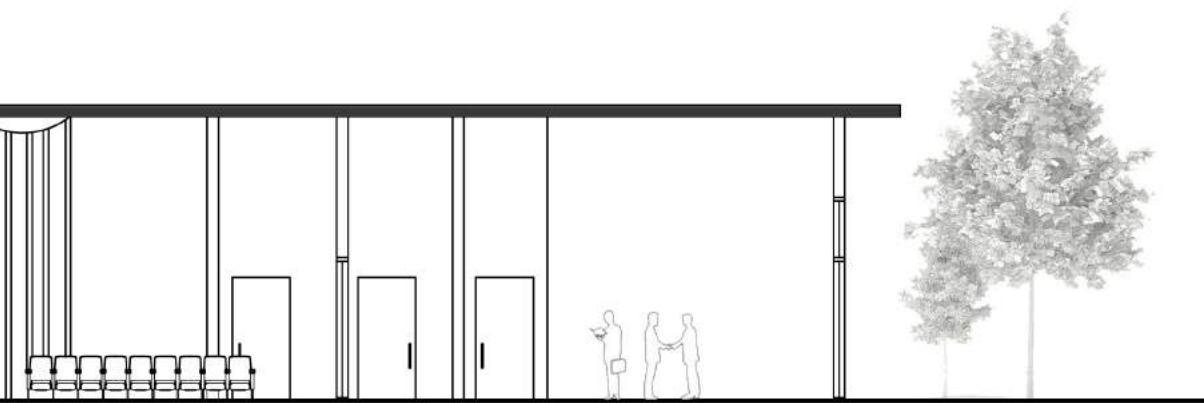
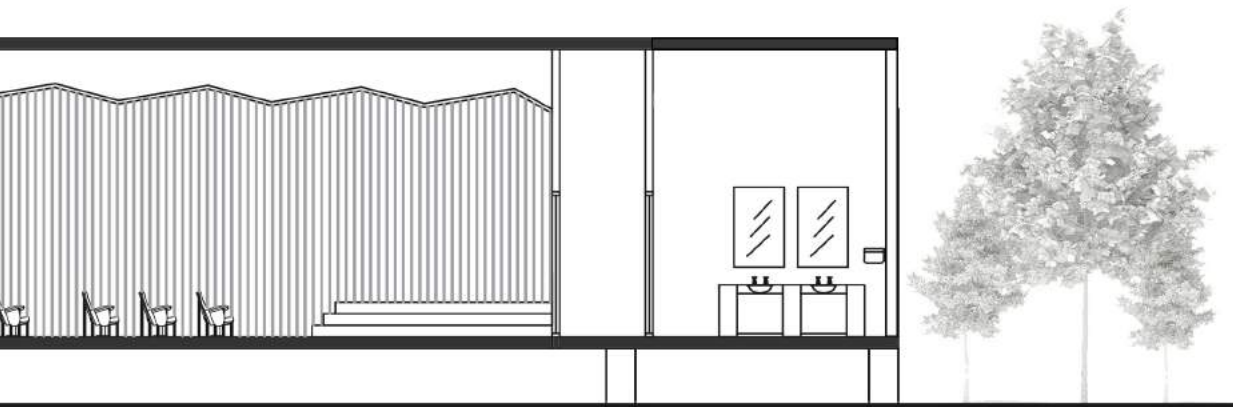


Side Section 1



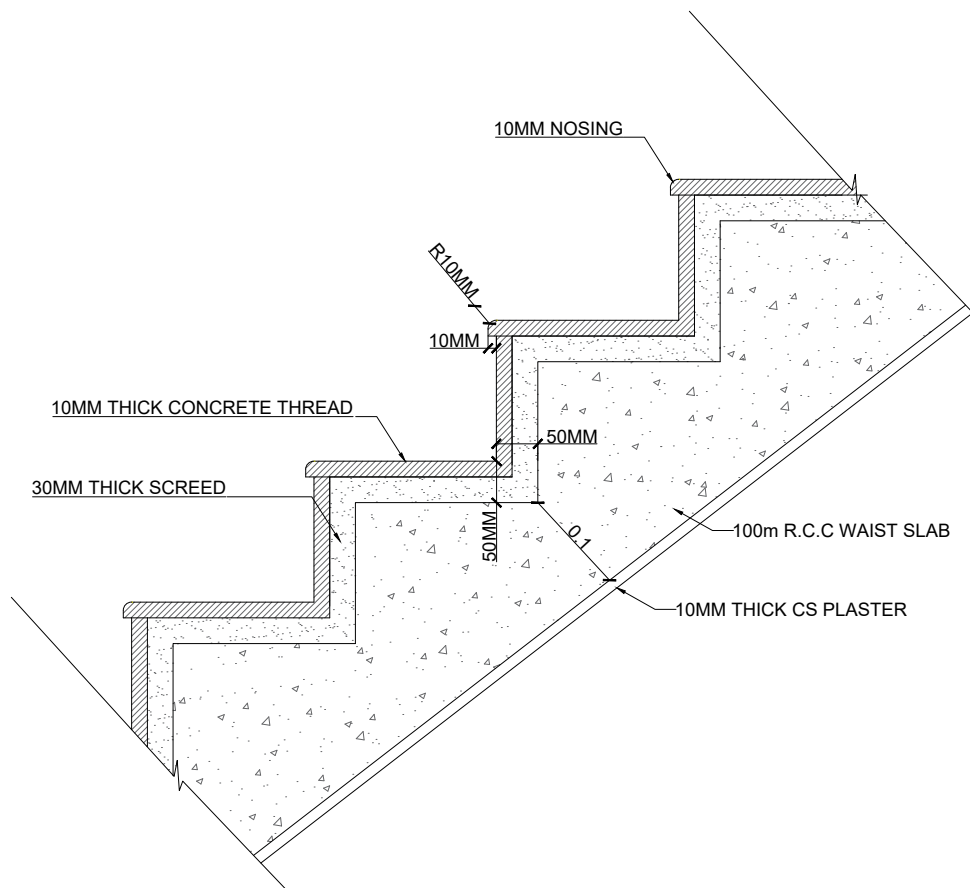
Side Section 2



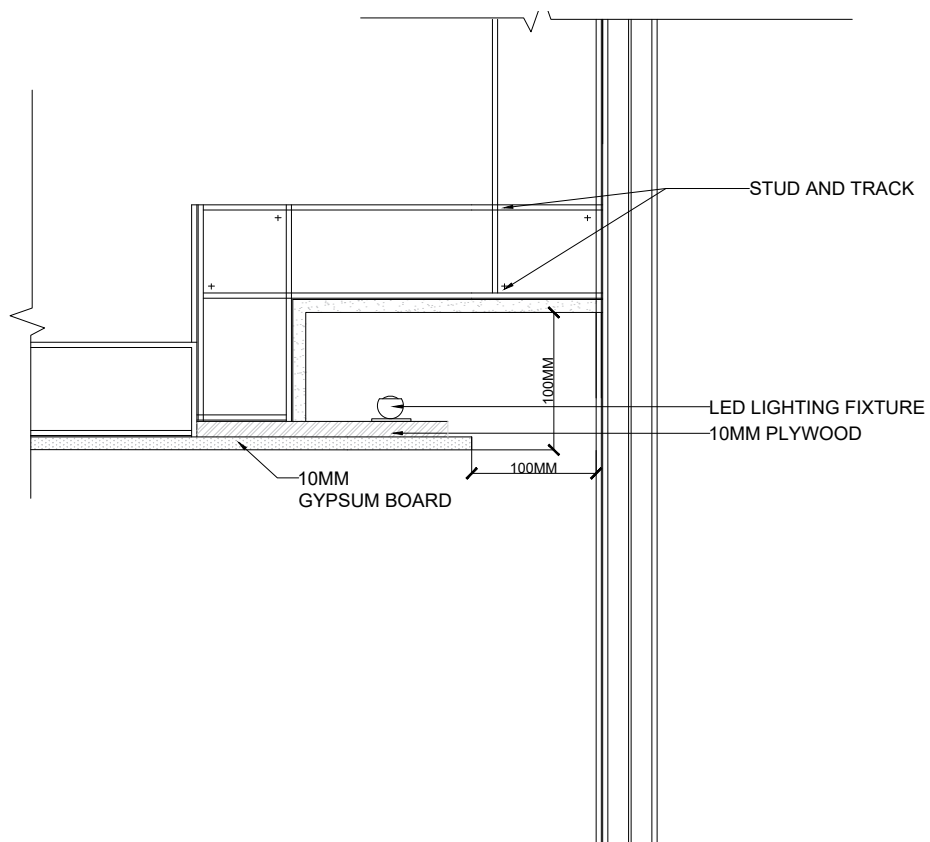


DM

DETAILS



Concrete Stair Detail



Cove Ceiling Detail



Main Auditorium 1



Main Auditorium 2



Exterior View



Exterior View



Lobby Design



Hallway Perspective