



**LASALLE**  
**COLLEGE**  
INTERNATIONAL

# ASSIGN 5&6: ILLUSTRATION & TECHNICAL DRAWING ( DIGITAL )

Date Submission: 14 April 2021

**REZA WIDJAJA**

Class: FD 2.1

FASHION CONCEPTS

571-KNP-05

LECTURER: **Marasmi Apsari**

SAHID OFFICE BOUTIQUE Unit D – F  
Komp. Hotel Sahid Jaya  
JL. Jend. Sudirman Kav.86, Jakarta 10220  
Telp: +62 21 5785-1819  
Fax: +62 21 5785-1820

E-mail: [infojkt@lasallecollege.ac.id](mailto:infojkt@lasallecollege.ac.id)  
Website: [lasallecollege.ac.id](http://lasallecollege.ac.id)

# MOODBOARD

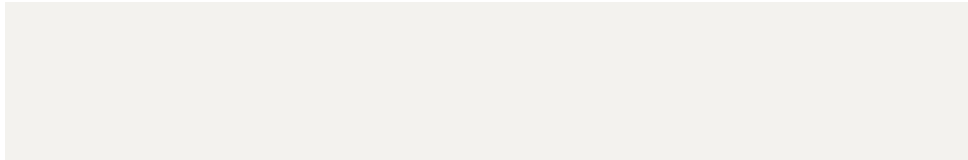


# COLOR CHART

---

S/S 21

C01



PANTONE 663 C

C02



PANTONE 2312 C

C03



PANTONE 5025 C

C04



PANTONE 5015 C

C05



PANTONE 543 C

C06





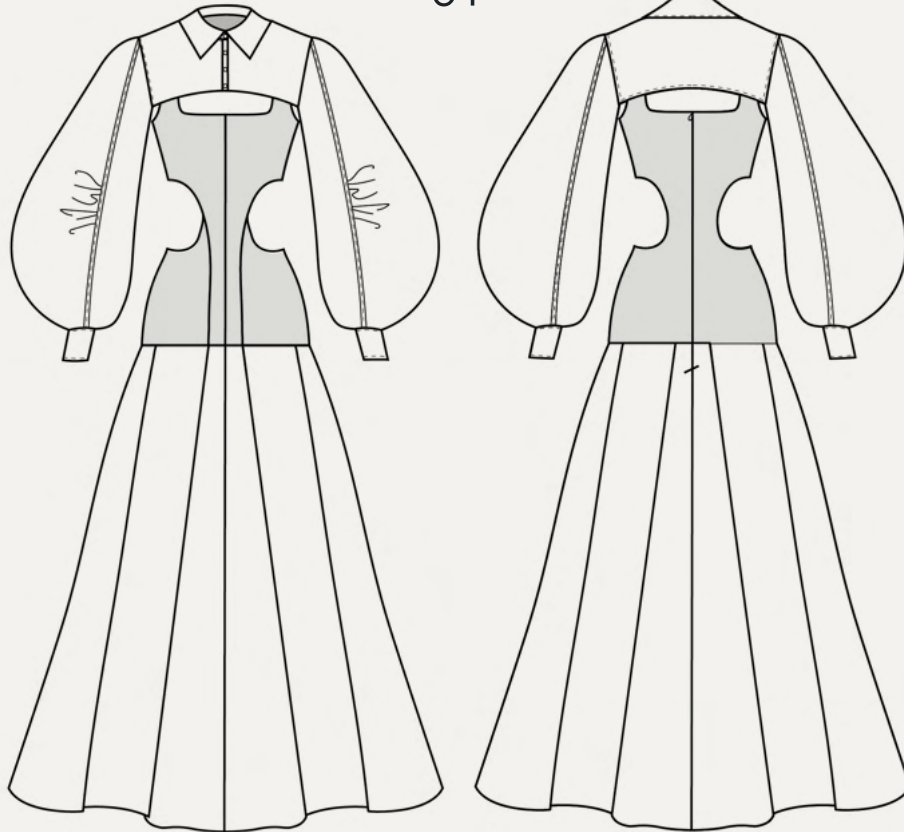
# TECHNICAL SHEET

S/S 21

FRONT

01

BACK



## COLOR CHART



C03

C04

## FABRIC CHART



F01

F02

## TRIM CHART



T02



T04

## DESCRIPTION

- Detachable high cropped top with open shirt collar and front cover button hole opening.

- Oversize balloon sleeve with front and back seam which have gathers in the middle with sleeve cuff.

- Sleeveless square neckline dress with long torso princess line to side seam cut out under bust line with center back 60 cm invisible zipper opening.

- Calf length skirt with 2 pleats on the center front and pleats on side seam.





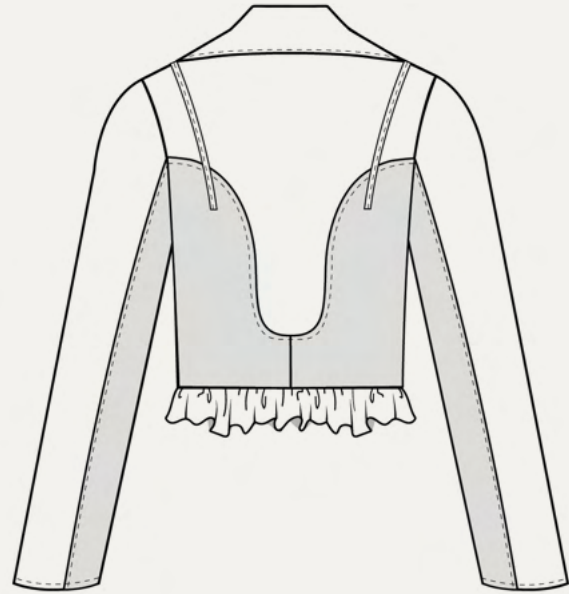
# TECHNICAL SHEET

S/S 21

02

FRONT

BACK



## COLOR CHART

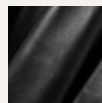


C05

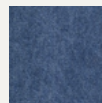


C06

## FABRIC CHART



F03



F04

F05

## TRIM CHART



T01



T06



T07



T09

## DESCRIPTION

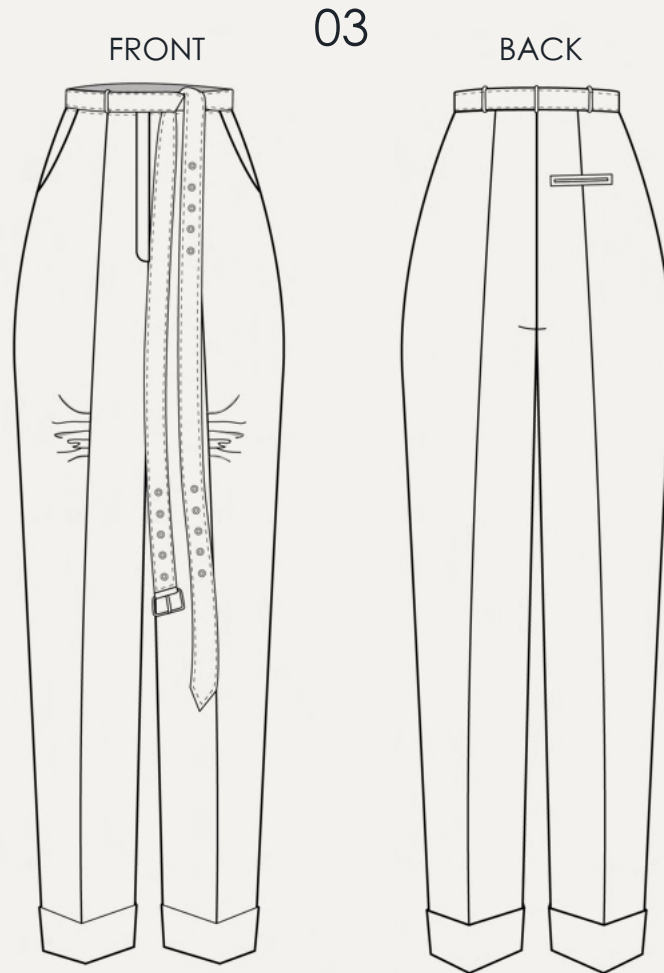
- Slim fit leather jacket with oversized tailored collar with snap buttons, asymmetrical one snap button opening with 2 princess line styling line, diagonal bust 7 cm embellished zip and princess line to center front 5 cm width styling belt. With back yoke.

- Front and back sleeve cutting with 7 cm sleeve hem zipper at front and 5 cm tulle ruffles at the jacket hem. .

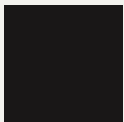


# TECHNICAL SHEET

S/S 21

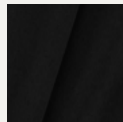


## COLOR CHART



CO6

## FABRIC CHART



F06

## TRIM CHART



T03



T05



T09



T07

## DESCRIPTION

- High-rise, cropped length tailored for a loose fit, 5 cm tapered fold at the hem and pressed with neat creases down the front with pleats in the thigh area.

- Concealed button, hook and 14 cm zip fastening at front with side seam pocket on front, back jetted pocket, 4 cm waistband and 4 cm width and about 190 cm length belt on waist.







# TECHNICAL SHEET

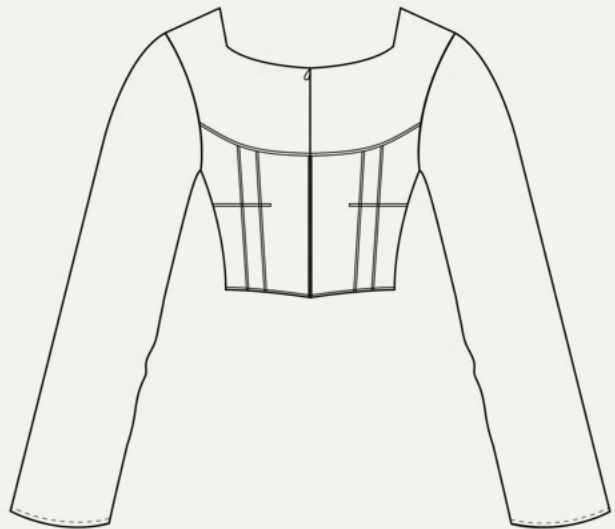
S/S 21

04

FRONT



BACK



## COLOR CHART



C04

## FABRIC CHART

F07

## TRIM CHART



T02

## DESCRIPTION

- Stretch-fit Knit top with oversized straight balloon sleeves with bustier-style panels at the chest and back.

- With curved hem line from side seam to center front and center back invisible zipper opening .

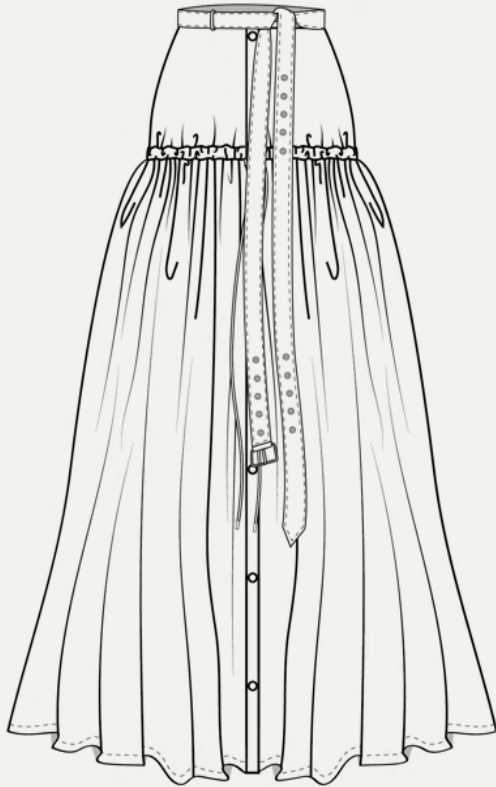


# TECHNICAL SHEET

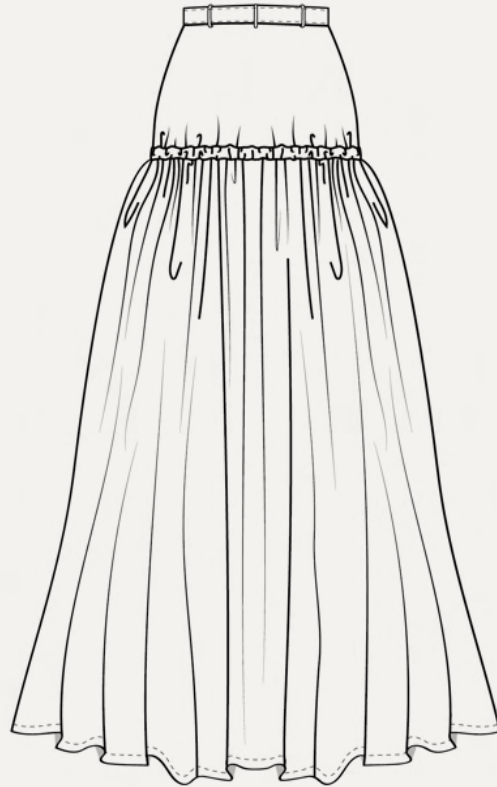
S/S 21

05

FRONT



BACK

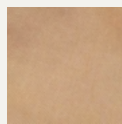


## COLOR CHART



C02

## FABRIC CHART



F01

## TRIM CHART



T04



T07



T09



T08

## DESCRIPTION

Skirt with waist to hip yoke, center front cover button hole opening.

- Midi-length, designed to be worn at the waist with ruched Drawstring at the hip. 4 cm waistband and 4 cm width and about 190 cm length belt on waist



