



DARON TABANA O

ABOUT ME

I have learned to work in teams, the experience of being with a group of people with different perspectives.

I learned to create garments from trend based and to create a collection with no limit to my creation.

I developed new skills and found interest in different areas of fashion.

I'm very passionate about Fashion.

T A B L E O F C O N T E N T

1. ORDER PROJECT:

This is project was based on a trend that was given by a creative director and we had to create our own concept and idea and design looks based on the different trends.

2. COLLECTION PROJECT:

We had to create a collection within a group of 6 people, It was a project that we learned how to work with people who had different ideas and different interest.

3. CREATIVITY PROJECT:

We're given a word, which was "Invisibility", and we had to create a collection and they had no limits to what we want to create.



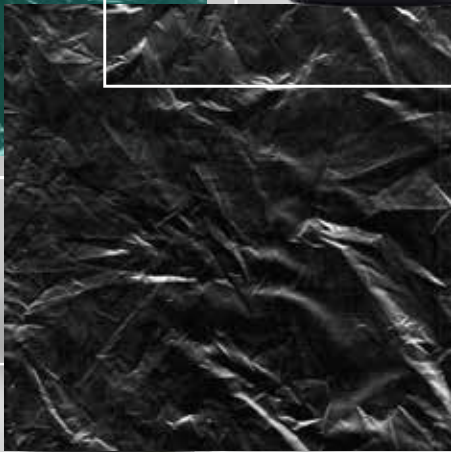
ORDER PROJECT

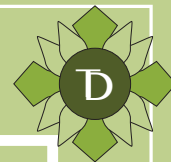
My trend for my Order Project is called “Reality Check”. It is a combination of a medical uniform and lounge wear. The colour is inspired by the green screen. Reality check is the juxtaposition of reality and image.



RESEARCH
DEVELOPMENT



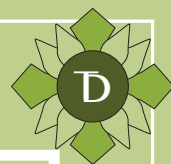




ILLUSTRATION

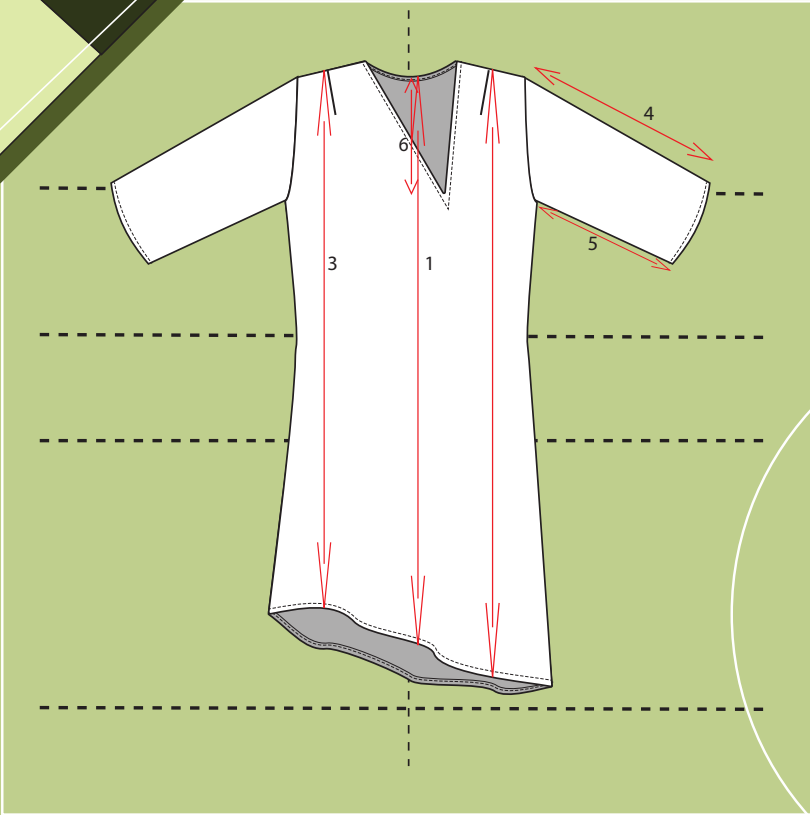
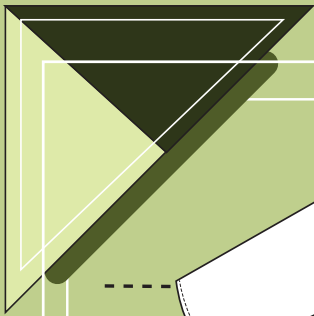




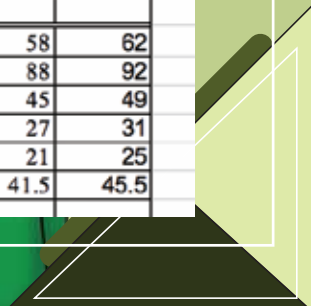
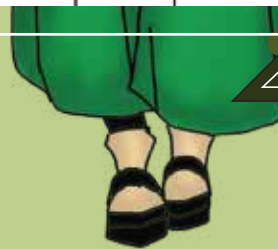


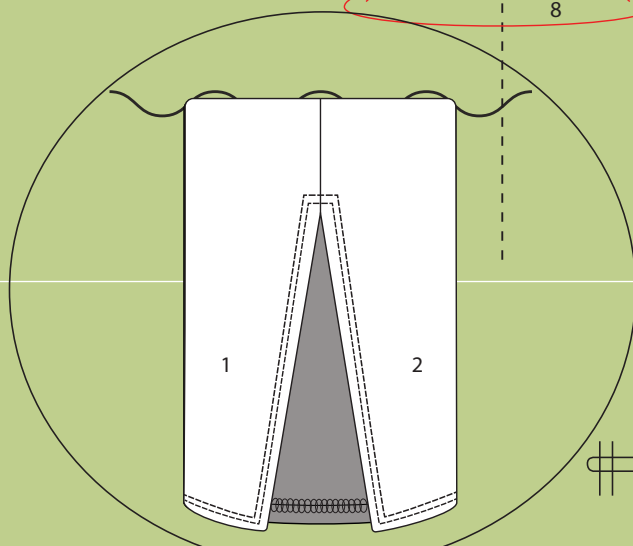
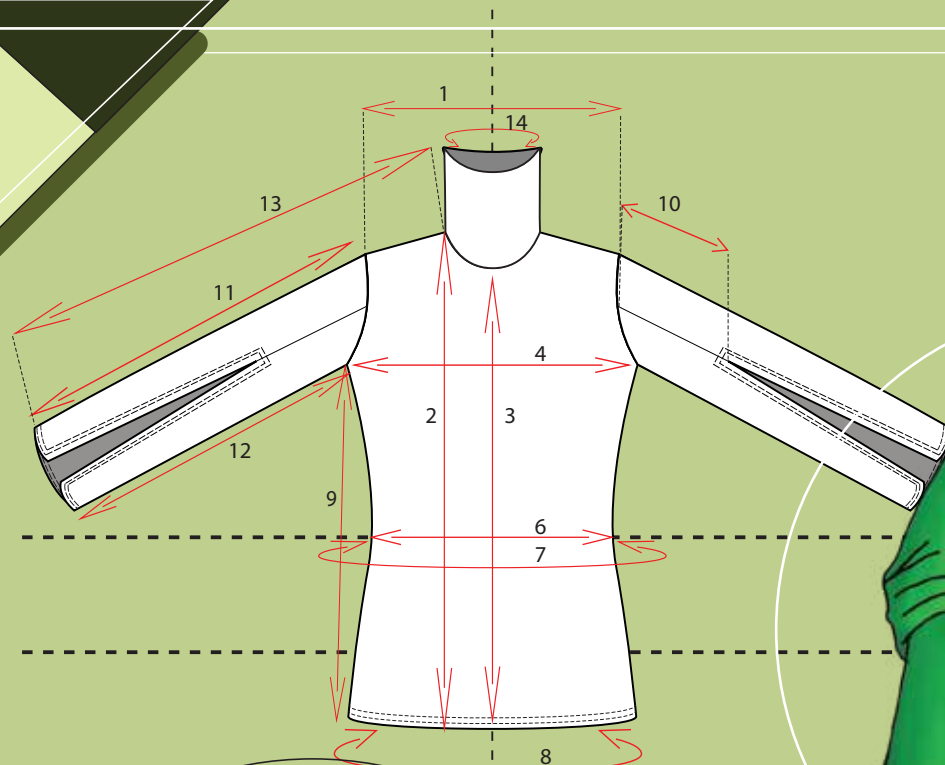
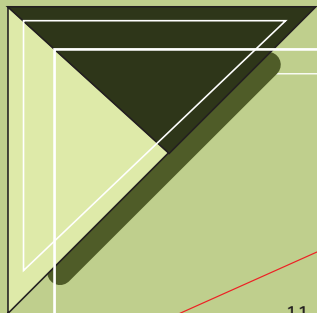
TECHNICAL



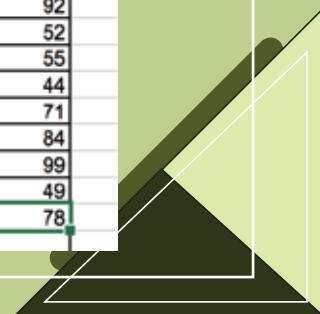


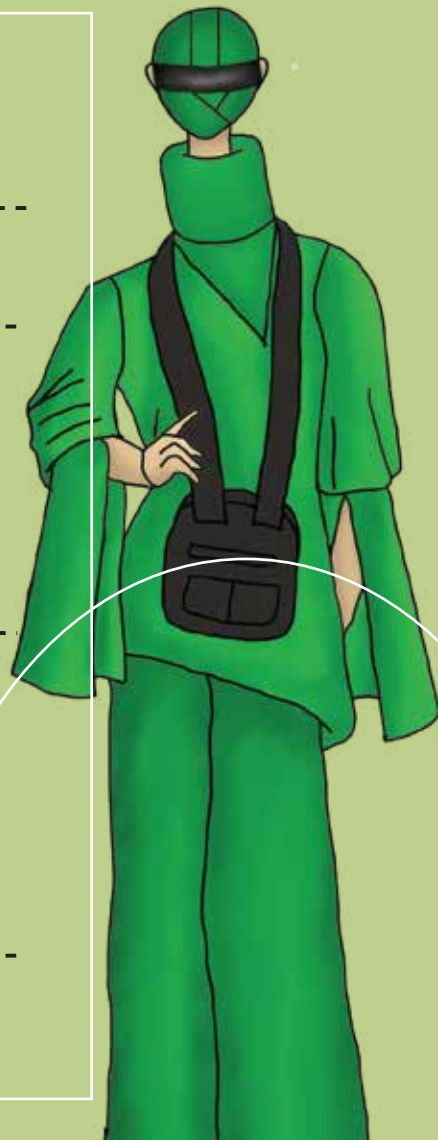
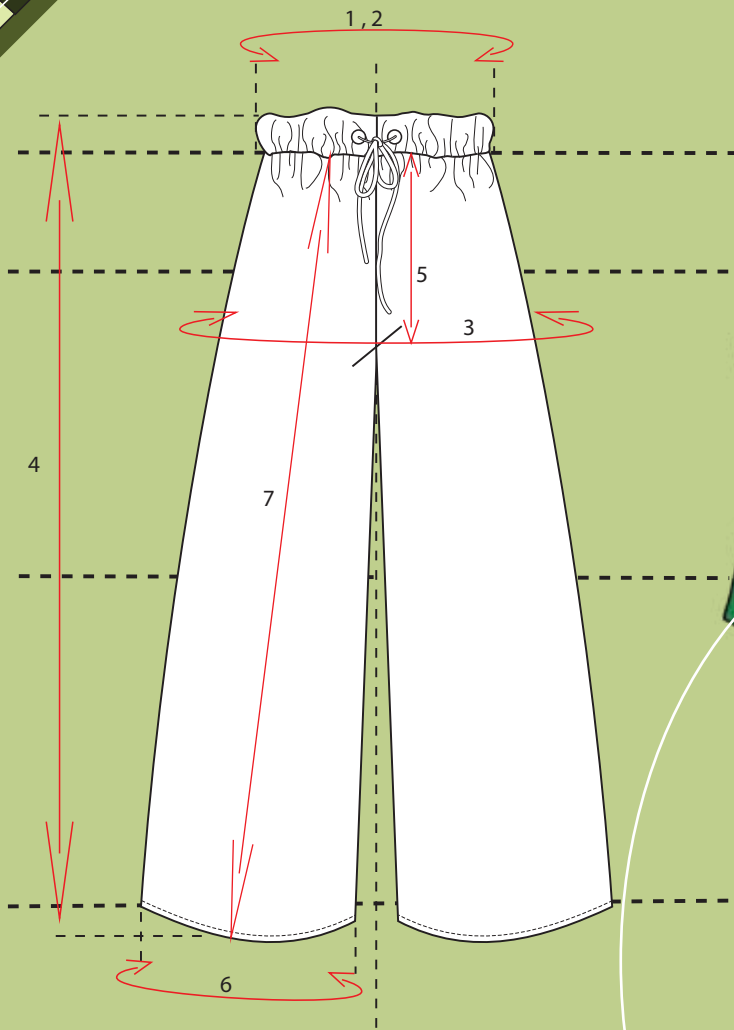
sizes	TOLERANCE		Comments	S	M	L	X	XL	
	-	+							
Points of Measure									
1	Center Front	1	2		46	50	54	58	62
2	Left shoulder point to hem	1	2		76	80	84	88	92
3	Right shoulder point to hem	1	2		33	37	41	45	49
4	Sleeve	1	2		15	19	23	27	31
5	Sleeve side seam	1	2		9	13	17	21	25
6	front neckline drop	1	2		29.5	33.5	37 1/2	41.5	45.5
7									



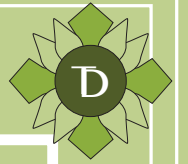


#	sizes	TOLERANCE		Comments	S	M	L	X	XL
		-	+						
	Points of Measure								
1	Shoulder to shoulder (front)	1	2		26	30	34	38	42
2	High shoulder point to hem	1	2		65	69	73	77	81
3	Center Front	1	2		59	63	67	71	75
4	Chest flat (1" below armhole) (2.5cm)	1	2		36	40	44	48	52
5	Chest Circumference (1" below armhole) (2.5cm)	1	2		76	80	84	88	92
6	Waist flat (15 3/4" from HPS) (40cm)	1	2		36	40	44	48	52
7	Waist Circumference(" down side seam) (? Cm)	1	2		76	80	84	88	92
8	Hem	1	2		36	40	44	48	52
9	Side Seam	1	2		41	45	49	51	55
10	Sleeve slit	1	2		28	32	36	40	44
11	Sleeve length from armhole	1	2		56	60	64	68	71
12	sleeve sideseam	1	2		68	72	76	80	84
13	Total Sleeve length	1	2		83	87	91	95	99
14	Neck Circumference	1	2		33	37	41	45	49
15	Total length at Center Back	1	2		62	66	70	74	78



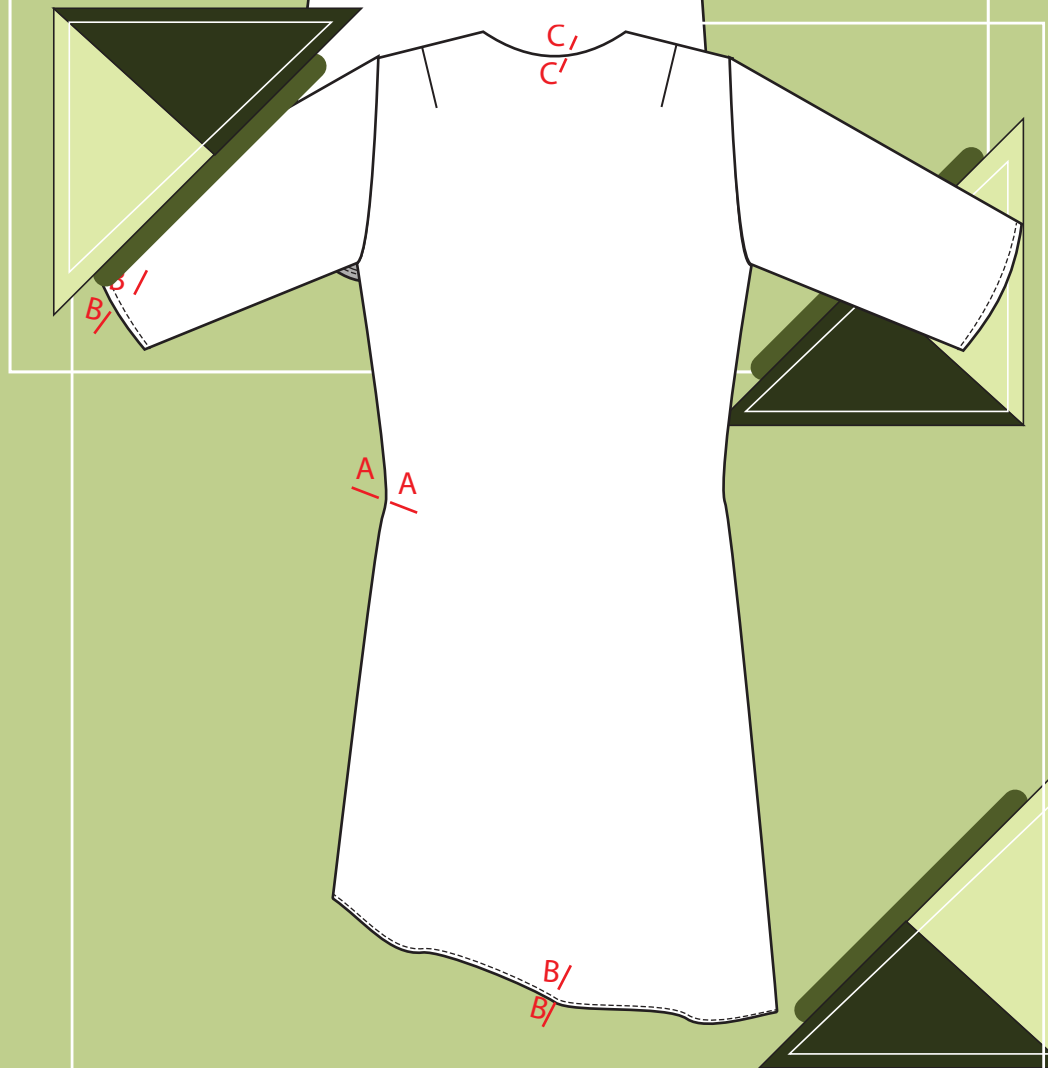
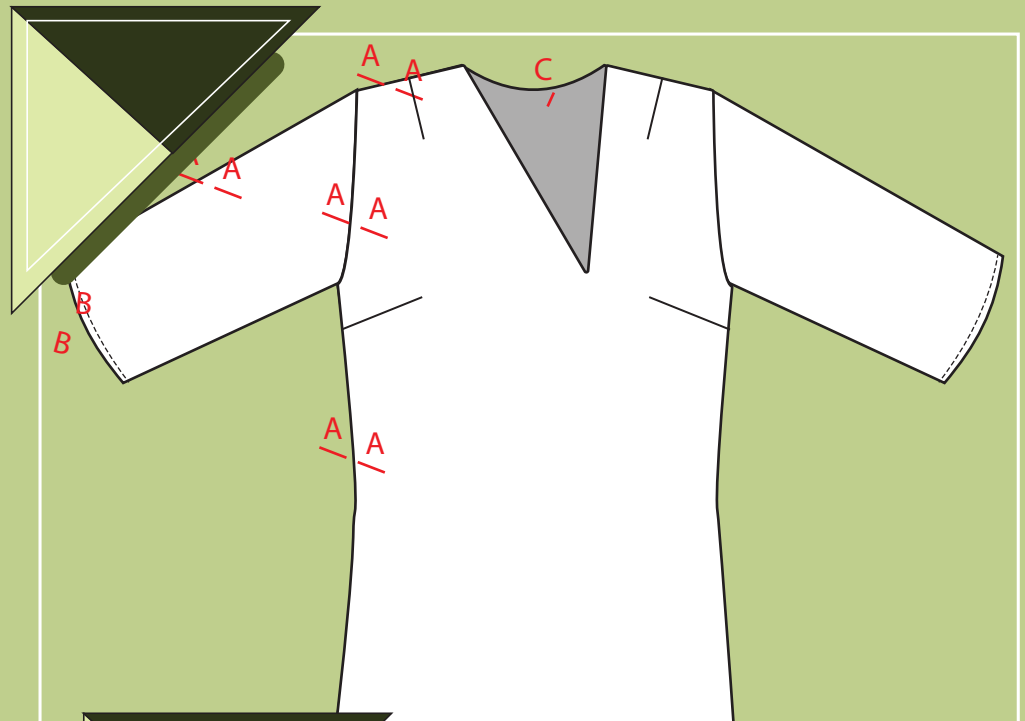
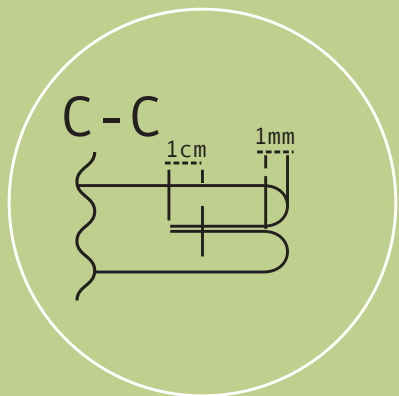
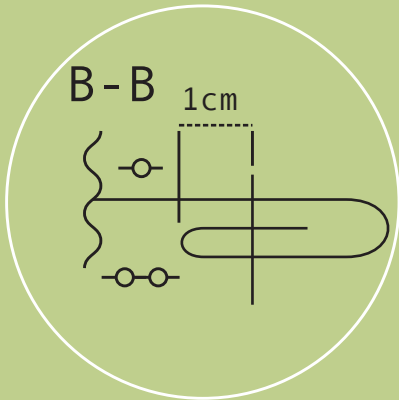
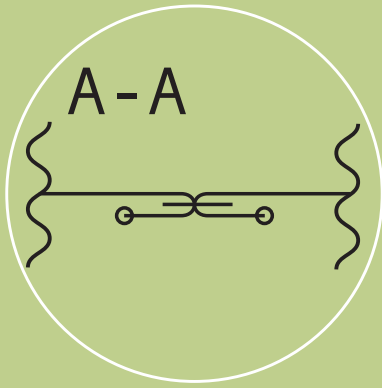


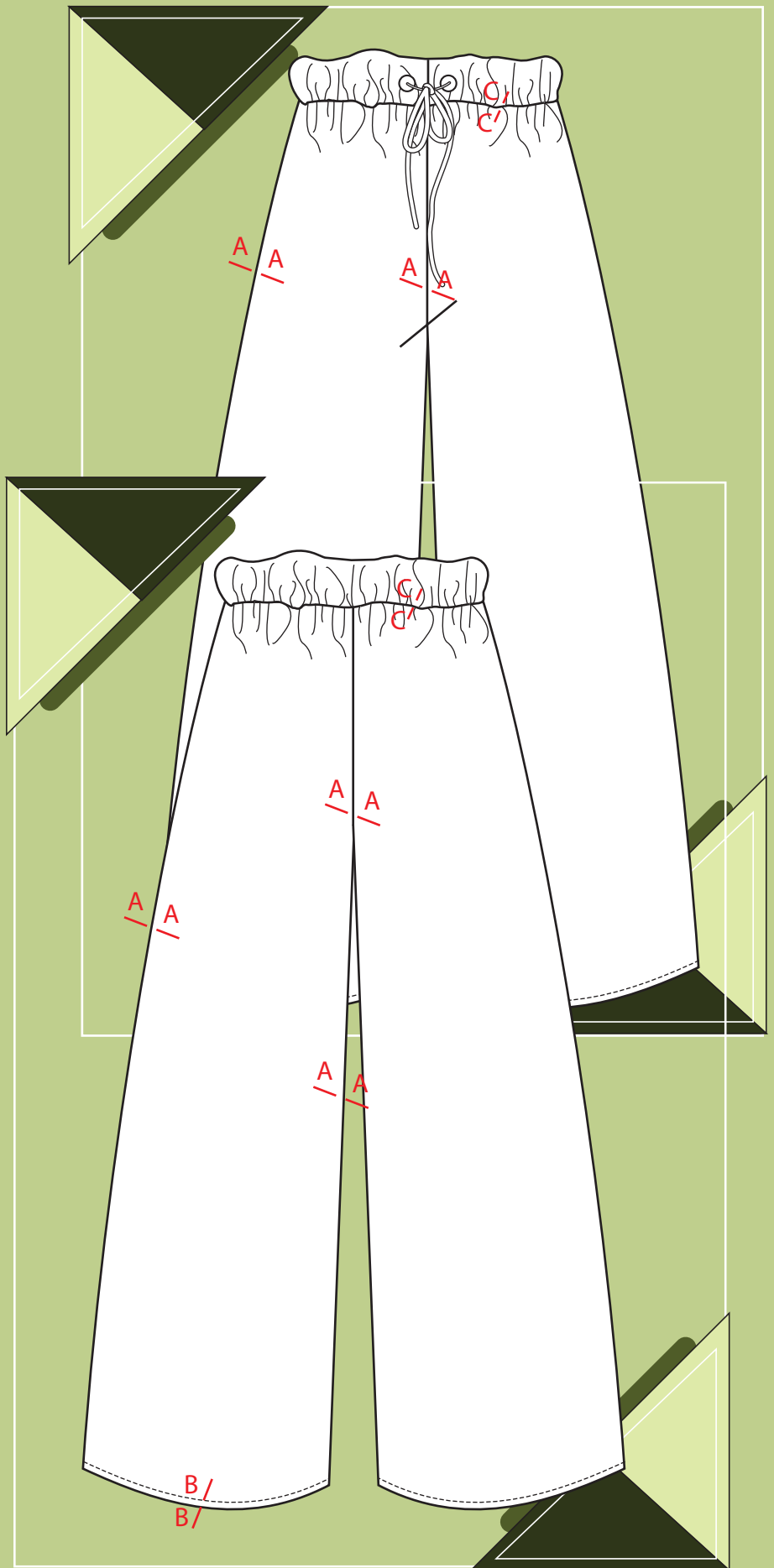
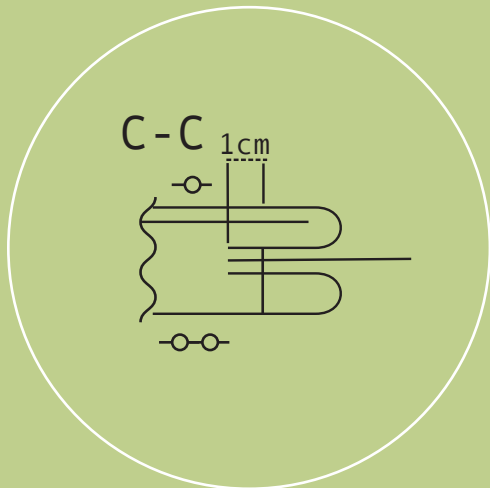
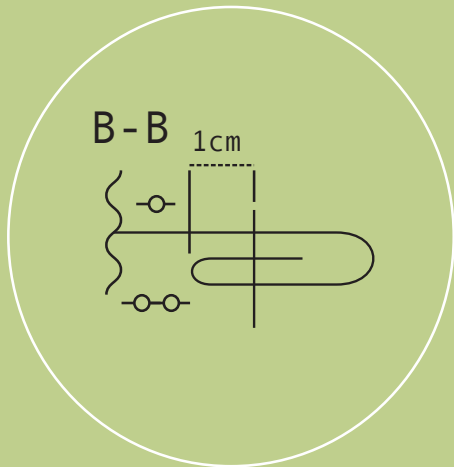
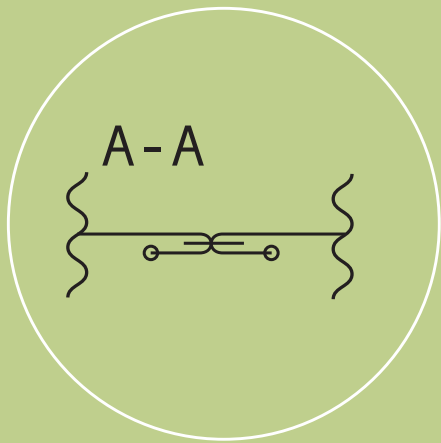
sizes	TOLERANCE		Comments	S	M	L	X	XL
	-	+						
# Points of Measure								
1 Waistband circumference	1	2		76	80	84	88	92
2 Drawstring and Elastic	1	2		65	69	73	77	81
3 Hip circumference	1	2		76	80	84	88	92
4 Total pants length	1	2		93	97	101	105	109
5 Center Front crotch	1	2		29.5	33.5	37 1/2	41.5	45.5
6 Center back crotch	1	2		41	45	49	51	55
7 Pant hem circumference	1	2		46	50	54	58	62
8 Pant leg length	1	2		91	95	99	103	107

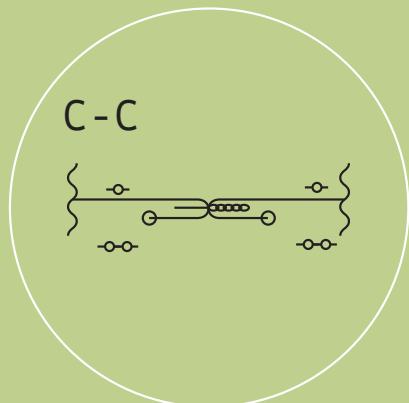
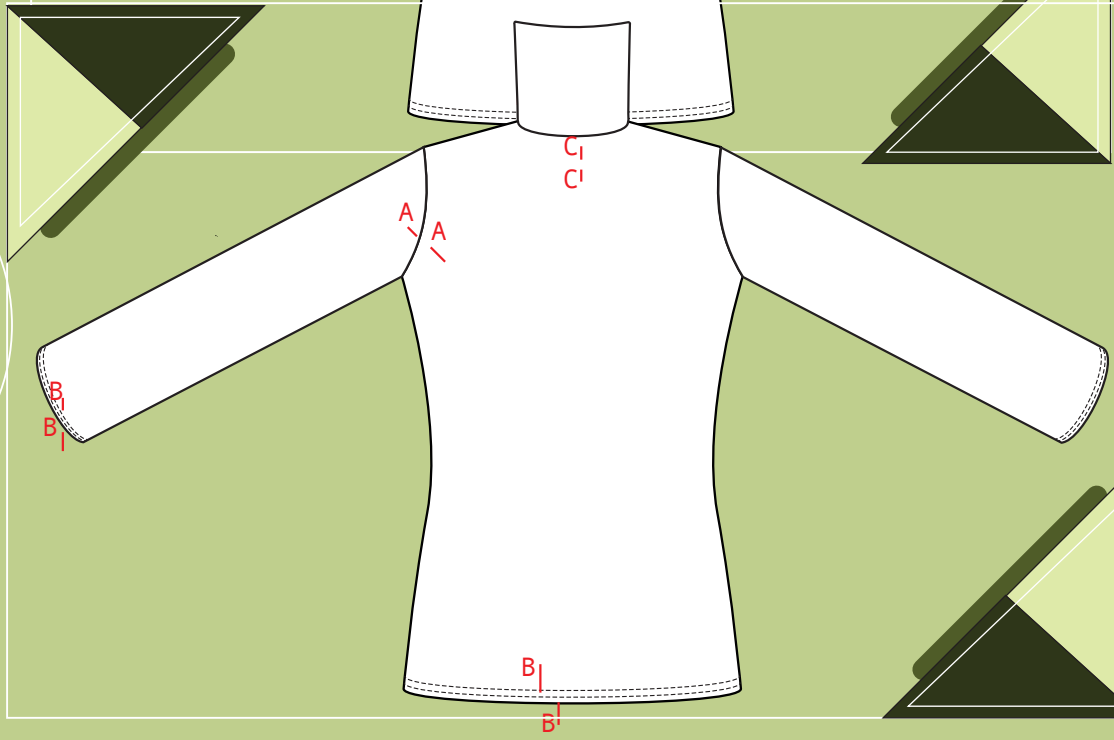
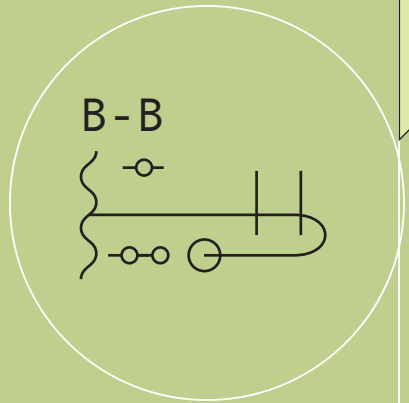
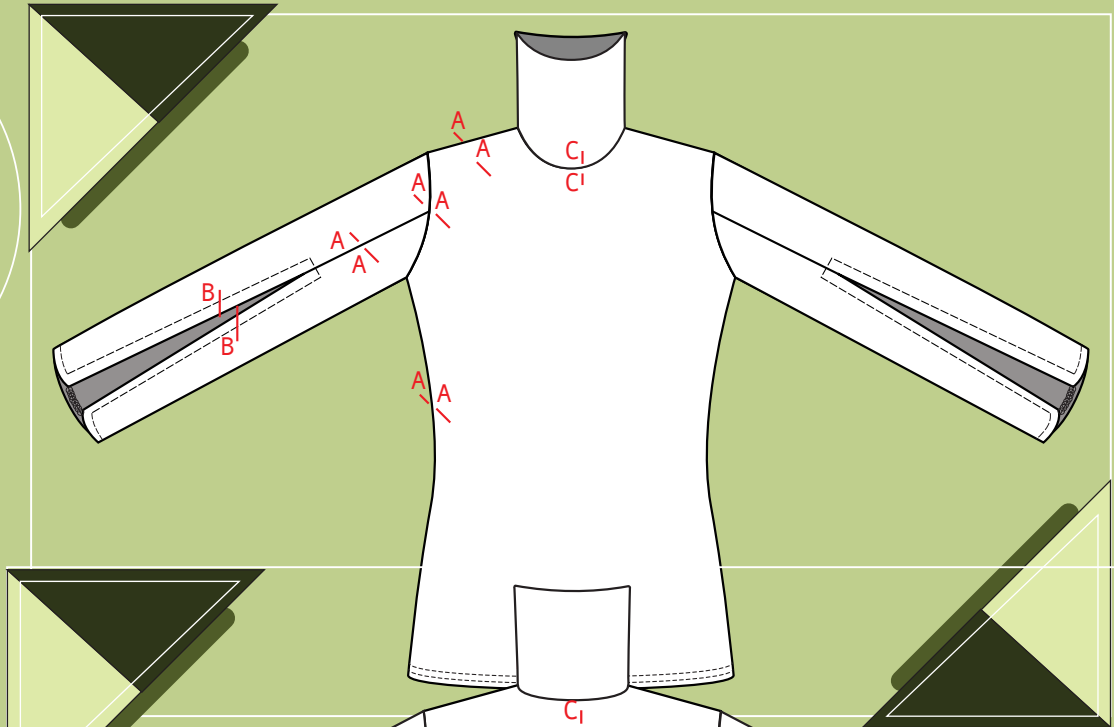
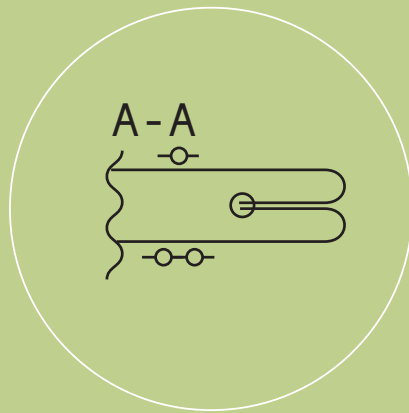


GARMENT CONSTRUCTION





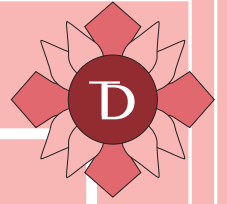




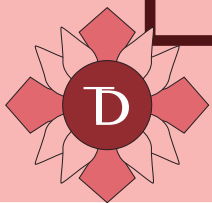


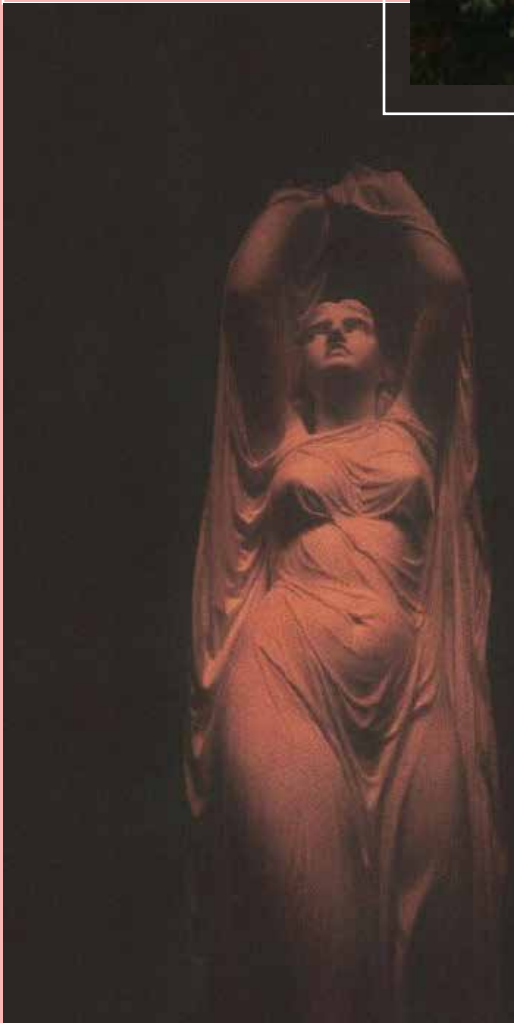
COLLECTION

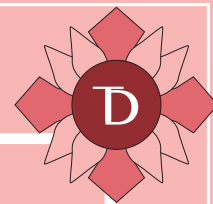
The Collection is a project where we learned to work in teams. We learned how to create a collection as one by combining our ideas and concept together and deciding what suits best for the theme of our collection. We created a collection that represented the contrast between light and dark, life and death. It is based on a greek goddess Persephone, who represent life on earth and life with Hades, which is death. We named our collection “ Chiaroscuro”, which signifies the constrast of light and dark.



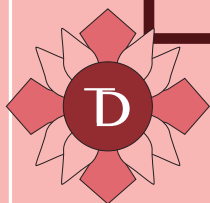
RESEARCH
DEVELOPMENT



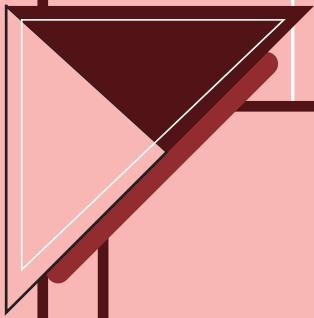
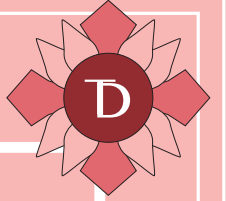




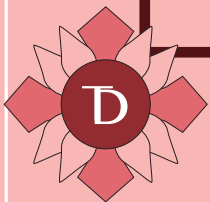
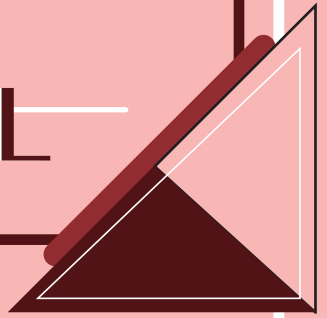
ILLUSTRATION

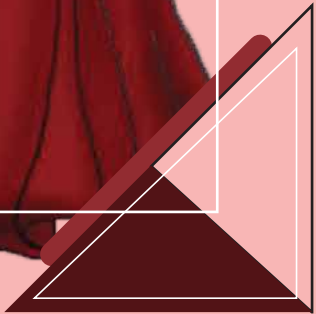
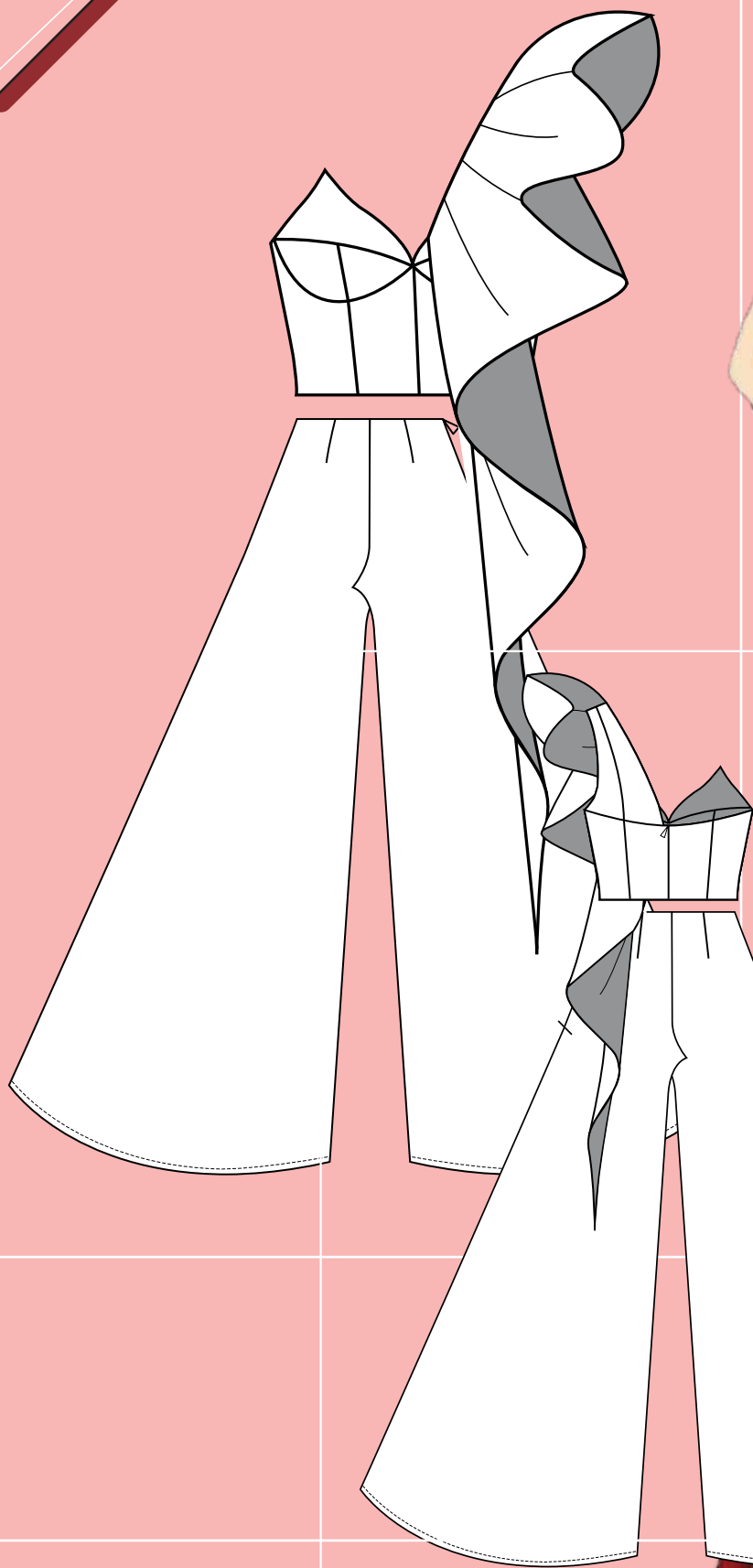
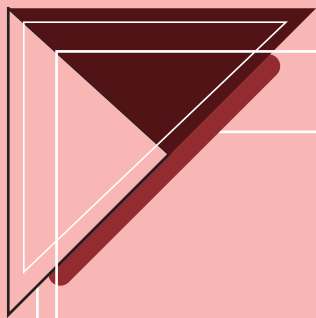


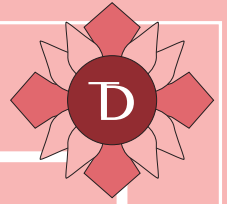




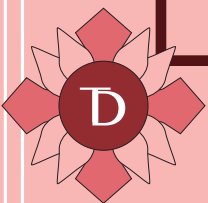
TECHNICAL







PHOTOSHOOT



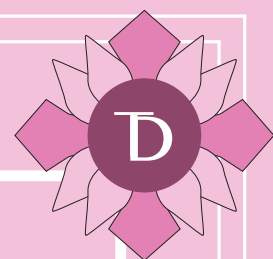




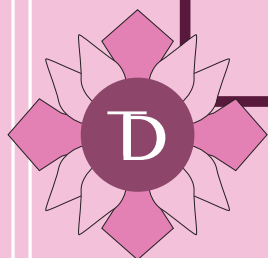


CREATIVITY

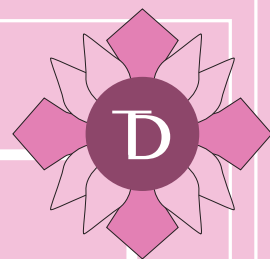
The creativity project is a project where we are able to express our creativity with no limits to what we wanted to make. We were given the word “Invisibility” and had to create a collection of 3 looks based on what persevered “invisibility” to be.



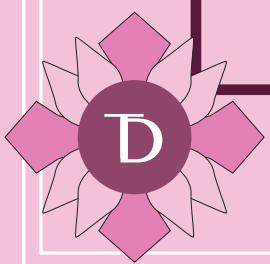
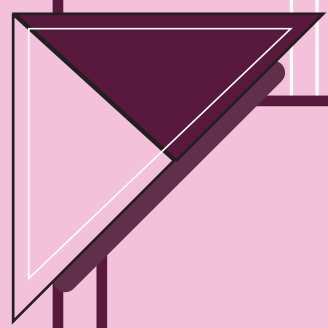
RESEARCH
DEVELOPMENT



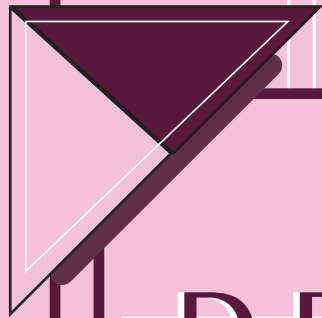
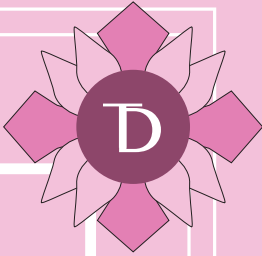




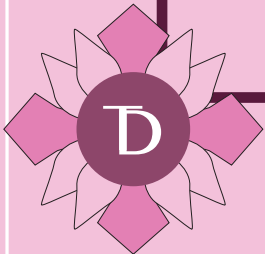
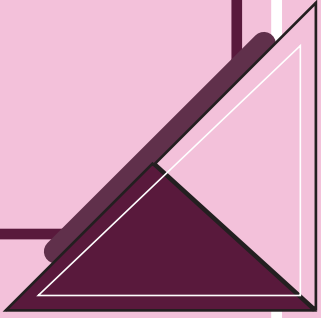
ILLUSTRATION

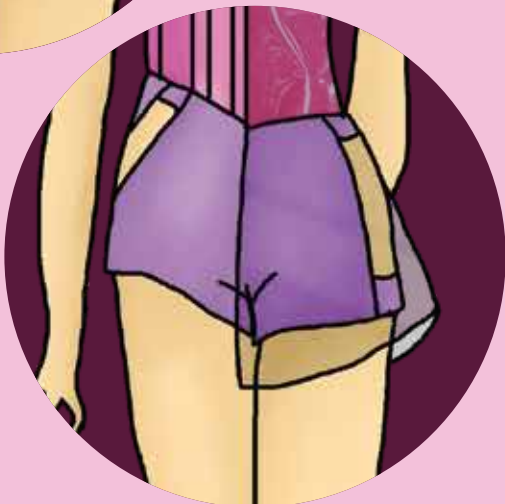
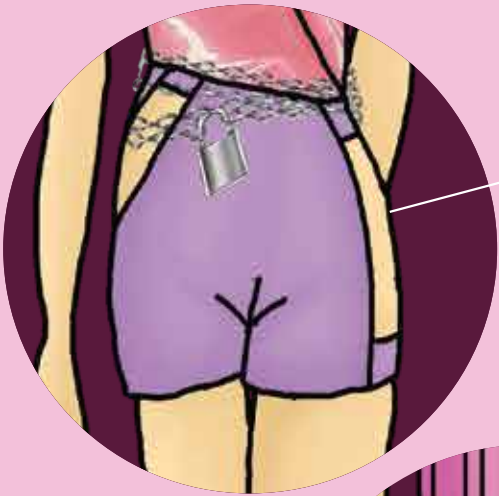
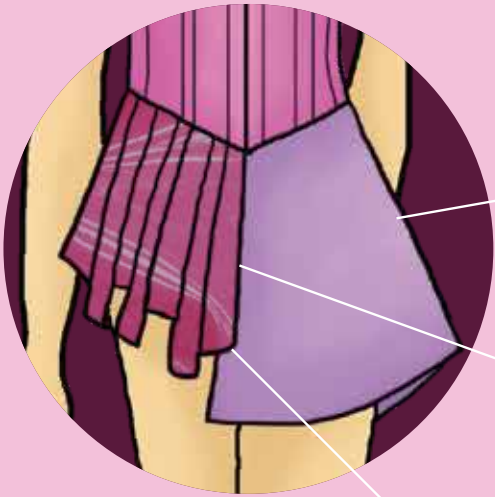


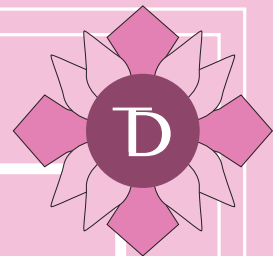




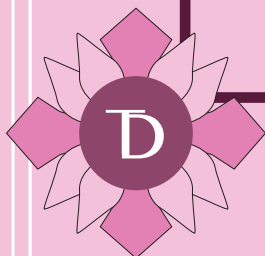
DETAILS
ON
GARMENT

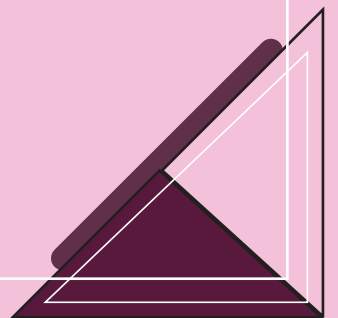
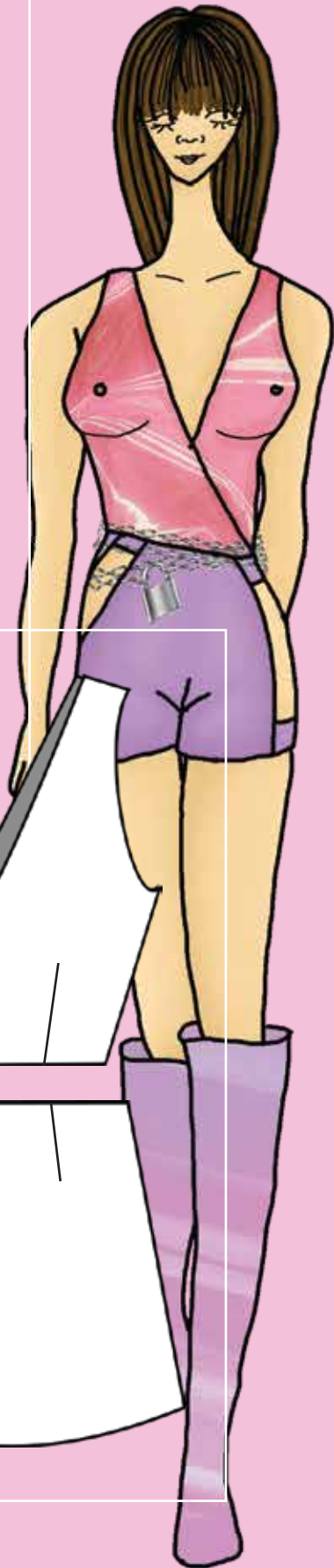
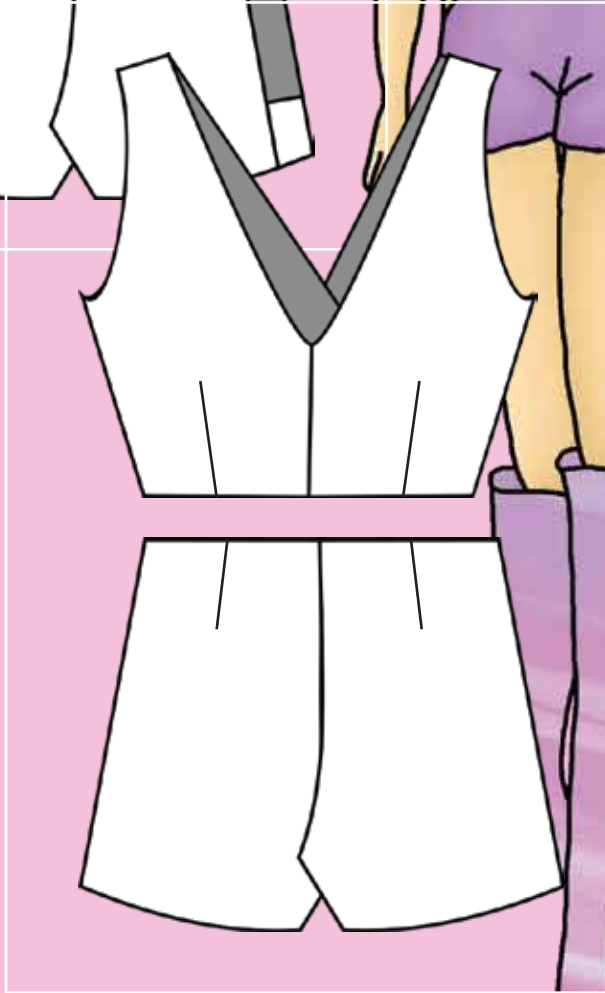
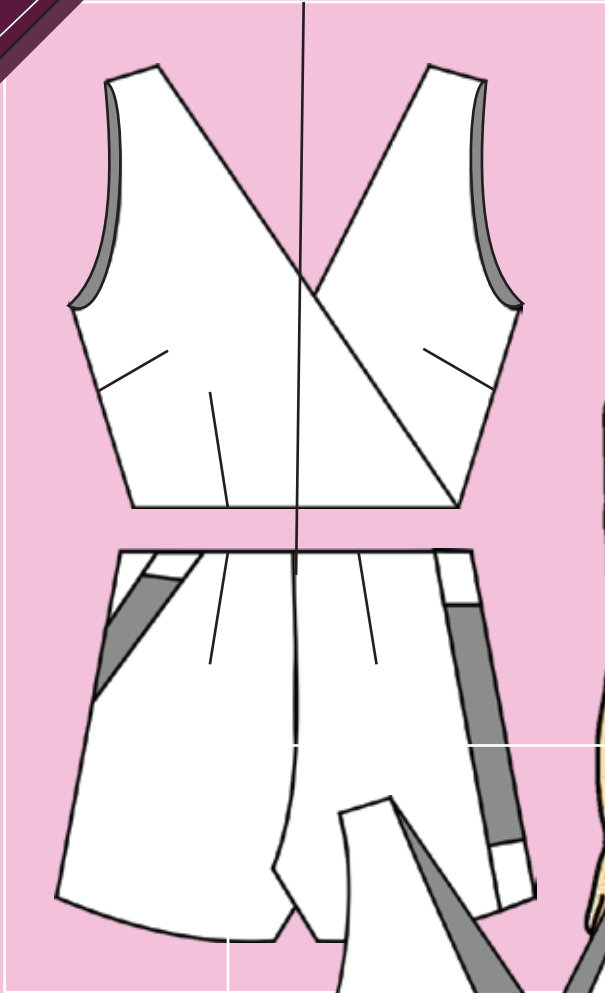
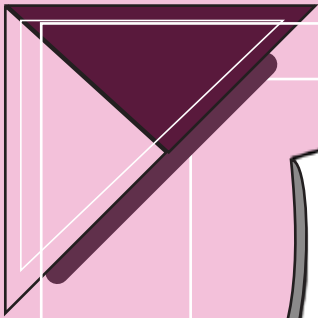


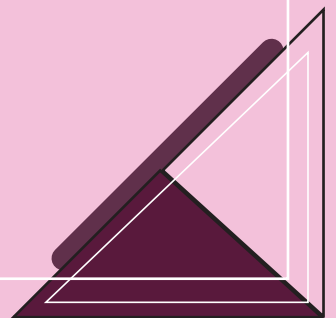
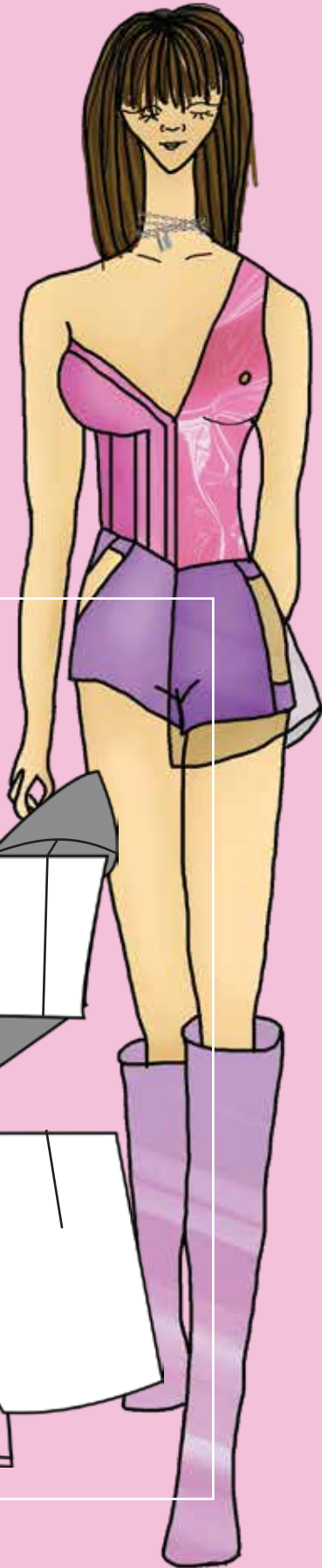
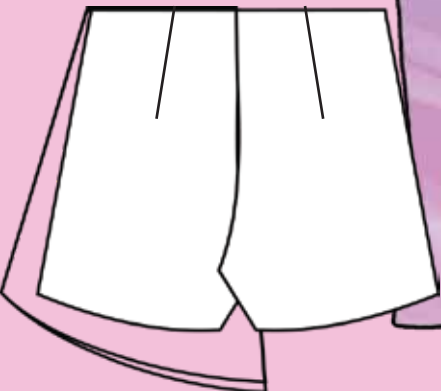
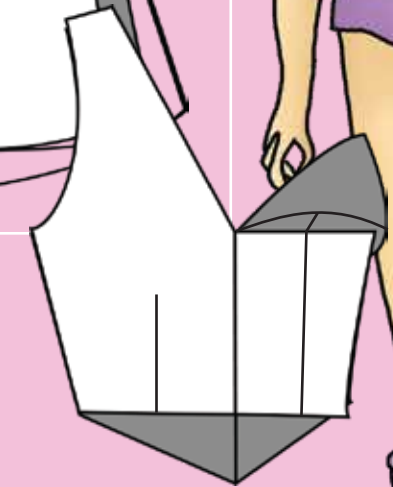
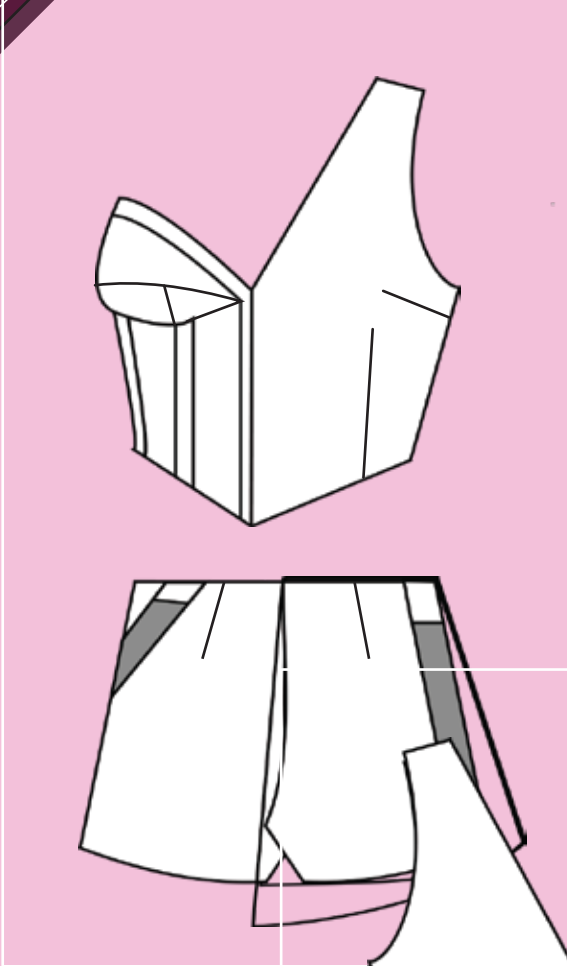
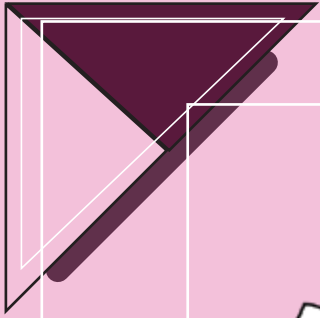


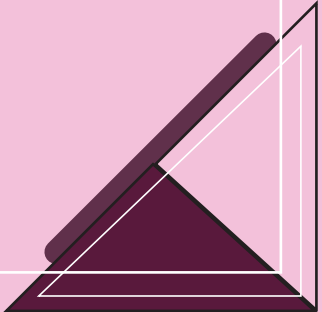
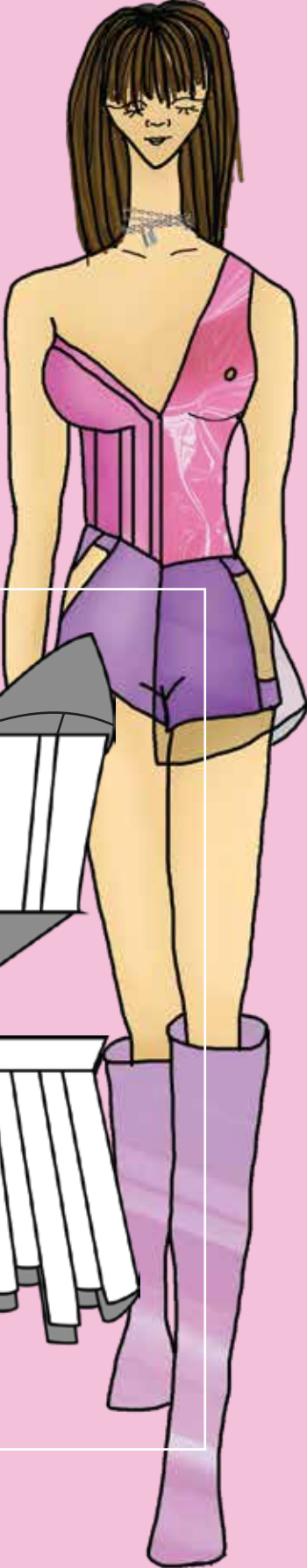
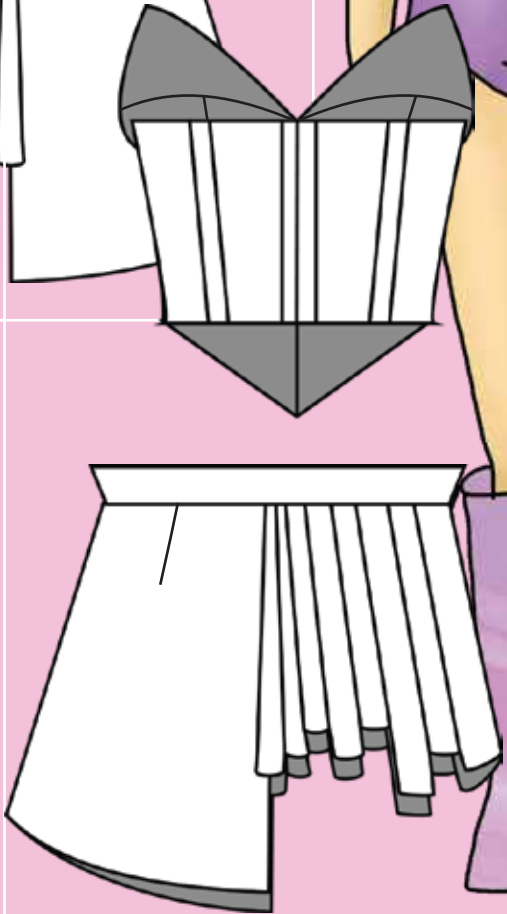
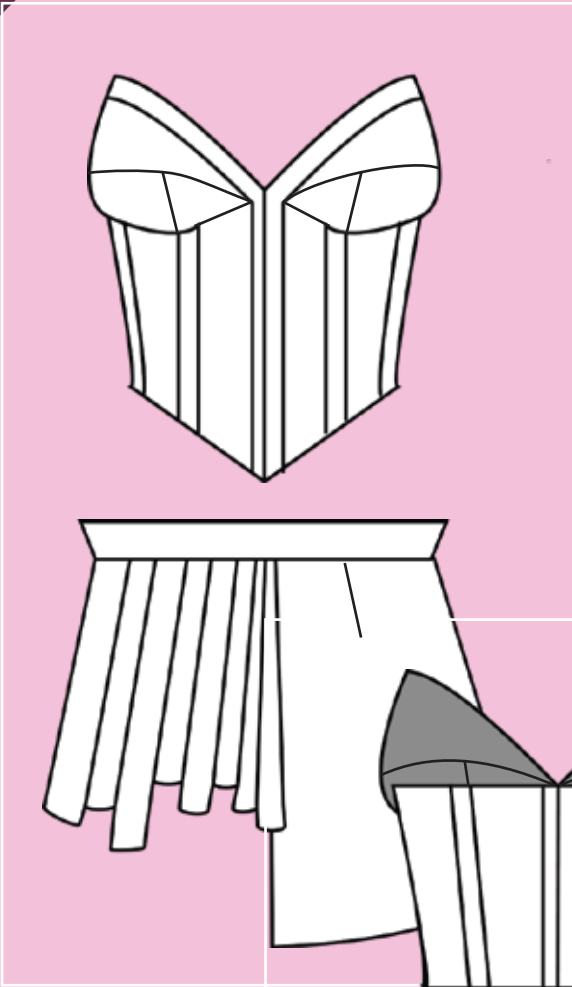
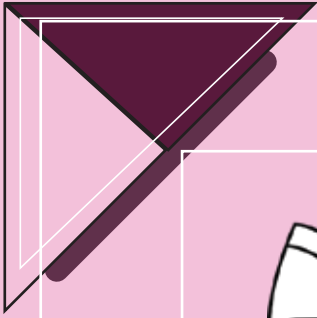


TECHNICAL









The background is a complex geometric composition. It features several large triangles and quadrilaterals. The top-left and bottom-right areas are filled with a series of concentric, slightly offset lines that create a sense of depth and movement. The top-right and bottom-left areas are solid dark purple. The center of the image is a lighter purple, where the word "END" is written in a bold, black, sans-serif font. The overall effect is a modern, abstract design with a strong sense of rhythm and balance.

END