

BACKGROUND

The City of Langley is a municipality in the Metro Vancouver Regional District. It lies directly east of the City of Surrey, adjacent to the Cloverdale area, and surrounded on the north, east and south by the Township of Langley.

LANDSCAPE DESIGN

Along with the physical benefits of time spent in nature, the restorative effects of nature support mental health and well-being. In this design, green spaces are melting into their daily life to improve better moods, decreased chance of depression, reduced stress levels and improved cognitive function.

ACCESSIBLE DESIGN

Safety is always the first priority. With accessible design compensates for deficiencies in everyday design via the reduction or elimination of barriers for seniors with limitations for specific abilities. Also, we applied universal design to make all seniors feel more easier more comfortable to use. Life should be restful and relaxed.

FLOOR PLAN & ROOF GARDEN DESIGN



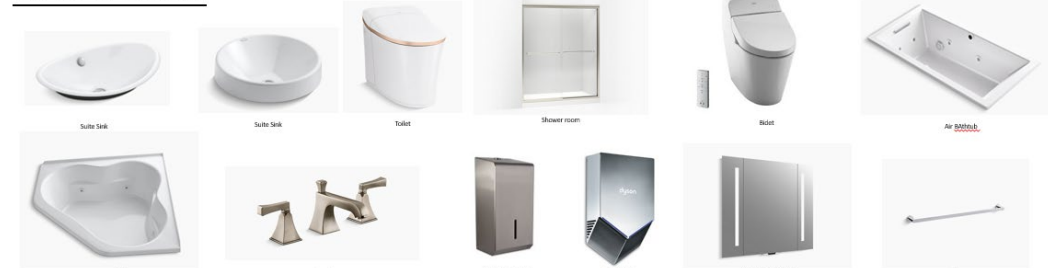
DESIGN CONCEPT

Green design helps to make connections between people and places, movement and urban form, and especially nature. Definition of organic in design is the interpretation of nature's principles manifested in buildings that were in harmony with the world around them. Organic concept often incorporates natural elements such as light, plants, and water into designs. "Organic design bringing the eco-friendly look, natural form into the design concept. the healthcare will use a semi-open design to establish strong connections to ensure efficiency and guaranteeing the privacy of residents. Furthermore, in the crisscross of light and shadow, people feel themselves wandering in the forest.

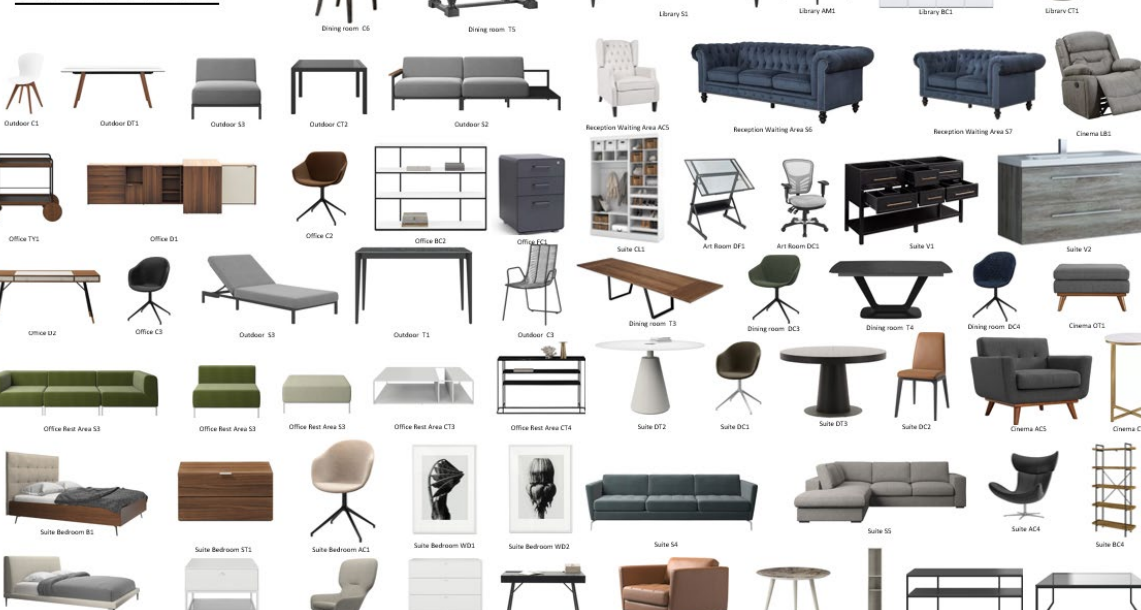
LIGHTING SELECTIONS



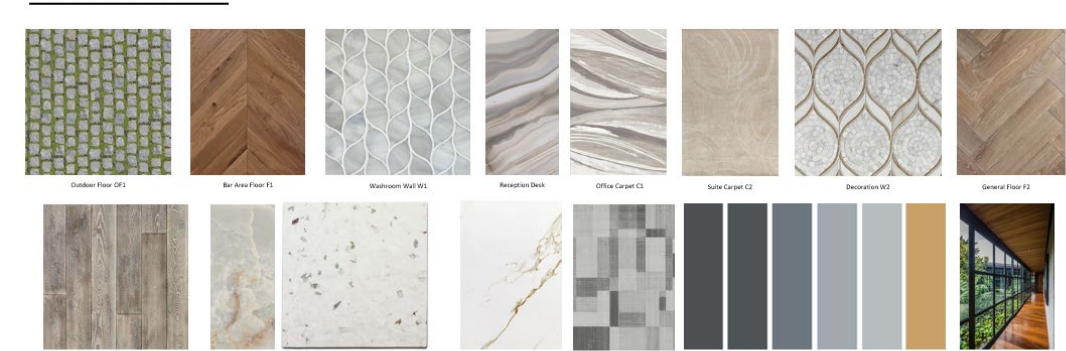
PLUMBING SELECTIONS



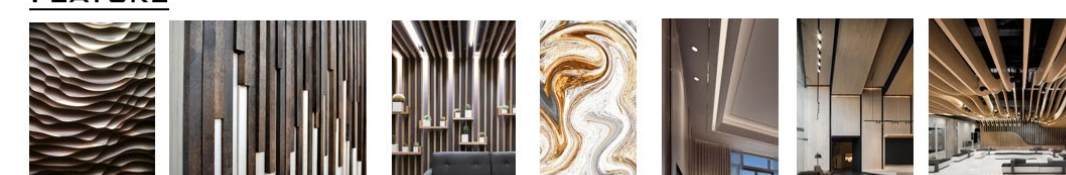
FURNITURE SELECTIONS



FINISHES SELECTIONS



CEILING & WALL FEATURE

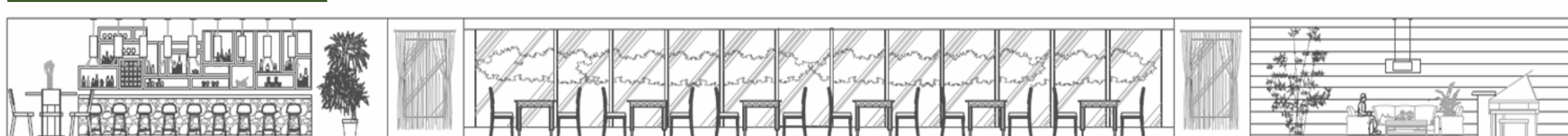


DESIGNED ELEVATIONS



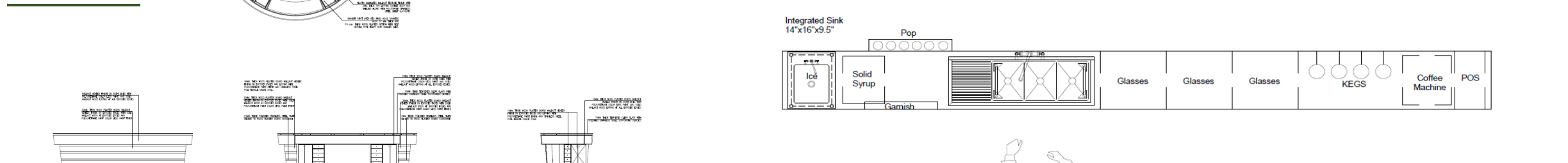
RECEPTION

DESIGNED SECTION

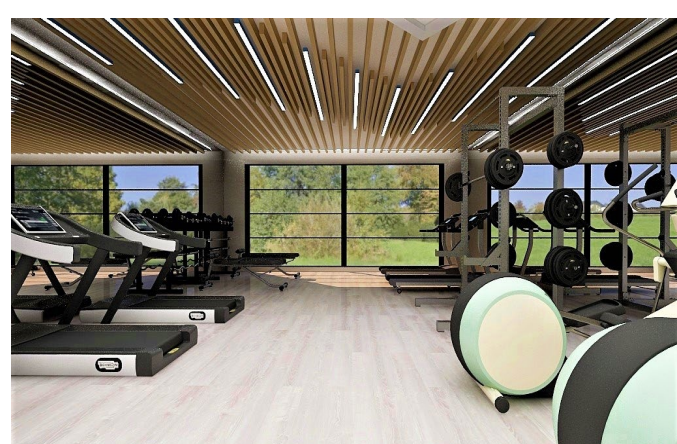


LIBRARY

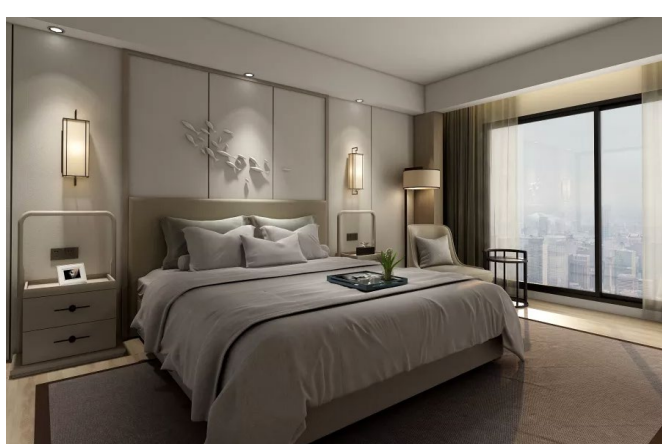
DETAILS



DESIGNED VIEWS



GYM



BEDROOM



WASHROOM



HEAD OFFICE



LIVINGROOM