

Computer Pattern Making

Final Project: Pattern Drafting

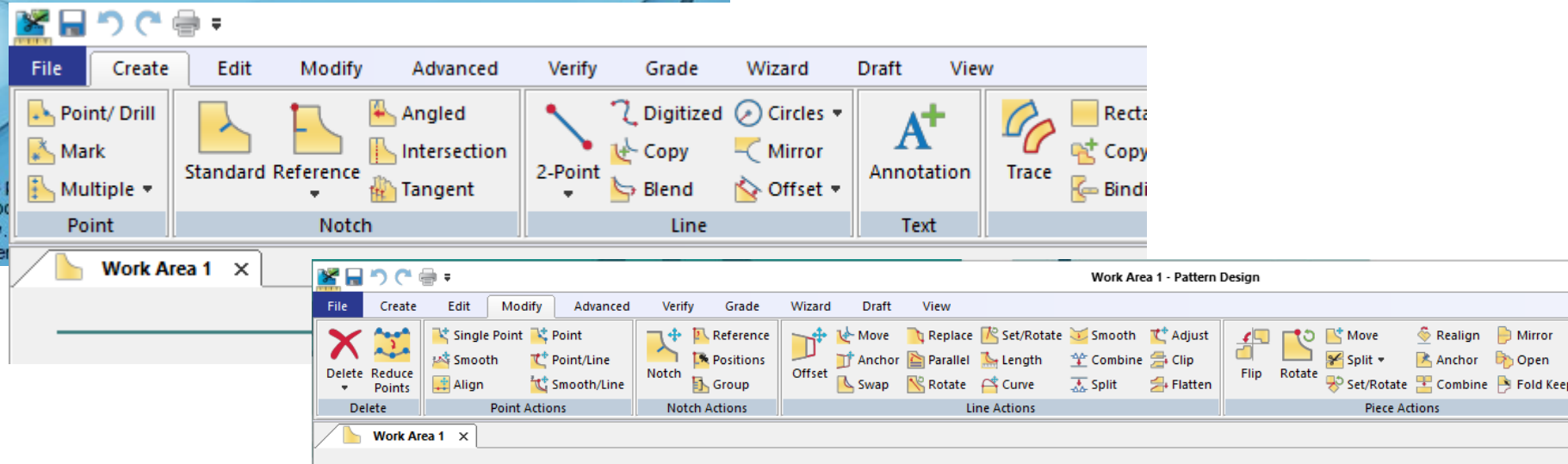
Women's Pant



PATTERN DESIGN

Version 12.0.0.298
© 1998-2019 Gerber Technology. All rights reserved. Gerber Technology, A Gerber Scientific Company

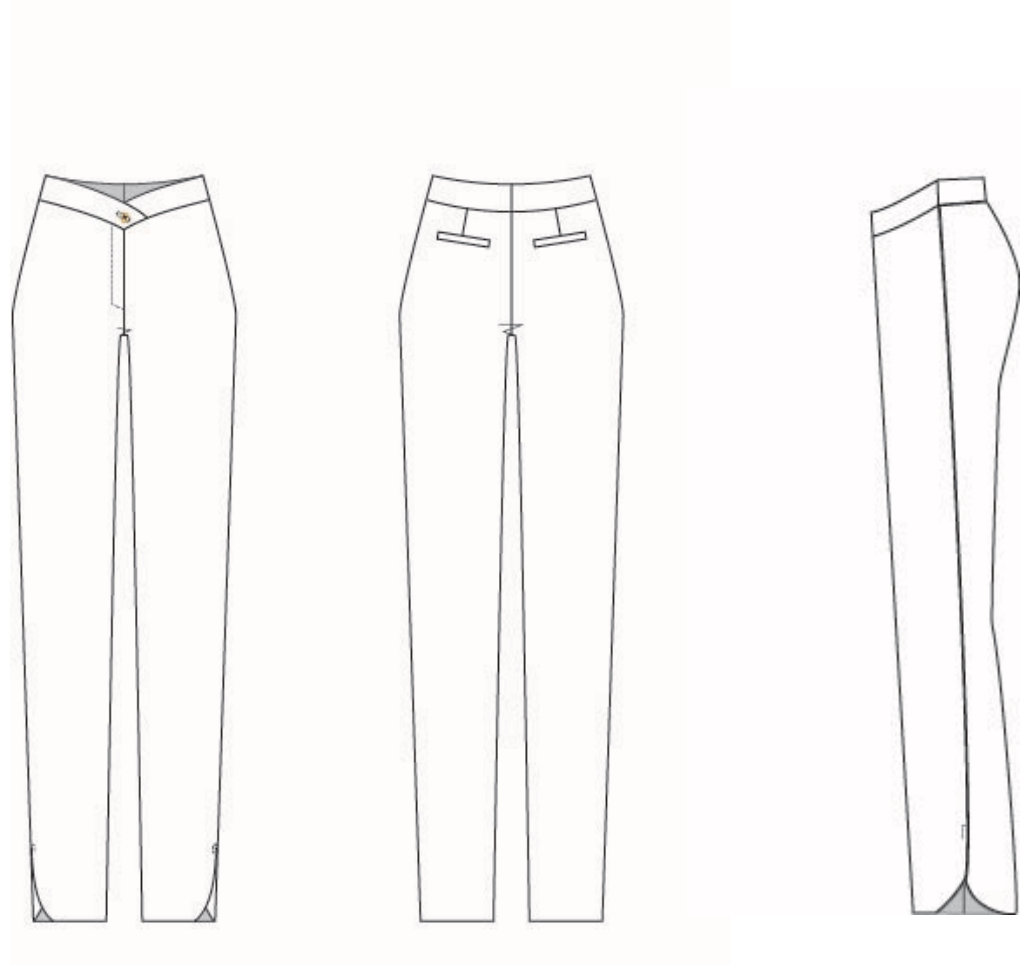
Warning: This computer program is provided for informational purposes only. No warranty is made for the distribution of this program, or any part thereof, or for the results obtained from its use. This product is covered by US patents.



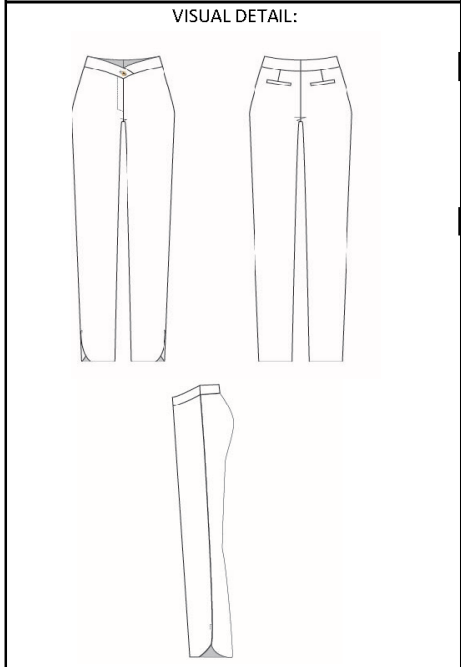


Sketch on left: inspiration from my Final Collection Concept

Technical Drawings below: the pant



DETAIL AND CONSTRUCTION SHEET	
Company Name: HRH by The Queen	Style #: 22AW300306G2BW2
Address:	Style Name: Duality
	Classification: Pant Season: AW2022
Phone:	Fabric Content: Body: 100% wool; lining: 100% rayon
Email: Christine@thequeenhrh.com	Colourway: Charcoal



WRITTEN DETAIL:

SEAM ALLOWANCES	PLACEMENT
3/8"	All seams, including hem facings but excluding jet pocket welt
1/4"	Jet pocket welt
OPERATION	COMMENTS
Front Waistband	2" lower than natural waist at centre front
	Right front waistband extends over center front by 2" h
	Left waistband non symmetric
	Left fly extends to right with buttonhole (men's style co
	Interior button on Right front waistband.
	Waistband facings cut of lining
Hems	Faced with lining; invisible stitch hem facing to pant leg
Outseam	Vent to 6" from hem as measured up from inseam
	Corners of outseam curved from vent downward:
	- toward front: 3"
	- toward back: 2"
Pocket placement	2" horizontally from centre back
	2" vertically from waistband
Seam finishing	Serge edge of exposed seam allowances.
Topstitching	For fly and tack at outseam vent only.
Buttonholes	1 on right waistband; 1 on left fly extension

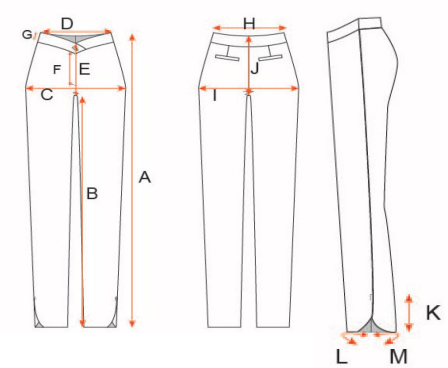
Date Created: May 2, 2021	Date Modified: June 1, 2021	Date Released:
---------------------------	-----------------------------	----------------

Tech Pack with construction comments and points of measurement

Specifications

SPECIFICATION SHEET		CODE	POINT OF MEASURE	TOL +/-	4	6/S	8	10/M	12	14/L
COMPANY	HRH by The Queen	A	Outseam - to hem	1/8 "			39.851 "			
ADDRESS		B	Inseam	1/8 "			29.247 "			
PHONE		C	Front High Hip point to point	1/8 "			18.192 "			
GARMENT INFORMATION		D	Front Contour Waist point to point	1/8 "			13.89 "			
GARMENT NAME	Duality	E	Front Rise to top of waistband	1/16 "			9.397 "			
GROUP NAME	Emergence	F	Fly length	1/8 "			7 "			
CLASSIFICATION	Pant	G	Waistband width	1/8 "			2 "			
SEASON	AW 2022	H	Back Contour Waist point to point	1/8 "			13.5 "			
GARMENT LABEL	HRH by The Queen	I	Back High Hip point to point	1/8 "			19.636 "			
FABRIC CONTENT	100% Wool	J	Back Rise to top of waistband	1/16 "			13.043 "			
COLOURWAY	Charcoal	K	Leg opening vent height from hem	1/8 "			6 "			
		L	Front leg opening sweep	1/8 "			7.2 "			
DESCRIPTION	Contour assymmetric waistband pant, jet pockets at back and tapered curved side vents at hem.	M	Back leg opening sweep	1/8 "			8.162 "			
STYLE NUMBER	22AW300306G2BW2									

SKETCH



SWATCH

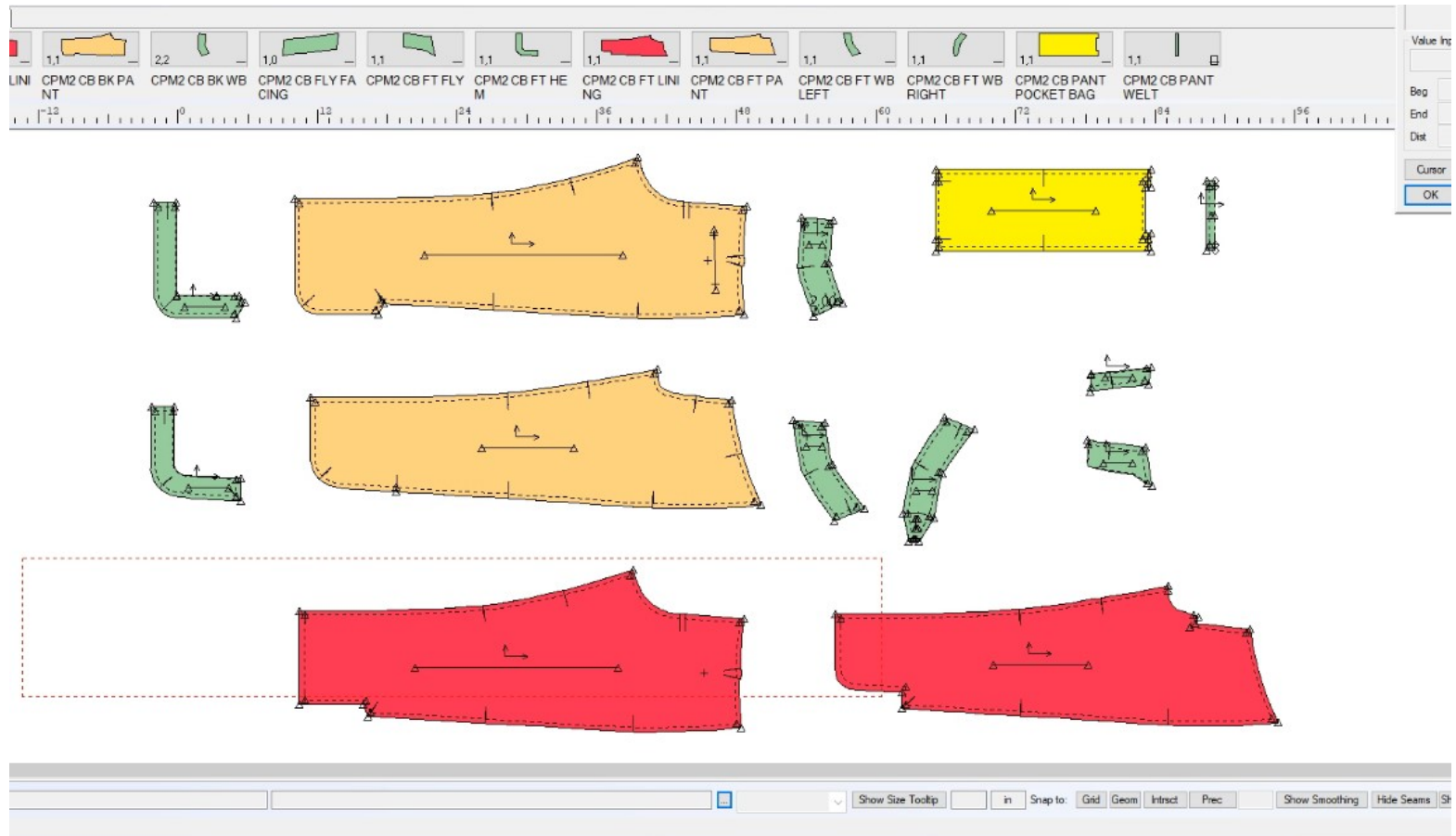
Body:



Lining:



DATE CREATED	2021-05-02	DATE APPROVED & RELEASED:
DATE MODIFIED	June 1 2021	



Above: the pattern, in Gerber
 Right: finished pant, made for the Final Collection

