

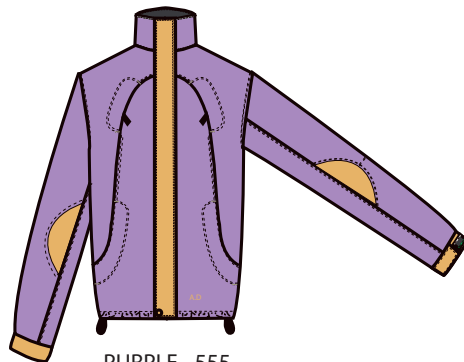
	SEASON: Fall/Winter
SUPPLIER: Decathlon	LINE: Unisex
DESIGNER: Dennise Chano	GARMENT: Contrast Color Jacket
DATE: 20-3-20	REFERENCE: JK1000



VIOLET - 454



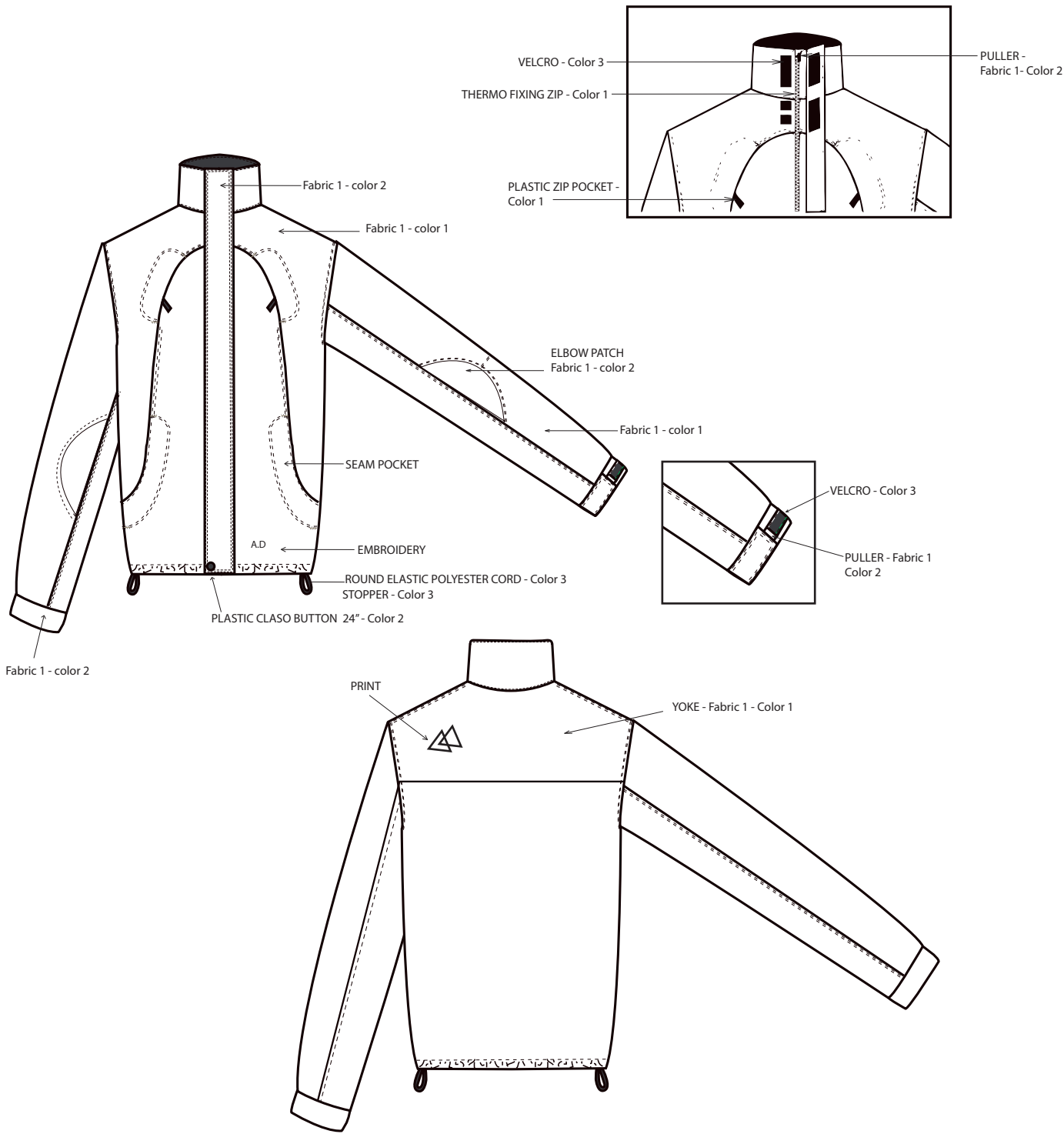
MAROON - 777



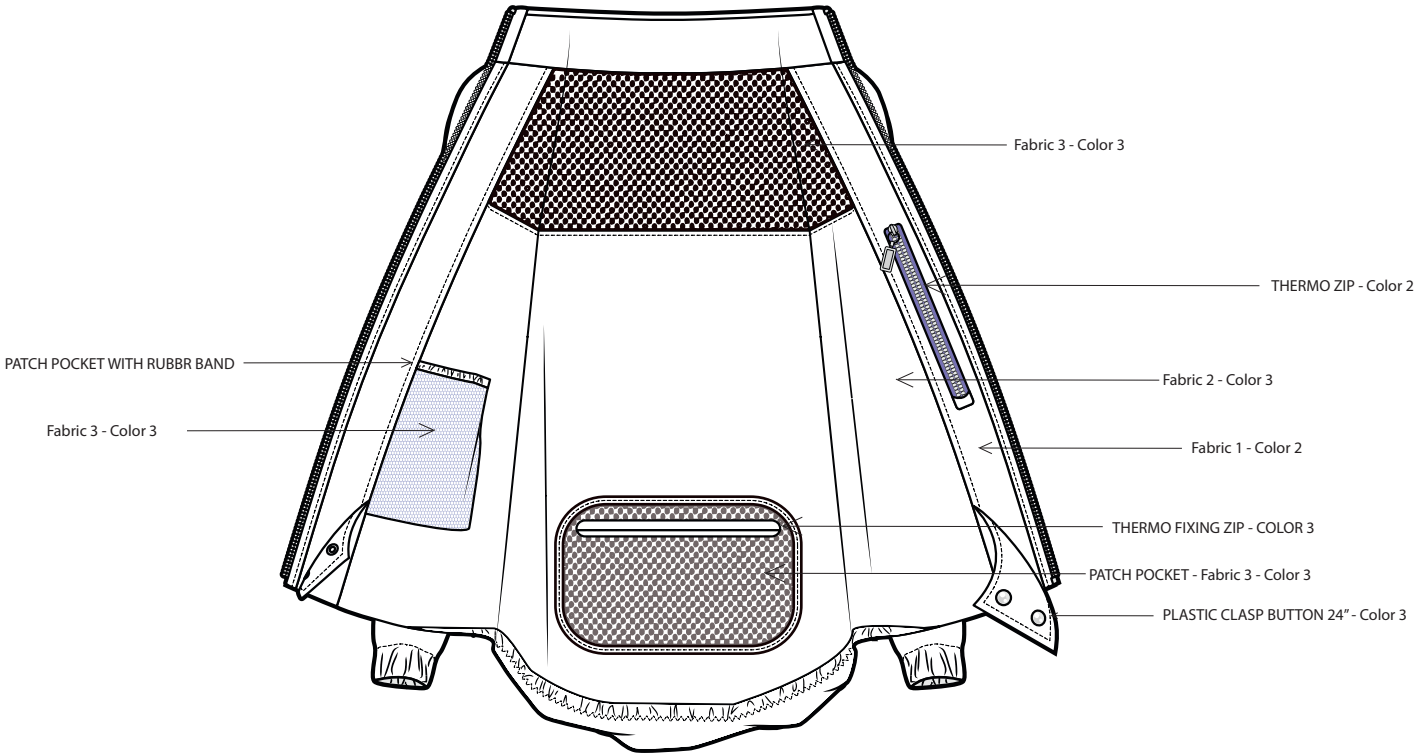
PURPLE - 555



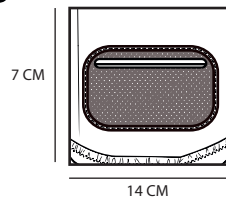
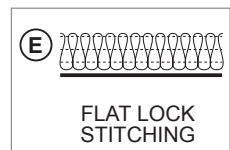
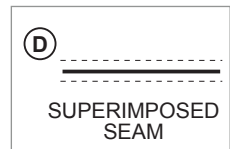
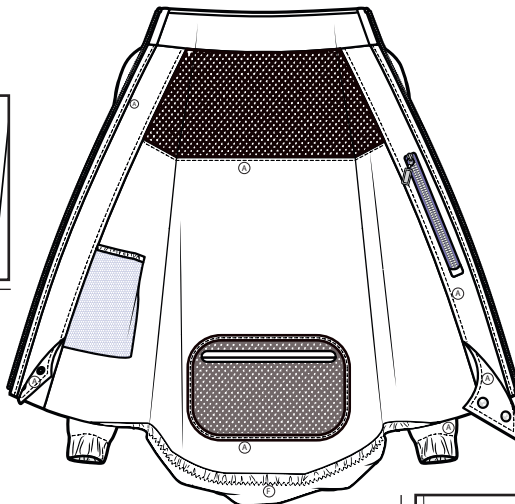
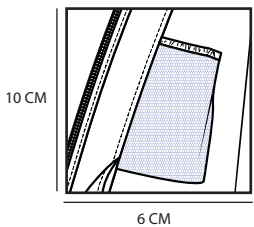
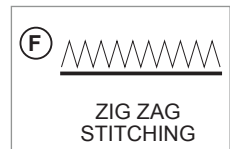
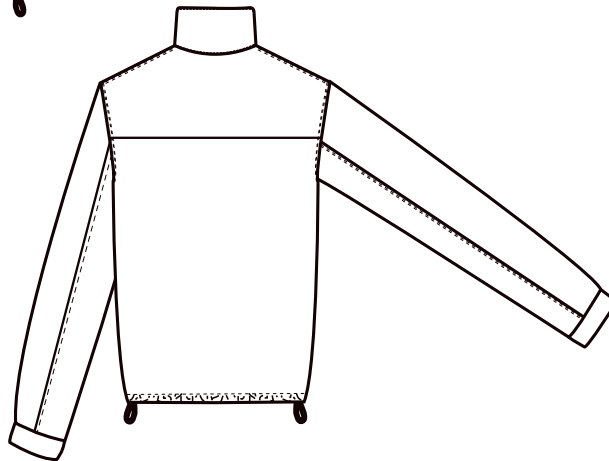
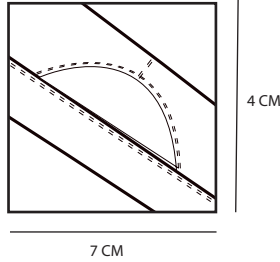
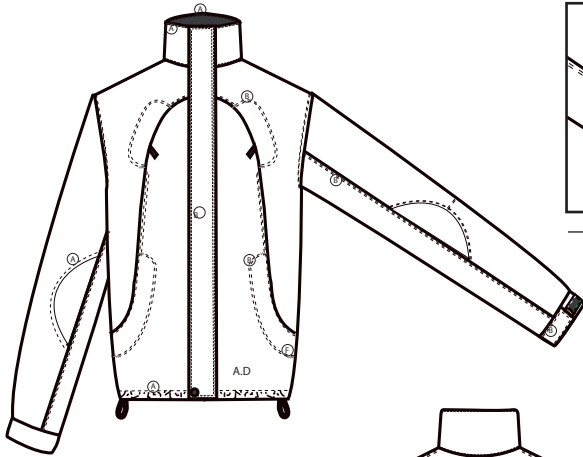
	SEASON: Fall/Winter
SUPPLIER: Decathlon	LINE: Unisex
DESIGNER: Dennise Chano	GARMENT: Contrast Color Jacket
DATE: 20-3-20	REFERENCE: JK1000



	SEASON: Fall/Winter
SUPPLIER: Decathlon	LINE: Unisex
DESIGNER: Dennise Chano	GARMENT: Contrast Color Jacket
DATE: 20-3-20	REFERENCE: JK1000



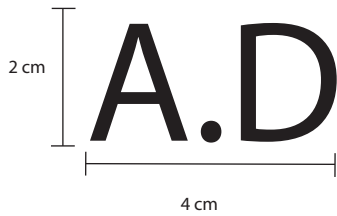
	SEASON: Fall/Winter
SUPPLIER: Decathlon	LINE: Unisex
DESIGNER: Dennise Chano	GARMENT: Contrast Color Jacket
DATE: 20-3-20	REFERENCE: JK1000



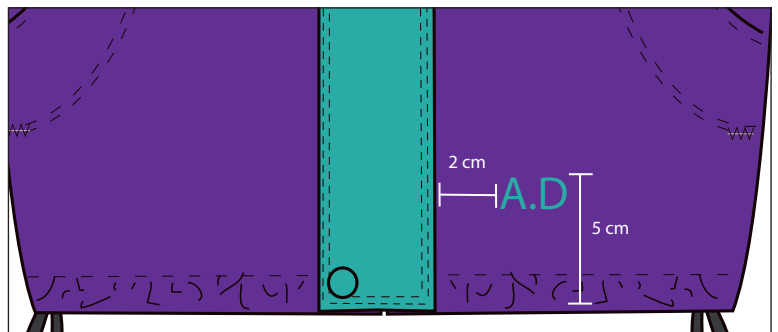
SEASON: Fall/Winter	
SUPPLIER: Decathlon	LINE: Unisex
DESIGNER: Dennise Chano	GARMENT: Contrast Color Jacket
DATE: 20-3-20	REFERENCE: JK1000

ARTWORK: EMBROIDERY

SIZE: Isn't real size. You must follow measures 2cm x 9cm



CODE:	454	555	777
BACKGROUND COLOR:	VIOLET #560c70	PURPLE #bf93cc	MAROON #ad005b
COLOR 1:	PMS 326 #00b2aa	PMS 714 #f9ba82	PMS 630 #8cccd3
COLOR2:			
COLOR3:			
COLOR 4:			



PLACEMENT: Left button, 2 cm from front of the jacket and 5 cm.

	SEASON: Fall/Winter
SUPPLIER: Decathlon	LINE: Unisex
DESIGNER: Dennise Chano	GARMENT: Contrast Color Jacket
DATE: 20-3-20	REFERENCE: JK1000

PROTO SAMPLE COLOR: 454 - VIOLET
SALES SAMPLE COLOR: 454 - VIOLET
SAMPLE SIZE: S
SIZES: S-XXL

<b>FABRIC</b>
FABRIC 1: Nylon 120 gr/m2 FABRIC 2: Polar fleece 90 gr/m2 FABRIC 3: Mesh 90 gr/m2

<b>COMPOSITION</b>
FABRIC 1: 100% PA FABRIC 2: 100% PES FABRIC 3: 100% PES

<b>FINISHES:</b> Cire finished
--------------------------------

<b>COLOR WAYS CODE:</b> Violet 454, Purple 555, Maroon 777
--

CODE:	COLOR 1:	COLOR 2:	COLOR 3:
454 VIOLET	VIOLET #560c70	PMS 326 #00b2aa	
555 PURPLE	PURPLE #bf93cc	PMS 714 #f9ba82	
777 MAROON	MAROON #ad005b	PMS 630 #8cccd3	