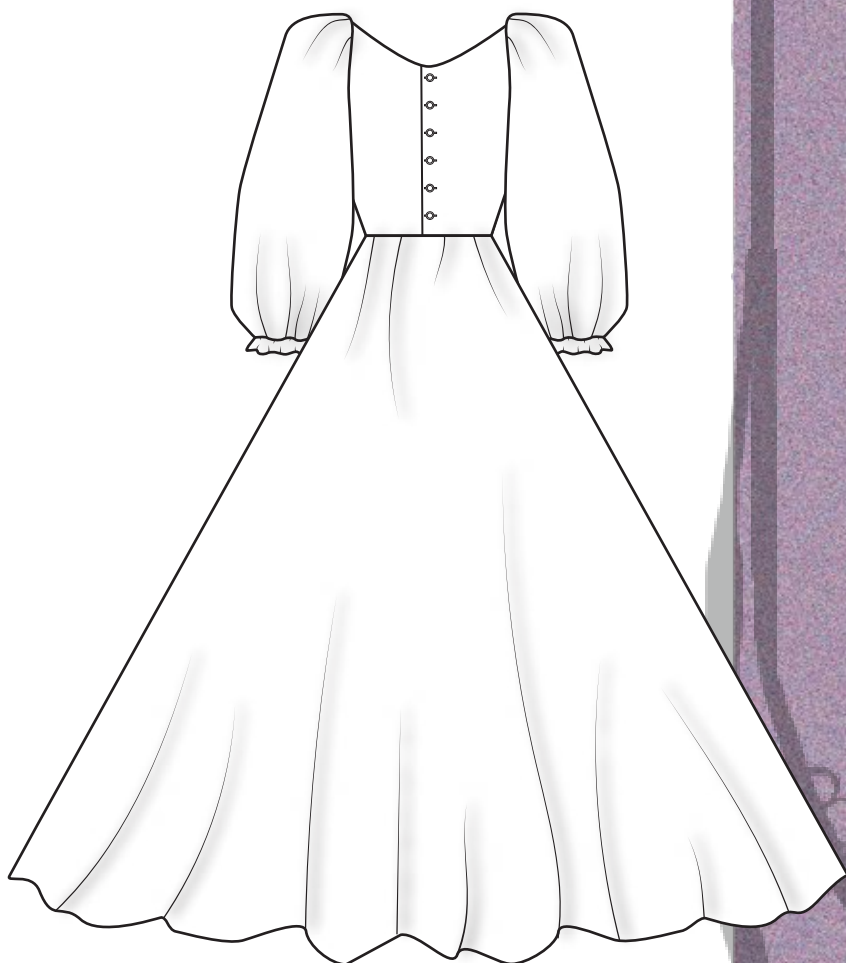
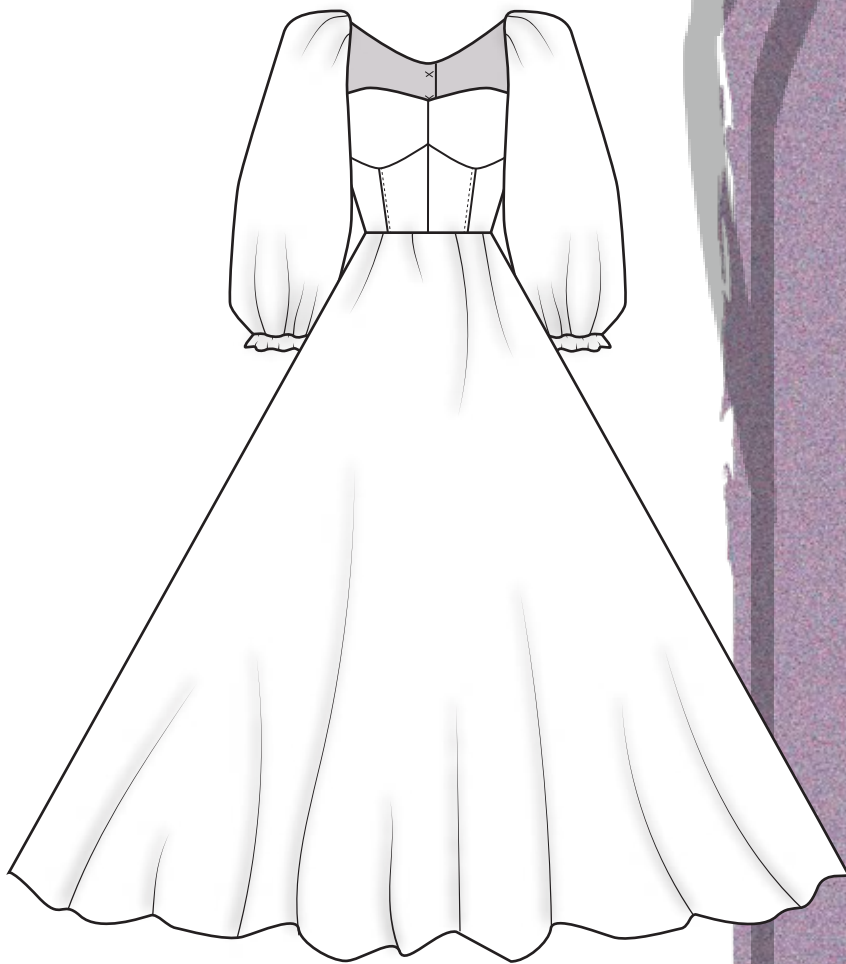


Party Time

Eulàlia Bonavia Brillas



Dress

Description

Dress long till ankles. Heartshape neck-line on front and low neckline on the back. Closed with 6 buttons on the back. Ballon shape long sleeves with a little ruffle cuff. Long gown skirt with a lateral seam.

Backstitch on bustier, fancy flap, and sleeve hem. All sewn with plain seam.

Trimmings

Buttons

Supplier

Eulàlia B

M / F

Season

Summer

Garment

Dress

Ref.

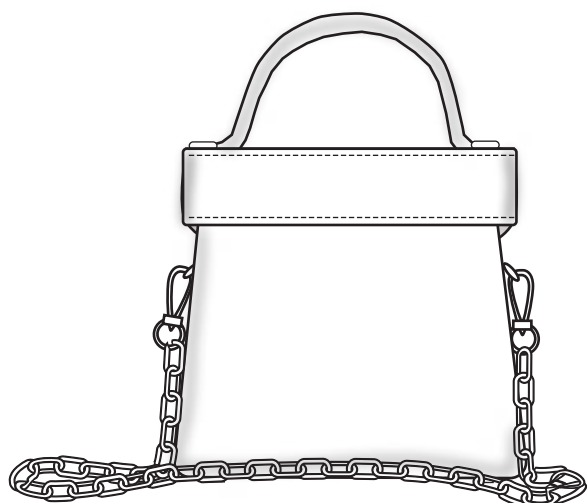
Audrey

Sizes

XS to XL

Collection

Party Time



Bag

Description

Little square bag with a strip on the top and a chain on the sides. Aperture on the center front with a round shape.

Backstitch on aperture and strip. All sewn with plain seam.

Trimmings

Bottom pieces, chain

Supplier

Eulàlia B

M / F

Season

Summer

Garment

Dress

Ref.

Mary

Sizes

XS to XL

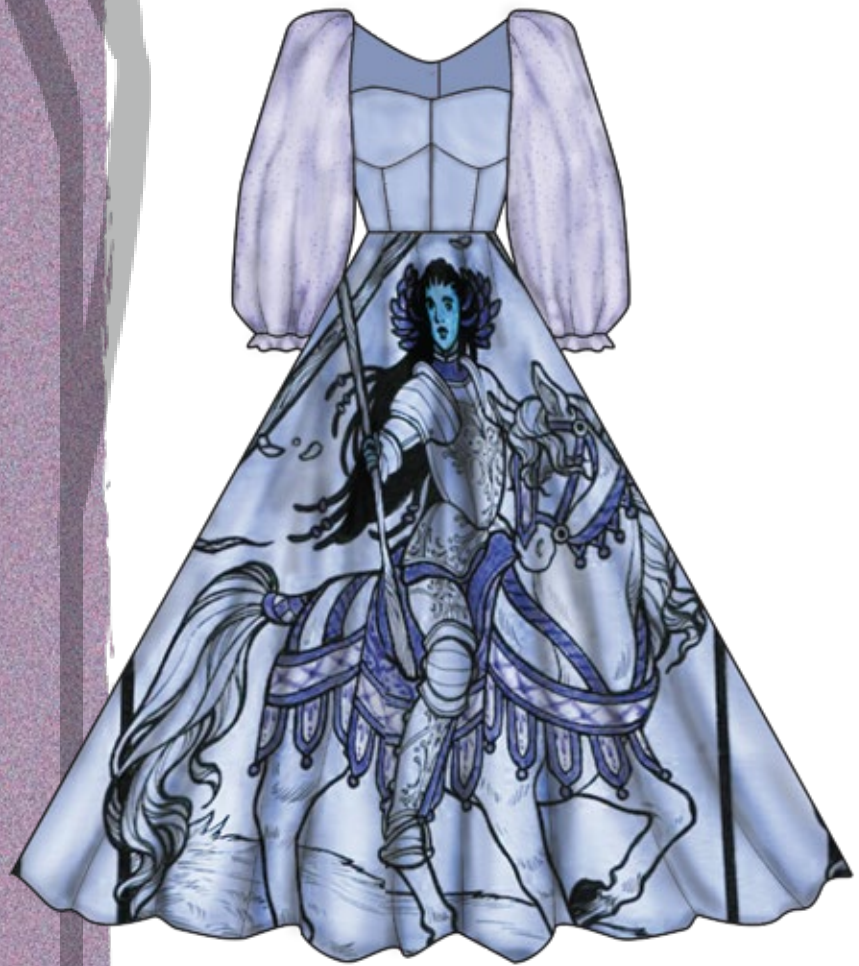
Collection

Party Time

Dress

Supplier
Eulàlia B

Fabric supplier
Sauleda



Ref. F1

Fabric
Print



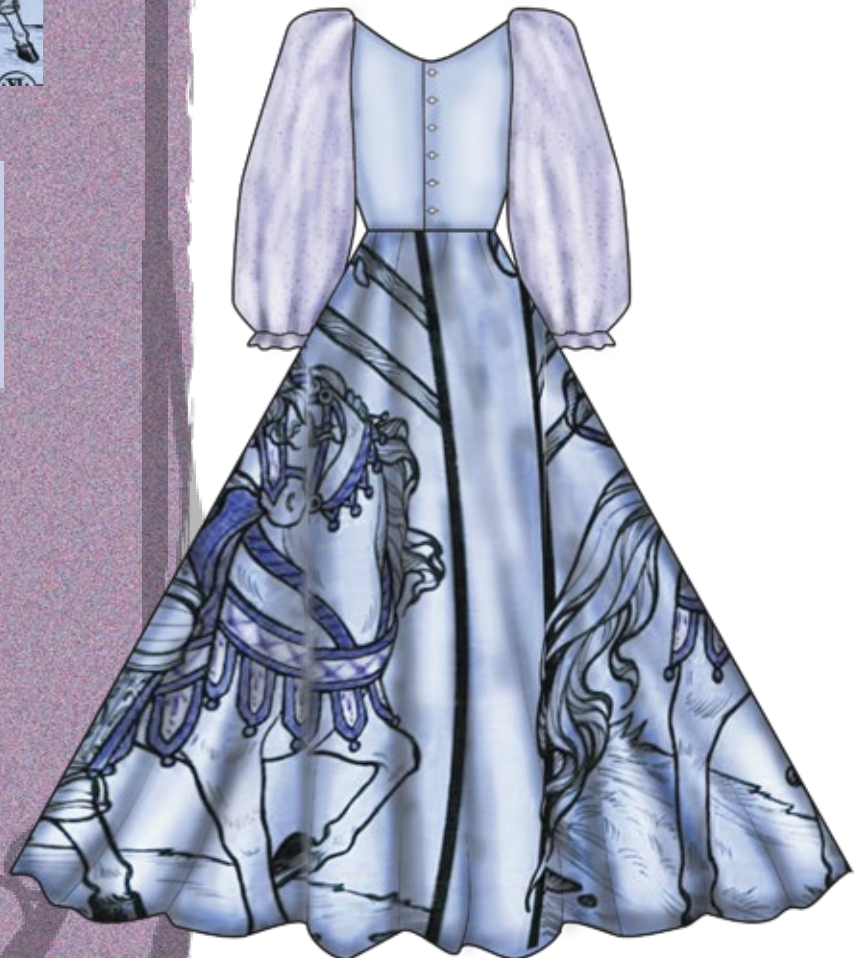
Ref. F2

Fabric
Popelin



Ref. F3

Fabric
Tulle with glitter



Bag

Supplier
Eulàlia B

Fabric supplier
Sauleda



Ref. F1

Fabric
Tweed



