

N A T A L I E

---

L A N K S C H



— P O R T F O L I O



# CONTENTS

RAWLICIOUS DELICOUS	
RENDERED FLOOR PLAN & RCP	1
PERSPECTIVE RENDER	2
WASTE	
STOP-MOTION ANIMATION	3
REFINDED LUXUARY	
PERSPECTIVE RENDER	4
VERSED SERENE	
RENDERED FLOOR PLAN	5
AMNESTY INTERNATIONAL	
POSTER DESIGN	6
FRANKI_E	
STALL DESIGN	7
ECO FRIENDLY	
RENDERED FLOOR PLAN	8
PERSPECTIVE RENDER	9
HOMUNCULI	
CLAY SCULPTURES	10
SULTRY	
RENDERED FLOOR PLAN	11
PERSPECTIVE RENDER	12
RACE LOOK	13

# HOSPITALITY

## RAWLICIOUS DELICIOUS

*RENDERED FLOOR PLAN*

*RCP*

Designing a multi-use café and retailer for existing online supplier Rawlicious Delicious. With a focus on providing adaptable and flexible spaces, the design stems from the morals of the company being hearty whole foods that are as good for you as they are the environment. Including areas for rotating pop up brands, coffee filled mornings leading into wine packed afternoons and the chief's kitchen by day transforming into a cooking class at dusk. Rendered through Adobe Illustrator and Photoshop. Drawn in AutoCAD.



FLOOR PLAN  
ELECTRICAL LIGHTING PLAN  
1:50

# HOSPITALITY

RAWLICIOUS DELICIOUS

*PERSPECTIVE RENDER*

Perspective render of a night scene featuring raw cooking classes in the kitchen and complimentary wine tastings in the seating lounge. Rendered using Adobe Illustrator and Photoshop.





# STOP MOTION

## WASTE

### *STOP-MOTION ANIMATION*

A stop-motion animation that highlights the social issues around consumerism. The subject is a chair crafted from black wire. In this narrative the chair is representing all furniture and homeware products and the wire is signifying our resources. The resources are made into a functional item and subsequently, serve that function. Until the next style, trend or advertising strategy works and the subject no longer holds any value. In Waste the chair attempts to mimic the latest trends but in the process, ends up destroying itself. Edited in Adobe Premiere.



# MULTI - RES

## REFINED LUXURY

### *PERSPECTIVE RENDER*

Apartment design in Collingwood around two distinct themes. The first luxury scheme speaks the language of the night. Showing a darker and more sophisticated palate with refined and paired back finishes. Focusing on the type of character you might find browsing Modern Times or Tait after a breakfast at Alimenatri followed by a nightcap at The Everleigh. With a deep green colour theme paired with dark metal and contrasted by white brick walls. Refined Luxury provides its tenants with a forward-thinking, industrial and refined apartment. Drawn in SketchUp, rendered in Photoshop.



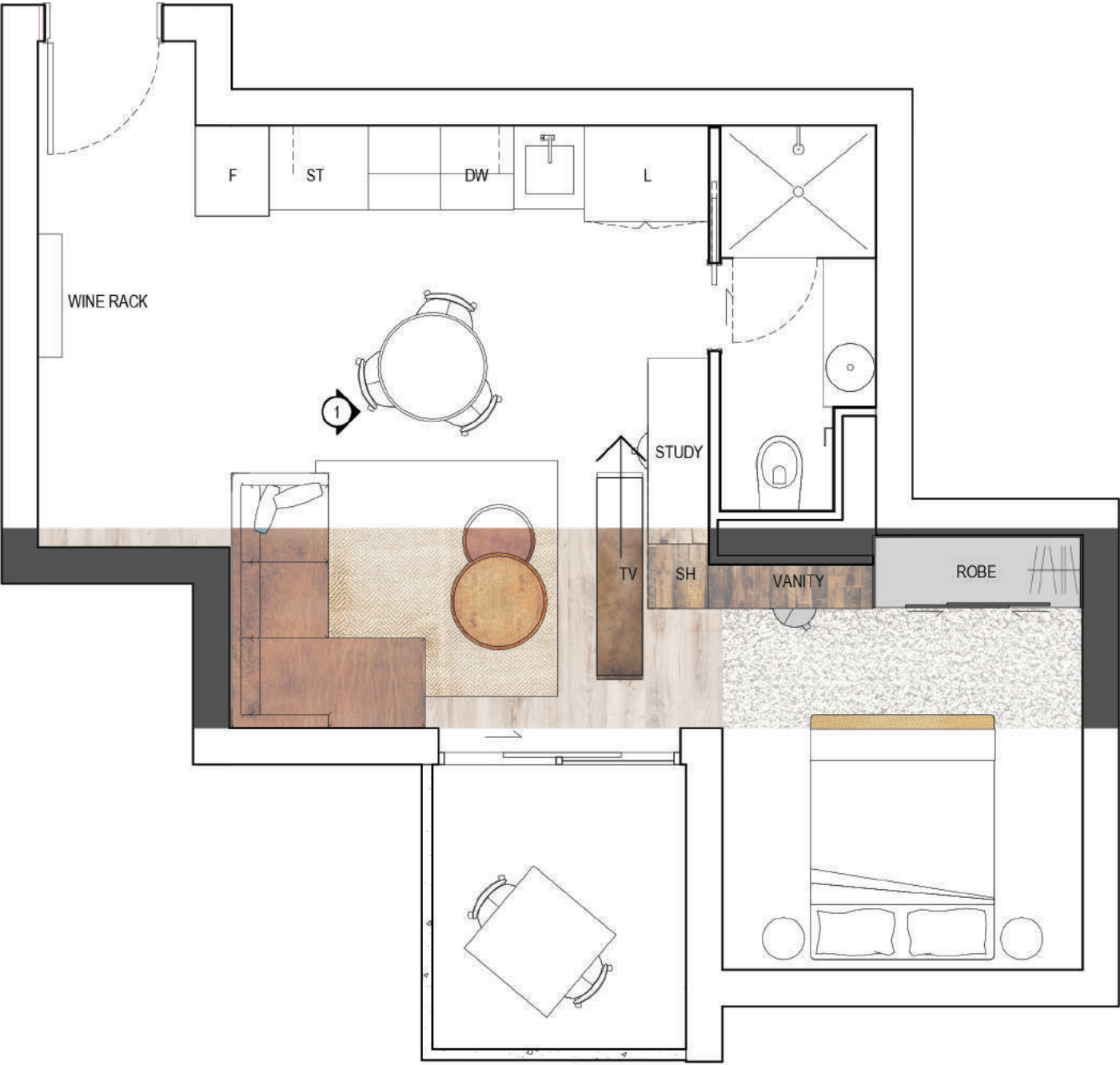


# MULTI - RES

## VERSED SERENE

### *RENDERED FLOOR PLAN*

Apartment design in Collingwood around two distinct themes. The second serene theme focuses on the type of character that you would find in an organic store or vegan cafe. Driven by op shop lovers who enjoy sipping on a matcha latte over soy milk after three months travelling through Southern America. A lively colour scheme, with an emphasis on burnt oranges and a touch of teal. Inspiration was driven by Bohemian style, incorporated with the Melbourne minimalism and travel items to feature. Day inspired the colour palette with orange and blue hues to provide vibrancy and elegance whilst maintaining an air of youthfulness. Drawn in AutoCAD rendered in Photoshop.



FLOOR PLAN

1:50

# GRAPHICS

## AMNESTY INTERNATIONAL

### *POSTER DESIGN COMPETITION*

Designing for the globally known Amnesty International being one of the world's leading companies fighting for human rights. 'Death to the death penalty' won first place in 2016. Hand illustrated, edited in Photoshop.





# DEATH TO THE DEATH PENALTY

IT MAKES KILLERS  
OF US ALL.

# COMMERCIAL

FRANKI\_E

*STALL DESIGN*

Designing an artist stall that can be adapted for a new look after six months and close by the end of the year without the waste of any materials. Using reclaimed timber for moveable frame structures that can be upcycled into another project. MYCO Mushroom material for the adjustable shelving and seaweed material for box display units. Both of which will naturally decompose. Model made from Balsa and various craft materials. Watercolour illustrations.



# RESIDENTIAL

## ECO FRIENDLY HOME

### *RENDERED FLOOR PLAN*

Incorporating sustainability into design through upcycling materials sourcing ethically made resources and creating a self-sufficient dynamic. Modelled in Sketch up, Rendered through Photoshop.





FLOORPLAN  
UPSTAIRS

1:50



FLOORPLAN  
DOWNSTAIRS

1:50

# RESIDENTIAL

ECO FRIENDLY

*PERSPECTOVE RENDER*

Incorporating sustainability into design through upcycling materials sourcing ethically made resources and creating a self-sufficient dynamic. Modelled in Sketch up, Rendered through Photoshop.



# VISUAL ARTS

## HOMUNCULI

### *CLAY SCULPTURES*

A series of clay sculptures depicting human characteristics. Homunculi don't focus on the physical attributes of an individual but rather uncover character, personality and habits with form. Blurring the line between what's on the outside versus the in. It's the good to the bad, the gracious to the unflattering.





# HOSPITALITY

## SULTRY

### *RENDERED FLOOR PLAN*

Bar design for VRC Club Stand at Flemington Racecourse. Showcasing a spectrum of colour and light to create a discordance and sense of curiosity. Inspired by the daring fashion that the races welcome, Sultry is an extension of the most extreme in the crowd. Echoing the eccentric proportions of the fascinators, vivid colours and materials. All mirrored into your taste through unconventional drinks that tantalise. Drawn in AutoCAD, rendered through Photoshop.



FLOOR PLAN  
SULTRY BAR  
1:100



# HOSPITALITY

## SULTRY

*PERSPECTIVE RENDER*

*RACE LOOK*

Perspective render of a blue and white pod scene. Utilizing the high ceilings at 5.8 meters high these pods provide luxury escape lounges. Race look of Felicity Sagar hanging in a red and pink pod on Lee Boom's hoop chair. Drawn in SketchUp, rendered through Photoshop. Photograph manipulated in Photoshop.



# HOSPITALITY

## SULTRY

### *ELEVATION A*

Elevation render of Sultry Bar scene. Emphasis on materials and tactility. Drawn in AutoCAD, rendered through Photoshop.





ELEVATION A  
SULTRY BAR

1:20





