

The background features a repeating pattern of stylized green leaves and stems, rendered in a light, sketchy style. The leaves are elongated and pointed, with some showing fine vein details. The stems are thin and curved, creating a sense of movement and organic growth.

RESIDENTIAL

Cabin Model

CONCEPT & IMAGES



CLIENT PROFILE - Chris and Jessica, both in their thirties are the owners of this 1,3702 sq. ft. cabin located on Victoria Island. They live in the cabin from January to September and rent it out the other three months of the year.

They both enjoy hiking together and have a love for plants as well as organic living. Chris and Jessica are looking for the space to give a sense of freedom and refreshment, while keeping the layout organized and neutral throughout, with a use of slight color here and there.

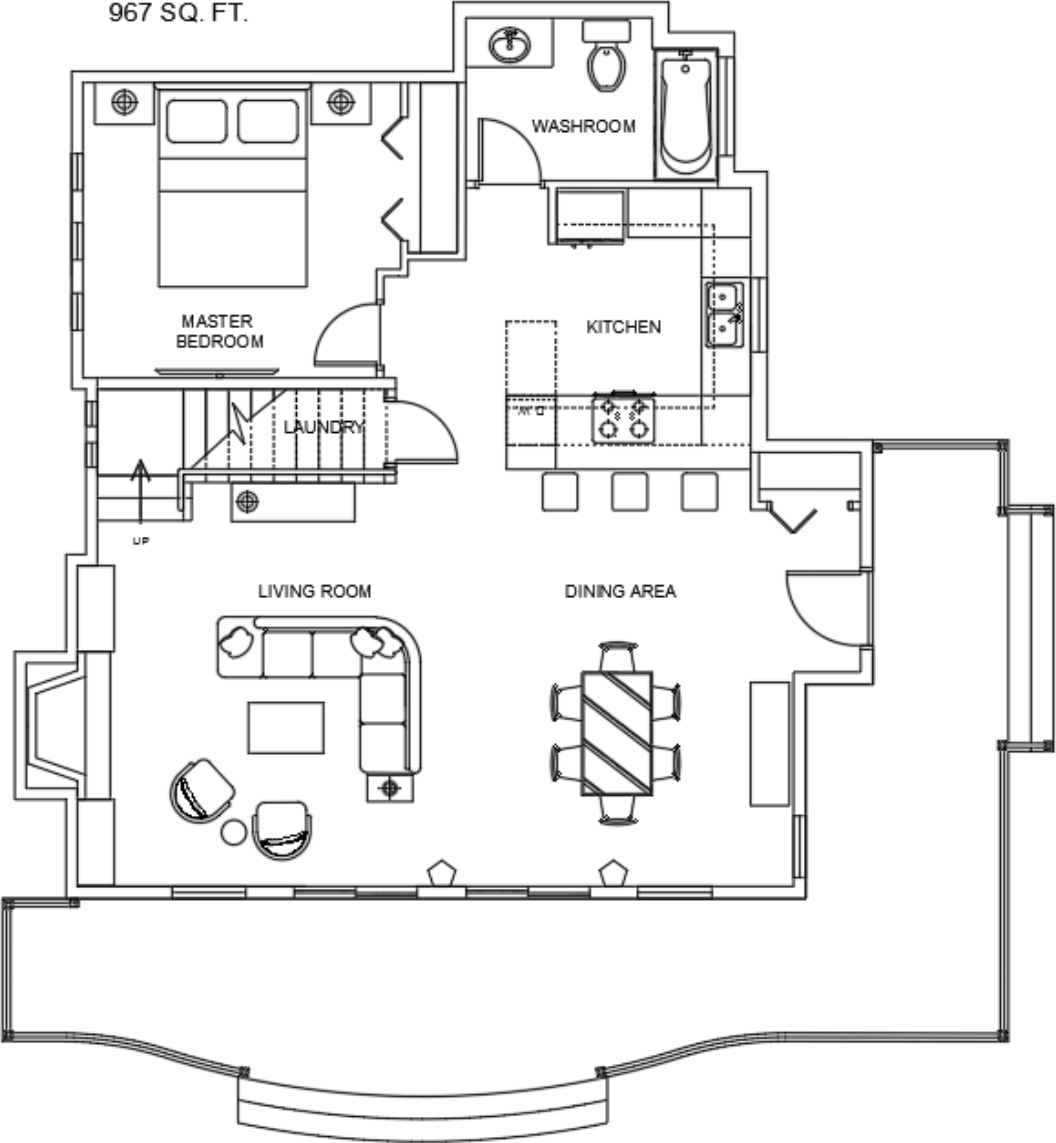
Chris is adamant about using the upper loft space to keep his grand piano, which he plays fairly often. Jessica is looking for her ornamentations and plants to be displayed in an organized fashion within the overall design and layout.

CONCEPT IDEA - My design concept is based on incorporating the natural surroundings within Victoria, including the trees and oceanic views. By using a combination of colors including mossy green, dark turquoise and warm neutrals throughout, I will be able to provide overall balance within each space.

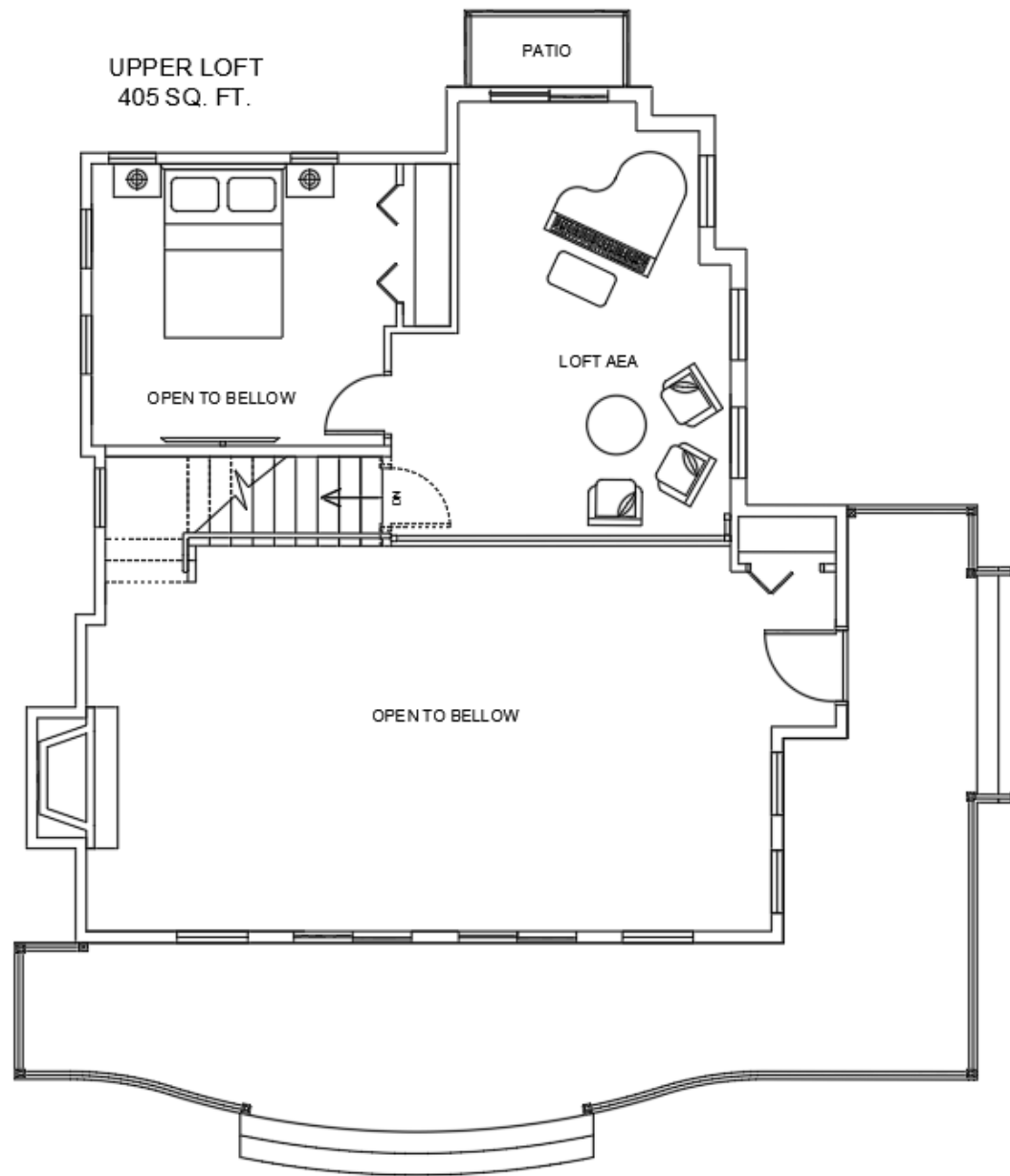
My goal is to give the cabin a contemporary, clean, yet rustic style with the feeling of natural refreshment. I will balance the whole design using organic materials and shelving to display all the small items Jessica has. My particular focus, design-wise, is to include strong shapes, simple forms and warm lighting to move the eye through each space.



MAIN FLOOR
967 SQ. FT.



1 MAIN FLOOR FURNITURE PLAN
ID2 SCALE: 3/16"=1'-0"



1 UPPER LOFT FURNITURE PLAN
ID3 SCALE: 3/16"=1'-0"



1 SOUTH WINDOW DISPLAY ELEVATION
 ID4 SCALE: 1/4"=1'-0"

MASTER BEDROOM



WASHROOM



STAIRS



LOFT AREA



LOFT VIEW



LOFT BEDROOM



DINNING AREA



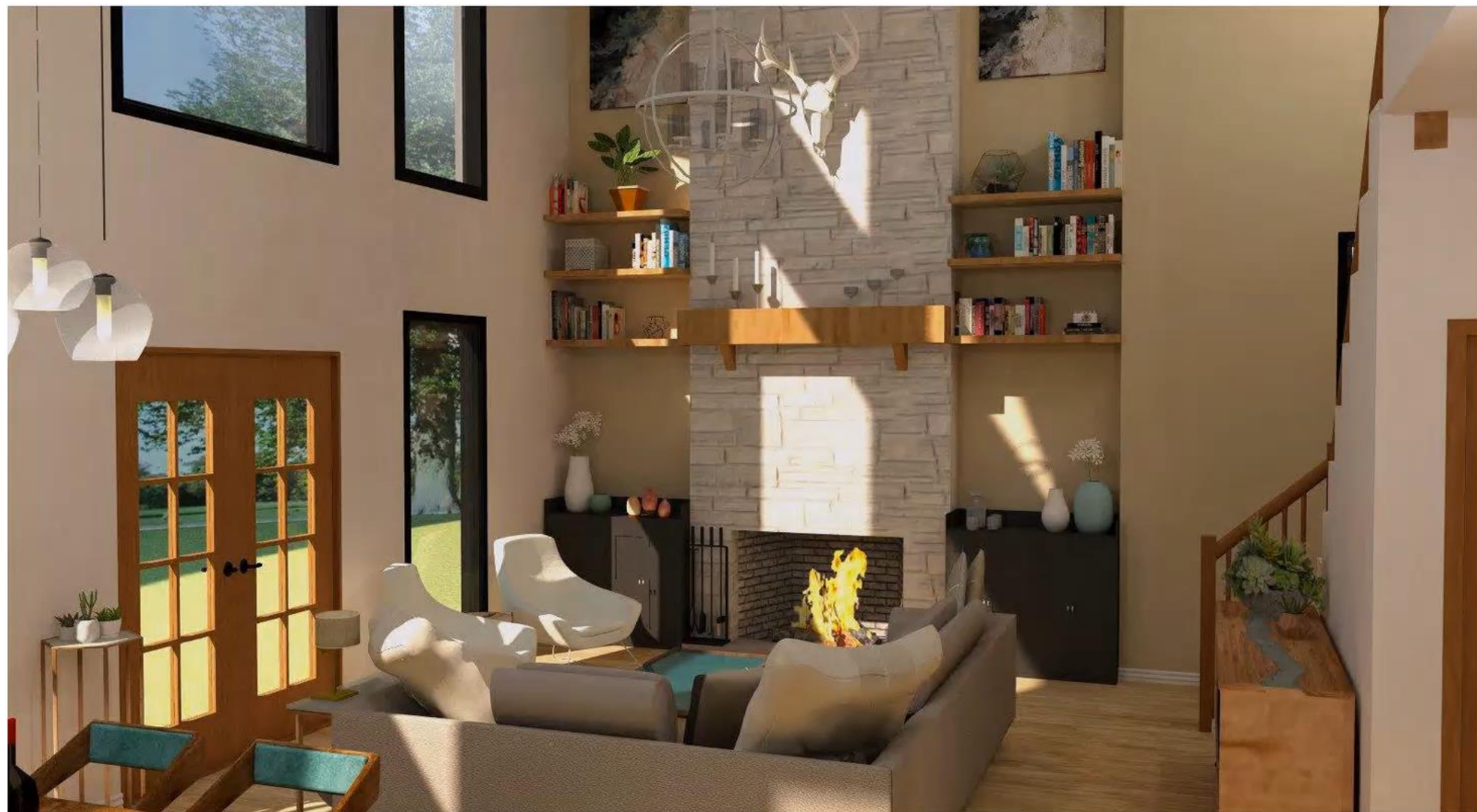
KITCHEN



KITCHEN



LIVING AREA



BIBLIOGRAPHY

- <https://snapyourcolors.com/Chip/GtV4rn>
- <https://www.stickerart.com/products/spirit-bear-sticker?variant=537726713862>
- <https://fineartamerica.com/profiles/1-linda-henry/shop>
- <http://imaginationgroup.ca/art-cards/collection/ernie-scoles>
- <http://imaginationgroup.ca/art-cards/collection/ernie-scoles>
- <http://slideplayer.com/slide/5964906/>
- <http://yolandasdrums.com/all-products-2/>
- <https://www.sacredessence.co.uk/drums-rattles-flutes-c1/rattles-maracas-c22/native-american-indian-mimbres-buffalo-talking-stick-gourd-rattle-xl-mixed-designs-sold-individually-p1836>
- <https://www.vecteezy.com/free-vector/tree-clipart>
- <http://www.dancingtoeaglespiritsociety.org/medwheel.php>
- <http://my.kwic.com/~pagodavista/schoolhouse/species/birds/nesting.htm>
- <https://clipartxtras.com/categories/view/b36efae110dee611eeeb951374bdc0a57db9ce7c/bald-eagle-feather-drawing.html>
- https://www.shutterstock.com/search/zentangle+animal?page=4&searchterm=zentangle%20animal&image_type=vector
- <https://www.saatchiart.com/art/Painting-Dances-with-Wolves/290311/1754999/view>
- <http://stevellarese.com/green-brown-color/green-brown-color-brown-green-color-palette-ideas/>
- https://libguides.uleth.ca/archaeology_great_plains/visual_resources
- <https://inhabitat.com/gorgeous-glass-house-in-the-mountains-of-kazakhstan-envelops-an-entire-tree/>
- <https://newsela.com/read/lib-native-americans-plains/id/31615/>
- <https://theresawolfatmydoor.com/page/2/>
- <http://abrarkhan.me/2018/04/tornado-foosball-table-parts.html>
- <http://rated-in-foosball-tables-u-helpful-customer-reviews-amazoncom-sheltiprofoosiiicoiopcommercialfoosballtable-sheltiprofoosiiicoiopcommercialfoosballtable-tornado-foosball-table-parts-best-jpg>
- <https://www.gametablesonline.com/60-playcraft-sport-shoot-out-air-hockey-table.html>
- <http://drericanthonyjohnson.com/the-community-factor/512/>
- <http://drericanthonyjohnson.com/the-community-factor/512/>
- <http://www.phamnews.co.uk/rocky-first-quarter-for-engineering-services/>