

TECHNICAL SHEETS

TECHNICAL SHEETS

TECHNICAL SHEETS

TECHNICAL SHEETS

TECHNICAL SHEETS

TECHNICAL SHEETS

TECHNICAL SHEETS

TECHNICAL SHEETS

ARTICLE Dress  
SEASON Mid season  
DESCRIPTION

REFERENCE Bk1  
SIZES 38

Fitted long dress made with patchwork.  
With a plunge neckline and a low-cut back and side slits.  
Single stitching on neckline, armholes and sides

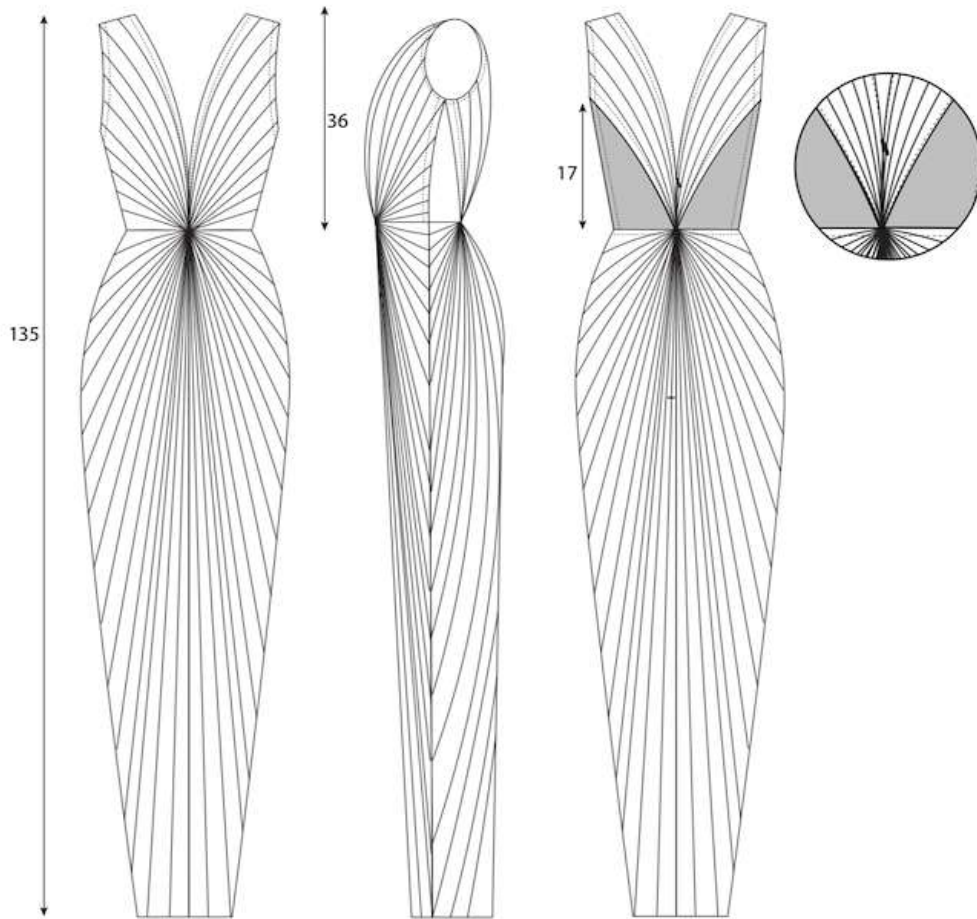
OBSERVATIONS Matching stitching  
TRIM 2345C12

REFERENCE 54-100 35.16002.8/C4

FABRIC



MESURES IN CM



ARTICLE Top  
SEASON Mid season  
DESCRIPTION

REFERENCE Bk3  
SIZES 38

Long-sleeved crop top with high neckline with a manipulation on the fabric.

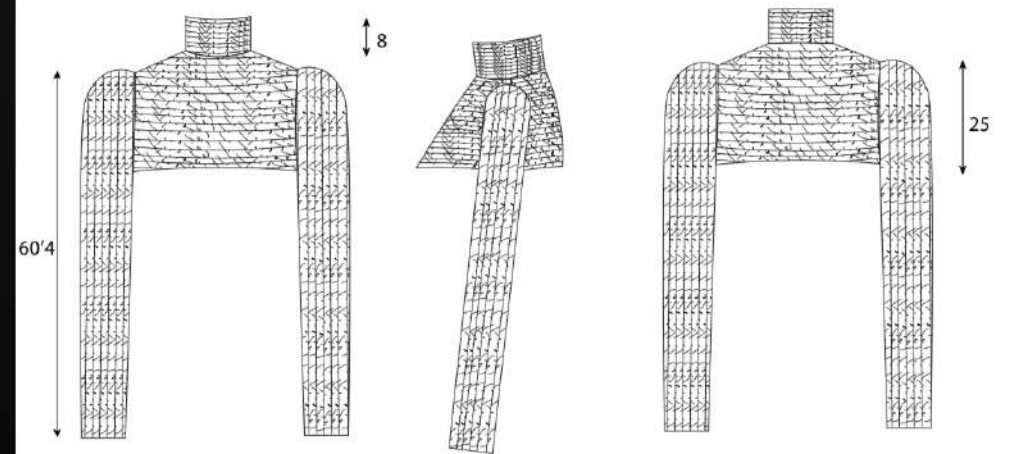
OBSERVATIONS Matching stitching  
TRIM

REFERENCE 19-004698-03/C4

FABRIC



MESURES IN CM



ARTICLE Jacket  
SEASON Mid season  
DESCRIPTION

REFERENCE Bk2  
SIZES 38

Bomber jacket with an imperial collar with a little puffed sleeves because of the belt of the sleeves.  
With a piece of organza on the left side of the jacket. With a belt on the waist.  
Opening of the jacket with hooks.

Single stitching on the neckline, on both belts and around the organza piece.

OBSERVATIONS Matching stitching

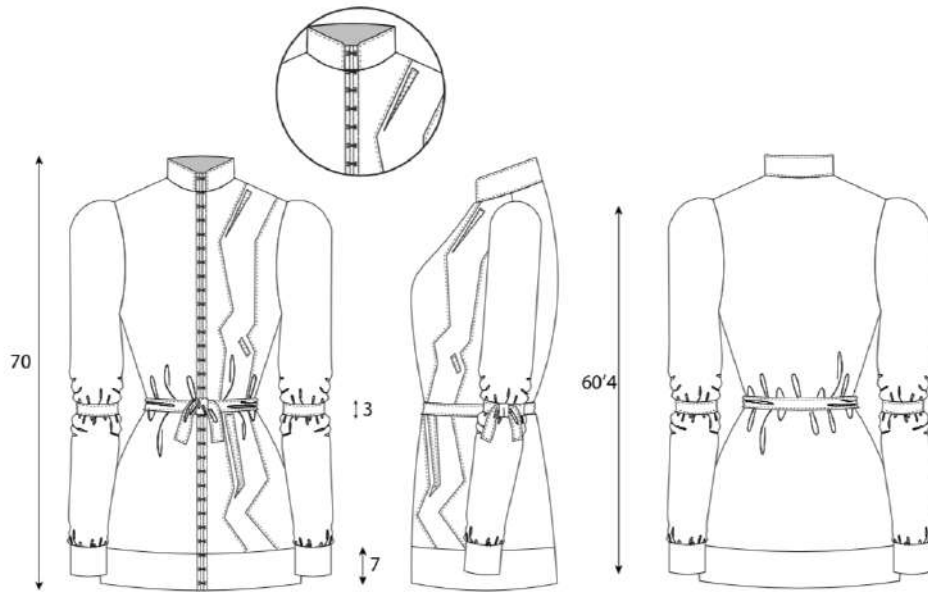
TRIM 5711C12

REFERENCE 74211-001 102-002 85-105.2

FABRIC



MESURES IN CM



ARTICLE Top  
SEASON Mid season  
DESCRIPTION

REFERENCE Bk4  
SIZES 38

Long sleeve crop top with boat neck and with manipulated fabric as a "lantern".

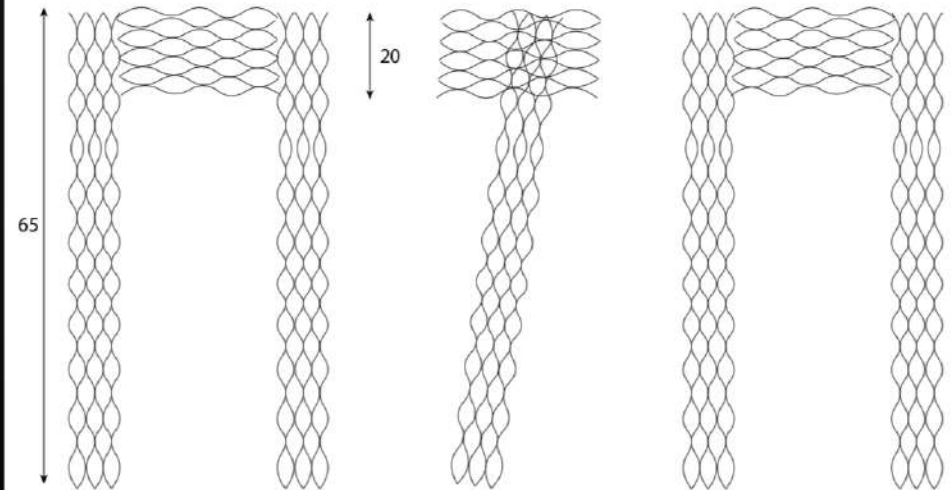
OBSERVATIONS Matching stitching  
TRIM

REFERENCE 102-002

FABRIC



MESURES IN CM



ARTICLE Dress  
SEASON Mid season  
DESCRIPTION

Wide short dress with straps.  
With women's opening and two ruffles on the top of the garment.  
With stitching at the cross, at the neckline and double stitching at the hem.

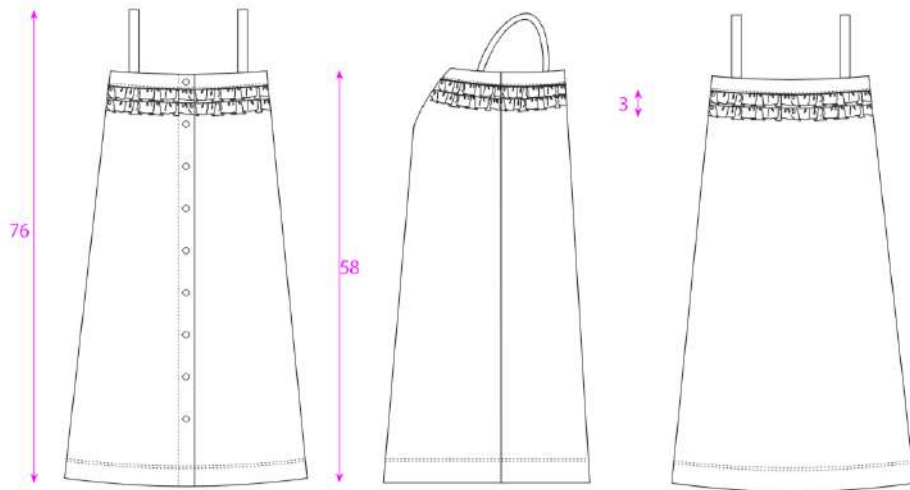
OBSERVATIONS Matching stitching  
TRIM 84023/24 C/5

REFERENCE 11220/C3

FABRIC



MESURES IN CM



ARTICLE Top  
SEASON Mid season  
DESCRIPTION

Fitted short tank top with two straps, and darts on the front.  
With two ties in the back that tie the top.  
With edge stitching on the straps, on the neckline, on the hem and on both bows

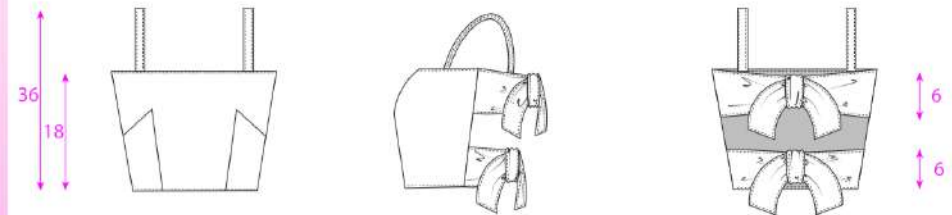
OBSERVATIONS Matching stitching  
TRIM

REFERENCE MP1 85-105.2

FABRIC



MESURES IN CM



ARTICLE Jumpsuit  
SEASON Mid season  
DESCRIPTION

REFERENCE Pk7  
SIZES 38

Jumpsuit composed of a shirt and a pants.  
Cropped shirt with woman's opening with a regular collar and double button cuffs and loop clousure.  
High bell bottom pants with center crease, back pleats and an invisible zipper in the front. With a crochet scarf on the shoulders. Edge stitching on the collar, crossover, cuffs and double stitching on the bottom of the shirt

OBSERVATIONS Matching stitching

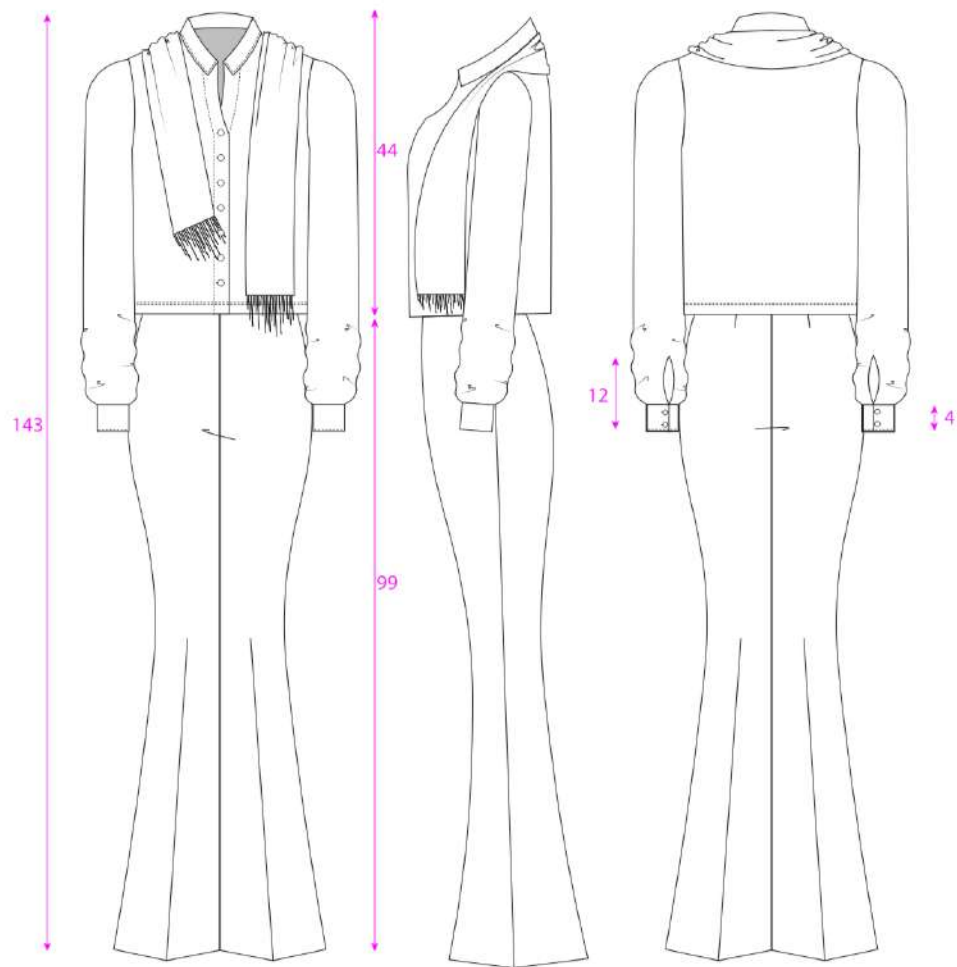
TRIM 84023/24 C/5 2345C15

REFERENCE 75648448-15/C3 TR2 62343002

FABRIC



MESURES IN CM



ARTICLE Jumpsuit  
SEASON Mid season  
DESCRIPTION

REFERENCE Pr1  
SIZES 38

Jumpsuit with halter neck top and bell bottom pants.  
Halter neck top with openings in both sides of it. Bell bottom long pants with seams throughout the length of the pants. With edge stitching on the neckline, on the straps, on the small pieces of the top and on all the seams of the trousers.

OBSERVATIONS Matching stitching

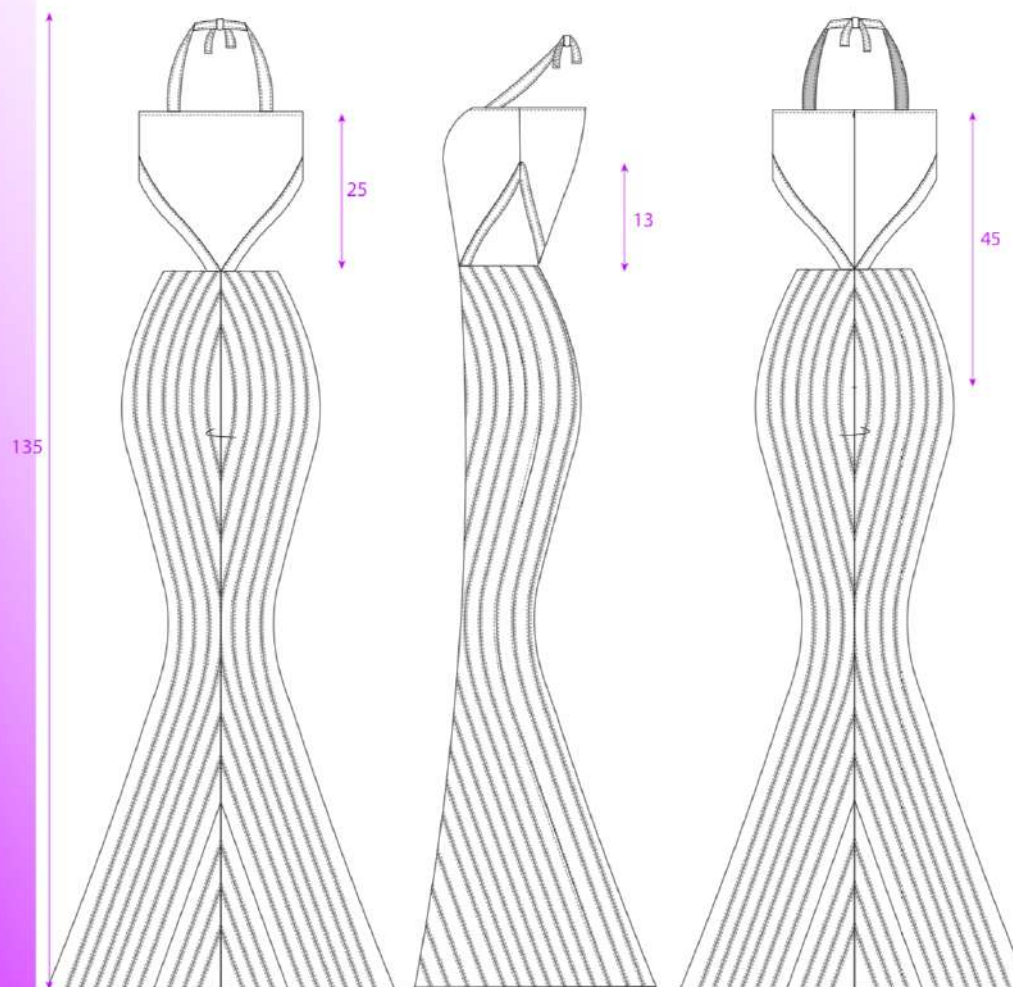
TRIM 2345C8

REFERENCE 6790-20

FABRIC



MESURES IN CM



ARTICLE Corset  
SEASON Mid season  
DESCRIPTION

Asymmetric corset made with denim jacket openenings.  
With buttons along the entire length of the opening.

REFERENCE Rd4  
SIZES 38

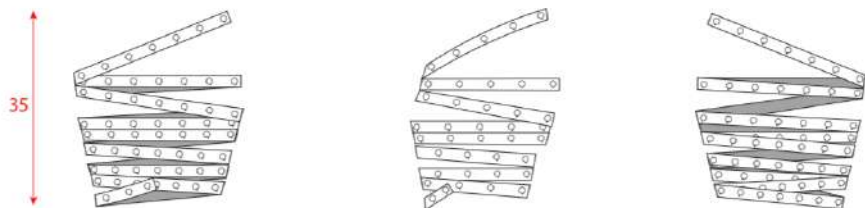
OBSERVATIONS Matching stitching  
TRIM 3424 C/70

REFERENCE 75533-006

FABRIC



MESURES IN CM



ARTICLE Jacket  
SEASON Mid season  
DESCRIPTION

Denim jacket with asymmetric hem with puffed sleeves  
Front with patch pockets with flaps, a little yoke and an oversized bow on the right side.  
On the back is has an asymmetric yoke and double button cuffs and sleeve placket.

REFERENCE Rd5  
SIZES 38

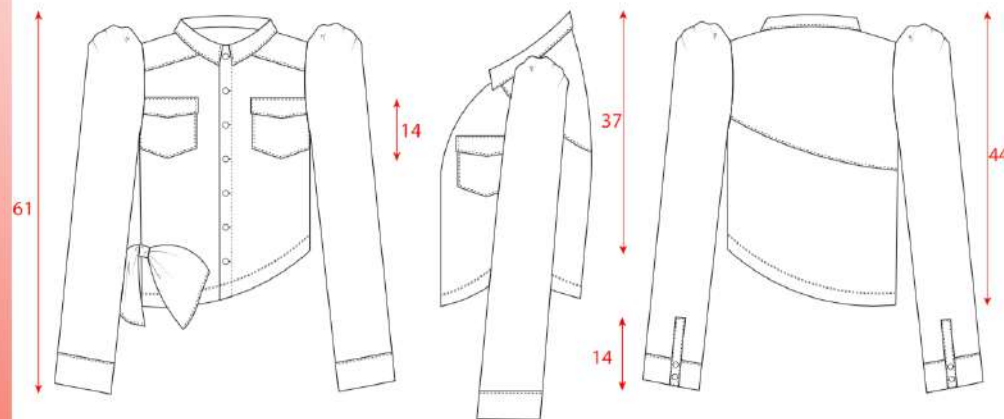
OBSERVATIONS Matching stitching  
TRIM 3424 C/70

REFERENCE 75533-006 19-010621-15

FABRIC



MESURES IN CM



ARTICLE Jumpsuit  
SEASON Mid season  
DESCRIPTION

REFERENCE Rd3  
SIZES 38

Jumpsuit composed of a blouse and wide leg pants.  
Blouse with a set-in short sleeve and imperial collar  
Long wide pants with a large godettes (front and back) with positional print in there.

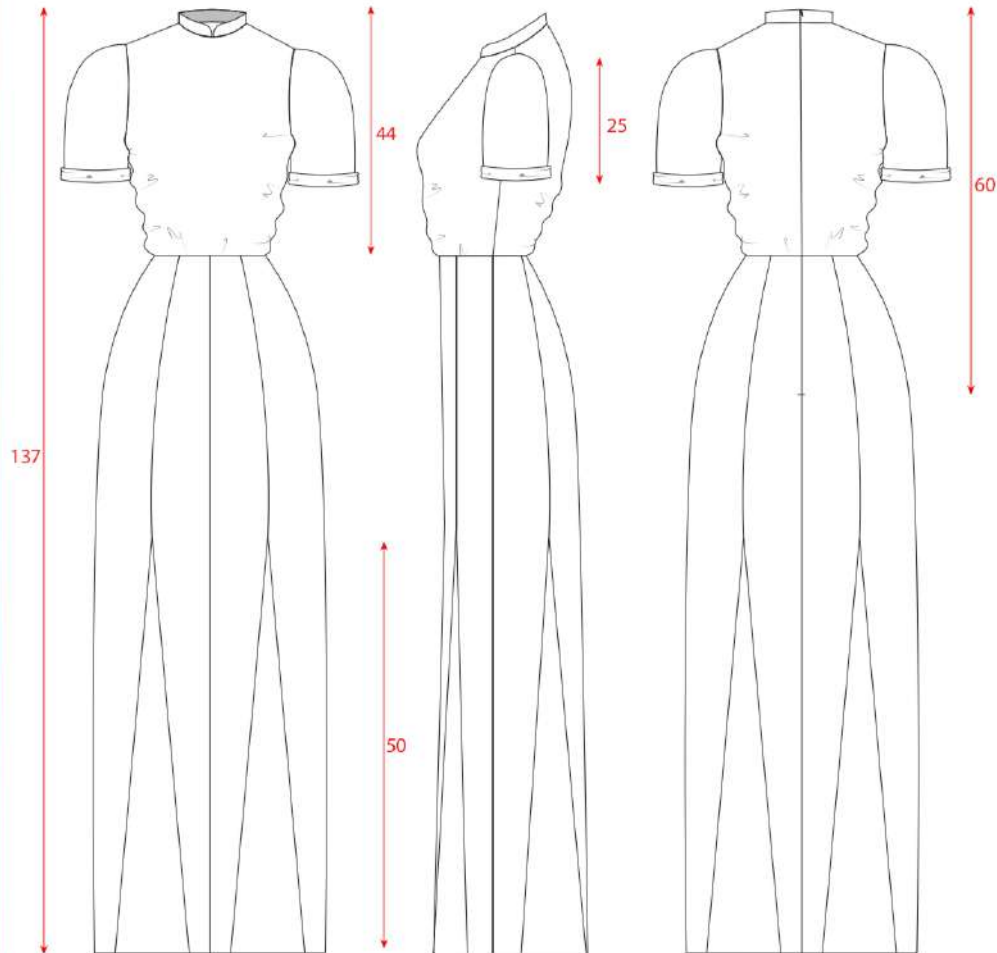
OBSERVATIONS Invisible stitching  
TRIM 2345C12

REFERENCE 19-004698-03 19-010621-13 7129-44

FABRIC



MESURES IN CM



ARTICLE Sweater  
SEASON Mid season  
DESCRIPTION

REFERENCE Y15  
SIZES 38

V-neck crochet sweater with cuff and hem ribbing.  
With an exact sweater tied with belt loops.

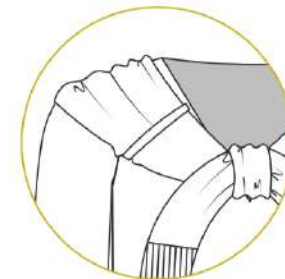
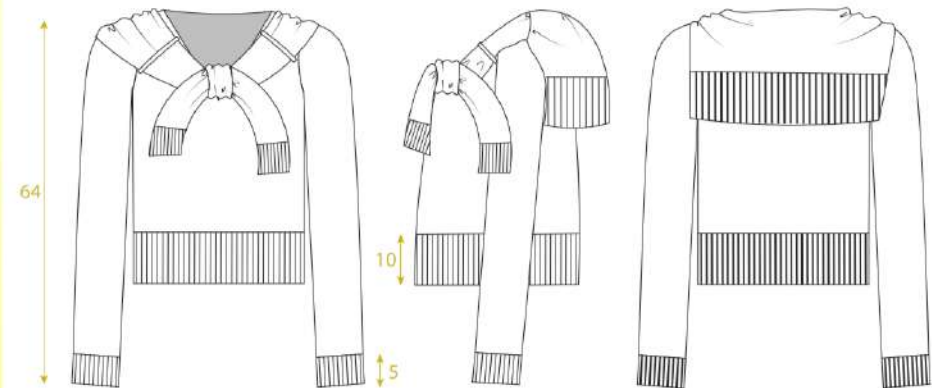
OBSERVATIONS  
TRIM

REFERENCE TR1

FABRIC



MESURES IN CM



ARTICLE Jumpsuit  
SEASON Mid season  
DESCRIPTION

REFERENCE Wh1  
SIZES 38

Jumpsuit with basic strapless neckline top and wide leg long pants.  
The pants are made with half fabric half with manipulated fabric as a "lantern".  
Edge stitching on the neckline, waist and sides of the trousers. Double stitching on the bottom of the pants.  
OBSERVATIONS Matching stitching

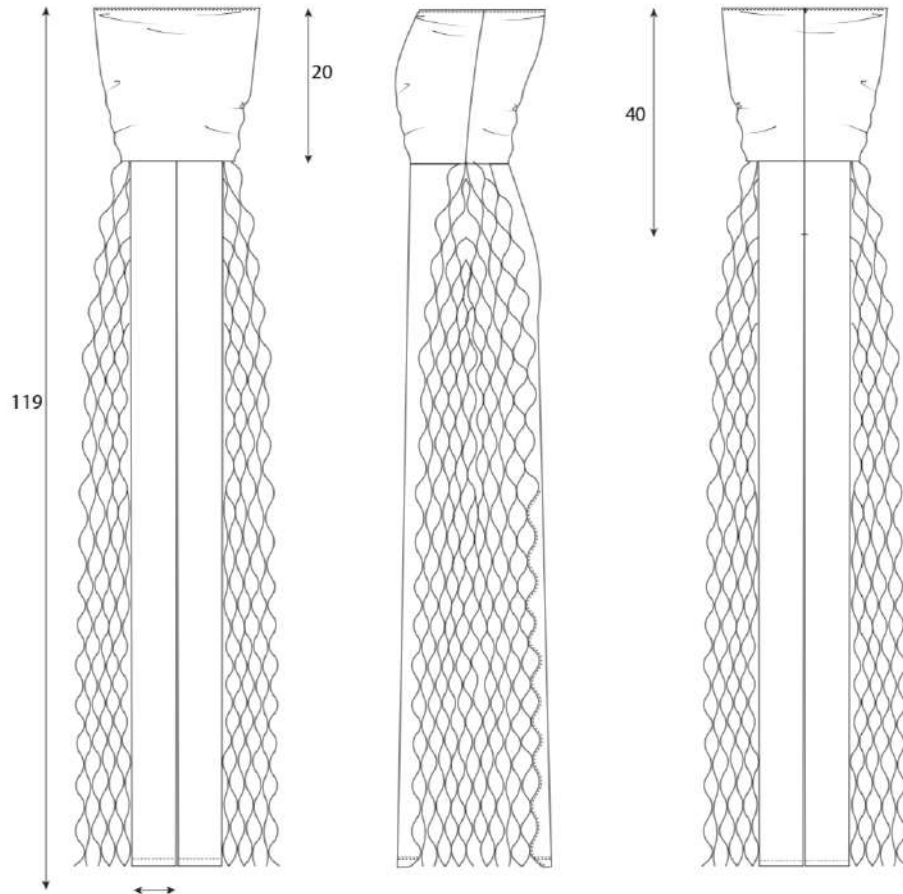
TRIM 2345C6

REFERENCE 74271-002/C4 102-002/C2

FABRIC



MESURES IN CM



ARTICLE Top  
SEASON Mid season  
DESCRIPTION

REFERENCE Wh2  
SIZES 38

High neck sleeveless top with manipulated fabric as a "lantern".

OBSERVATIONS Matching stitching  
TRIM

REFERENCE 102-002/c2

FABRIC



MESURES IN CM

