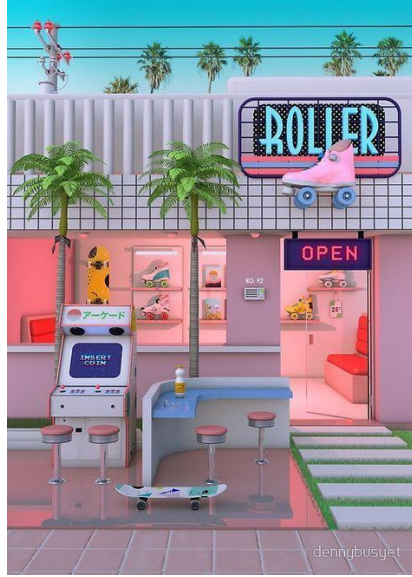


Lineup Board and Mock Model Garment Sheets

By: Sammie Barlow



Cherry Cola Summer

Line up #1: Liu Wen



HEIGHT
5'10" - 178 cm
BUST
31" - 79 cm
WAIST
24" - 61 cm
HIPS
35" - 89 cm
SHOE SIZE
8
HAIR COLOUR
Black
EYE COLOUR
Brown



ROW A
Floral Print
Godet Romper
S
FRAME
Flounce Hem
Denim Jacket
S
STEVE MADDEN
Irene Ankle
Strap Sandal
8
BRACELET
GORJANA
Kara Heart
Charm Bracelet
BAG
PAMELA
MUNSON
The Pearl Raffia
Clutch

Lineup #1: Liu Wen Look 2



- Dress: ASTR THE LABEL
- Coat: UNTAMED PETALS BY AMANDA JUDGE
- Shoes: GOLDEN GOOSE
- Bracelet: UNCOMMON JAMES BY KRISTIN CAVALLARI
- Bag: MARC JACOBS

Line up #2: Beauty Thinn



HEIGHT

5'9" 1/2 - 177 cm

BUST

30" - 76 cm

WAIST

25" - 64 cm

HIPS

36" - 91 cm

SHOE SIZE

6 1/2

HAIR COLOUR

Black

EYE COLOUR

Brown

Line up #2: Beauty Thinn



- Top: FREE PEOPLE
- Bottom: BLANKNYC
- Coat: NIKE
- Shoes: ZAC ZAC POSEN
- Necklace: PANACEA
- Earrings: CANVAS JEWELRY
- Bag: TED BAKER LONDON

Line up #2: Beauty Thinn LOOK 2



- Top: AFRM
- Bottom: RAG & BONE
- Coat: BUBISH
- Shoes: STEVE MADDEN
- Sunglasses: FENDI
- Bag: BALENCIAGA



Line up #3: Bianca Fischer



HEIGHT

5'10" - 178 cm

BUST

31" 1/2 - 80 cm

WAIST

23" 1/2 - 60 cm

HIPS

34" 1/2 - 88 cm

SHOE SIZE

5 1/2

HAIR COLOUR

Black

EYE COLOUR

Brown

Line up #3 Bianca Fischer



- Top: REFORMATION
- Bottom: BP.
- Coat: LONDON FOG
- Bag: MALI + LILI
- Shoes: BP.
- Earring: MADEWELL



Lineup #3: Bianca Fischer LOOK 2



- Jumpsuit: ROXY
- Coat: LEVI'S
- Shoes: TORY BURCH
- Bag: STRATHBERRY
- Sunglasses: BP.
- Bracelet: ALLSAINTS

Line up #4: Ming Savannah



HEIGHT

5'7" - 170 cm

BUST

30" - 76 cm

WAIST

25" - 64 cm

HIPS

32" - 81 cm

SHOE SIZE

6 1/2

HAIR COLOUR

Black

EYE COLOUR

Brow

Line up #4: Ming Savannah



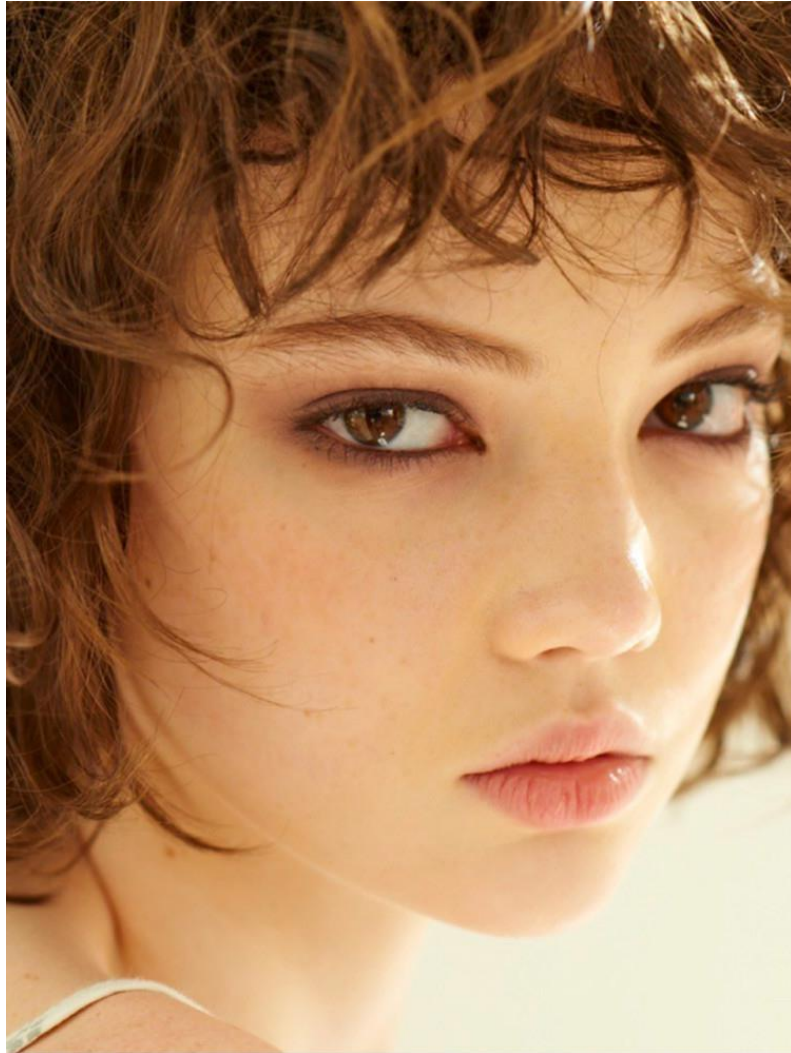
- Dress: ASTR THE LABEL
- Coat: VANS
- Heels: DOLCE VITA
- Earrings: ADIAN'S JEWELS
- Bag: STEVE MADDEN

Line up #4: Ming Savannah LOOK 2



- Top: REFORMATIO N
- Bottom: ASTR THE LABEL
- Coat: SUNDOWN BY SPLENDID
- Shoes: DOLCE VITA
- Bag: FJALLRAVEN
- Earring: TORY BURCH

Line up #5: Piper B



HEIGHT

5' 8" / 173CM

BUST

30" / 76.5CM

WAIST

24" / 60.5CM

HIP

34½" / 88CM

SHOE

7½ / 38.5

HAIR

BROWN

EYES

BROWN

Line up #5: Piper B



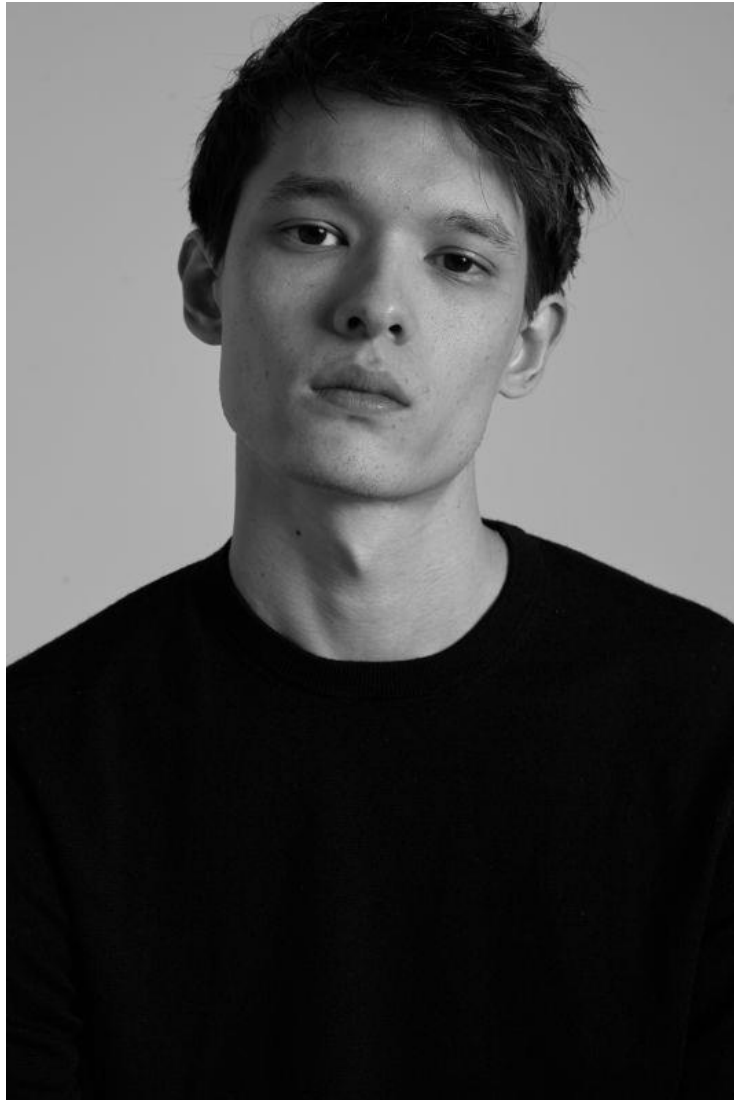
- Top: ALICE + OLIVIA
- Bottom: BISHOP + YOUNG
- Coat: VANS
- Shoes: DR. MARTENS
- Sunglasses: RAY-BAN
- Bag: HERSCHEL SUPPLY CO.

Line up #5: Piper B



- Romper: AUGUSTE
- Coat: 1017 ALYX 9SM
- Sunglasses: GUCCI
- Shoes: TORY BURCH
- Bag: TORY BURCH

Line up #6: Alex Sinclair



HEIGHT
6'1"
CHEST
35.5"
WAIST
29"
SHOE SIZE
10
HAIR COLOUR
Dark Brown
EYE COLOUR
Brown



REISS
Vincente
Jacquard T-Shirt
M
OFF-WHITE
Tie Dye Field
Jacket
XL
DESCENTE
ALLTERRAIN
Black Tapered
Trousers
30
STEVE MADDEN
Debinair Bit
Loafer
10
BELT
BURBERRY
TB Plaque
Leather Belt
30

Line up #6: Alex Sinclair LOOK 2



- Top: ACNE STUDIOS
- Bottom: CUTTER & BUCK
- Coat: ALLSAINTS
- Shoes: GOOD MAN BRAND
- Belt: SALVATORE FERRAGAMO

Line up #7: Chen Zhi



HEIGHT

6'2.5"

CHEST

37.5"

WAIST

29"

SHOE SIZE

9.5

HAIR COLOUR

Brown

EYE COLOUR

Brown

Line up #7: Chen Zhi



- Top: NATIVE YOUTH
- Bottom: HUGO
- Coat: GIVENCHY
- Shoes: MONCLER
- Hat: MONCLER

Line up #7: Chen Zhi LOOK 2



- Top: BILLIONAIRE BOYS CLUB
- Bottom: ICECREAM
- Coat: OFF-WHITE
- Shoes: CHRISTIAN LOUBOUTIN
- Socks: OFF-WHITE
- Bag: BURBERRY

Line up #8: Cyrus Laxson



HEIGHT

6'1"

WAIST

29"

SHOE SIZE

11.5

HAIR COLOUR

Brown

EYE COLOUR

Blue/Green

Line up #8: Cyrus Laxson



- Top: CLOSED
- Bottom: LIRA CLOTHING
- Shoes: PALM ANGELS
- Sunglasses: RAY-BAN
- Bag: KENZO
- Necklace: STEVE MADDEN

Line up #8: Cyrus Laxson LOOK 2



- Top: TOPMAN
- Bottom: LIRA CLOTHING
- Shoes: CLARKS
- Sunglasses: RAY-BAN
- Bag: HERSCHEL SUPPLY CO.



Line up #9: Hasen Horvath



HEIGHT

6'3"

CHEST

39.5"

WAIST

31"

SHOE SIZE

10.5

HAIR COLOUR

Brown

EYE COLOUR

Brown

Line up #9: Hasen Horvath



- Top: GUCCI
- Undershirt: COMME DES GARCONS PLAY
- Bottom: NEIL BARRETT
- Shoes: KENNETH COLE NEW YORK
- Socks: Palm Angels
- Belt: BURBERRY

Line up #9: Hasen Horvath LOOK 2



- Top: 3.1 PHILLIP LIM
- Bottom: JULIUS
- Coat: CANADA GOOSE
- Shoes: GIUSPPE ZANOTTI
- Hat: RAG & BONE

Line up #10: Chris Diaz



HEIGHT

6'1.5"

CHEST

38"

WAIST

32"

SHOE SIZE

12

HAIR COLOUR

Light Brown

EYE COLOUR

Brown

Line up #10: Chris Diaz



- Top: GIVENCHY
- Bottom: WORSTOK
- Coat: CLOSED
- Shoes: FEAR OF GOD
- Sunglasses: RAY-BAN

Line up #10: Chris Diaz LOOK 2



- Top: AMBUSH
- Undershirt: AMBUSH
- Bottom: RAG & BONE
- Shoes: BP.
- Belt Bag: TOPO DESIGNS
- Hat: ALLSAINTS