



# Garment Detail Analysis

Cristabela & Arrum Syahrizal



Mekanisme Garment



FRONT

BACK

# Dress

INNER FRONT

INNER BACK



# Details



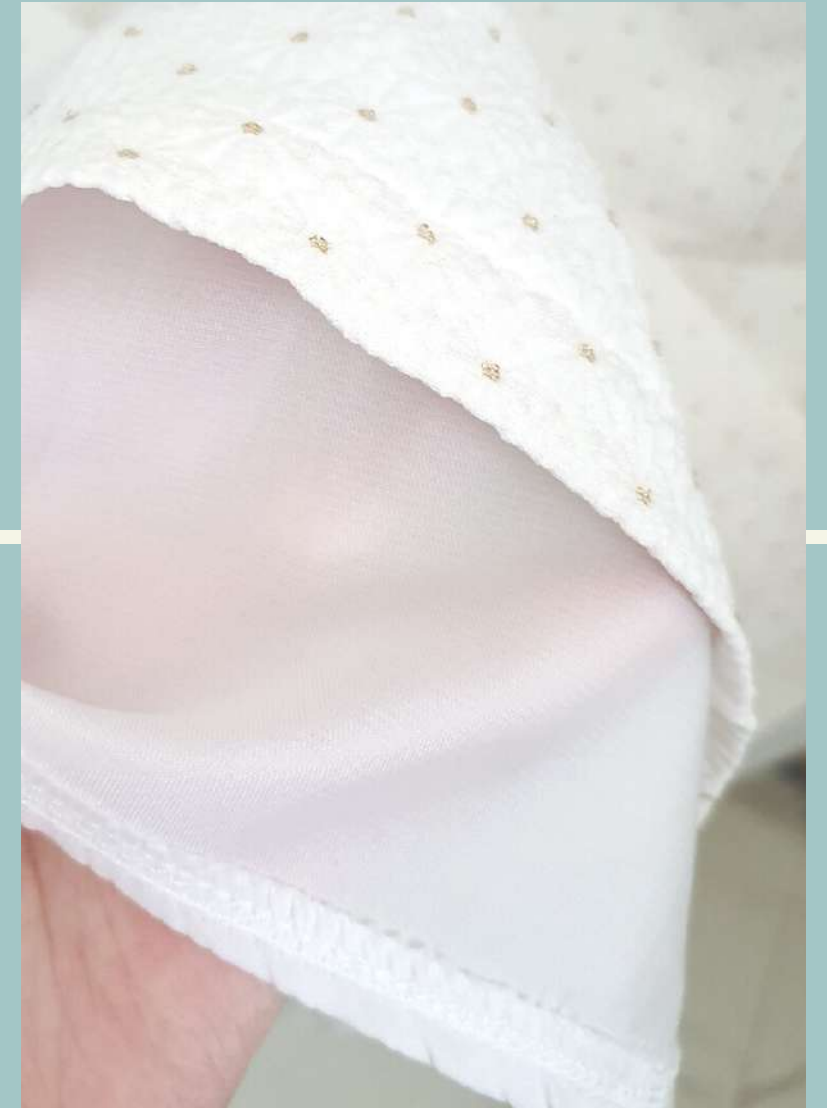
Invisible zipper detail on  
center back



Princess line detail

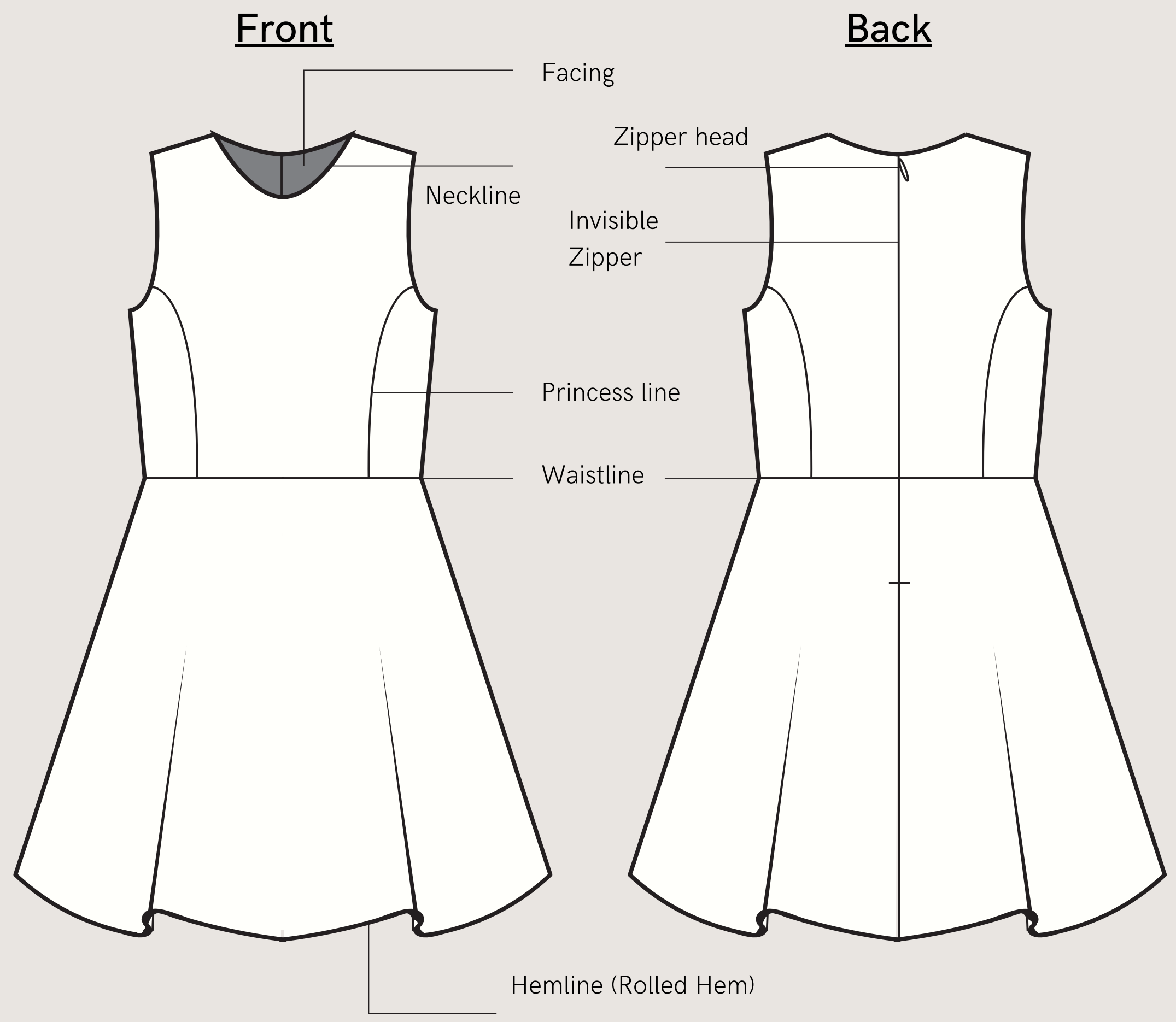


Facing and lining detail, side  
dart on lining



Hemline finishing detail

# Dress Technical Drawing



## Design Sheet

**Product Category:**  
Dresses

**Brand Name:**  
Chic Simple

**Color:**  
Off-white

**Fabric:**  
Cotton & Polyester

**Style Description:**  
1/4 circular sleeveless lined above knee-length dress with two princess lines on front, two princess lines on back, rolled hem, and invisible zipper on CB

# Dress Technical Drawing



## Inner Details

### Additional Details:

- Open lining with overlocked edges.
- Lining is shorter than the outer fabric and has A-line silhouette.
- No waistline on lining.

FRONT



# Shirt



BACK

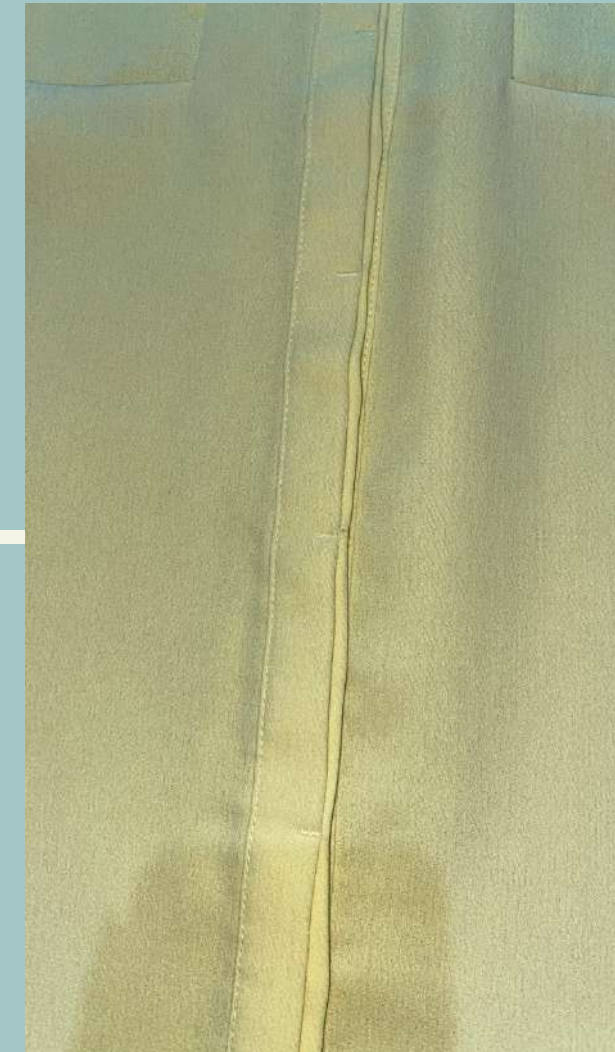
# Details



Collar & Collar stand



Pocket



Placket buttons

# Details



Sleeve placket



Cuff



Yoke & Pleats

# Dress Technical Drawing



## Design Sheet

**Product Category:**  
Shirt

**Color:**  
Yellow

**Style Description:**  
Shirt with long cuffed-sleeves, seven hidden buttons with placket, two patch pockets on front, yoke, and two pleats on back.