

Personal -project

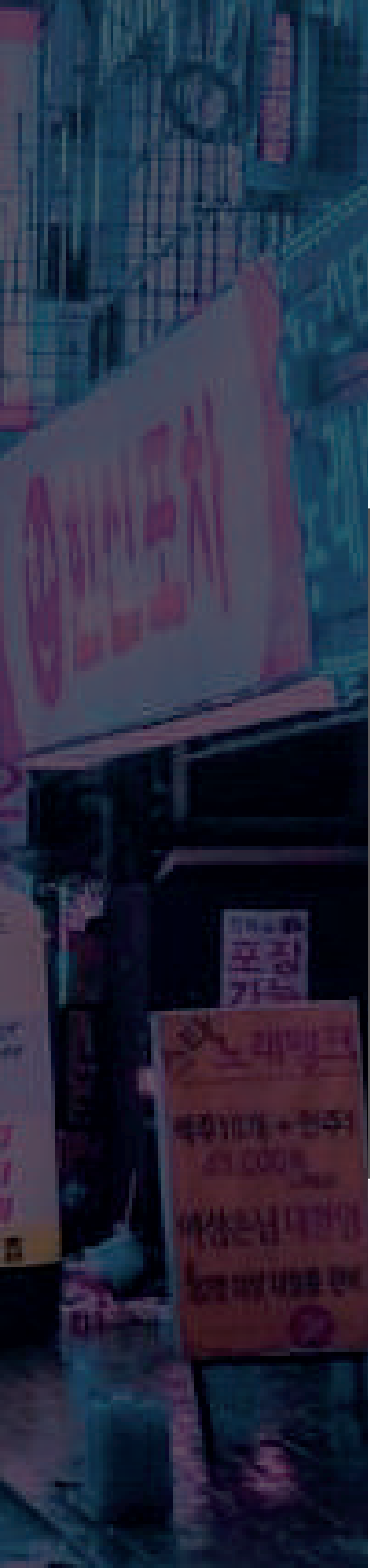
Cyberpunk



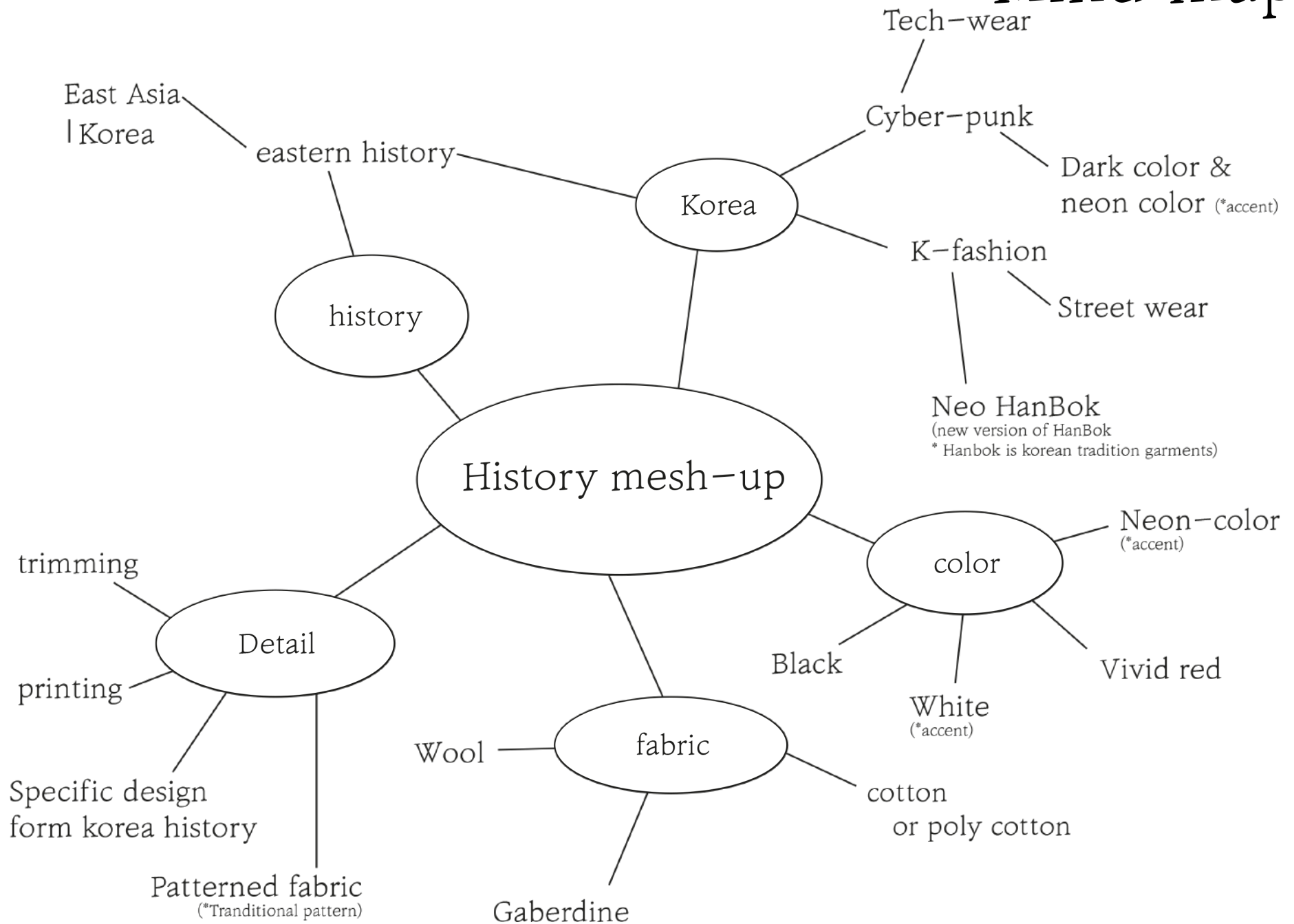
Personal project

The Exit exam project is totally free topic to design and make a commercial brand.

My theme is Korean traditional cyberpunk.



Mind map



Fashion phenomenon: K-pop

Start with Psy's Gangnam Style

BTS swept the world with K-pop

Influences various age groups

Giant fandom

A leader in various trends

Neo Hanbok & Clienteles

HanBok – traditional Korean garments

Neo HanBok – “new hanbok” in Korean

Modern trends, with comfortable wearing

Eliminating the prejudice of traditional garments

For SS2021, commercial position and Ready to wear collection.

Street wear.

women between 20 and 30 years old and live in the city.

Annual salary is between \$50,000 and \$70,000 as full-time worker.

Competitors

1. 0608Wear



2. A WENDE



3. Llse



Techware their important design.

price range between \$ 65 to \$ 350.

street fashions based on practical design, with funky feel.

easily adjust the length and width of the garment, depending on body type.

The main colors are black, followed by white, vivid colors for points.

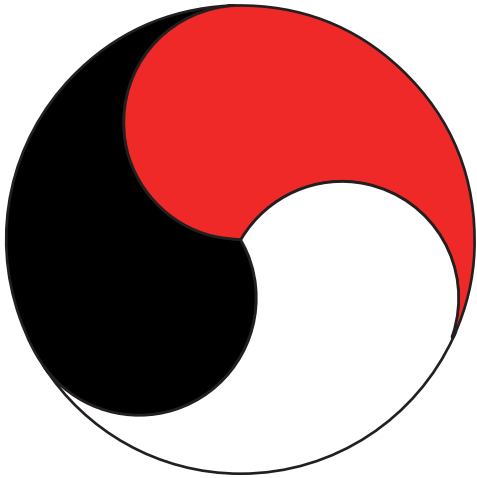
using gabardine, wool, fake leather or polycotton, and a polyester lining.



Moodboard



Preliminary thematic board



Black: P179 – 16C

Red: P55–8C

White: P1–1C

*Pantone color

Tech wear with Korean elements.

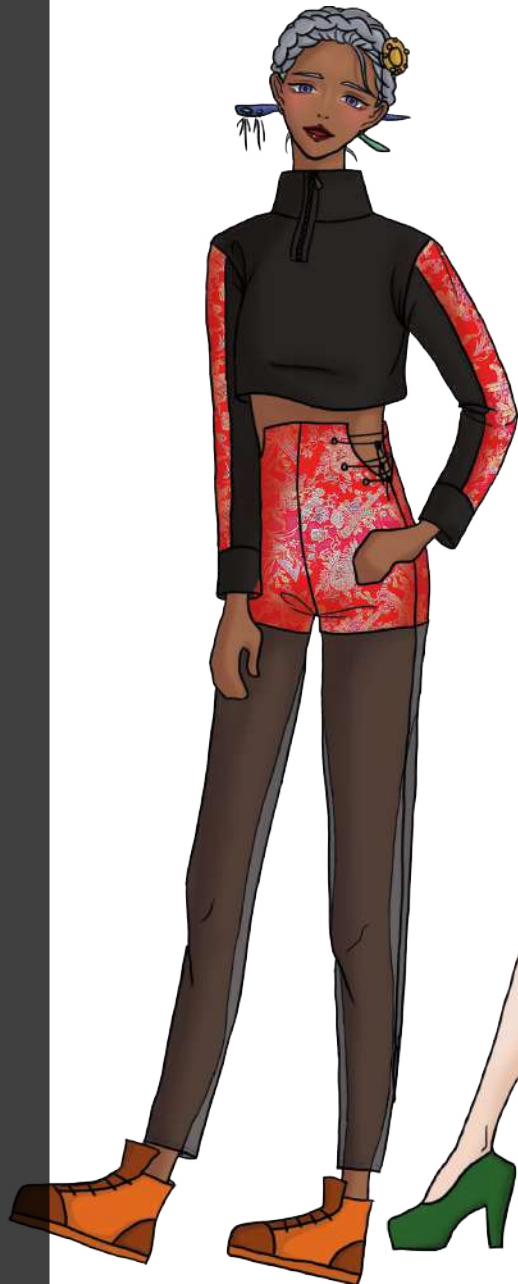
Simple, but trims will make the clothes interesting.

A-line or H-line.

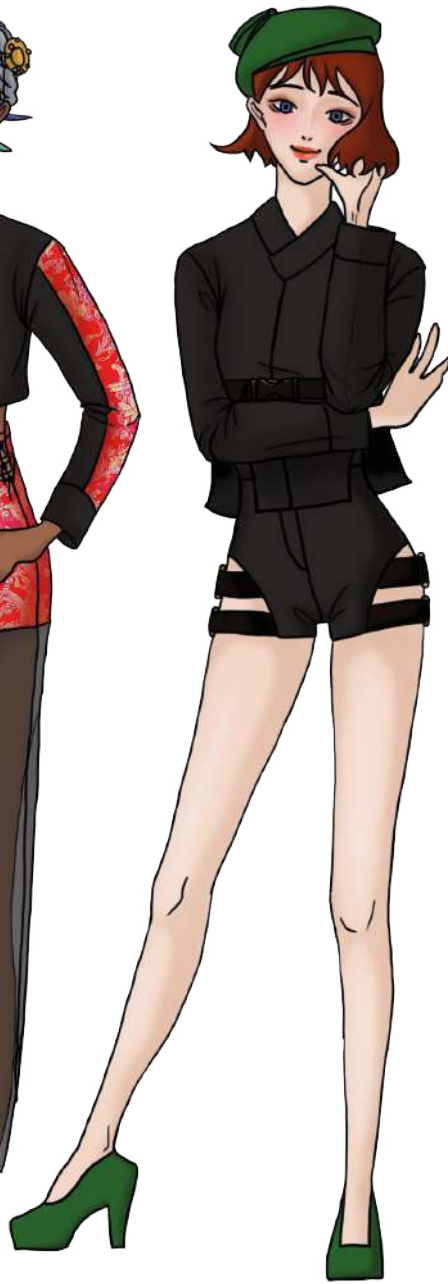
Main colors are black, white and red



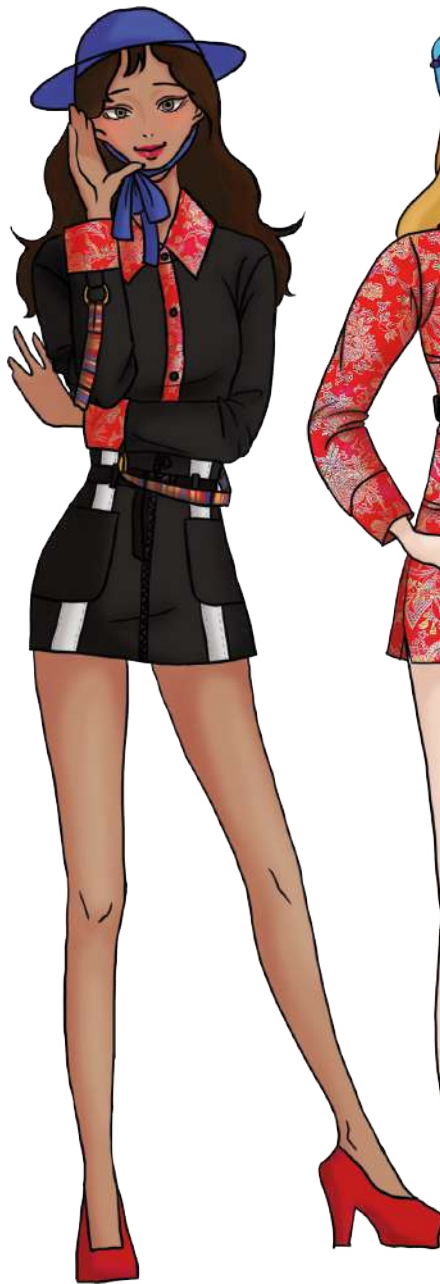
Illustrations



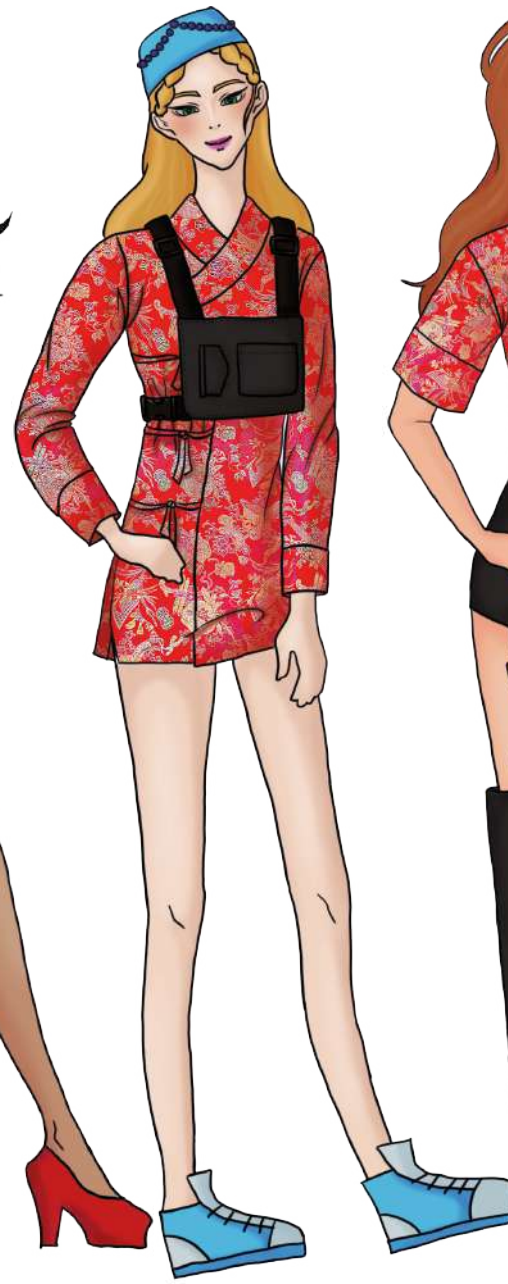
Look #1



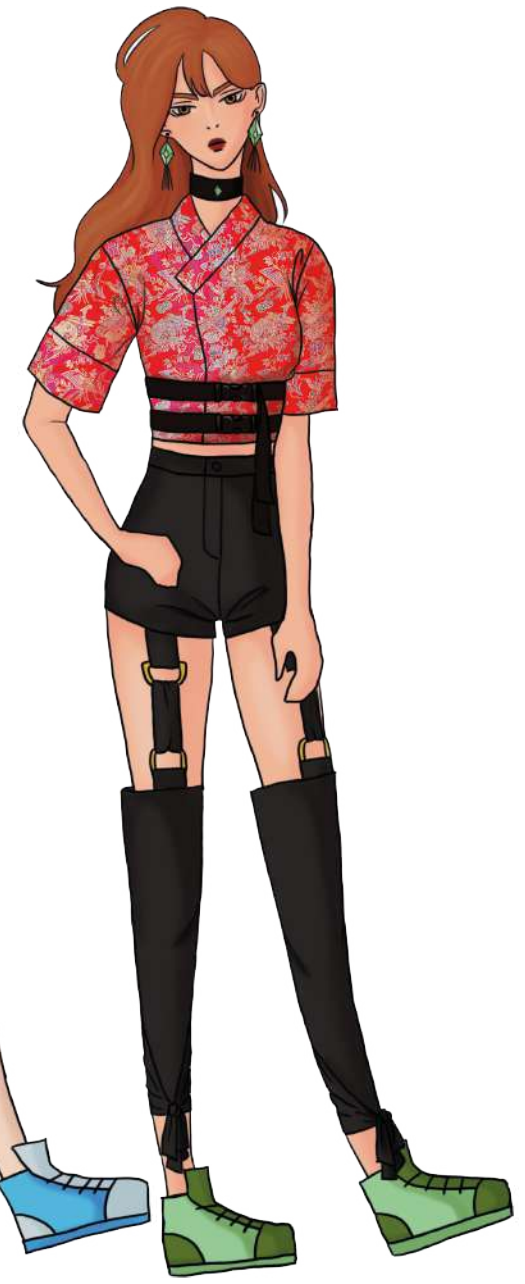
Look #2



Look #3



Look #4



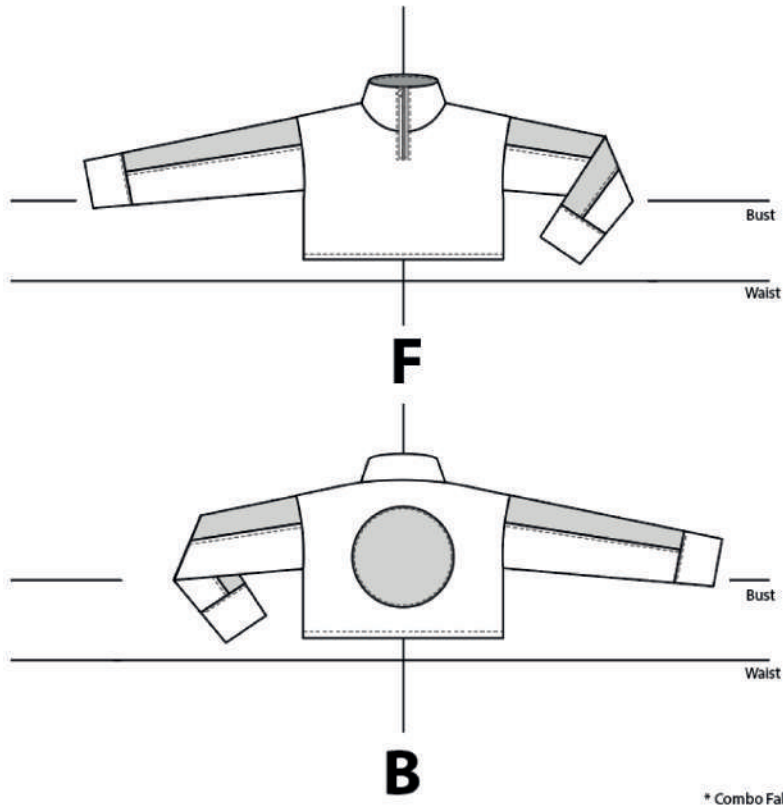
Look #5

Flat-look#1

style number : 21SS101L

Name : Youjeong Soung Style number : 21SS201L

Name : Youjeong Soung



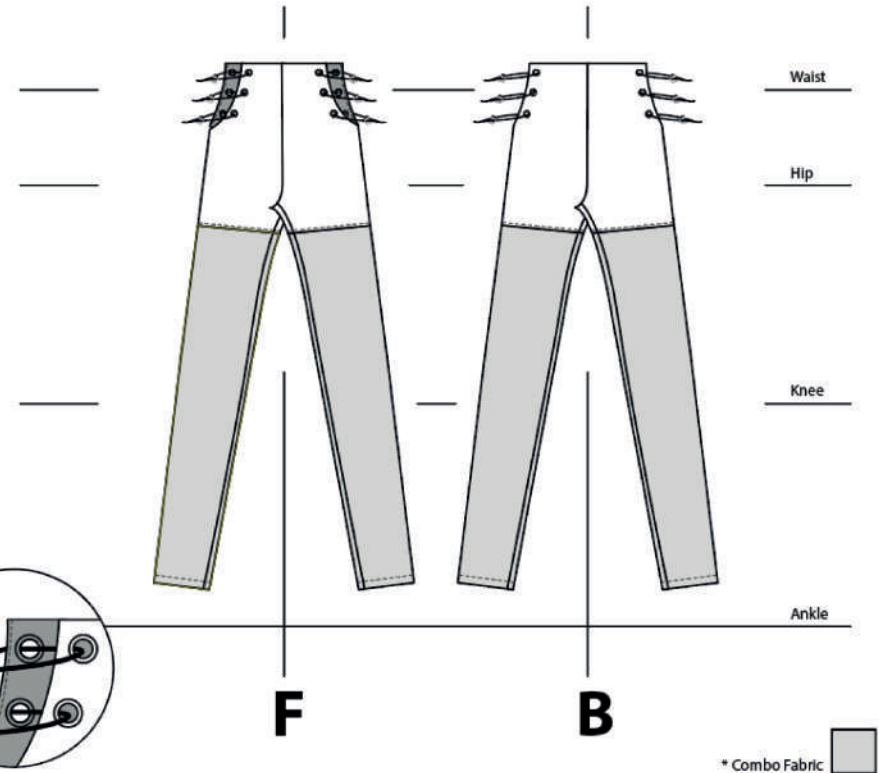
Description Ladies loose T-shirt with turtle neck with facing , drop shoulder, long-sleeve with combo fabric cuffs, combo fabric on back, opening on center front

Opening system one 20cm plastic zipper - closed end self-colored on center front

Topstitching single needle, self-colored 0.2cm top stitch on zipper close, cuffs, arm-holes, combo fabric on back and facing, 1cm top stitch on hem

Interfacing fusible interfacing on front and back facing

Special instructions seams are pressed open



Description Ladies semi-fitted high waist tapered fit pants with combo fabric and facing, 6 eyelets for each side for opening

Opening system 1.5cm diameter iron bronze color 6 eyelets for each side, 25cm elastic black cord for each sets of eyelets and three cord stops for each side

Topstitching single needle, self-colored 0.5cm top stitch on self fabric hem, self-colored 1cm top stitch on combo fabric hem

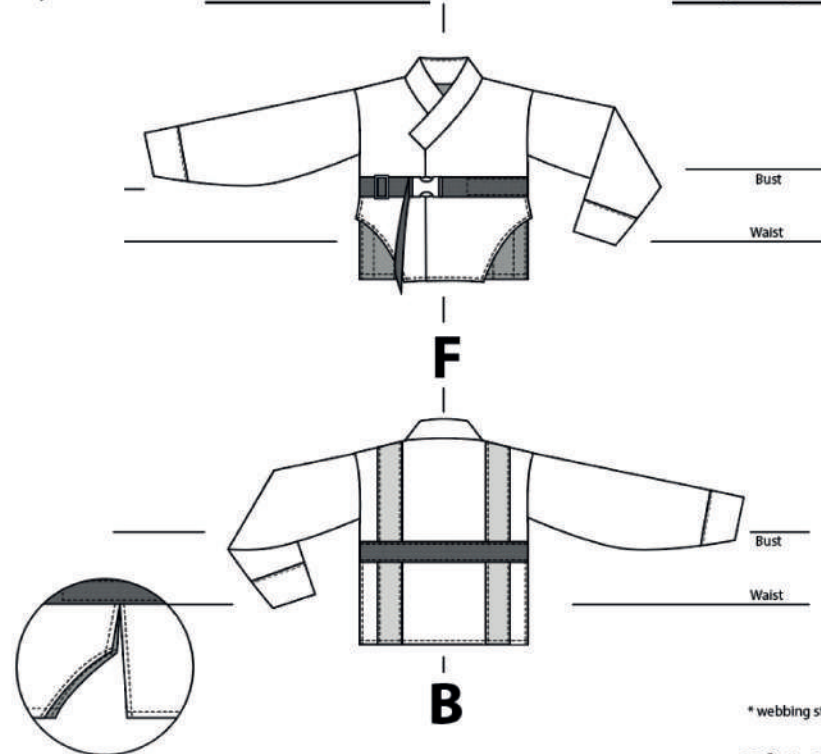
Interfacing fusible interfacing on front and back facing

Special instructions self fabric hems are pressed towards self-fabric, 0.2cm under-stitch on front and back facing

Flat-look#2

Style number : 21SS102L

Name : Youjeong Soung



Description Ladies loose shirt with Korean traditional collar, drop shoulder, Korean traditional shape sleeves with cuffs and facing, a buckle opening with black webbing strap and a strap adjuster, two reflective straps on back

Opening system 2.5cm width poly nylon black webbing strap and one 3.6cm black plastic buckle for opening on front, one 3.6cm black plastic strap adjuster.

Trims two 3.8cm reflective straps on back

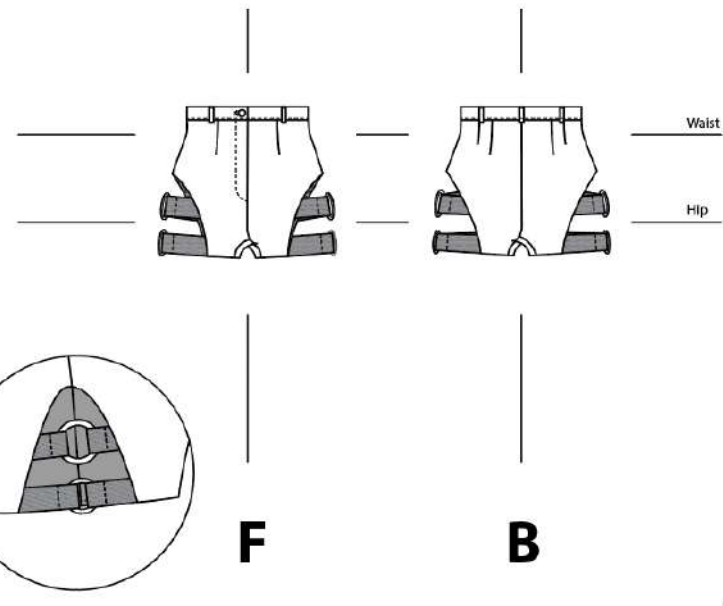
Topstitching single needle, self-colored 0.2cm top stitch on cuffs and back reflective straps, 0.5cm top stitch on front & back strap, on front and back side seams, on front edge, 1cm topstitch on hem

Interfacing fusible interfacing on front and back facing, cuffs and collar

Special instructions front opening is partially sewn by top-stitching. 0.2cm under-stitch on collar. opening is left on right. arch shaped sleeve

Style number : 21SS202L

Name : Youjeong Soung



Description Ladies high waist, four darts on front and two darts on back, high cut shorts with 5 belt loops and a buttoned closure and hem facing, a front fly with 4 elastic bands for each side and 2 O-rings each side

Opening system 16cm nylon coil closed end, self-colored on front waistband / line #16 button, 4 holes, 1 plastic button DTM / 1 key button hole, machined stitches on waistband center front

Trims 2 O-rings - 3.5cm diameter, gold and iron, 2 O-rings - 5cm diameter gold iron and 25mm braided black elastic

Topstitching single needle, self-colored 0.2cm top stitch on waistband belt loops and 1.5cm top top stitch on elastic

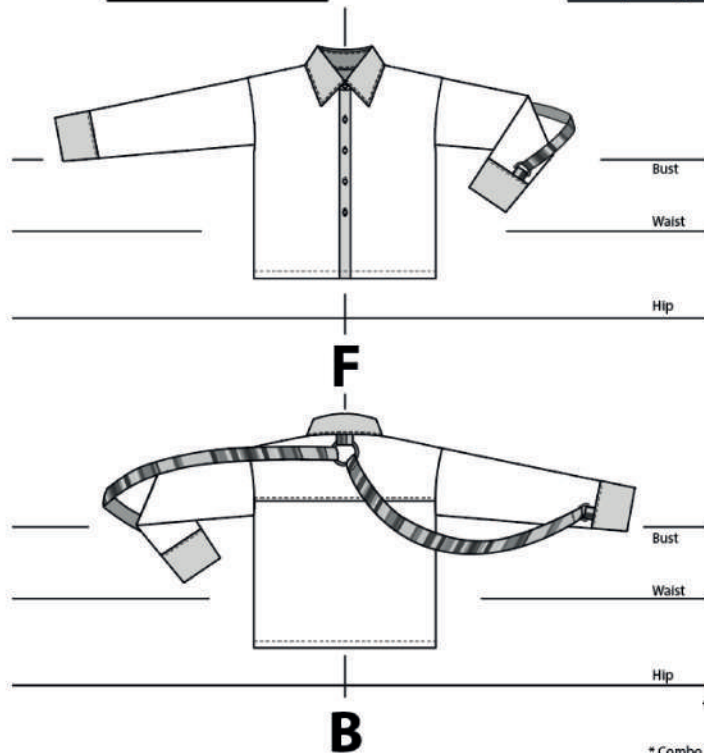
Interfacing fusible interfacing on waistband and pants hem facing and a fly

Special instructions under stitch on pants hem facing, seams are pressed open, hem facing, invisible stitch for pants facing

Flat-look#3

Style number : 21SS103L

Name : Youjeong Soung



Description Ladies loose shirt with facing, drop shoulder, shirt collar with stand, yoke on back, sleeve with cuff, O-ring on center back, D-ring on each back cuff

Opening system Line #16, 4 holes, 5 plastic buttons DTM & 5 key holes, machine stitched on button extension

Trims 1 O-ring - 5cm diameter, gold, iron on center back & 1 D-ring on each back cuff - 4.5cm diameter, gold, iron, strap for O-ring and D-ring - 1cm width

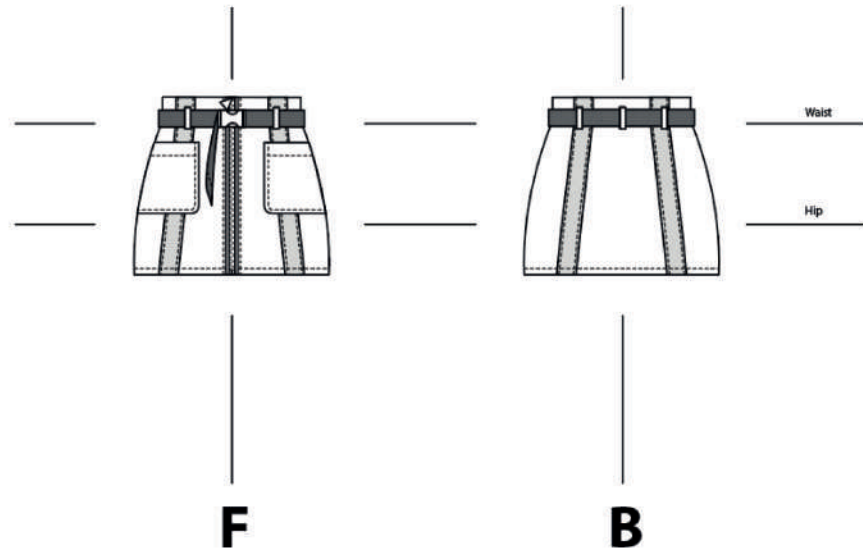
Topstitching single needle self-colored top stitch 0.5cm on shirt collar, back yoke, 0.2cm top stitch on cuffs, 1.5cm top stitch on hem

Interfacing fusible interfacing on cuffs, collar, collar stand, button extension, tabs and yoke

Special instructions seams are pressed open

Style number : 21SS203L

Name : Youjeong Soung



Description Ladies high waist short skirt with facing, A silhouette, 5 belt loops on waist, zipper closure on center front with a buckle and webbing strap, two patch pockets on front, two darts on front and back covered by reflective straps

Opening system one 45cm plastic zipper open end, self-colored on center front

Trims two 3.8cm width Reflective straps on each front and back princess seam, 2.5cm width black webbing strap and a buckle for waist belt

Topstitching single needle, self-colored 0.2cm top-stitch on reflective straps and belt loops, 0.5cm top stitch on front zipper and patch pocket, 1.5cm top stitch on skirt hem

Interfacing fusible interfacing on skirt front and back facing

Special instructions seams are pressed open

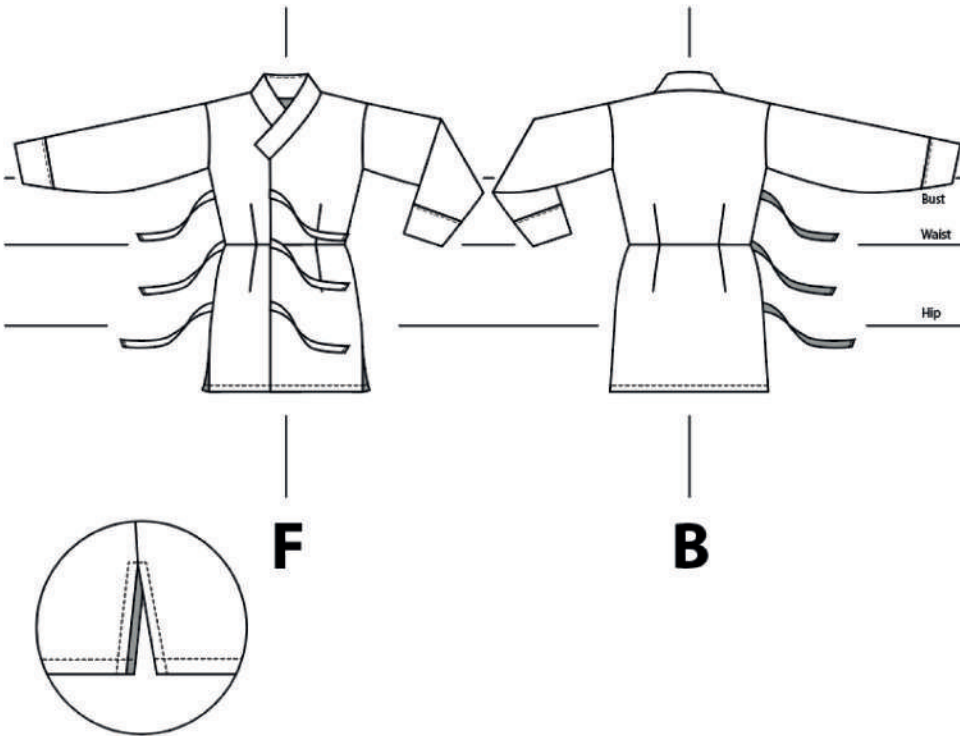
Flat-look#4

Style number : 21SS301L

Name : Youjeong Soung

Style number : 21SS401L

Name : Youjeong Soung



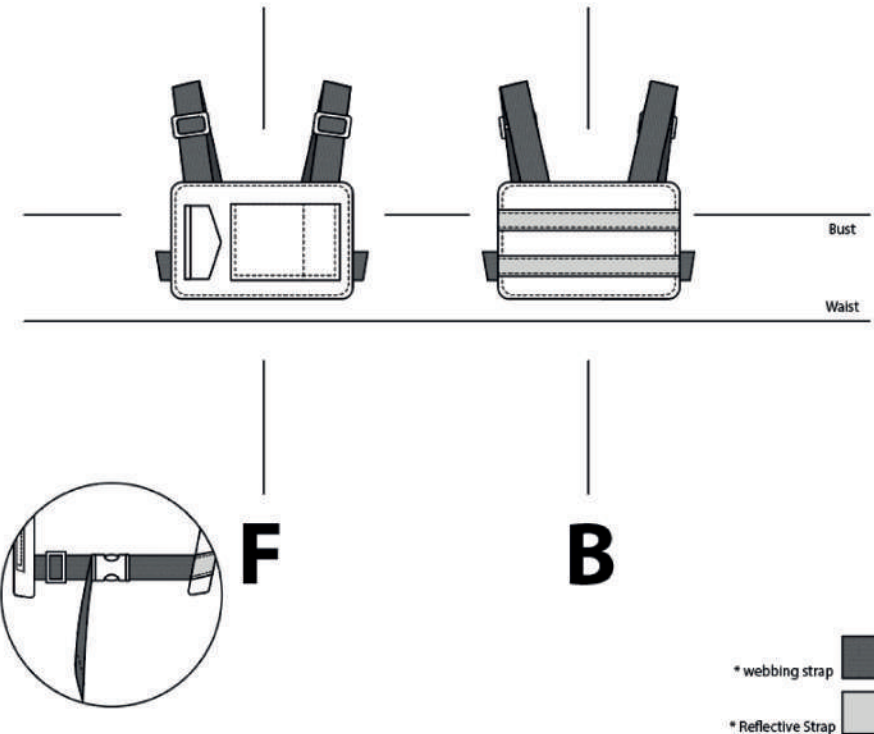
Description Ladies semi-fitted with facing, drop shoulder, korea traditional collar, sleeves with cuffs and slit on each side. two darts on each front and back.

Opening system 3 fused self-fabric straps on each front opening and on right side seam

Topstitching single needle, self-colored 0.2cm top stitch on cuffs and strap edges, 0.5cm top stitch on each slit, 1cm top stitch on hem

Interfacing fusible interfacing on collar, cuffs, facing and straps

Special instructions opening is left on right. 0.2cm under stitch on collar. arch shaped sleeve. seams are pressed open



Description Ladies vest. welt pocket with flap and patch pocket on front, two reflective straps on back, shoulder and waist webbing straps, two strap adjusters on shoulder and 1 buckle and 1 strap adjuster for each waist webbing strap

Opening system one buckle and one buckle adjuster with strap for each side

Trims 2.5cm width black webbing straps for shoulder and waist, 2 3.6cm width black plastic strap adjusters for shoulder and 1 3.6cm width black plastic strap adjuster on each waist webbing strap, 1 3.6cm buckle on each waist webbing strap

Topstitching single needle, self-colored 0.2cm top stitch on back reflective straps, 0.5cm top stitch front and back edge, patch pocket, 4cm top stitch (from left edge) on patch pocket.

Interfacing fusible interfacing on front, back, welt and flap

Special instructions 0.2cm under stitch on flap facing

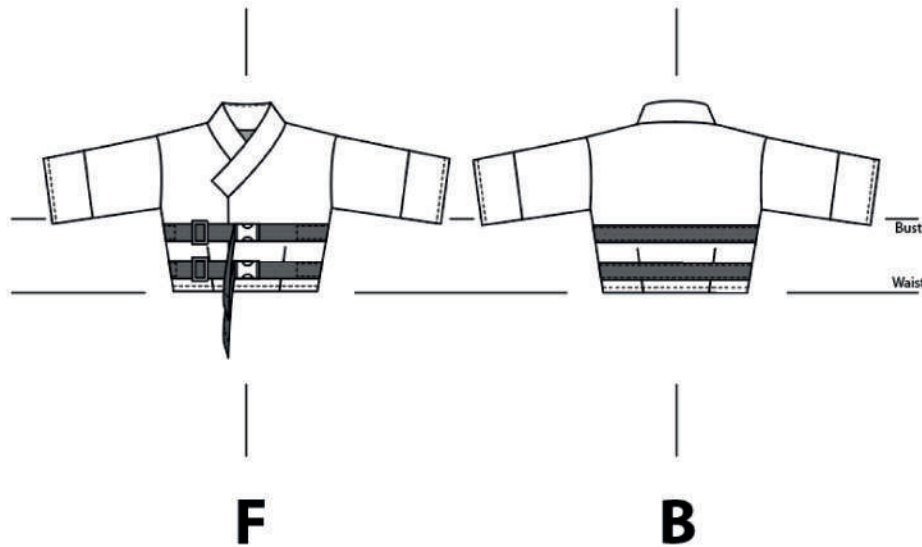


Flat-look#5

Style number : 21SS104L

Name : Youjeong Soung Style number : 21SS204L

Name : Youjeong Soung



* webbing strap



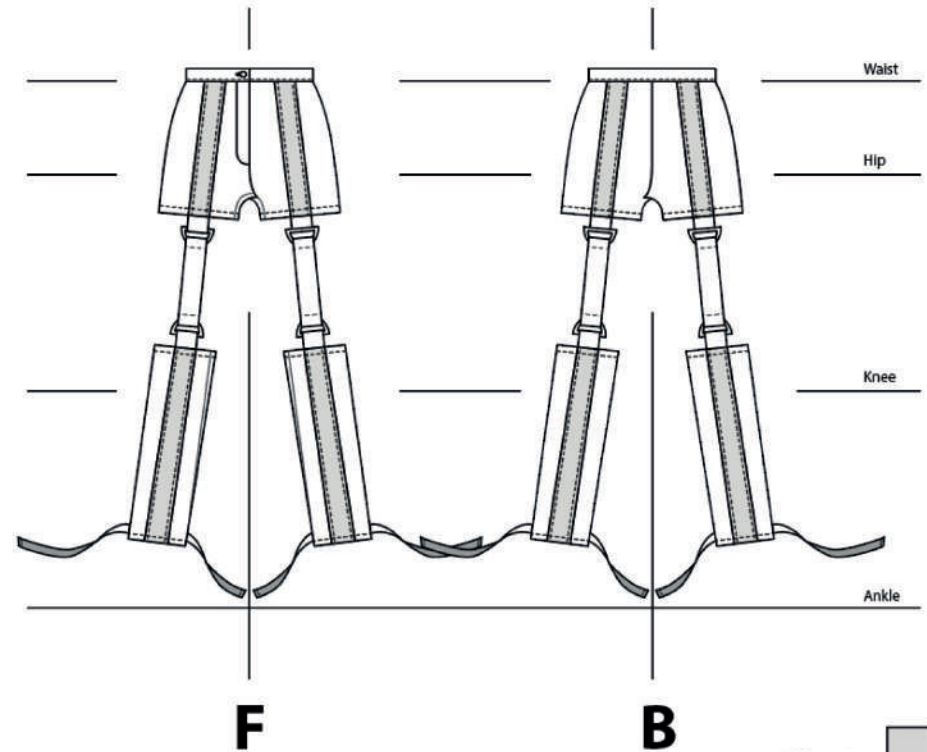
Description Ladies semi-fitted shirt with facing, drop shoulder, Korea traditional collar, medium length sleeves with cuffs, two darts on each front and back

Opening system 2 3.6cm width black plastic buckles and 2 3.6cm width black plastic strap adjusters

Topstitching single needle self-colored 0.2cm top stitch on straps. 1cm top stitch on hem, 0.5cm on cuffs

Interfacing fusible interfacing on front and back facing, cuffs and collar

Special instructions seams are pressed open. opening is left on right. 0.2cm under-stitch on under collar. seams are pressed open



* Reflective Strap



Description Ladies semi-fitted tapered fit pants. legs attached on shorts with a fly, two darts on each front and back, two reflective straps on each front and back, shorts and legs are connected with 4 D-rings and two self-fabric connecting straps and tab on each front and back

Opening system line #16 button, 4 holes, 1 plastic button DTM / 1 key button hole, machined stitches on waistband center front / 16cm nylon coil zipper, closed end, self-colored on center front

Trims 3.8cm reflective strap on front, back shorts and front, back legs. 4 gold, iron 4.5cm D-rings on each front and back

Topstitching single needle self-colored 0.2cm top stitch on reflective straps, waistband and self-fabric straps' edge on legs' hem, 1cm top stitch on shorts' hem, legs' top, bottom hem and 1.5cm top stitch on connecting straps

Interfacing fusible interfacing on front and back facing, cuffs and collar

Special instructions seams are pressed open.