



AFTER



BEFORE

GRADE 6-7 CLASSROOM

According to the principal of the school, the grade 6-7 wings of the school needs the most attention when redesigning. Although the original classroom is broad, it seems dark, and there is no space for students to relax. To make it better, a semi-private breakout space is put into the classroom corner. It allows students to have a beautiful and quiet area to take a break alone by themselves. An extra sink is provided since the art room is demolished so that they can have art activities inside their classrooms. The redesigned two classrooms of grade 6-7 are combined that separated by an acoustic folding door. When the door is opened, students can have a broader space to have activities with another class. When the door is closed, students can have individual lectures while not being distracted by the classroom on the other side of the door.



SMALL GROUP DISCUSSION AREA

LARGE GROUP DISCUSSION AREA



READING AREA

BREAKOUT AREA

A big and multi-function breakout area is added to the school in this redesign project to create a special place for the students of grade 6-7 to relax and communicate with others. There is five different seating in the space that allows the students to have various activities near their classrooms. They can chat in the booth area, discuss their assignments and projects using the big table in the center of the space, read alone on the bench along the big windows, have small group discussion using the 6 seats table in the corner, they can also be working while standing up using the standing working stations on the side of the space.

02

RESIDENTIAL





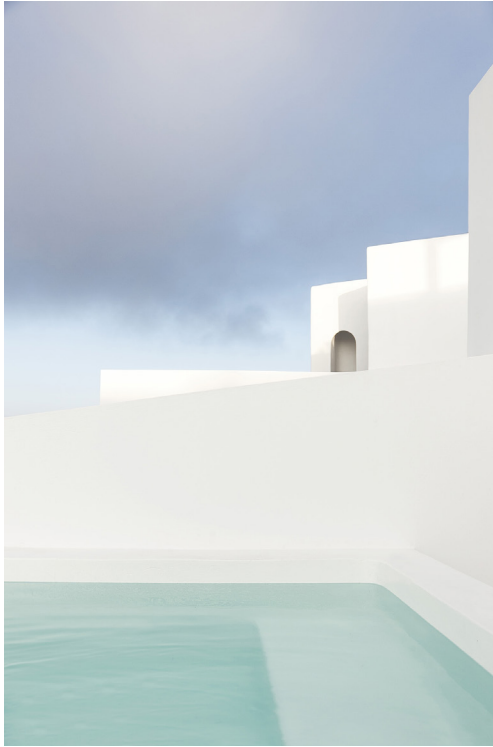
CLIENT BRIEF + DESIGN INTENT

Mr.Smith's Residence
6825 Station Hill Drive, Burnaby, B.C
4204 SQF / 391 SQM

This residential project is designed for a family of 5, a mid-age couple, their teenage daughter and 8-year old twin boys. Mr. Smith is a writer that works at home; Mrs. Smith is a lawyer who travels a lot; the teenage daughter and her younger brothers love reading and animals.

The design intent is creating a living space that suits the different requirements of each family member. A nice home office for the couple to have an acoustic private place to work on their own without any distraction. Multifunctional living and dining area for the kids to play and study freely. Also, adequate storage space is essential for a family of five. These factors are the primary intent of this design project.

CONCEPT

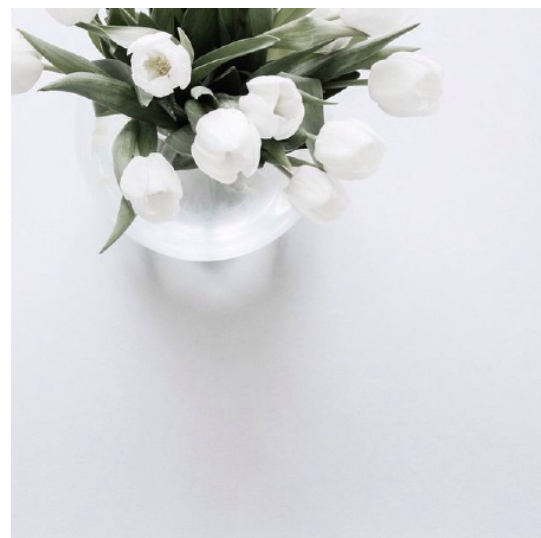


freshness.

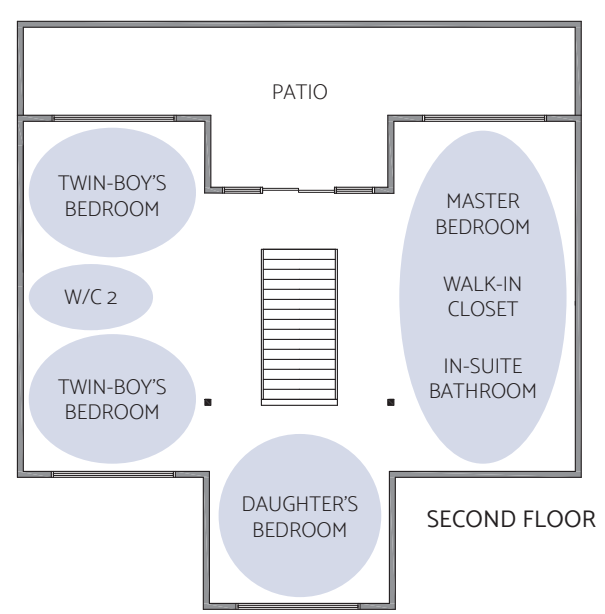
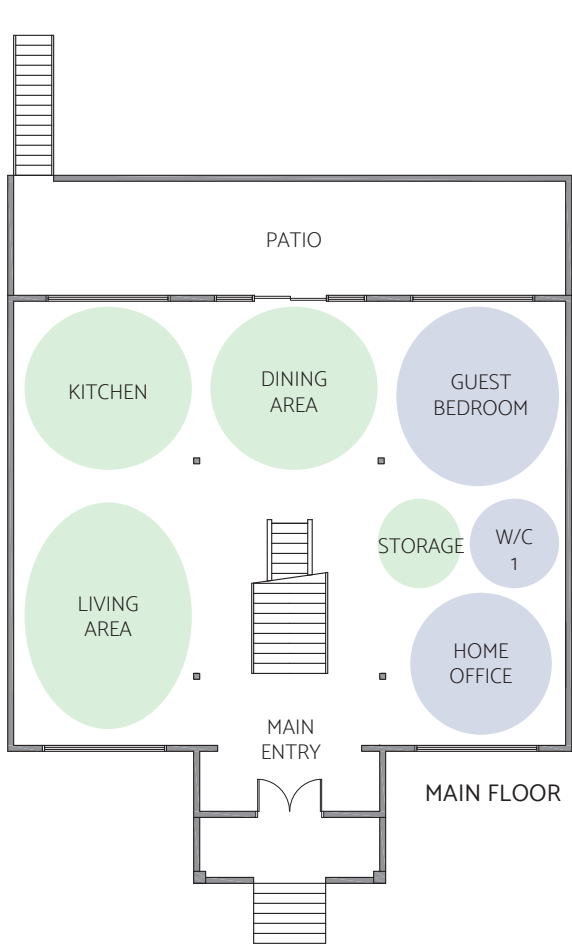
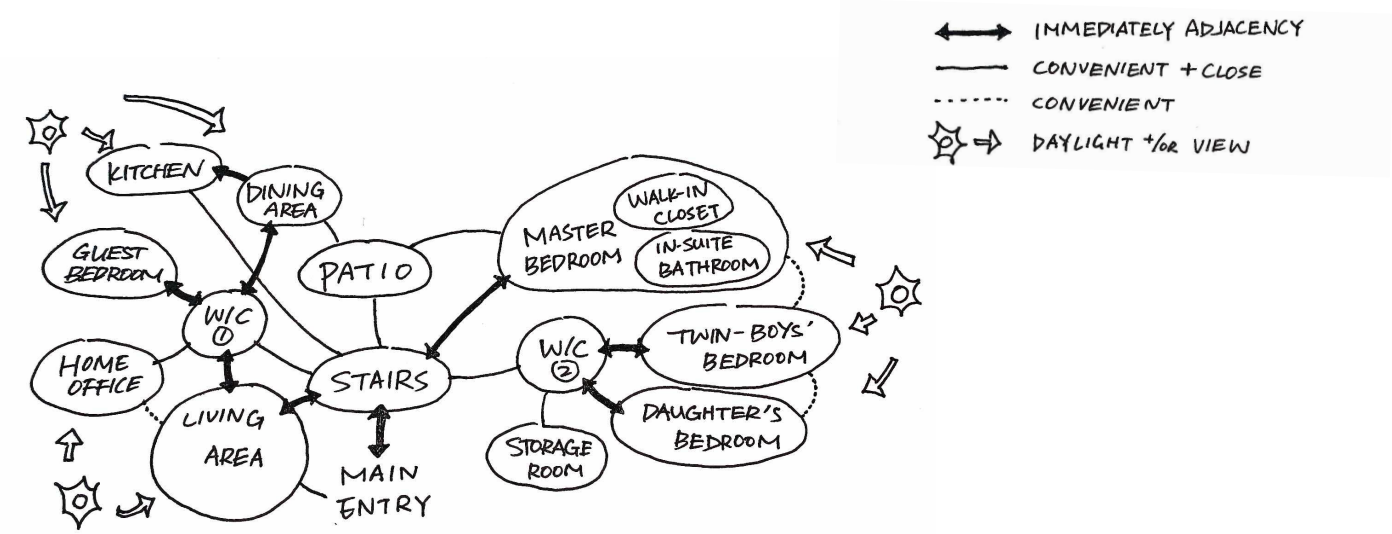
natural.

functional.

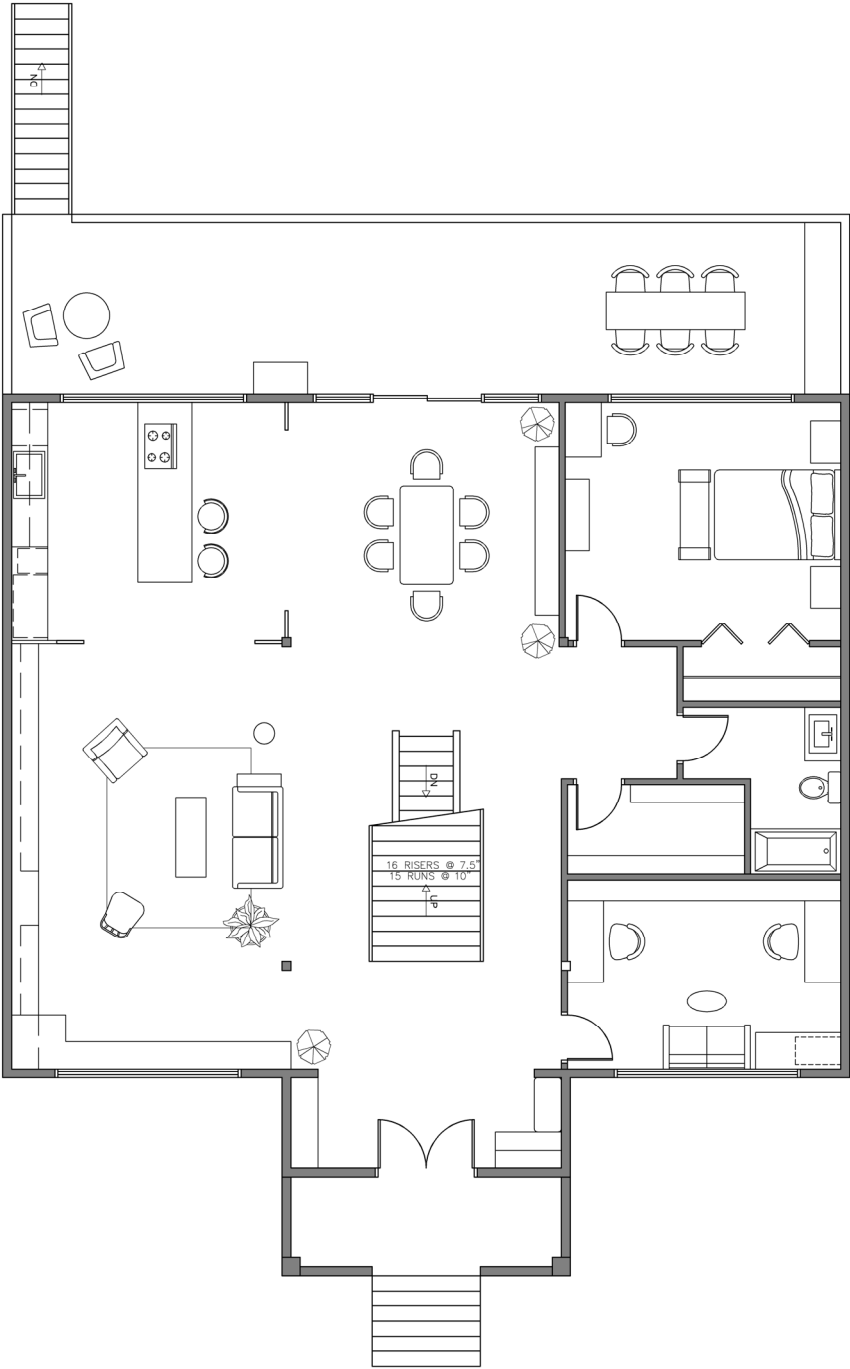
The concept of this design is freshness. The colours are neutral and muted to make this house feels bright, spacious and clean. Greens and blues as an atmosphere touch that give this place a relaxing and lively vibe. Furniture is designed with a modern and minimal style. Wooden material is used the most to make the design feels warmer.



BUBBLE DIAGRAM



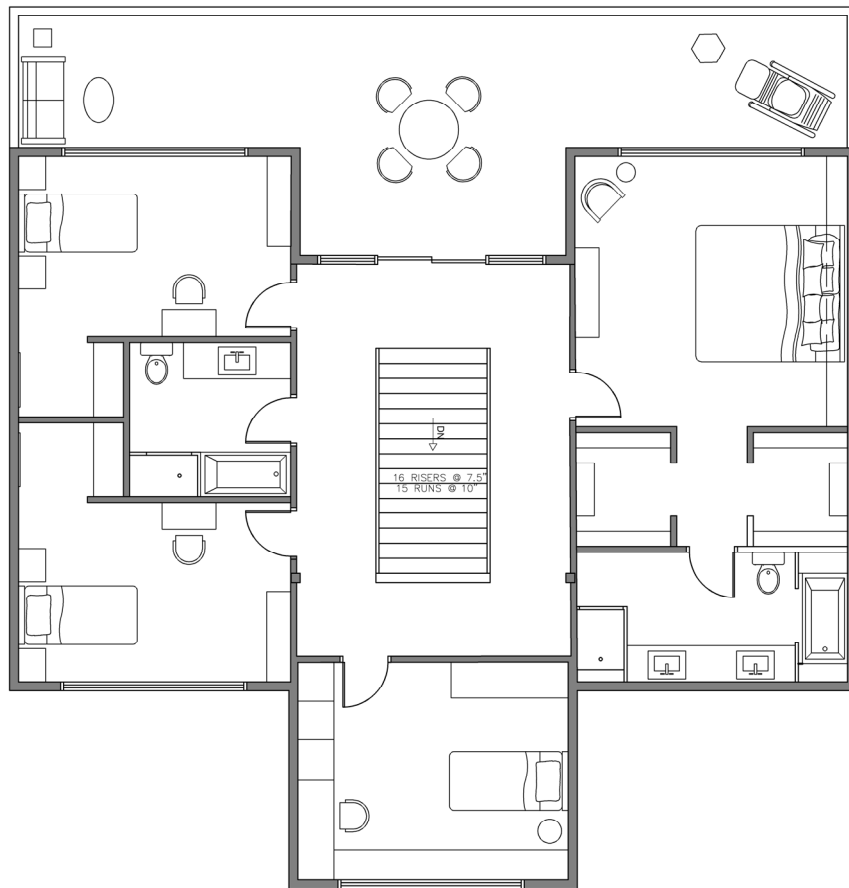
MAIN FLOOR



SECOND FLOOR



SCALE: $\frac{3}{32} = 1'-0''$





In the south-west corner of the living area, there is a nice little reading space with soft wall cushion. It is right beside the main entrance of the house. When the client arrives home from work or school, they can simply drop their belongings on the bench under the window, then relax or read at this reading corner. It is a functional space specially designed for this family that loves reading.

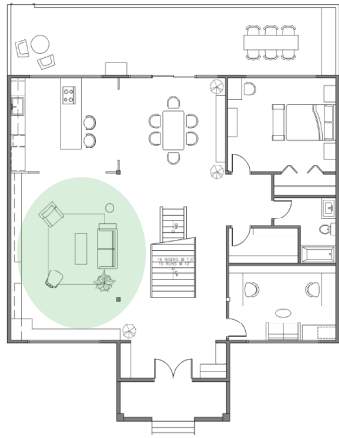
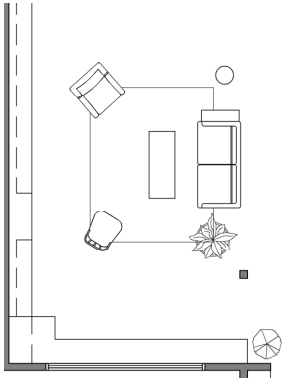
Television is usually the center of the living area with seatings and coffee table surround it. It is the traditional arrangement of furniture. As the development of technology, television had less necessity in people's daily life. Instead of that, this design adopted another arrangement for the living area.

The intent of the living area design is to give the client space for quality family time. Since it is a family of five, communication is essential in their family life. This broad living area is focusing on the experience of bonding and communication.

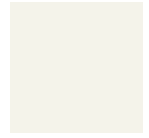
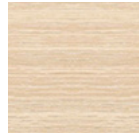
To achieve that, the television spot is replaced by large shelves that could be used to display and place books or the accessories. In front of that is a group of seatings includes a large sofa, a soft armchair and a single wire chair with a designed coffee table at the center. It allows the family members to have conversations, relax or serve the guests.

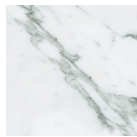
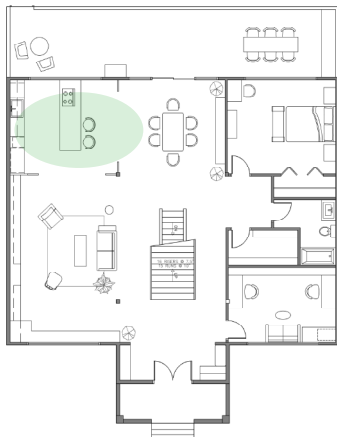
The colour choice is neutral and muted to make the space looks broad and relaxing. Green plants add a touch of nature into the space as well.





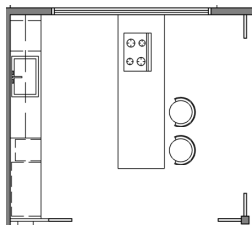
LIVING AREA







KITCHEN



On the other side of the living area, there is the kitchen. The cabinets are designed in modern and minimal style with simple lines. The refrigerator and the two ovens are combined with the cabinet to have a clean look and the consistency to the millwork. The cooktop is at the kitchen island, with a modern exhaust hood on the top. The window gives adequate natural light into the kitchen. The materials are mainly light-coloured wood and marble. The primary color for the kitchen is different shades of gray, light wood color and white. The high pigmented blue bar stool act as a focal point while being a contrast to the light muted color of the kitchen.



MASTER BEDROOM

