



VISUAL PRESENTATION

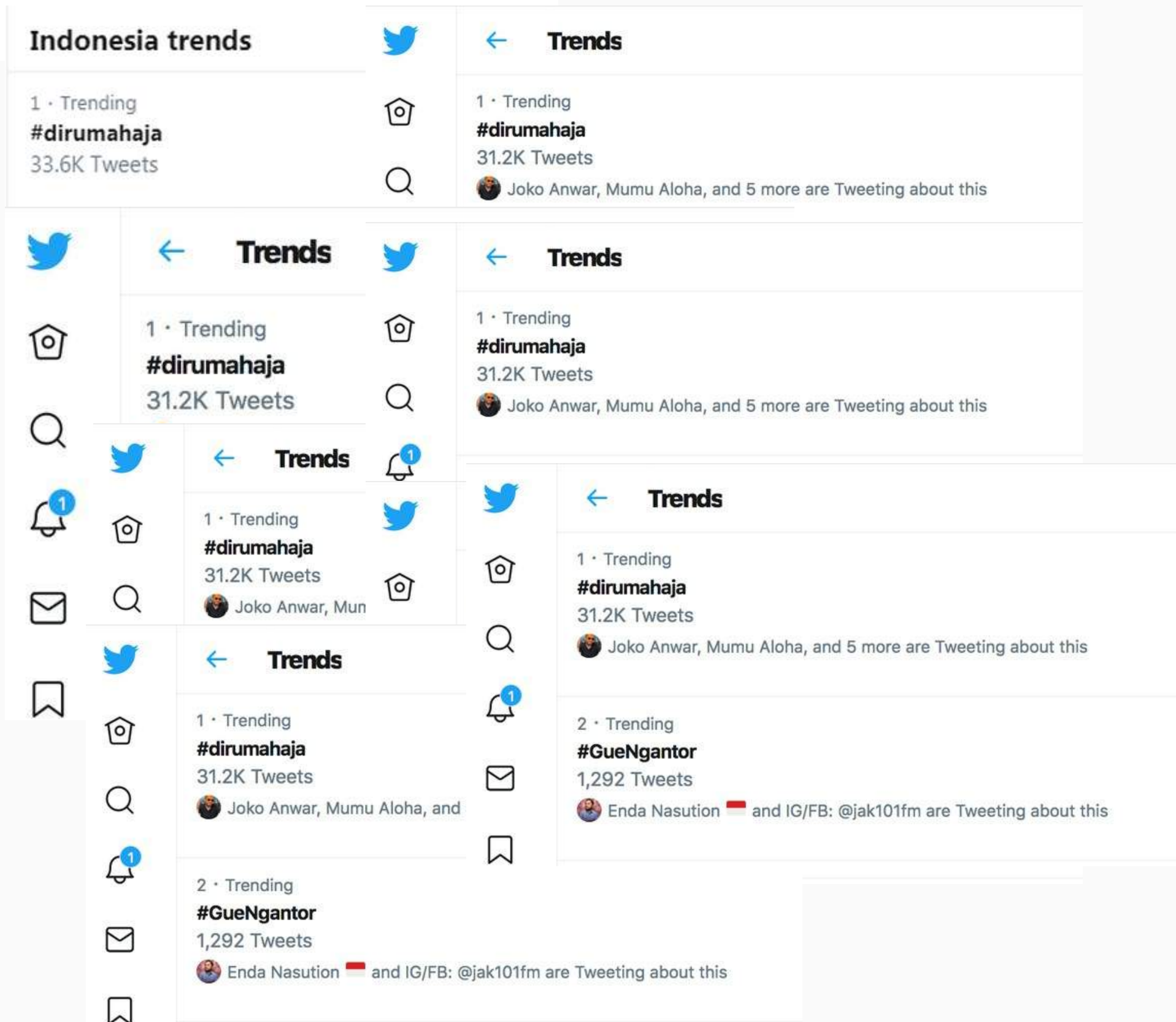
CHAOTIC ART

Clarisa M
Catherina B
Karyn M
Michael S



QUARANTINE TRASH





#DIRUMAHAJA



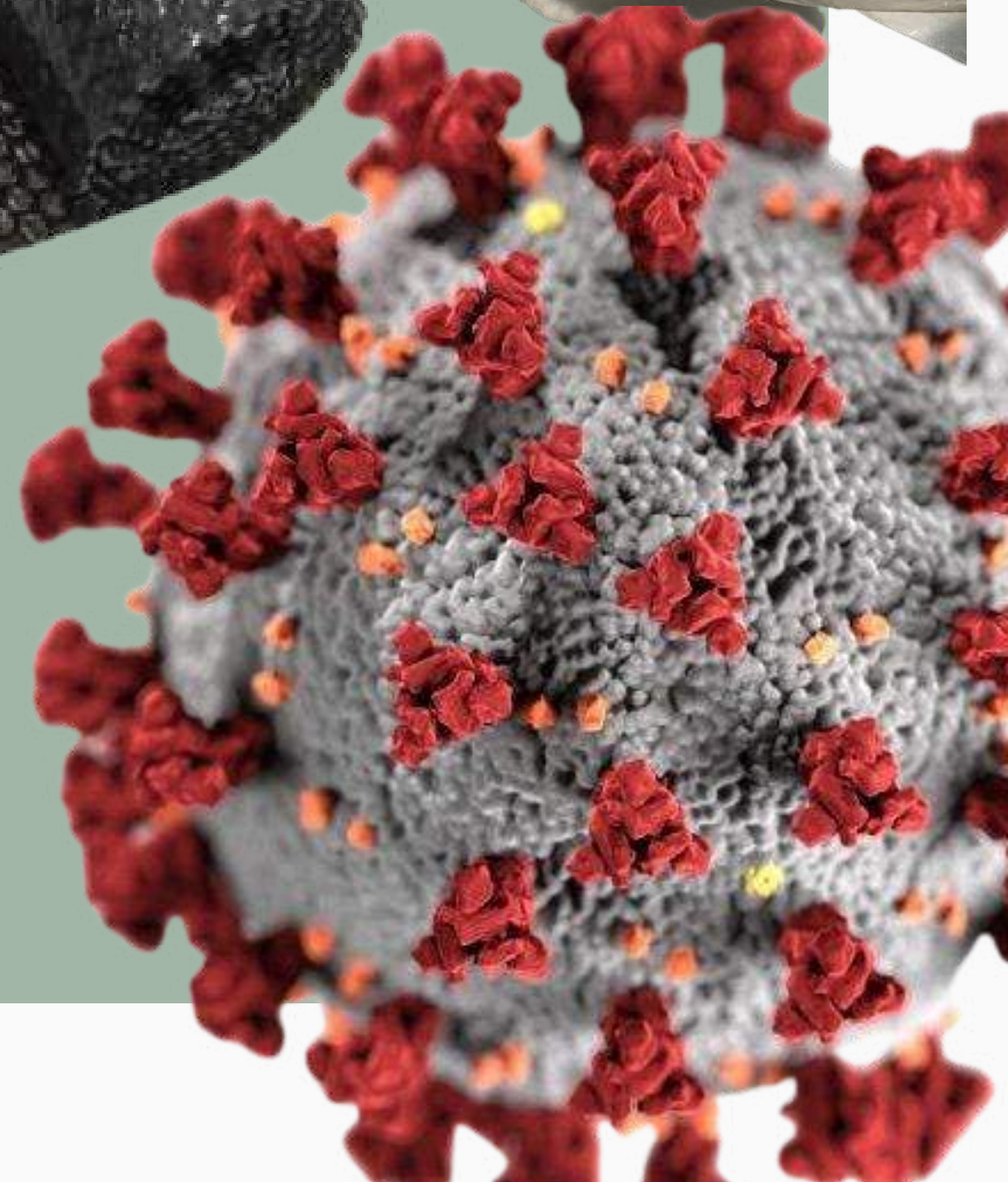
Quarantine Inspired

Bubble wrap

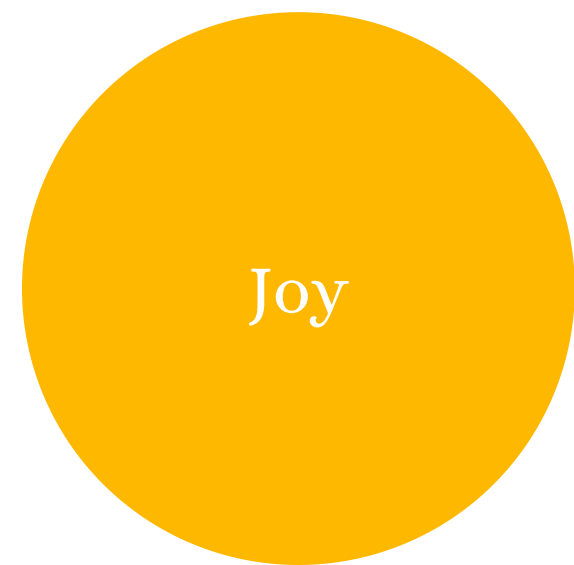
Medical mask



Food Packaging







COLOR AND TEXTURE

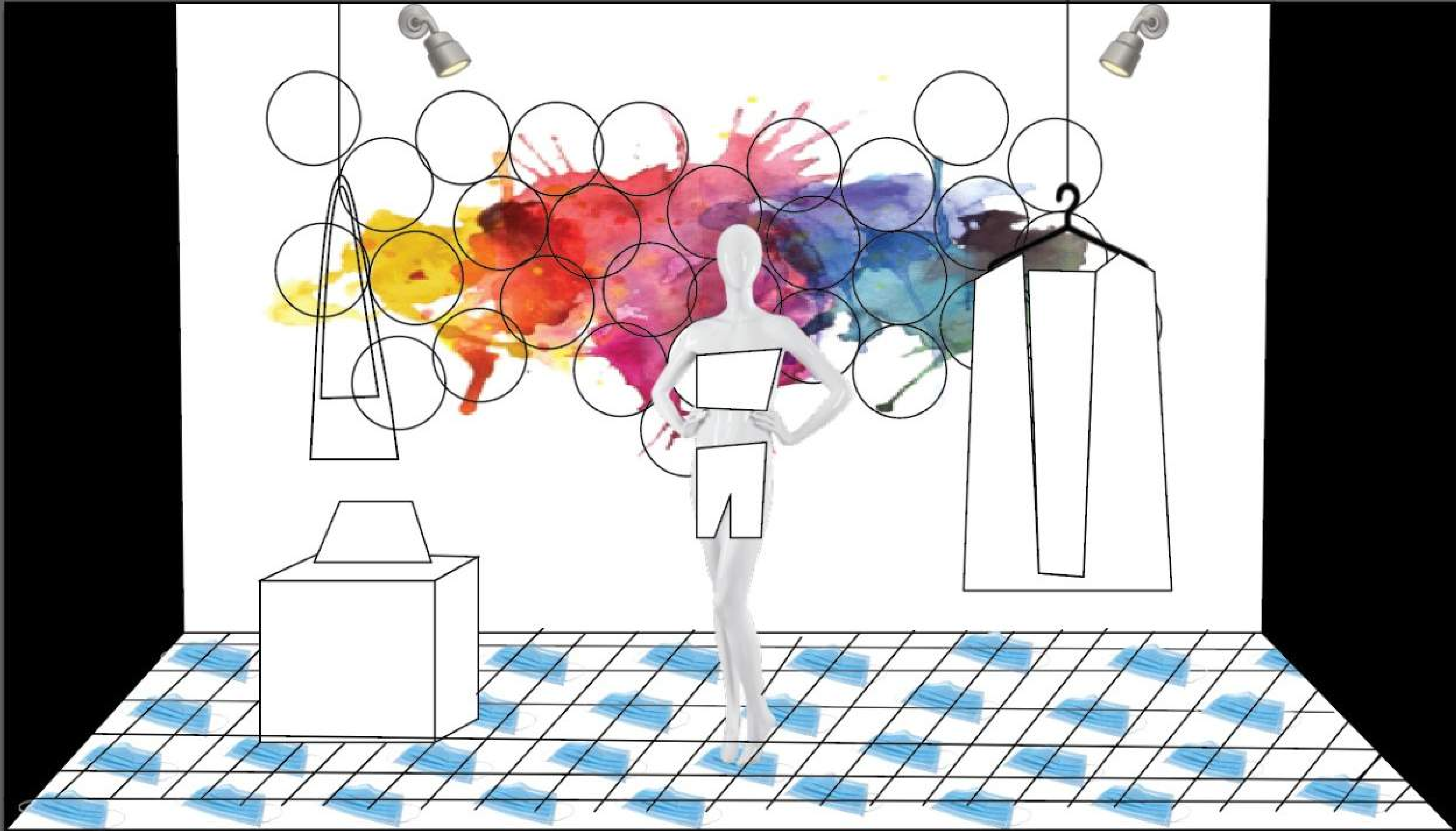
PRODUCTS





- Inspired from Hellen Frankenthaler, an American abstract painter.
- In common usage and in philosophy, ideas are abstract concepts.
- New technologies and innovations has been developed in today's era.
- Ex : social media platform has been a platform to express creativity and thoughts
- People are being more transparent and brave to be themselves
- Oblivion about what's going on in today's period of time.



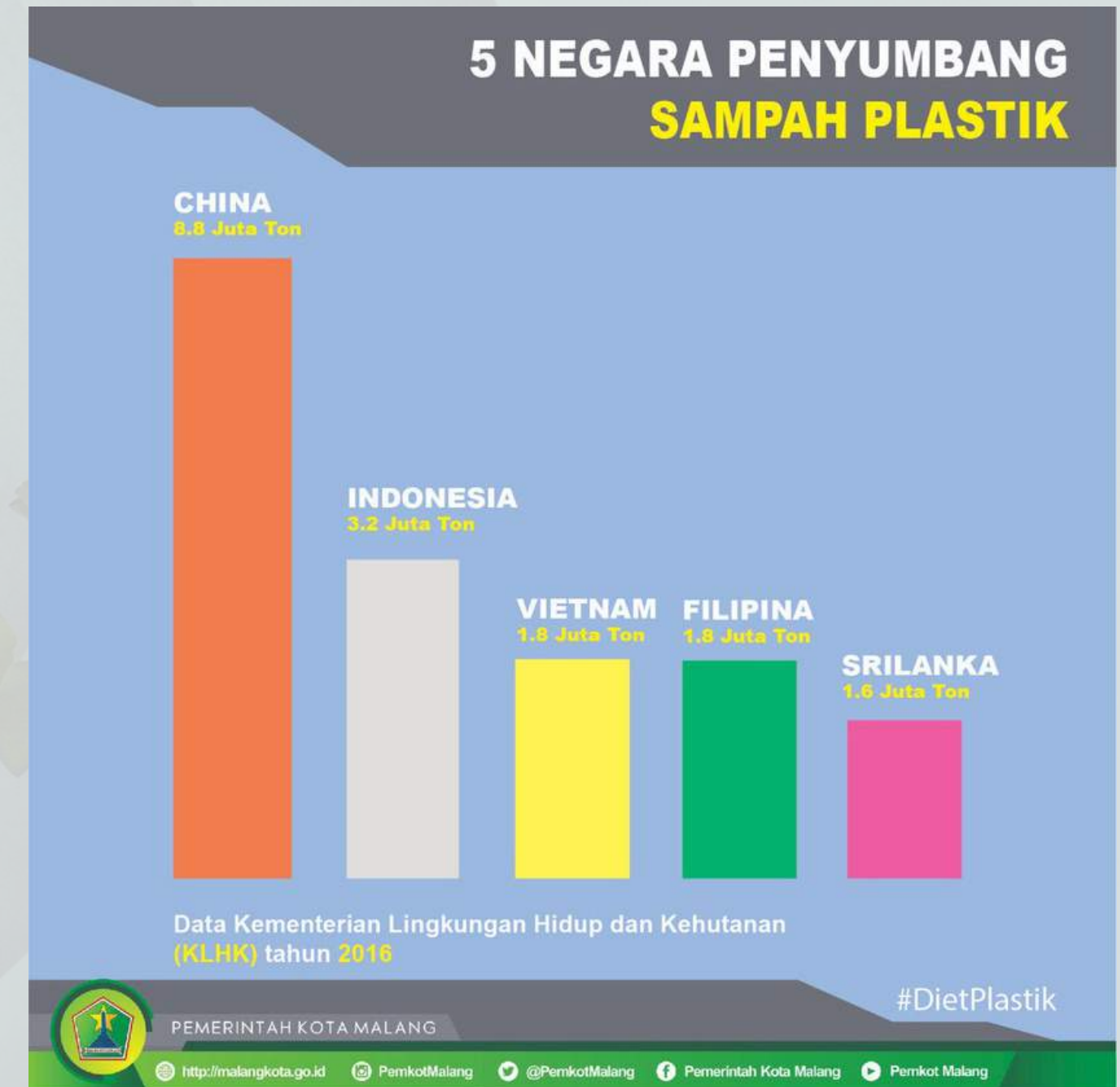


How Covid-19 Impacts to waste

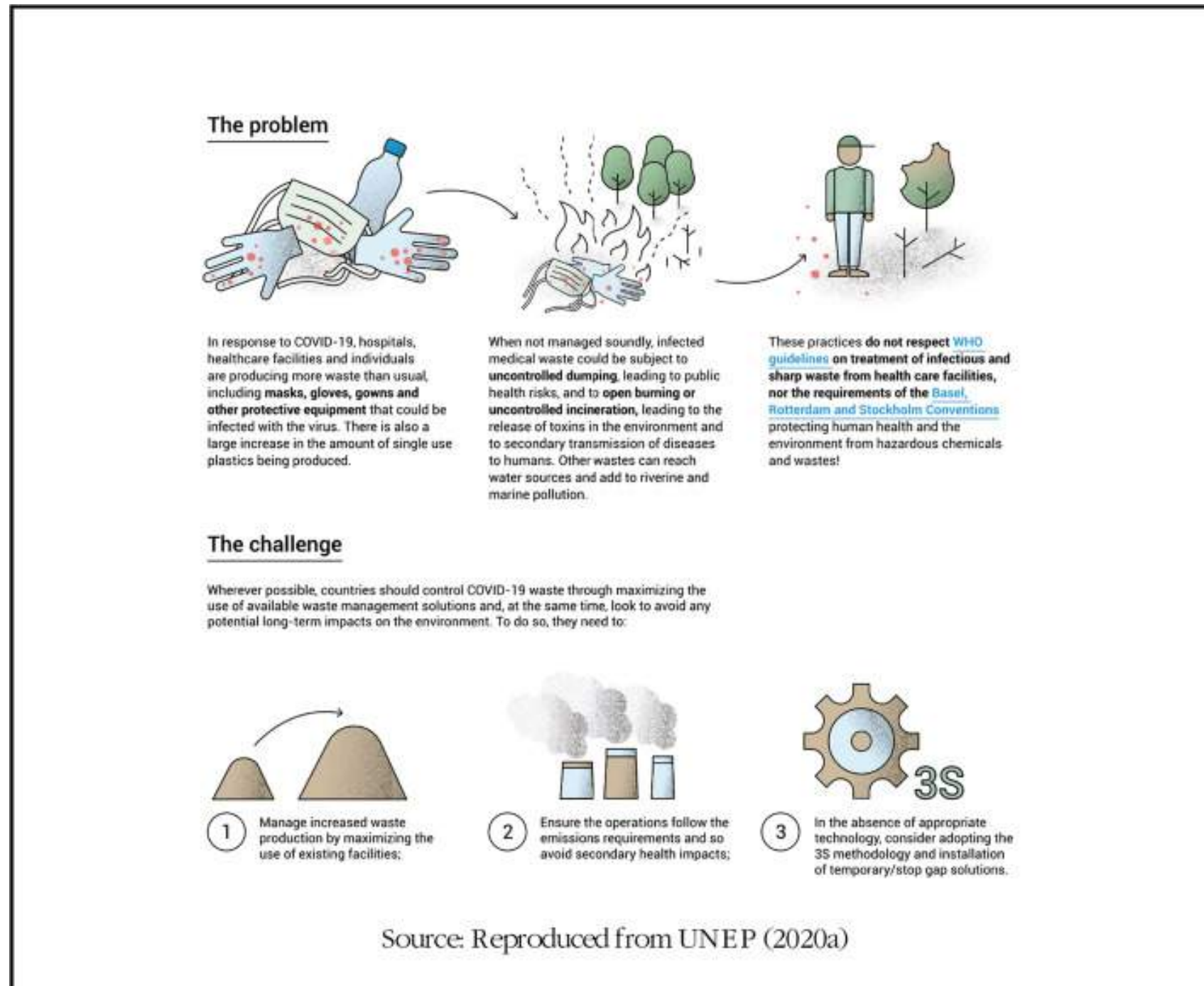
The amount of plastic wastes generated worldwide since the outbreak is estimated at 1.6 million tonnes/day. We estimate that approximately 3.4 billion single-use facemasks/face shields are discarded daily as a result of COVID-19 pandemic, globally.

The containment of the spread of COVID-19 pandemic and limitations on commercial activities, mobility and manufacturing sector have significantly affected waste management. Waste management is critical to human development and health outcomes, especially during the COVID-19 pandemic. The invaluable service provided by the waste management sector ensures that the unusual helps of waste that poses health risks and escalate the spread of COVID-19 is avoided.

The unanticipated occurrence of a pandemic of this scale has resulted in unmanageable levels of biomedical plastic wastes.



IMPACT OF COVID-19 PANDEMIC ON WASTE MANAGEMENT



Failure to properly manage the waste generated from health facilities and households may escalate the spread of COVID-19 via secondary transmission. The potential rampant dumping, open burning and incineration could affect air quality and health outcomes due to the exposure to toxins (WHO 2020). Thus, there is a challenge of managing waste .

Final Display

Front view



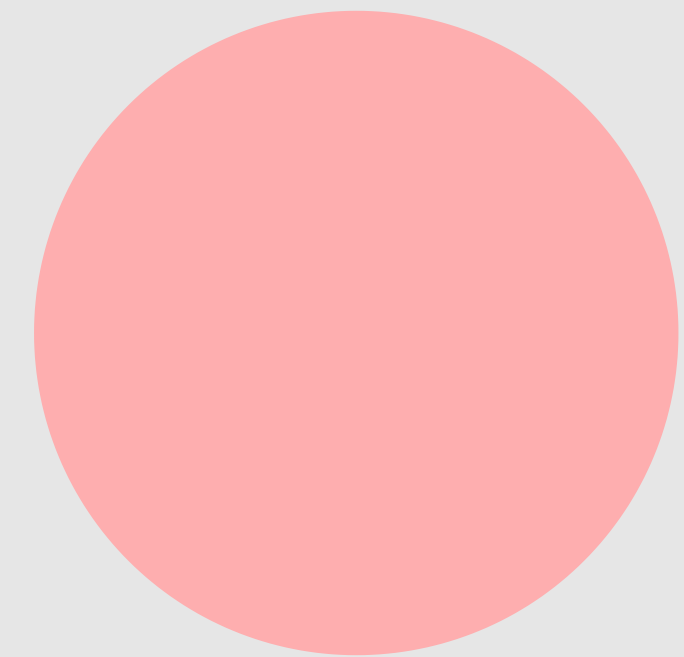


Left view

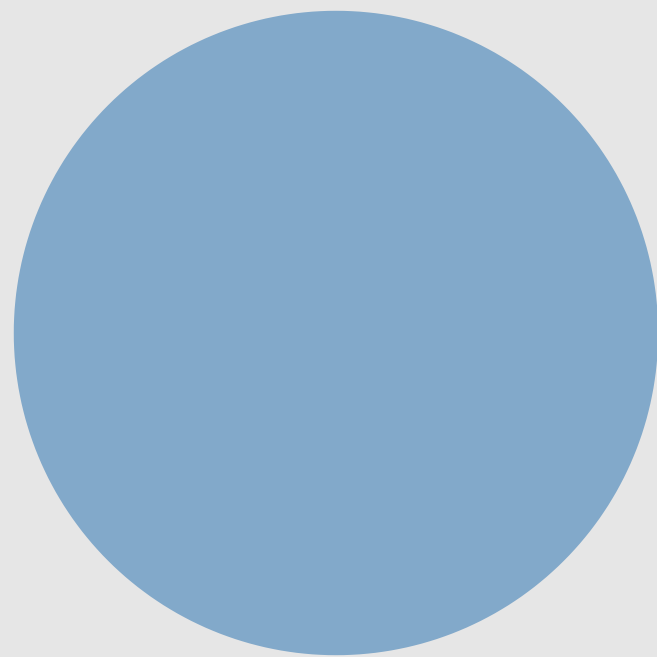


Right view

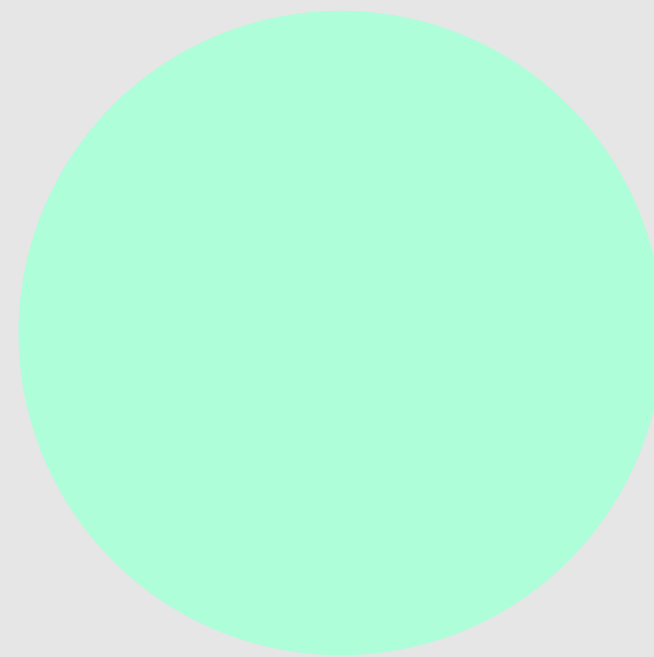
Color Pallete



Rose



Steel Blue



Mint



Lemon



White

ANALYSE OF WINDOW DISPLAY



Close Window

The type of this display is closed window as the inside of the store is covered by the white wall of the display. The wall that features colorful watercolors acts as a background for the display. The sides of the display are also completed with the same white wall.

ANALYSE OF WINDOW DISPLAY



Symmetrical *WINDOW DISPLAY*

The display on the left is considered as a symmetrical display, as symmetrical means that when the products or display are being divided into two both sides will have equal elements and at the same time both sides will be similar.

Space Management



