

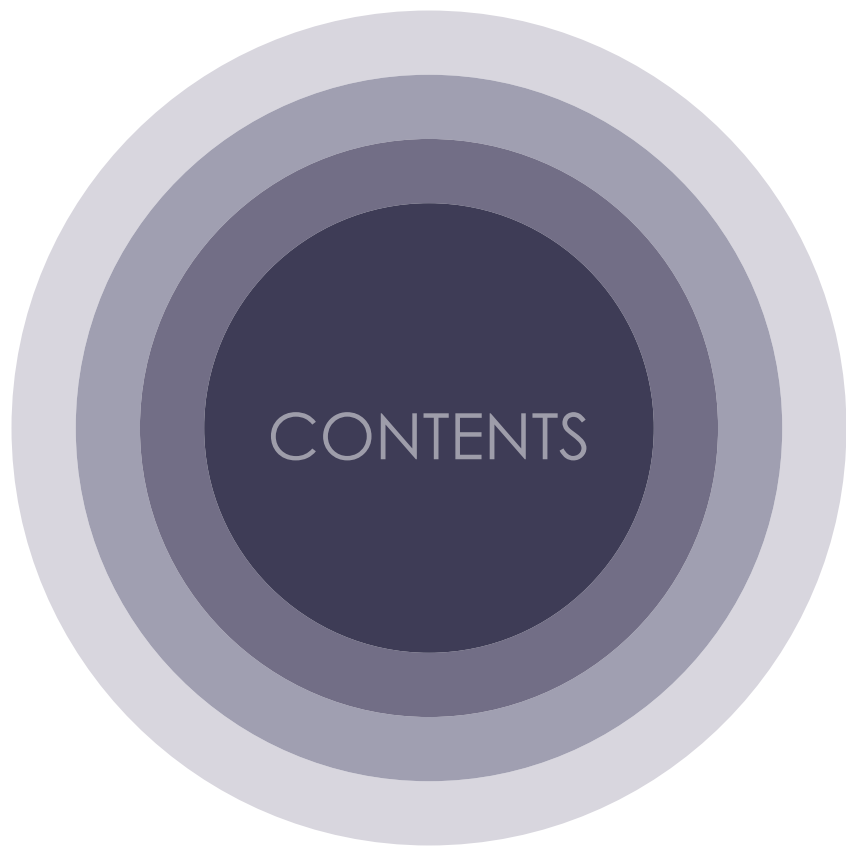




VARUN SAITEJA

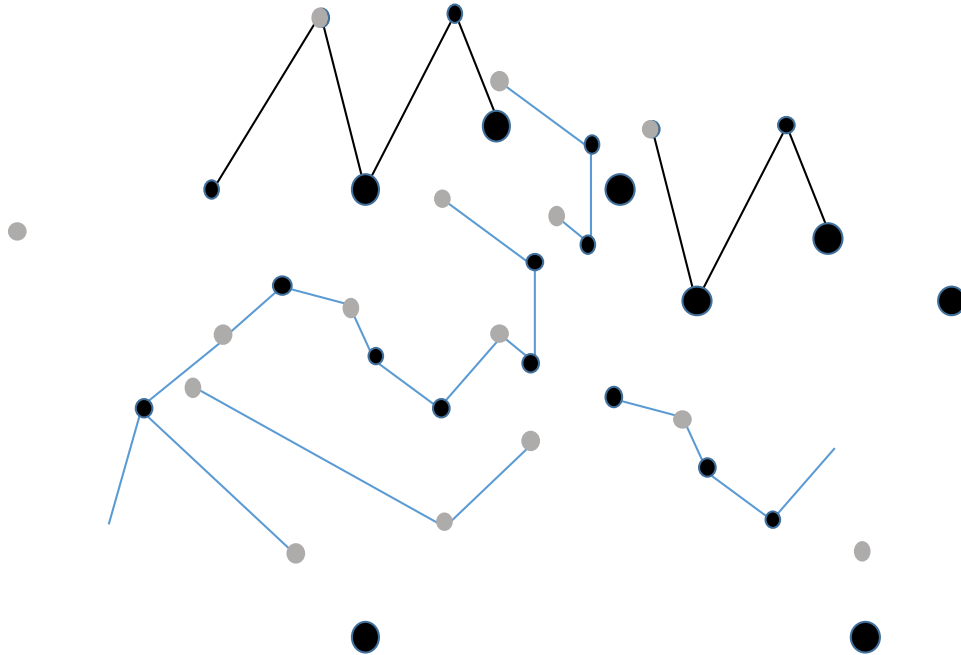
1 778 957 3090
varunsait@gmail.com

My mission is to positively influence the lives of all clients with whom we have the pleasure of working, and leave a lasting impression on their minds and imagination. My designs must inspire and elevate the hearts and minds of all those who lay eyes on it. My long-term goals are always in line with the core values. To always go one step further – to offer an exclusive service to our clients.



CONTENTS

SENIOR DESIGN	01
CORPORATE DESIGN	13
COMMERCIAL DESIGN	23
RESIDENTIAL DESIGN	35



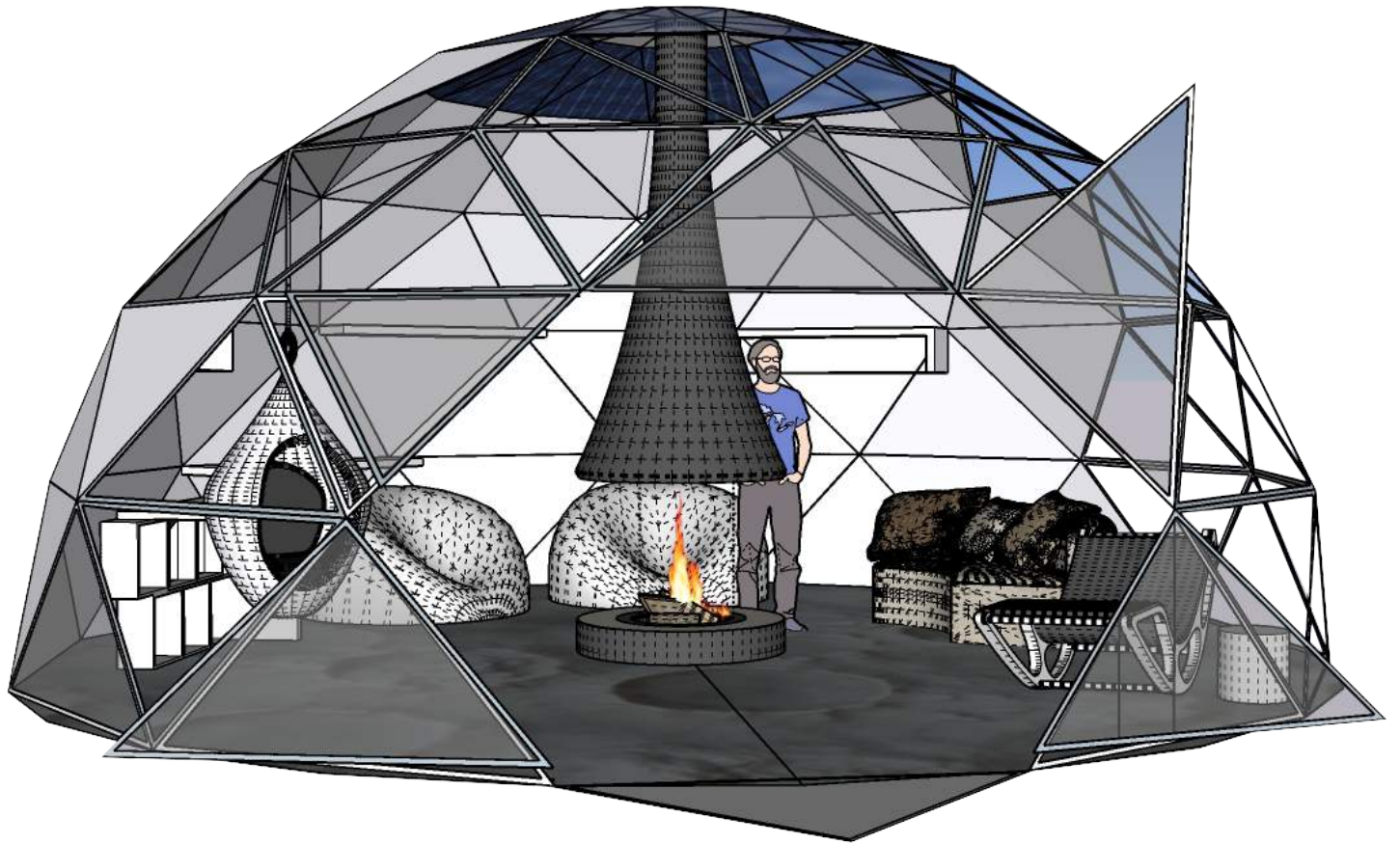
SENIOR DESIGN

Study Huts

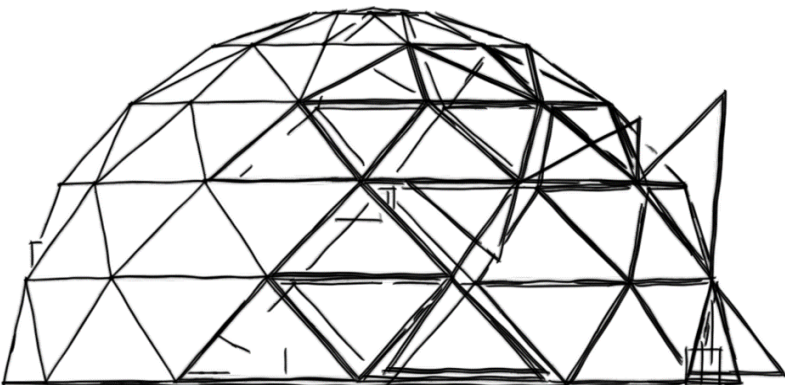
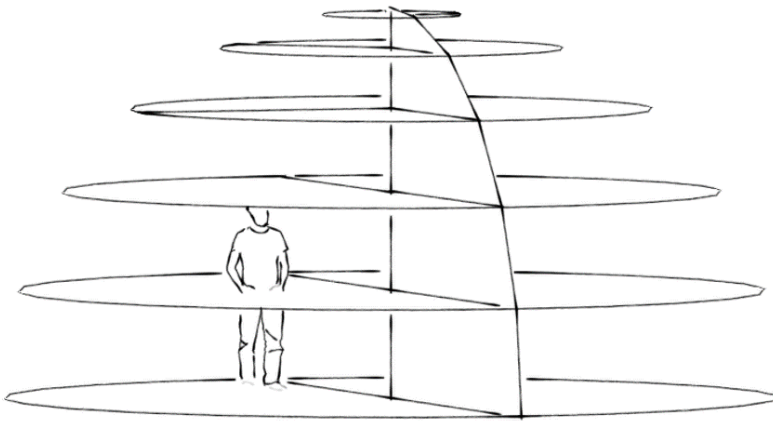
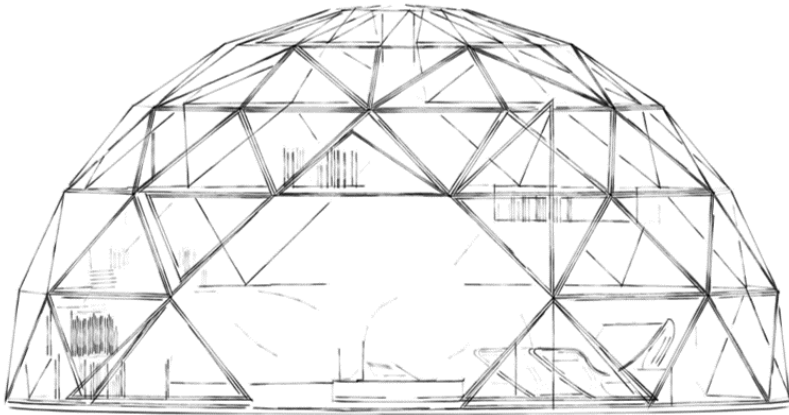
CONCEPT

This design is inspired by Buckminster Fuller's design, Biosphere Environmental Museum, Montreal.

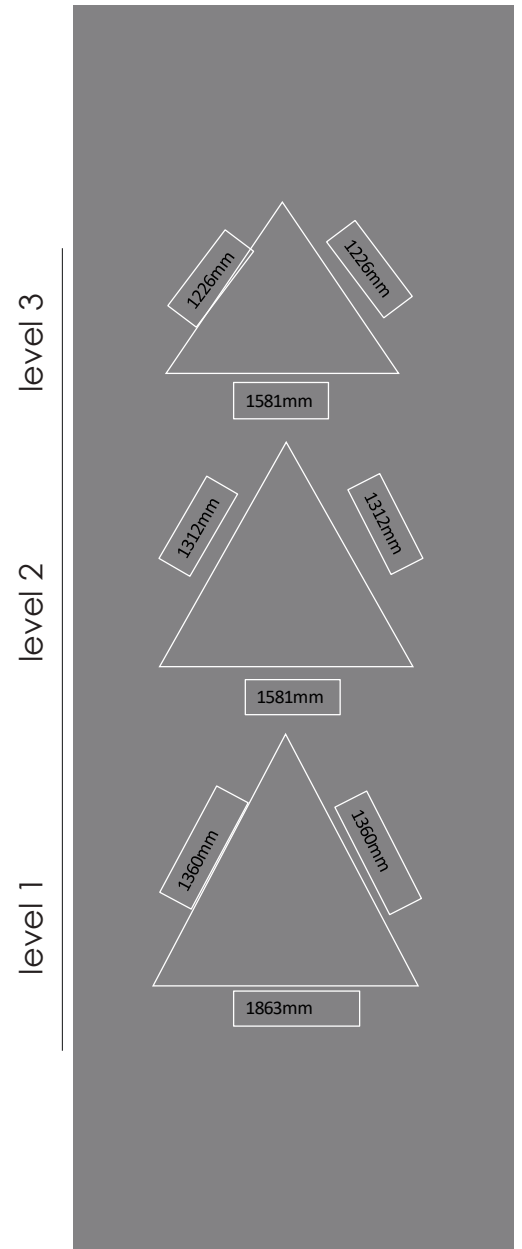
The concept of bringing geodesic dome and space theme together is inspired from one of many childhood dreams – to travel space, be as close as possible to the stars. The main idea is to observe the silence to boost up concentration while reading. The connections for constellations relates to the connections of triangles in a geodesic dome. A perfect reading spaceship.



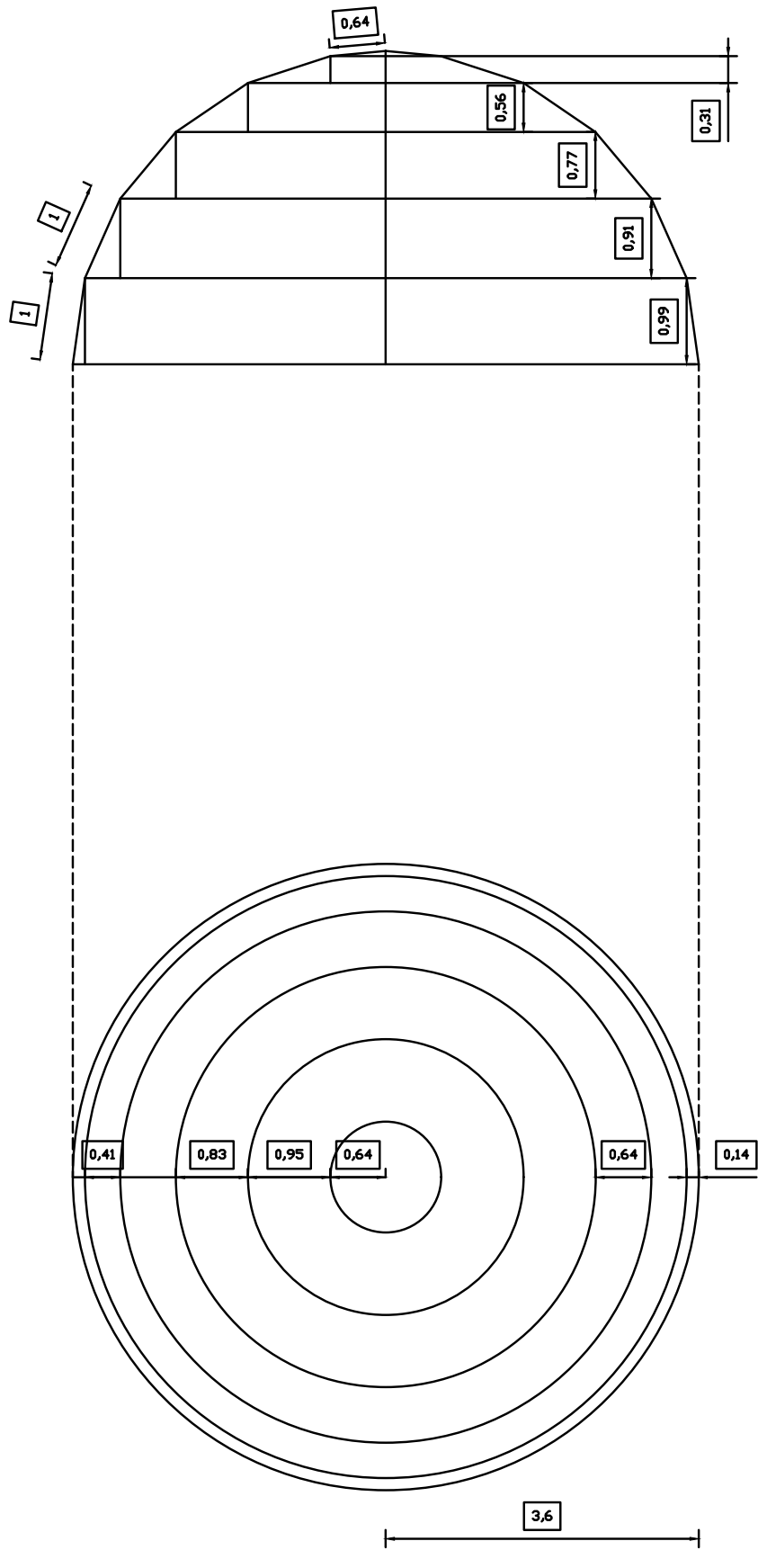
STUDY ROOM



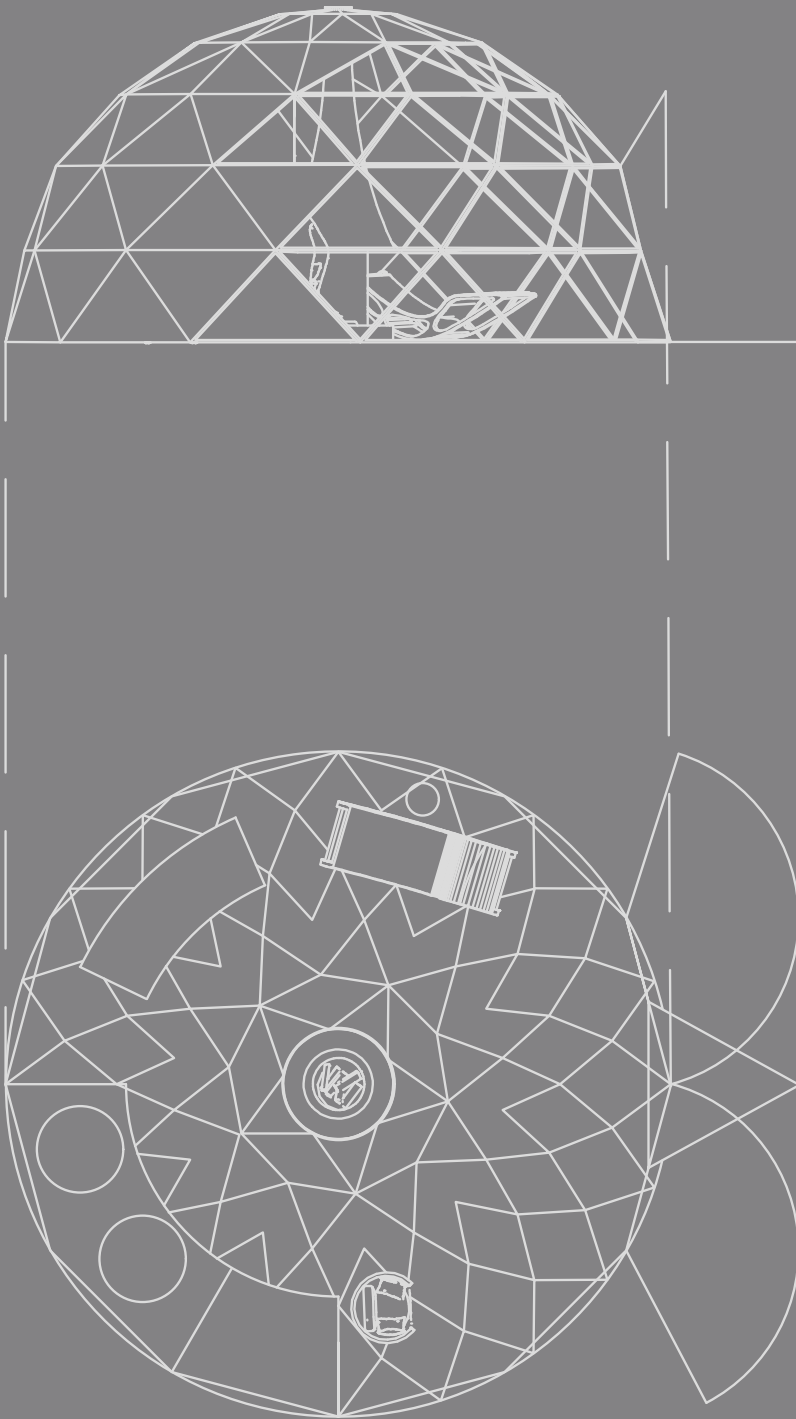
SCHMATIC DIAGRAMS



CONSTRUCTION STEPS

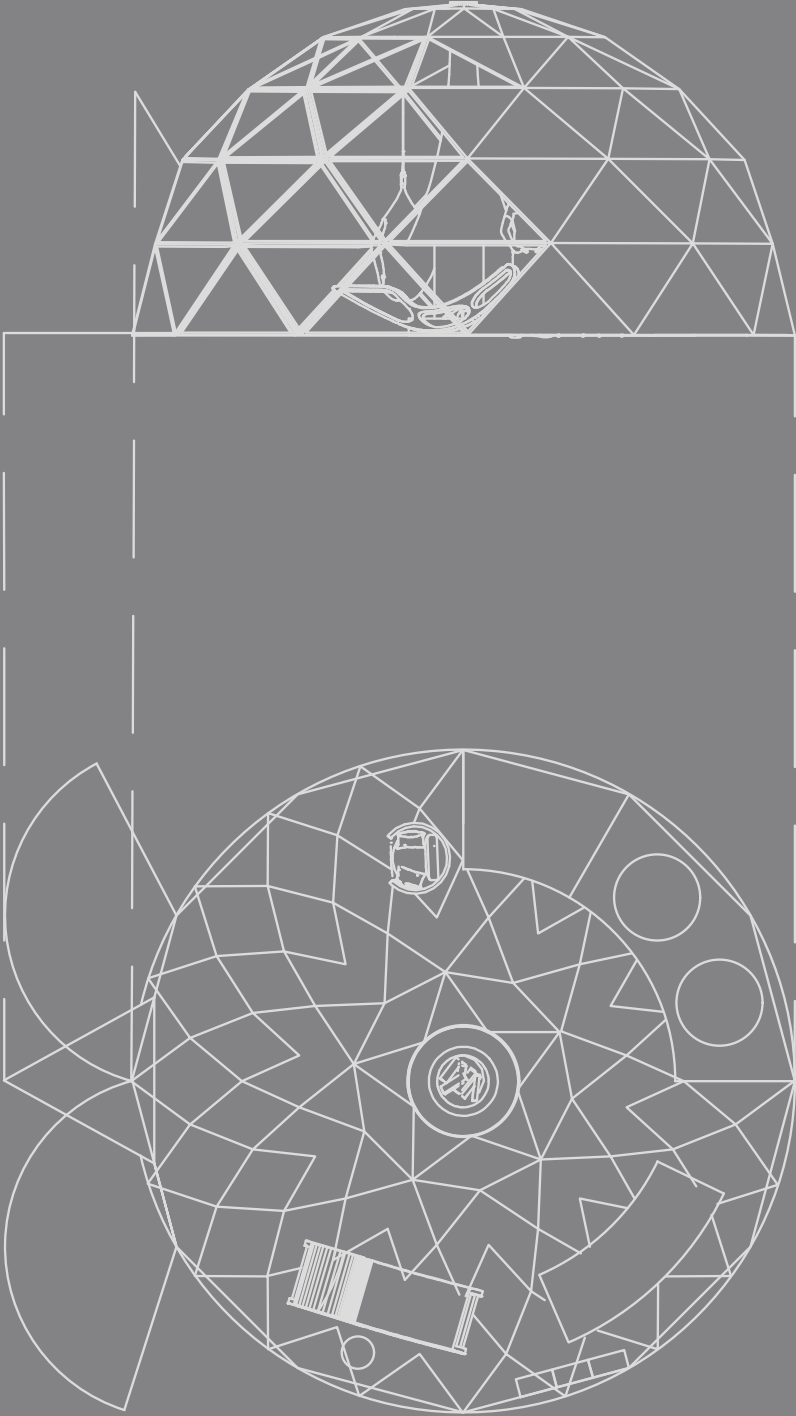


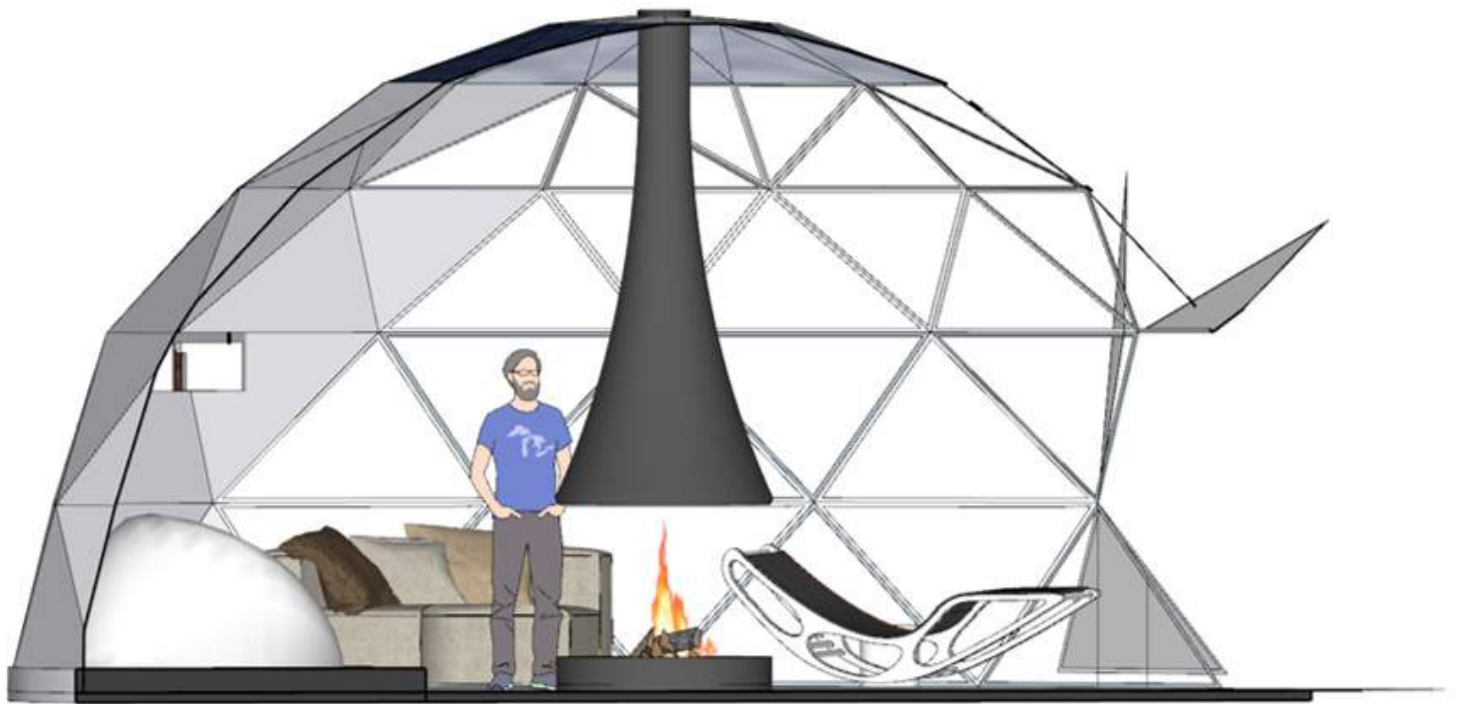
DESIGN



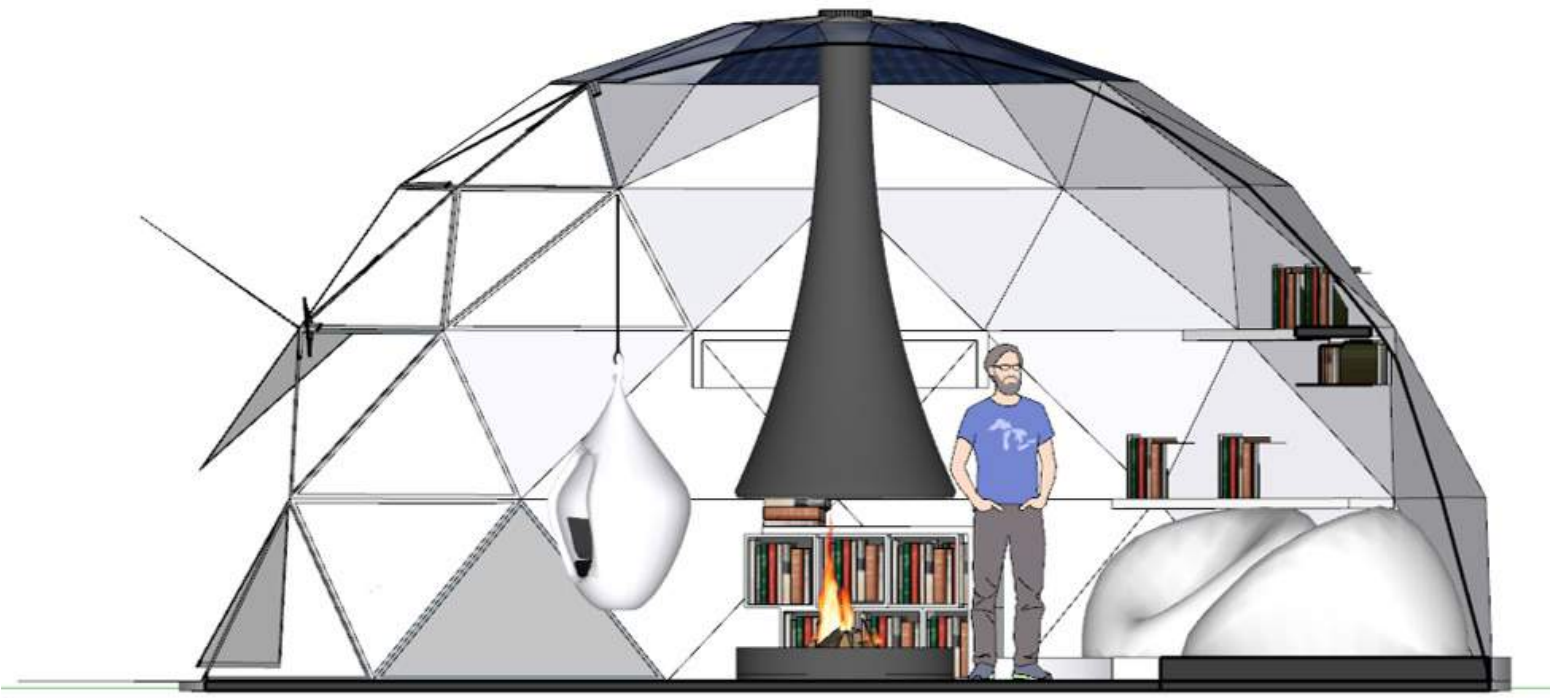
EAST ELEVATION

WEST ELEVATION

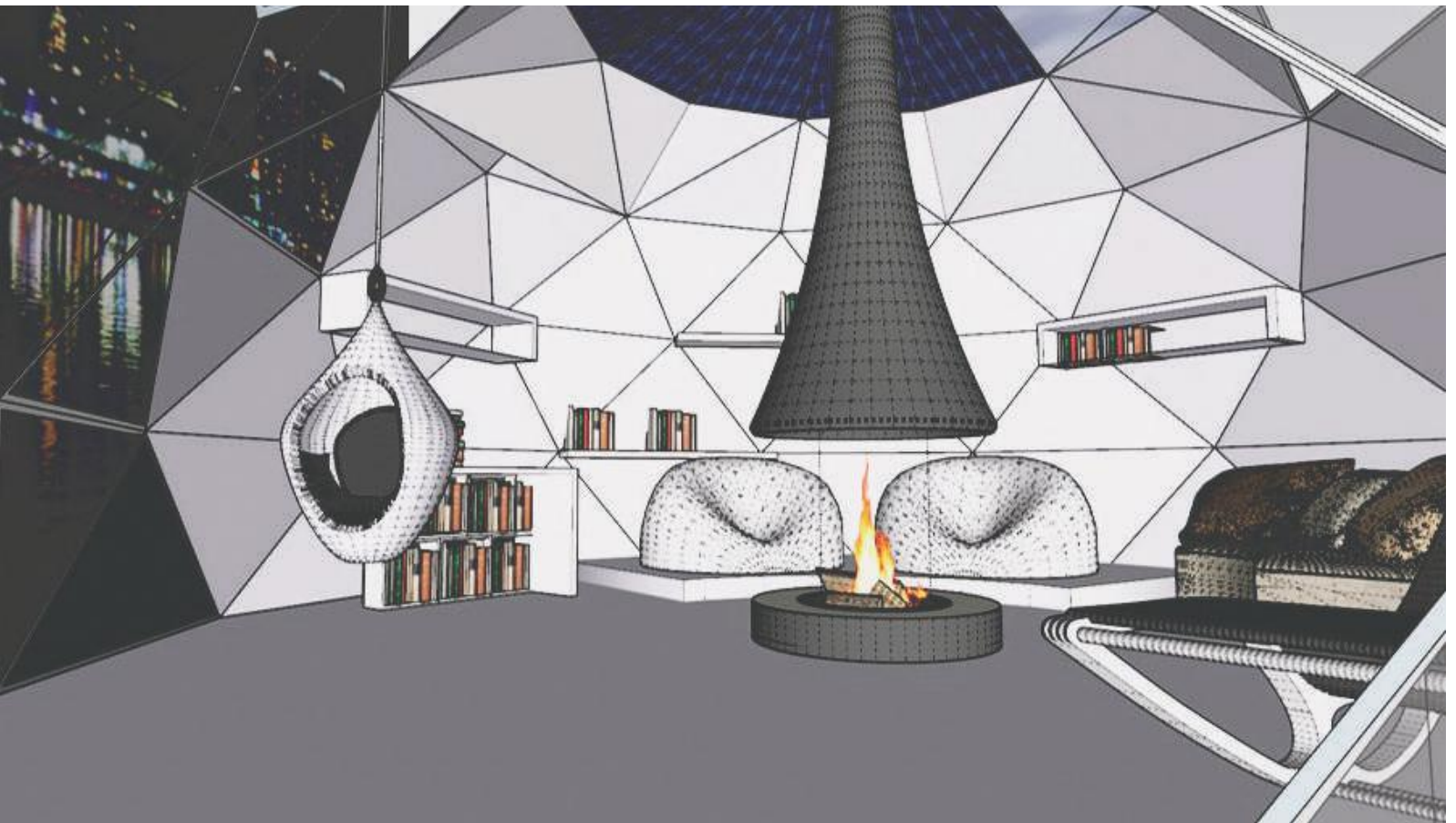




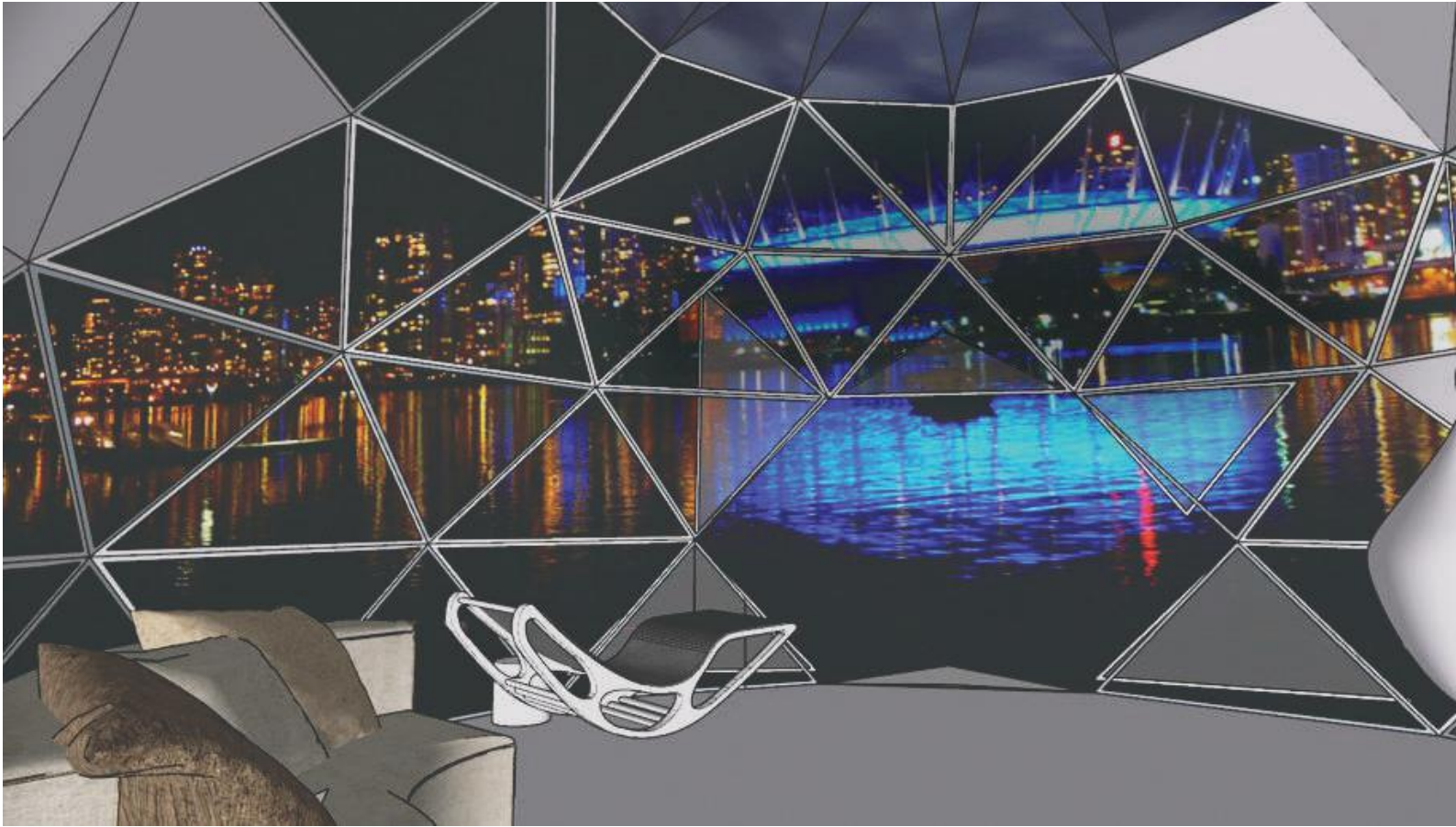
SECTION 2



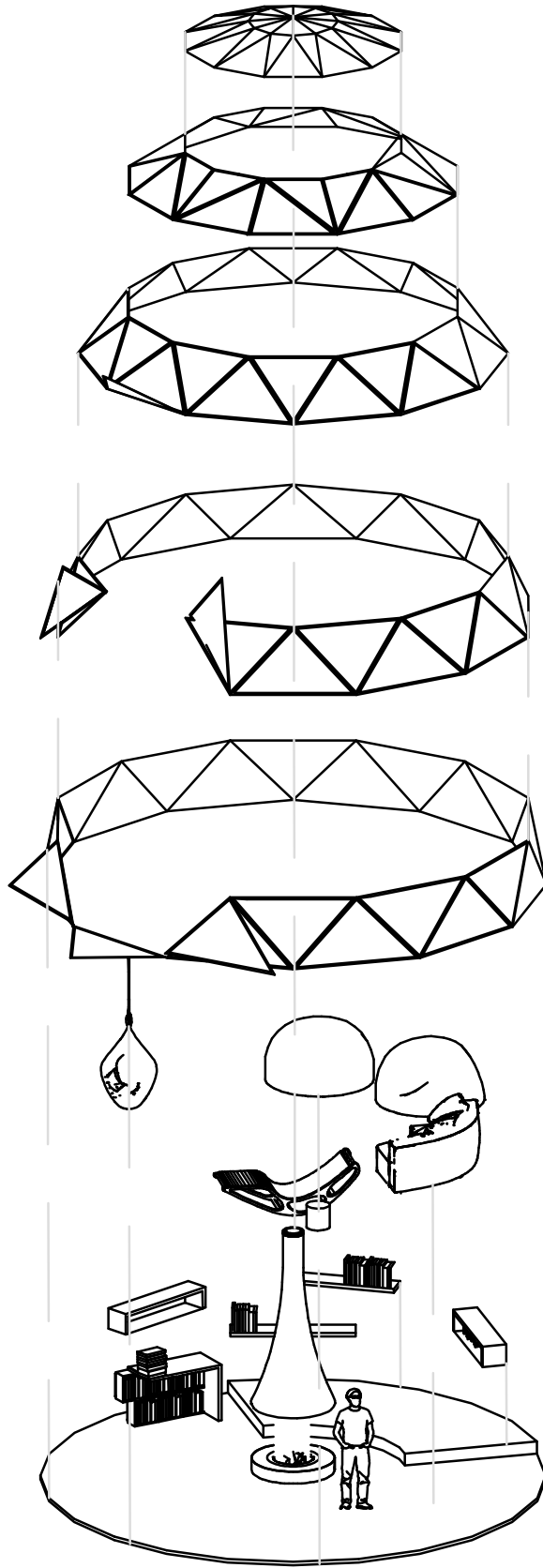
SECTION 1



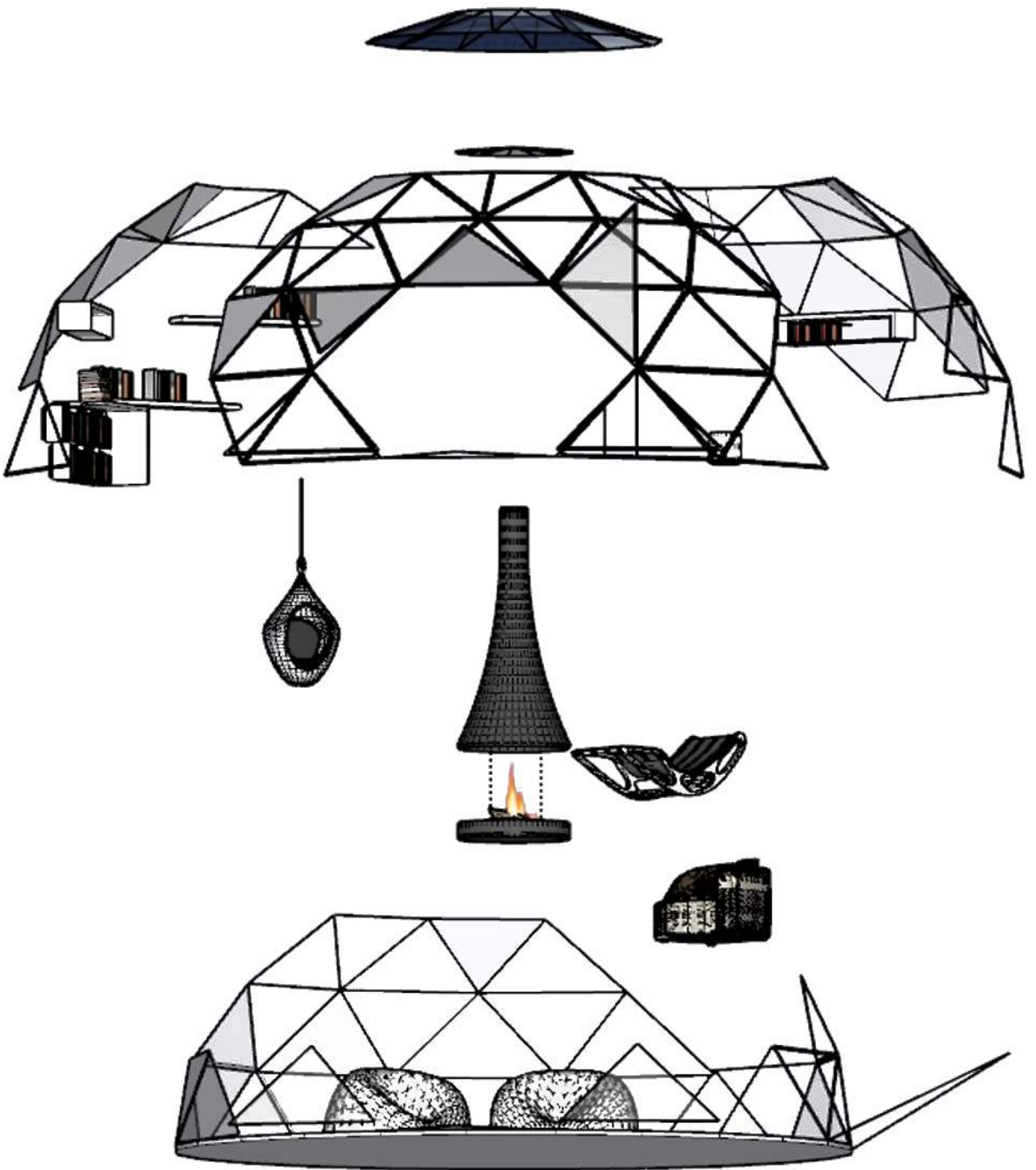
INTERIOR PERSPECTIVE 1



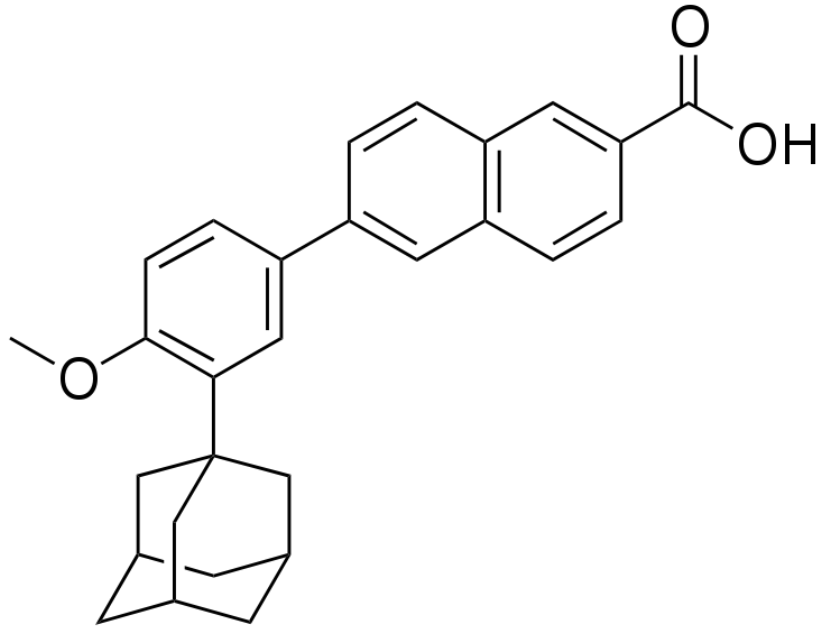
INTERIOR PERSPECTIVE 2



AXONOMETRIC EXPLODED VIEW



EXPLODED VIEW



CHEMICAL STRUCTURE OF ADAPALENE

CORPORATE DESIGN

CONCEPT

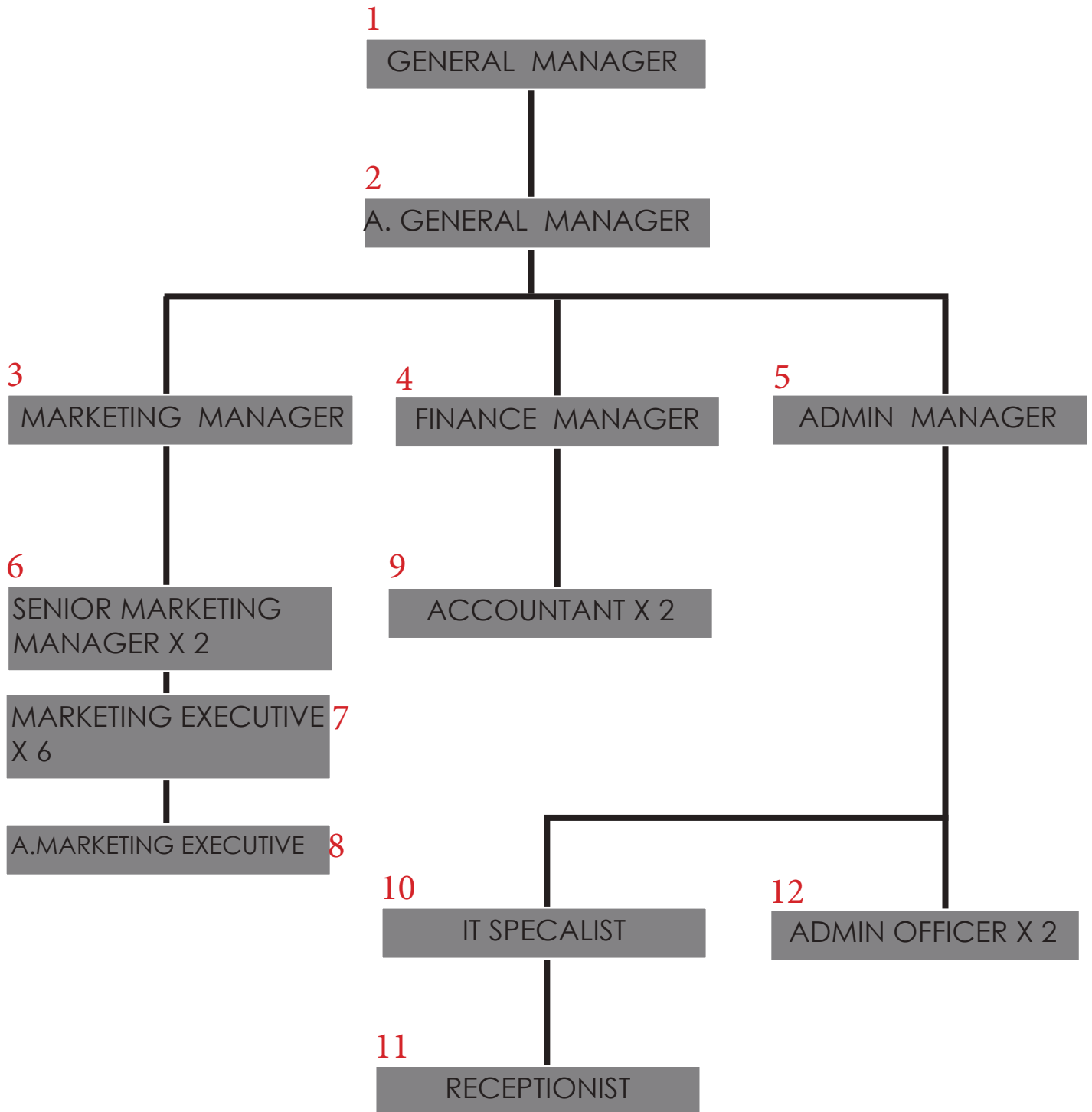
This concept is inspired from the very first medicine Galderma discovered: "Adapalene". I thought this inspiration gives meaning for their motto "progression of innovative technologies and products" which is where their innovation started and still having curiosity in developing science and technology.

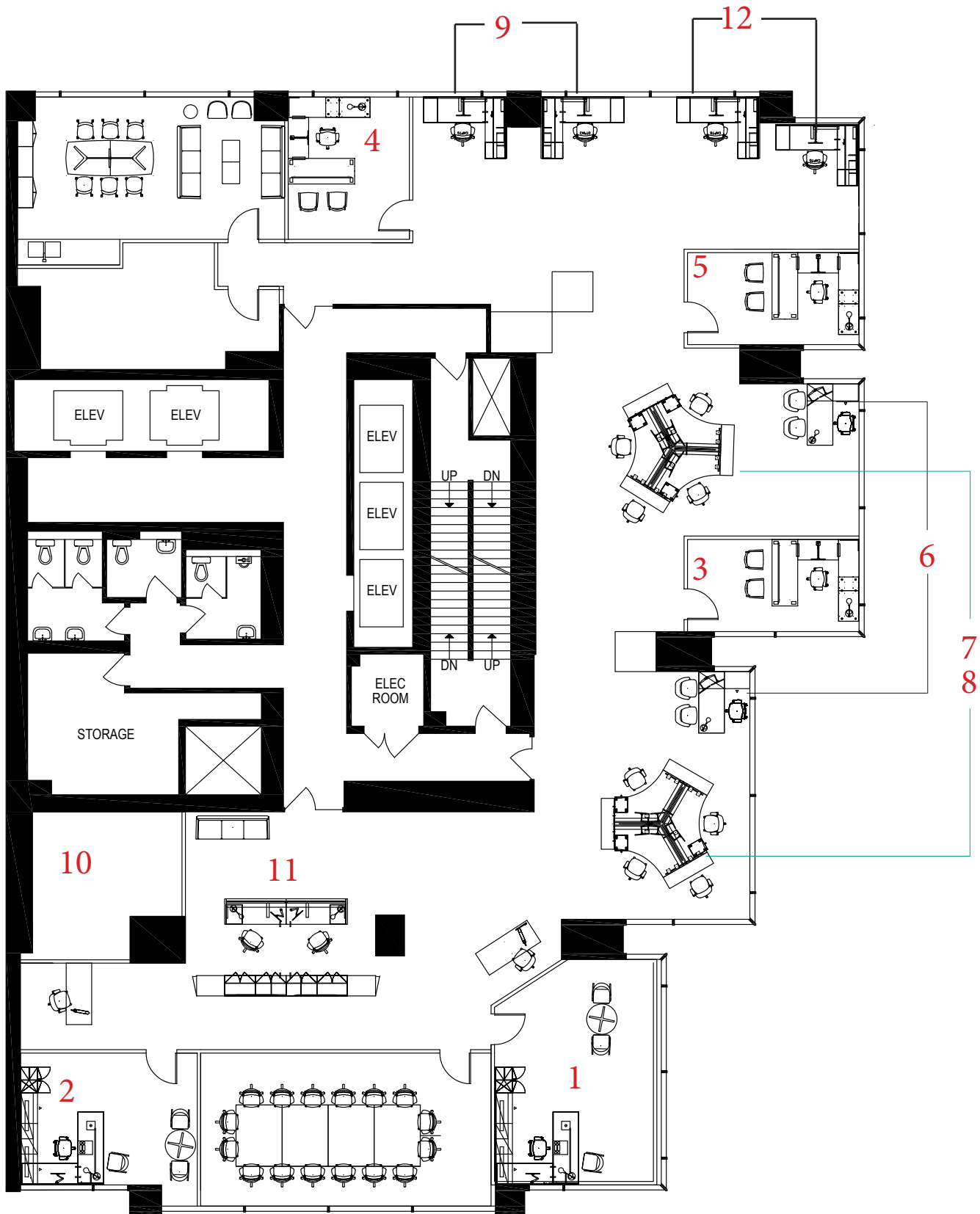
As the hexagon is found throughout nature, organised religions insist it is a symbol of harmony and balance. The shape of Human skin cell is Hexagonal. However, the esoteric wisdom of the hexagon goes much deeper –right to the heart of our origins. Of all the geometric shapes in sacred geometry, the hexagon is arguably the most powerful and fascinating.



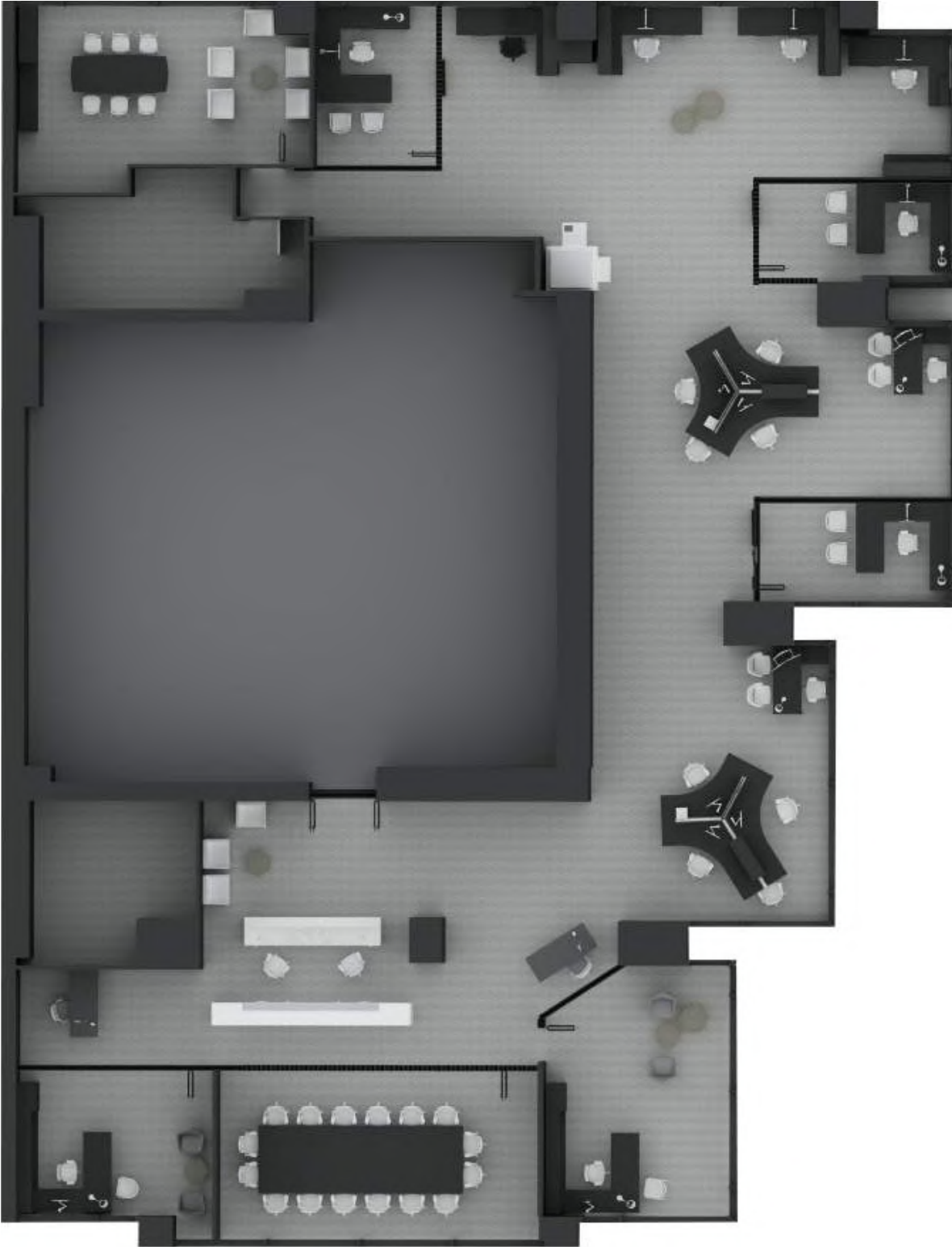
GALDERMA DESIGN

ORGANIZATION CHART





FLOOR PLAN



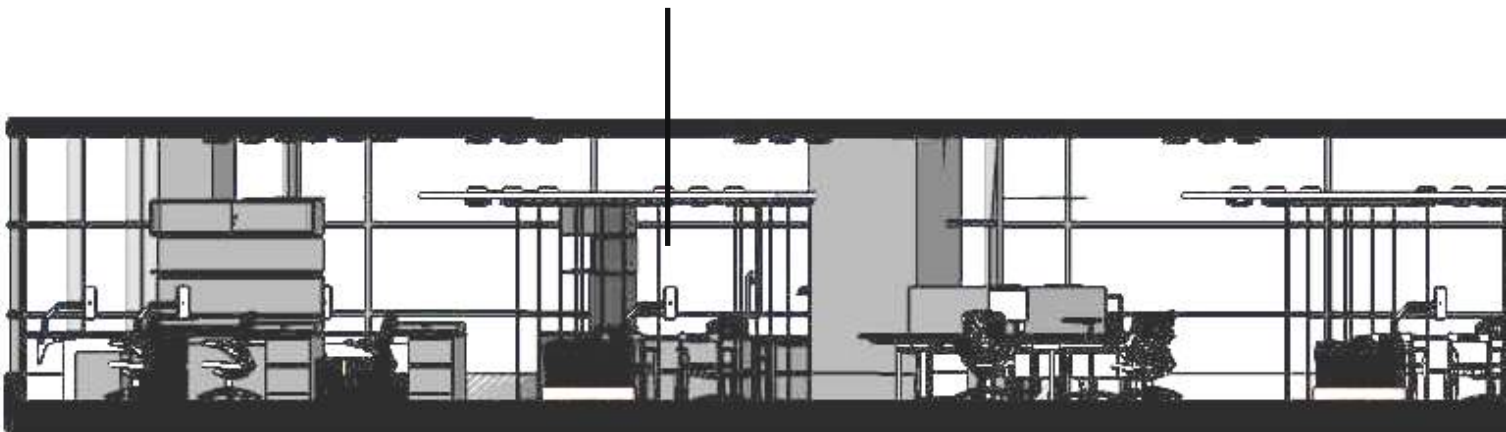
FLOOR PLAN (PHOTOSHOP)

SYMBOL	IMAGE	LOCATION	DESCRIPTION	SPECIFICATIONS
F1		GM AND AGM PERSONAL ROOM	16'X11'	KNOLL FURNITURE
F2		OPEN AREA	7'X5'	KNOLL FURNITURE
F3		MANAGERS ROOM (MARKETING FINANCE AND ADMIN)	10'X11'	KNOLL FURNITURE
F4		OPEN AREA (SR. MARKETING)	8'X10'	KNOLL FURNITURE
F5		OPEN AREA (MARKETING EXE.)	12'X13'	KNOLL FURNITURE
F6		OPEN AREA (ACCOUNTANTS AND ADMIN)	13'X7'	KNOLL FURNITURE
F7		OPEN AREA (RECEPTION)	19'X10'	KNOLL FURNITURE
—		BOARD ROOM	23'X11'	KNOLL FURNITURE
F9		BREAK ROOM	13'X11'	KNOLL FURNITURE
F10		BREAK ROOM	11'X10'	KNOLL FURNITURE

FURNITURE SCHEDULE



MANAGER'S OFFICE



SECTION 1



GENERAL MANAGER'S OFFICE



SECTION 1



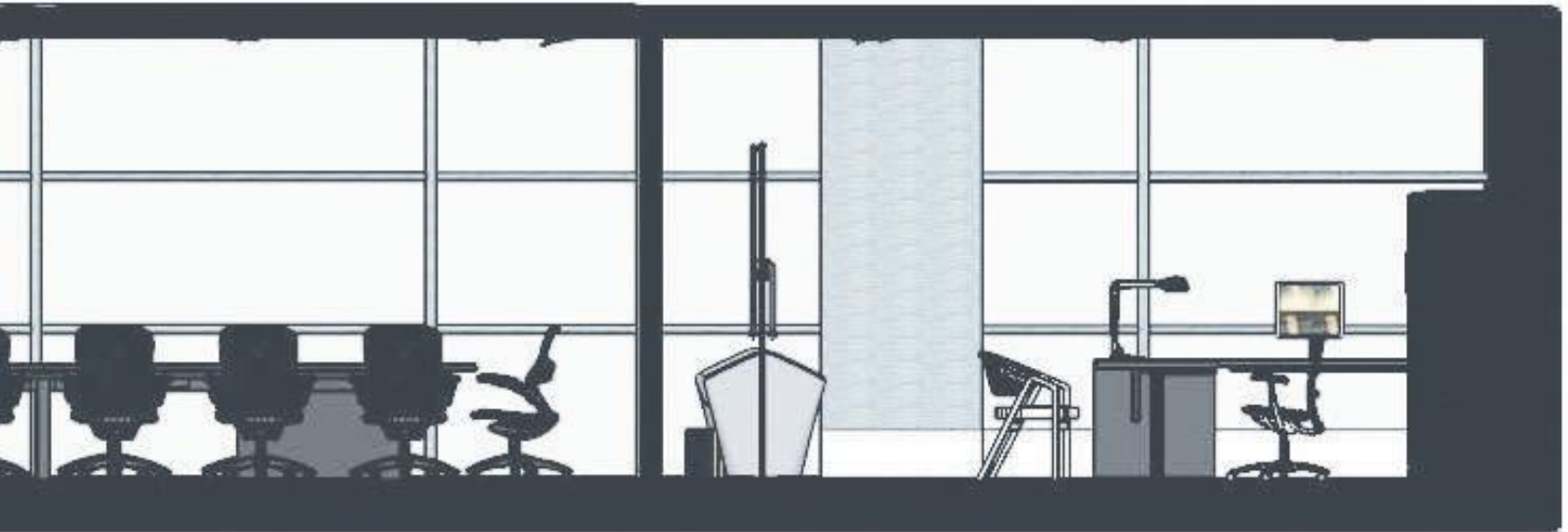
BOARD ROOM



SECTION 2



BREAK ROOM AND GENERAL MEETING PLACE



SECTION 2

COMMERCIAL DESIGN

CONCEPT ADIDANCE

adidance

Adidance is conceptual design for the all time favourite brand Adidas. This is equipped with shoe, which is plot to attract people emotionally.

It is exclusively designed considering the people with dreams.

INSPIRATION

This minimal insane concept is inspired by the hip hop dancer's choice and their importance for shoe. Hip Hop style originated in Bronx, New York city.

DISCOVERY

This concept is running in my mind when I met my friend's Dance Crew. They have a huge collection of shoes. I'm impressed by their love and connection towards their shoe. The one thing special about this crew is that, these people keep their shoes in a safe instead of leaving them in storage. They treat shoes as a treasure. I really wanted to show their respect by giving a recognition. So I came up with an idea which represent their emotions by introducing safes in the store. A dancer trusts his shoe more than anything.

DESIGN

The interior atmosphere is featured with neon lighting, a dance floor and has safes for display. It gives the feeling of a dance floor as well as the importance of shoe and what they are meant for a dancer.

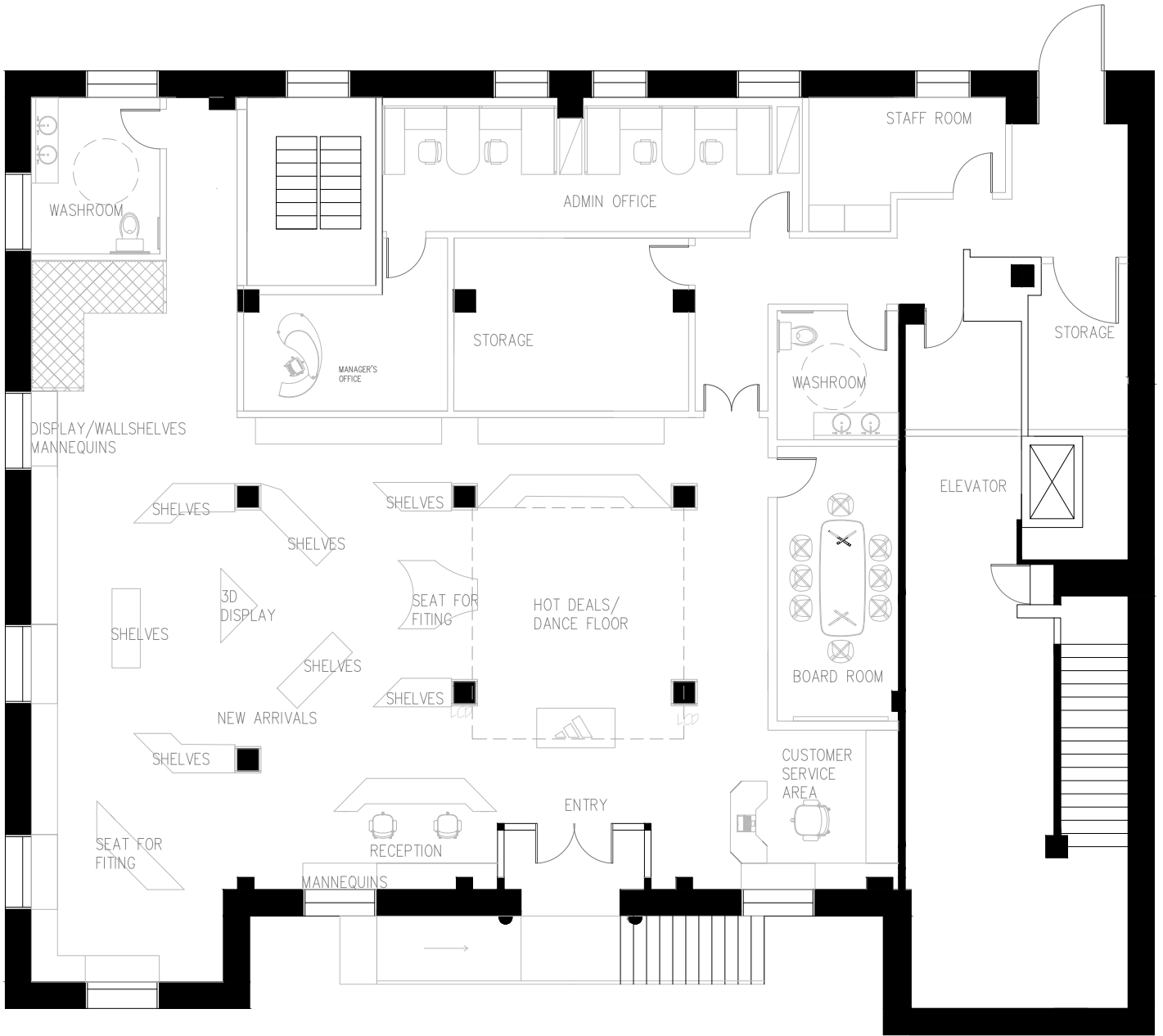
SCHEDULE

This store has specific open hours which are mainly in evenings.



SPACE PROGRAMMING

SPACE LABEL	AREA SQ. FT.	NUMBER	OVERALL
ENTRY	100	1	100
WASHROOMS (ACCESSIBLE)	35	2	70
RECEPTION/ CASHIERS DESK (PER PERSON)	25	2	50
FITTING ROOM	12	6	72
STAFF ROOM (4-6 PEOPLE)	150	1	150
ADMIN OFFICE (4 EMPLOYEES)	350	1	350
BOARD ROOM	220	1	220
MANAGER'S OFFICE	70	1	70
STORAGE	300	1	300
CUSTOMER SERVICE	60	1	60
DISPLAY	1760	1	1760
LCD DISPLAYS			60
3D DISPLAYS			100
MANNEQUINS			300
HOT DEAL DISPLAY / dance floor			300
NEW ARRIVAL			300
WALL SHELVES			700
TOTAL			3202
AVAILABLE EXISTING SPACE			4200
CIRCULATION (20%)			1000
USED SPACE			3200

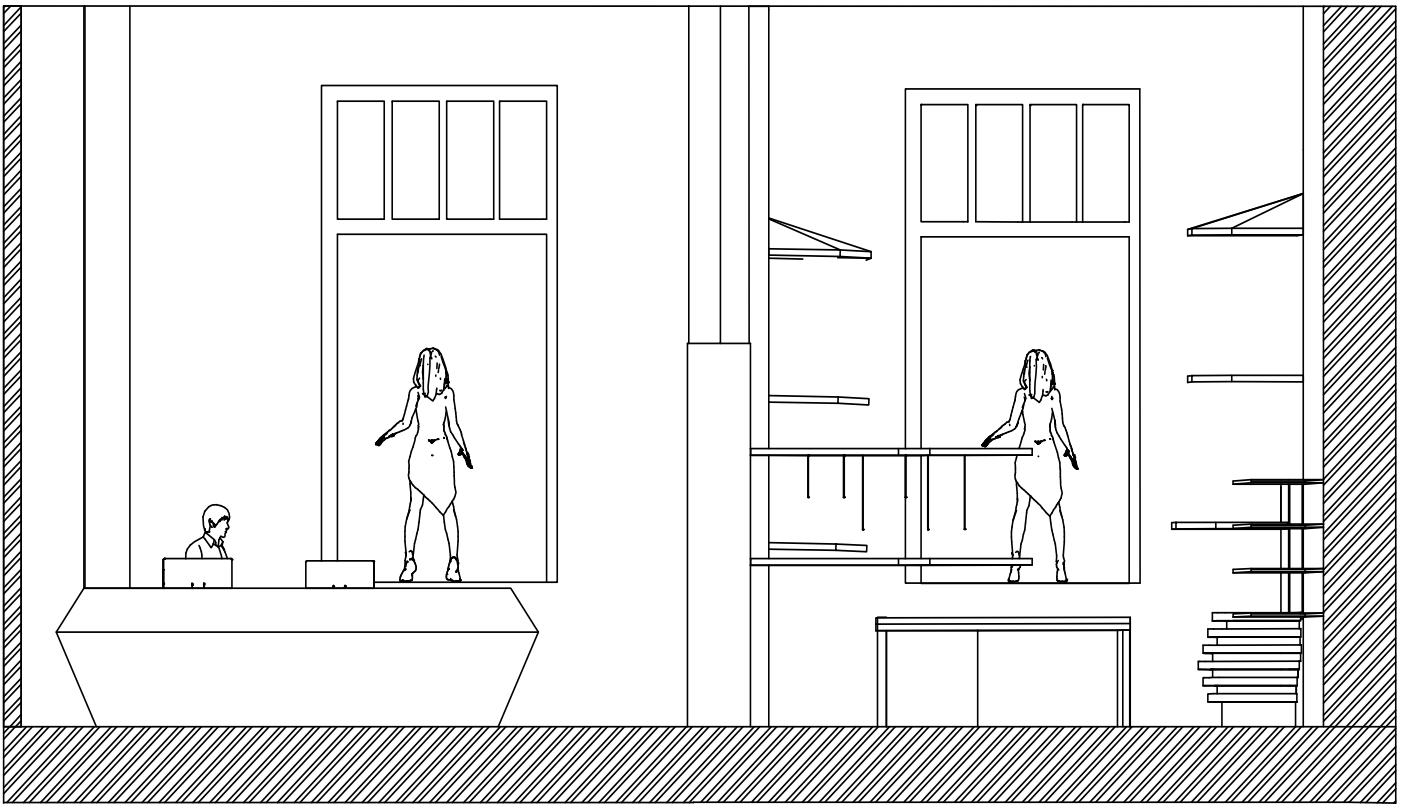


FLOOR PLAN

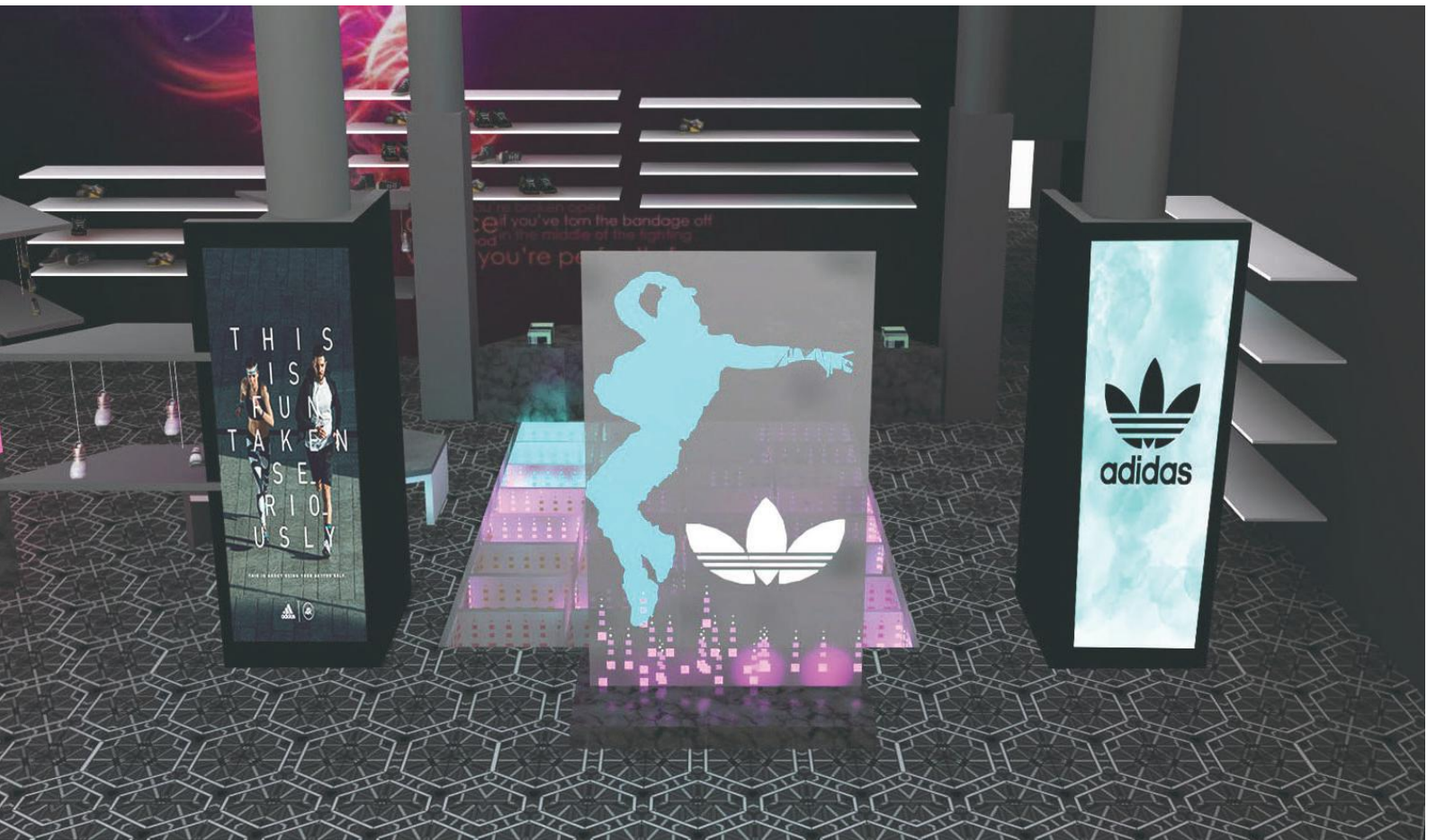
VANCOUVER HERITAGE HALL

The Heritage Hall is a historical building in Vancouver, dating back to 1914 and classified by the City as a designated heritage building. It is located on Main Street, in the Mount Pleasant neighborhood. The building was designed by architect Archibald Campbell Hope to serve as a post office. Reportedly, the design was derived from a misdirected set of plans that were meant for another city in the Prairies, which got the smaller building meant to have been constructed here. In the 1970s the building was briefly occupied by the Royal Canadian Mounted Police, before being transformed into a community arts venue in the following decade. The Hall stills keeps this function today, besides being used as a venue for weddings and other events. The challenge is to design a commercial store in this same space without disturbing any of its Heritage Structure. The main floor occupies an area of 1500sq. ft.

CHALLENGES



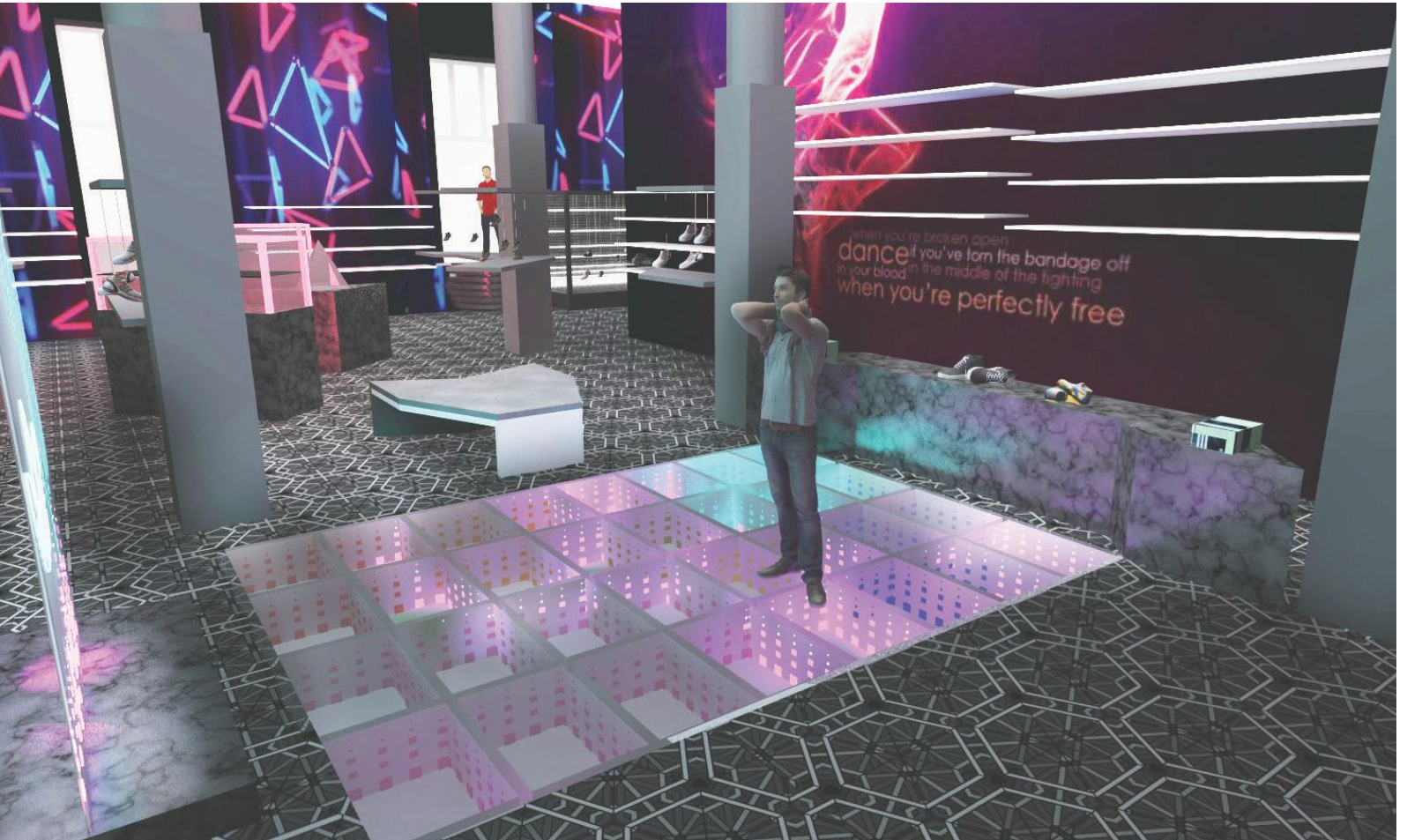
ELEVATION



ENTRY



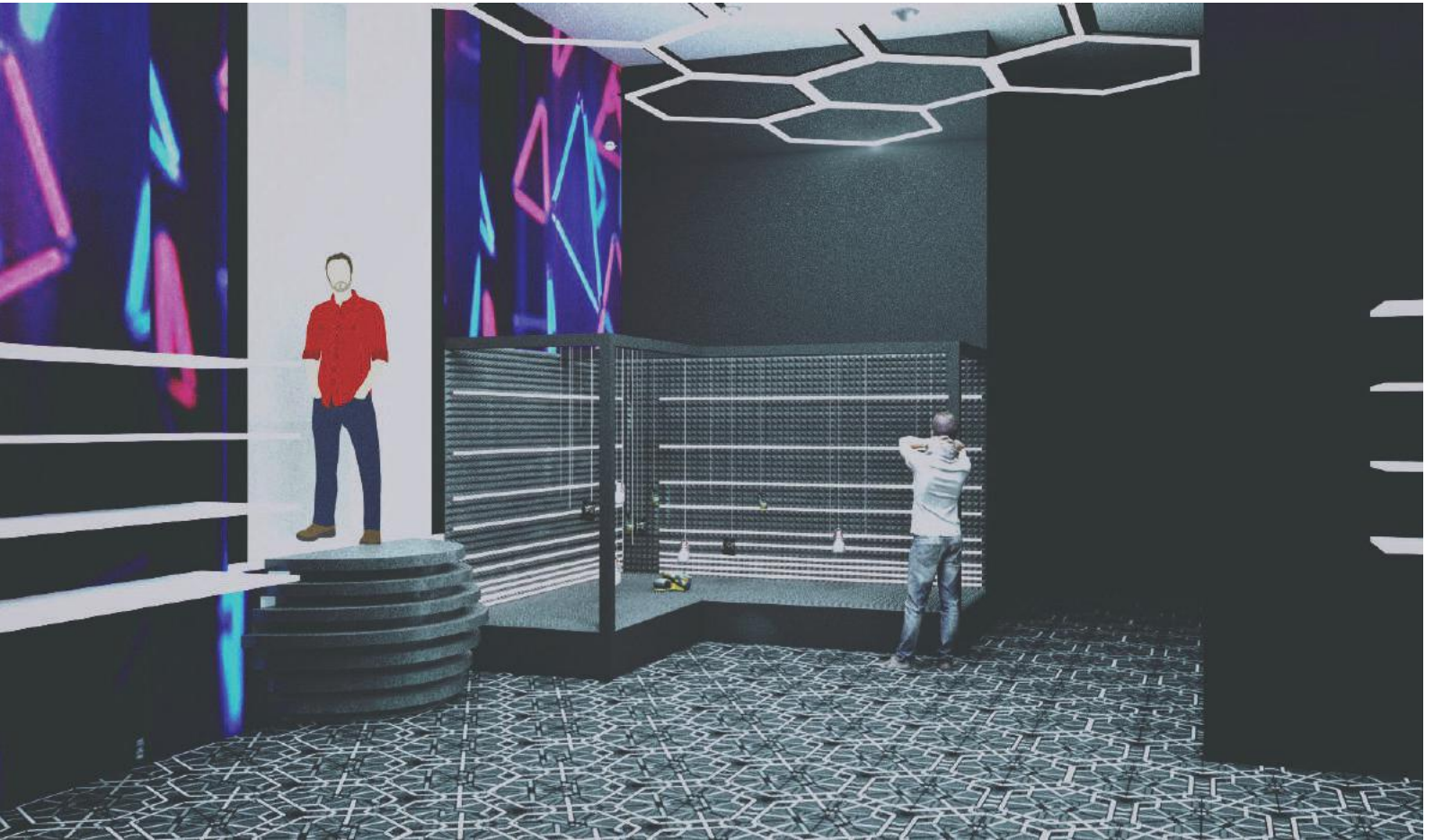
RECEPTION



DANCE FLOOR



CENTRAL FEATURE

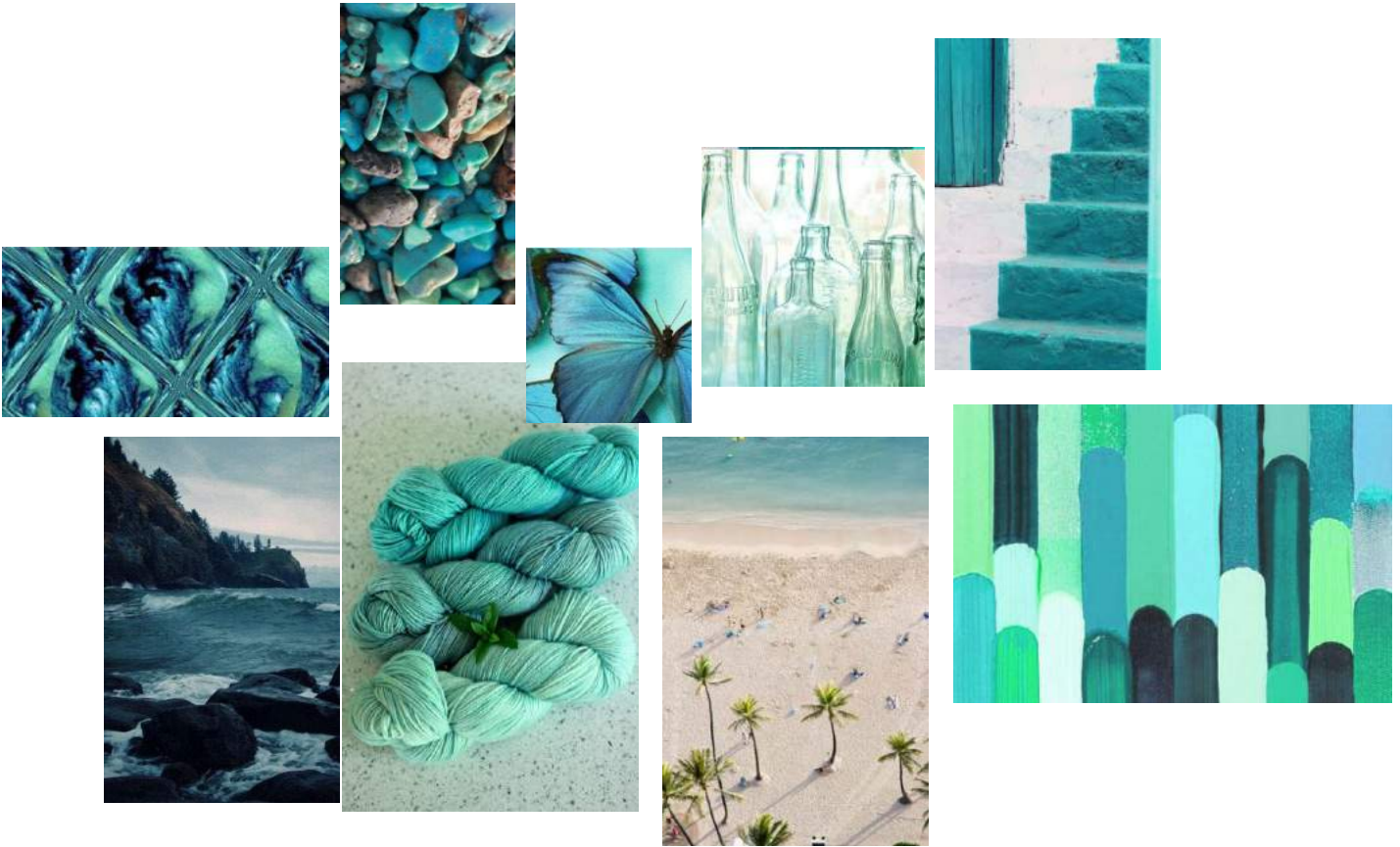


DISPLAY



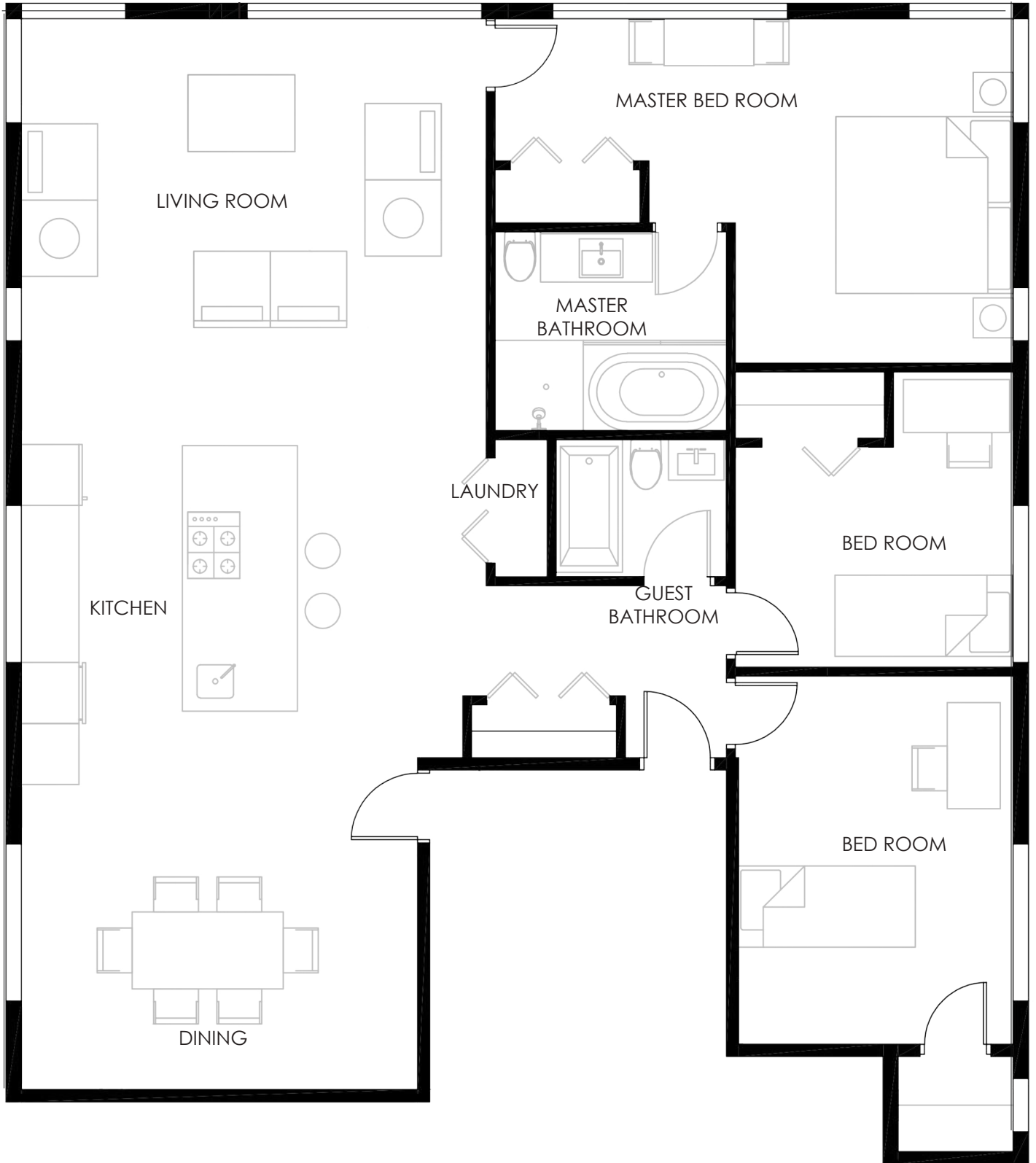
DISPLAY

INSPIRATION

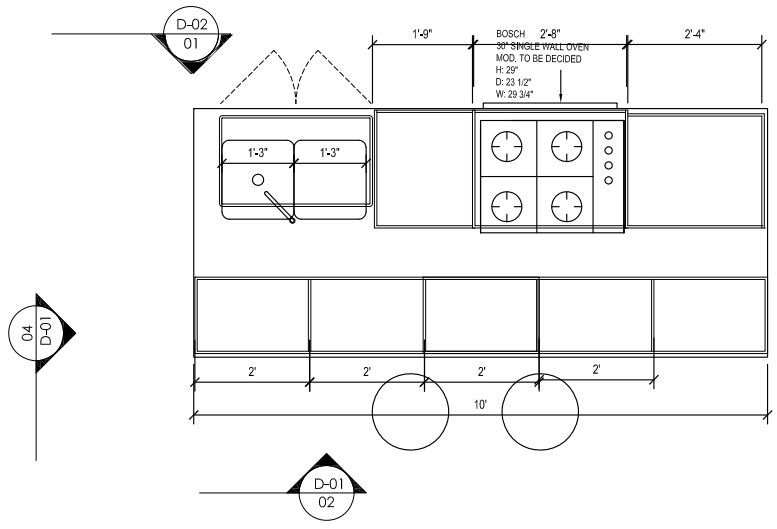
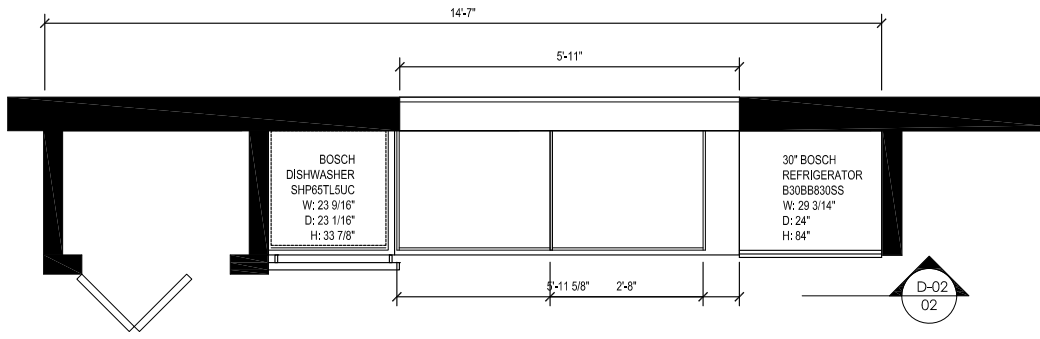


RESIDENTIAL DESIGN

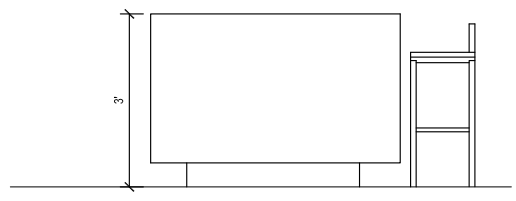
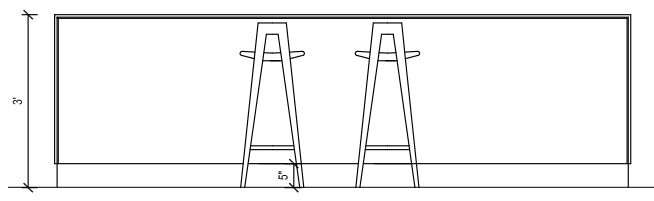
Family
Couple with 2 girls.
Age 6-8. The oldest one loves books.
Mom is a teacher and spends time working at home. She loves to cook.
Dad is a lawyer. He works long hours outside the home and travels a lot for work



FLOOR PLAN



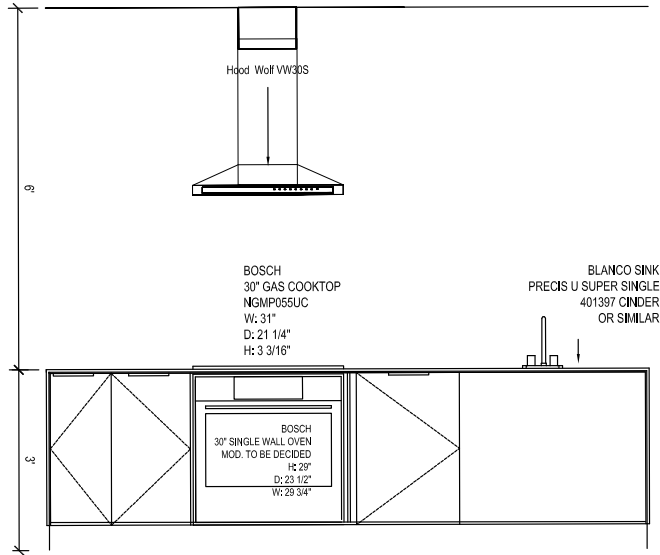
01 FLOOR PLAN
D-01 1/2" = 1'-0"



02 ISLAND ELEVATIONS
D-01 1/2" = 1'-0"

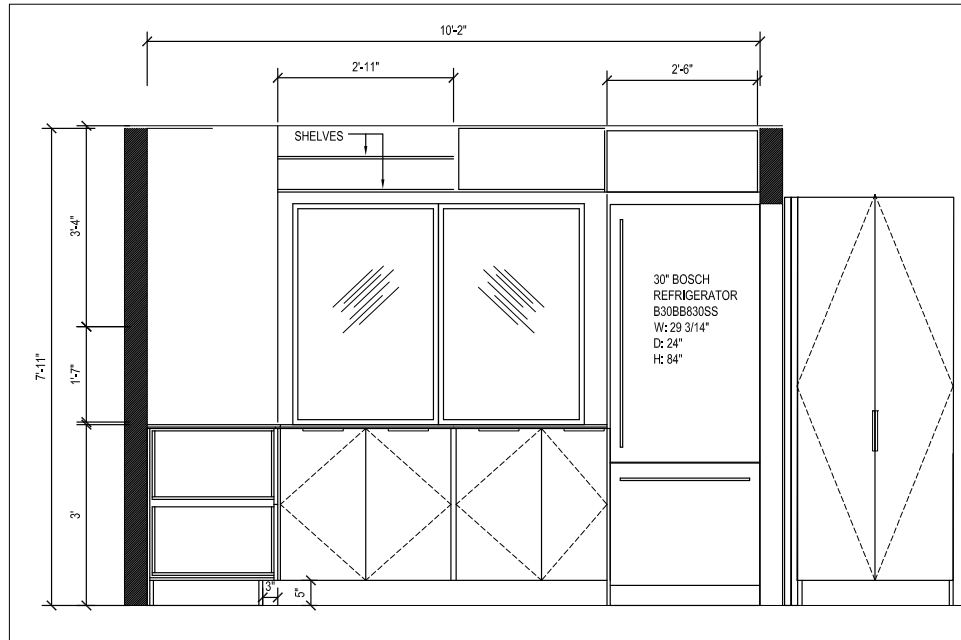
04
D-01

KITCHEN ELEVATION 1



01 SECTION
D-02

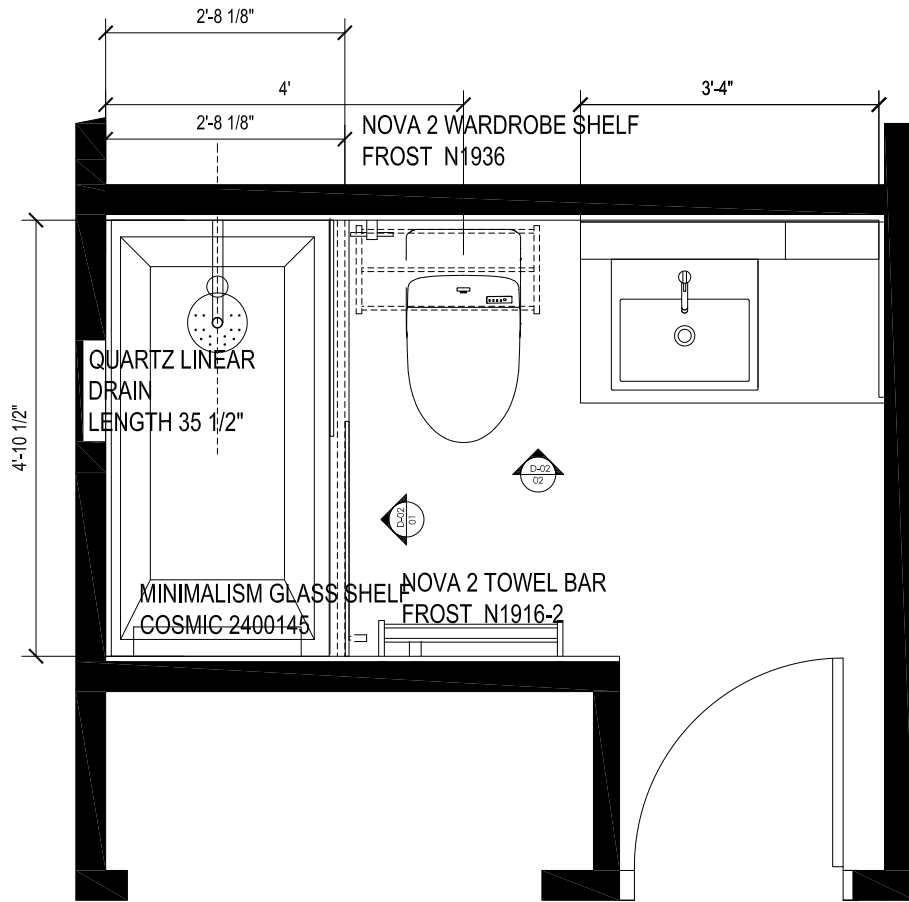
1/2" = 1'-0"



02 SECTION
D-02

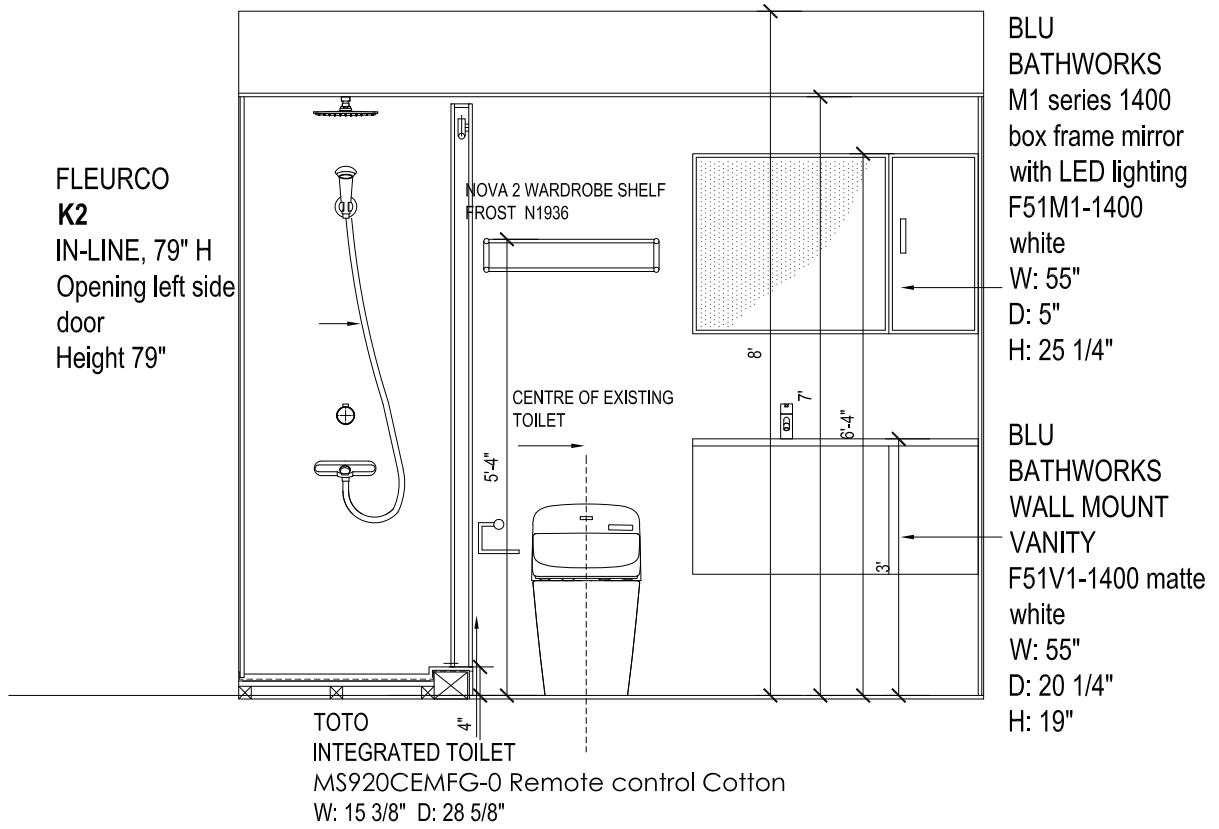
1/2" = 1'-0"

KITCHEN ELEVATION 2

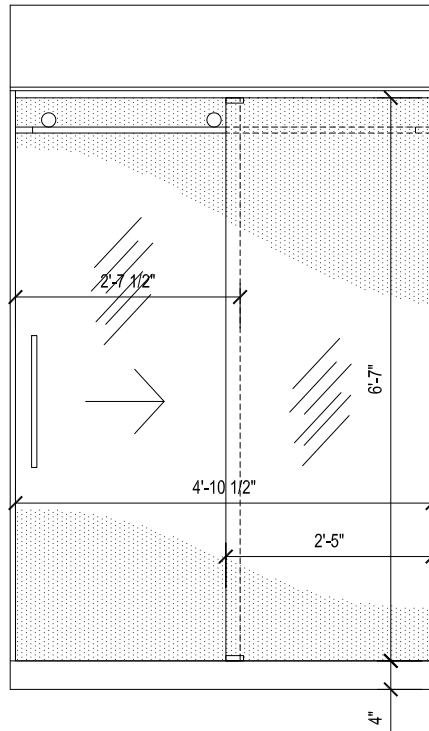


03 PLAN
D-02 1' = 1'-0"

BATHROOM ELEVATION 1



02 ELEVATION
D-02 1" = 1'-0"



01 ELEVATION
D-02 1" = 1'-0"

BATHROOM ELEVATION 2

