



Navjot Khangura

CONTACT

Tel: (604) 719-4941
Email: navjotkhangura@gmail.com
Web: <http://navjotkhangura.wix.com/interior-design--por>



Design is about inspiration, originality and creating a client's vision. My personal inspiration for design comes from meeting new people, traveling, experiencing different cultures and paying attention to details. My love of travelling and passion for design facilitates my ability to create and work with different clients. The fact that there is no limit in design pushes my creativity, continued education and inspires my design growth. My design style stems from a culmination of my travels, meeting new people, and bringing vision to life.

Design is a plan for arranging elements in such a way as best to accomplish a particular purpose.

- Charles Eames

TABLE OF CONTENTS

01

EDUCATION

- RIDGVIEW ELEMENTARY SCHOOL

02

COMMERCIAL

- FORM 3 OFFICE

03

RESIDENTIAL

- VANCOUVER CONDO DESIGN

EDUCATION

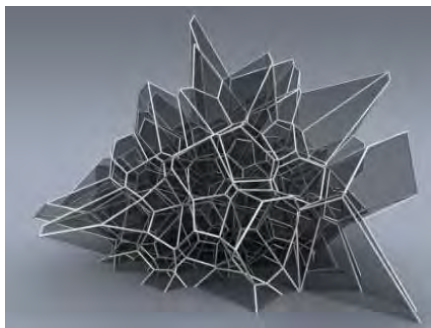
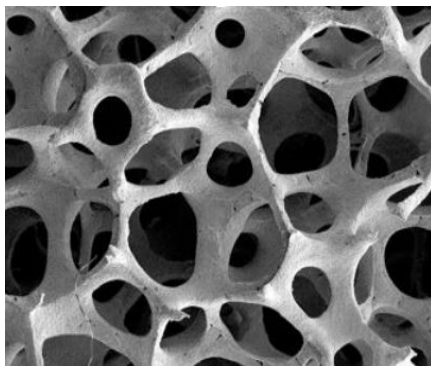


ENTRANCE

01

RIDGEVIEW ELEMENTARY SCHOOL

CONCEPT IMAGES



SITE PLAN



KEY PLAN

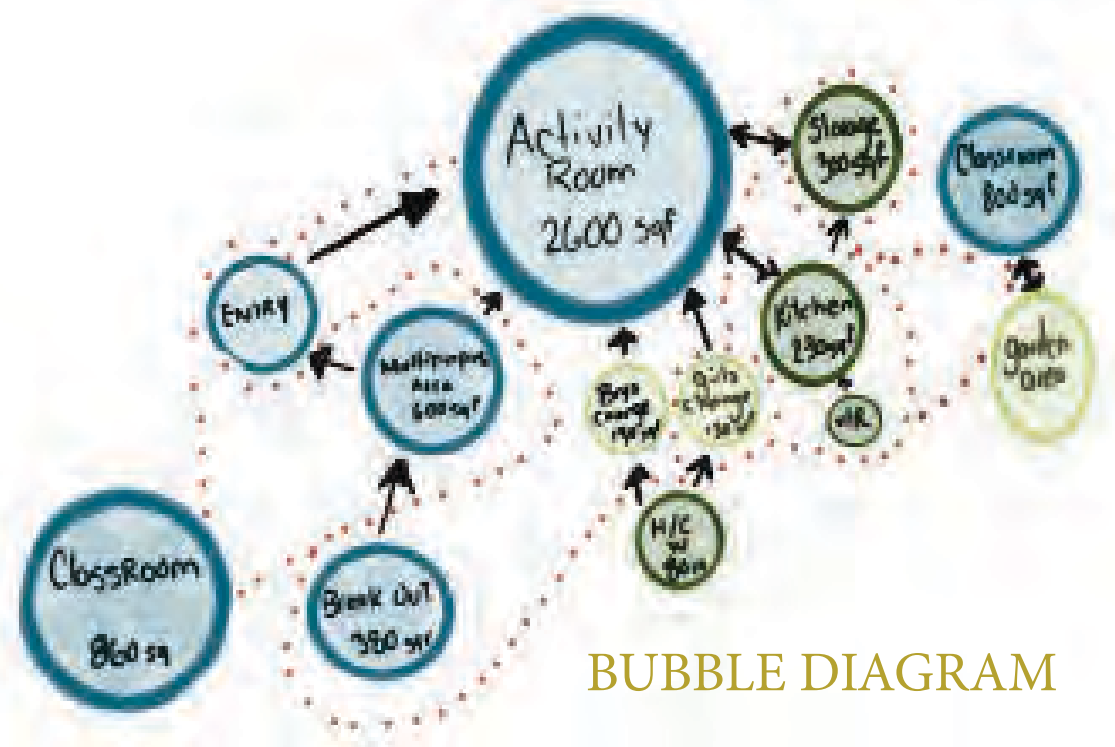


CONCEPT

The design basis is about cell structure, All living things are composed of cells. Cells are the basic units of life and all tissues and organs are composed of cells. It has many structures inside then which are called organelles. These organelles are like organs in a human and they help the cells stay alive. Each

DESIGN INTENT

The design intent is to use the element of the cell structure and create a comfortable and open layout for the teachers and students. The open spaces will allow more accessibility and organization of the layout.



BUBBLE DIAGRAM

THE SPACE

Considering the overall space of the school and its individual rooms, the storage needs to be organized, so its better functioned. The gym area needs a stage that could be movable, also seating (bleachers). Also the the students need a areas where they can hang-out and study, breakout areas.



BLOCK DIAGRAM



PHASE ONE

Phase one is where i will focus on the gym, storage, change rooms and the breakout.

PHASE TWO

In phase two, the focus will be the classroom, to incorporate breakout spaces in between the classrooms and design more flexible space for the students and teachers

PHASE THREE

Phase three, will be focusing on the landscape to create a vegetable garden for kids to learn about growing and planting.

CLASSROOM PERSPECTIVE



FLOOR PLAN



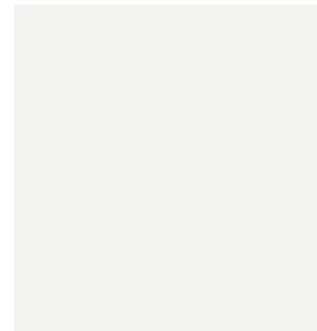
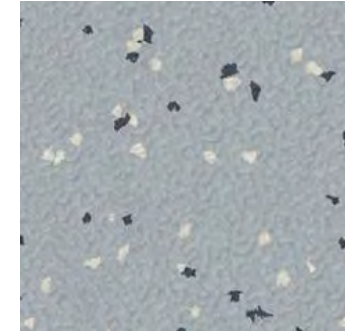
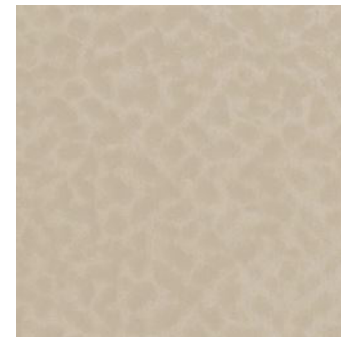
FURNITURE



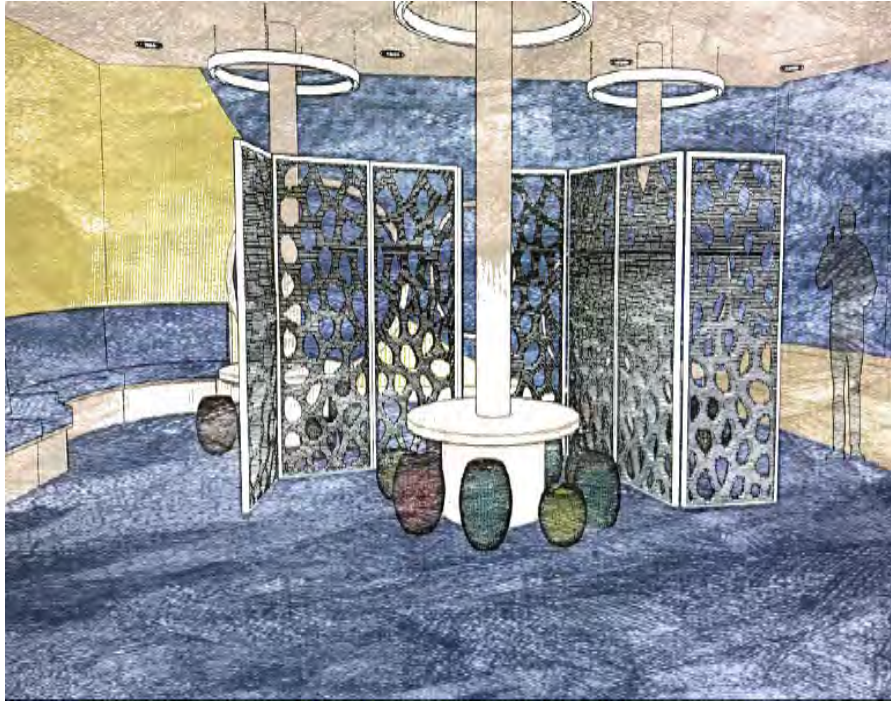
CLASSROOM

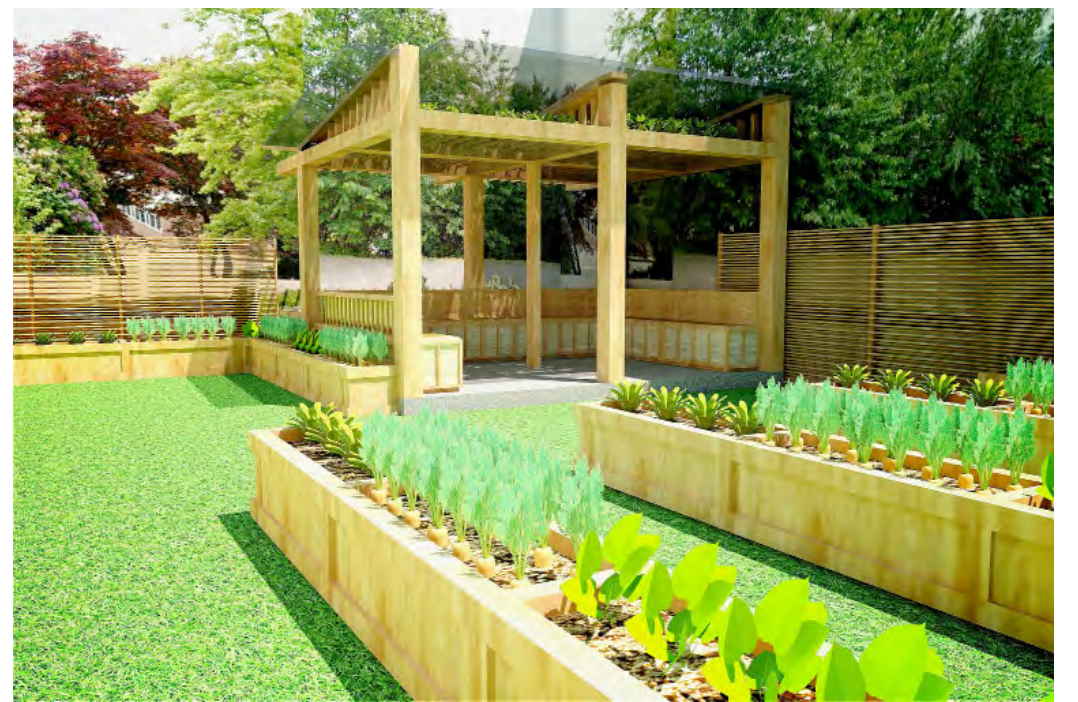


CLASSROOM PERSPECTIVE



MATERIALS





COMMERCIAL

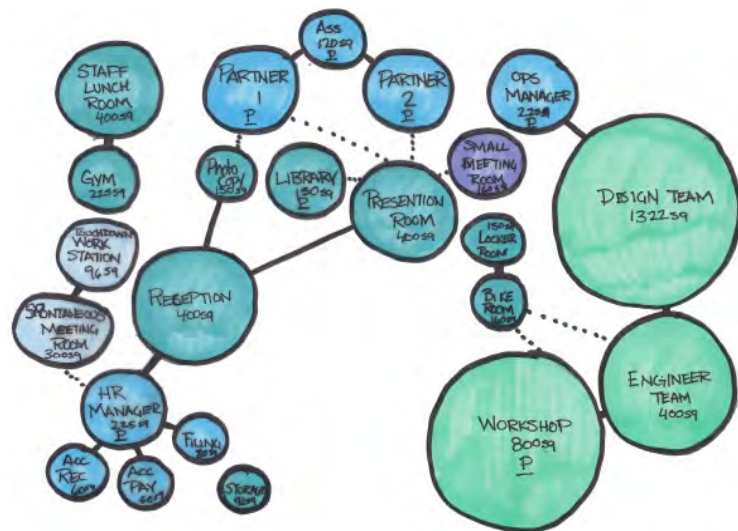
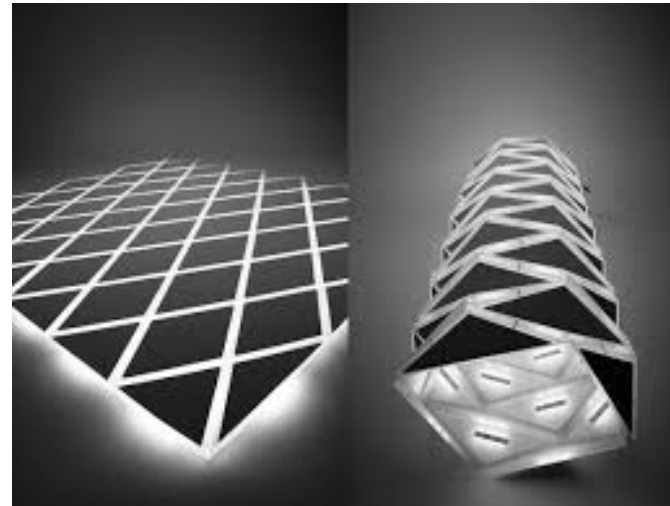


RECEPTION

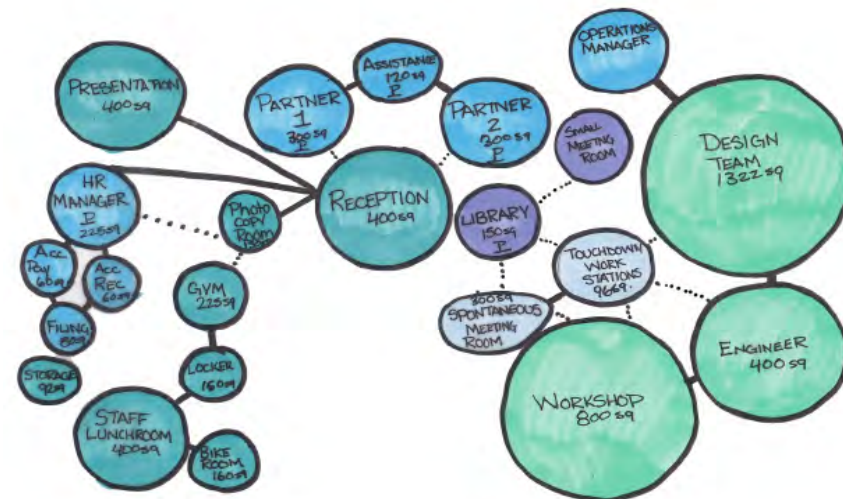
02

FORM 3

CONCEPT IMAGES



BUBBLE DIAGRAM A



BUBBLE DIAGRAM B



BLOCK DIAGRAM

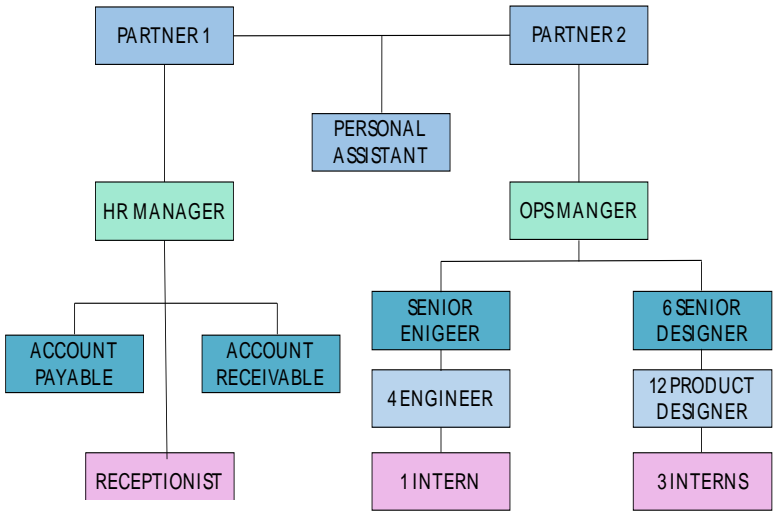


CONCEPT

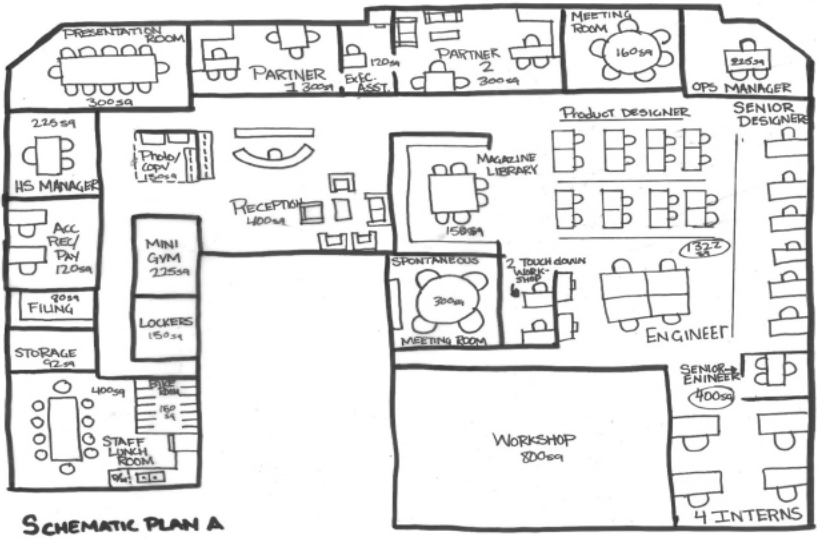
The overall design concept is to create a design which reflects simplicity and elegance, most importantly the office should reflect their design ethos and business principles of the company. To achieve the design the firm is look for I would like to use manipulation of shape and form and combination of the vitrine element to create an aesthetic yet practical display unit. The concept is to use clean lines, accessory free space, and cool colours, furniture's that has modern design elements to create the style of the office space. To essence of modern interior design include basic shapes, functional lines and curves, glass and frosted glass it to be used through out the space to enhance the look. The off will utilize the principles of open design allowing natural light to flow within the entire space to achieve an open communication.

CRITERIA MATRIX	SQUARE FOOTAGE	ADJACENCIES	PUBLIC ACCESS	DAYLIGHT/VIEW	PLUMBING	SPECIAL EQUIPMENT	SPECIAL CONSIDERATIONS
Presentation Room	300	2.85	M	L	L	monitor,board,chair	
Reception	400	3.85	M	M	L	chairs, table	includes oval client meeting, stone feature wall used by staff and clients
Partners 1 Office	300	12	M	M	L		
Partners 2 Office	300	12	M	M	L		
Personal Assistant Office	120	12	M	M	L		
HR Manager	225	6.515	L	M	L		
Operations Manager	225	1.89	L	M	L		
Accounting Workstation	800	11.10	L	M	M		
Staff Locker Room	150	16.18.22	L	L	M	lockers	built in custom locker
Staff Lunch Room	400	17.18.22	L	L	H	Tables, chairs, stove, fridge, coffee-maker	countertop cabinets, countertop with island
Bike Storage Room	150	17.18.22	L	L	L	bike storage	countertop built racks
Mini Gym	150	17.18	L	M	M	Treadmill, water cooler, weights, mats	cardio machines, yoga, and weights area
Reception/Magazine Library	225	10.15.12	L	M	L	desk, chair, bookshelves	special ordered floor lights, sofa set
Carrolland Filing	80	10.15.12	L	L	L		custom filing cabinets
Photographer Room	130	2.83	L	L	L	photocopy, paper recycling	
Storage/Photography Studio	92	5.2	L	L	L		
Accounting Portable Bookable	120	7.15	L	L	L		
Touchdown Workstations 2	90	15.10	L	L	M		
Spontaneous meeting 8	130	12.18.10	L	L	L		
Design Team 22	132	11.12.10.15	L	L	L		
Engineer Team Work 7	400	11.10.15	L	L	L		
TOTAL AREA:	9485						
ACTUAL:	9185						
NET CIRCULATION:	2700						
USABLE SPACE:	9485						

CRITERIA MATRIX



ORGANIZATION CHART



SCHEMATIC LAYOUT PLAN A



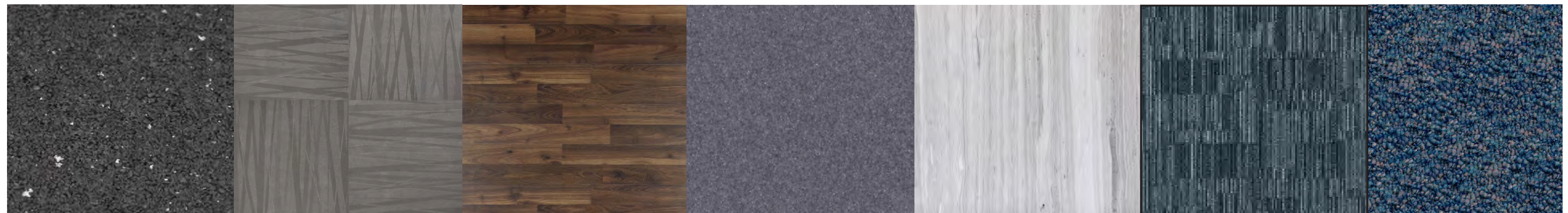
SCHEMATIC LAYOUT PLAN B



FLOOR PLAN



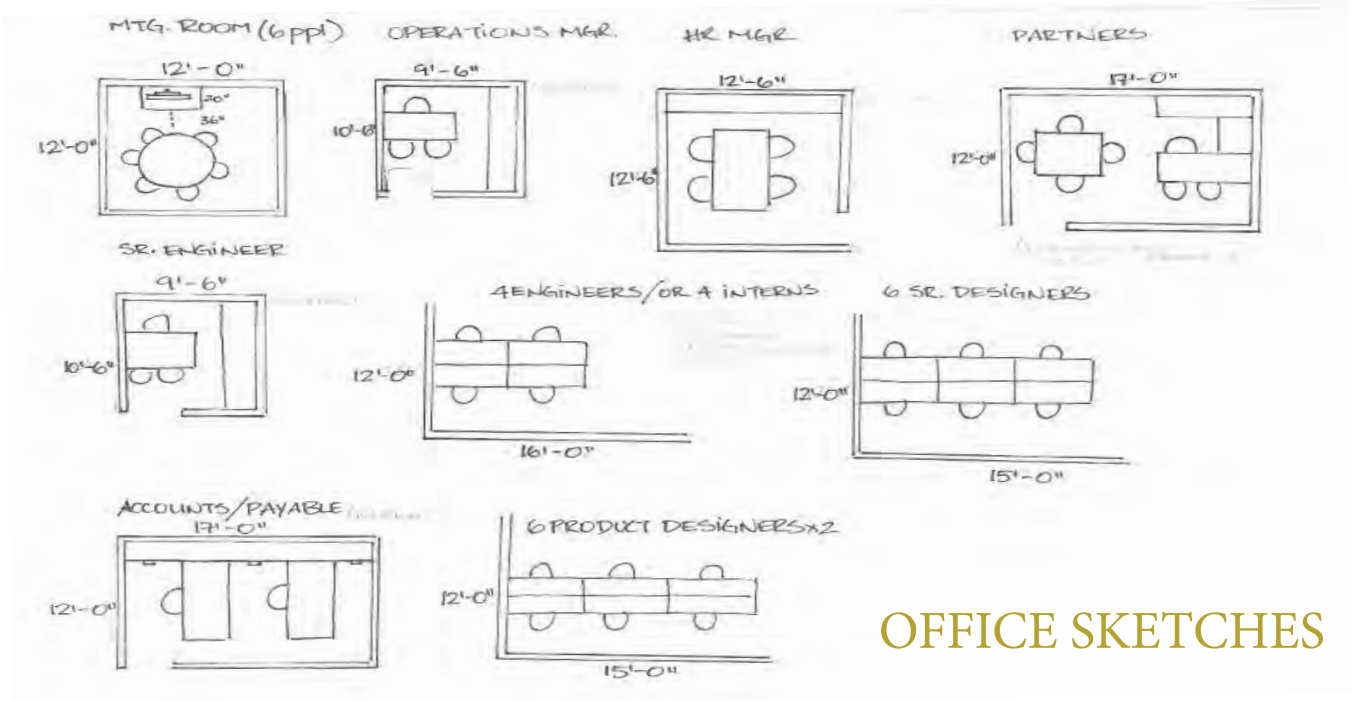
PRESENTATION ROOM



MATERIALS



WORK AREA



OFFICE SKETCHES

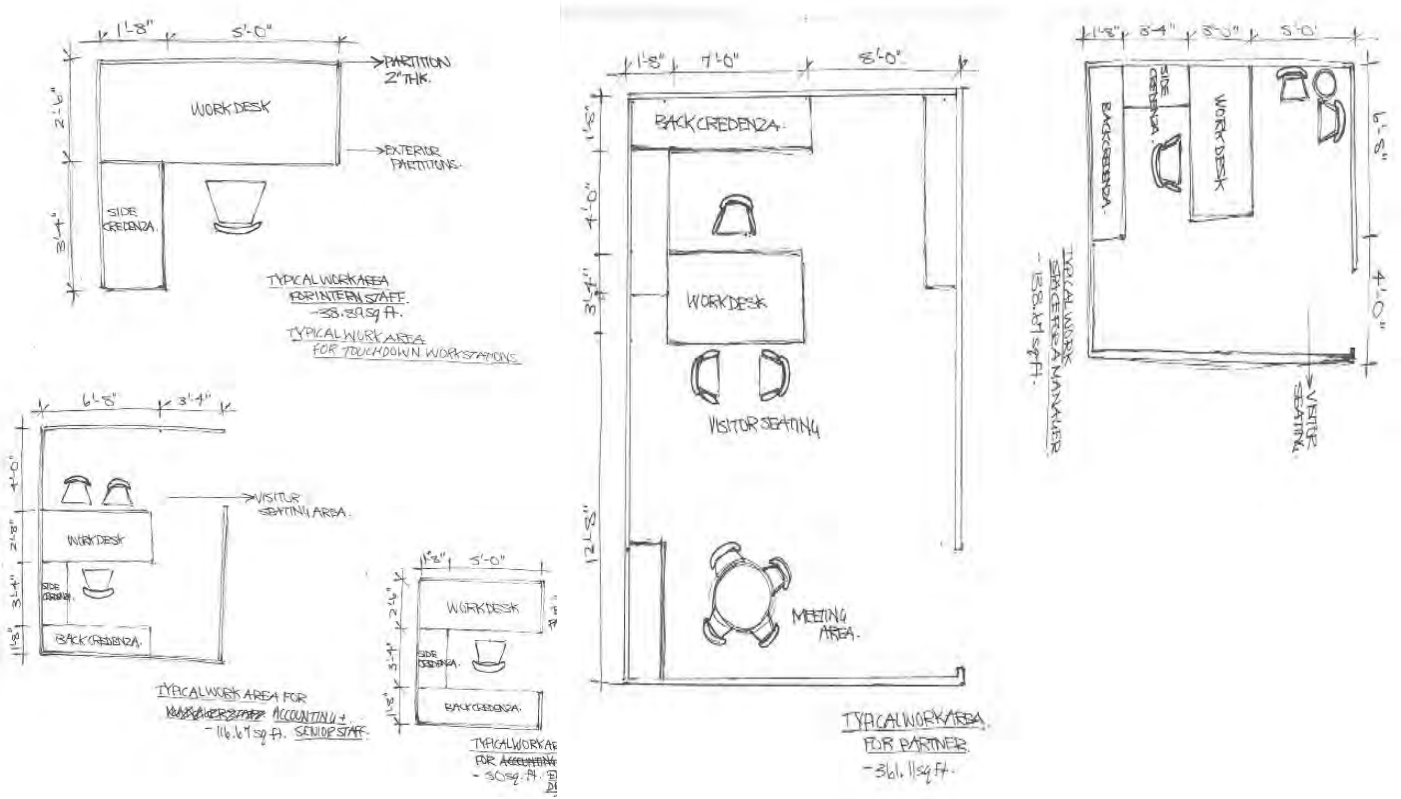


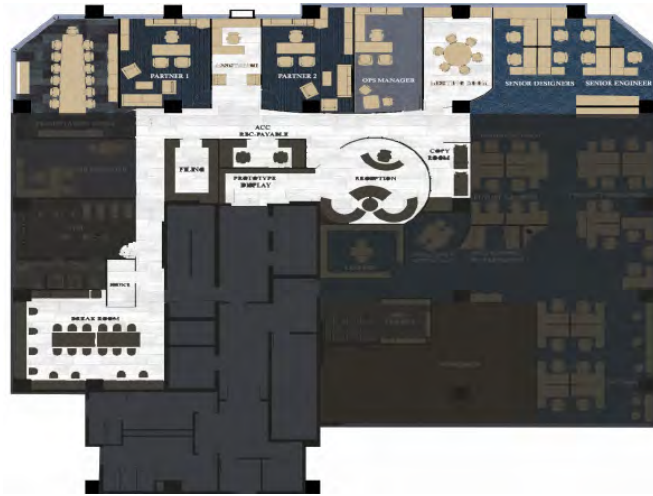
OFFICE



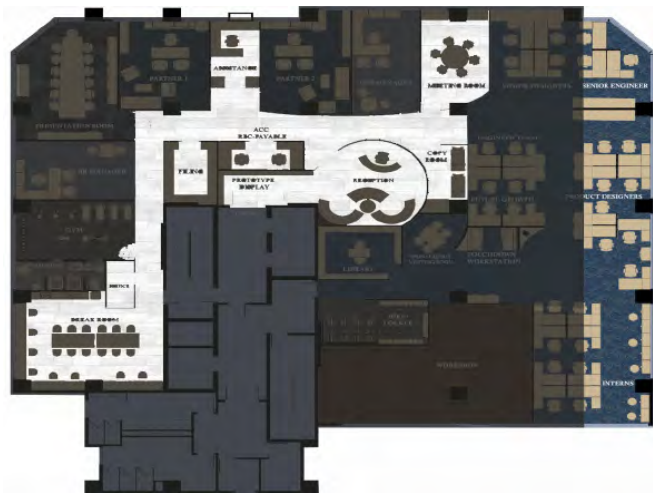
PARTNERS OFFICE

OFFICE SKETCHES





SECTION A-A



SECTION B-B





LUNCH ROOM



LUNCH ROOM

RESIDENTIAL



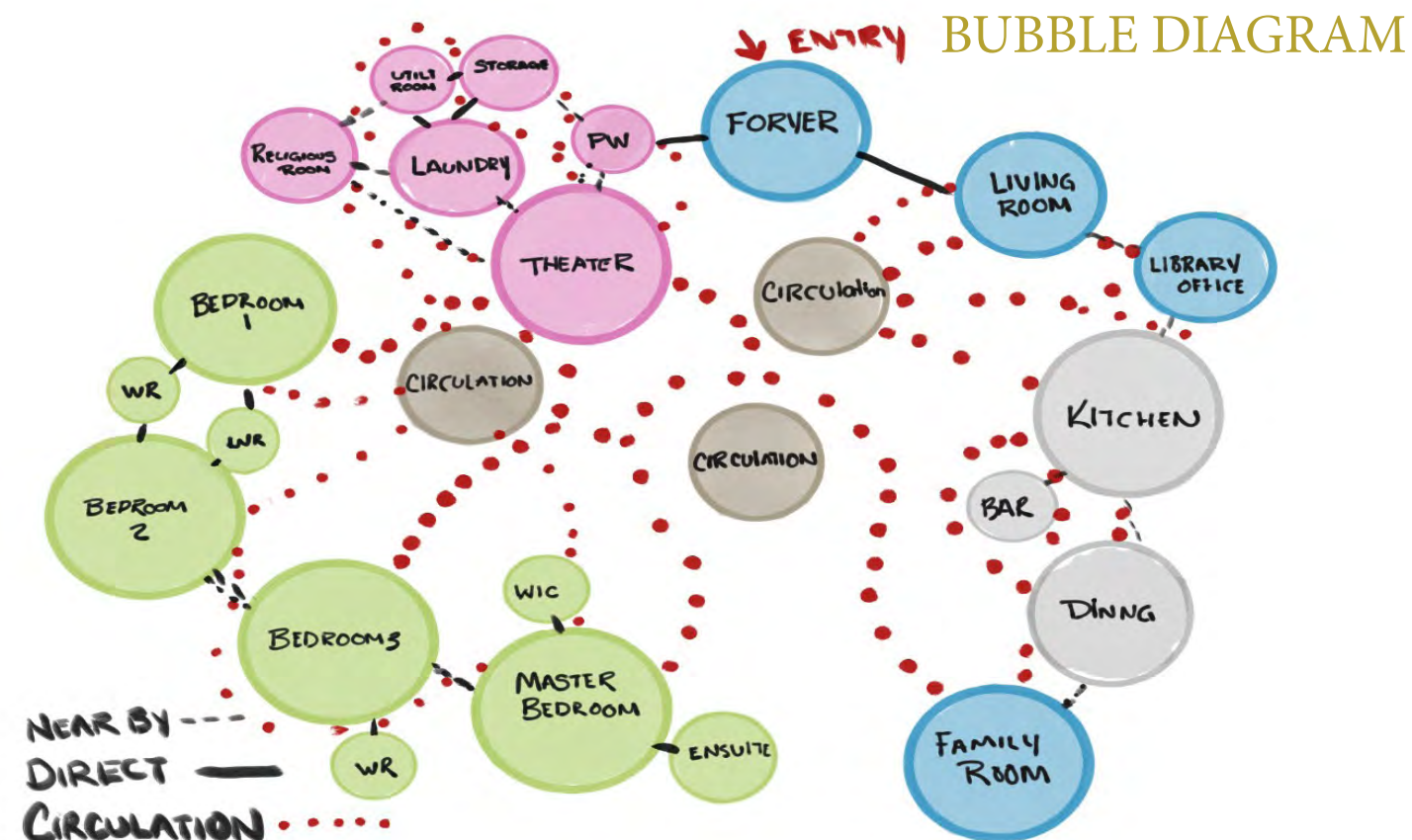
RESIDENTIAL

CLIENT PROFILE



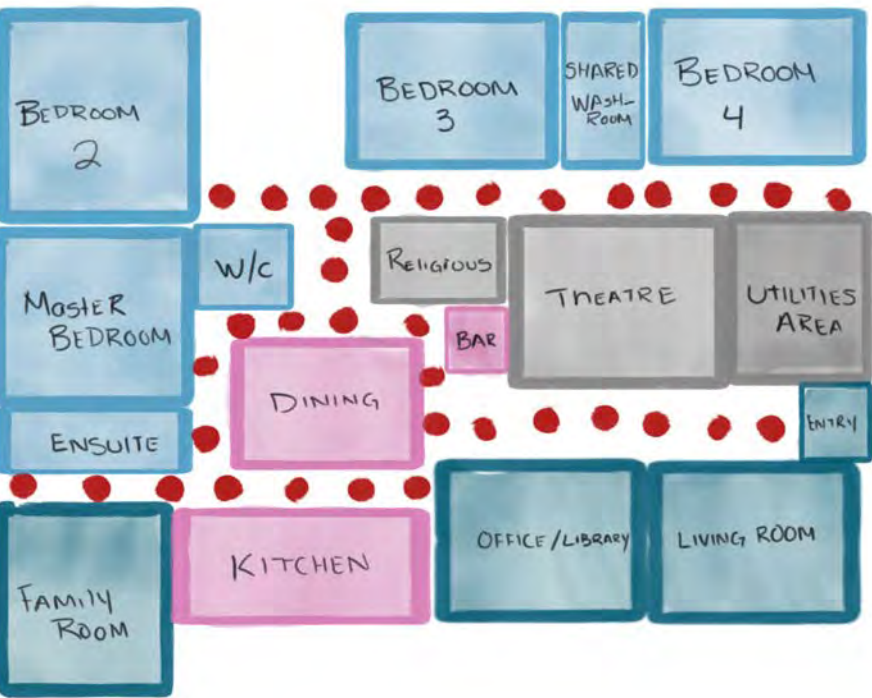
CLIENT PROFILE

The Jones's are an Italian catholic family of six, who have recently bought a new 3900 sq. ft. condo in Vancouver and would like me to design it according to their needs. Robert and Michael have two twin daughters, Elizabeth and Margaret, who both are in High school and there son Charles, who is in elementary. The whole family loves music and play all kinds of instruments, so they want the whole house sound proofed, would like a piano where the whole family can sit and enjoy. Praying and reading is a big part of their lives, so they want a private room where it's quite to pray and read, also where they can store all the books. They would also like display their art and pictures around the house. Lastly there dog snowball needs a bed in the laundry room with a spread bath area for him and storage for all there activity equipment.



CONCEPT

When talking about the concept for the jones, history and art comes to my mind. There Italian heritage and their passion for art and music brings out a lot of character out of each member’s personality. My concept wants balance the old art history of Italy and the her-itage aspects of the Vancouver building. Create a home with a positive space, where it’s easy to escape the stress of the world and be free mentally and physically. The home is a great space for family to bond, allowing a relaxed and open mind to take in the purest form of beauty known as family. I plan to incorporate the emotional attachment with religion and culture aspect in the design, to create a strong and traditional environment. Where the family can balance their life style with comfort and elegance. There emotional trust to rely on each other to succeed and flourish to grow in a healthy and vigorous way. To create an escape from the demands of an incredi-bly busy life. Where is would be calm, and quit and breezy. To take away the darkness by create natural light to inspirational belief.



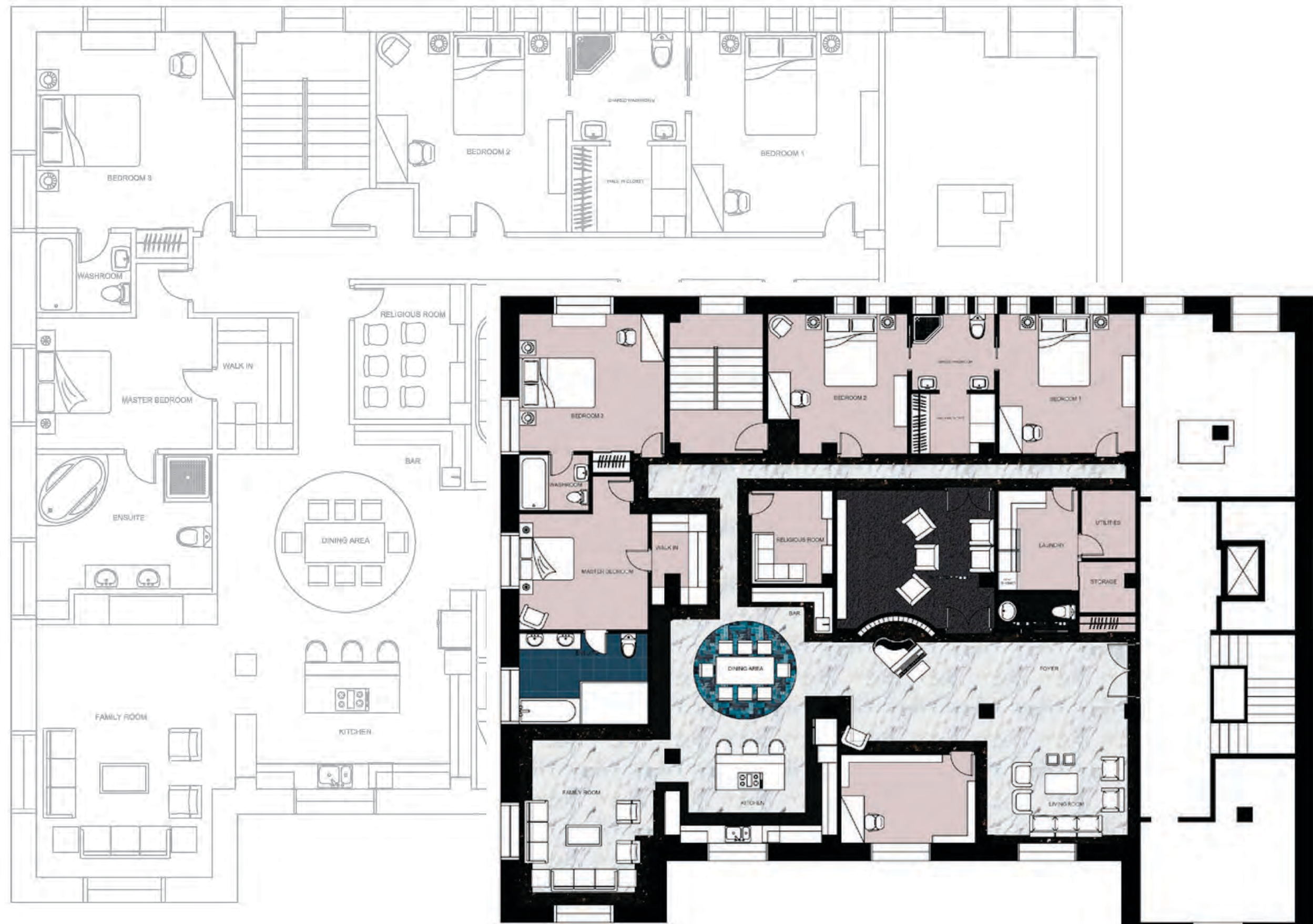
BLOCK DIAGRAM



ADJACENCY MATRIX

PRELIMINARY RESIDENTIAL PROGRAMMING			
SPACE LABEL	AREA SQ. FT.	NUMBER	OVERALL
FOYER/ ENTRY	100	1	100
POWDER ROOM	50	1	50
DINING ROOM	300	1	300
LIVING ROOM	150	1	150
FAMILY	300	1	300
KITCHEN	300	1	300
BEDROOM	160	3	480
BATHROOM	60	2	120
WALK IN CLOSET	60	1	60
MASTER BEDROOM	280	1	280
MASTER WIC	100	1	100
MASTER ENSUITE	120	1	120
LAUNDRY/STORAGE	100	1	100
MECHANICAL/ UTILITIES	40	1	40
THEATER/GAME	250	1	250
WINE CELLAR/ BAR	90	1	90
LIBRARY/OFFICE/RELIGIOUS	350	1	350
TOTAL			3190
AVAILABLE EXISTING SPACE			3900
CIRCULATION (20%)			780
USEABLE SPACE			3120

PROGRAMMING



FLOOR PLAN



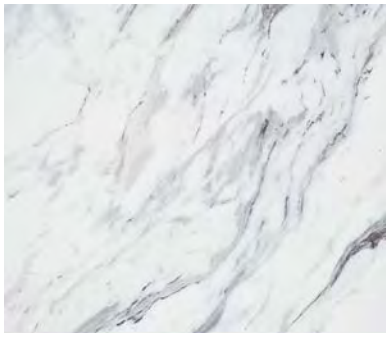
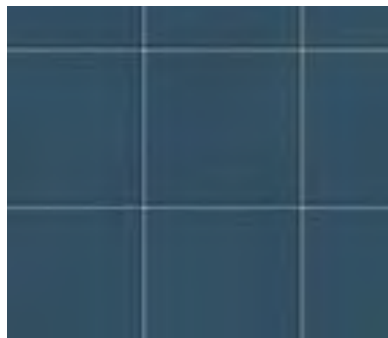
KITCHEN



KITCHEN



DINING



MATERIALS



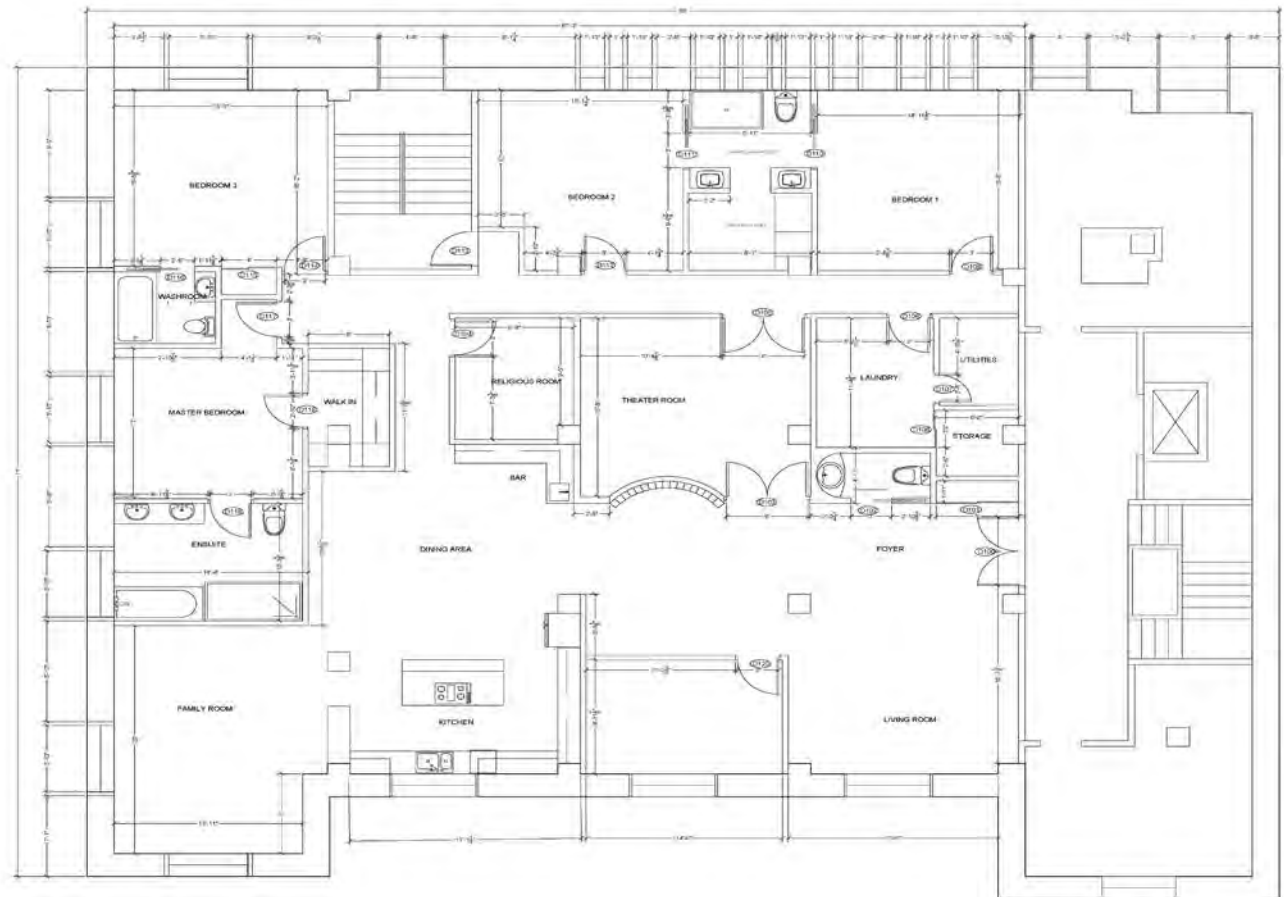
DINING



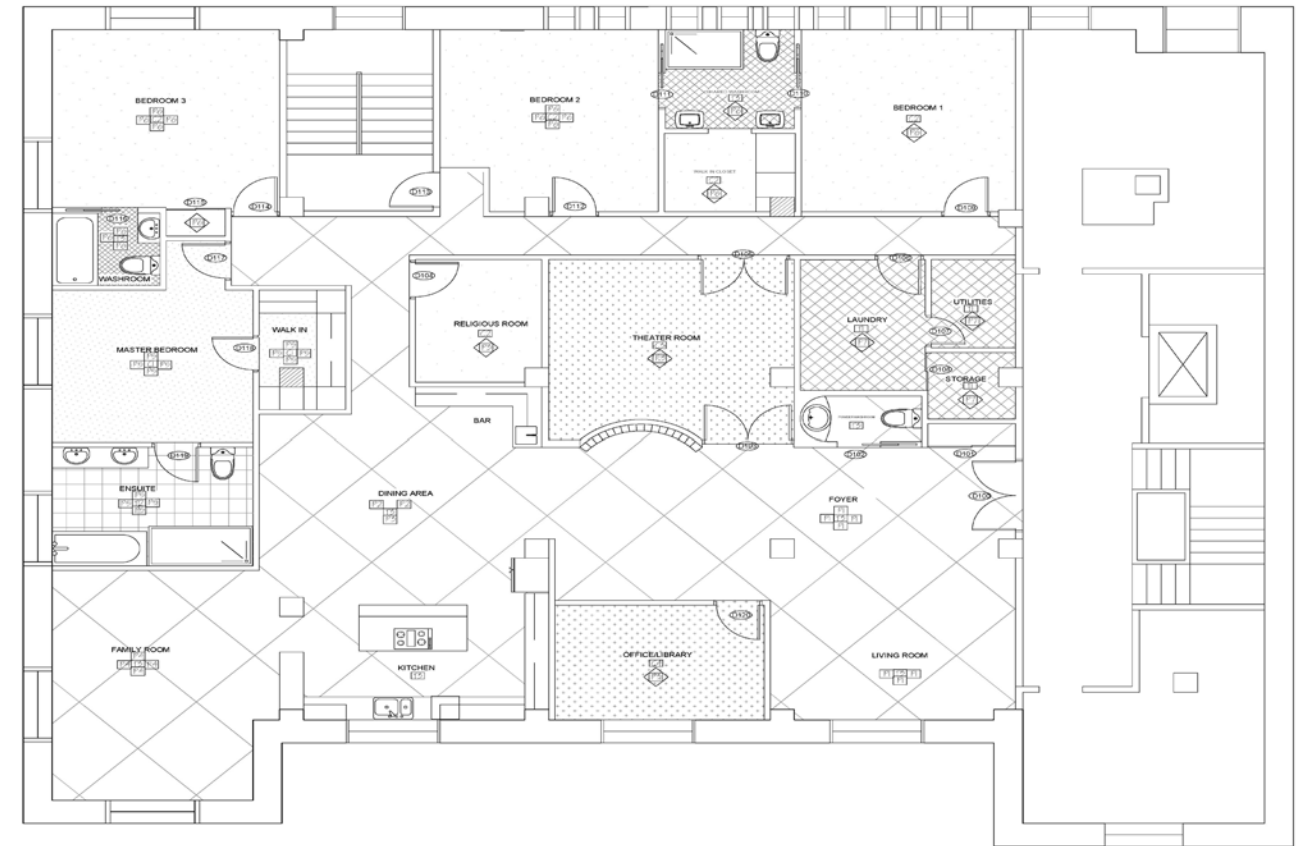
LIVING AREA



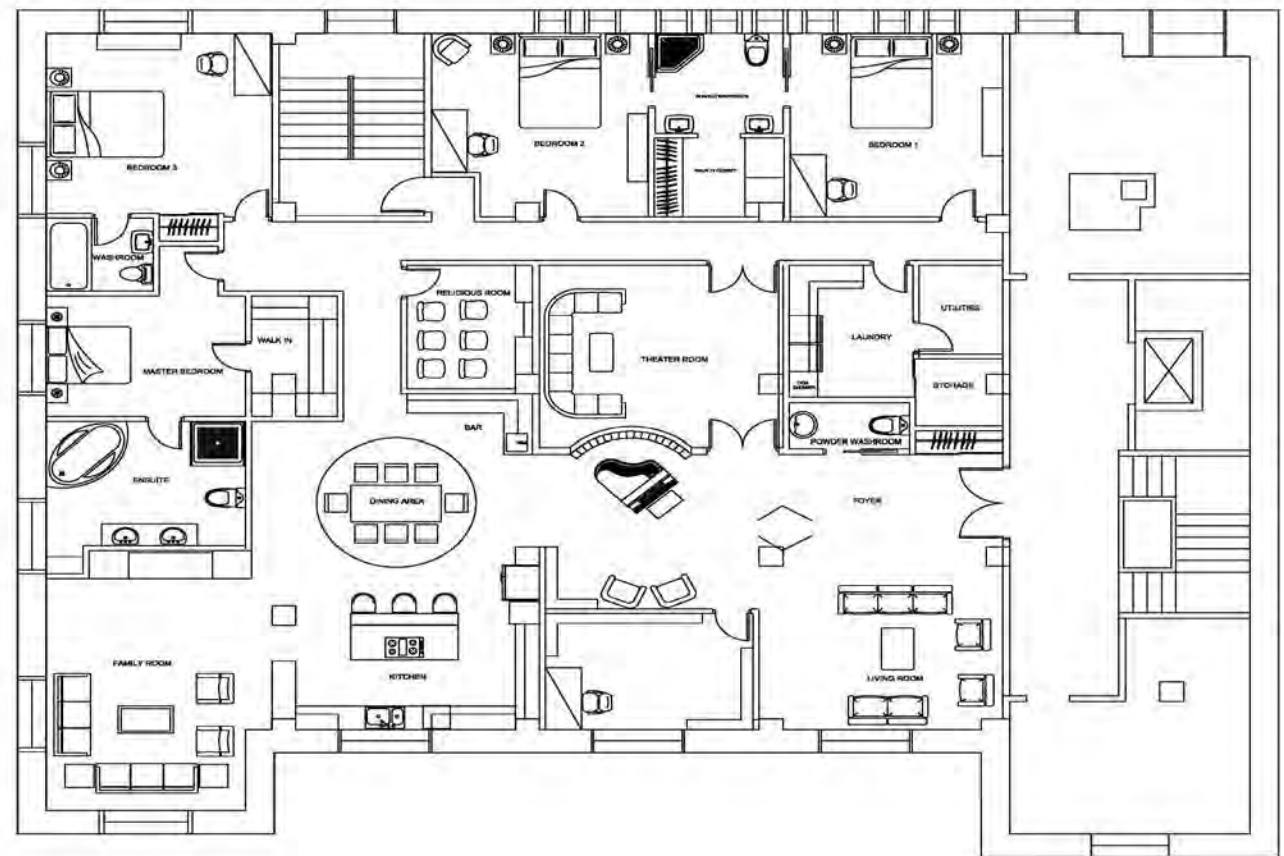
FAMILY AREA



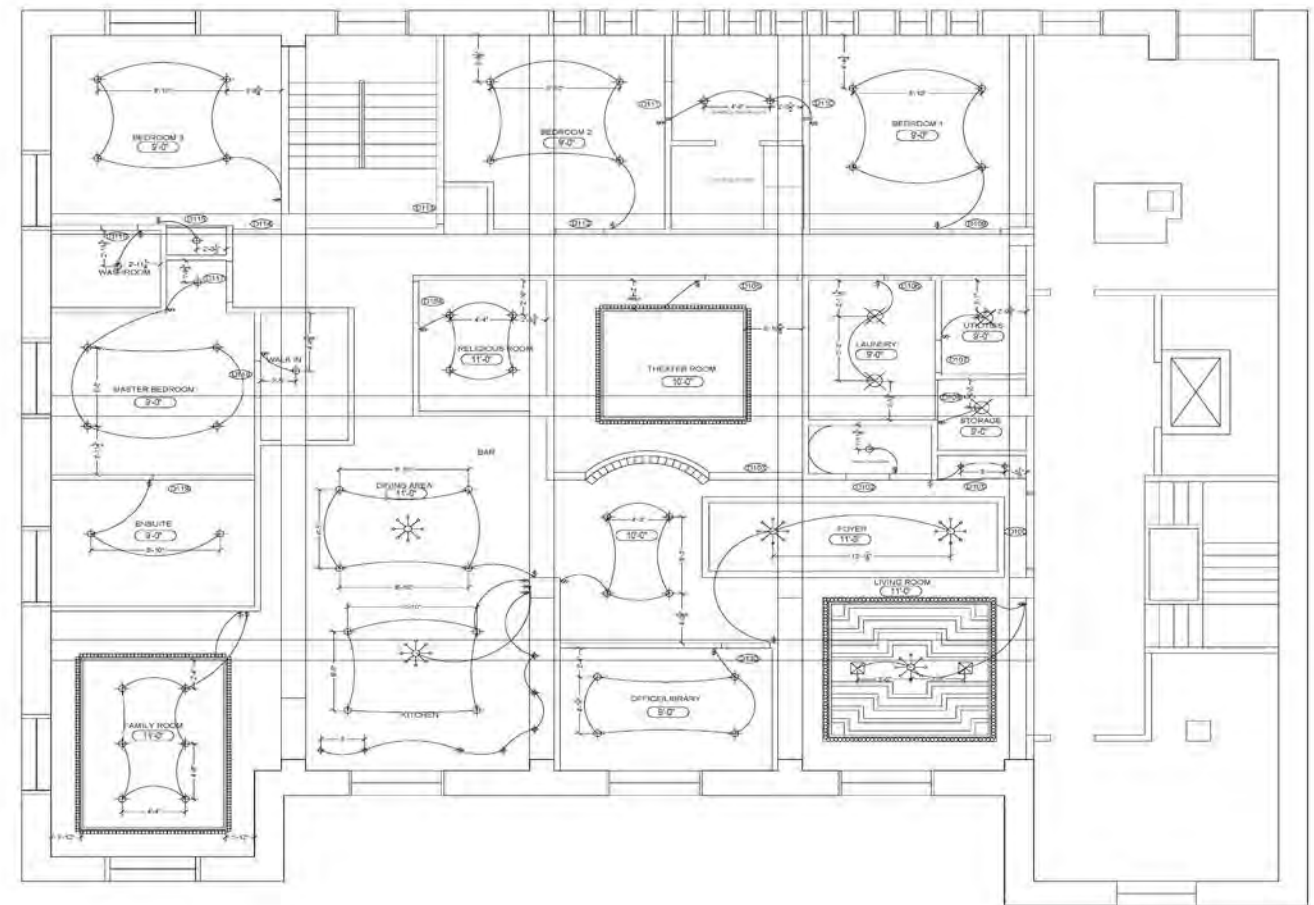
PARTITION PLAN



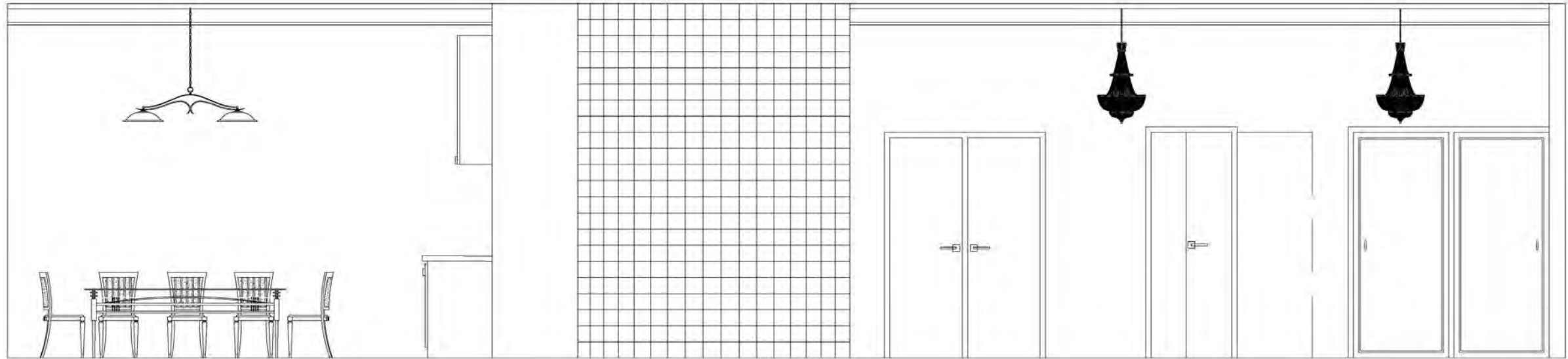
FINISHES PLAN



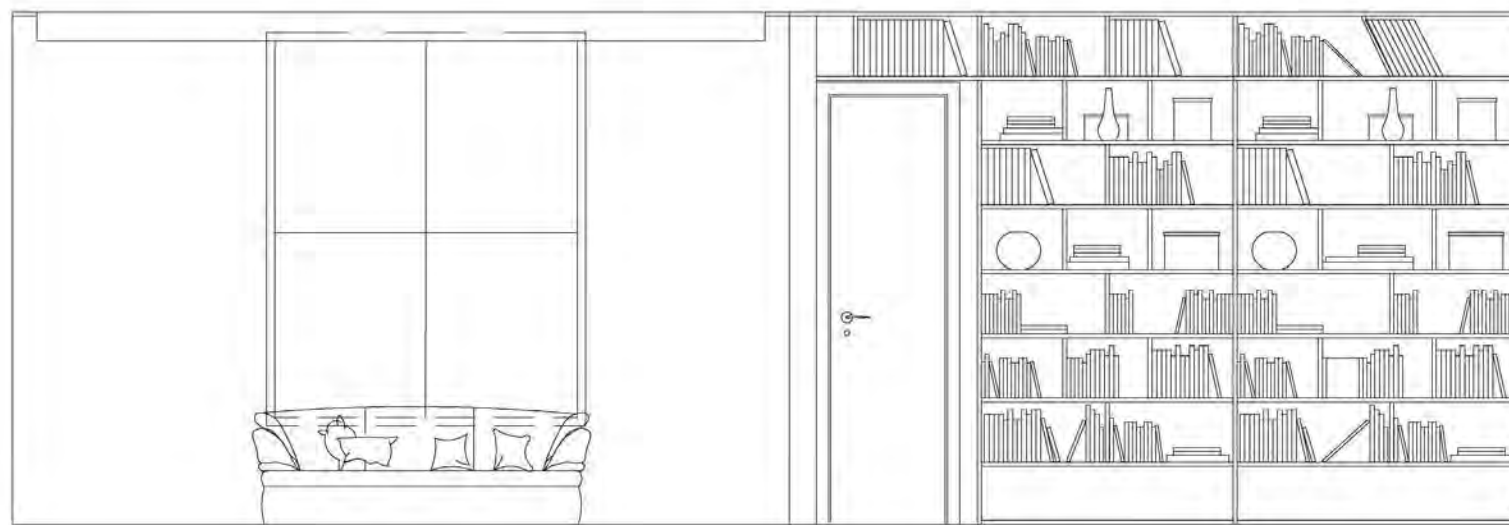
FURNITURE PLAN



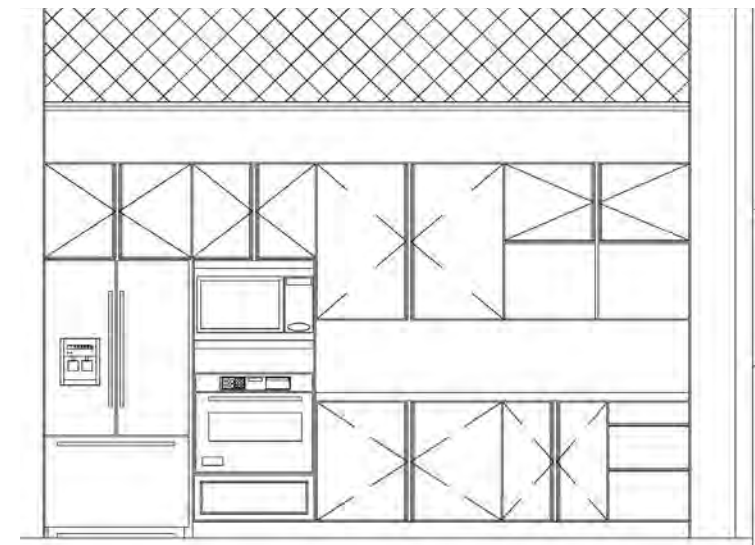
RCP PLAN



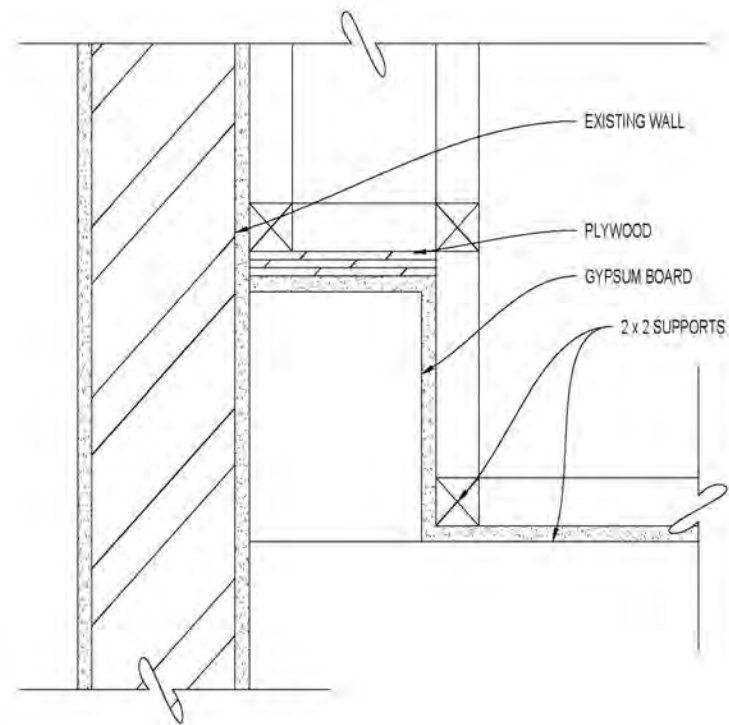
ELEVATION A-A



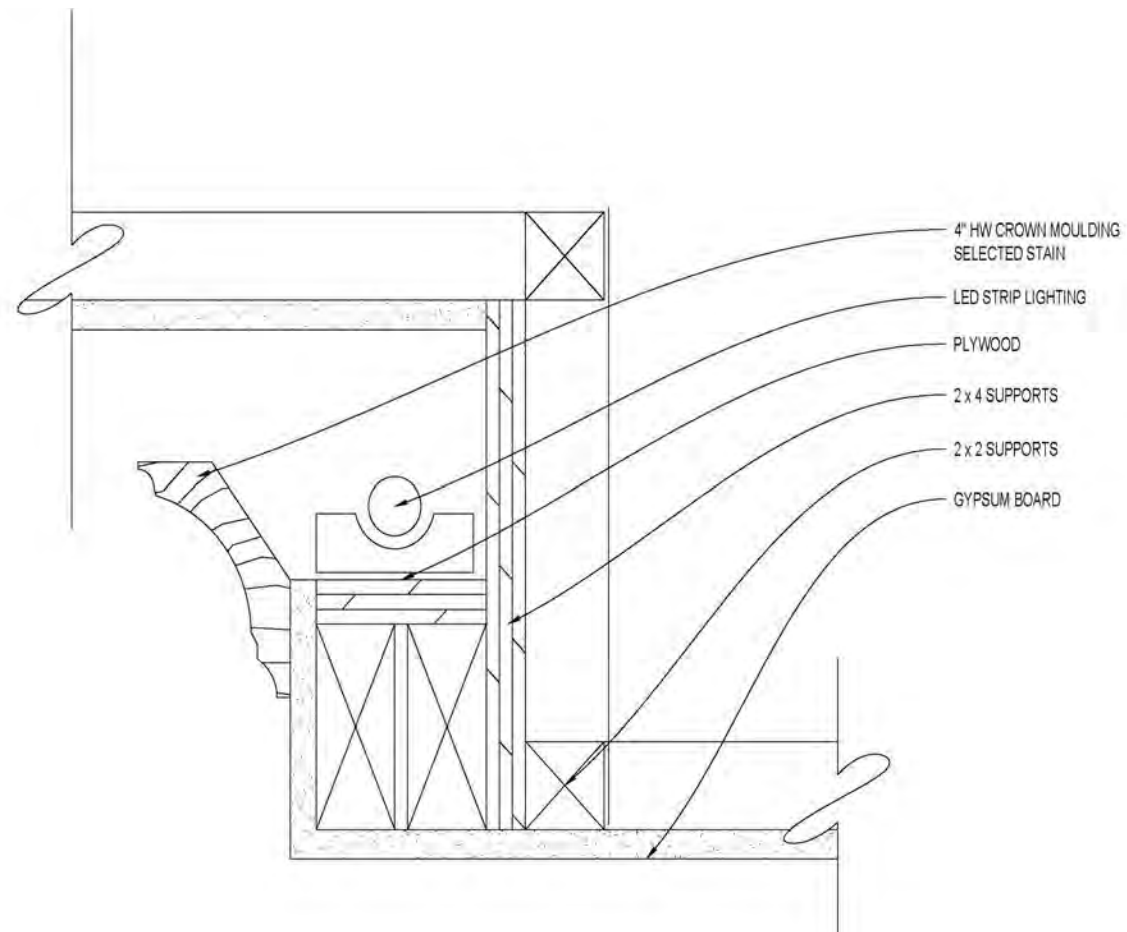
ELEVATION B-B



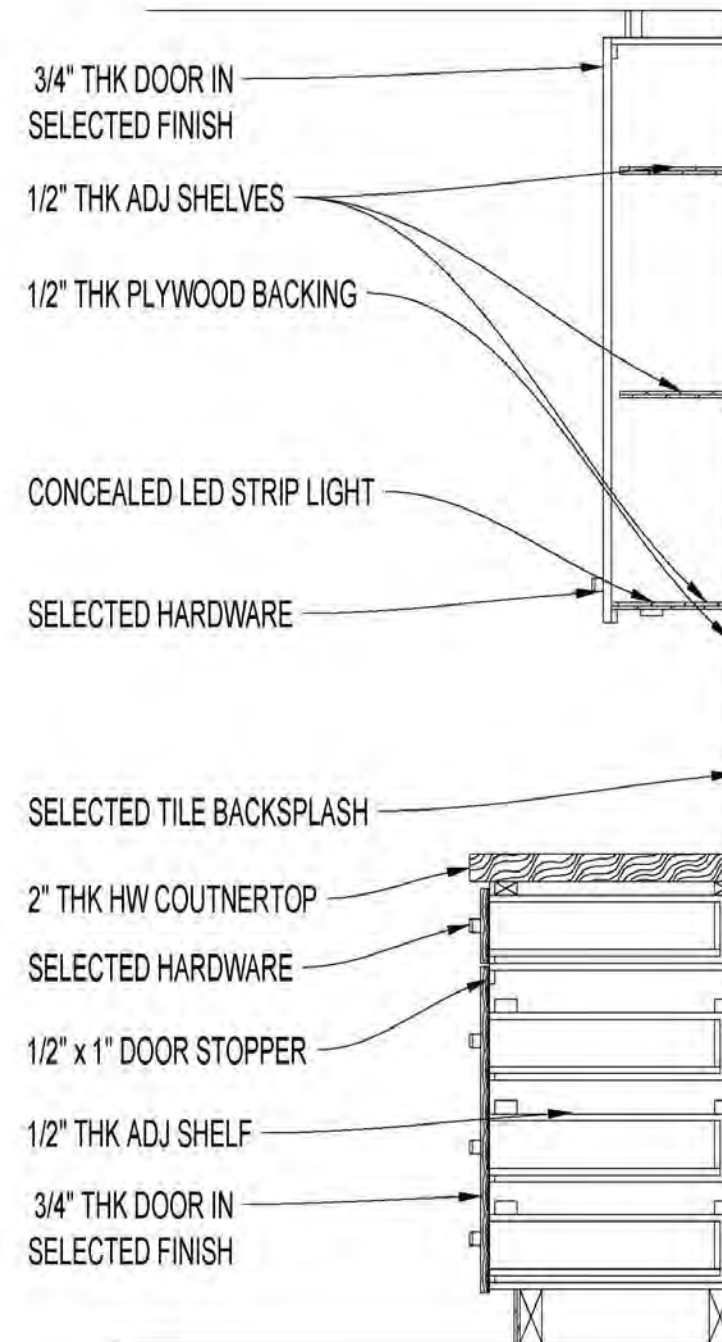
ELEVATION C-C



CEILING DETAIL



CEILING DETAIL



KITCHEN DETAIL

THANK YOU