
Isha Dang

Textile & apparel design
Maharaja Sayajirao University



Hand Roller Printing



Spring & Autumn

Green and red depict the colours of the seasons spring and autumn respectively.



Entrapped Nature

Checked orange colour represents trap while the print depicts the wild nature.



Soul & Skeleton

Mustard colour on the back depicts the soul and the dark green for skeleton.



The colours represents the vibes of dense vegetation of a jungle.

Block Printing



Elephant



Green & orange patterns

Tie & Dye



Pleated



Leheriya



Bandhani

Tie & Dye



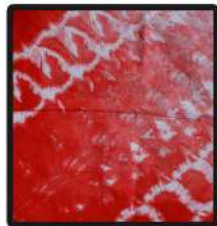
Wooden Block & Pin



Scrunch



Marbling



Rubberband Knotting

Illustrations

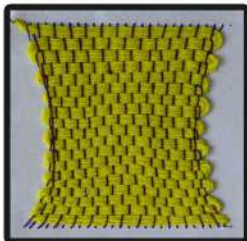


Pirate Themed Illustrations

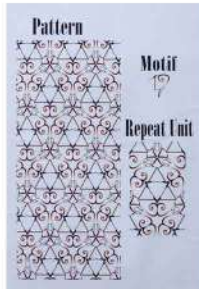
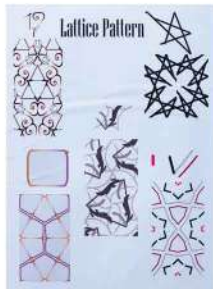
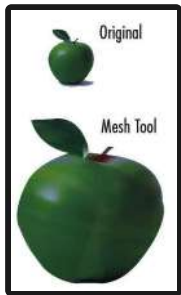
Surface Ornamentation



Weaving



Photoshop



Photoshop



Laughing Buddha



Mr. Momo



Pangaea

Theme: Pop Art

Photoshop



Madhatter & Maleficent



Pinna

Theme: Pop Art

Photoshop



Theme: Pop Art

Painting and Drawings



Painting and Drawings



Garments



Theme: Buddhism

Outfit 1

Garments



Theme: Buddhism

Outfit 2

Garments



Theme: Buddhism



Outfit 3

Garments



Theme: Buddhism

Outfit 4

Garments



Theme: Buddhism

Outfit 5