

SPORTWEAR

Through an WGSN concept I created a sportwear collection, with planning, technical sheets, prints etc.

SPORTWEAR- MOTOCROSS
COLLECTION

Planning

RESCAP

FLEECE
246 gr/m2
90% RA, 5% PO, 5% SP

SW002 050 - Light
SW002 001 - Electric Magenta
SW001 050 - Light
SW001 001 - Electric Magenta

SINGLE JERSEY
180 gr/m2
50% PES, 45% CO
4% EA

TS002 001 - Electric Magenta
TS002 153 - Black
TS001 050 - Light
TS001 153 - Black

SEAMLESS KNIT
180 gr/m2
94% PA, 6% EA

SL001 015 - Oxy Fire
SL001 081 - Ivy
SL001 001 - Electric Magenta
SL002 015 - Oxy Fire
SL002 081 - Ivy
SL002 001 - Electric Magenta

ELASTIC MICRO
260 gr/m2
95% PES, 5% EA

BR001 050 - Light
BR001 015 - Oxy fire
BR001 001 - Electric Magenta
MO001 050 - Light
MO001 015 - Oxy fire
MO001 001 - Electric Magenta
LG001 050 - Light
LG001 015 - Oxy fire
LG001 001 - Electric Magenta

D-SKIN
120 gr/m2
100% leather

CH001 001 - Electric Magenta
CH001 015 - Oxy fire
CH001 050 - Light
MO002 001 - Electric Magenta
MO002 050 - Light
MO002 015 - Oxy fire
LP001 001 - Electric Magenta
LP001 015 - Oxy fire
LP001 050 - Light

FBRAVE

FBRAVE

SUPPLIER: FBRAVE

DESIGNER: CARMEN MARTÍNEZ MUÑOZ

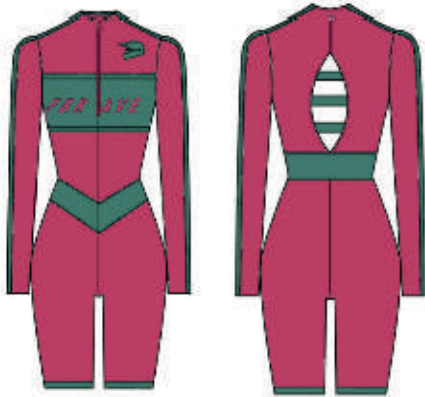
DATE: 2/12/2020

SEASON: F/W 2021

LINE: WOMAN

GARMENT: LYCRA MONO

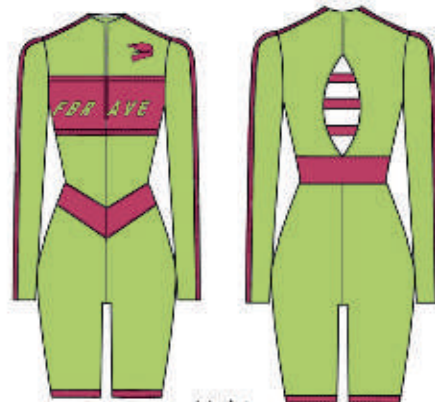
REFERENCE: MO001



Electric Magenta
001



Black
153



Light
050

F BRAVE

SUPPLIER: F BRAVE

DESIGNER: CARMEN MARTÍNEZ MUÑOZ


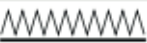
DATE: 2/12/2020

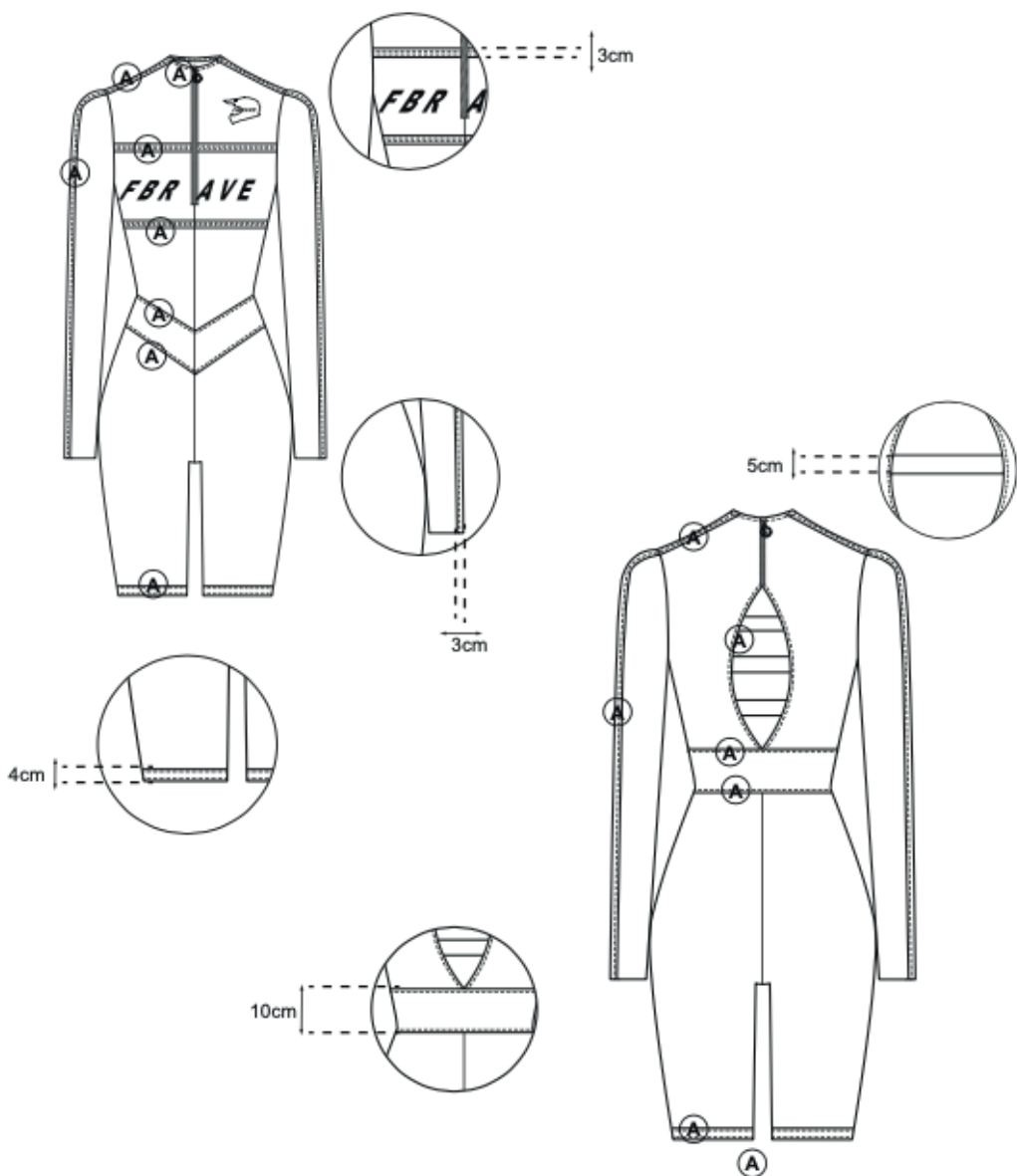
SEASON: F/W 2021

LINE: WOMAN

GARMENT: LYCRA MONO

REFERENCE: M0001

- (A)** -----
SINGLE NEEDLE
STITCHING
- (B)** -----
DOUBLE NEEDLE
STITCHING
- (C)** -----
TRIPLE NEEDLE
STITCHING
- (D)** -----
SUPERIMPOSED
SEAM
- (E)** 
FLAT LOCK
STITCHING
- (F)** 
ZIG ZAG
STITCHING



FBRAVE

SUPPLIER: FBRAVE

DESIGNER: CARMEN MARTÍNEZ MUÑOZ

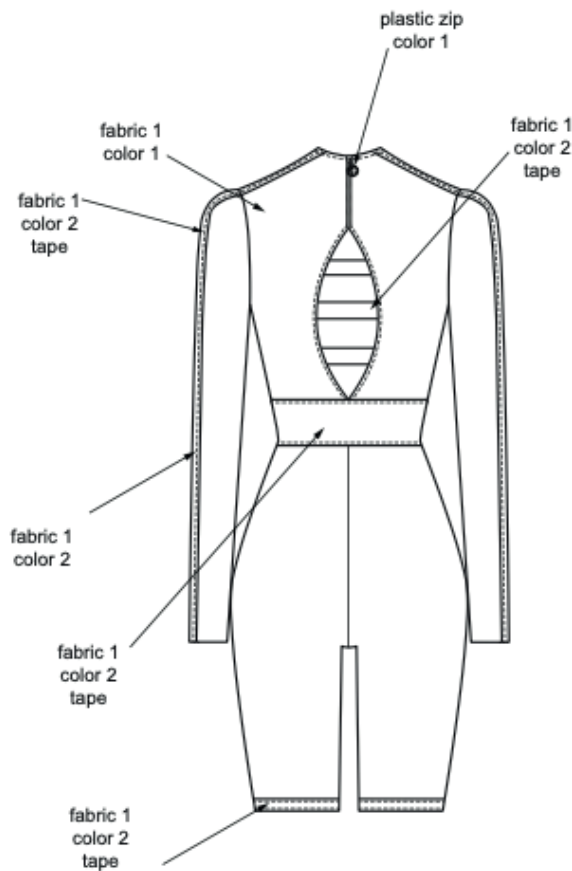
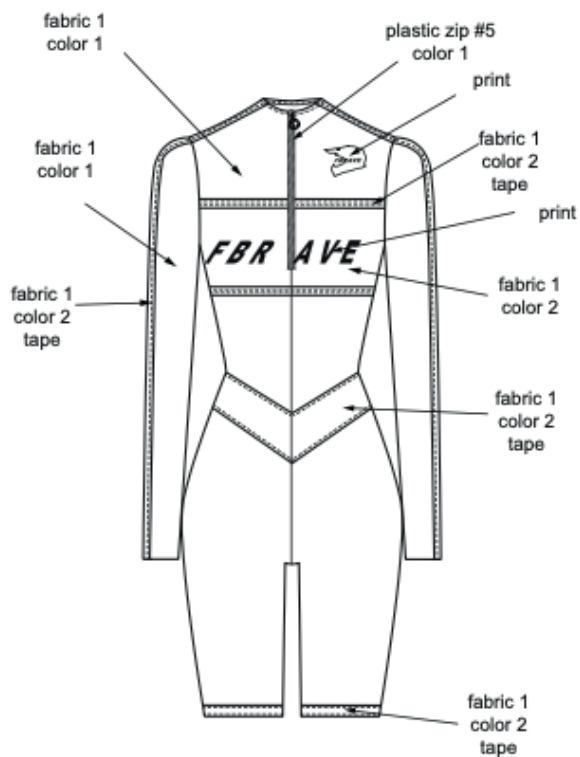
DATE: 2/12/2020

SEASON: F/W 2021

LINE: WOMAN

GARMENT: LYCRA MONO

REFERENCE: MO001



FBRAVE

SUPPLIER: FBRAVE

DESIGNER: CARMEN MARTÍNEZ MUÑOZ

DATE: 2/12/2020

SEASON: F/W 2021

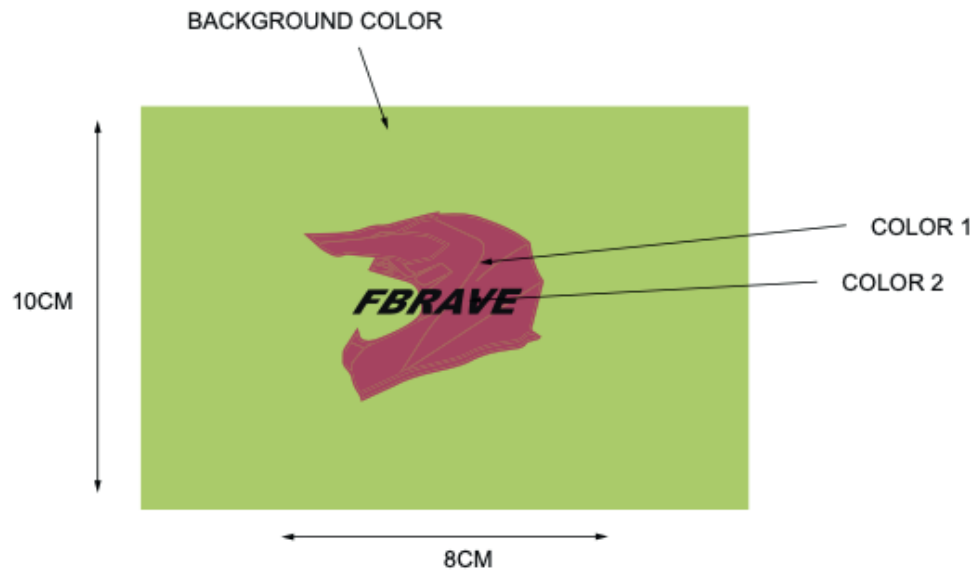
LINE: WOMAN

GARMENT: LYCRA MONO

REFERENCE: MO001

ARTWORK: FOIL PRINT

SIZE: IS NOT REAL SIZE. YOU MUST FOLLOW MEASURES. 10CMX8CM



CODE	001	153	050	
BACKGROUND COLOR	ELECTRIC MAGENTA 19-1860 tpx	BLACK 19-4004 tpx	LIGHT 13-0650 tpx	
COLOR 1	IVY 18-5424 tpx	OXY FIRE 17-1564 tpx	ELECTRIC MAGENTA 19-1860 tpx	
COLOR 2	BLACK 19-4004 tpx	BLACK 19-4004 tpx	BLACK 19-4004 tpx	
COLOR 3				

PLACEMENT: In the front side, 6 cm from the shoulder. 8 cm from the center.

FBRAVE

SUPPLIER: FBRAVE

DESIGNER: CARMEN MARTÍNEZ MUÑOZ

DATE: 2/12/2020

SEASON: F/W 2021

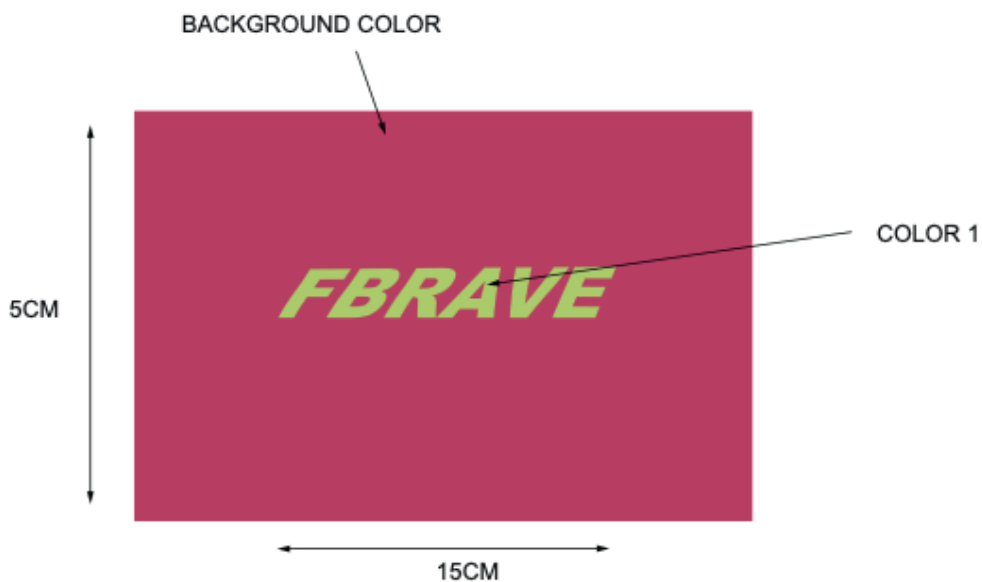
LINE: WOMAN

GARMENT: LYCRA MONO

REFERENCE: MO001

ARTWORK: FOIL PRINT

SIZE: IS NOT REAL SIZE. YOU MUST FOLLOW MEASURES. 5CMX15CM



CODE	001	153	050	
BACKGROUND COLOR	IVY 18-5424 tpx	OXY FIRE 17-1564 tpx	ELECTRIC MAGENTA 19-1860 tpx	
COLOR 1	ELECTRIC MAGENTA 19-1860 tpx	BLACK 19-4004 tpx	LIGHT 13-0650 tpx	
COLOR 2				
COLOR 3				
				PLACEMENT: In the center front. 15 cm from the shoulder.

FBRAVE

SUPPLIER: FBRAVE

DESIGNER: CARMEN MARTÍNEZ MUÑOZ

DATE: 2/12/2020

SEASON: F/W 2021

LINE: WOMAN

GARMENT: LYCRA MONO

REFERENCE: MO001

 PROTO SAMPLE COLOR: 050 -Light
 SALES SAMPLE COLOR: 050-Light
 SAMPLE SIZE: M
 SIZES: S-XXL

FABRIC:

fabric1: elastic micro, 160 gr/m2

COMPOSITION:

fabric1: 95% PES, 5% EA

FINISHES:

COLOR WAYS CODE: 001- ELECTRIC MAGENTA/ 153 - BLACK/ 050 - LIGHT

CODE	COLOR 1	COLOR 2	
001	ELECTRIC MAGENTA 19-1860 tpx	IVY 18-5424 tpx	
153	BLACK 19-4004 tpx	OXY FIRE 17-1564 tpx	
050	LIGHT 13-0650 tpx	ELECTRIC MAGENTA 19-1860 tpx	