

03

RESIDENTIAL DESIGN





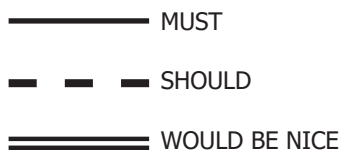
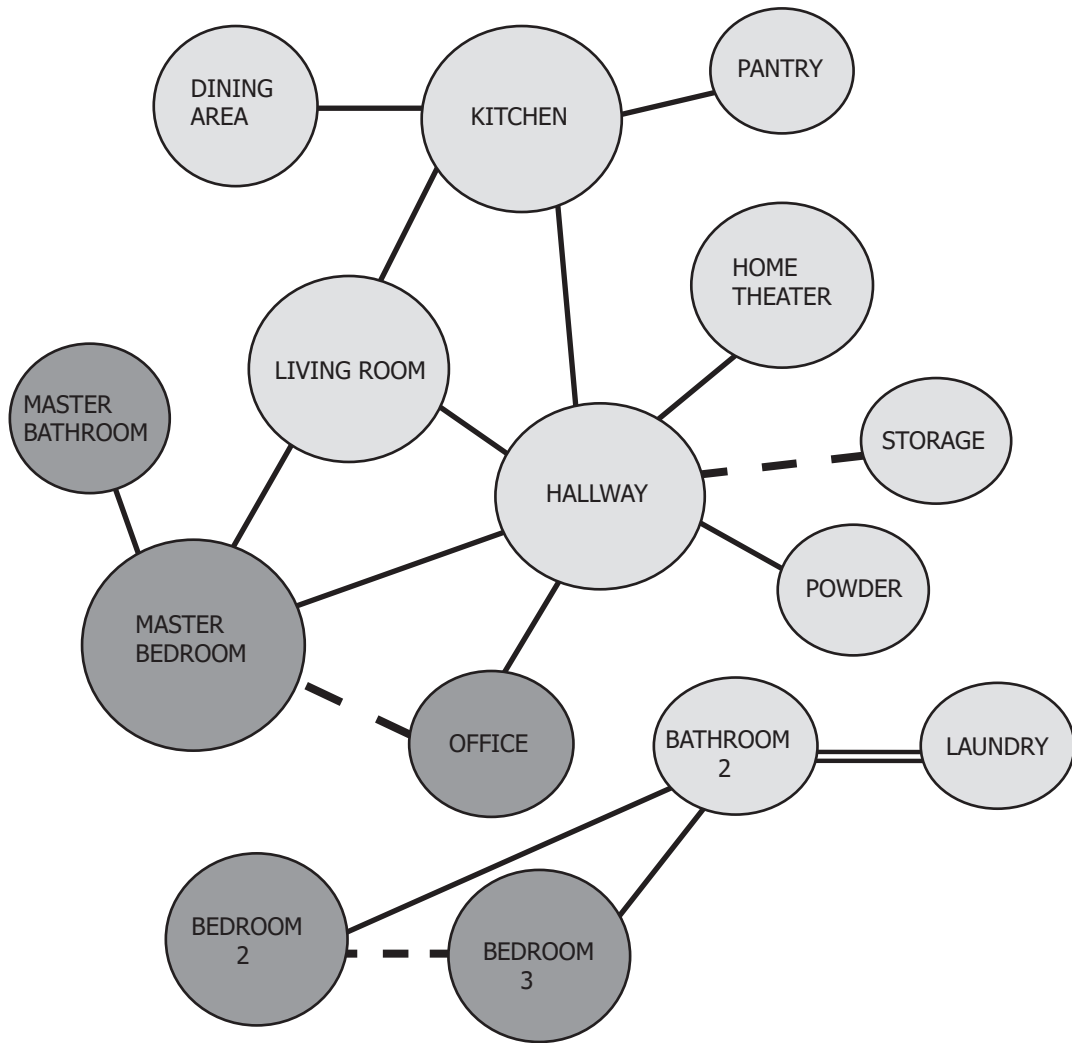


DESIGN CONCEPT

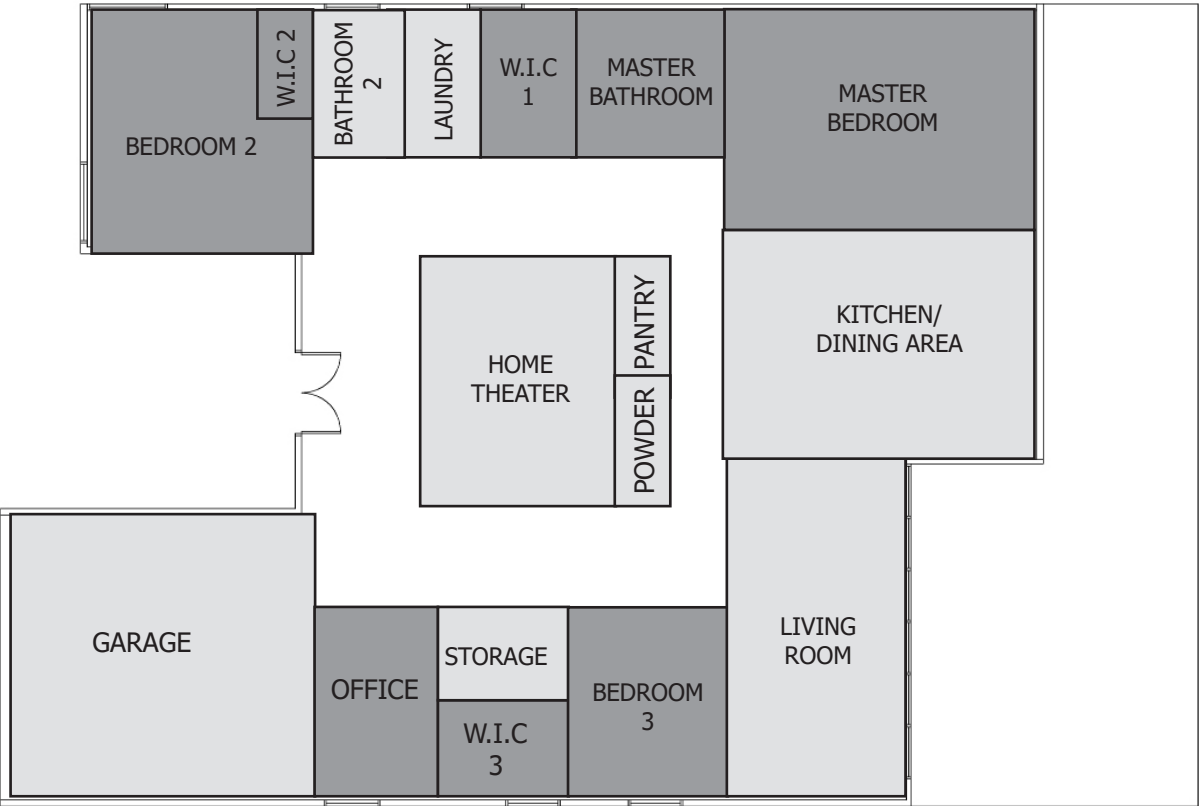
Inspired by the traditional Victorian style interior design with a modern twist to create a casual, elegant space. This design will use some of the signature elements of Victorian style such as crown and wall molding...

To break down the ancient Victorian look, we will find a sleek of marble walls, contemporary furniture, and gorgeous chandeliers. The neutral color scheme will help to reduce the overlook of those textural elements, it also helps to create a welcoming and cozy interior. In contrast with the vibrating life, it is important to create calm spaces where luxury and rigor coexist without ostentation. I want to introduce the "slow living" definition to occupants. It's when they enjoy every minute, every detail, every bit of art in their house.

BUBBLE DIAGRAM



BLOCK PLAN



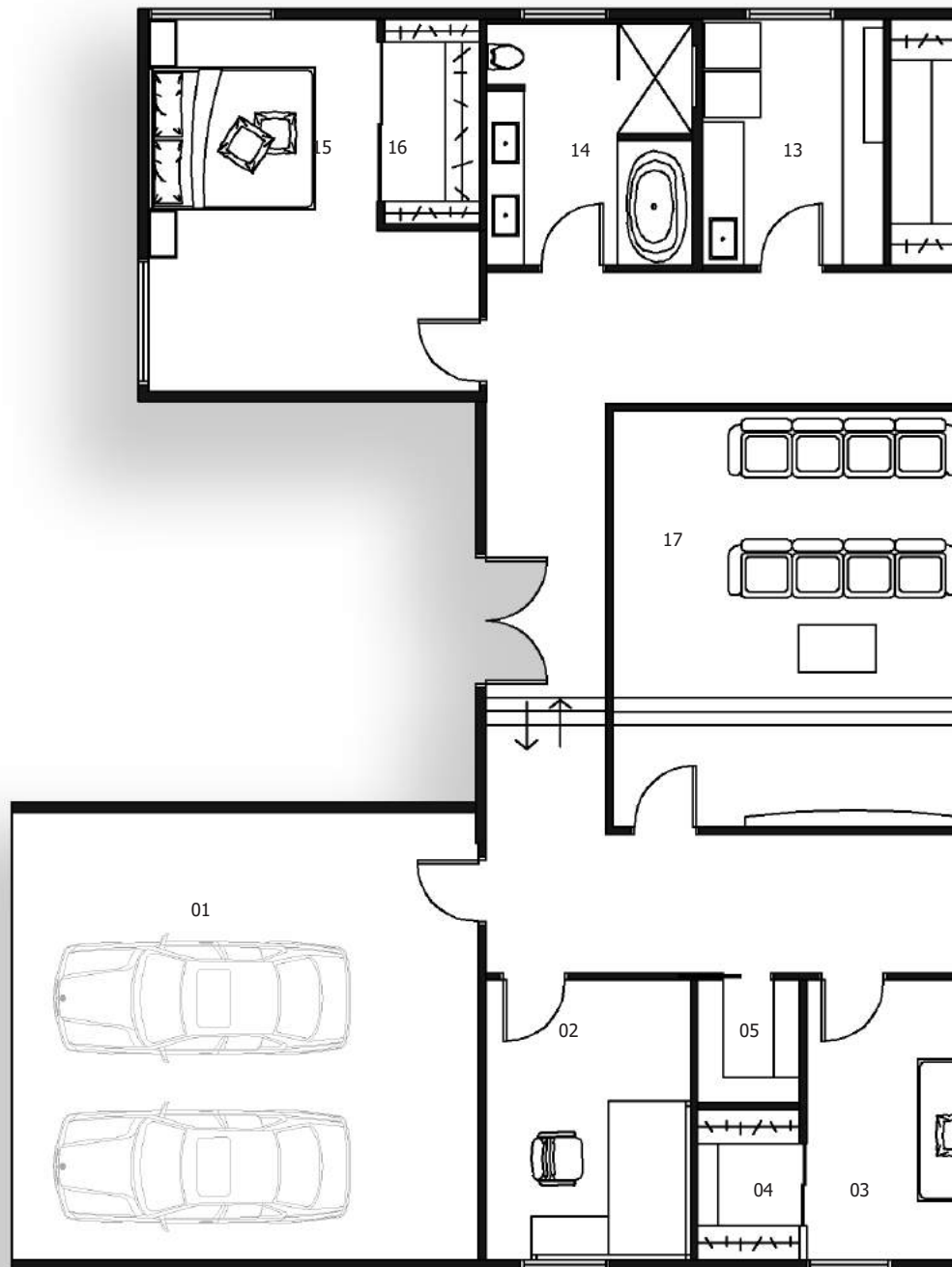
 PUBLIC

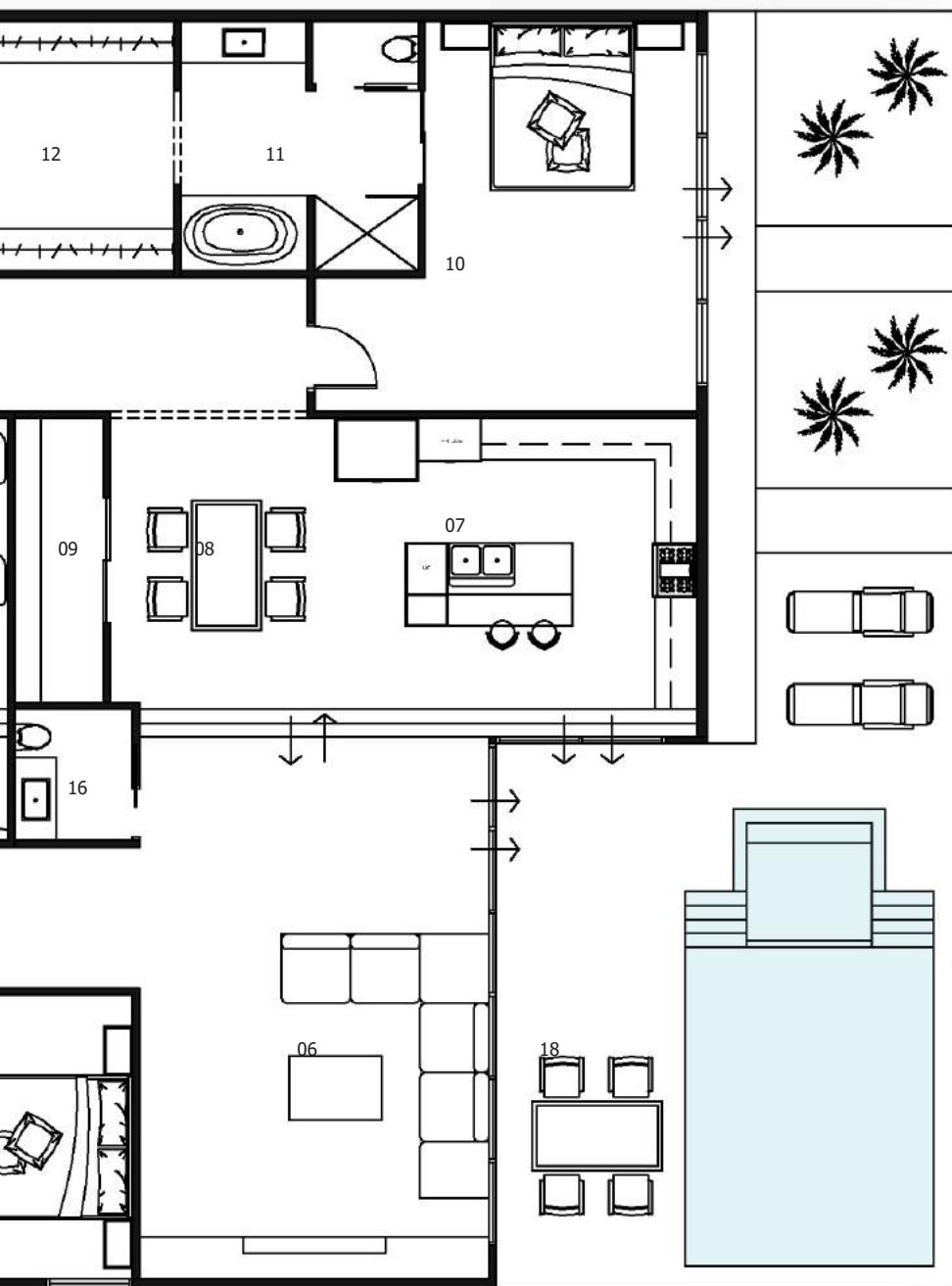
 PRIVATE

FLOOR PLAN

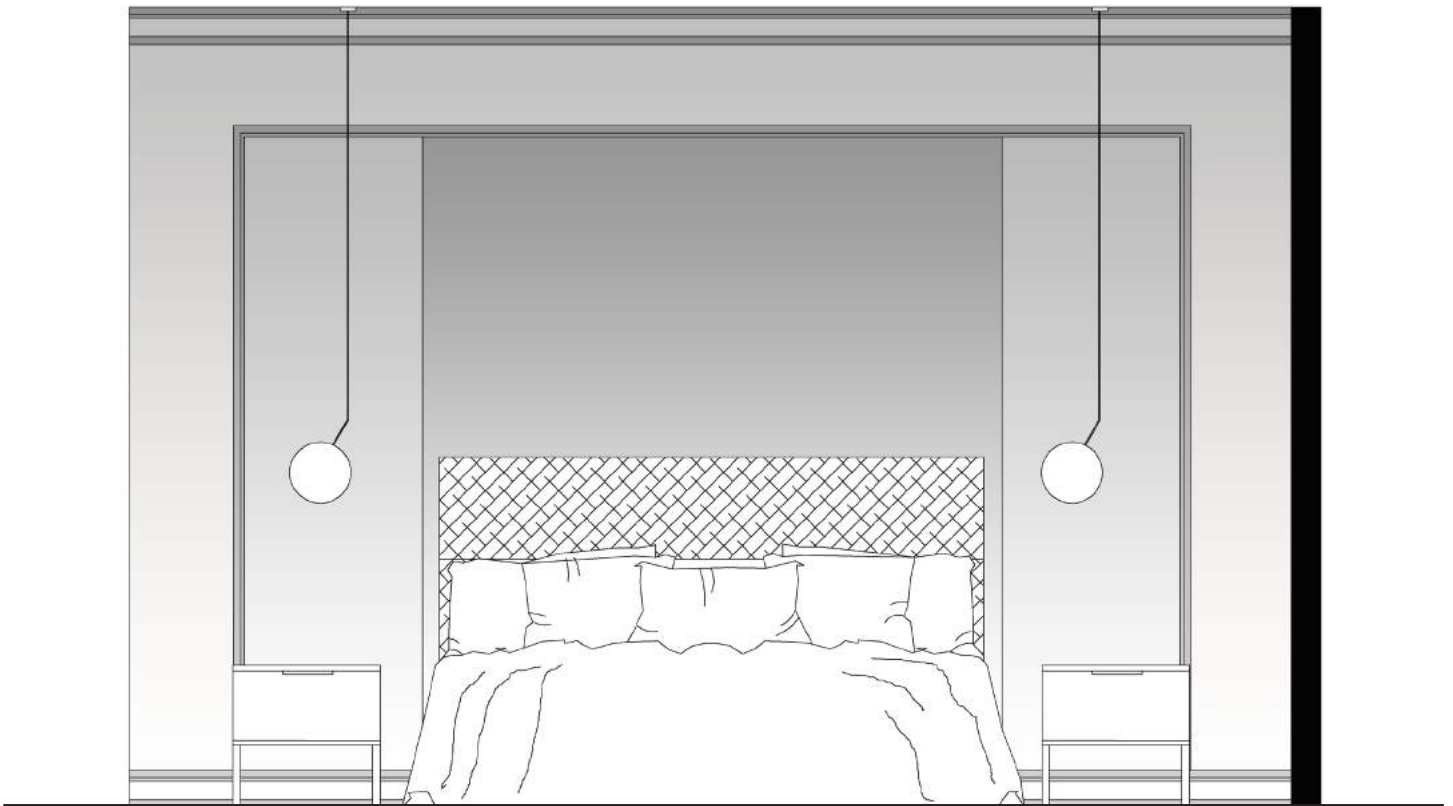
LEGEND

- 01 GARAGE
- 02 HOME OFFICE
- 03 BEDROOM 2
- 04 W.I.C 2
- 05 STORAGE
- 06 LIVING ROOM
- 07 KITCHEN
- 08 DINING AREA
- 09 PANTRY
- 10 MASTER BEDROOM
- 11 MASTER BATHROOM
- 12 W.I.C 1
- 13 LAUNDRY
- 14 BATHROOM 1
- 15 BEDROOM 3
- 16 W.I.C 3
- 17 HOME THEATER
- 18 DECK

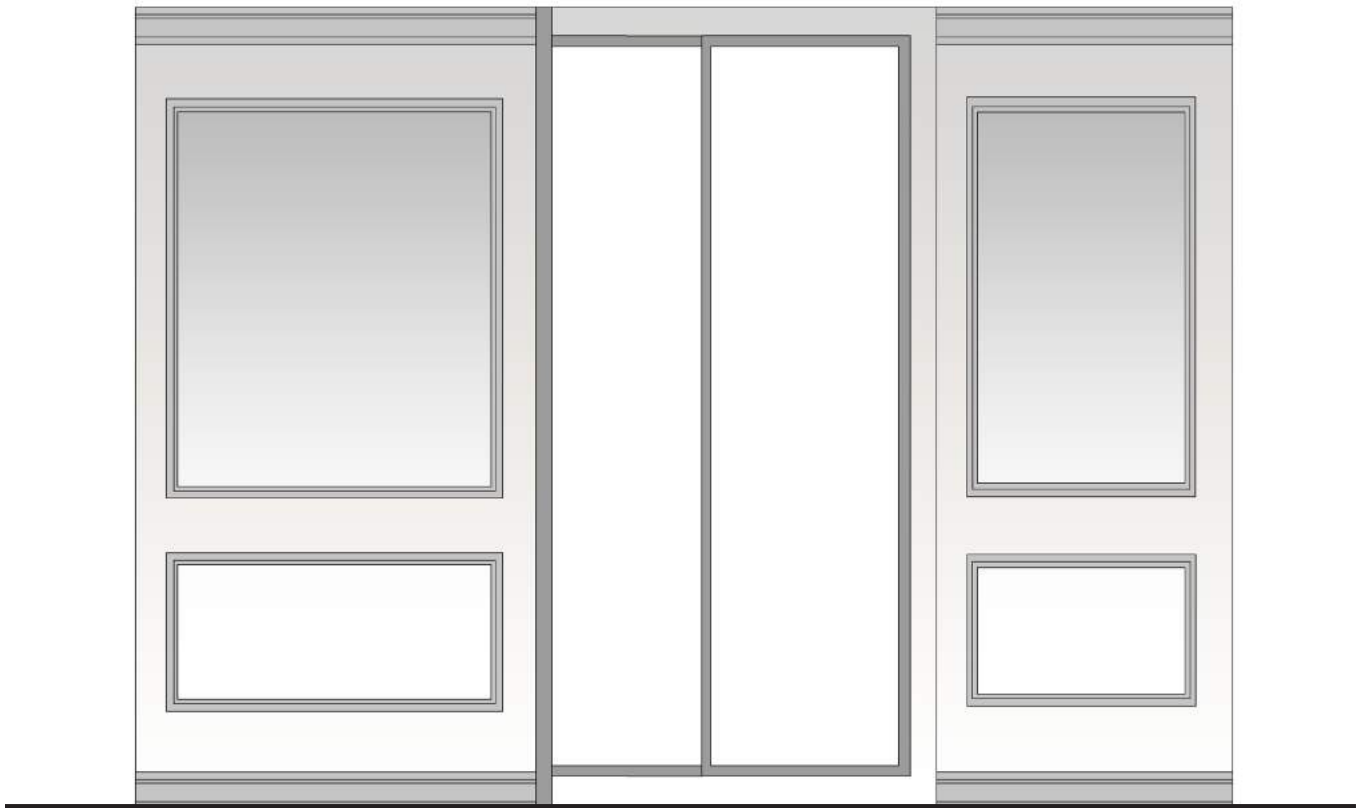




ELEVATIONS/ SECTIONS



Master Bedroom Elevation 1



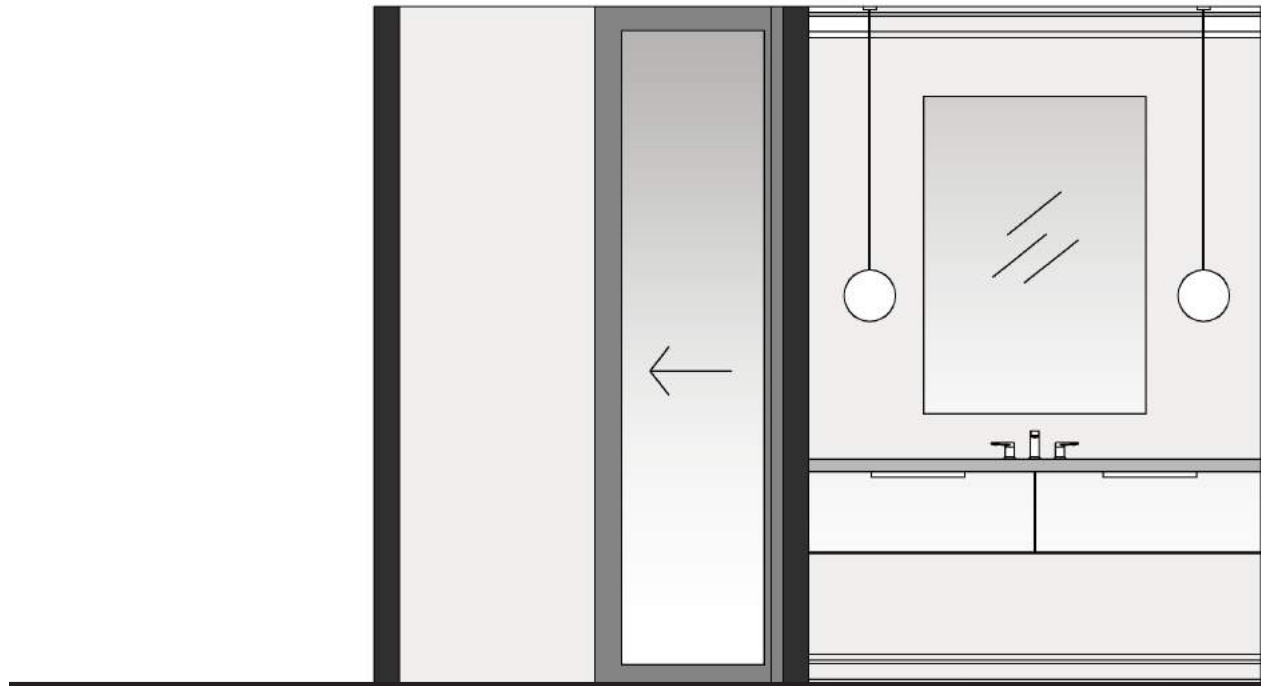
Master Bedroom Elevation 2



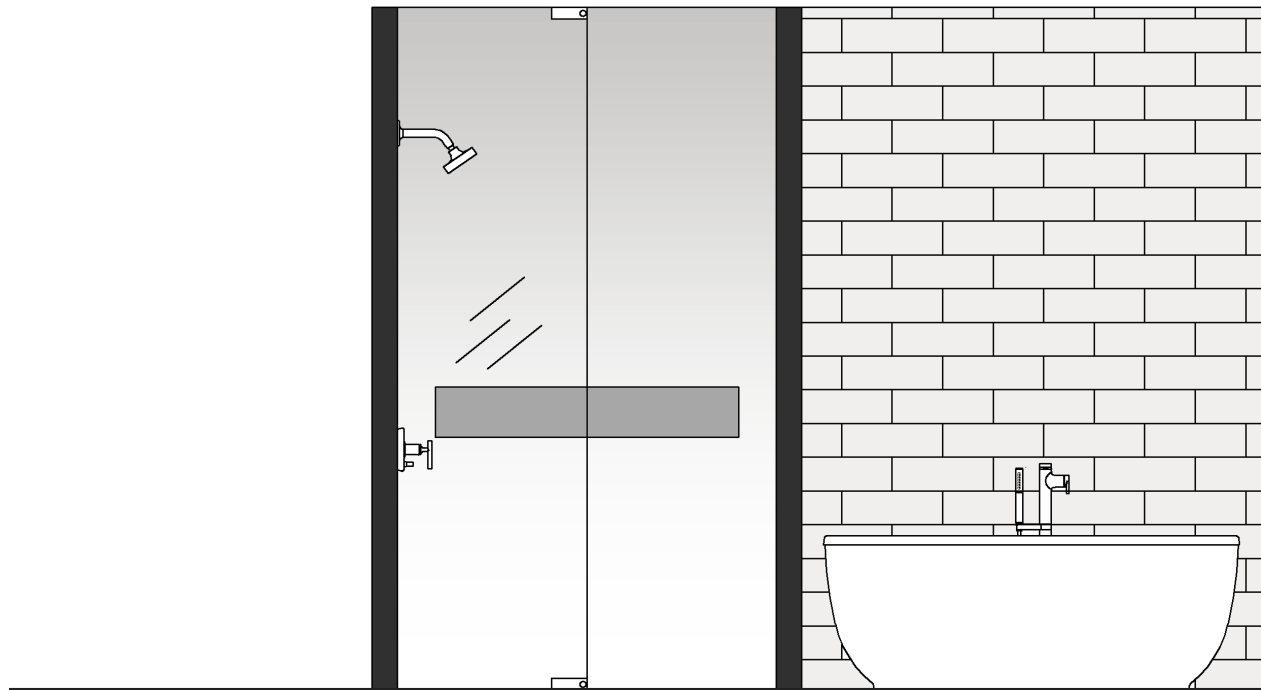
Kitchen Elevation 1



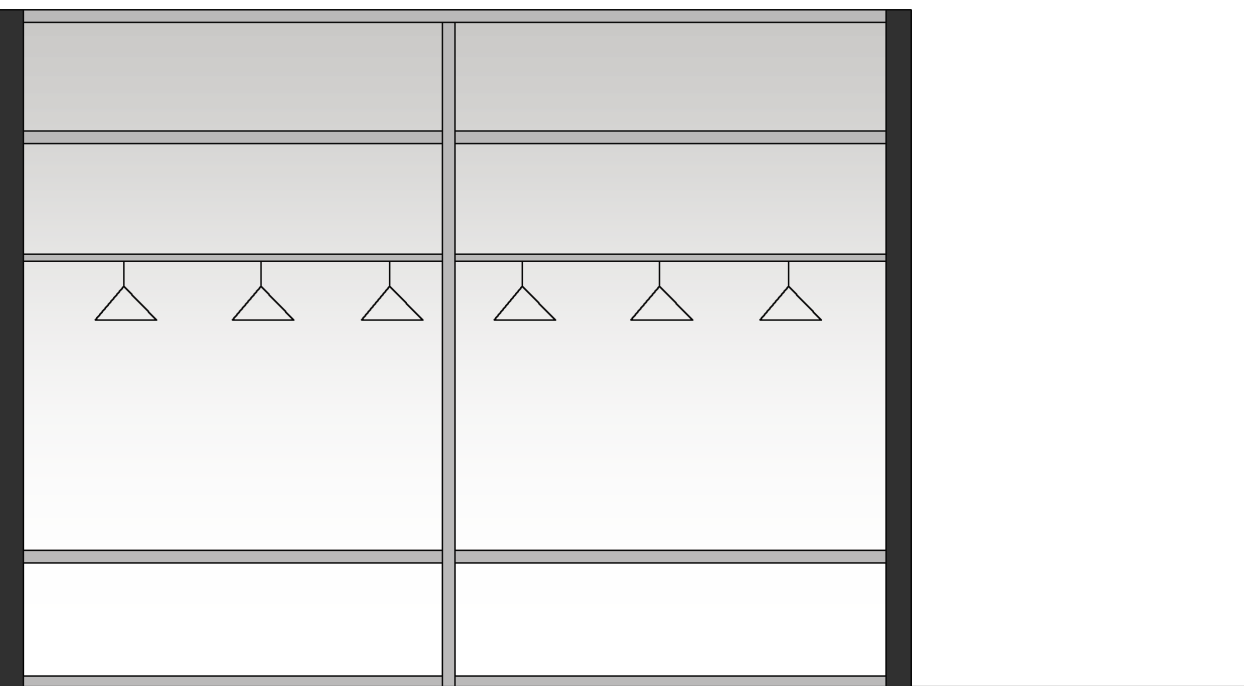
Kitchen Elevation 2



Master Bathroom & W.I.C Elevation 1



Master Bathroom & W.I.C Elevation 2

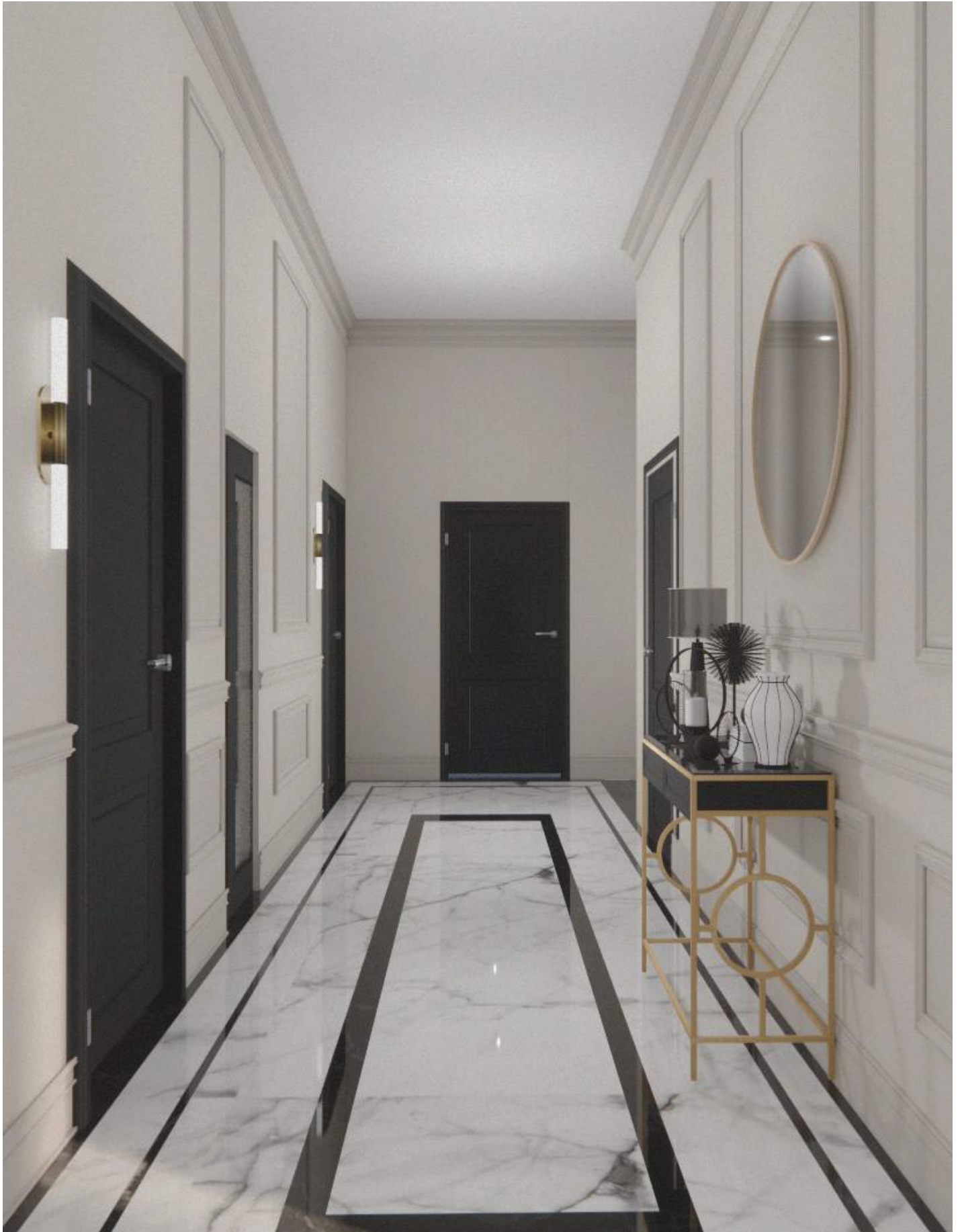




Kitchen Design View 1



Kitchen Design View 2



Hallway Design View



Bedroom Design View



Living Room Design



Walk-in Closet Design