

Sonia Cuesta

BARCELONA

Final collection.....	3
Technical sheets and scandal.....	26
Ecodesign projects.....	35

Final collection

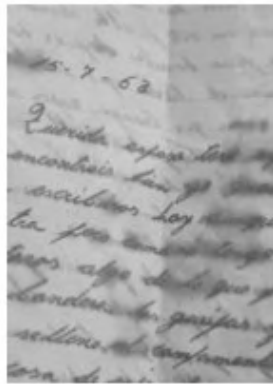
The passage of time life represented through the most important moments of a person.

Life has hard but also sweet moments.
I have represented through my family history.

Sweet moments like love and passion but also difficult moments like emigration, loss or death.

Handmade.

origen and passion



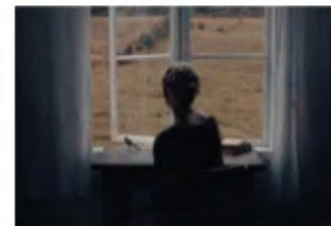
emigration



love

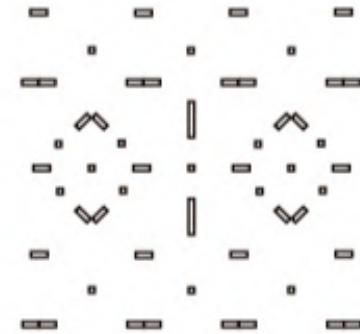


loss



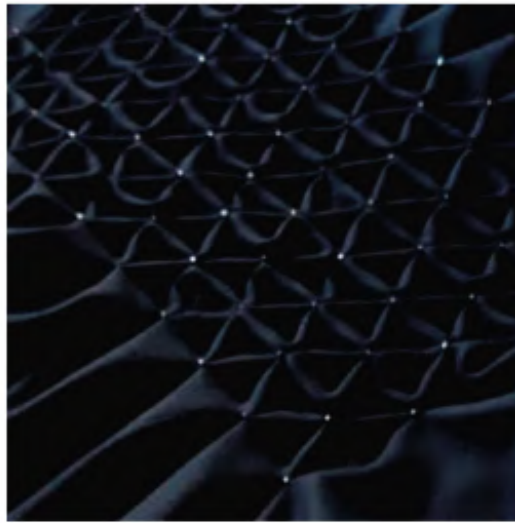
and forgetting

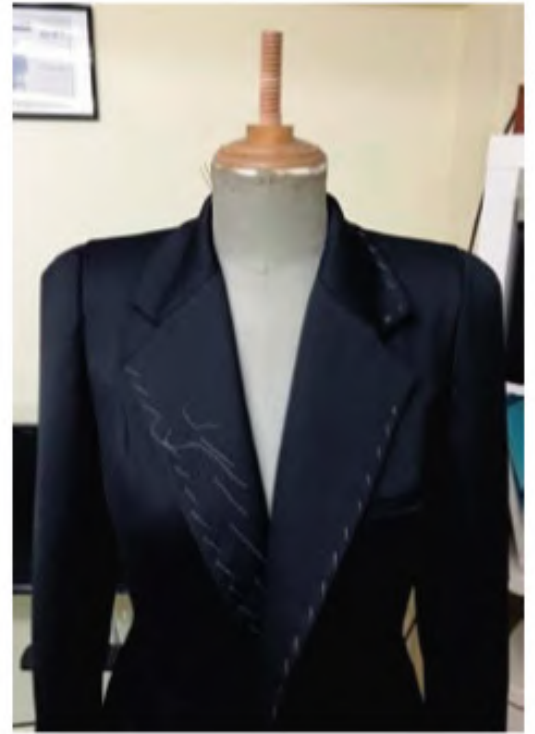




Moroccan-inspired embroidery

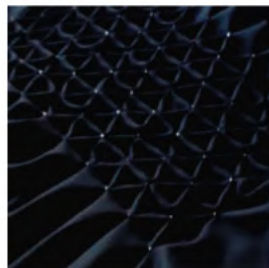








fabric made with
vintage lace



smock

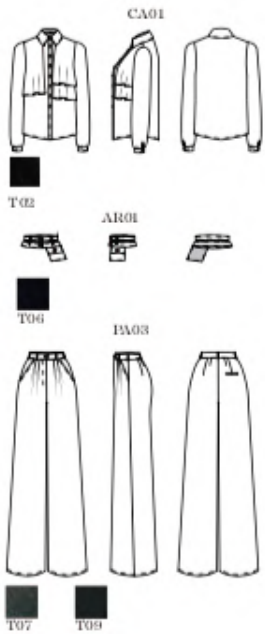
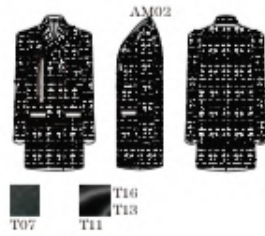


embroidery

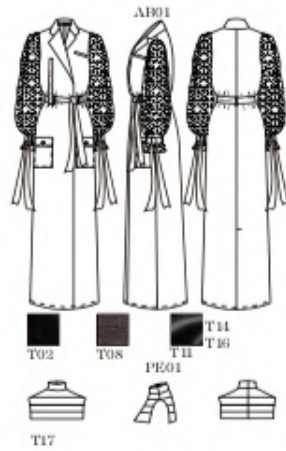




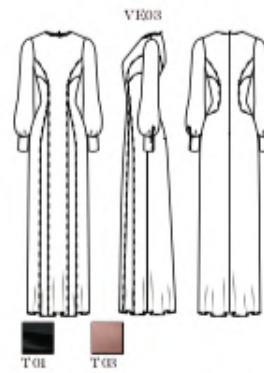
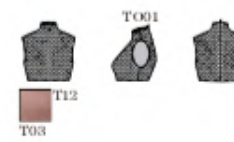
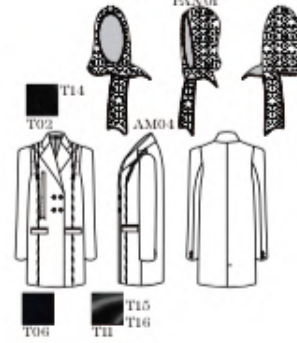
LOOK1



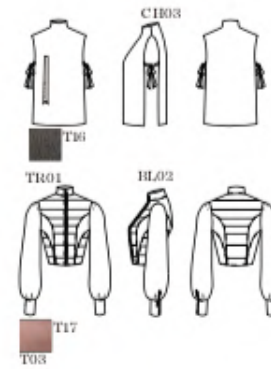
LOOK2



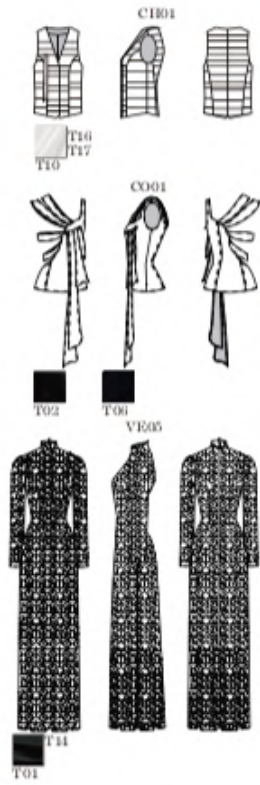
LOOK3
PAN01



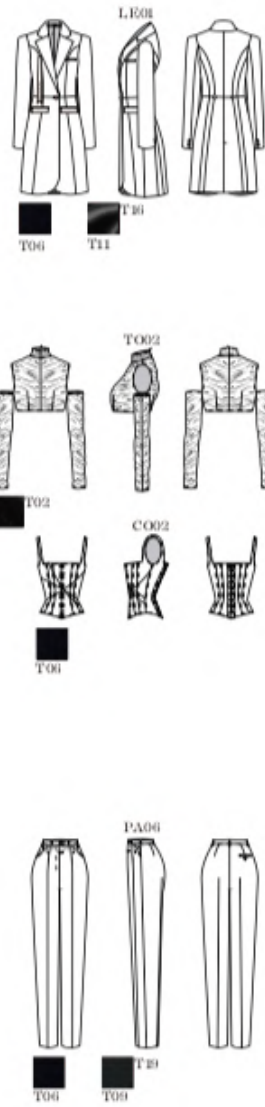
LOOK4
PA N01



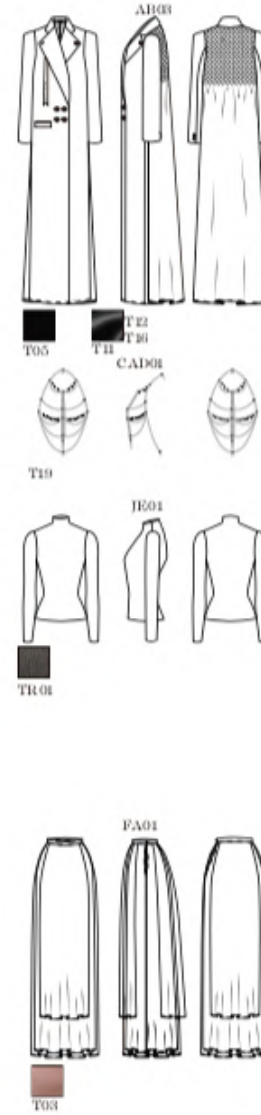
LOOK5



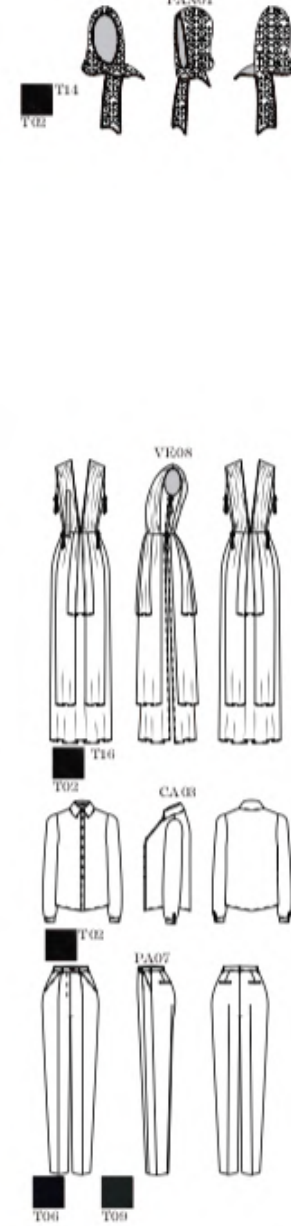
LOOK6



LOOK7

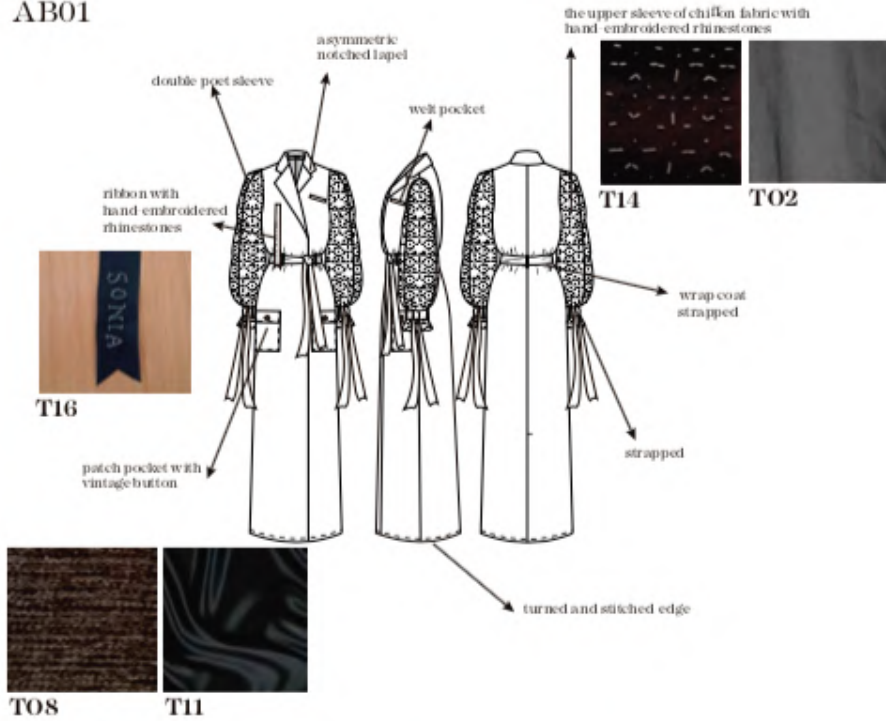


LOOK8
PAN01

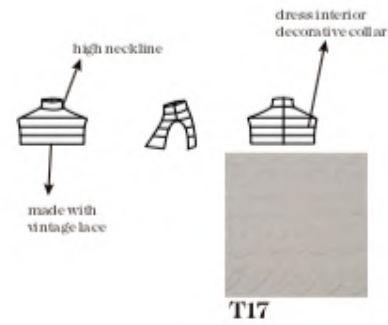


LOOK 1

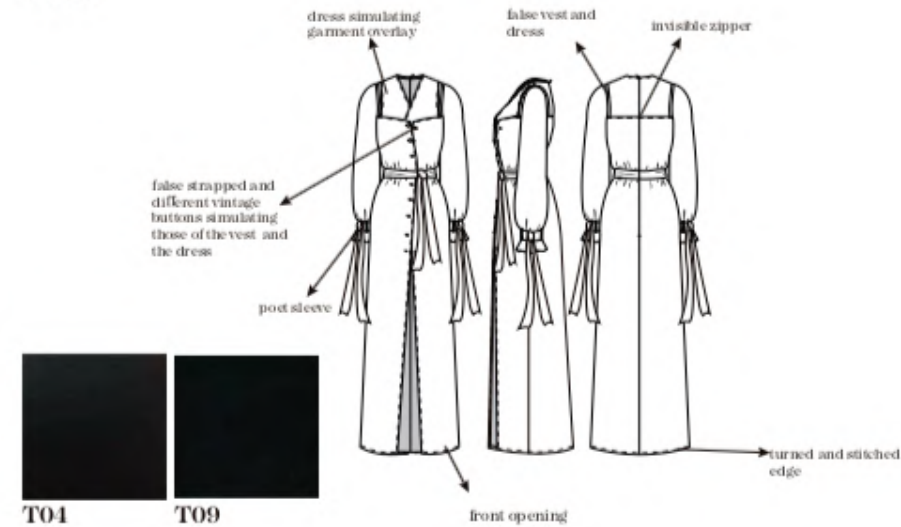
AB01



PE01



VE02























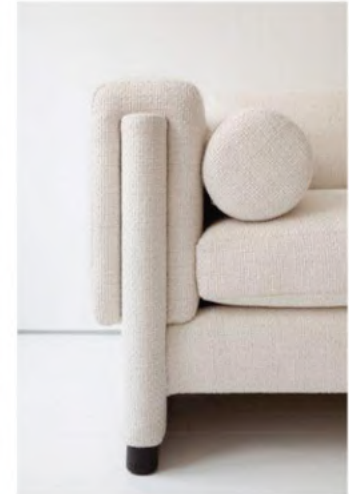
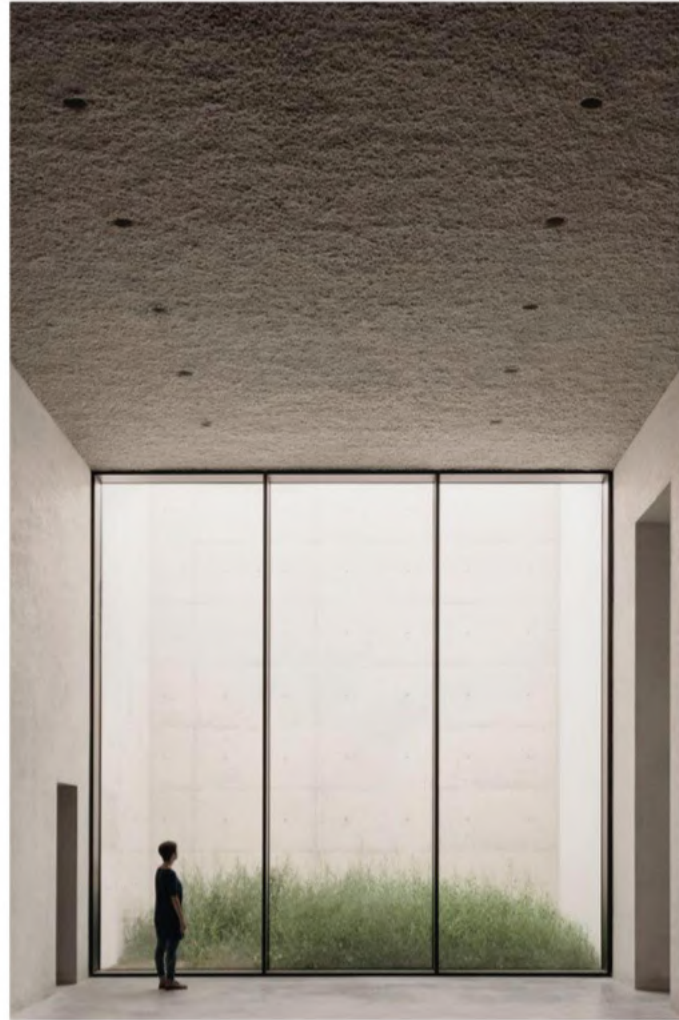


Technical sheets and scandal

Work example for a tester, starting from a concept to create a capsule collection for a brand with a high purchasing power.

Concept, technical sheet, plannings, buyer plans and scandal.

Moodboard



Inspiration



Color card



11-0602 TCX
Snow White

ref. CO01



13- 1308 TCX
Brazilian Sand

ref. CO02



113-1504 TCX
Peach Blush

ref. CO03



19-3911 TCX
Black Beauty

ref. CO04

SUPPLIER CUCU

REFERENCE SH001	SEASON Summer 2021
DESIGNER Sonia Cuesta	LINE WOMEN
DATE 16/6/21	GARMENT Shirt



SUPPLIER CUCU

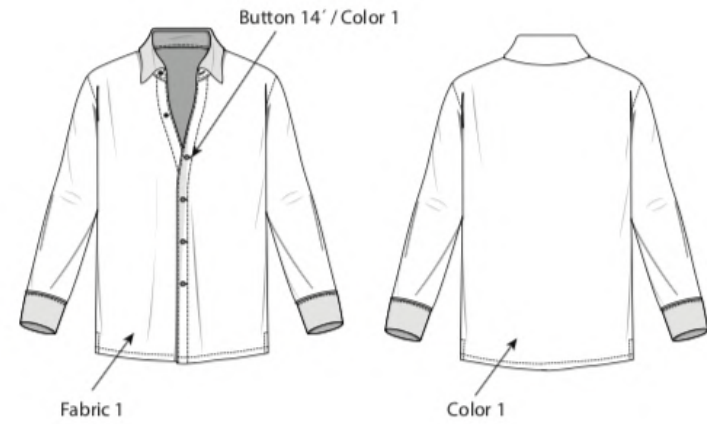
REFERENCE SH001	SEASON Summer 2021
DESIGNER Sonia Cuesta	LINE WOMEN
DATE 16/6/21	GARMENT Shirt



001-Pink

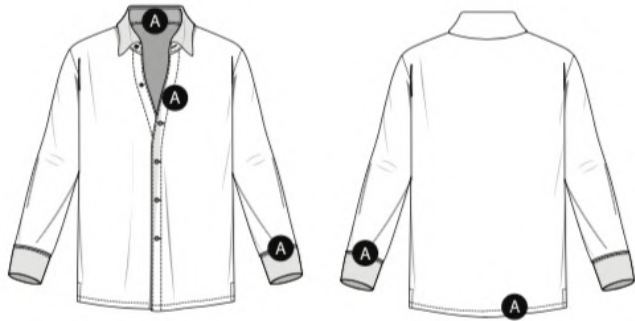


002-Grey



SUPPLIER CUCU

REFERENCE SH001	SEASON Summer 2021
DESIGNER Sonia Cuesta	LINE WOMEN
DATE 16/6/21	GARMENT Shirt



SUPPLIER CUCU

REFERENCE SH001	SEASON Summer 2021
DESIGNER Sonia Cuesta	LINE WOMEN
DATE 16/6/21	GARMENT Shirt



PROTO SAMPLE COLOR: 001-Pink
SALES SAMPLE COLOR: 001-Pink
SALES SIZE: M SIZES S-XL

FABRIC: Fabric 1: TE-001 - SATIN - 100 GR/M2	COMPOSITION: Fabric 1: 100% Silk
---	-------------------------------------








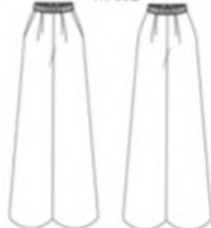
FINISHES: -
COLOR WAYS CODE: 001-Pink / 002-Gray

CODE	COLOR 1	COLOR 2	COLOR 3
001	Pink 13-1504 tcx		
002	Gray 11-0602 tcx		



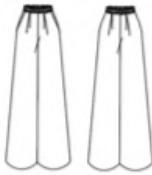





	cost per meter	need	total price
Silk satin 100 gr/m2 10	7,50	1,00	7,50
	0,00	0,00	0,00
	0,00	0,00	0,00
Fabric			0,00
			0,00
Lining			0,00
Total			7,50
	cost per supplies	need	
Button	0,20	9,00	1,80
Cord	0,00	0,00	0,00
Eyelets	0,00	0,00	0,00
Padd	0,00	0,00	0,00
supplie			
Rubber band 0'5	0,00	0,00	0,00
Prints (PYGMENT PRINT	0,00	0,00	0,00
embroidery	0,00	0,00	0,00
Packaging	2,00	1,00	2,00
Total			3,80
	(price/minute)	(minuts)	
Minute Cost	0,18	15,00	2,70
Cutting	0,18	7,00	1,26
ut Wo			
Assembling	0,18	3,00	0,54
Finishing	0,00	1,00	0,00
Total			4,50
Grading Cost per piece / Need	0,18	2,00	0,36
Transport			0,00
Extras			0,00
Production Cost			16,16
			16,16
Retail Margin / Markup			9,00
Retail / Public Selling Price			145,44



Planning

CLOTHES	REF.	FABRIC	COLOR	CLOTHES	REF.	FABRIC	COLOR
 <p>SH-001</p>	001-Pink	TE-001 Silk Satin 100 gr/m2 100% Silk	Pink 13-1504 TCX	 <p>CA-002</p>	013-Black	TE-002 Cut and Sew 100 gr/m2 100% Mohair	Black 19-3911 TCX
	002-Gray	TE-001 Silk Satin 100 gr/m2 100% Silk	Gray 11-0602 TCX		014-Brown	TE-002 Cut and Sew 100 gr/m2 100% Mohair	Brown 13-1308 TCX
 <p>JU-002</p>	009-Black	TE-003 Single jersey 150 gr/m2 100% O.Cotton Modal	Black 19-3911 TCX	 <p>DR-001</p>	007-Pink	TE-003 Single jersey 150 gr/m2 100% O.Cotton Modal	Pink 13-1504 TCX
	010-Brown	TE-003 Single jersey 150 gr/m2 100% O.Cotton Modal	Brown 13-1308 TCX		008-Gray	TE-003 Single jersey 150 gr/m2 100% O.Cotton Modal	Gray 11-0602 TCX
 <p>JU-001</p>	003-Brown	TE-002 Cut and Sew 100 gr/m2 100% Mohair	Brown 13-1308 TCX	 <p>TR-001</p>	005-Gray	TE-001 Silk Satin 100 gr/m2 100% Silk	Gray 11-0602 TCX
	004-Black	TE-002 Cut and Sew 100 gr/m2 100% Mohair	Black 19-3911 TCX		006-Pink	TE-003 Single jersey 150 gr/m2 100% O.Cotton Modal	Pink 13-1504 TCX
 <p>CA-001</p>	011-Gray	TE-002 Cut and Sew 100 gr/m2 100% Mohair	Gray 11-0602 TCX	 <p>TR-002</p>	015-Brown	TE-003 Single jersey 150 gr/m2 100% O.Cotton Modal	Brown 13-1308 TCX
	012-Pink	TE-002 Cut and Sew 100 gr/m2 100% Mohair	Pink 13-1504 TCX		016-Black	TE-003 Single jersey 150 gr/m2 100% O.Cotton Modal	Black 19-3911 TCX

Purchase

CAMISA	JERSEY	PANTALÓN	CHAQUETAS	VESTIDO
 <p>Ref. P001 Portugal S, M, L Compraremos: 2.000 en total. En color CO03 - 1.000. En color CO01 - 1.000.</p>	 <p>Ref. P002 Portugal S, M, L Compraremos: 2000 en total. En color CO04 - 1.500. En color CO02 - 500.</p>	 <p>Ref. P004 Portugal S, M, L Compraremos: 2000 en total. En color CO02 - 500. En color CO04 - 1.500.</p>	 <p>Ref. P006 Portugal S, M, L Compraremos: 2000 en total.</p>	 <p>Ref. P008 Portugal S, M, L Compraremos: 2000 en total. En color CO03 - 1.000. En color CO01 - 1.000.</p>
	 <p>Ref. P003 Portugal S, M, L Compraremos: 2000 en total. En color CO02 - 500. En color CO04 - 1.500.</p>	 <p>Ref. P005 Portugal S, M, L Compraremos: 2000 en total. En color CO03 - 1.000. En color CO01 - 1.000.</p>	 <p>Ref. P007 Portugal S, M, L Compraremos: 2000 en total. En color CO04 - 1.500. En color CO02 - 500.</p>	

Ecodesign award

Project awarded the first ecodesign award.
Project made with tissue from apple skin waste.



pespunes



tiras



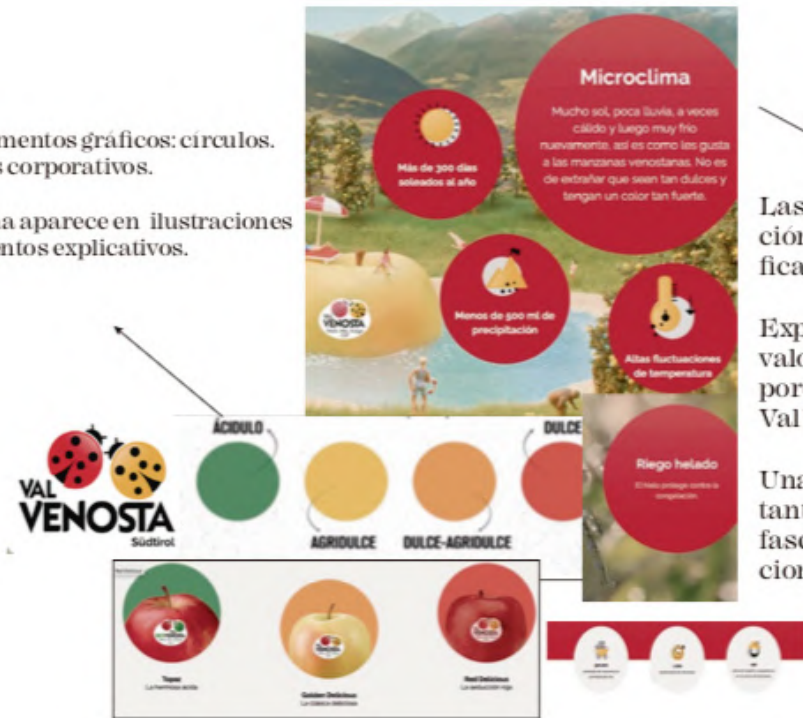
lazo/atar



troquel

Los elementos gráficos: círculos. Colores corporativos.

La gama aparece en ilustraciones y elementos explicativos.



Las fases de la producción de forma más gráfica.

Explican el porque del valor del producto y porque es tan especial Val Venosta.

Una parte muy importante es el clima. Fase a fase su proceso y condiciones climáticas.

El patrón hecho de forma que se desperdicie el mínimo. Sin costuras en centro espalda ni lateral. Los restos utilizados para crear elementos de bolsillos del delantal o el complemento.



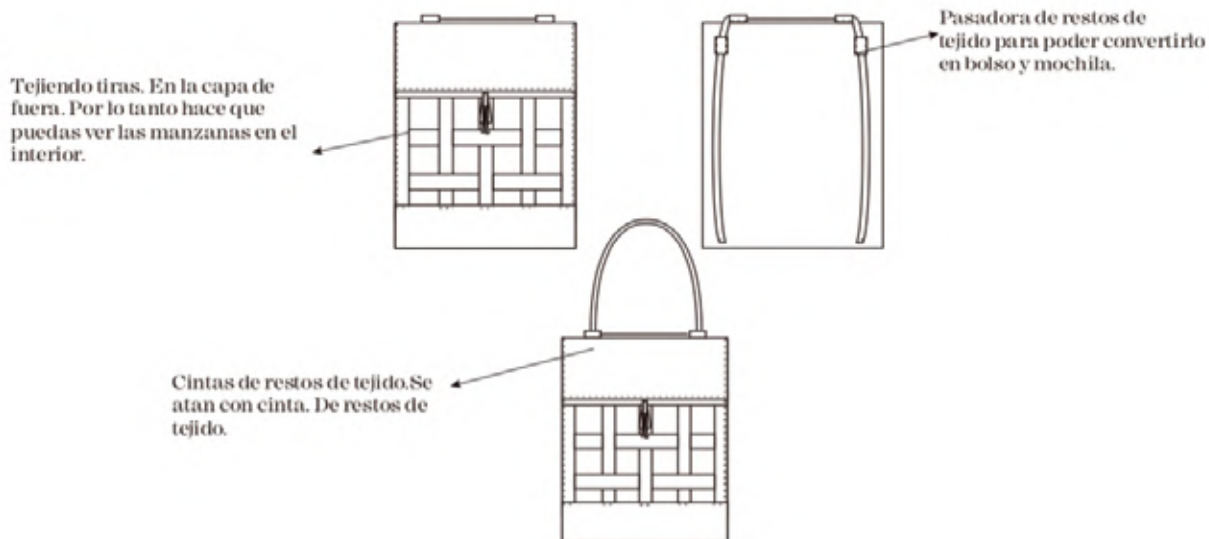
Después de analizar la marca, mi concepto de diseño se basa en la historia de la marca. Una narración de su historia, sus procesos de elaboración y sus valores. Con este diseño tanto el consumidor como el cliente que lo vea puede sentirse en más cercanía con la marca y no solo valorar el producto por su calidad y sabor si no por sus valores.

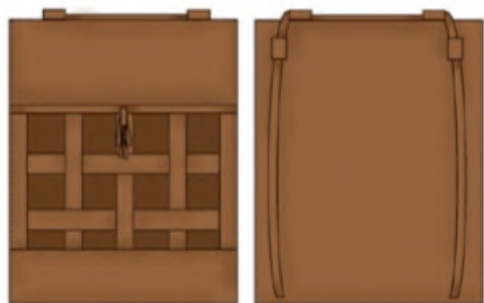




Con tapa y se utilizan las tiras para atar para poder cerrarla. Se hacen con los restos de tejido y así se utilizan los desechos.

Capa exterior tejiendo las tiras en la capa de fuera. Por lo tanto hace que puedas ver las manzanas en el interior. Pasadores en la parte de arriba y la espalda hace que se pueda correr las tiras. Por lo tanto si tiras de la capa de arriba se convierte en bolso y si tiras de la espalda en mochila.





Ecodesign projects



Sonia Cuesta
BARCELONA

Thank you so much.

Sonia Cuesta Gutiérrez

soniacuestabcn@gmail.com

[@soncuesta](#)

+34 676360181