

Interior Design

PUBLIC BUILDING | RESIDENTIAL | RETAIL STORE

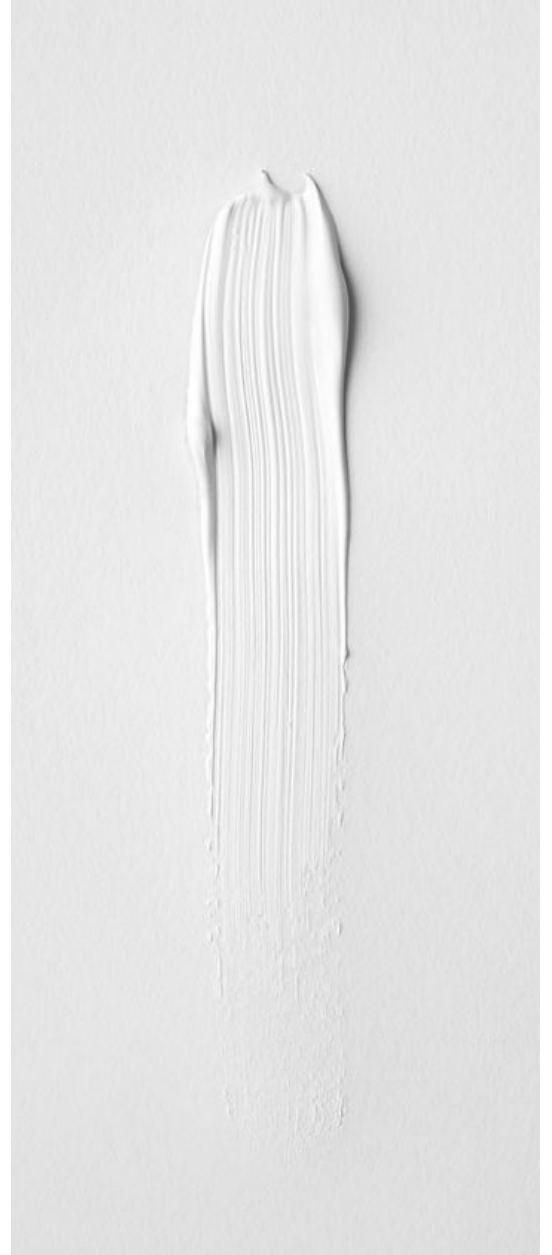
PORTFOLIO

An abstract background featuring a large, irregular teal shape that resembles torn paper or a splash of paint, set against a white background. The teal shape has a textured, slightly grainy appearance. The word 'PORTFOLIO' is overlaid on the top part of this shape in a large, bold, black sans-serif font.

YARU LEI

ABOUT ME .

I am an entry-level interior designer with a huge interest in residential design. I find the residential design is the most rewarding field of design. Because as a designer, I have the opportunity to create dynamic and stress-free environments where users can appreciate their experiences with friends or family in these spaces that are specially designed for each of them. Senses and emotions are strongly taken into consideration of every design aspect. I always believe that interior design is based on people. There is no best design, only the most suitable plan for customers. The priority of my design are the requirements of the clients. I achieve that by individualizing design details based on human behaviour, customizing features and systems and making psychological color&material decision.



01

01-22

GLENEAGLES
ELEMENTARY SCHOOL

23-36

02

RESIDENTIAL
DESIGN

03

37-48

OAK + FORT
RETAIL STORE

01

GLENEAGLES CH'AXÁY ELEMENTARY

Gleneagles is an elementary school that has over 350 students from kindergarten to grade 7.

It was established in the 1950s, and it is providing students with an education that will promote a love of learning. As a community of learners, our staff, students and parents work together to create a challenging and supportive school climate that promotes literacy, cognitive skills, responsibility, and caring. The spirit of the school is Positive, ownership, we not me, excellence and respect.

LOCATION:
West Vancouver, B.C, Canada

ADDRESS:
6350 Marine Drive Road

TELEPHONE:
(604) 981 1360

EMAIL:
gleneagles@wvschools.ca



GLENEAGLES ELEMENTARY SCHOOL

SCHOOL DESIGN



SITE INFO

Gleneagles Ch'axáy Elementary is located at the western point of West Vancouver, bordered by Gleneagles Golf Course, the Upper Levels Highway and Howe Sound, and includes students from Horseshoe Bay, Lions Bay and Eagle Harbour.

Gleneagles students are fortunate in having easy walking access to beaches, ferries to Langdale, Bowen Island and Nanaimo and various hiking trails.



HISTORY



SQUAMISH NATION

The school land of Gleneagles Ch'axáy Elementary was originally owned by Squamish Nation, it is comprised of descendants of the Coast Salish Aboriginal peoples who lived in the present day Greater Vancouver area. The nation has a complex and rich history. For culture, the best-known ones are the Longhouse and their artworks.

Ceremonial events of the Squamish people are customarily conducted in the Longhouse. During pre-contact, certain Longhouses were utilized as community dwellings, and others were set aside for the exclusive use of the winter spiritual dances. The Longhouse is a sacred place that plays a significant role in the culture of the Coast Salish people. The nation is

also home to many renowned artists in the areas of traditional arts such as carving (masks, canoes, welcome figures), painting, jewellery and weaving (wool and cedar), as well as more contemporary arts such as clothing design, ceramics, folk art and modern forms of music.

DESIGN INTENT

+

CONCEPT

This project is to redesign the school. The original school was designed and established in the 1950s, the space planning and the facility need to be modernized to adapt the education system nowadays. This project is challenging since the school has a wide age range, apart from the staffs, the students are 5-13 years old, every stage of the growth of kids are essential and need to be treated differently. According to the principal, the most important spaces that need to be redesigned are the grade 6-7 wing of the school, the learning commons, the entrance and the school needs adequate breakout spaces that are convenient for everyone. For grade 6-7, the changes need to be done because kids at the ages of 12-13 are sensitive and starting to consider themselves adult. They need more attention, and they need a more sophisticated environment to study and socialize with others. The school also needs to be a place that serves the community. Therefore, multi-function rooms and spaces will be added to the design. The ultimate goal of this design is to create a healthy and productive environment for everyone in the school to work and study comfortably.

Safety

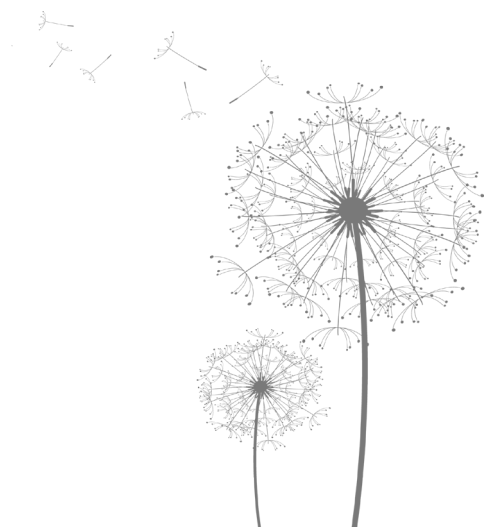
Educationally Effective

Sustainable

Comfortable

Healthy

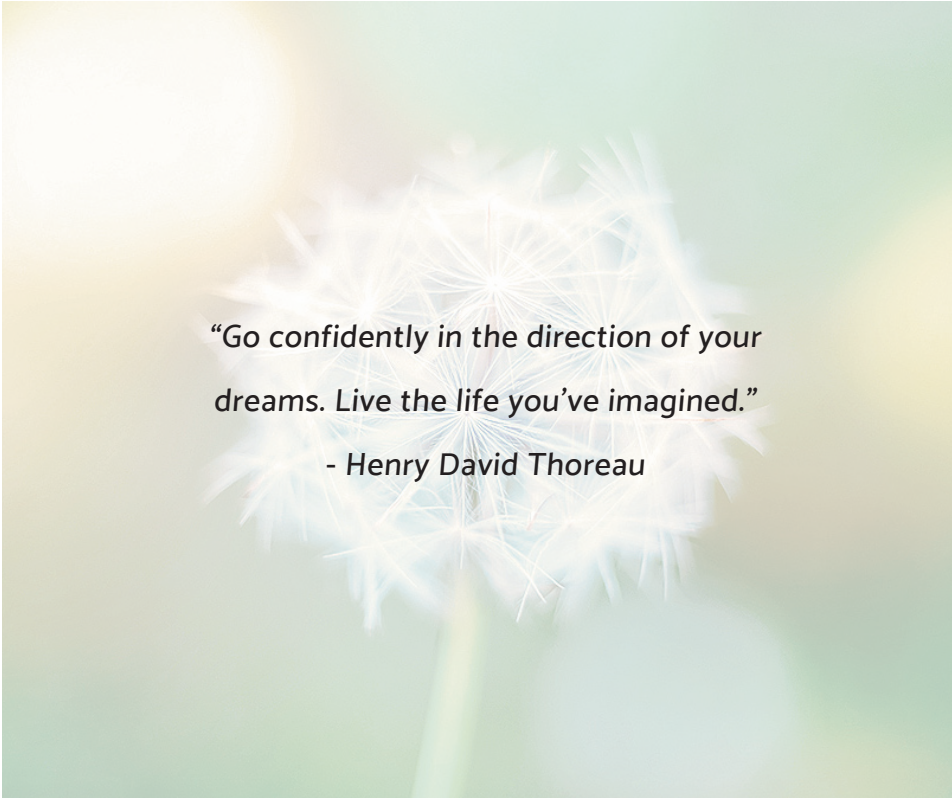
Community



This project is inspired by dandelion, one of the most common plants in British Columbia, especially in West and North Vancouver where a large proportion of Squamish people resides on.

Gleneagles Elementary School educates children from age 5 to age 13, children at this age range are going through a lot of physical and mental changes. Dandelion is a typical kind of plant that changes its forms and colours through its growth, just like the children.

The spirit of dandelion is: the warmth and power of the rising sun; fighting through the challenges of life, which suits the school concept very well.

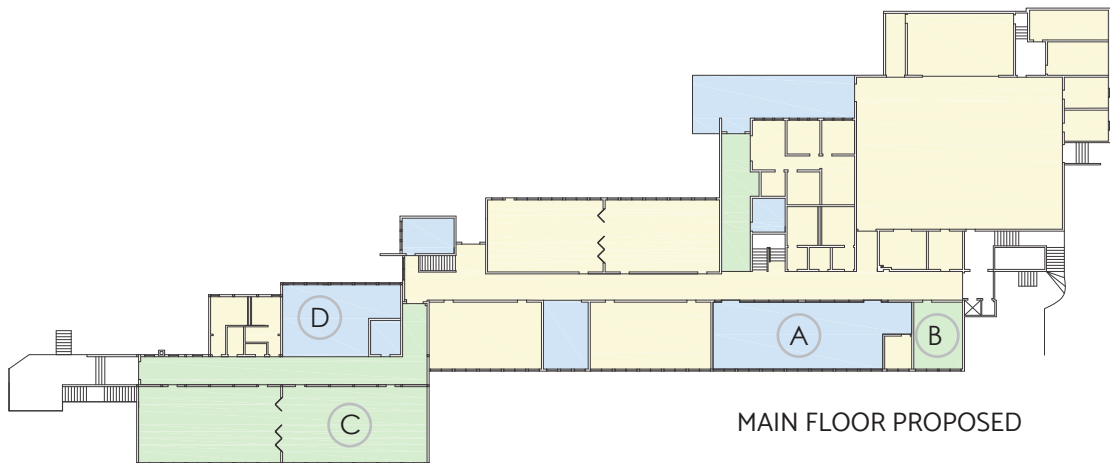
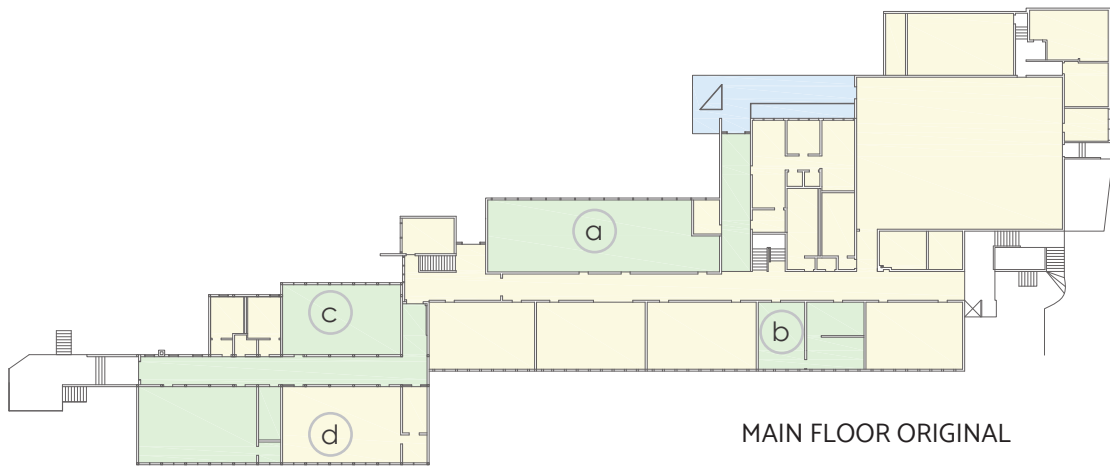


“Go confidently in the direction of your dreams. Live the life you’ve imagined.”

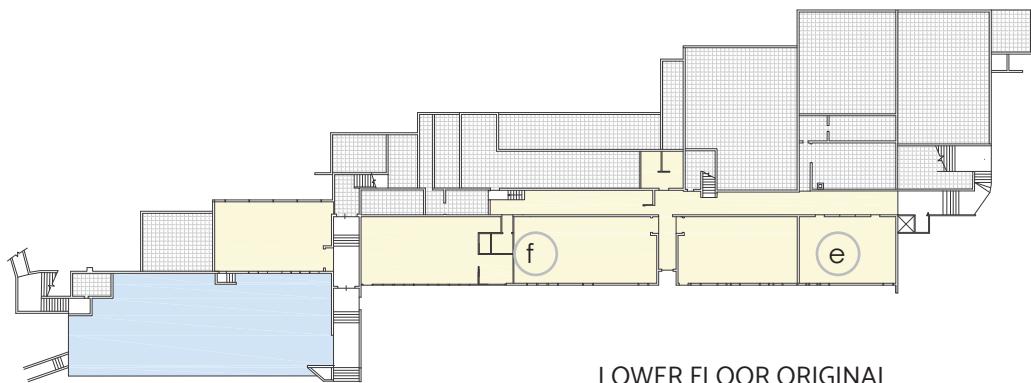
- Henry David Thoreau

PHASING PLAN

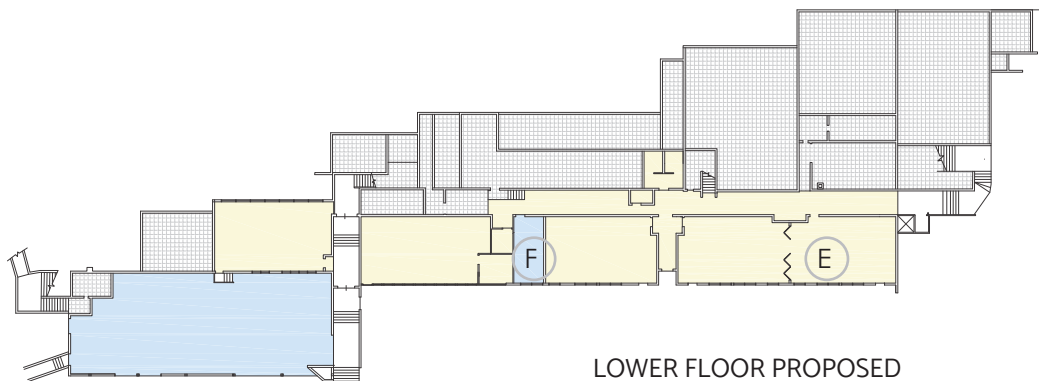
Scale: 1/64"=1'-0"



- Phase 1 (primary priority)
- Phase 2 (secondary priority)
- Phase 3 (additional design)



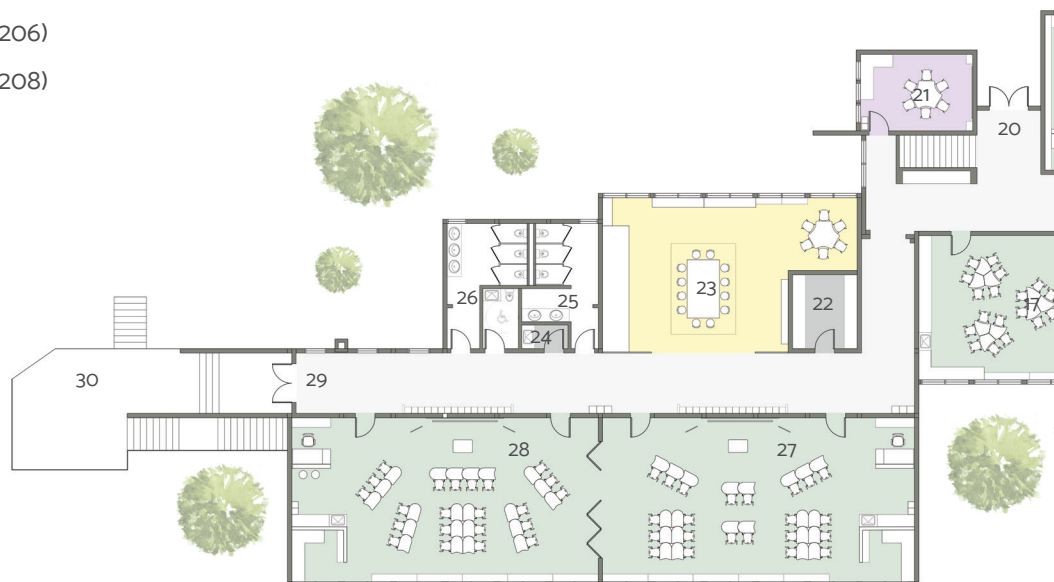
LOWER FLOOR ORIGINAL



LOWER FLOOR PROPOSED

01 - MAIN ENTRANCE
 02 - RECEPTION (RM218)
 03 - GENERAL OFFICE (RM220)
 04 - PRINCIPAL OFFICE (RM222)
 05 - STAFF WORKSTATION (RM221)
 06 - VICE PRINCIPAL OFFICE (RM219)
 07 - COPY ROOM (RM217)
 08 - NURSE'S ROOM (RM223)
 09 - CUSTODIAN'S ROOM (RM204)
 10 - GIRL'S WASHROOM 1 (RM202A)
 11 - BOY'S WASHROOM 1 (RM202B)
 12 - LEARNING ASSISTANCE (RM201)
 13 - COUNSELOR'S ROOM (RM205)
 14 - LIBRARY (RM203)
 15 - GR3-4 CLASSROOM (RM207)
 16 - BREAKOUT AREA 1 (RM209)
 17 - GR3-4 CLASSROOM (RM211)
 18 - GR4-5 CLASSROOM (RM206)
 19 - GR4-5 CLASSROOM (RM208)

20 - ENTRANCE 2
 21 - STAFF LOUNGE (RM210)
 22 - INSTRUCTIONAL RESOURCE (RM212)
 23 - BREAKOUT AREA 2 (RM214)
 24 - JANITOR'S CLOSET (RM218)
 25 - GIRL'S WASHROOM 2 (RM216A)
 26 - BOY'S WASHROOM 2 (RM216B)
 27 - GR6-7 CLASSROOM (RM213)
 28 - GR6-7 CLASSROOM (RM215)
 29 - ENTRANCE 3
 30 - DECK



31 - STORAGE 1 (RM224)

32 - KITCHEN (RM226)

33 - GYM (RM225)

34 - STORAGE 2 (RM225D)

35 - STAGE (RM226)

36 - BOOK STORAGE

37 - ACTIVITY ROOM

38 - BOY'S CHANGING ROOM (RM225B)

39 - GIRL'S CHANGING ROOM (RM225C)

FURNITURE PLAN MAIN FLOOR

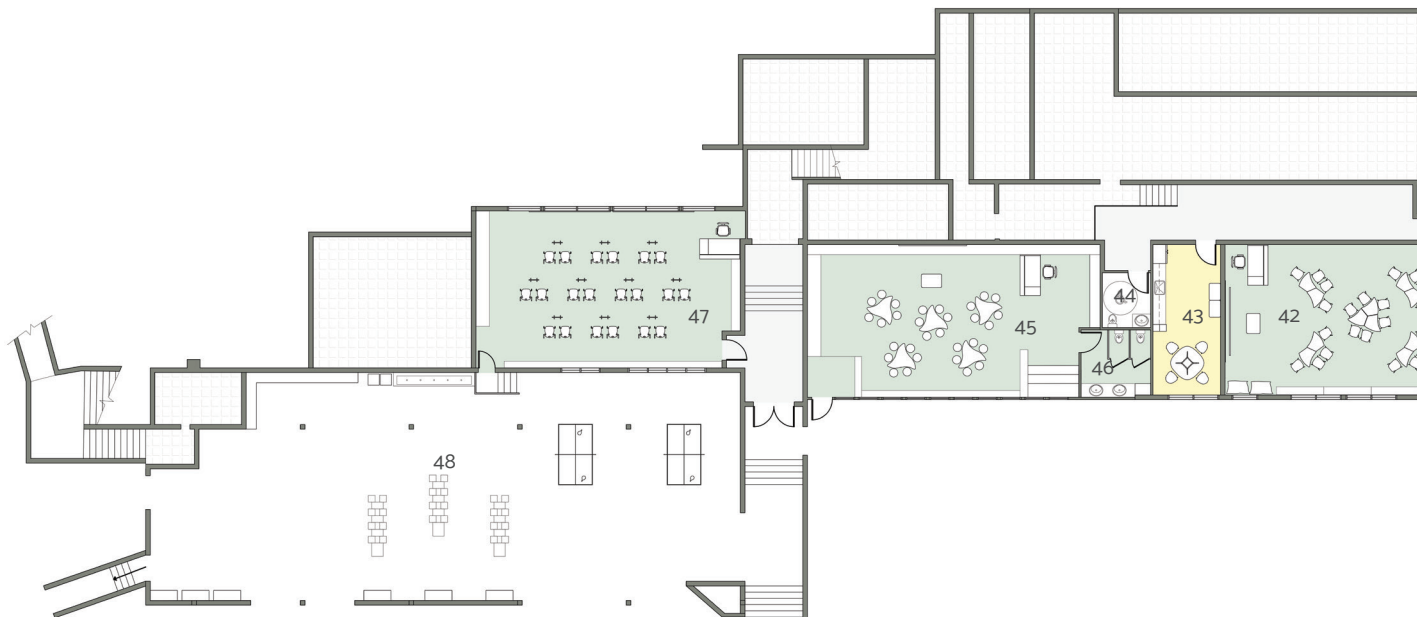


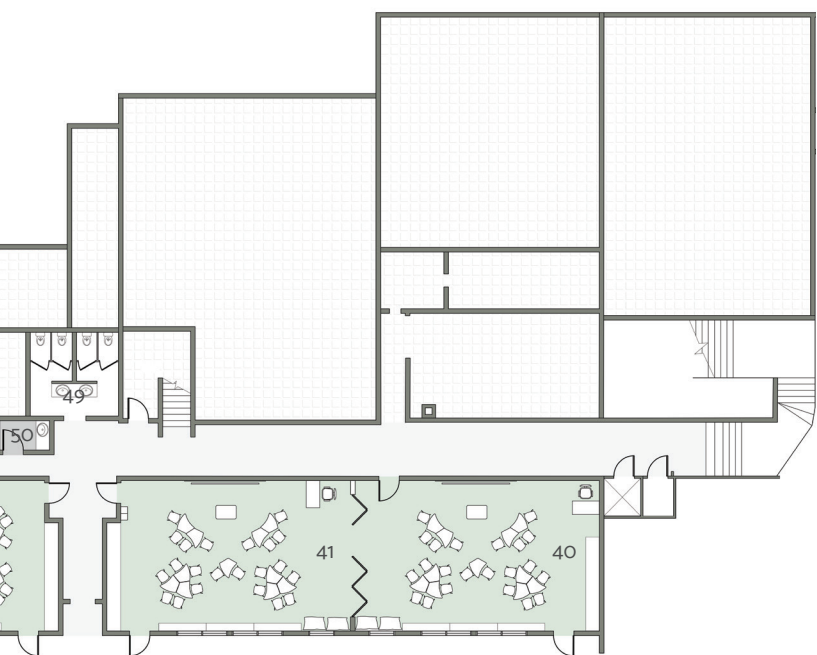
Scale: 1/32"=1'-0"

FURNITURE PLAN LOWER FLOOR



SCALE: 1/32"=1'-0"





- 40 - GR1-2 CLASSROOM (RM101)
- 41 - GR1-2 CLASSROOM (RM103)
- 42 - GR2-3 CLASSROOM (RM105)
- 43- STAFF LOUNGE (RM107)
- 44 - ACCESSIBLE / UNIVERSAL W/C (RM109)
- 45 - KINDERGARTEN (RM111)
- 46 - KINDERGARTEN WASHROOM (RM111B)
- 47 - MUSIC ROOM (RM114)
- 48 - COVERED PLAY AREA (RM113)
- 49 - WASHROOM (RM106)
- 50 - JANITOR'S CLOSET (RM108)