

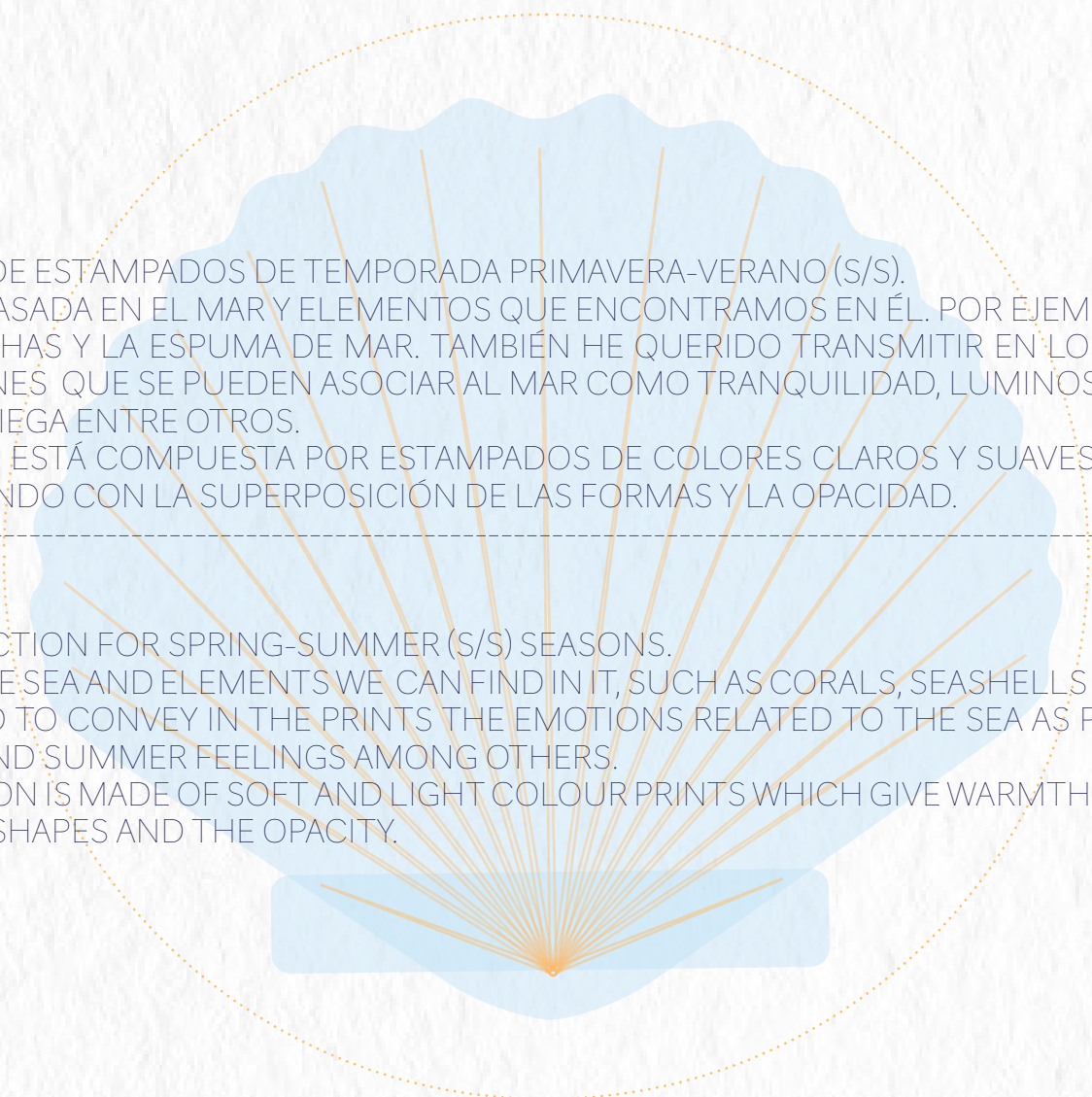


MAR

CRISTINA MONMANY

PRINT COLLECTION

S/S



COLECCIÓN DE ESTAMPADOS DE TEMPORADA PRIMAVERA-VERANO (S/S).
INSPIRACIÓN BASADA EN EL MAR Y ELEMENTOS QUE ENCONTRAMOS EN ÉL. POR EJEMPLO LOS CORALES,
LAS CONCHAS Y LA ESPUMA DE MAR. TAMBIÉN HE QUERIDO TRANSMITIR EN LOS ESTAMPADOS
LAS SENSACIONES QUE SE PUEDEN ASOCIAR AL MAR COMO TRANQUILIDAD, LUMINOSIDAD Y LA EVO-
CACIÓN VERANIEGA ENTRE OTROS.
LA COLECCIÓN ESTÁ COMPUESTA POR ESTAMPADOS DE COLORES CLAROS Y SUAVES QUE APORTAN
CALIDEZ, JUGANDO CON LA SUPERPOSICIÓN DE LAS FORMAS Y LA OPACIDAD.

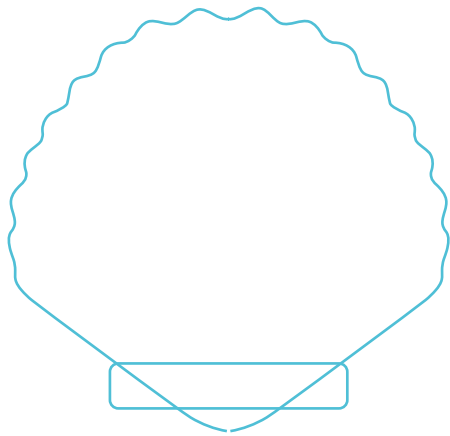
PRINT COLLECTION FOR SPRING-SUMMER (S/S) SEASONS.
INSPIRED BY THE SEA AND ELEMENTS WE CAN FIND IN IT, SUCH AS CORALS, SEASHELLS AND SEA FOAM.
I ALSO WANTED TO CONVEY IN THE PRINTS THE EMOTIONS RELATED TO THE SEA AS PEACEFULNESS,
BRIGHTNESS AND SUMMER FEELINGS AMONG OTHERS.
THE COLLECTION IS MADE OF SOFT AND LIGHT COLOUR PRINTS WHICH GIVE WARMTH, PLAYING WITH
OVERLAPPING SHAPES AND THE OPACITY.



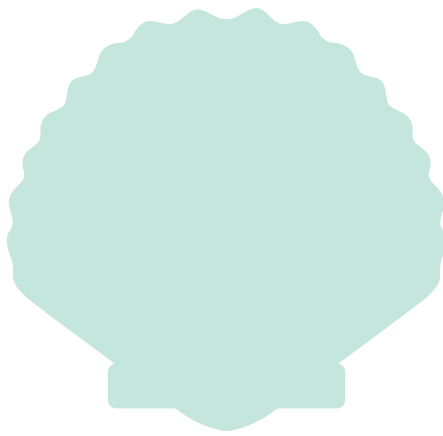
Star



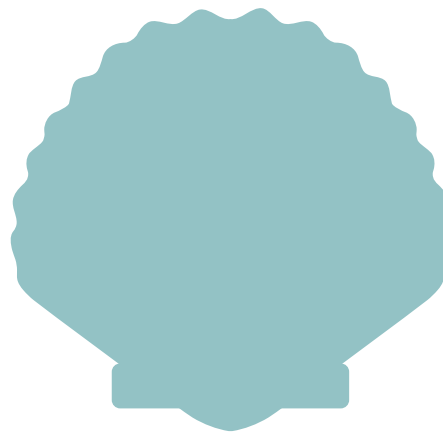
COLOUR
PALETTE



REF: BB00



REF: BL01



REF: BL02



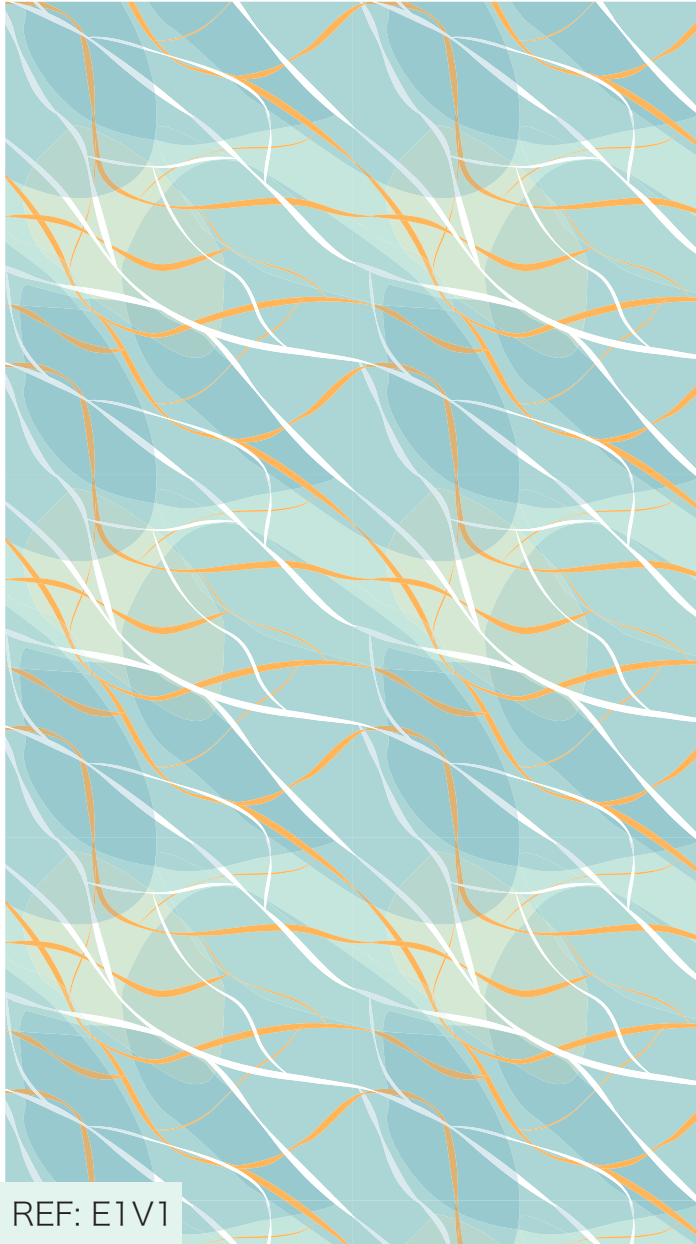
REF: YW01



PRINT
DESIGN







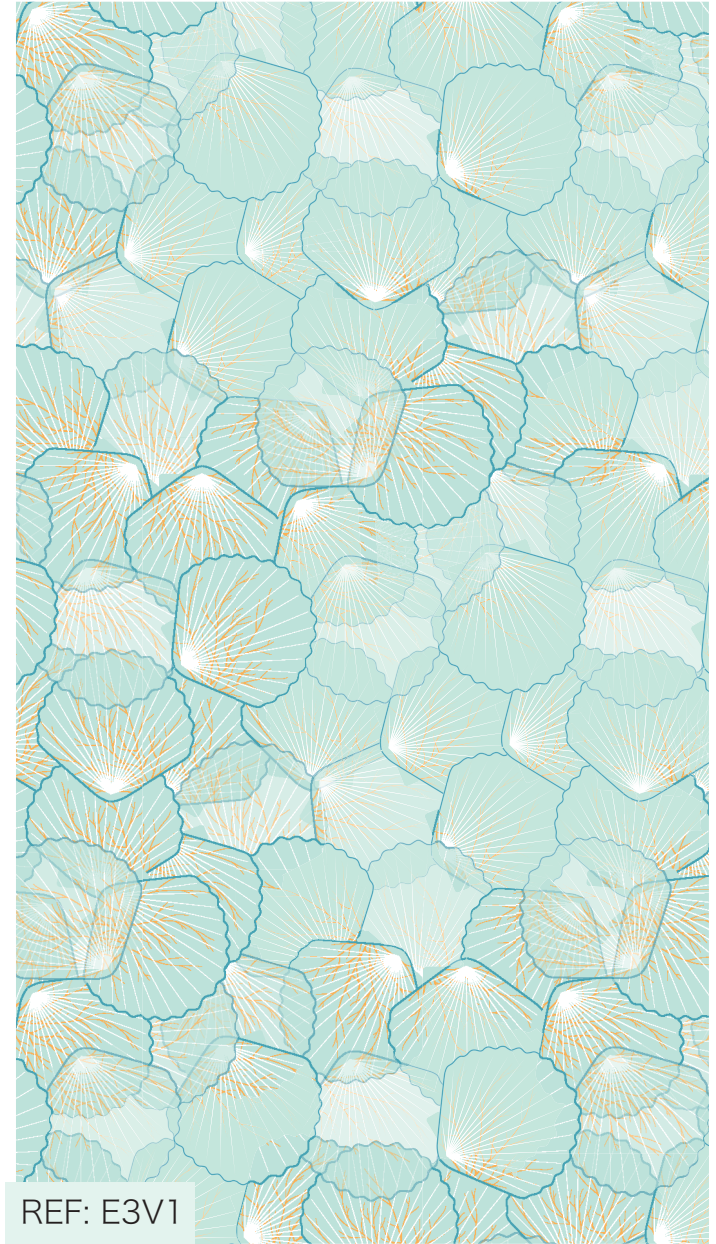
REF: E1V1

SUBLIMATION PRINT



REF: E2V1

SUBLIMATION PRINT

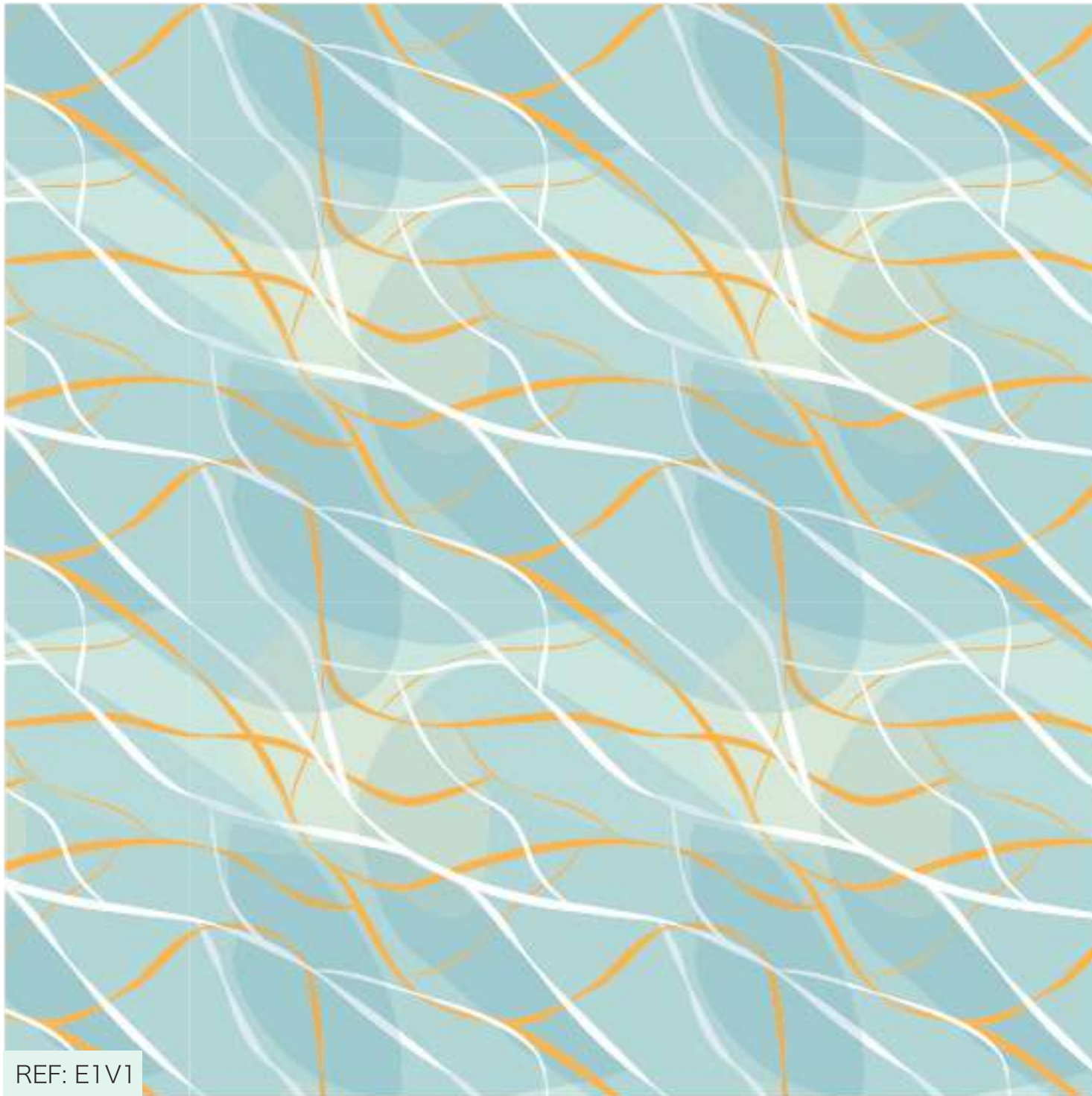


REF: E3V1

SUBLIMATION PRINT



COLOUR
VARIATIONS



REF: E1V1



REF: E1V2



REF: E1V3



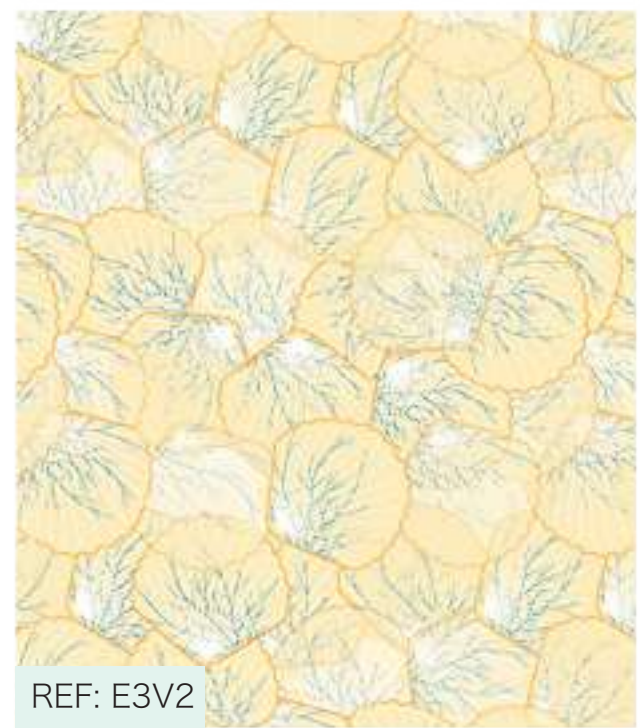
REF: E2V1



REF: E2V2



REF: E2V3





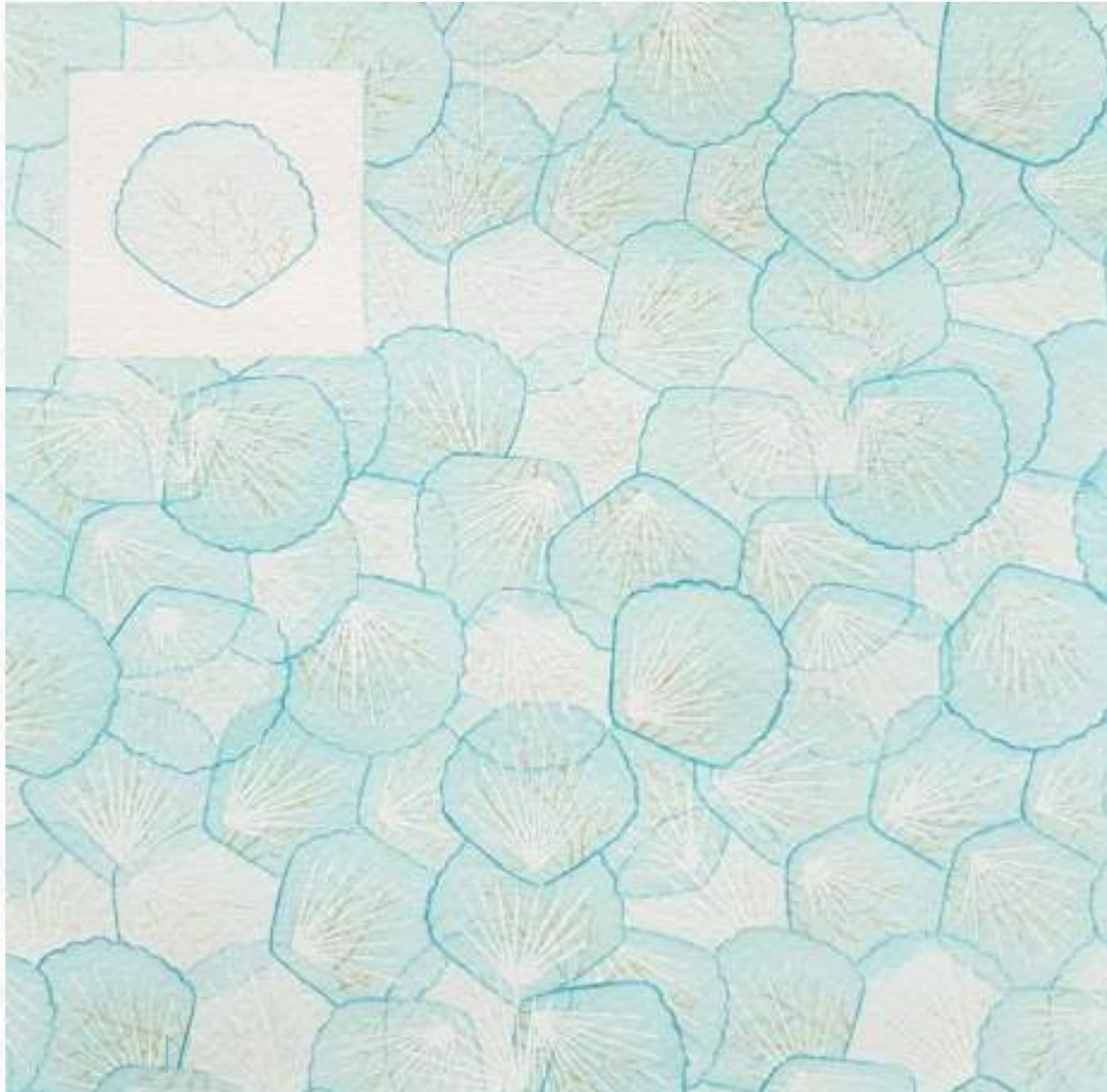
Watercolour | Gouache

REF: E1V1



Gouache

REF: E2V1



Watercolour | Pencil colour | White marker

REF: E3V1



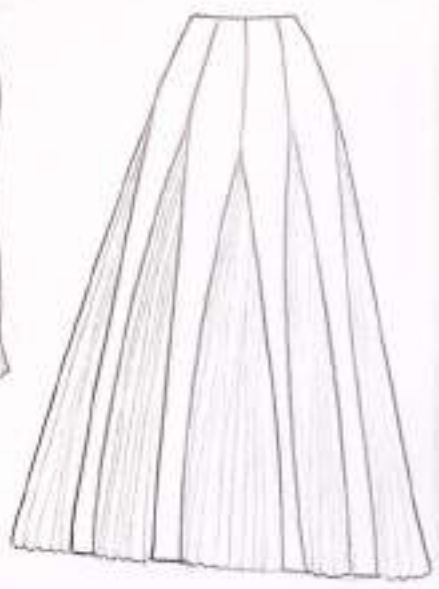
GARMENT
DESIGN



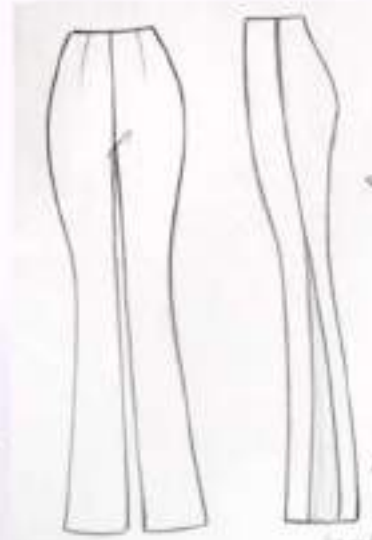
- + 12 eslabos
- + 10 folios
- + 12 puntadas
- + 2 hileras



↑
acostado
con
repulgo



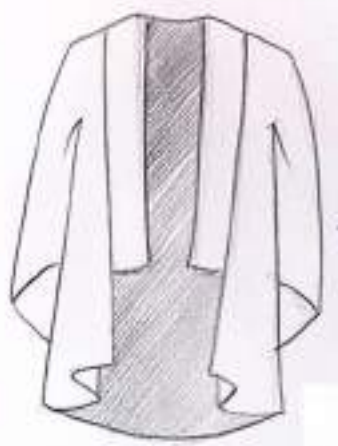
look 1
estampado
✓



look 2



look 3
estampado



✓
Estampado
look 1

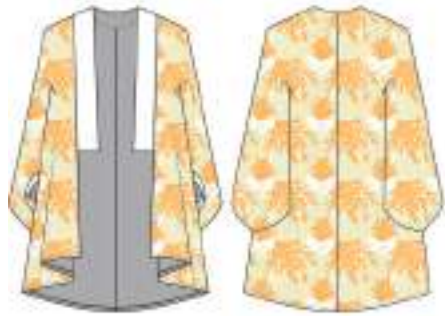


look 4



look 2

LOOK 1

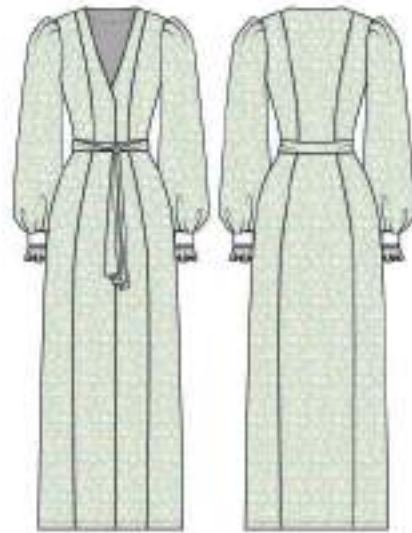


REF: E1V1



REF: E1V1

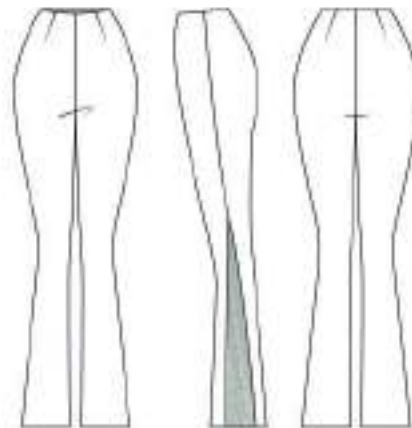
LOOK 2



REF: E2V1



REF: E2V1



REF: E2V1

LOOK 3



REF: E3V1



REF: E1V1



REF: E2V1



REF: E3V1

