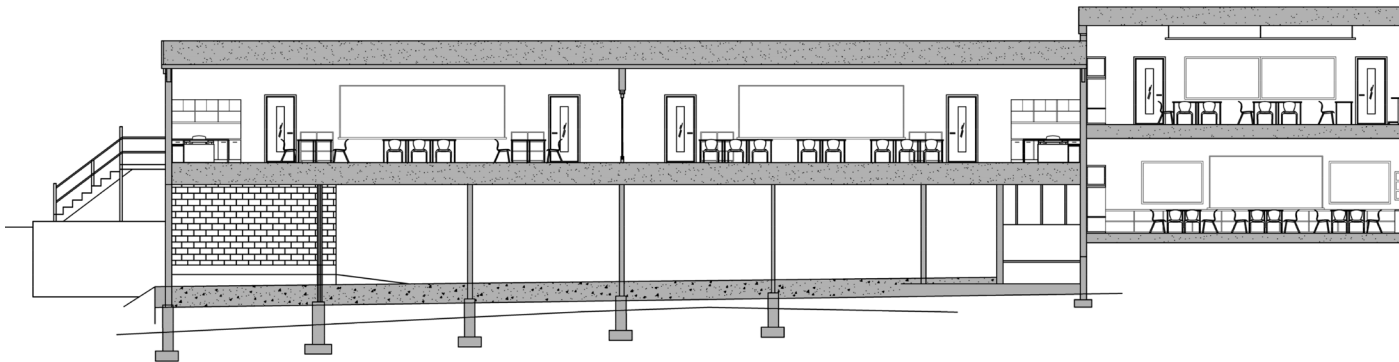


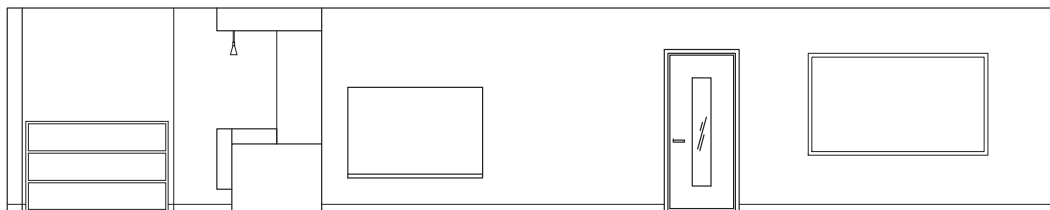
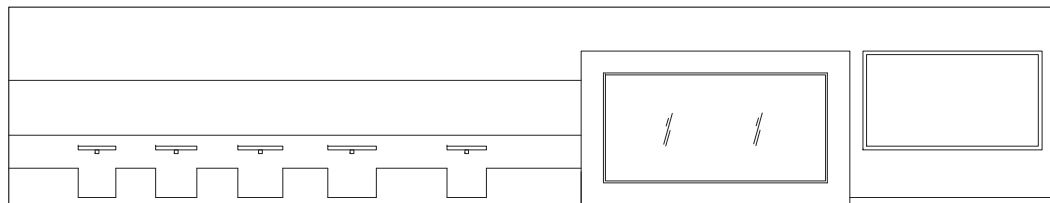
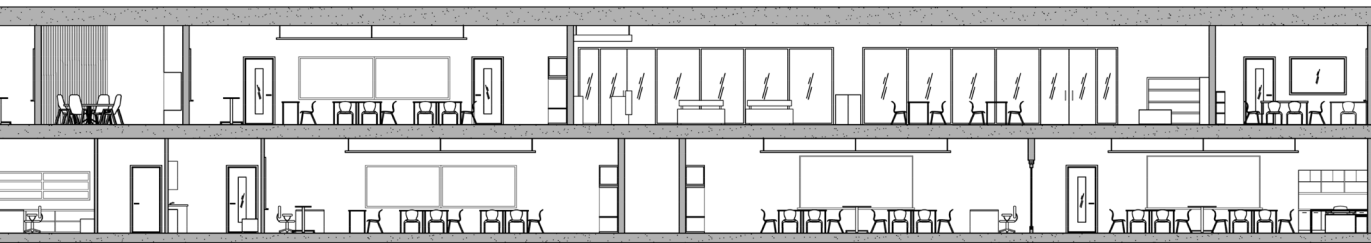
GRADE 6-7 CLASSROOM ELEVATION



NORTH WEST SECTION

SECTION + ELEVATION

SCALE: 1/32"=1'-0"



ENTRANCE RECEPTION/CORRIDOR ELEVATION

FURNITURE



Makerspace Table

Location: Learning Assistant Room, Multi-function Room

A makerspace is a place to build, tinker, work and get creative. This table can do it all. Get high tech with 3d printers, make unique projects with construction paper and Legos or go heavy duty by choosing the epoxy top. The makerspace table is a perfect spot for any group work, while still remaining mobile.



Double Face
60 Degree Radius Cabinet

Location: Library

This adjustable storage solutions help keep the space neat and organized. Features a double-faced cabinet with adjustable shelves on each side. They come standard with heavy duty magnets on the outer sides for docking and matching edge band.



3P-120 (Shape table)

Location: Library, GR4-5 Classroom, Breakout spaces

The 3P-120 shape top offers a fun, unique work area for students. Join multiple shapes and create a fun cluster of tables in a collaborative classroom setting.



Aperture (Shape Table)

Location: GR1-4 Classrooms

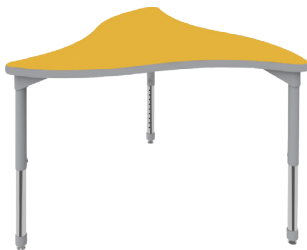
The aperture shape top can be used to create endless configurations for one, two, or multiple students sitting together or in fun clusters. Allow students to move and create new configurations daily.



Linc (Shape Student Desk)

Location: GR6-7 Classrooms

A cross between the traditional rectangle and the fluid movement of the beta shape. This desk allows for small and large reconfigurations in the classroom. Available in banded flat edge with titanium or black post legs. Accessories include casters, book boxes, screens and backpack hook.



Gravity (Shape Table)

Location: Kindergarten

The Gravity Shape Table has a 50" work surface that can support small teams or large group collaborations. When used as a standalone table, it can easily support three people. Get inventive and seamlessly connect it with another shape such as the Expanse or Nebula to create an endless array of configurations.



AFTER



BEFORE

RECEPTION AREA

The original reception area is an enclosed area combined with the office area. To make the space more open and convenient for the students to access, the wall on the left side of the entrance has been demolished. It makes the reception area a part of the corridor. It also makes an extra waiting area in front of the reception desk.



AFTER

MAIN CORRIDOR

The redesigned corridor is brighter and broader compares to the original corridor. The main colour of the original corridor is grey and dark green while the redesigned one is mainly white, light wood and yellow-green. Also, the light stripes along the corridor add more light into space.



BEFORE



AFTER

LIBRARY

The redesigned library is more functional than the original one. It has four different types of seating so students can read alone, discuss with peers, or study with a bigger group up to 6 people. The moveable furniture and storages allow this space to have different functions.



BEFORE