

CLAUDIA GUTIÉRREZ GEL

PORTFOLIO

LCI Barcelona



The women's conditions are not easy now, but it never was. The sexism and the gender violence are not afraid by a pandemic, to the contrary. Every day miles of women lives the abuse but especially now with the pandemic.

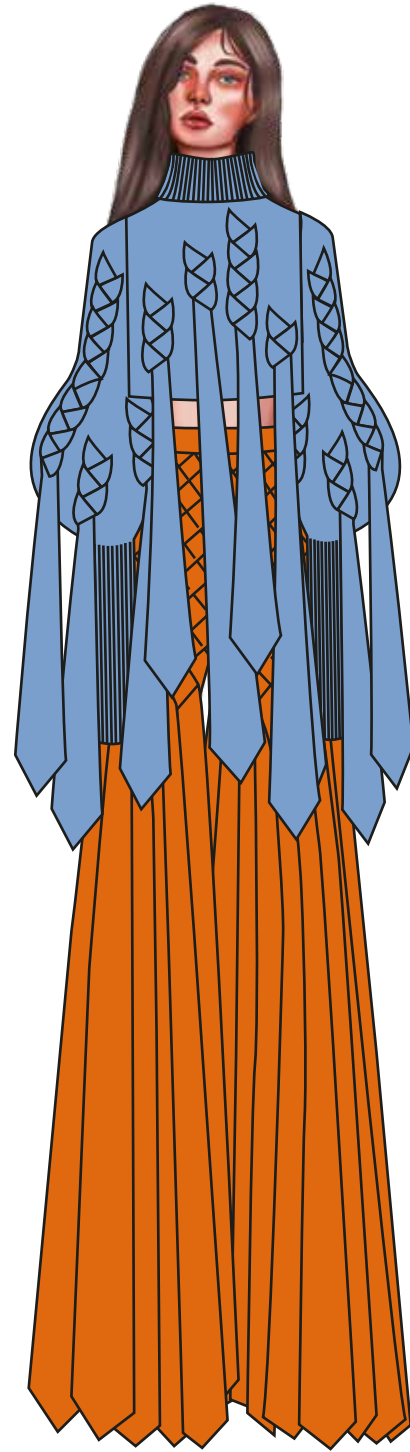
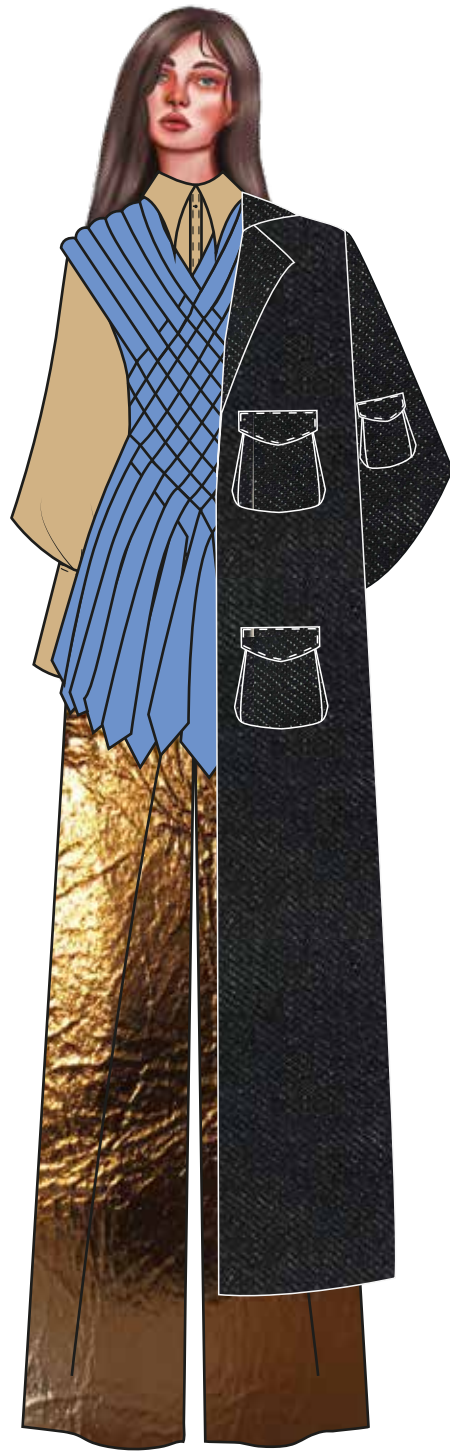


Teleworking is isolating all those women whose going to work was a break. At homes there are an increase of sexism and gender violence because of the pandemic and the look down. We have to end it, because now is the moment, we have to broke with the patriarchy once and for all and living the moment to be the moment.

Unharmred proposes a turn in society, positioning women above men, putting an end to inequalities between the sexes.







Ref: #TL4



Ref: #TR1

Ref: #CAL4



Ref: #T9

Ref: #T3

piped cord edge

gathered

fabrics
superposition

tie in wool

cover seaming
stitch

manipulated organza
fabric
inserted in seam.

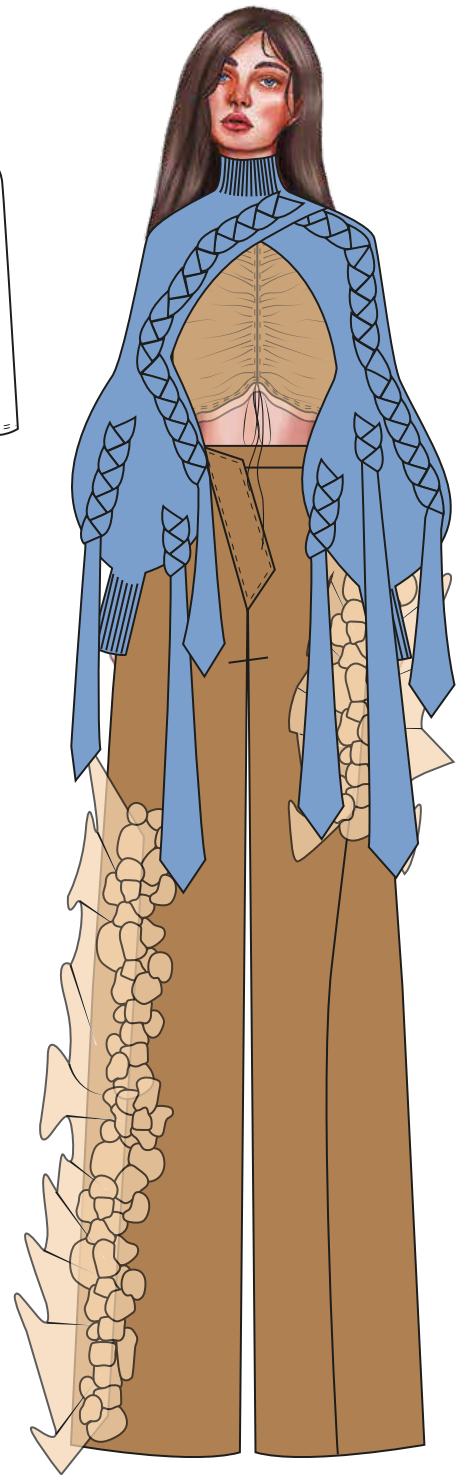
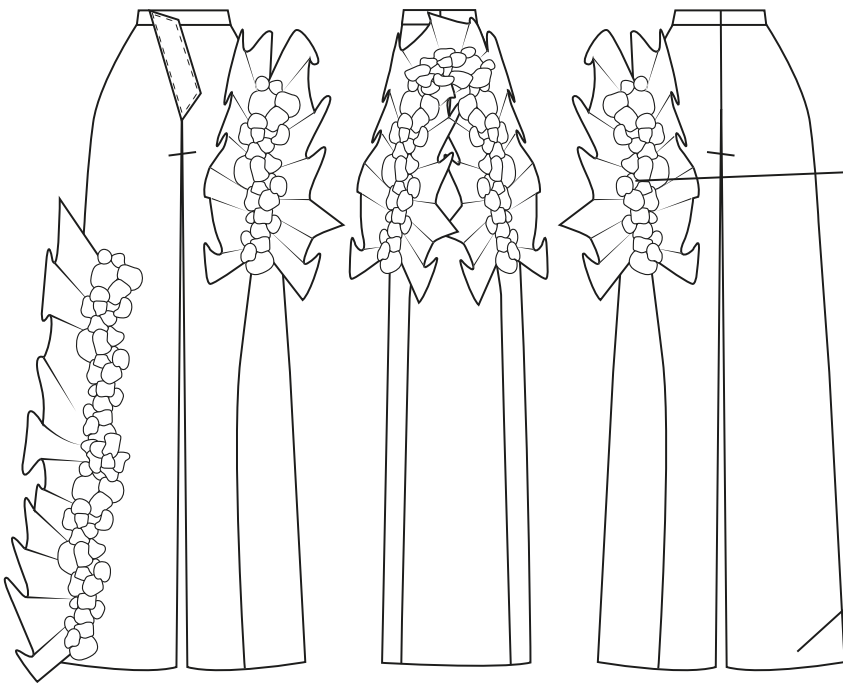
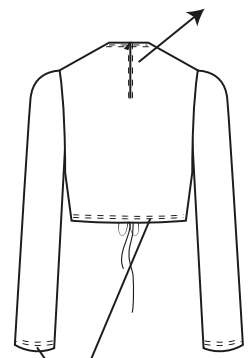
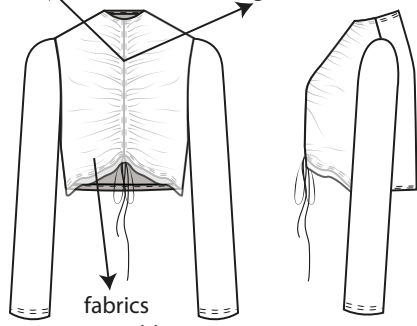
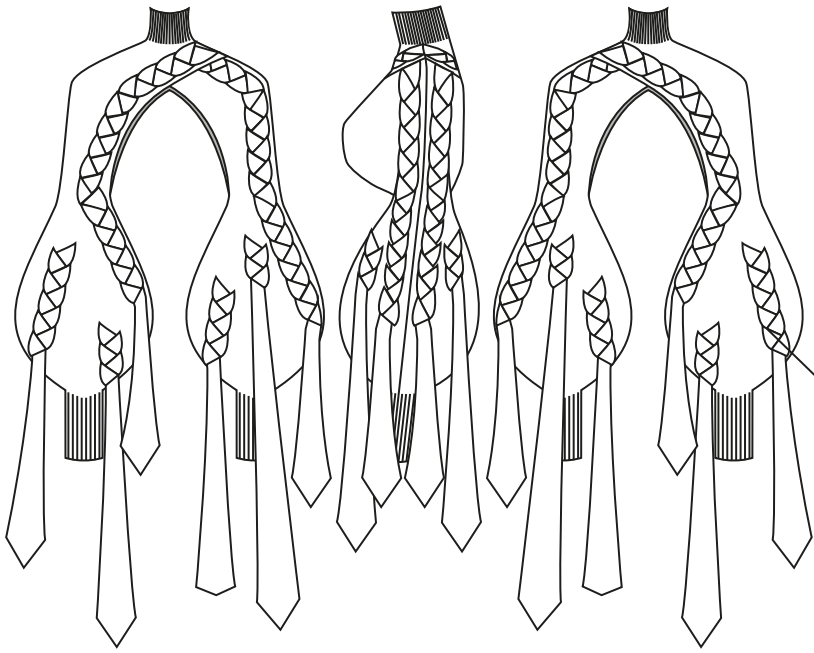
invisible stitch

Ref: #PL4



Ref: #T9

Ref: #M2



Ref: #AL3
Ref: #T2 Ref: #T12

lining

bellowa pocket

Ref: #CAL3
Ref: #M4

tie woven

belt loop

Ref: #PL3
Ref: #T11

front pleat

plastic button

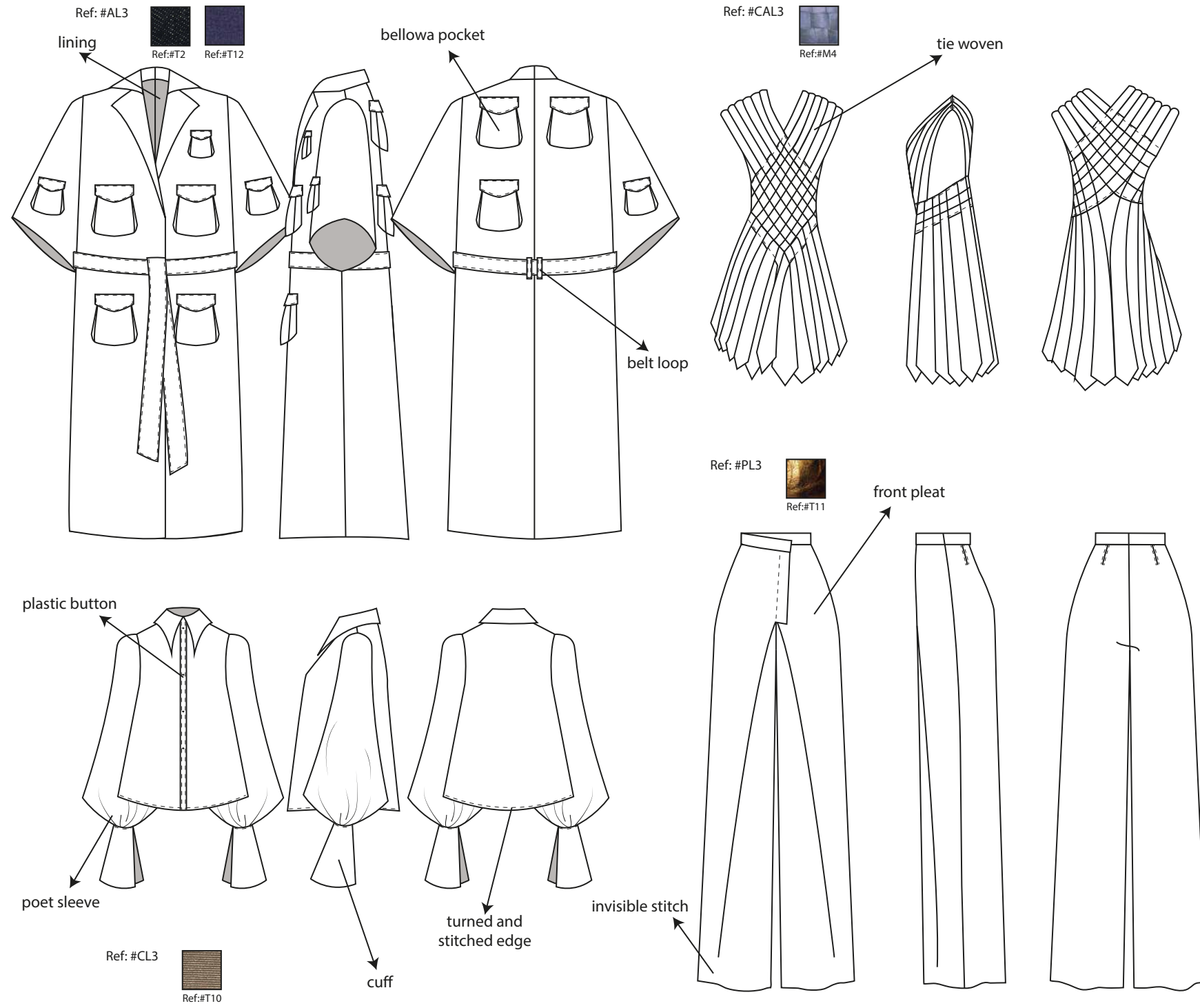
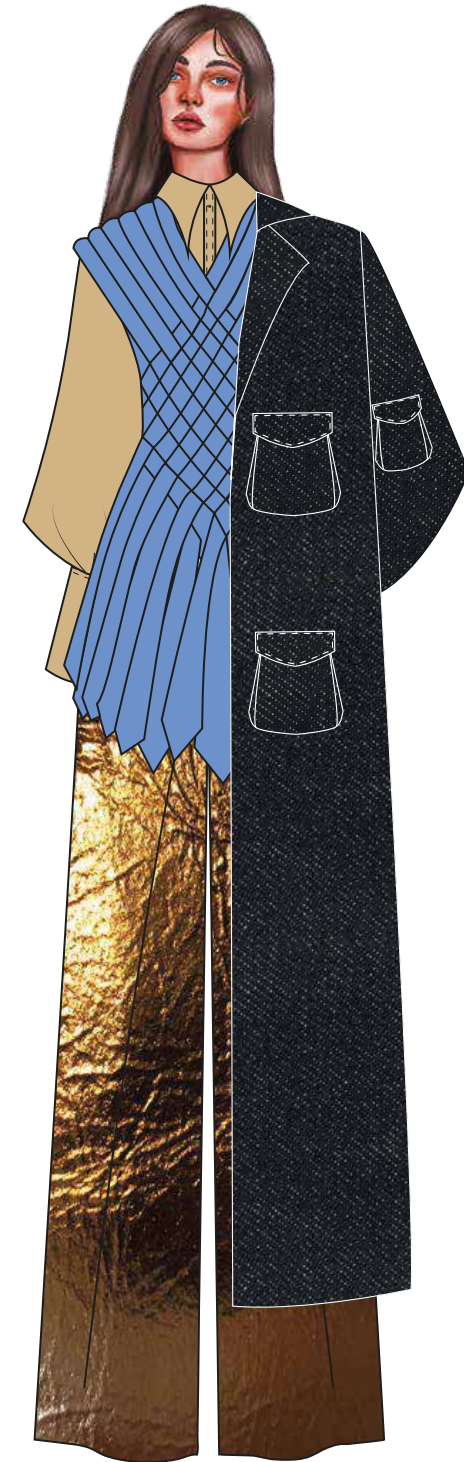
poet sleeve

cuff

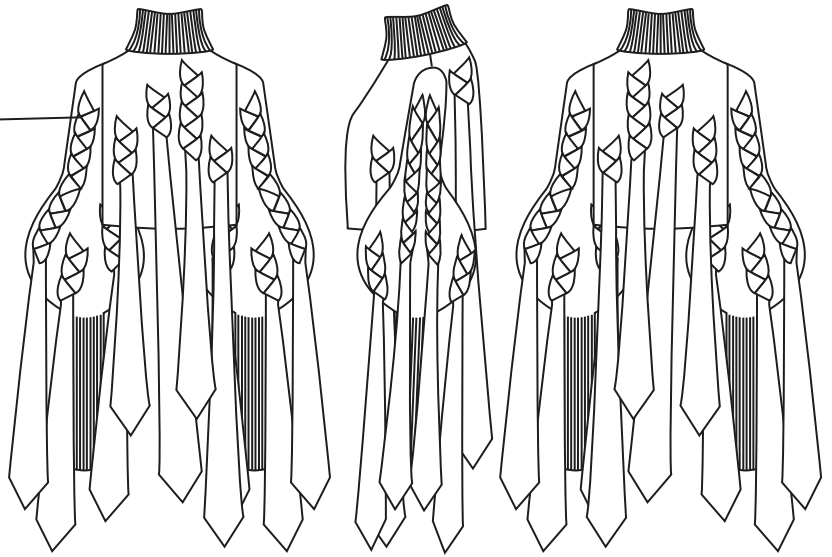
turned and stitched edge

invisible stitch

Ref: #CL3
Ref: #T10



tie in wool

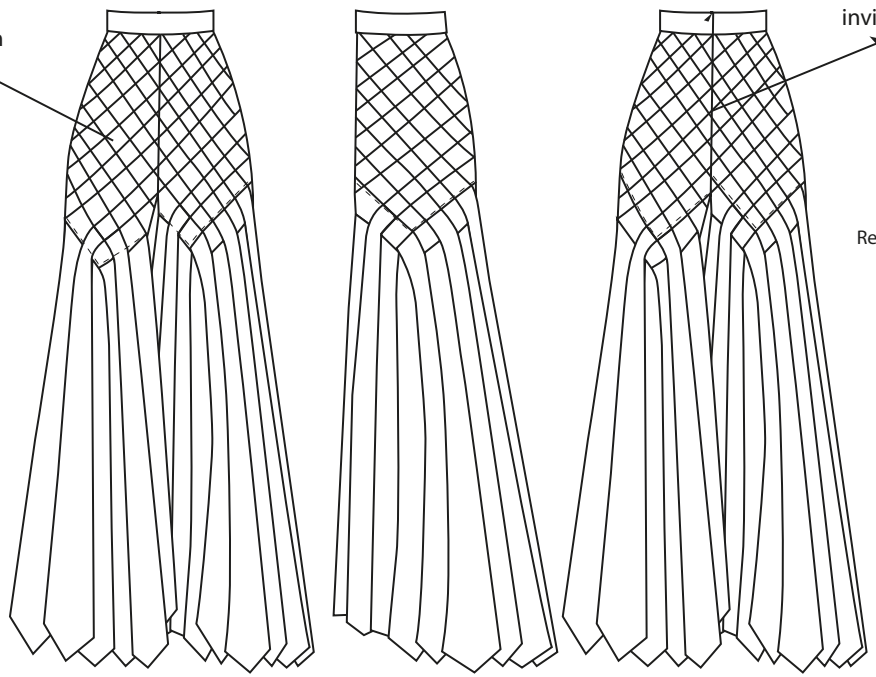


Ref: #TL6



Ref: #TR1

tie woven



invisible zipper

Ref: #PL6



Ref: #M3

