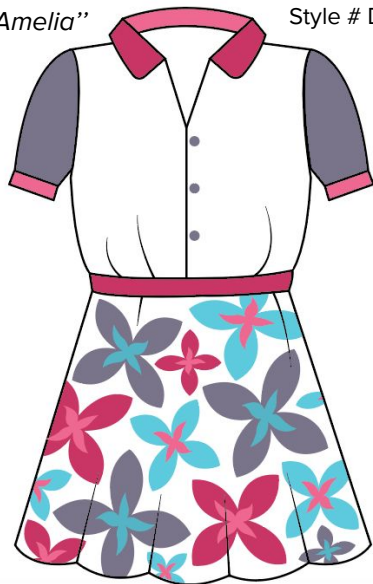


*Notes: Colours are the base colours, flower colours remains the same as shown on the line list.

"Amelia"

Style # DRA101



Delivery: 7/15 - 8/30 **Cancellation:** 6/30

Cost: \$19.35

Retail: \$38.70

Sizes: 2 to 6x

Fabrication: 100% Viscose

Colours:



"Janice"

Style # JEA102



Delivery: 7/15 - 8/30 **Cancellation:** 6/30

Cost: \$26.45

Retail: \$52.90

Sizes: 2 to 6x

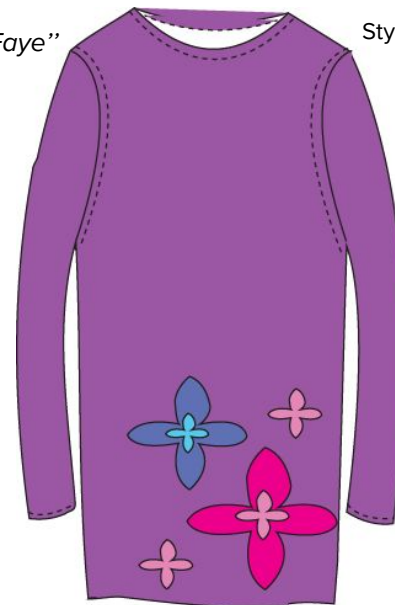
Fabrication: 80% cotton/18% polyester/2% spandex

Colours:



"Faye"

Style # DRA103



Delivery: 7/15 - 8/30 **Cancellation:** 6/30

Cost: \$21.35

Retail: \$42.70

Sizes: 2 to 6x

Fabrication: 60% cotton/40% acrylic

Colours:



“Pippa”

Style # OVA104



Delivery: 7/15 - 8/30 **Cancellation:** 6/30

Cost: \$35.45

Retail: \$70.90

Sizes: 2 to 6x

Fabrication: 80% cotton/18% polyester/2% spandex

Colours:



“Elsa”

Style # DRA105



Delivery: 7/15 - 8/30 **Cancellation:** 6/30

Cost: \$ 30.36

Retail: \$ 60.72

Sizes: 2 to 6x

Fabrication: 85% cotton/15% polyester

Colours:

