



F A S H I O N D E S I G N



@carmenfdesign



+34 677749123



cmartnez8@gmail.com

THESIS COLLECTION-REHTSE

ILLUSTRATION



THESIS COLLECTION-REHTSE

PLANNING

LOOK 1	LOOK 2	LOOK 3	LOOK 4	LOOK 5	LOOK 6	LOOK 7	LOOK 8
Ref CA001 Ref FAD02	Ref CAD11 Ref FAD02	Ref CA004 Ref FAD02 Ref FAD04	Ref CAD21 Ref FAD02	Ref CA023 Ref FAD06 Ref FAD01	Ref CAD37 Ref FAD02	Ref CAD41 Ref FAD02	Ref CAD49 Ref FAD02
Ref CA002 Ref FAD01	Ref CA013 Ref FAD01	Ref CA005 Ref FAD02	Ref CAD26 Ref FAD02	Ref CA024 Ref FAD07	Ref CAD38 Ref FAD02	Ref CAD46 Ref FAD05	Ref CAD50 Ref FAD07
Ref CA003 Ref FAD02	Ref CA012 Ref FAD03 Ref FAD02	Ref CA006 Ref FAD01	Ref CAD20 Ref FAD07	Ref CAD25 Ref FAD06	Ref CAD39 Ref FAD02	Ref CAD43 Ref FAD02	Ref CAD51 Ref FAD02 Ref FAD07
Ref CA007 Ref FAD02	Ref CA014 Ref FAD02 Ref FAD03	Ref CA007 Ref FAD03	Ref CAD22 Ref FAD07	Ref CA024 Ref FAD02	Ref CAD40 Ref FAD05	Ref CAD48 Ref FAD08	

Tecnical Sheet

Article: Half leather jacket.

Season: F/W 2021

Sizes: 34,36,**38**,40,42,44

Reference: GA037

Trimmings: Ref. EY001, Ref. BU001

Fabrics:

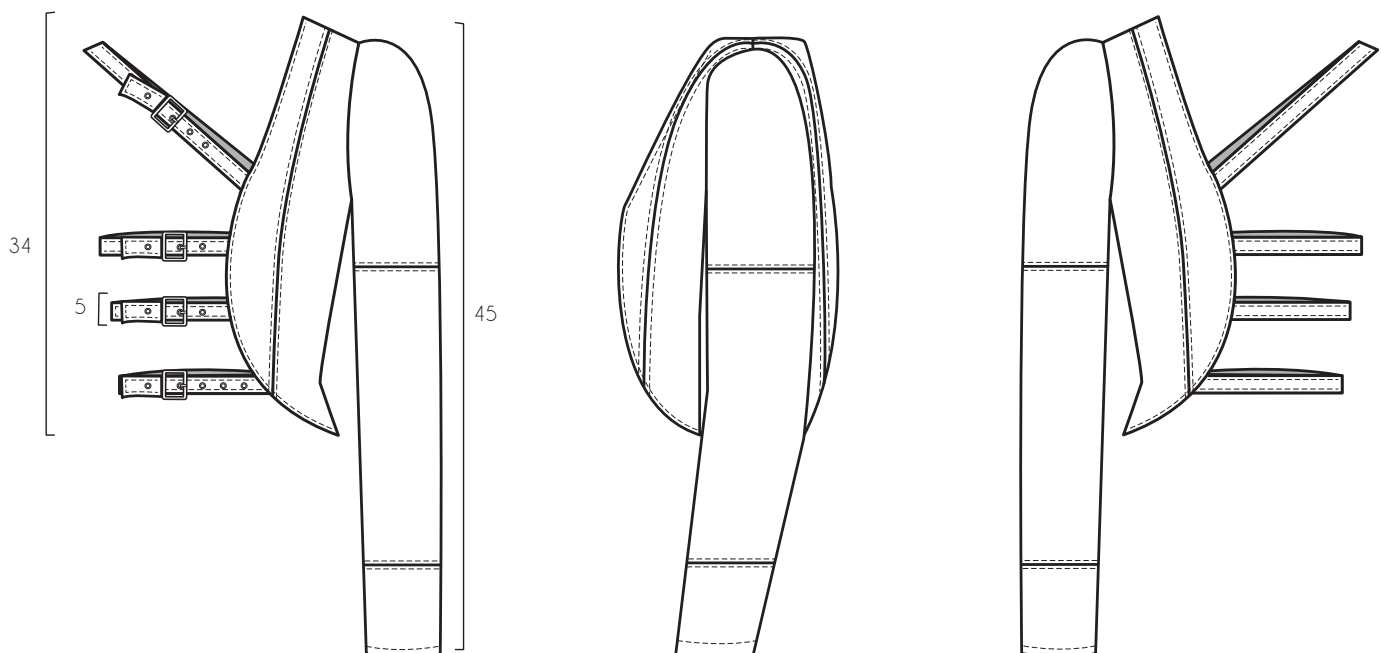


Ref. FA002

Observations: 1cm seam in the leather strips, and the outline body. Double edge stitching in the body seams and in the sleeve seams. 3cm hem down sleeve.

Description: Half narrow jacket. Half of the jacket composed by two pieces. Long narrow sleeve, with two seams in it. The other half of the jacket it's composed by four leather strips with eyelets and a buckle, to adjust to the body. Hem down in the sleeve.

Measurements en cm



Technical Sheet

Article: Long frill skirt
Season: F/W 2021
Sizes: 34,36,**38**,40,42,44

Reference: GA040

Trimings: Ref. GM002

Fabrics:

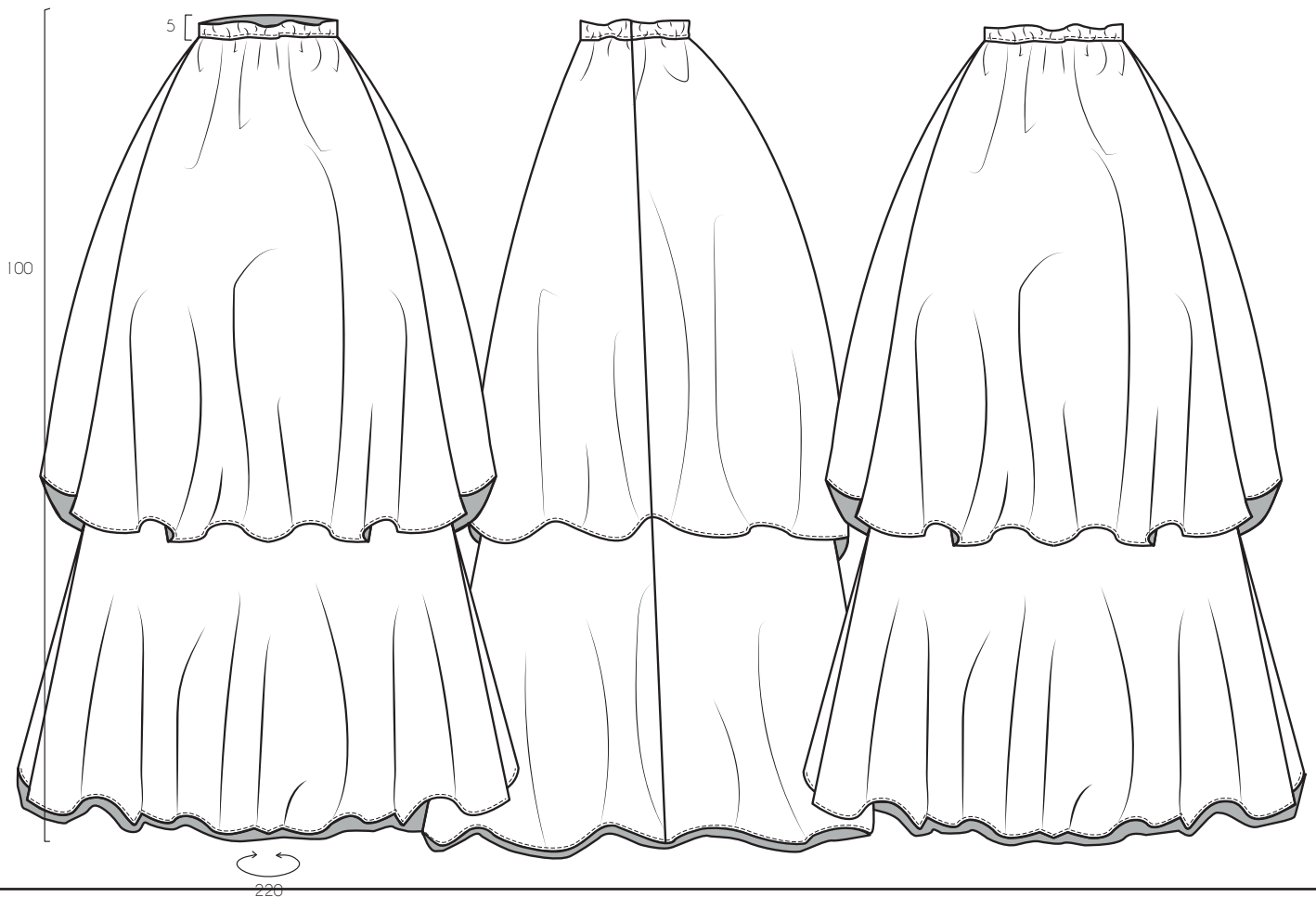


Ref. FA005

Observations: Double edge stitching in the waistband with the elastic rubber. 3 cm skirt hem down.

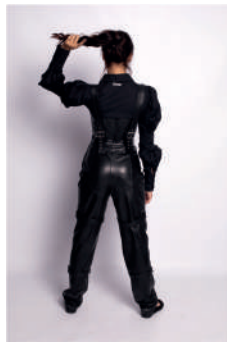
Description: Semi-circular skirt maxi length. With waistband and elastic rubber in the waistband. Skirt with two layers of frills. Hem down.

Measurements en cm



THESIS COLLECTION-REHTSE

LOOKBOOK





THESIS COLLECTION-REHTSE
SHOOTING















