

LIGHTING PRESENTATION



<https://www.pinterest.com/pin/490822059361297547/>



<https://www.pinterest.com/pin/340162578080650609/>

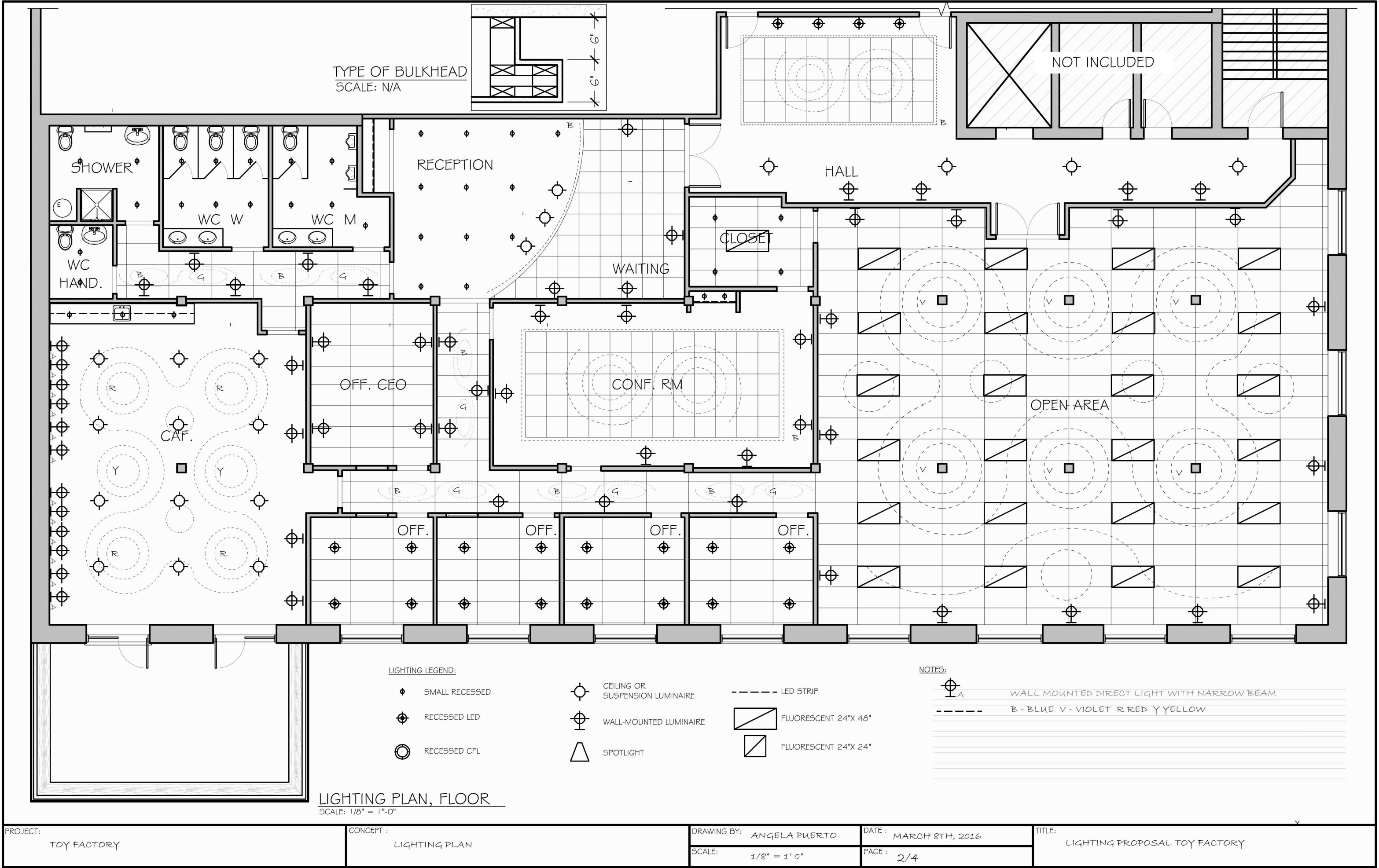
TOY FACTORY

LIGHTING PLAN P. 2/4

EXPLANATION P. 3/4

LIGHTING FIXTURES P. 4/4

PROJECT: TOY FACTORY	CONCEPT : PRESENTATION	DRAWING BY: ANGELA PUERTO	DATE : MARCH 7TH 2016	TITLE: LIGHTING PROPOSAL TOY FACTORY
		SCALE: 1/8" = 1' 0"	PAGE : 1/4	



EXPLANATION TEXT

RECEPTION

IN ORDER TO PROVIDE AN INVITING AND WARM AMBIANCE, THE GENERAL LIGHTING OF THE RECEPTION AREA WILL BE DEFINED BY SMALL RECESSED LEDS EMITTING A HIGH INTENSITY WARM WHITE LIGHT. OVER THE WORKING AREA, THREE PENDING AND COLOURFUL LUMINAIRES WILL SERVE AS TASK LAMPS AND AS SUPPORT LIGHTING FOR THE EMPLOYEE'S WELL-BEING. THE COMBINATION OF BOTH SETS OF LIGHTS WILL CREATE A COMFORTABLE AND APPROPRIATE LIGHTING FOR EMPLOYEES. THE BULKHEAD WILL BE LIGHTENED WITH A BLUE LED STRIP TO ADD COLOUR AND DYNAMISM TO THE SPACE.

WAITING

TO PROVIDE GENERAL LIGHTING TO THE WAITING AREA, FOUR RECESSED LEDS WILL BE INSTALLED AND WILL BE CONTROLLED WITH AN AUTOMATIC CONTROL SYSTEM, SO THE AMOUNT OF LIGHTING CAN BE PROPERLY REGULATED WITH THE EXTERIOR LIGHT, CREATING A SMOOTH TRANSITION BETWEEN THE TWO ENVIRONMENTS.

THE WAITING AREA ALSO REQUIRES A WARM AMBIANCE THAT WILL BE GIVEN BY FOUR WALL MOUNTED LUMINAIRES THAT OFFER DIRECT AND INDIRECT LIGHTING. THE LIGHTING FIXTURES WILL BE MADE IN WOOD TO WORK WITH THE COMPANY'S ARCHITECTURAL FEATURES AND TO ADD WARMTH TO THE AREA.

MAIN HALLWAY

THE MAIN HALLWAY WILL BE EQUIPPED WITH FOUR BLUE CEILING MOUNTED LUMINAIRES THAT CONTAIN 5 HIGH INTENSITY WARM WHITE LAMPS EACH, AND WILL BE DIRECTED TOWARDS THE WALLS TO ENHANCE THE ART EXHIBITIONS.

ON THE NORTH WALL OF THE HALLWAY, THREE WOODEN WALL MOUNTED LUMINAIRES WILL OFFER DIRECT AND INDIRECT LIGHTING FOR THE ELEVATOR ENTRANCE AND THE MECHANICAL ROOMS, TO GIVE AN INVITING SENSE TO THE HALLWAY.

A BLUE LED STRIP AROUND THE BULKHEAD WILL DRAW ATTENTION TO THE TOY EXHIBITION AREA LOCATED IN THE NORTH OF THE HALLWAY. THIS LED STRIP WILL BE ACCOMPANIED BY 8 SMALL RECESSED FLEXIBLE LEDS TO BE DIRECTED TOWARDS THE TOYS EXHIBITIONS AND ART. THESE LIGHT FIXTURES WILL BE DISCRETE IN ORDER TO DRAW ATTENTION TOWARDS THE TOYS EXHIBITED AND NOT TOWARDS THE LUMINAIRE.

PHOTOCOPY ROOM

SINCE THE COMPANY'S PURPOSE IS TO DESIGN AND MANUFACTURE TOYS, A FLUORESCENT 24 X 48 IN THE CENTER OF THE ROOM WILL OFFER LIGHTING TO CLEARLY VISUALIZE THE QUALITY OF THE DESIGN PLANS AND DOCUMENTS PRINTED. IN ADDITION, FOUR SMALL RECESSED LUMINAIRES WILL SUPPORT THE LIGHTING BY BEING LOCATED IN EACH CORNER OF THE ROOM.

CONFERENCE ROOM

THE CONFERENCE ROOM WILL BE EQUIPPED WITH HIGH INTENSITY WHITE LED STRIPS, DESIGNED OVER THE DROP CEILING AND ACCOMPANIED BY A BLUE LED STRIP SURROUNDING THE BULKHEAD. THIS BLUE LIGHT WILL CONTRIBUTE TO AN ENERGETIC AND DYNAMIC AMBIANCE THAT ENHANCES THE WORKERS CREATIVITY AND WELL-BEING DURING STAFF MEETINGS.

ADDITIONALLY, 7 WOODEN WALL MOUNTED LUMINAIRES WILL PROVIDE DIRECT AND INDIRECT LIGHTING TO THE ROOM, OFFERING WARMTH AND A WELCOMING ATMOSPHERE FOR VISITORS. THE SMALL COUNTER ON THE NORTH OF THE SPACE WILL HAVE TWO SMALL DIRECT RECESSED LIGHTS, ENOUGH LIGHTING FOR DOCUMENT STORAGE OR EVEN A COFFEE MACHINE.

TO COMPLETE THE LIGHTING IN THE CONFERENCE ROOM, THE EAST WALL WILL CONTAIN THE LOGO'S COMPANY SURROUNDED BY A WHITE LED LIGHT. THIS LIGHT ENSURES A SENSE OF BELONGING TO THE SPACE.

OFFICES

SINCE THE OFFICES HAVE A NATURAL LIGHT SOURCE COMING FROM THE WINDOW, THE DESIGNED LED LIGHTS WILL NOT BE INSTALLED. HOWEVER, IT DOES REQUIRE SUPPORT LIGHTING DURING THE DAY AND PROPER LIGHTING AT NIGHT THAT WILL BE PROVIDED BY HIGH INTENSITY RECESSED LIGHTS.

IN ADDITION TO THESE LUMINAIRES, EACH OFFICE REQUIRES LIGHTING SUPPORT THAT WILL BE GIVEN BY TASK LAMPS. THESE LAMPS WILL ALSO CONTRIBUTE TO A JOYFUL AND DYNAMIC AMBIANCE.

EACH OFFICE WILL ALSO CONTAIN THE COMPANY'S LOGO SURROUNDED BY A WHITE LED LIGHT FOR A SENSE OF BELONGING, AND IT WILL BE INSTALLED ON THE EAST WALL OF EACH OFFICE.

CEO OFFICE

THE CEO OFFICE DOES NOT HAVE ANY NATURAL LIGHT SOURCE. FOR THIS REASON, A DESIGNED WHITE LED STRIP WILL BE INSTALLED TO PROVIDE PROPER LIGHTING AND ELEGANT DESIGN.

IT WILL ALSO BE EQUIPPED WITH 4 WOODEN WALL MOUNTED DIRECT AND INDIRECT LIGHTINGS TO CREATE A WARM ATMOSPHERE TO RECEIVE CLIENTS AND EMPLOYEES, AND FOR RELAXING READING SPACES.

THE CEO OFFICE WILL ALSO CONTAIN THE COMPANY'S LOGO SURROUNDED BY A WHITE LED LIGHT TO ENSURE A SENSE OF BELONGING.

CIRCULATION AREAS BETWEEN OFFICES

WHITE LED STRIPS PREVAILING, AND ALTERNATED GREEN, VIOLET AND BLUE LED STRIPS WILL BE INSTALLED IN CURVES THROUGHOUT THE CIRCULATION AREAS, THESE LUMINAIRES PROVIDE ENOUGH LIGHTING FOR SAFETY BY ADDING A TOUCH OF DYNAMISM AND ENERGY WITH THE COLOURED LEDS.

IN ORDER TO MAKE SURE THERE WON'T BE SHADOWS THAT REDUCE SAFETY, WOODEN WALL MOUNTED LUMINAIRES WILL ALSO BE INSTALLED. THESE WALL MOUNTED FIXTURES WILL ALSO PROVIDE A WARM AND AESTHETIC AMBIANCE, CREATING TRANSITIONAL AREAS OF REST WHILE WALKING FROM ONE ROOM TO ANOTHER.

OPEN AREA

THE OPEN AREA WILL BE LIT WITH A DESIGN CREATED WITH COOL WHITE, BLUE AND VIOLET LED TO PROVIDE PROPER GENERAL LIGHTING TO THE AREA AND BEING FUNCTIONAL FOR WORKSTATIONS. THIS CURVED DESIGN FLOODS THE SPACE OF WHITE LIGHT WITH A FUN AND DYNAMIC APPEARANCE BY ENHANCING THE WOODEN POSTS OF THE ARCHITECTURE. THE VIOLET COLOUR WILL ENHANCE THE WORKERS CREATIVITY AND IMAGINATION, WHILE THE BLUE COLOUR WILL CONTRAST TO ENHANCE A DYNAMIC AND ENERGETIC AMBIANCE. THE DESIGN IS CREATED IN A WAY, THAT LIGHT SURROUNDS EACH PINE POST ENHANCING ITS WOODEN FEATURES.

SINCE IT IS A LARGE SPACE, THE LIGHTING CIRCUIT WILL BE DIVIDED IN TO FOUR, FOR ENERGY EFFICIENCY PURPOSES. FOR EACH WORKSTATION, A SUPPORTING LIGHTING COMING FROM A TASK LAMP WILL BE REQUIRED. THE PROPOSED LIGHT FIXTURES PRESENT A JOYFUL DESIGN THAT MATCHES BOTH, THE ARCHITECTURE OF THE BUILDING, AND THE COMPANY'S MISSION. THEY ARE ALSO ENVIRONMENTALLY FRIENDLY, SINCE THEY ARE BUILT UP FROM RECYCLED MATERIALS.

CAFETERIA

THE CAFETERIA HAS A WIDE ENTRANCE OF NATURAL LIGHT ON THE SOUTH OF THE SPACE, WHICH OFFERS PROPER LIGHTING FOR THE EMPLOYEES DURING THEIR LUNCH BREAK. HOWEVER, THE WEST WALL IN THE CAFETERIA WILL BE EQUIPPED WITH 12 WALL MOUNTED DIRECT LIGHTS WITH NARROW BEAMS, TO PRODUCE A WATERFALL LIGHTING OVER THE BRICK WALL. THIS TYPE OF LIGHTING GIVES CHARACTER AND ENHANCES THE FEATURES OF THE BRICK, CREATING A RELAXING AND WARM AMBIANCE. FOUR WALL MOUNTED DIRECT AND INDIRECT LIGHTS ON THE EAST WALL WILL ALSO GENERATE INDEPENDENT, YET INTEGRATED WARM SPACES FOR EMPLOYEES TO READ AND RELAX.

THE COUNTER WILL BE LIGHTENED WITH THREE SMALL RECESSED LED LIGHTS TO ALLOW TH EMPLOYEES TO PERFORM THE REQUIRED TASKS, SUCH AS COOKING.






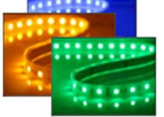



FOR EVENING GATHERING PURPOSES, WHETHER IF IT'S FOR STAFF PARTIES OR FOR SPECIAL TOY SHOWROOMS, THE GENERAL LIGHTING OF THE CAFETERIA WILL BE PROVIDED BY A DESIGNED INSTALLATION OF WHITE LED STRIPS. THESE LUMINAIRES WILL CREATE ENOUGH GENERAL LIGHTING FOR THE ENTIRE SPACE, WITH A TOUCH OF COLOUR TO INJECT ENERGY AND VITALITY TO THE ROOM.

WASHROOMS

EACH WASHROOM AND SHOWER WILL BE EQUIPPED WITH HIGH INTENSITY SMALL WHITE RECESSED LIGHTS. AROUND EACH MIRROR A WHITE LED STRIP IS TO BE INSTALLED, TO CREATE AN ENERGETIC REFLECTION AND VITAL AMBIANCE. THIS EFFECT WILL ALSO BE CREATED BY A WHITE LED STRIP ON THE CEILING, DELIMITING THE EACH ROOM'S BOUNDARIES.

PROJECT:	CONCEPT :	DRAWING BY:	DATE :	TITLE:
TOY FACTORY	EXPLANATION	ANGELA PUERTO	MARCH 7TH 2016	
		SCALE: 1/8" = 1' 0"	PAGE :	LIGHTING PROPOSAL TOY FACTORY
			3/4	

LIGHTING FIXTURES TABLE

PICTURE	SOURCE	DESCRIPTION	RECEPTION	WAITING AREA	MAIN HALLWAY	PHOTOCOPY ROOM	OPEN AREA	CONFERENCE ROOM	OFFICES	CEO OFFICE	CAFETERIA	CIRCULATION AREAS	WASHROOMS	SHOWER
	https://www.pinterest.com/pin/45599014953793080/	WOODEN WALL MOUNTED	0	4	3	0	0	7	0	4	4	11	0	0
	http://livingimpressive.com/2015/06/modern-lighting-fixtures/	CEILING MOUNTED	0	0	4	0	0	0	0	0	0	0	0	0
	http://www.lampsplus.com/products/intense-4-inch-cfl-clear-recessed-lighting-reflector-trim_26438.html	RECESSED CFL	0	0	0	4	0	2	16	0	0	0	13	3
	http://www.premierlighting.com/led-recessed-can-lighting/	RECESSED LED	12	4	4	0	0	0	0	0	0	0	0	0
	http://www.aliexpress.com/w/whole-sale-purple-light-shades.html	SUSPENSION LUMINAIRE	3	0	0	0	0	0	0	0	0	0	0	0
	http://www.ledstripsales.com/images/RGB-5050-300X-1P67/5050_SMD_300LEDS_RGB_WX	LED STRIPS	1 BLUE	0	2 BLUE	0	12 WHITE 4 BLUE	3 WHITE 2 BLUE	4 WHITE	4 WHITE	8 WHITE 4 BLUE	5 WHITE 3 BLUE 3 GREEN	3 WHITE	1 WHITE
	http://www.ebay.com/bnp/fluorescent-light	FLUORESCENT 12' X 24'	0	0	0	1		0	0	0	0	0	0	0
	https://www.pinterest.com/pin/340162578080650609/	TASK LAMPS	0	0	0	0	1 PER WORKING STATION	0	4	0	0	0	0	0
	http://www.sistemalux.com/en/products/version/minilife-led-1-narrow-beam/s---50674/24/56/2	DIRECT WALL MOUNTED	0	0	0	0	0	0	0	0	12	0	0	0

PROJECT:

TOY FACTORY

CONCEPT :

LIGHTING FIXTURES ABLE

DRAWING BY:

ANGELA PUERTO

DATE :

MARCH 7TH 2016

SCALE:

1/8" = 1' 0"

PAGE :

4/4

TITLE:

LIGHTING PROPOSAL TOY FACTORY