

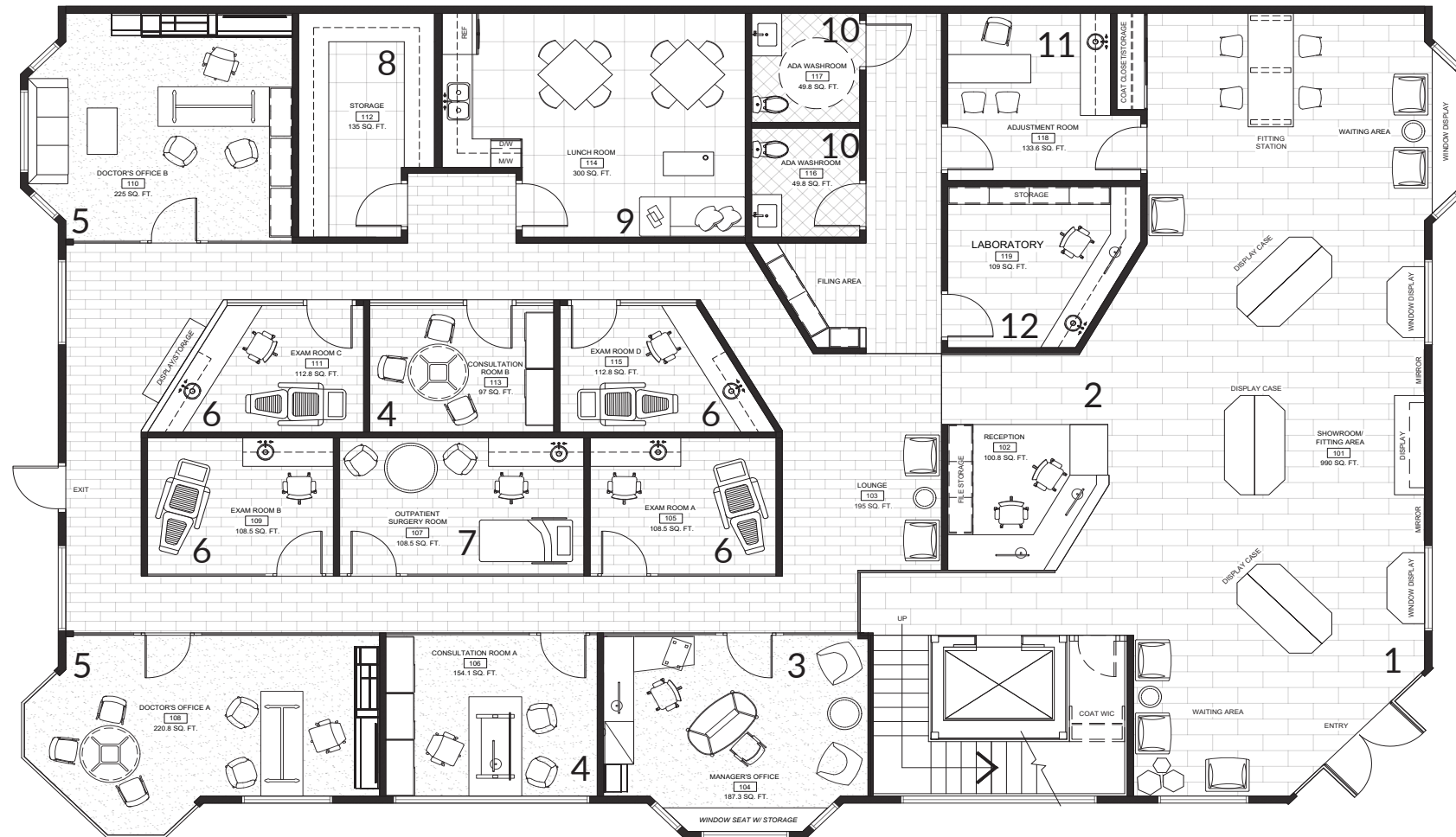
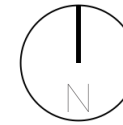


SPECTR EYE CLINIC

COMMERCIAL DESIGN

SPECTR EYE CLINIC

COMMERCIAL DESIGN



**TOTAL
SQUARE FOOTAGE**
4,950 SQ. FT.

- 1 SHOWROOM
- 2 RECEPTION
- 3 MANAGER'S OFFICE
- 4 CONSULTATION ROOM
- 5 DOCTOR'S OFFICE
- 6 EXAM ROOM
- 7 OUTPATIENT SURGERY ROOM
- 8 STORAGE ROOM
- 9 STAFF BREAKROOM
- 10 ACCESSIBLE WASHROOM
- 11 ADJUSTMENT ROOM
- 12 LABORATORY



ABOUT THE COMPANY + PROJECT LOCATION

SPECTR Eye Clinic is a private clinic that offers eye care services as well as eyewear and vision care products. The mission at SPECTR is to deliver the highest level of care to their clients. Thus, the company's commitment to continued education for their employees, the production of innovative and effective treatments and the practice of sustainable medical and business methods are the top priorities. The company's clients are seniors aged 65 and above as well as young families.

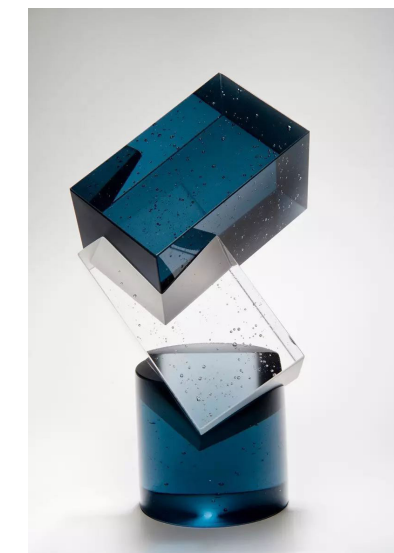
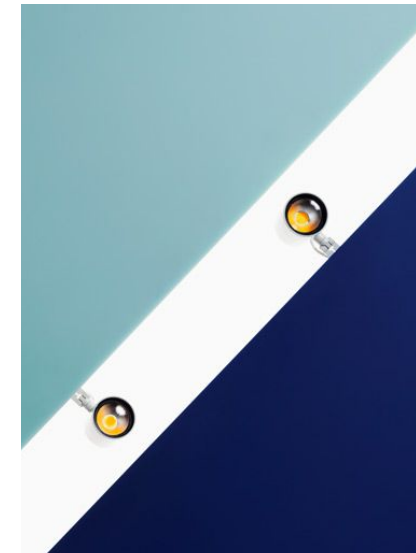
The project is a renovation of a 4,950 square feet commercial space in Lower Lonsdale, North Vancouver. The location boasts a waterfront view and is surrounded by several open community spaces that bring in both the local crowd and tourists. The neighbourhood is a home to recreational amenities, local shops and restaurants.

SPECTR EYE CLINIC

CONCEPT DEVELOPMENT

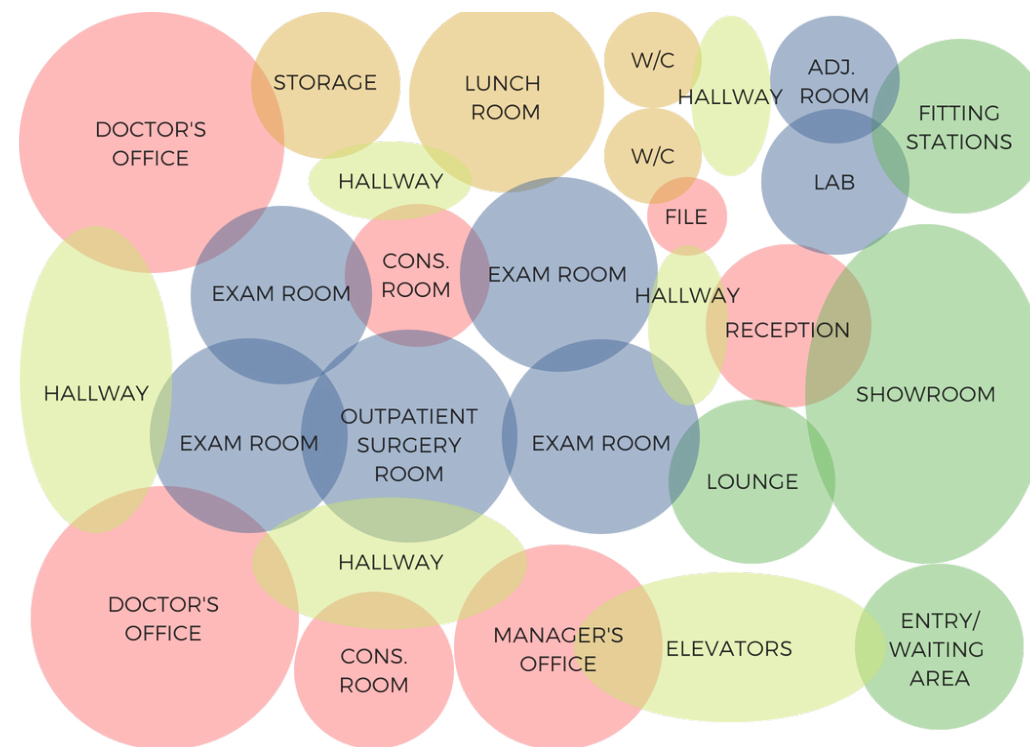
CONCEPT STATEMENT

Inspired by the idea behind a spectrum, the space is pulled together by the different hues of blues, contrast and shapes. All these elements are used in the selection of materials and finishes, as well as the design and functionality of the space. The design will bring in a variety of geometric and linear forms, light, and textures that define the space.



INSPIRATION PHOTOS

BUBBLE DIAGRAM



LEGEND

- ADMINISTRATIVE AREAS
- MEDICAL AREAS
- PUBLIC AREAS
- BACK OF HOUSE
- BUFFER



SHOWROOM AND FITTING STATIONS



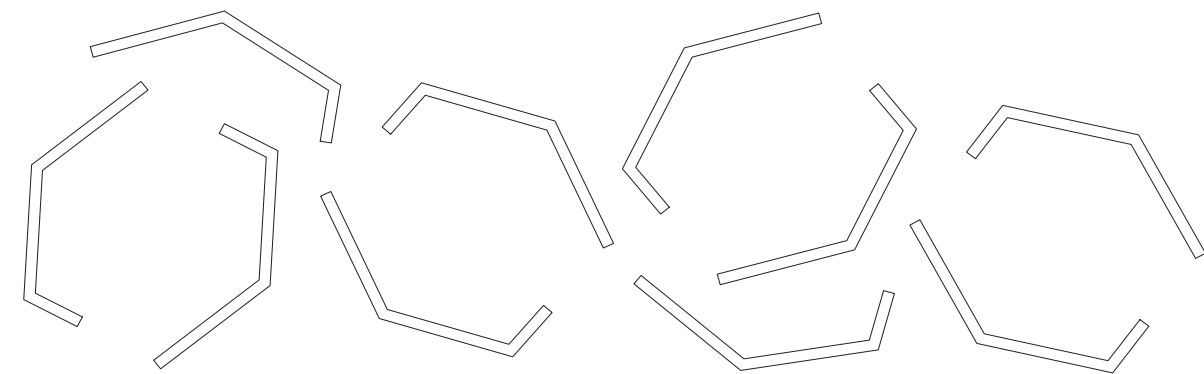
SHOWROOM, ENTRY AND WAITING AREA

RETAIL LAYOUT + CEILING DESIGN

THE FINISHES AND FIXTURES

Linearity and shapes play a big role in materializing the concept. The space features clean, structured lines that keeps the design easy to the eye as well as allowing for good circulation. The retail space is kept open so that there is a smooth flow of traffic in the area. Offices, storage, lunch, exam and consultation rooms are kept in the back to allow for maximum privacy for these areas.

The concept is also brought to the ceiling where it features the company logo design being incorporated. The ceiling features cove lighting and a deep marine blue finish that provides a good contrast to the finishes below it.



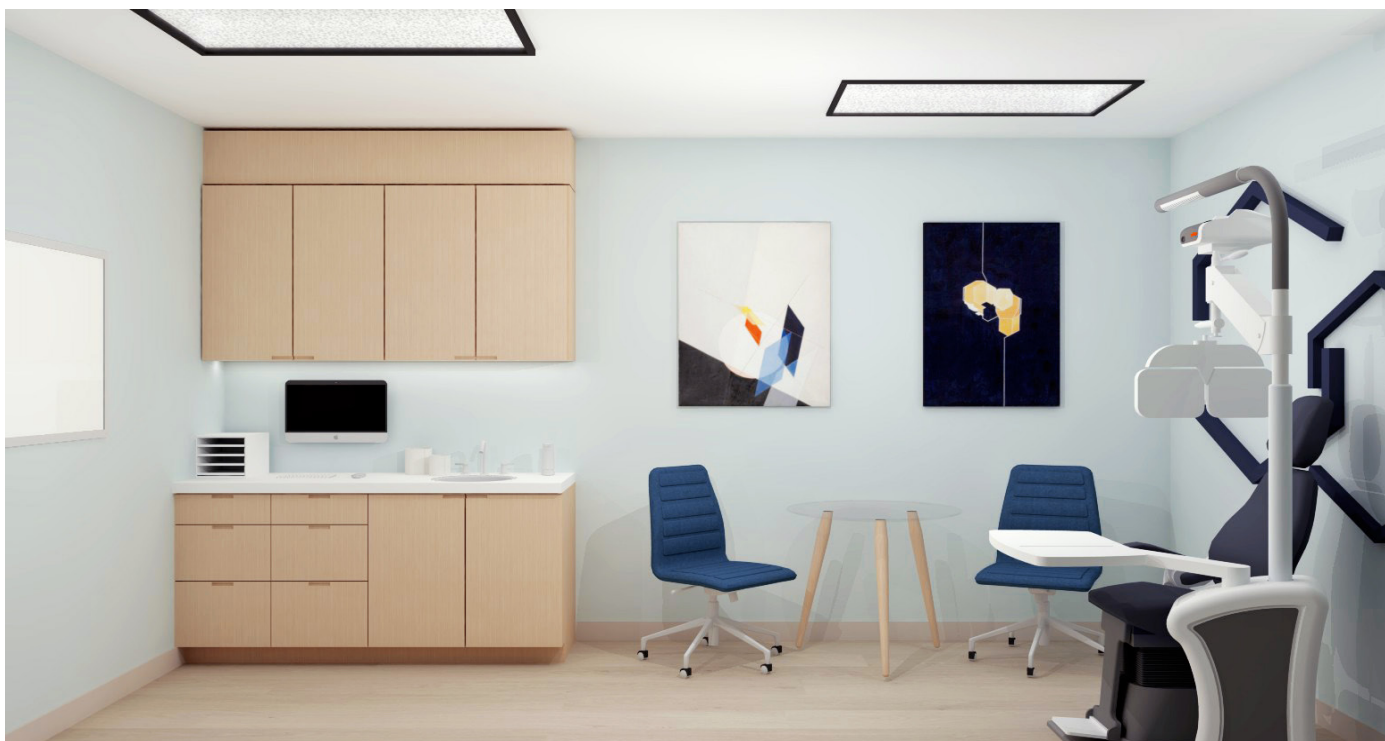
CEILING DESIGN



DOCTOR'S OFFICE



WAITING AREA AND RECEPTION



EXAM ROOM

FINISHES + MATERIALS

WALL, FLOOR & MILLWORK

The idea of spectrum was highly incorporated into the store layout, ceiling design and millwork displays. A variety of blues is used to maintain a colour theme. This colour theme is maintained all throughout the ceiling, walls and other millwork. Wood finishes for the millwork helps warm and soften up the space. The white walls balance out both the wood finishes and the dark blue ceiling.