

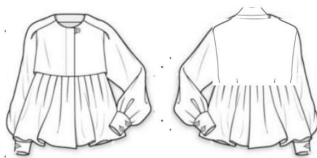


Catalogue

By Lisa Tran, Mackenzie Kennedy, Olivia Scandar and Emily Jorgensen

CAPSULE COLLECTION

LONG SLEEVE BLOUSE



Cost Price: 70\$

Wholesale Price: 84\$

Suggested retail price: 126\$



LEATHER JACKET



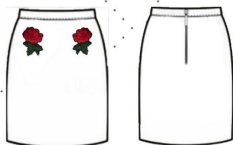
Cost Price: 125\$

Wholesale Price: 150\$

Suggested retail price: 225\$



TWO-TONED MINI SKIRT



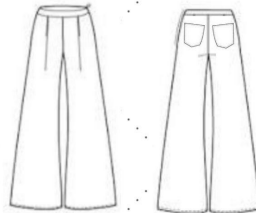
Cost Price: 75\$

Wholesale Price: 90\$

Suggested retail price: 135\$



FLARED PANT



Cost Price: 80\$

Wholesale Price: 108\$

Suggested retail price: 162\$



SWEATER



Cost Price: 55\$

Wholesale Price: 66\$

Suggested retail price: 98\$



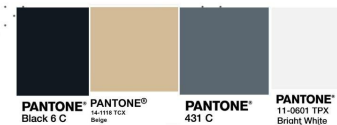
CROP TOP



Cost Price: 25\$

Wholesale Price: 30\$

Suggested retail price: 45\$



Lifestyle

Our collection reflects the bold and daring woman who is very dedicated to her work, but also likes to go out with her friends and have fun. She is free spirited and cares about world issues. She isn't afraid of what people think of her and is quite the dare-devil.



Lifestyle



Bold

"showing an ability to take risks; confident and courageous."

Lifestyle

I am
willing to
act in spite
of my fear.



Accessories

Masks\$ -
Masks\$ -



Why these masks?

This style is currently on trend because of the pandemic. Masks don't have to be plain and boring. These masks can add a more cohesive and dynamic look to any of the items in our collection.

Earrings - Earrings - Earrings -



Style #: 9001

Fabric: Brass with gold finish, acrylic pearls.

Price: \$75.00



Style #: 9002

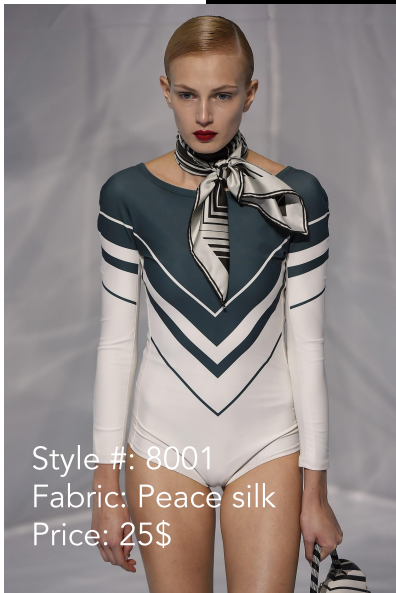
Fabric: Sterling silver, acrylic pearls

Price: \$80.00

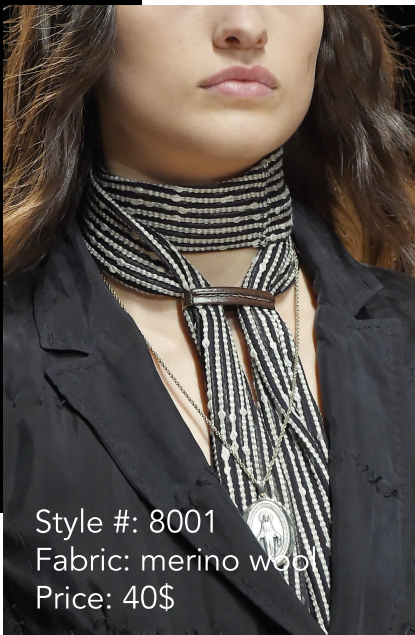
Why these earrings?

These earrings are very on trend. The first style is more of an everyday simple look whereas the second style is much more of a statement piece. They match with anything since they are a neutral colour and spice up any outfit.

Scarf
Scarf
Scarf



Style #: 8001
Fabric: Peace silk
Price: 25\$



Style #: 8001
Fabric: merino wool
Price: 40\$

Why these scarves?

This style can help make a casual working women look more stylish and professional. Black and white accessories can match with anything! These scarves can match well with our jacket and blouse in particular.

Wallets - Wallets - Wallets -



Style #: 10001
Fabric: Pineapple Leather pinatex
Price: 25\$

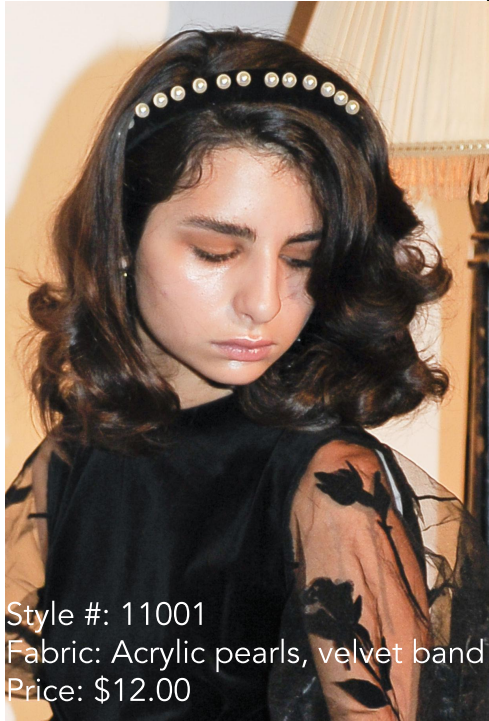


Style #: 10001
Fabric: Litchi leather
Price: 25\$

Why these wallets?

This style is made to look realistic and cohesive. It can go with any other leather product in our collection. Leather wallets can be easily combined with working clothes such as a chemises, blouse, skirt, etc to enhance a look overall.

Headpiece - Headpiece - Headpiece -



Style #: 11001

Fabric: Acrylic pearls, velvet band

Price: \$12.00



Style #: 11002

Fabric: Metal

Price: \$8.00

Why these headpieces?

These headpieces match very well with the other accessories in the collection. A new look to be added in a working class collection, there's a little bit of an edgy side to a headband too!

Sources

- All images for the accessory portion are from WGSN
- Information for accessories: sourced from websites like
 - <https://www.aritzia.com/>
 - <https://www.urbanoutfitters.com/en-ca/>
 - <https://www.harley-davidson.com/ca/en/index.html>
 - <https://www.thebay.com/c/women/jewellery-watches/jewellery>