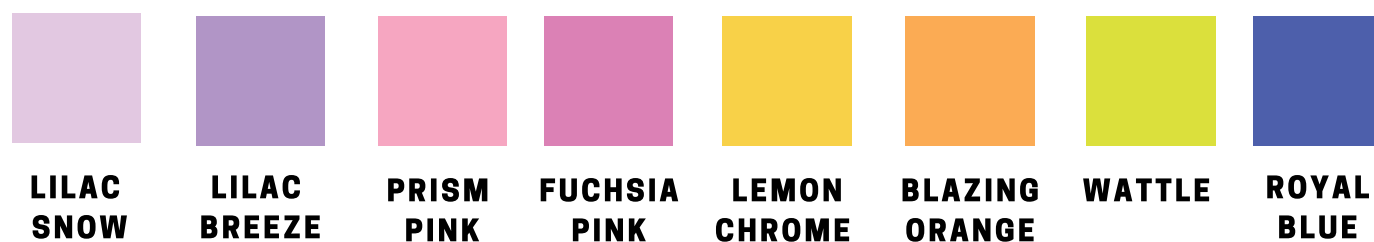


# TICO

## DORA THE EXPLORER



### COLOR PALETTE



Tico is one of the characters in the Dora the Explorer series. Dora the Explorer is an American animated television series written by Chris Gifford, and Eric Weiner, and produced by Valerie Walsh Valdes that premiered on Nickelodeon on 2000. The creators behind Dora set out to empower Latinx kids, normalize bilingualism and made the idea of not building barriers for Spanish-speakers as well as other non-white communities in 2000.

Tico is a four-year-old purple squirrel and a friend of Dora's who lives in the forest. The uniqueness of Tico is that he is very fluent in Spanish and very seldom speaks any English. He can operate a variety of vehicle, from helicopters to boats. He wears a colorful striped vest consisting of colors orange, magenta, dark violet, lime, and blue.

Tico's function on the show is to help Dora teach the audience words and phrases in Spanish. His first appearance was in "Hic-Boom-Ohhh", Before he became a squirrel, Tico was originally a dark blue skunk with red hair and a yellow belly in the unaired episode, "Pilot". Tico was first voiced by Muhammad Cunningham.

## TECHNICAL DRAWINGS



**FRONT**



**BACK**

## FABRIC SWATCHES



**LILAC BREEZE COTTON**



**DARK VIOLET COTTON**

## ACCESSORIES



**BUTTON**

# WINGSUIT BASE JUMPING

## EXTREME SPORT



### COLOR PALETTE



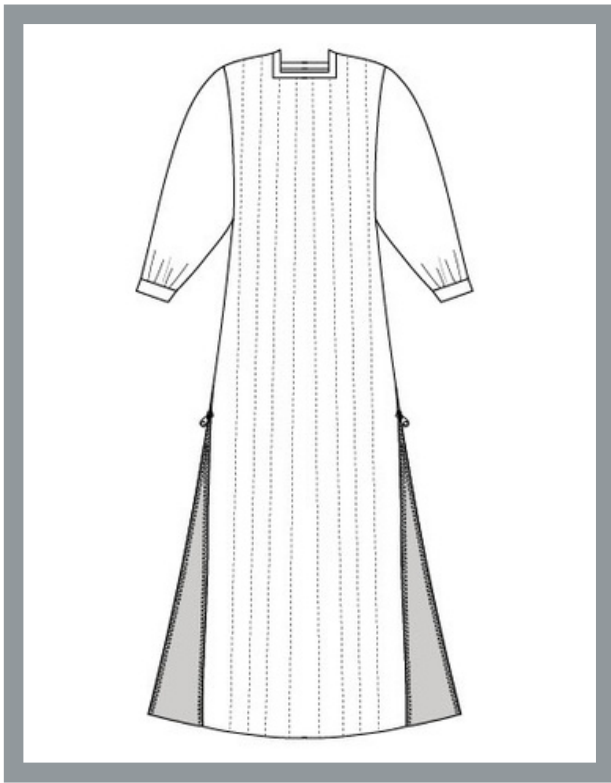
Wingsuit BASE jumping is one extreme sport that can be said to make the dream of people who want to try flying come true. This sport is the sport of flying through the air using a wingsuit which adds surface area to the human body to enable a significant increase in lift. Wingsuit BASE jumping quite similar to parachuting. The difference is that the landing time is shorter.

The word BASE is an acronym for Building (building), Antenna (antenna), Span (bridge), and Earth (earth) which all refer to cliffs. So to play a BASE sport you have to throw yourself from one of the BASE structures or it could be a plane.

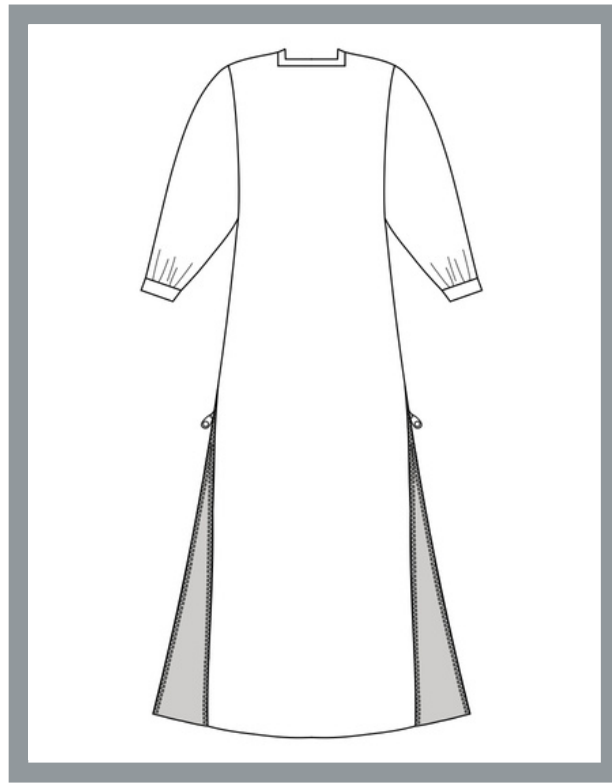
A wingsuit was first used in the US in 1930 as an attempt to increase horizontal movement and maneuverability during a parachute jump. The wingsuit comes with 2 wings that look like the body of a flying squirrel. The two wings function as controllers when flying. If the wings are opened wider, the flight speed will slow down.



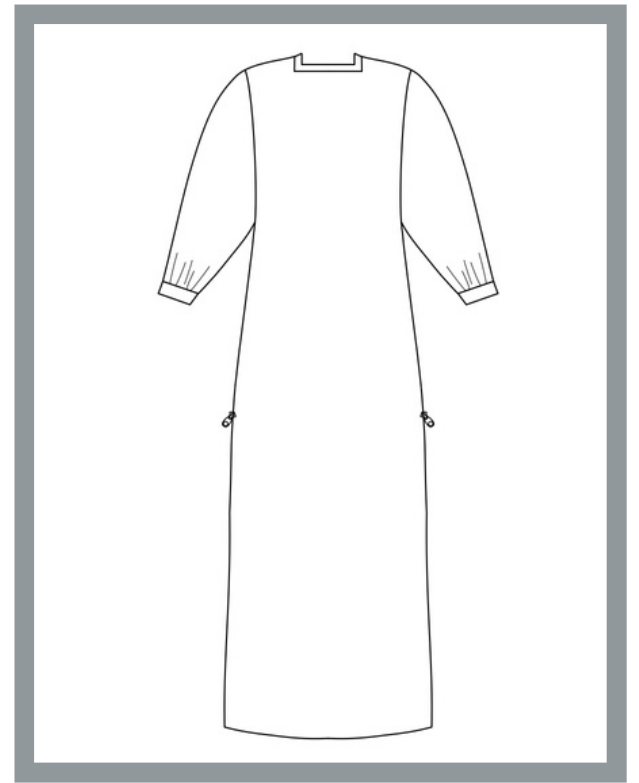
## TECHNICAL DRAWINGS



FRONT



BACK



CLOSED ZIPPER

## FABRIC SWATCHES



BLAC NAVY PARACHUTE

## ACCESSORIES



ZIPPER



STITCHES YARN

# PRINTED FABRIC

## GRAPHIC DESIGN

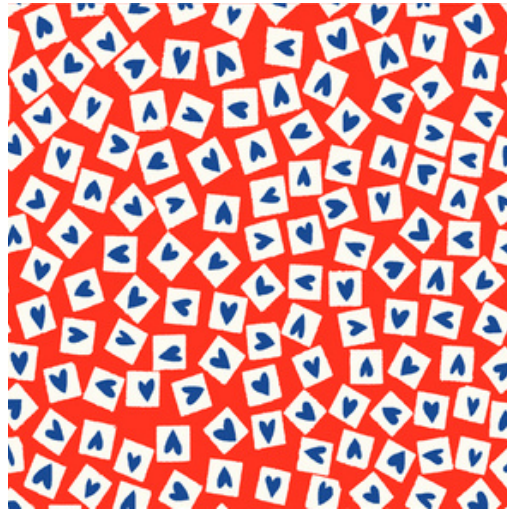
### PRINT INSPIRATION



#### BY MARIMEKKO

##### Marimekko "Pieni Unikko"

Unikko pattern symbolizing creativity. The Pieni Unikko print features small to medium-sized flowers.



#### BY MINAKANI

##### Minakani "Premiere Vision 2020"

Heart-shaped is the symbol of love and caring. The four sides of the square can symbolize the directions.



#### BY MINAKANI

##### Minakani "Blue Mint"

Blue mint is a mix of blue and green. This color can be a calming hue. Leaves are a symbol of life and growth.

### PATTERN OUTLINE





# COLOR INSPIRATION



Pablo Ruiz Picasso was a Spanish painter and sculptor. He is best known as the co-founder of cubism. The painting called Pablo Picasso's Femme au béret et à la robe quadrillée (Marie-Thérèse Walter).

The image of Marie-Thérèse brought an embodiment of femininity to the period of surrealism in Picasso's art. A feminine body looked bouncy and soft at the same time, while a vivid color offered a contrast to smooth contours.

## COLOR PALETTE

