

Did You Know?

**YOUR WASTE CAN BE
YOUR CLOTHES**

Anita Tendeana



LaSalle College
Surabaya

POLYOLEFIN

a strong stain resistant fiber

Polyolefin fibers are manufactured from Polyethylene and Polypropylene, the most commonly used plastic base materials in the world.



Polyethylene



Polypropylene



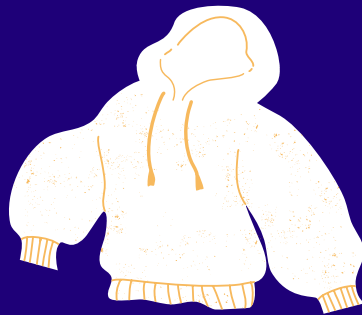
POLYOLEFIN

a strong stain resistant fiber

Advantages



Fast Drying



Warm sensation



Moisture wicking

Disadvantages



Non-
Biodegradable



Poor
dyeability



High
Flammability



POLYOLEFIN

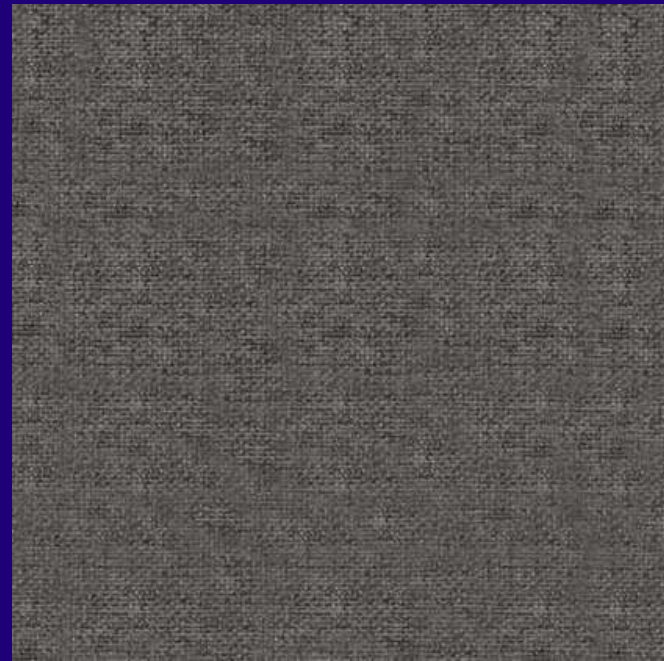
a strong stain resistant fiber

Polyolefin fiber are often blended with cotton.

Cotton



Cotton + Polyolefin



POLYOLEFIN

Fabric End Use

Active/Sport Wear



Thermal Underwear



Socks



Insulative Linings Outwear



The background of the image features a dense arrangement of various colored pens (purple, blue, green, yellow) oriented vertically. A large, bright yellow arrow points from the left towards the right, starting from the bottom left and extending towards the right edge. The text is overlaid on the left side of this arrow.

BUT
There's
More
Than
Clothes

**MORE ON THE
OTHER SIDE**

POLYOLEFIN

Besides for clothings, Polyolefin fibers can be used for Home Furnishing and Geo Textile.



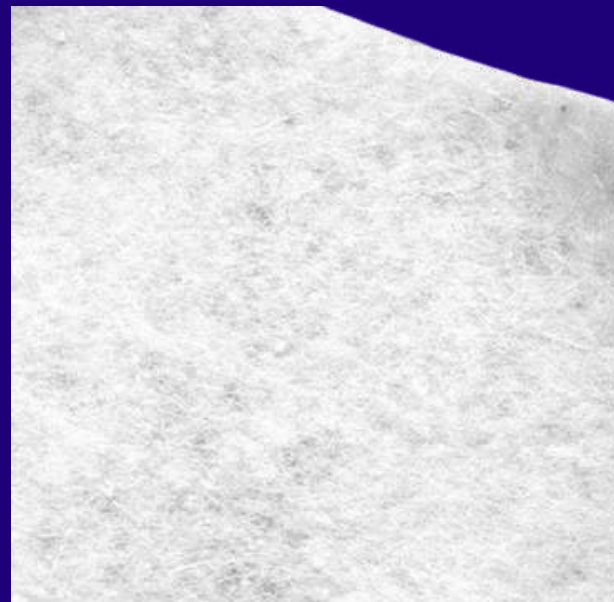
POLYOLEFIN

Fabric End Use

Wallpaper



Geo Textile





Don't Worry!

**The textile industry
continues to research
so that polyolefin can
be used as your clothes.**



Don't Throw Your Clothes!

Because Poliolefyn is non-biodegradable (can't be recycle). So, Give your clothes to people in need.