

BEA VALLES

INTERIOR DESIGN
PORTFOLIO

I believe emphasis, variety, unity and functionality are key to effective design. When tackling a project, it is best to know who is going to use the space and how it is going to be used. This approach better identifies the areas to focus on. A process complete with a timeline, budget, list of stakeholders and project details, has to be in place in order to complete a project smoothly and effectively.

EMPHASIS

Creating focal points in a room gives a room the attention it deserves. This could be achieved with the use of furniture, a feature wall, backgrounds and colour. These are elements of the space that capture the eye and leaves an impression.

VARIETY

Variation is important to give a space a sense of purpose, while evoking different feelings and atmospheres. This is achieved through the use of different colours, patterns, shapes and forms. It creates a space that has its own character.

UNITY

Unity is the thoughtful relationship of creating designs between rooms and spaces. This is accomplished through repetition and coordination, be it the use of finishes, forms and colours. This allows for a theme carry throughout a space.

FUNCTIONALITY

Space planning and programming has to be a top priority as this determines the efficiency and effectiveness of the space. Creativity does not have to compromise function to aesthetic. Minimalism is best to achieve this as it creates a space that easy to the eye yet maximizes function.

THE CONTENTS



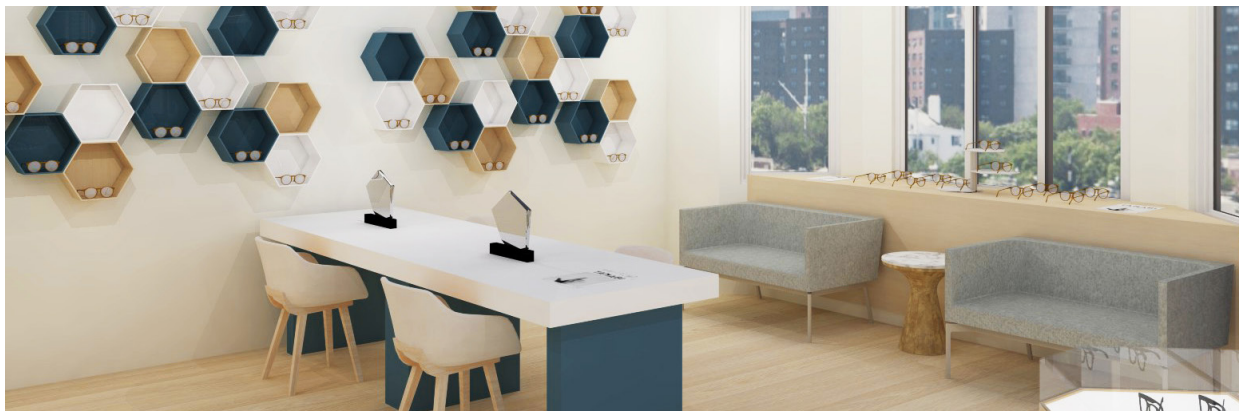
PROJECT 1: 360 RESIDENCES

Residential Design



PROJECT 2: KREW

Clothing Retail Design



PROJECT 3: SPECTR EYE CLINIC

Commercial Design + Technical Drawings

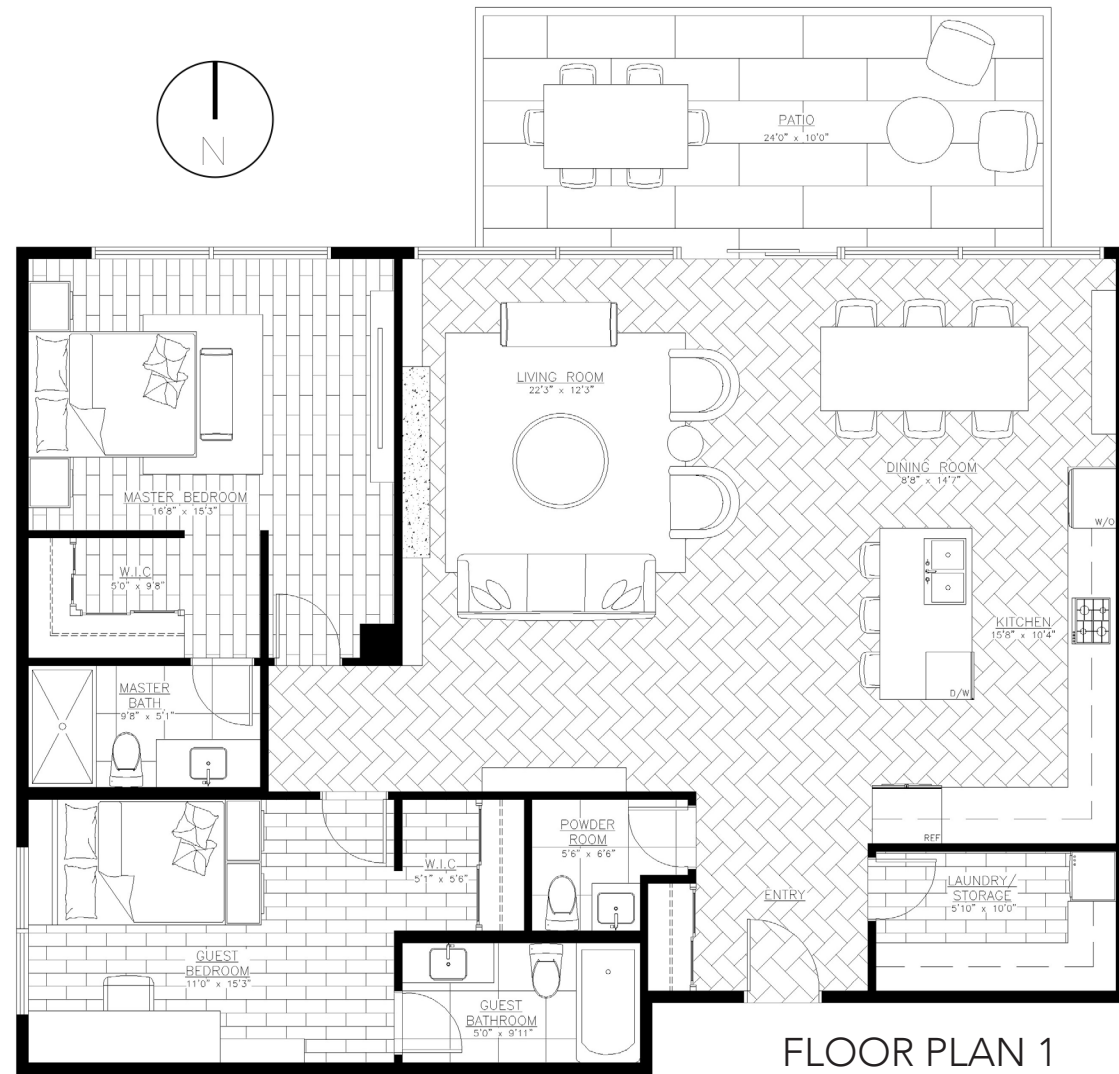


360 RESIDENCES

RESIDENTIAL DESIGN

360 RESIDENCES

RESIDENTIAL DESIGN



FLOOR PLAN 1

LOCATION: 1400 ROBSON ST., VANCOUVER

TOTAL SQUARE FOOTAGE
1,485 SQ. FT.

LIVING
22'3" x 12'3"

MASTER BEDROOM
16'8" x 15'3"

GUEST BEDROOM
11'0" x 15'3"

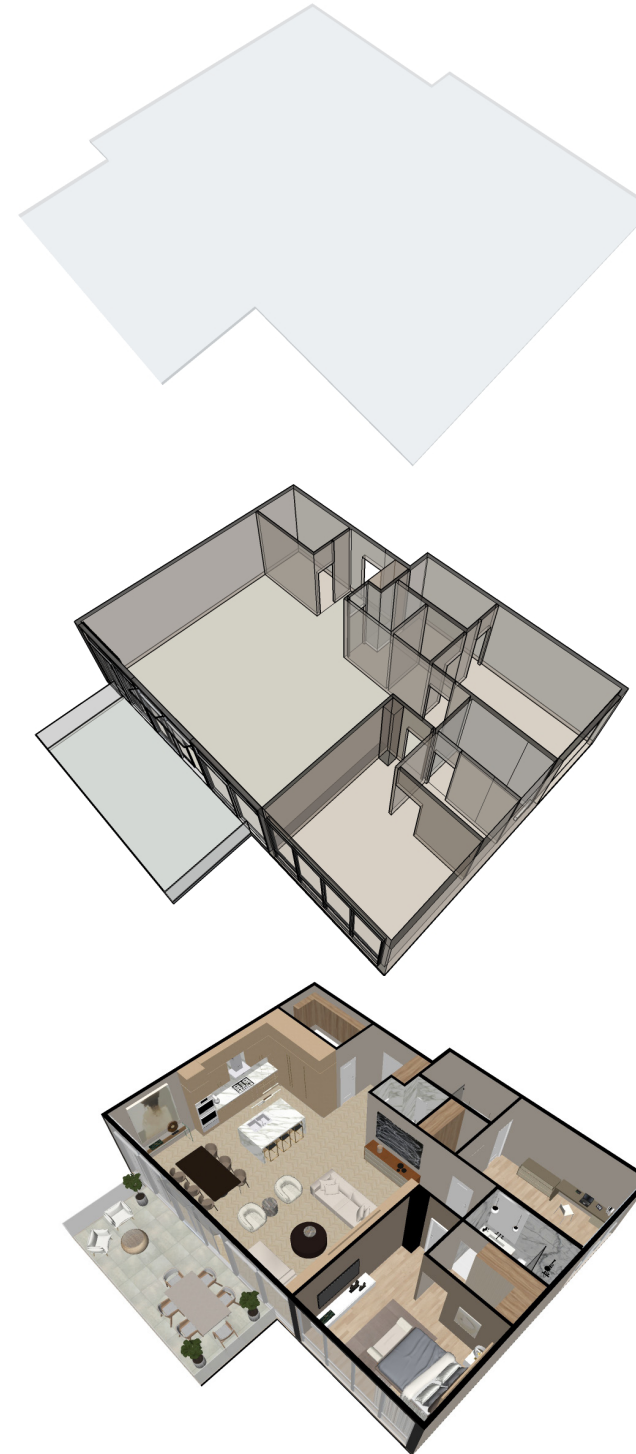
KITCHEN
15'8" x 10'4"

PATIO
24'0" x 10'0"

BATHROOMS
2 FULL BATHROOMS
1 POWDER ROOM

STORAGE
LAUNDRY +
STORAGE CLOSET

ISOMETRIC VIEW



DESIGN + INTERIOR FINISHES

360 Residences is located on Robson Street, Vancouver's prime shopping district. In 360 Residences, sophistication is coupled with function. This two-bedroom and powder room city home features an open concept living space with high ceilings, large windows and professional series appliances.

Influenced by designer Kelly Wearstler, the apartment features a bold-neutral palette with muted yet rich finished cabinetry, select materials including marble waterfall countertops and hardwood herringbone floors.



MUTED NEUTRALS
MILK OAK
WHITE LEATHER
METAL BLACK

COLOUR
PALETTE

OPEN + MID-CENTURY

THE LIVING ROOM

The space features an open layout between the living and dining room. Ceilings at 10 feet high and large windows allow for a bright and airy space, providing a generous amount of room. It makes a perfect place to gather friends and family or just enjoy a restful night in.

A radiant based hydronic system to heat floors is an important feature of the apartment. Unlike forced-air heating systems, this type of system allows warm air to rise up evenly throughout the floor thus keeping the coolest air in the ceiling. Homeowners are also able to adjust the temperature in different rooms, allowing for an energy- efficient home. Finally, the system is quiet as well as blower-free, thus minimizing dust and allergens.



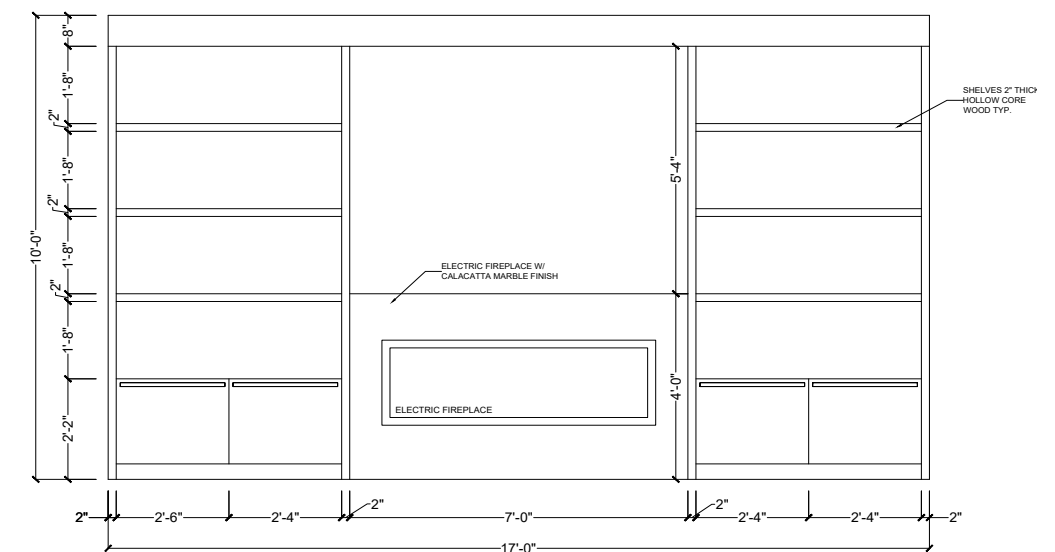
LIVING ROOM NORTH VIEW



LIVING ROOM SOUTH WALL VIEW



LIVING ROOM FIREPLACE AND MILLWORK



FIREPLACE AND DISPLAY CABINET ELEVATION

04

FORM + FUNCTION

THE KITCHEN

Shifting towards chic minimal lines coupled with bold-neutral finishes, the kitchen embodies a space that is warm and inviting. The kitchen features storage-friendly cabinetry made of premium wood veneered panels from Shinnoki. Fashioned with this is a Calacatta Gold Marble waterfall island with bar seating. This finish is carried to the back counter of the kitchen for a backsplash that maintains a sleek look throughout the space. The kitchen is equipped with premier appliances in stainless steel from Bosch and elegant, contemporary fixtures from Dornbracht and Aquabross.



KITCHEN FEATURING CALACATTA MARBLE AND SHINNOKI VENEERED PANELS



KITCHEN AND DINING PERSPECTIVE



KITCHEN AND ENTRY PERSPECTIVE



COMFORT + ELEGANCE

THE BEDROOM

Nothing is quite like waking up to a full view of the city. This Master Bedroom features full height windows, high ceilings and muted browns walls. The walls and ceiling are pulled together by a wood feature wall behind the bed. The overall look brings about a relaxing and serene space that is perfect for its main function: a place to unwind and sleep.

MASTER BEDROOM WINDOW VIEW

CLEAN + CLASSIC

THE BATHROOM

Truly, bathroom designs work best with simplicity. This Master Ensuite features floor to ceiling marble tiles combined with classic white large format porcelain floor tiles. The bathroom is finished with Brizo plumbing fixtures to keep sleekness and modernity.



MASTER ENSUITE



MASTER BEDROOM FEATURE WALL