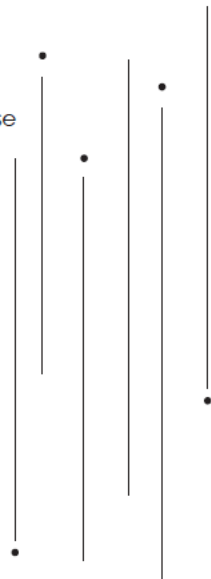


M E L
I S A
C H U I
F R A N C O

PORTFOLIO
2019

1 **Senior Project**

Teamakers Guest House



The Project

The Project consists in the design of a Guest House for Ozolini Teamakers in Latvia.

Surrounded by forest and its very own lake, the Teamakers Guest House is an ideal location for guests to restore their energy and reconnect with nature.

The Guest House will be constructed on an old Stone Barn to be renovated, and will include not only accommodation for guests, but also eco-friendly use of the space for guests to participate in tea-making workshops, meditation and yoga.

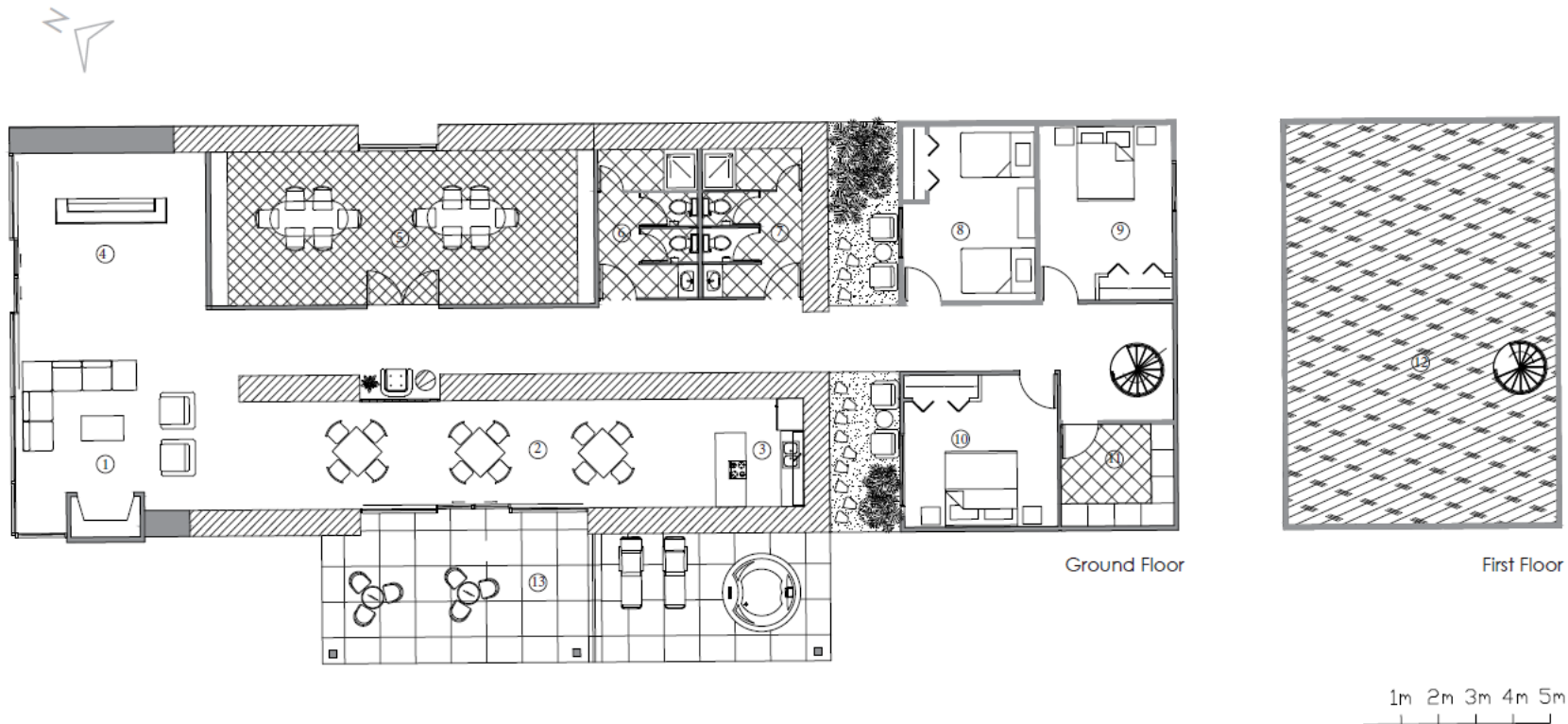


Concept

The concept for the design is Amber. Amber is a pine tree resin fossilized through the ages. This gemstone is attached to Latvian tradition as amber fragments are washed up along the Baltic Sea coast.

In folklore, the powers attributed to amber include love, strength, luck, healing and protection and relieving stress.

The essential characteristics of Amber are included in this design. The warmth, the luminosity as light goes through it, the sense of calm and relaxation, the connection with nature and the importance of Latvian traditions and history.



The main idea for the design is to maintain the original barn and expand its structure. To achieve this, the existing space will be designated for the public areas of the Guest House. The new structure will be connected to the original barn through an indoor garden and is to be used for the private spaces, such as the guest rooms and meditation area.

Legend

- | | |
|---------------------|------------------|
| 1. Living Area | 8. Bedroom 1 |
| 2. Dining Area | 9. Bedroom 2 |
| 3. Kitchen | 10. Bedroom 3 |
| 4. Reception | 11. Storage room |
| 5. Workshop | 12. Yoga room |
| 6. Men's washroom | 13. Patio |
| 7. Women's washroom | |



Front view



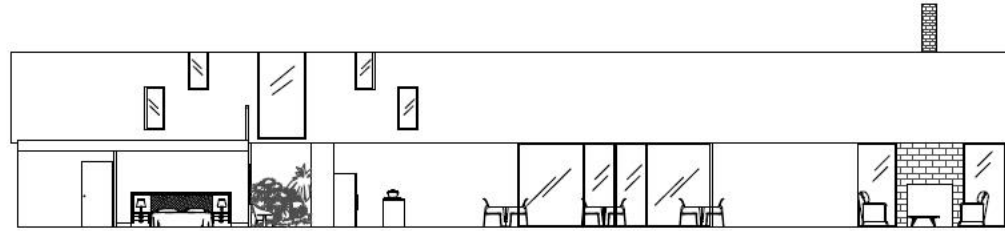
Site Plan



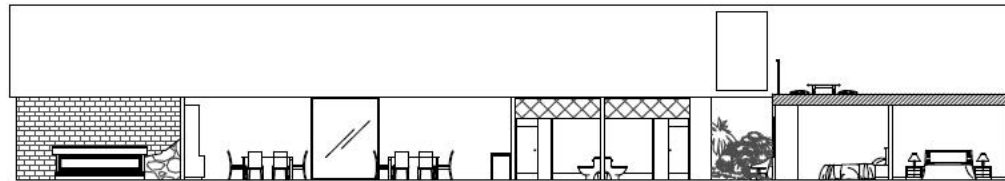
Existing structure
New structure



Isometric



Elevation A



Elevation B



Kitchen



Bathroom



Reception



Side view

All the social areas are open in order to promote conversation in the guesthouse.
Large windows will surround all the main areas to maintain a connection with nature.
For the colours and materials, soft natural materials and textures were chosen. The original finishes of the barn are to be kept to give a rustic feel to the place.



Living Room



Bedroom Type A

The style of the rooms will match the style of the rest of the Guesthouse; natural calming colors and organic materials.

The general lighting in the bedrooms will be given by the cove lights in the ceiling. Wall mounted sconce lights on each side of the bed will provide additional illumination for reading.

The room will have a private patio connected by sliding glass doors where guests can relax before bed time.



Patio



Dining Area

The kitchen and dining area will be open spaces that connect to an outdoor patio. Tables in the dining room are to be square in order to keep the dining area flexible; the tables can be placed together to entertain larger groups or host special events.