

CLAUDIA MARINA DESIGNING PORTFOLIO
CLAUDIA MARINA DESIGNING PORTFOLIO



BABY

(one of my favorite things..)



BABY TECH PACKS

SILICON WASH

NECKLINE FINISHED WITH DOUBLED RIB 1X1 1,5cm WIDTH WITH 1 NEEDLE STITCHING



COVER TAPE MADE WITH MAIN FABRIC 0,8cm WIDTH

PLACKET MADE WITH MAIN FABRIC 2cm WIDTH INVISIBLE METALLIC SNAPS



CONNECTING HERE

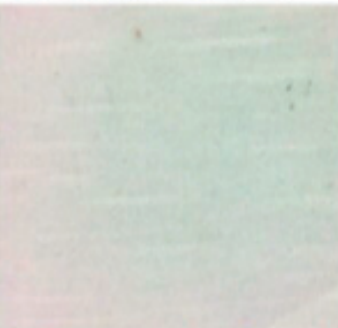
CUFFS HEM FINISHED WITH 2 NEEDLE STITCHING

THE FABRIC, THE TRIMMINGS AND THE THREAD USED IN THIS GARMENT MUST BE SUSTAINABLE. YOU MUST INDICATE AND PROVE THE SUSTAINABILITY OF EACH ELEMENT BY INDICATING THEIR CERTIFICATES.

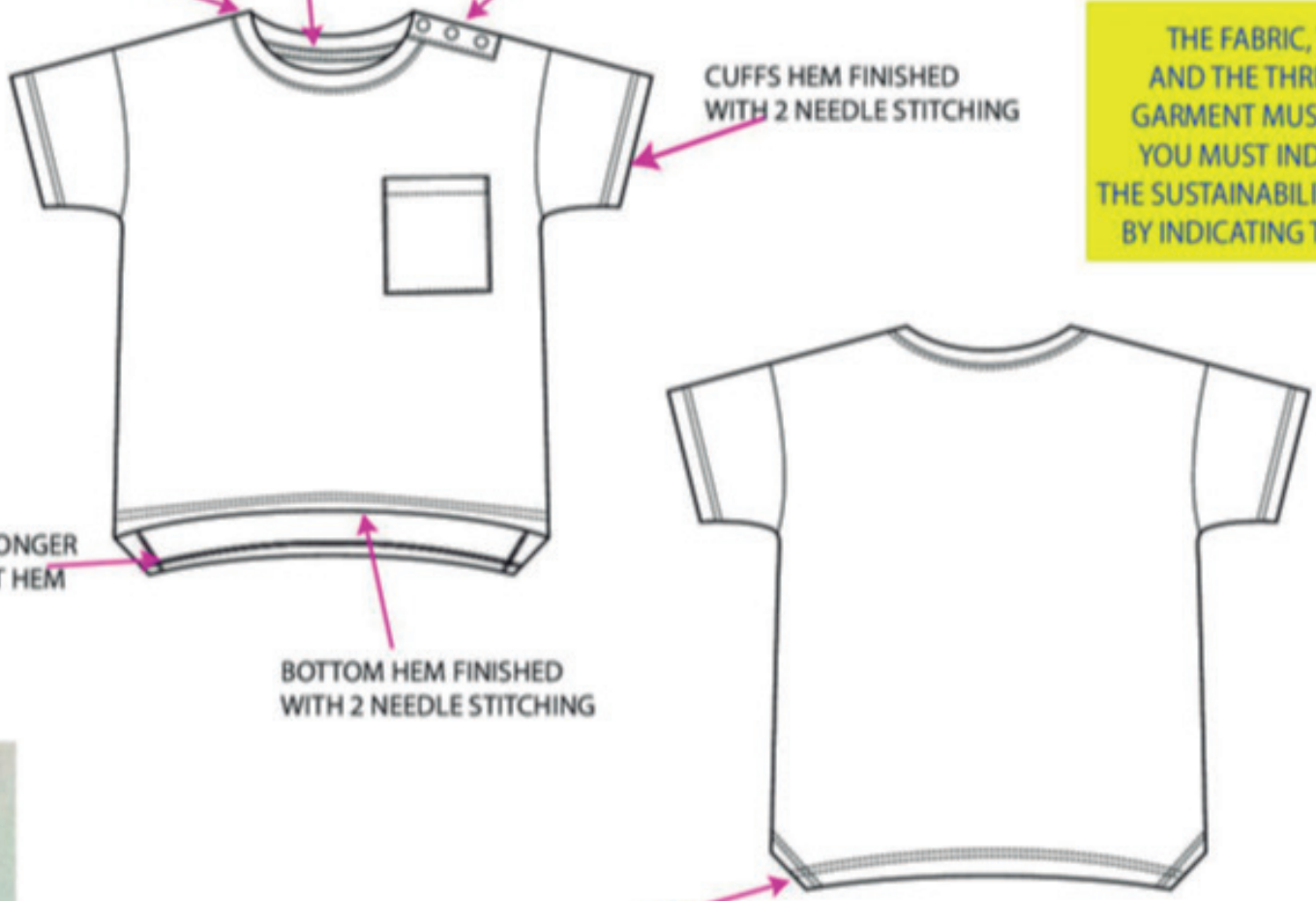
BACK HEM LONGER THAN FRONT HEM

BOTTOM HEM FINISHED WITH 2 NEEDLE STITCHING

SLUBBED SINGLE JERSEY 100%ORG CO 120GSM



BACK BOTTOM HEM FINISHED SQUARED SHAPED WITH 2 NEEDLE STITCHING



BABY TECH PACKS

SILICON WASH

THE FABRIC, THE TRIMMINGS AND THE THREAD USED IN THIS GARMENT MUST BE SUSTAINABLE. YOU MUST INDICATE AND PROVE THE SUSTAINABILITY OF EACH ELEMENT BY INDICATING THEIR CERTIFICATES.

NECKLINE IN MAIN FABRIC
1,5cm WIDTH WITH 1 NEEDLE STITCHING
IN MATCHING COLOR

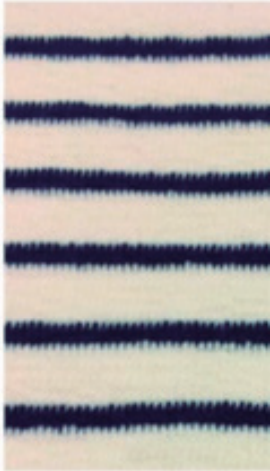
COVER TAPE MADE WITH
SINGLE JERSEY 0,8cm WIDTH

ARMHOLE SEAM WITH 1 NEEDLE
STITCHING. GATHERING AS PER PICTURE

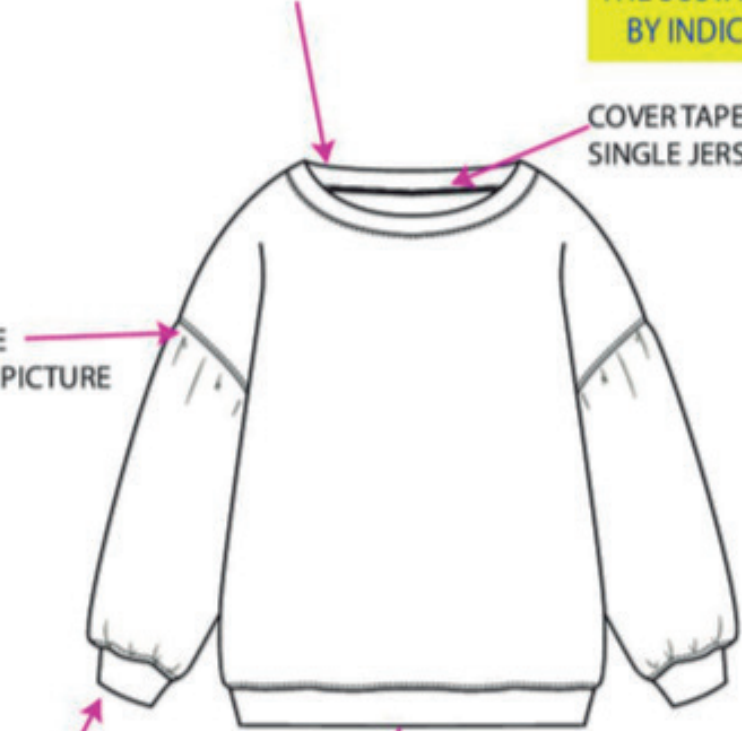


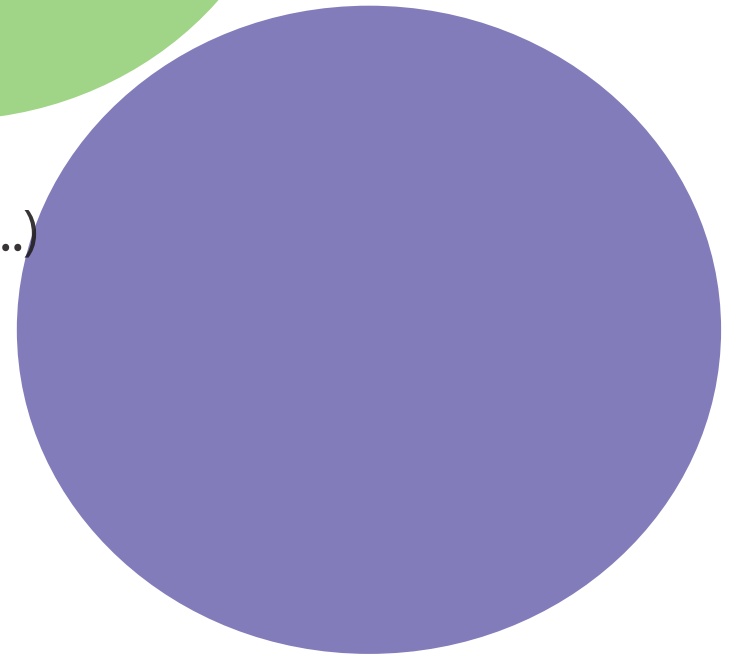
CUFFS IN MAIN FABRIC WITH
1 NEEDLE STITCHING
IN MATCHING COLOR

HEM FINISHED IN MAIN FABRIC
WITH 1 NEEDLE STITCHING
IN MATCHING COLOR



100% COT 220GSM

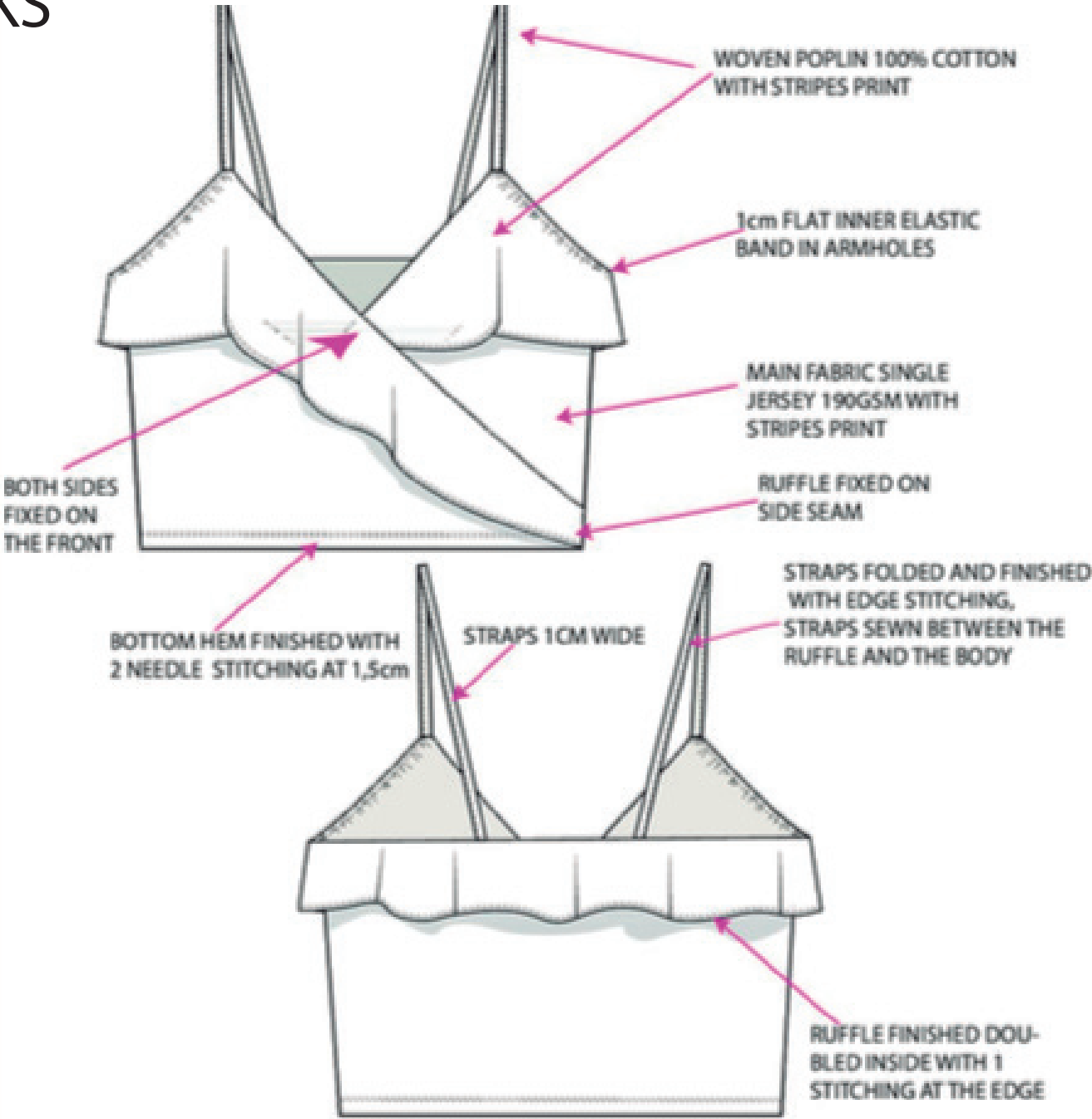




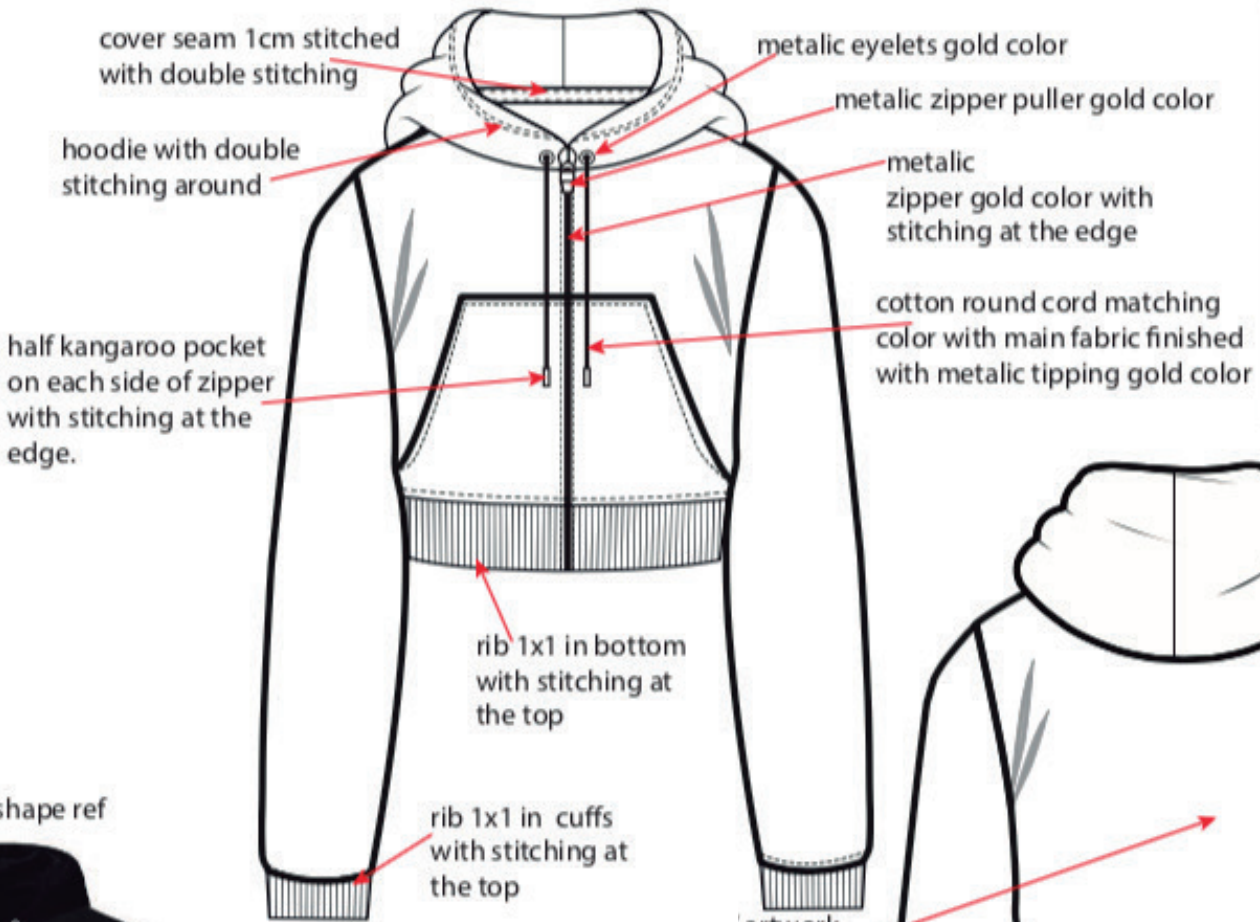
GIRL TECH PACKS



GIRL TECH PACKS



GIRL TECH PACKS



- FABRIC OPTIONS**
- OP 1: 036-IKON KADIFE
92%MODAL 8%LYC
250GSM
 - OP 2: 019-2557
39%MODAL 39%CO
17%POLY 5%LYC
300GSM
 - OP 3: 037-KADIFE
95%PES 5%EA
250GSM

