

CASUAL FRIDAY

Whether you are in a corporate or creative setting, one faux pas covers all careers: Appearing disheveled and wearing clothing that is visibly low-quality is a definite no-go. And it's no surprise that the look on Casual Friday appears like a potluck, exhausted-looking bricolage of items pulled from the closet at the last minute: Studies have shown that women put the most effort in on their work look on Monday, and that it is all downhill from there. Don't be one of those women: The key to mastering Casual Friday is about being decisive. "Don't look like you just rolled out of bed or did the walk of shame. If you're going to wear a pair of jeans or a casual shoe, they shouldn't look dingy. The

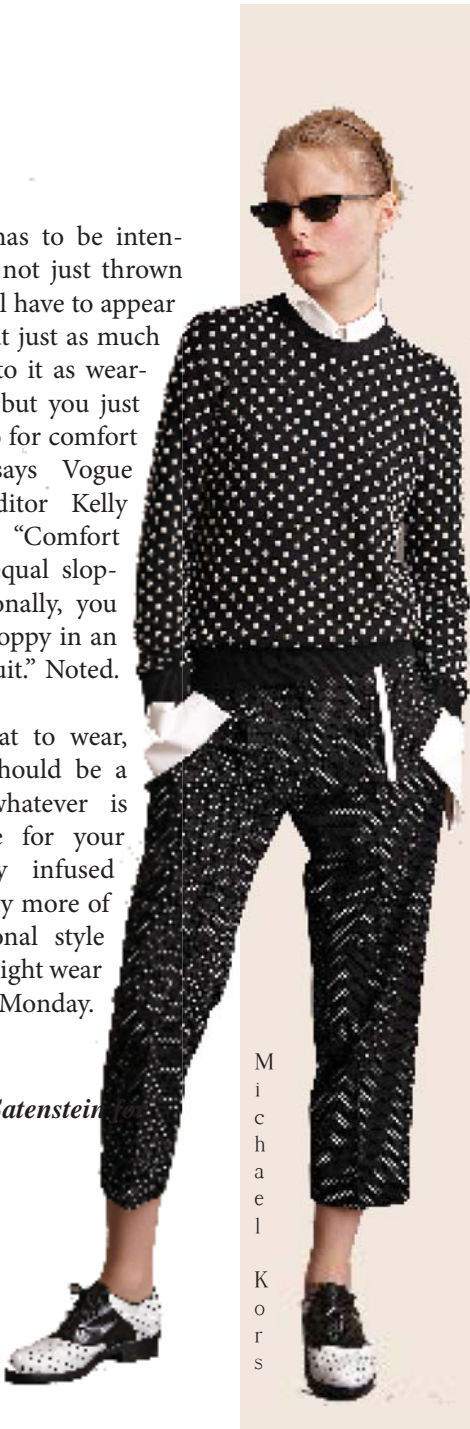
ensemble has to be intentional and not just thrown on. You still have to appear like you put just as much thought into it as wearing a suit, but you just chose to go for comfort instead," says Vogue Market Editor Kelly Connor. "Comfort does not equal sloppy. Additionally, you can look sloppy in an ill-fitting suit." Noted.

As for what to wear, the look should be a balance: whatever is appropriate for your office only infused with slightly more of your personal style than you might wear on, say, a Monday.

By Liana Satenstein
Vogue



J. Crew



Michael Kors



Banana Republic

WOMEN'S OFFICE WEAR

FALL/WINTER 2015



Clothes may make the man. Can they undo the woman? When female employees show up at headquarters in very short skirts, sweatpants or sneakers, their superiors sometimes pull them aside for a quick, private chat on dressing for success. "I want women to be paid attention to for what they say—and not how they look," explains Ms. Wil-

derotter, chief executive at Frontier Communications. As women increasingly step into visible positions at work, their female bosses are stepping in to declare a fashion emergency.

By Joann S. Lublin
for The Wall Street Journal



Joanna Lublin
Austria-llagas

TABLE OF CONTENTS

PAGE 2- #GIRLBOSS

PAGE 3- DRESS TO IMPRESS

PAGE 4 & 5- MIXING BUSINESS AND... PLEASURE

PAGE 6- "DO IT LIKE A DUDE"

PAGE 7- BABY IT'S COLD OUTSIDE

PAGE 8- CASUAL FRIDAY

#GIRLBOSS

Women are making strides in the workplace, yet selecting what to wear to meetings, business dinners or just to the office remains a challenge. Designers, fashion stylists and other experts say executive women make an array of mistakes, from dressing too casually to not paying attention to fit. Truth is, most executive women won't be making it onto any best-dressed lists anytime soon. Clothing is an overlooked component in many women's professional life, says Mary Lou Andre, head of Organization by Design. In a world where first impressions count for everything and people are sizing you up and sizing you down, appearance and clothing are so important.

By Leah Bourne for Forbes



“A girl boss is someone who is in charge of her own life. She gets what she wants because she works for it.”
-Sophia Amoruso”



Tory Burch Winter 2015-16 Ready-to-wear



Tory Burch Winter 2015-16 Ready-to-wear

BABY IT'S COLD OUTSIDE

Winter coats are the sartorial backbone of our seasonal wardrobe, so it's absolutely essential that we find the perfect one. From furry lined parkas to tailored overcoats it's all about finding the right coat to suit your lifestyle.

If you are looking for something practical to keep out the winter chill (and the guaranteed English drizzle), a military style parka is probably the best way to beat back the changeable weather whilst maintaining a utilitarian stylish edge. Luxe features such as faux-fur trimmed cuffs and hoods, and finishes in a variety of eye-catching fabrics help elevate the humble parka from 'sensible' to sensational.

The same can be said for more classically tailored styles like the belted trench, the double-breasted jacket, or the peacoat. These timeless shapes receive seasonal attention from the high street, with many shops offering playful alternatives in a range of fabrics and colours. Anything in a silk or wool mix will be a great investment piece as

not only will these fabrics keep you toasty warm, but natural materials tend to last for ages if you give them due time and attention. Happy days!

So whether you are choosing a winter coat to compliment an office wardrobe, or simply searching for the perfect status piece to revamp your existing cold weather threads. Remember, investment is often key to finding an instant signature style, and don't be frightened to embrace colour. Whatever your shape, budget or style, team LOOK have got your winter coat needs sorted.

By Lauren O'Callaghan for Look UK



Adam Lippes



Heritage



Jason Wu

“DO IT LIKE A DUDE”

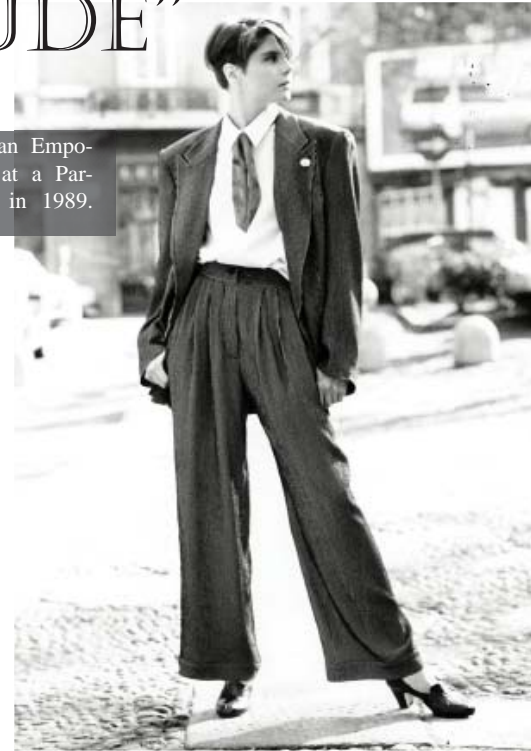
G A
i r
o m
r a
g n
i i
o

Remember power suits? At the same time women were entering the corporate workplace in large numbers, the power suit began to pop up. It was usually a long jacket with the kind of big, padded shoulders Joan Crawford made famous, a straight skirt and, often, a floppy silk bow tie that

Little Lord Fauntleroy would have been at home in. The 1980s power suit was designed to ignore a woman's shape so it didn't hinder her mobility as she worked her way up the corporate ladder.

Karen Grigsby Bates for NPR

A model wears an Emporio Armani suit at a Paris fashion show in 1989.



“The 1980s power suit was designed to ignore a woman's shape so it didn't hinder her mobility as she worked her way up the corporate ladder”

-Karen Grigsby Bates for NPR

the runways, it was even more captivating when we noticed all the new professional wear that was pre-

sented, both in the form of pant and skirt suits. Now, we have a whole slew of looks to choose from, as well as huge Italian names, including Prada, Jil Sander, Missoni, Bottega Veneta, Gucci, and Fay. While some of the designers preferred to gender bend, another huge trend for the season, others opted for the more feminine interpretations, while some of the suits even appeared with culottes.

Tamar Najarian for Fashionisers



B a
n a
n a
R e
p u
b l
i c

R a
c h
e l
Z o
e

DRESS TO IMPRESS

If, however, every single week, for 3 out of 5 times you find yourself running late, burred in clothes that to a mere mortal would make killer outfits, but to you they're all crap that bring out the fashion monster inside you, leaving you looking stupid in your underwear staring at piles, and I mean PILES of clothes thinking "Great! I've got nothing to wear", then I've got 2 things to tell you.(1) This post is for you, and (2) You're husband/BF/roommate (with no fashion penchant) probably thinks you're crazy.

By Dana Cristina Straut for FashionTag

GLAMOROUS at the office is a look for all those sexy women who rule the world, and would rather do it in bright lips, sky high heels and outfits that can go from 9 am to late dinner cocktails. The TIP is always in the posh fabulous heels. Expensive perfumes, rich fabrics, pencil skirts and silky blouses, long trousers, statement golden necklaces, brand watches and massive bags or clutches. These ladies are not afraid to flaunt it all.



Christian Louboutin

SIMPLE & FEMININE is an easy peasy look if you're the kinda gal who loves flowy flirty dresses, tiny jewelry and looking casual smart all the time. If you think chiffon and flirty is not for office think again. The TIP: it's all about the hem. Wear knee-length or over-the-knee dresses or skirts in any color or print, cinged at the waist, paired with smart blazers. Shoes wise, heels look better but you can also don ballet flats.

By Dana Cristina Straut for Fashion Tag



J a
s o
n
W u



J a
s o
n
W u

MIXING BUSINESS AND

Donna Paulsen, from the TV show *Suits*, once said, "I don't mix business and pleasure." Really, Donna? Then you've clearly never experienced the pleasure of wearing patterns in the office.
By Manni Wang



QUICK PATTERN PROFILES *By Manni Wang*



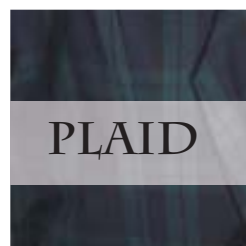
STRIPES

This pattern is a classic. From thin (pinstripe) to wide, it mixes well with all other solid colors. The smaller the stripe, the subtler the effect.

Floral prints are everywhere and there's no reason to stop from sneaking some into the office as well. However, it's important to pair it well.



FLORAL



PLAID

Many different kinds of plaid exist. From shadow to tartan plaid, it is a busier pattern because of the mix of color and the pattern itself. Combining it with business is tricky, but still can be done beautifully.

Heather is a much rarer pattern to find, but it doesn't mean this smaller print doesn't deserve a place in our wardrobes. In fact, heather is especially appropriate for the office because it is not as loud as floral or plaid.

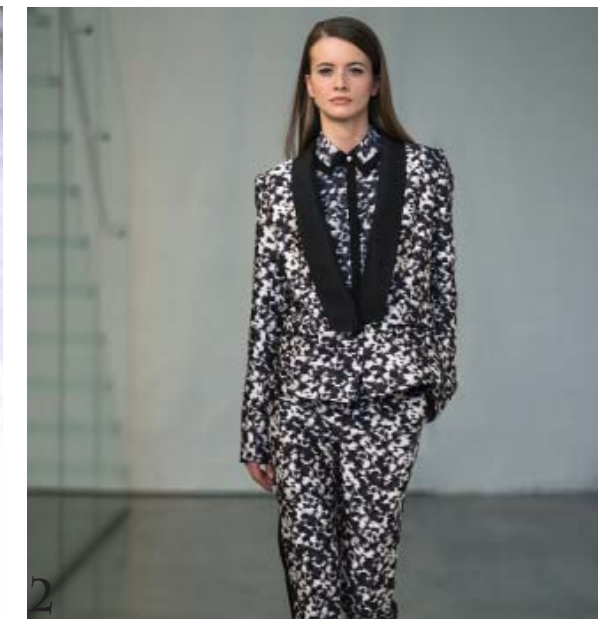


HEATHER

...PLEASURE



1



Look 1- Topshop Unique Winter/Fall 2015 **Look 2-** Rachel Zoe Winter/Fall 2015 **Look 3-** Banana Republic Winter/Fall 2015 **Look 4-** Banana Republic Winter/Fall 2015 **Look 5-** Rebecca Taylor Winter/Fall 2015 **Look 6-** Suzanne Rae Winter/ Fall 2015



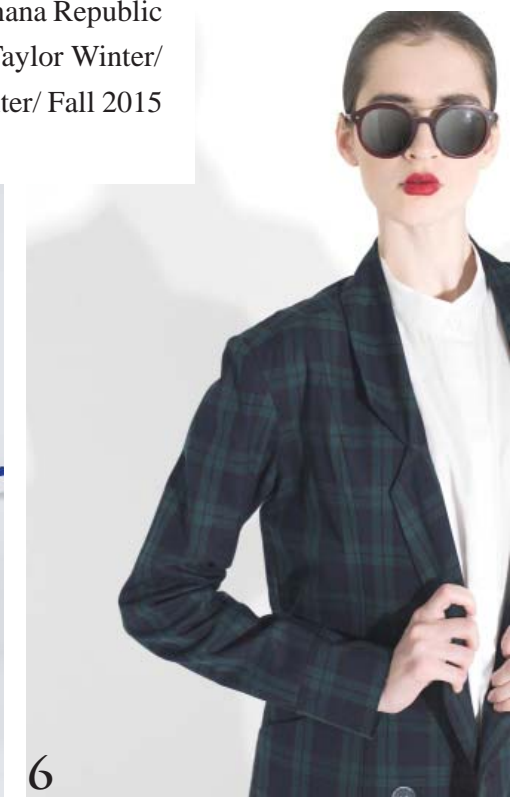
3



4



5



6