



SNAKE LEATHER
SNAKE LEATHER

FENDI X DOLCE & GABBANA



Design Development S/S 20: Cut & Sew

By Anne Ross / 10.2518

[View More](#)

Design Development



Lara Mijch



Nancy Mijch



Jill St. John



Cut & Sew S/S 20

Twisted Second-Skin

Why is it key? The second-skin is revisited, inspired by the S/S 20 story *Re-Form*. Twisted, draped proportions meet a semi-sheer gauze, perfect for layering.

Fabric & detail: Sheer Lycra.

Market: Women & Young Women

Drop: Spring

Design Development S/S 20: China Apparel

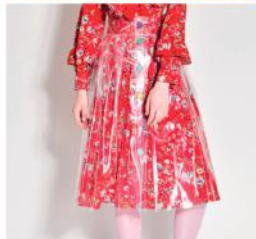
By Jennifer Zhang / 10.10.18

[View More](#)

Design Development



Christina Simola



Kerry Huang Group



Marcello Simola



China Apparel S/S 20

Textured Midi-Skirt

Why is it key? Midi-skirts are on the rise within China's womenswear market. PVC provides a fashion-led update that can easily be styled across a wide range of looks.

Fabric & detail: lightweight PVC with more give

Market: Women & Young Women

Drop: Spring

Design Development S/S 20: Trousers, Shorts & Jumpsuits

By Anne Ross / 10.03.18

[View More](#)

Design Development



Brittany Spradley



Hollie Evans



Brittany Spradley



Trousers, Shorts & jumpsuits S/S 20

Slim, Tailored Short

Why is it key? The popularity of slimline to cycle-style shorts works its way into the tailoring category, seen in slim to straight silhouettes, falling just above the knee.

Fabric & detail: opt for cotton or cotton elastane for a streamlined finish.

Market: Women, Young Women

Drop: Spring