

The background of the image is a light cream color, overlaid with a pattern of stylized, hand-drawn green leaves and stems. The leaves are elongated and pointed, with some showing internal vein details. The stems are thin and curved, creating a sense of organic growth. The overall style is soft and naturalistic.

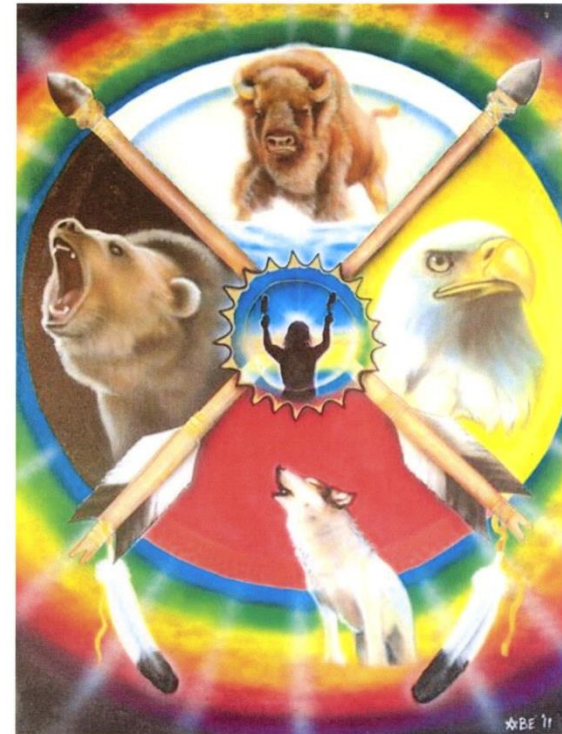
EDUCATION

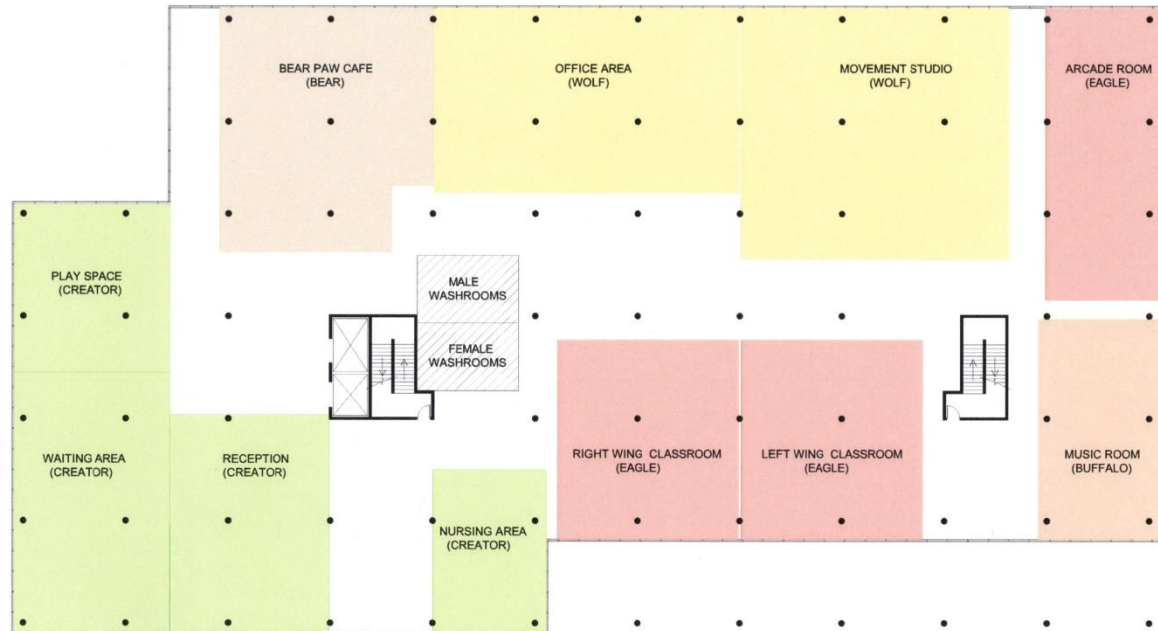
Children's Community Centre

CHILDREN'S COMMUNITY CENTRE

My design idea for this community centre is to provide a place where the people have a sense of BELONGING to allow them to have a CHANCE, in order to move them in the right DIRECTION, to provide EDUCATION and allow for positive GROWTH involving aspects of displaying and promoting Native American culture and their traditional ways. The concept I produced is based off of the traditional Native American Medicine Wheel, which has four directions, including the center representing the Creator making five spirit representations, total. The four directions indicate North, East, South and West, which include a colour, spirit animal and meaning I have connected back to the Medicine Wheel.

1. (Entry/Lobby) being the **CREATOR**: Life, Land, Spirit and the development of **GROWTH**
2. (Library) being the **BUFFALO**: Mind, Philosophy, Wisdom and **EDUCATION**
3. (Café) being the **BEAR**: Strength, Healing, and Rejuvenation to provide a **CHANCE**
4. (Classroom Areas) being the **EAGLE**: Art, Writing, and Creativity for **DIRECTION**
5. (Movement Studio/Office area) being the **WOLF**: Journey, Adventure, and Unity to give a sense of **BELONGING**





1 MAIN FLOOR BLOCK PLAN
ID19 SCALE: 1/32"=1'-0"



1 2ND FLOOR BLOCK PLAN
ID20 SCALE: 1/32"=1'-0"

#1 RECEPTION WAITING & PLAY



#1 NURSERY ROOMS



#2 BEAR PAW CAFE



#3 OFFICE



#5 MOVEMENT STUDIO

UNFURNISHED

#6 ARCADE ROOM



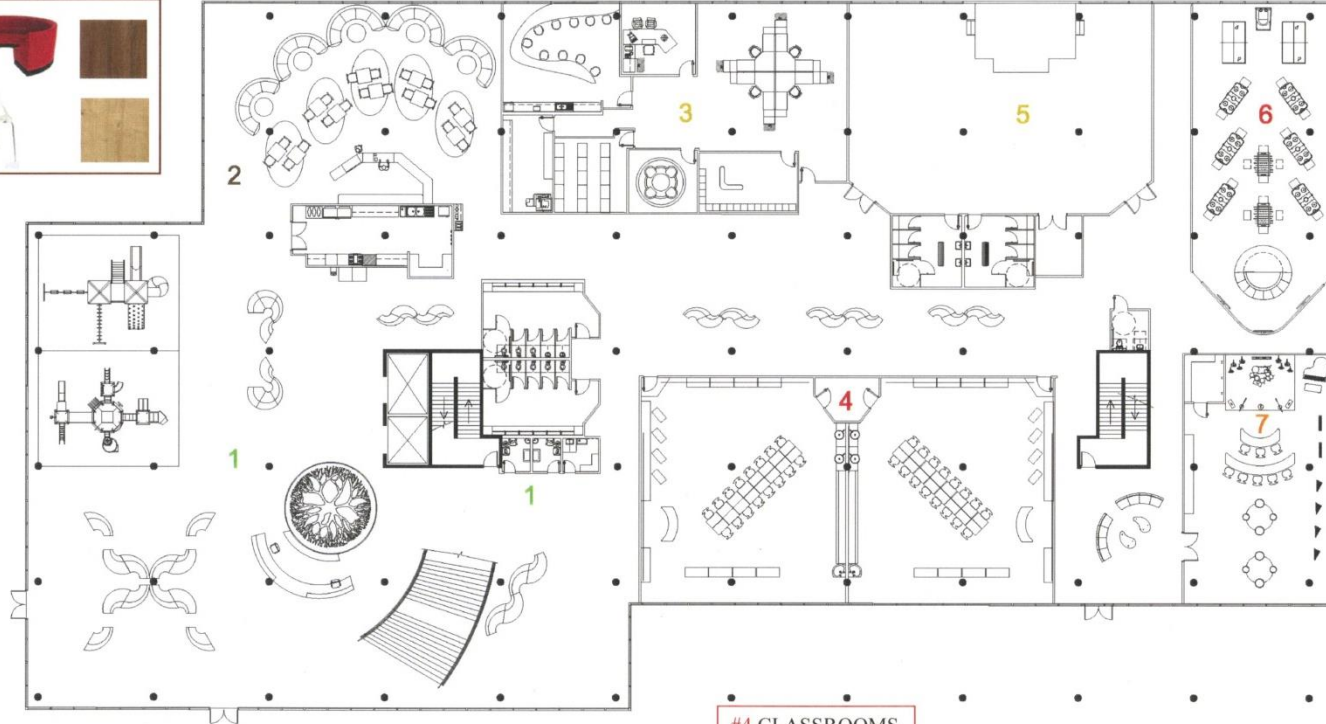
#7 MUSIC ROOM



#4 CLASSROOMS



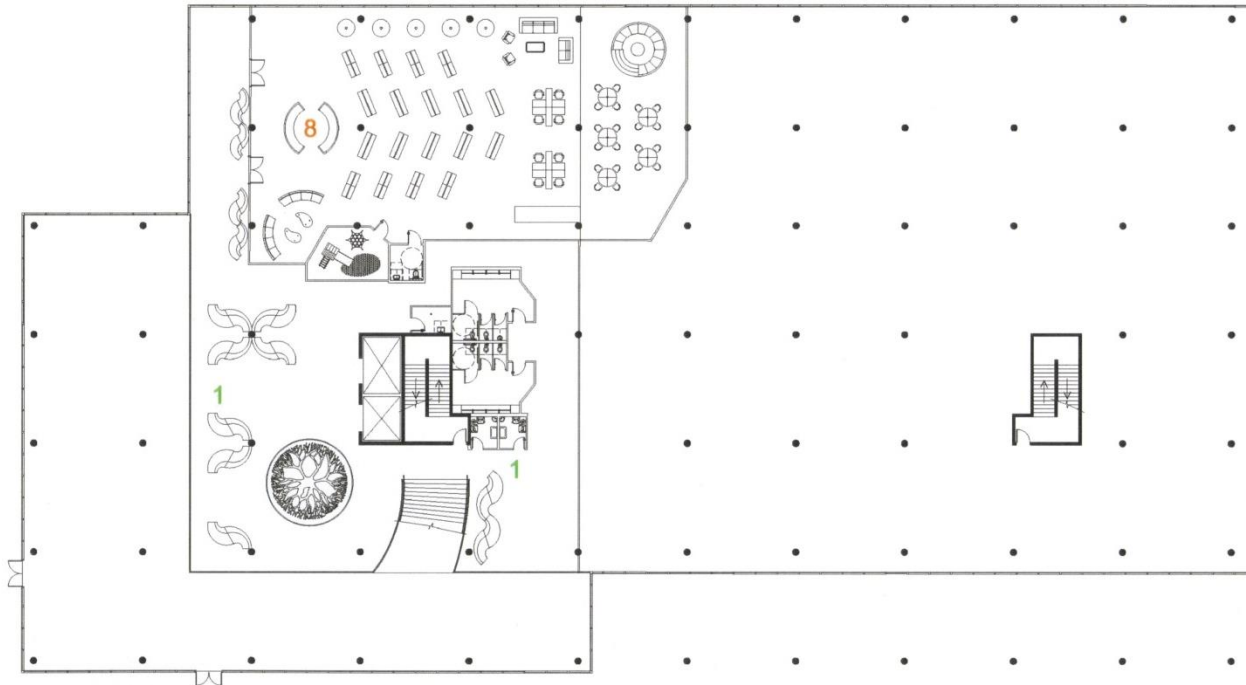
1 MAIN FLOOR FURNITURE PLAN
SCALE: NOT TO SCALE

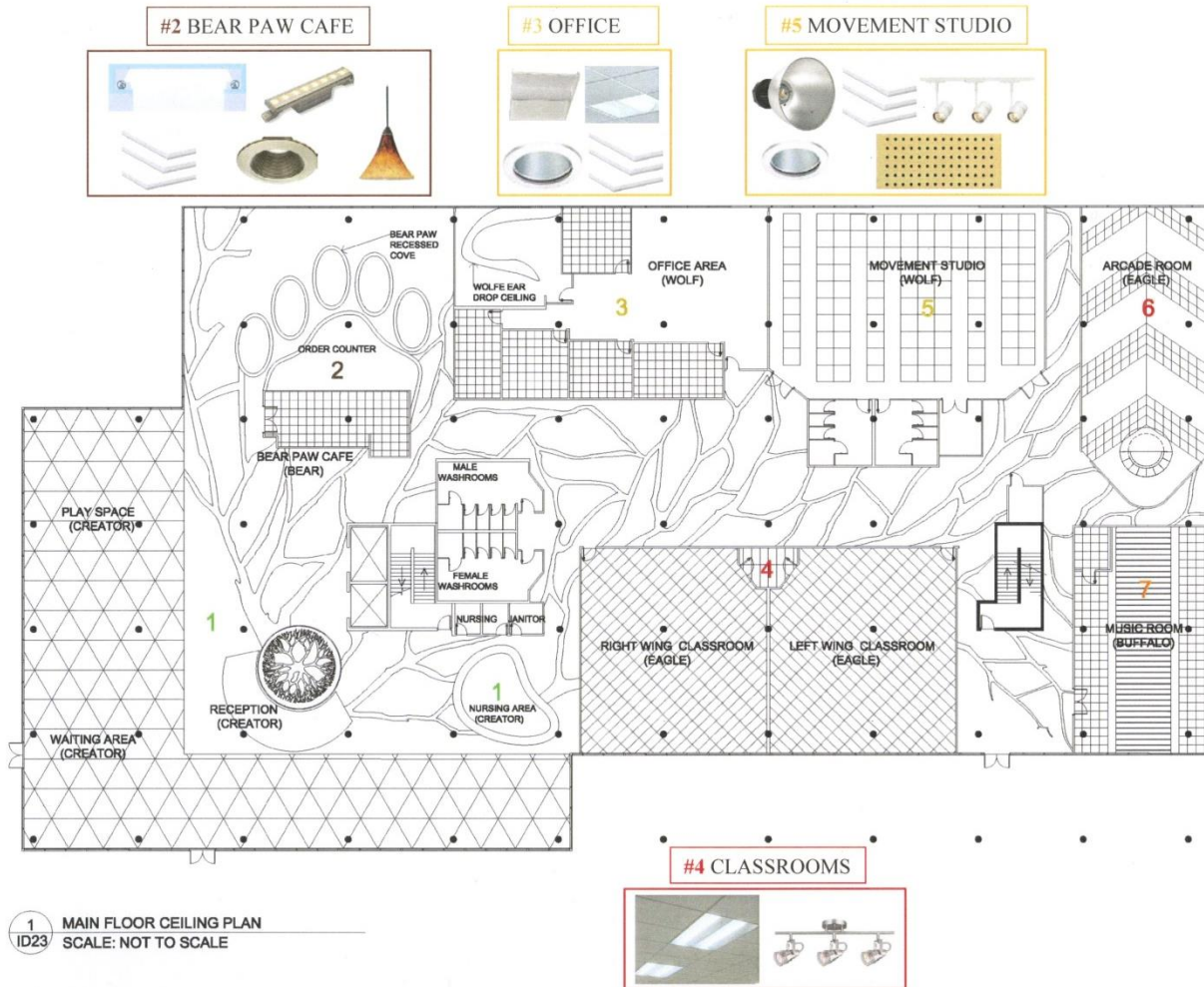
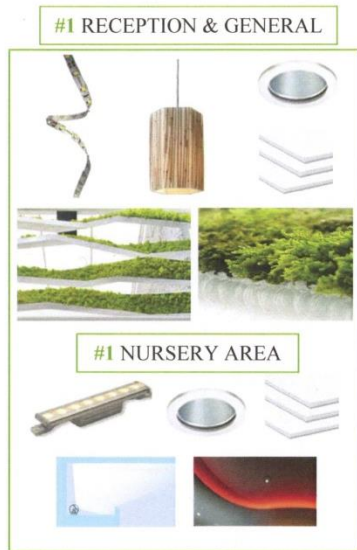


#8 LIBRARY



#1 WAITING AREA & NURSERY ROOMS

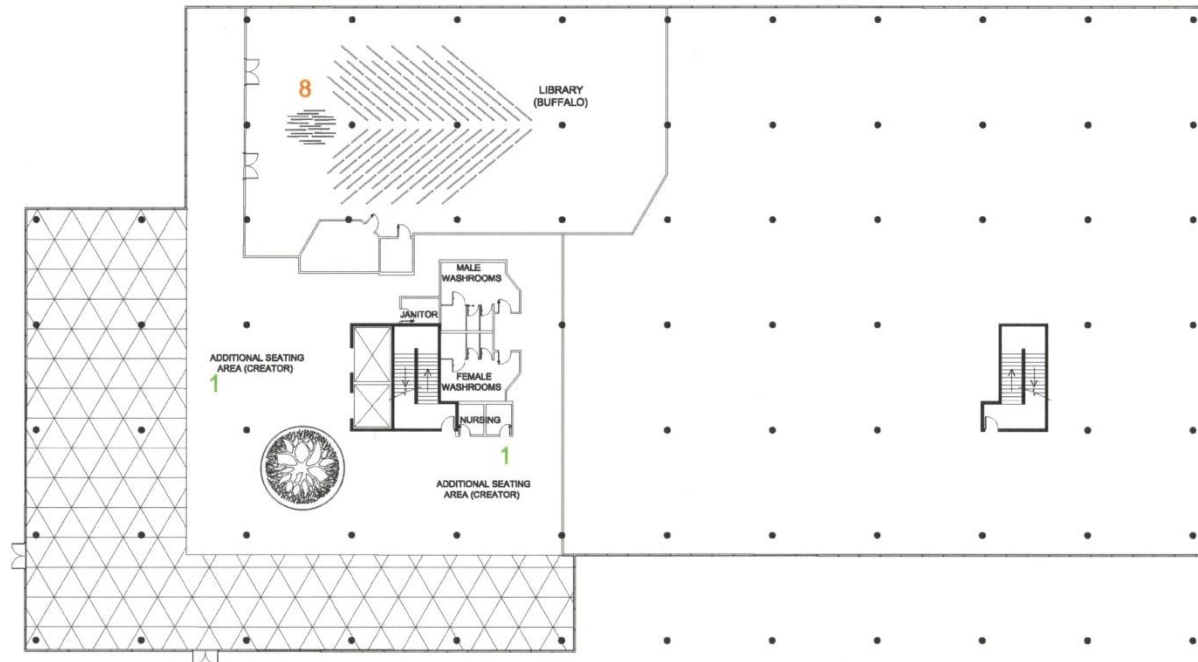




#8 LIBRARY



#1 WAITING AREA & NURSERY ROOMS



Spirit of the Creator / Mother Earth

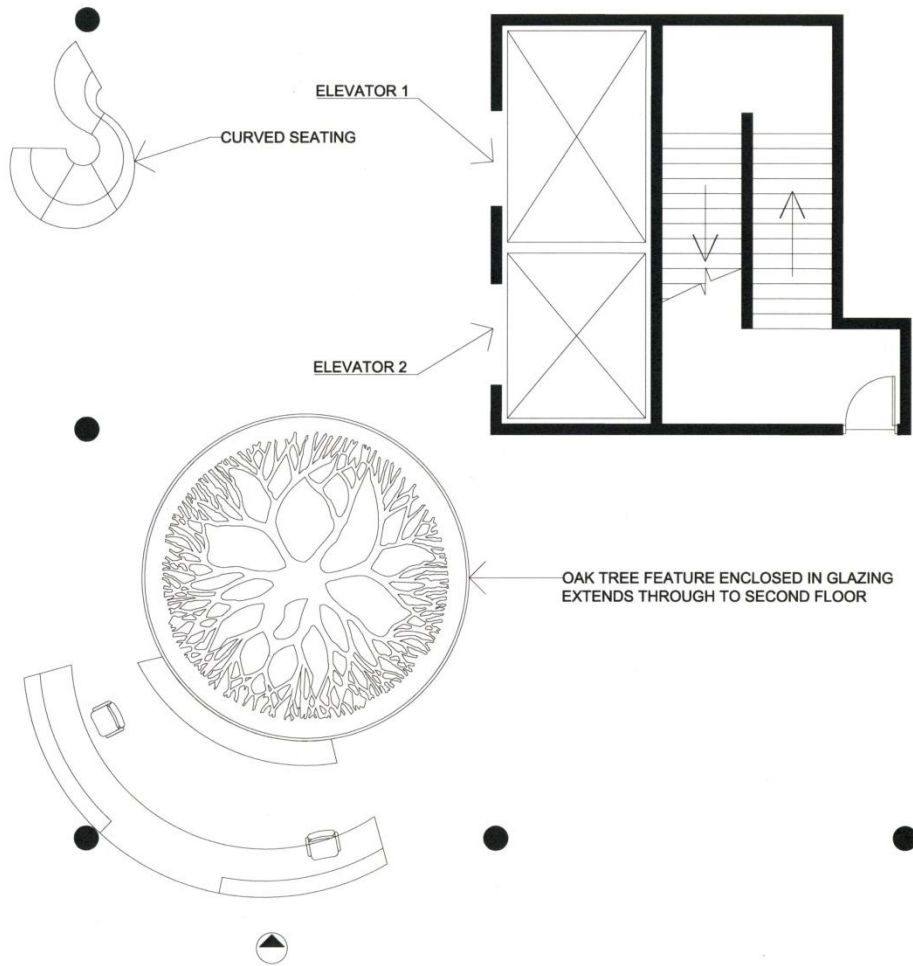


REPRESENTATION

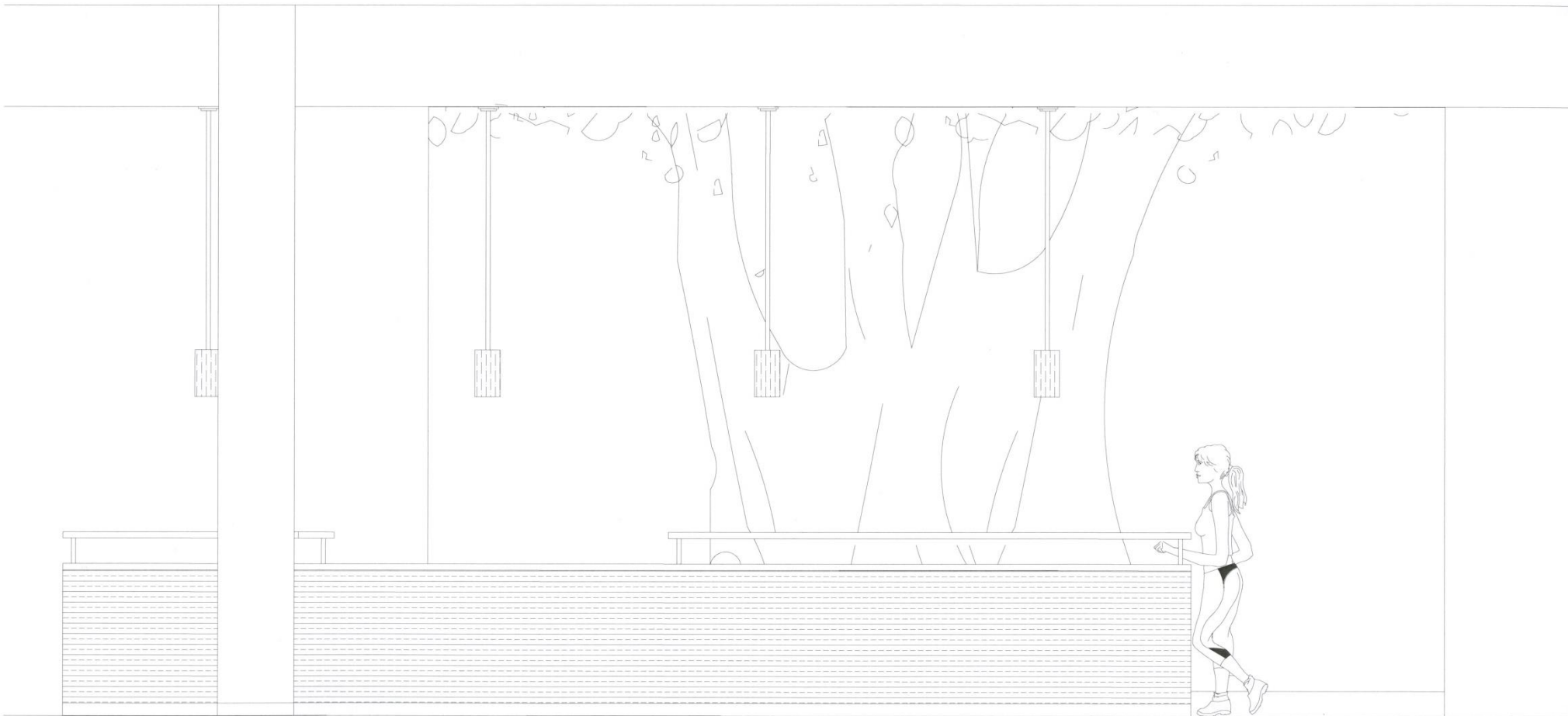
- Color green
- Life
- Land
- Spirit
- Growth



For the planning of the reception area I have the furniture working around the large tree feature that extends through to the second floor, representing the creator. This is to give the idea of the tree is leading you through the community center with its branches to take you on a journey to see and experience each space / spirit animal.



1 RECEPTION FLOOR PLAN
ID25 SCALE: 1/8"=1'-0"



1 RECEPTION DESK ELEVATION
ID26 SCALE: 1/2"=1'-0"

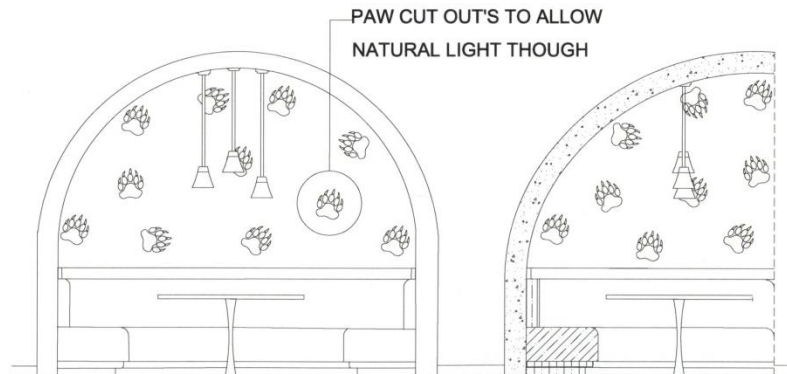
Spirit of the Bear

REPRESENTATION

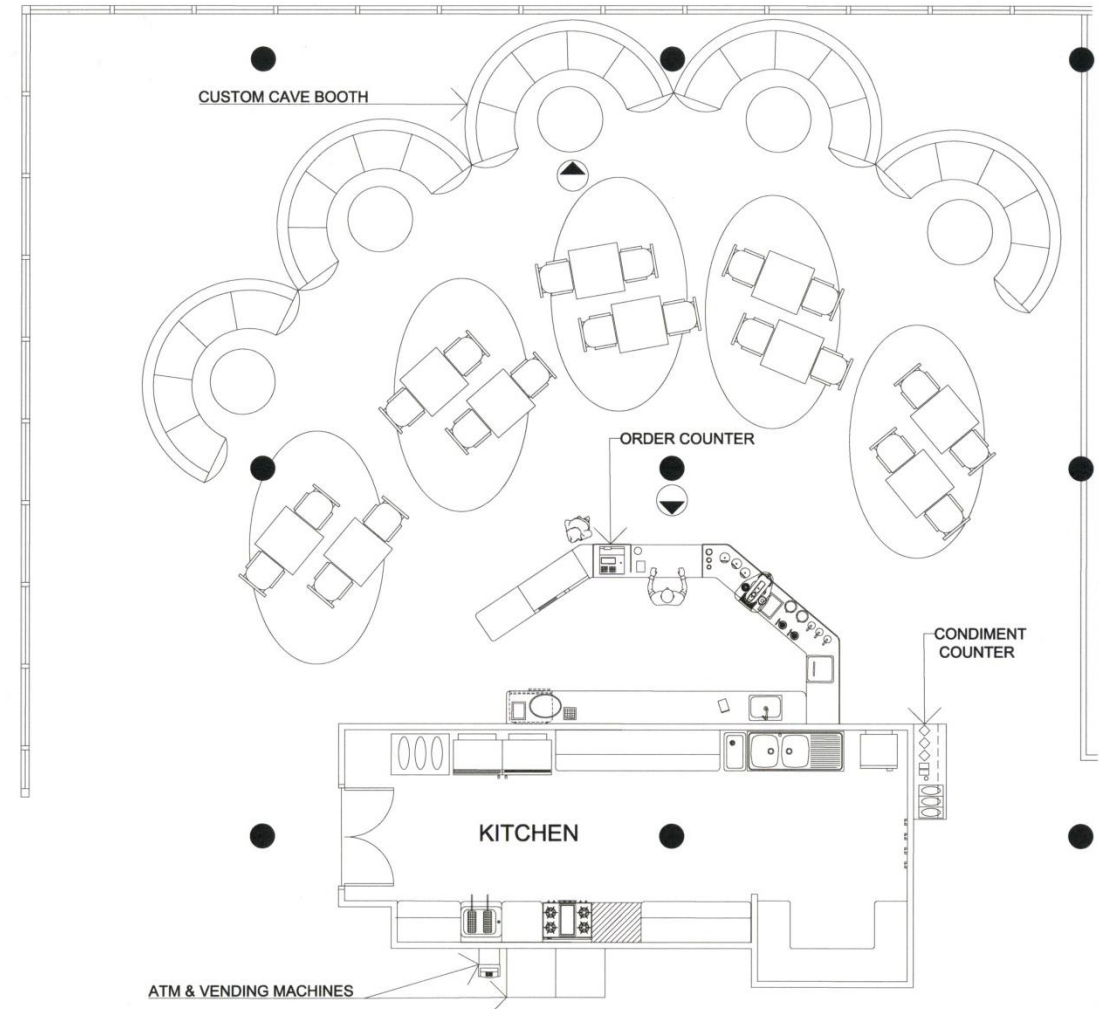
- Color black or brown
- Strength
- Healing
- Rejuvenation
- Chance



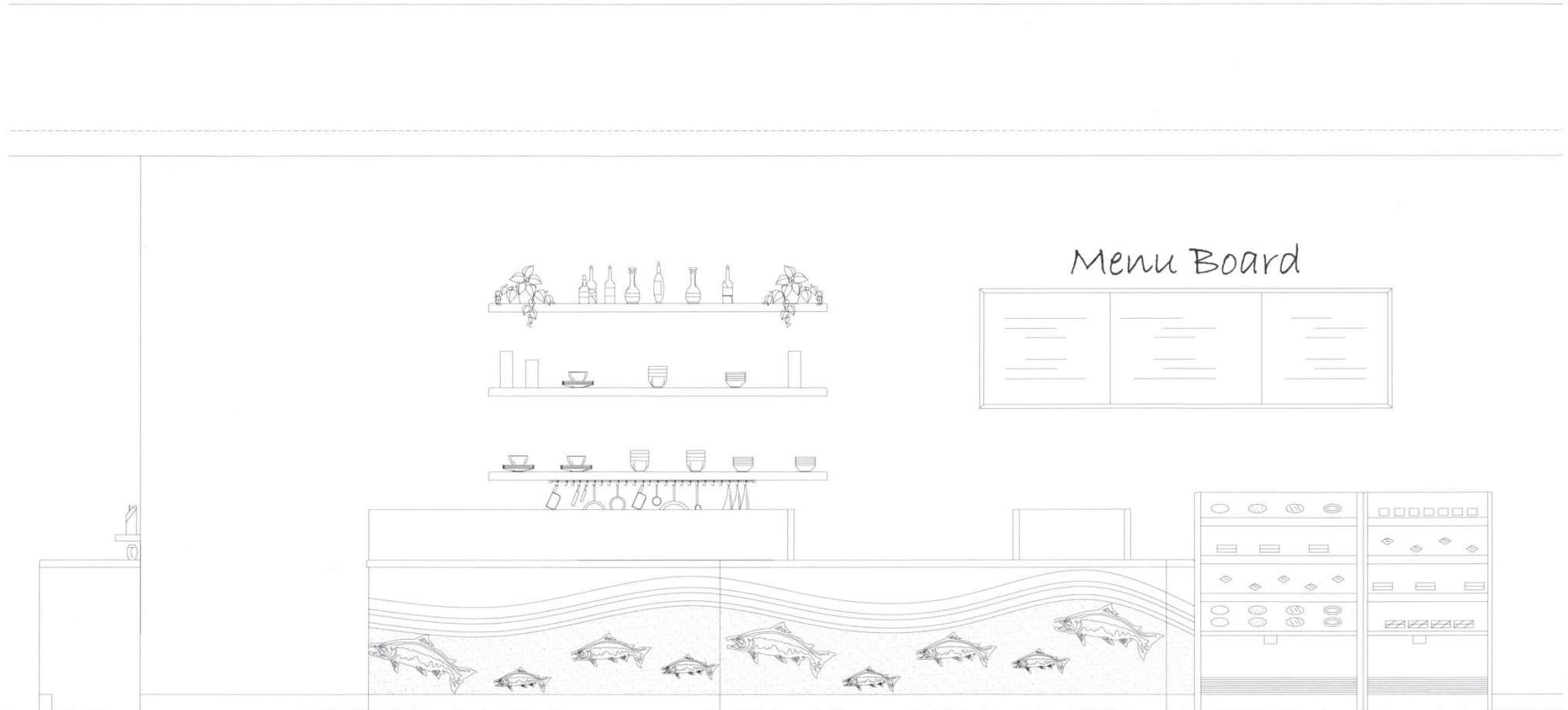
The Cafe space planing is based on the shape of the bear paw using the vision that the cafe is a place you go to "hibernate"and rejuvenate your body to continue on your journey for the day. Included I designed custom booths using the aspect of the booth seating being the bear cave.



1 ELEVATION & SECTION OF CUSTOM BUILT BOOTH CAVES
ID27 SCALE: NOT-TO-SCALE



2 CAFE FLOOR PLAN
ID27 SCALE: 1/8"=1'-0"



1 CAFE ORDER COUNTER ELEVATION
ID28 SCALE: 1/2"=1'-0"

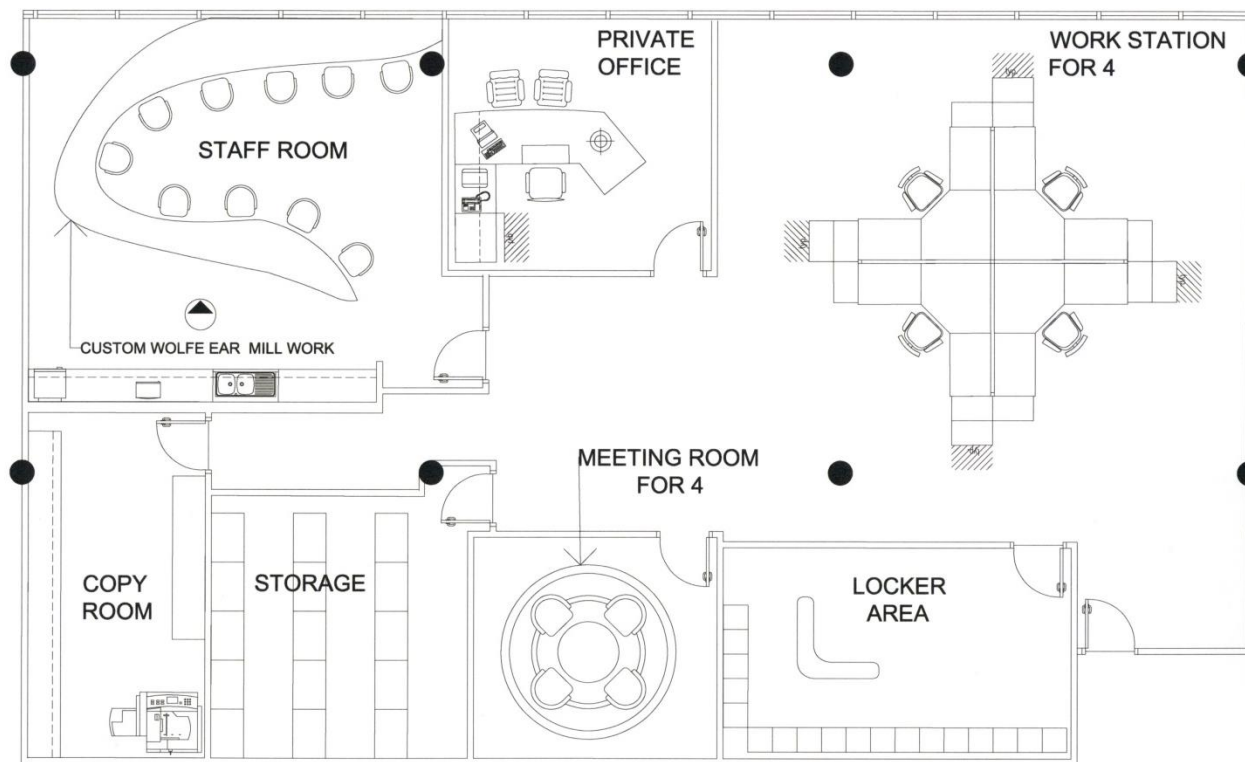
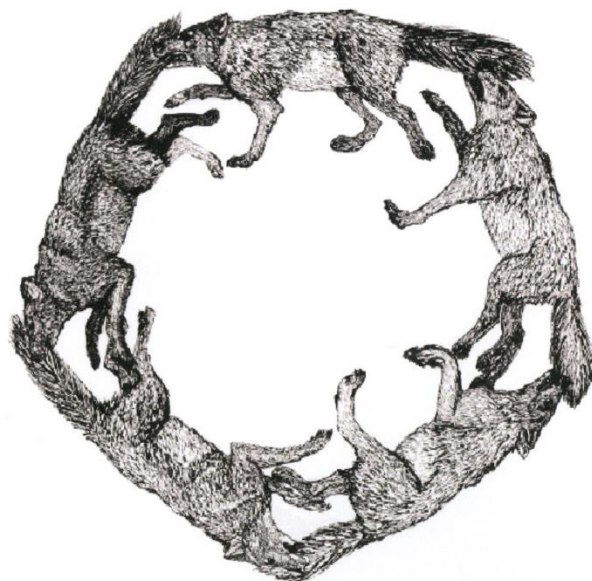
Spirit of the Wolf

REPRESENTATION

- Color yellow
- Journey
- Adventure
- Unity
- Belonging



In the office I decided to use the action of sticking together as a pack providing a collaborative work station as well as using the shape of the wolf ear to create a custom millwork / bar piece in the staff room as the idea of tuning into each other more personally on break time





1 STAFF ROOM MILLWORK ELEVATION
ID30 SCALE: 1/2"=1'-0"

Spirit of the Wolf

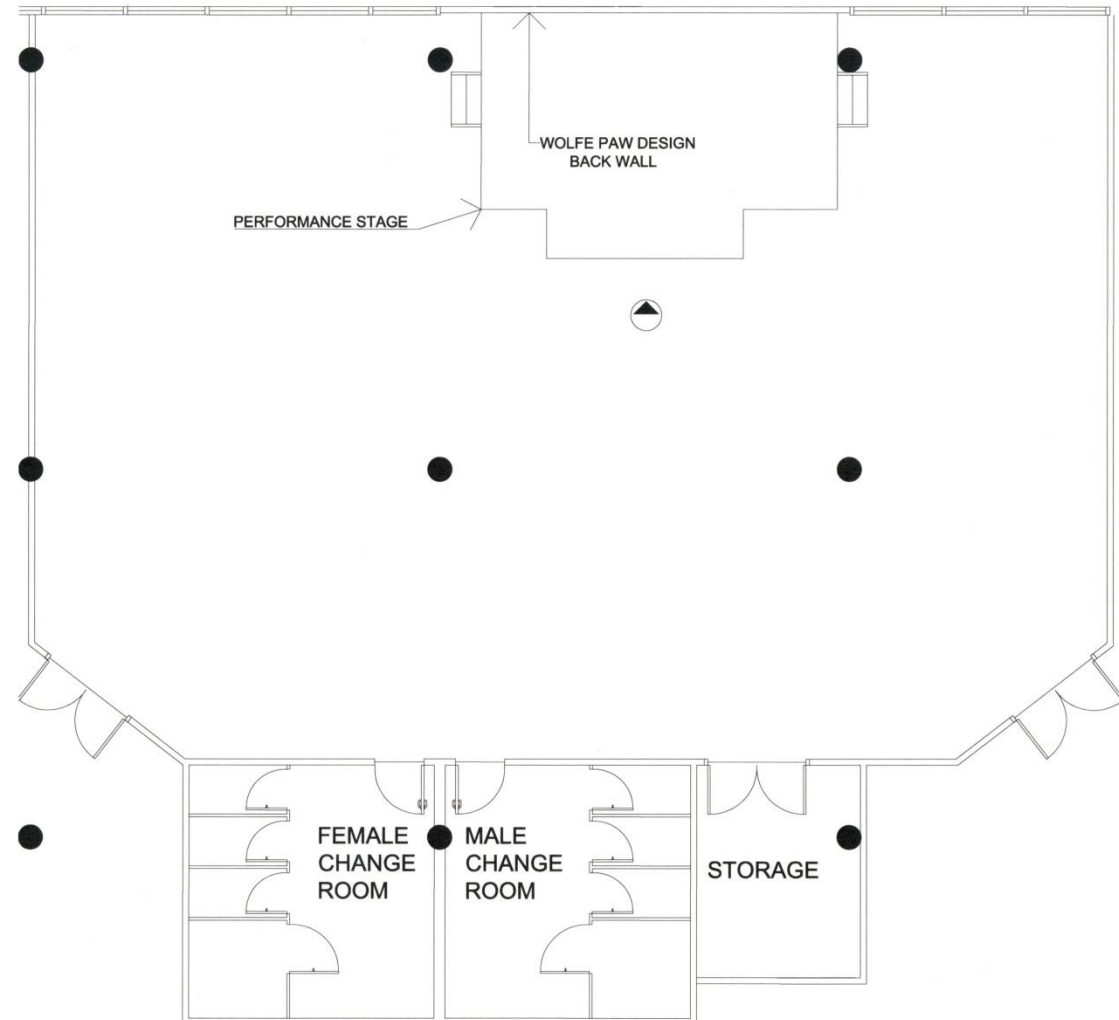


REPRESENTATION

- Color yellow
- Journey
- Adventure
- Unity
- Belonging



For the Movement studio I took the literal concept of dancing with the wolves into the design planning of this space making the stage back wall the main design feature using the wolf paw and Cree nation Directional color wheel as the overall back wall art piece.





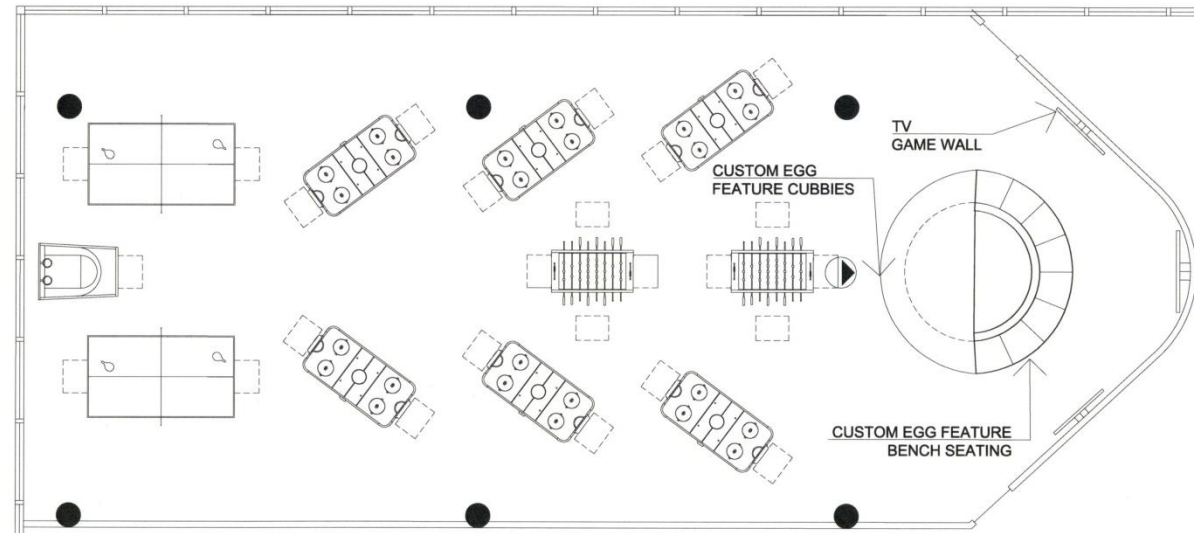
1 MOVEMENT STUDIO STAGE ELEVATION
ID32 SCALE: 1/2"=1'-0"

Spirit of the Bald Eagle

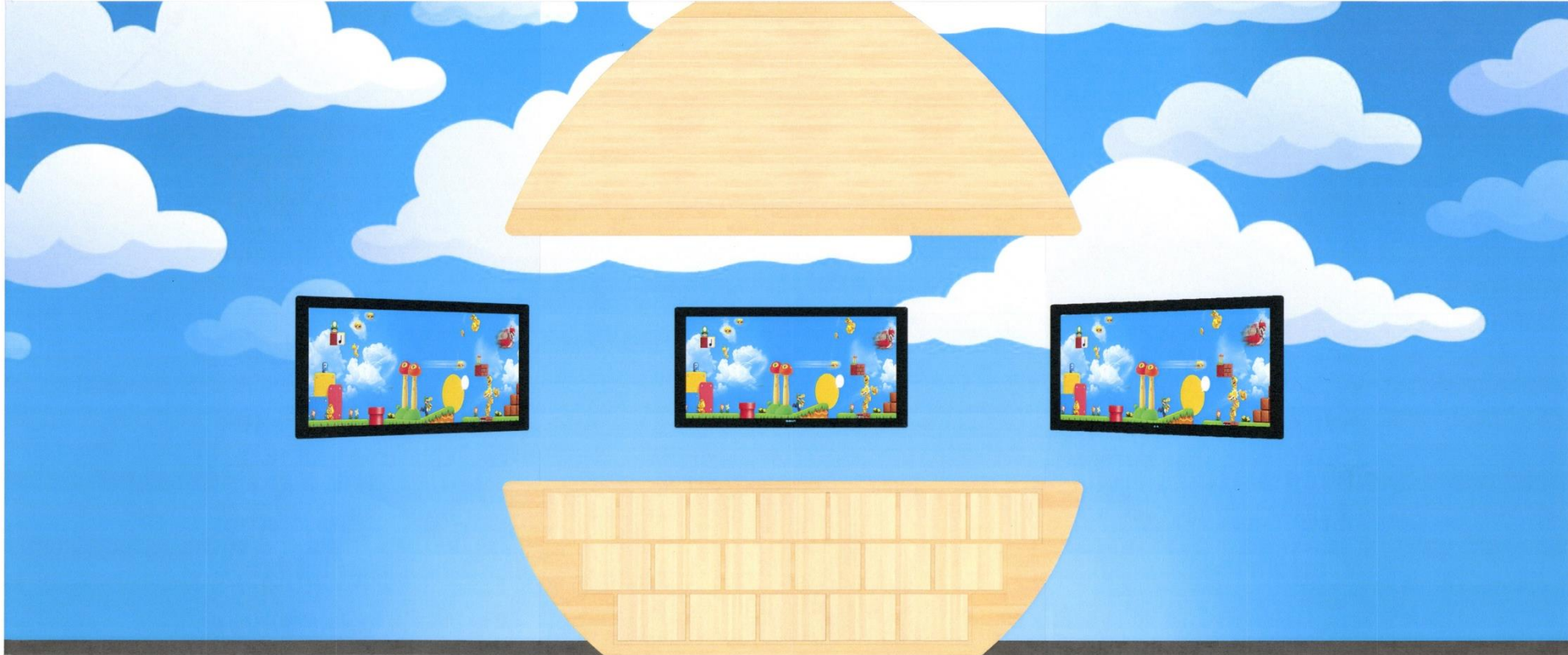
REPRESENTATION

- Color red
- Art
- Writing
- Creating
- Direction

I chose the form of the Eagle feather to be used for the space planning and furniture layout of the arcade, creating the aspect of freeing your feathers as a child to let loose and have fun. I also used the egg shape for the custom built cubbies / seating feature at the front to convey the idea of hatching out of your shell.



1 ARCADE ROOM FLOOR PLAN
ID33 SCALE: 1/8"=1'-0"



1
ID34

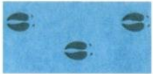
ARCADE EGG FEATURE & GAME WALL ELEVATION
SCALE: 1/2"=1'-0"

Spirit of the Buffalo

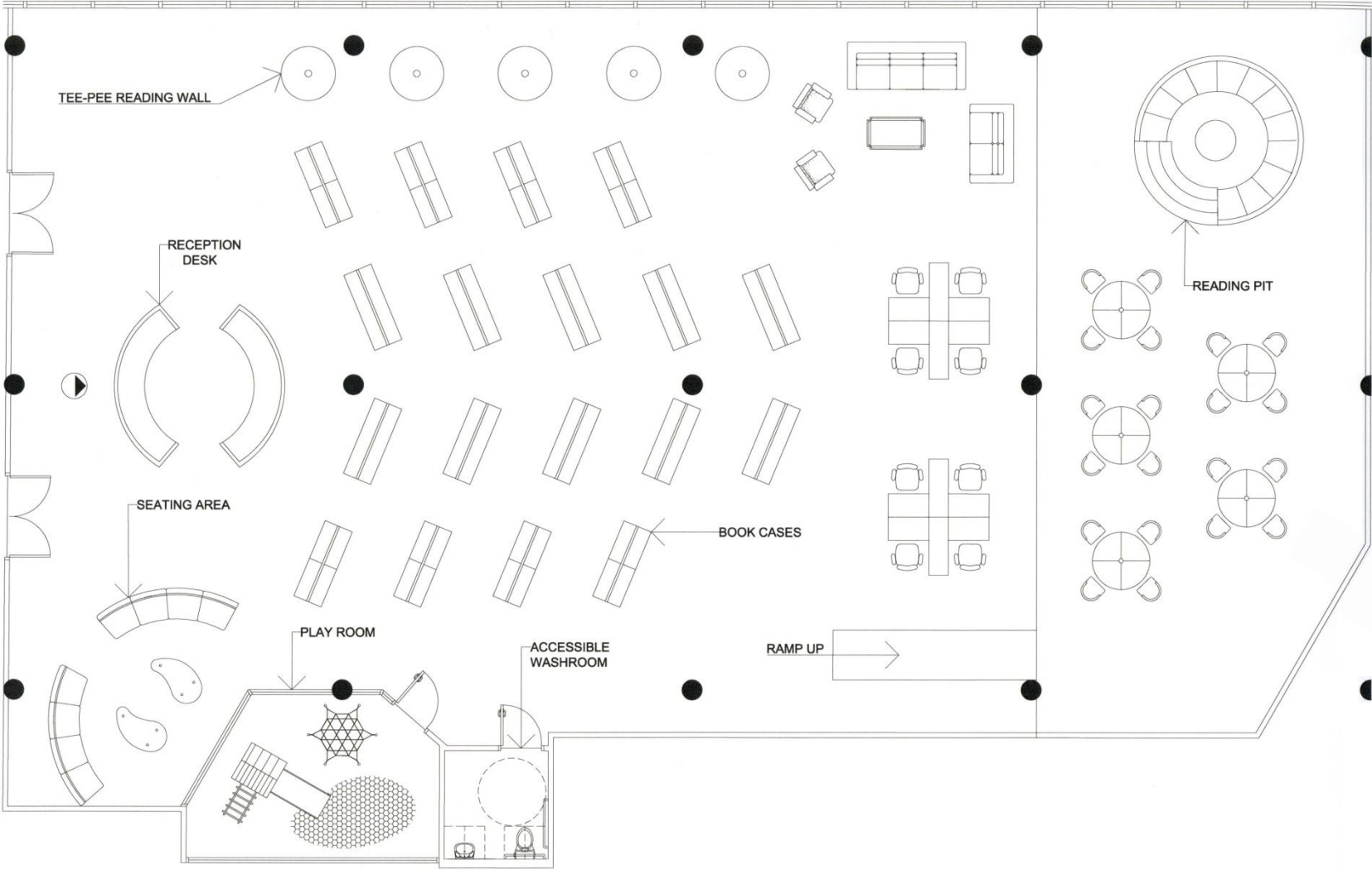


REPRESENTATION

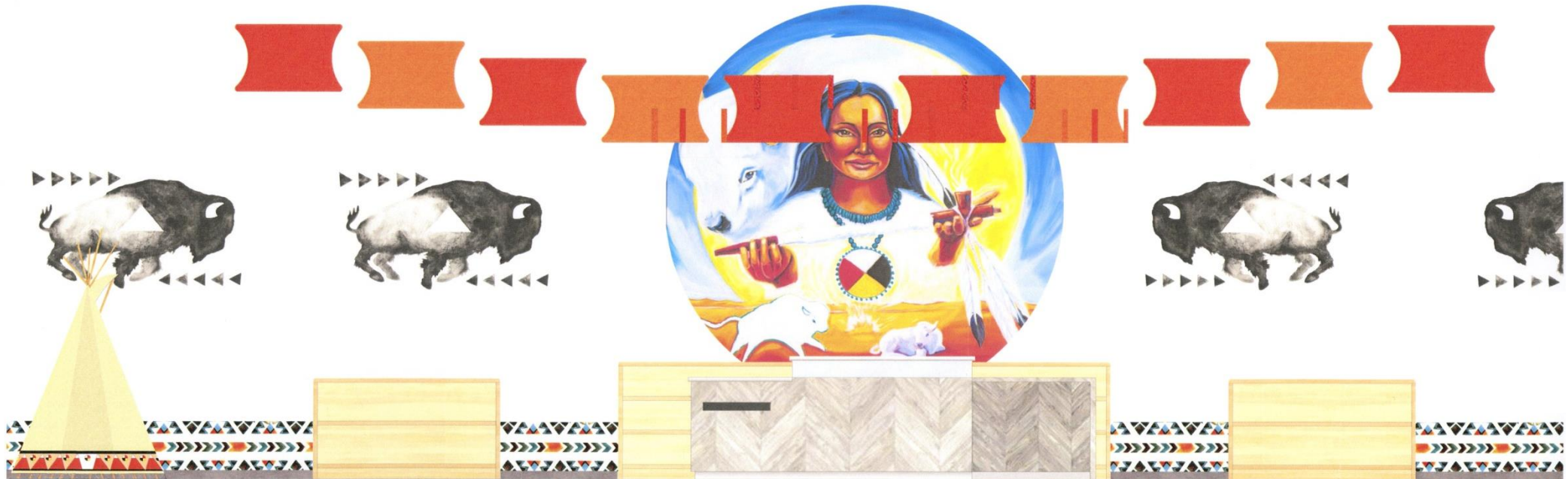
- Color white and orange
- Mind
- Philosophy
- Education
- Wisdom



Within the Library I chose to use the shape of the arrow head for the angled placement of the book cases and the ceiling baffles to direct the eye through the area. Along the North wall I used Tee-Pee's for private reading spaces and the actual Buffalo hoof shape for the large seating area in front of the glass enclosed play room for parents to be able to sit comfortably to watch closely.



1 LIBRARY FLOOR PLAN
ID35 SCALE: 1/8"=1'-0"



1 LIBRARY ENTRY & RECEPTION DESK ELEVATION
ID36 SCALE: 1/2"=1'-0"

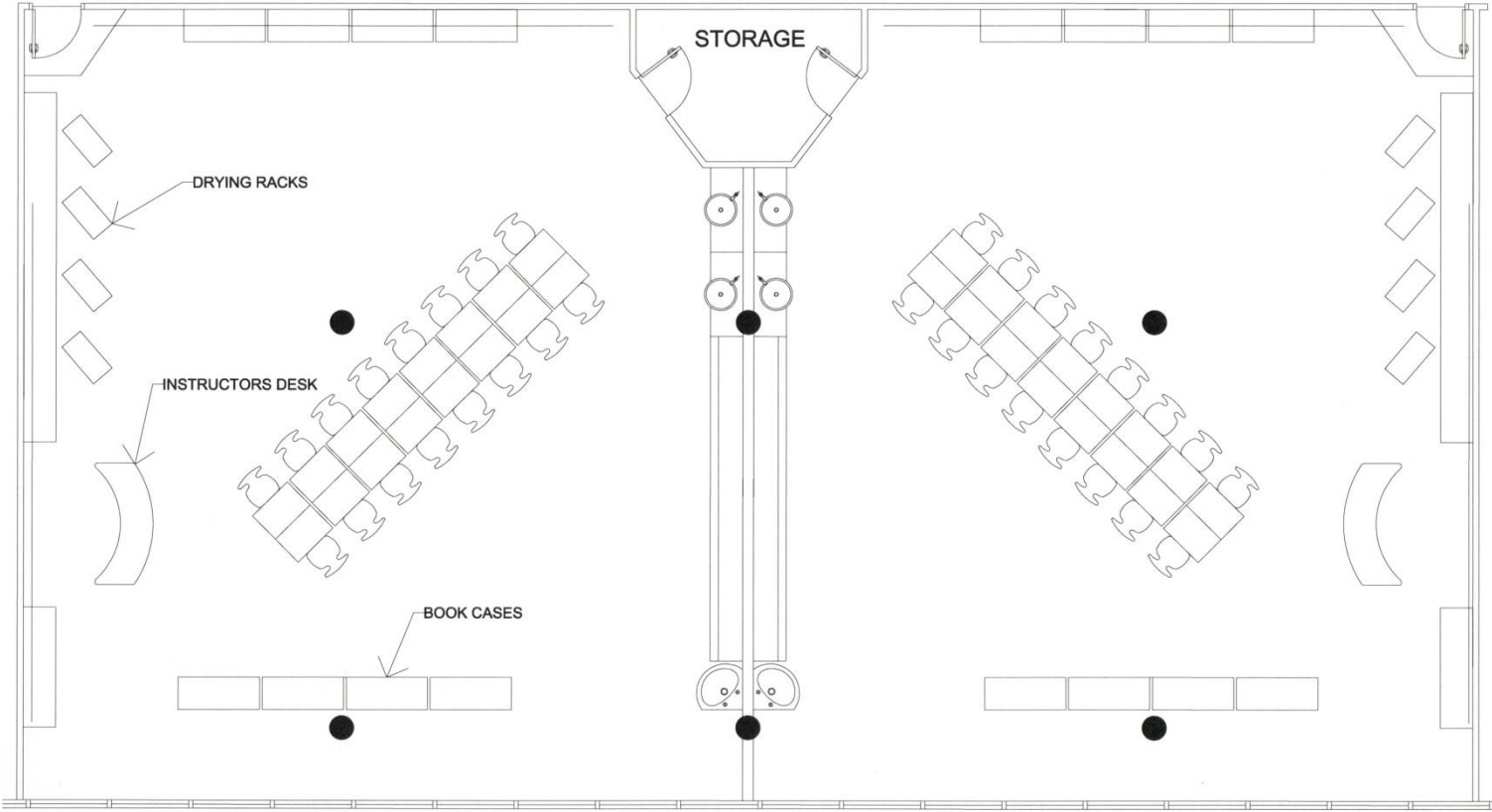
Spirit of the Bald Eagle

REPRESENTATION

- Color red
- Art
- Writing
- Creating
- Direction



I incorporated the overall Shape and form of the eagle Head and body for the space planing and furniture placement of the class rooms.to create the concept of each class being the left and right wing and the storage room taking the shape of the eagle head.



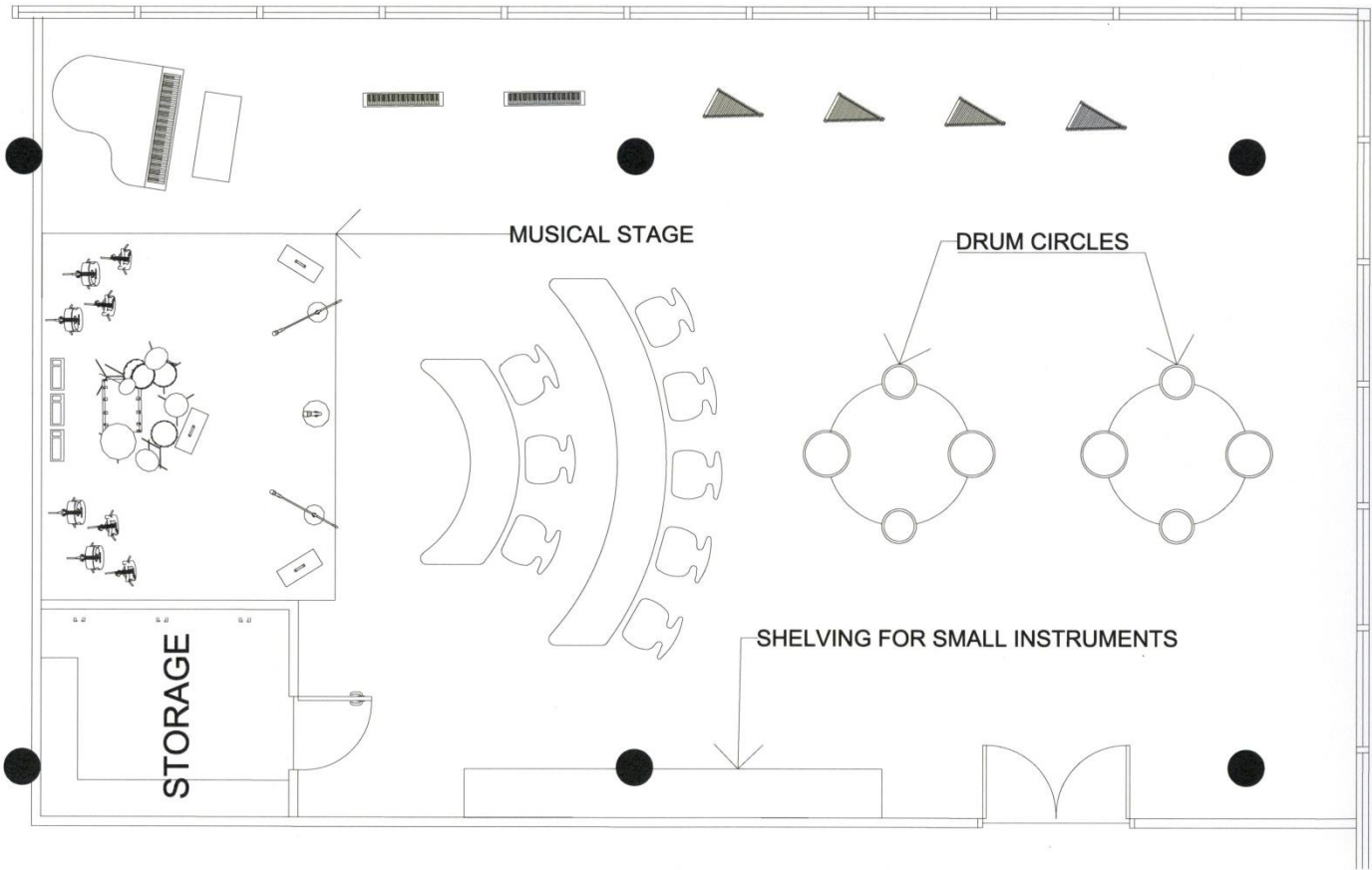
1 RIGHT & LEFT WING CLASS ROOM FLOOR PLAN
ID37 SCALE: 1/8"=1'-0"

Spirit of the Buffalo

REPRESENTATION

- Color white and orange
- Mind
- Philosophy
- Education
- Wisdom

I used the Buffalo for the music room because many of native American musical instruments actually came from the Buffalo, including the native pow wow drum made from the buffalo's rawhide, rattles or talking sticks were made from the hooves and teeth as well flutes were made from bone.



1 MUSIC ROOM FLOOR PLAN
ID38 SCALE: 3/16"=1'-0"

BIBLIOGRAPHY

- <https://snapyourcolors.com/Chip/GtV4rn>
- <https://www.stickerart.com/products/spirit-bear-sticker?variant=537726713862>
- <https://fineartamerica.com/profiles/1-linda-henry/shop>
- <http://imaginationgroup.ca/art-cards/collection/ernie-scoles>
- <http://imaginationgroup.ca/art-cards/collection/ernie-scoles>
- <http://slideplayer.com/slide/5964906/>
- <http://yolandasdrams.com/all-products-2/>
- <https://www.sacredessence.co.uk/drums-rattles-flutes-c1/rattles-maracas-c22/native-american-indian-mimbres-buffalo-talking-stick-gourd-rattle-xl-mixed-designs-sold-individually-p1836>
- <https://www.vecteezy.com/free-vector/tree-clipart>
- <http://www.dancingtoeaglespiritsociety.org/medwheel.php>
- <http://my.kwic.com/~pagodavista/schoolhouse/species/birds/nesting.htm>
- <https://clipartxtras.com/categories/view/b36efae110dee611eeeb951374bdc0a57db9ce7c/bald-eagle-feather-drawing.html>
- https://www.shutterstock.com/search/zentangle+animal?page=4&searchterm=zentangle%20animal&image_type=vector
- <https://www.saatchiart.com/art/Painting-Dances-with-Wolves/290311/1754999/view>
- <http://stevellarese.com/green-brown-color/green-brown-color-brown-green-color-palette-ideas/>
- https://libguides.uleth.ca/archaeology_great_plains/visual_resources
- <https://inhabitat.com/gorgeous-glass-house-in-the-mountains-of-kazakhstan-envelops-an-entire-tree/>
- <https://newsela.com/read/lib-native-americans-plains/id/31615/>
- <https://theresawolfatmydoor.com/page/2/>
- <http://abrarkhan.me/2018/04/tornado-foosball-table-parts.htm-l/rated-in-foosball-tables-u-helpful-customer-reviews-amazoncom-sheltprofoosiiicoiнопcommercialfoosballtable-sheltprofoosiiicoiнопcommercialfoosballtable-tornado-foosball-table-parts-best-jpg>
- <https://www.gametablesonline.com/60-playcraft-sport-shoot-out-air-hockey-table.html>
- <http://drericanthonyjohnson.com/the-community-factor/512/>
- <http://drericanthonyjohnson.com/the-community-factor/512/>
- <http://www.phamnews.co.uk/rocky-first-quarter-for-engineering-services/>