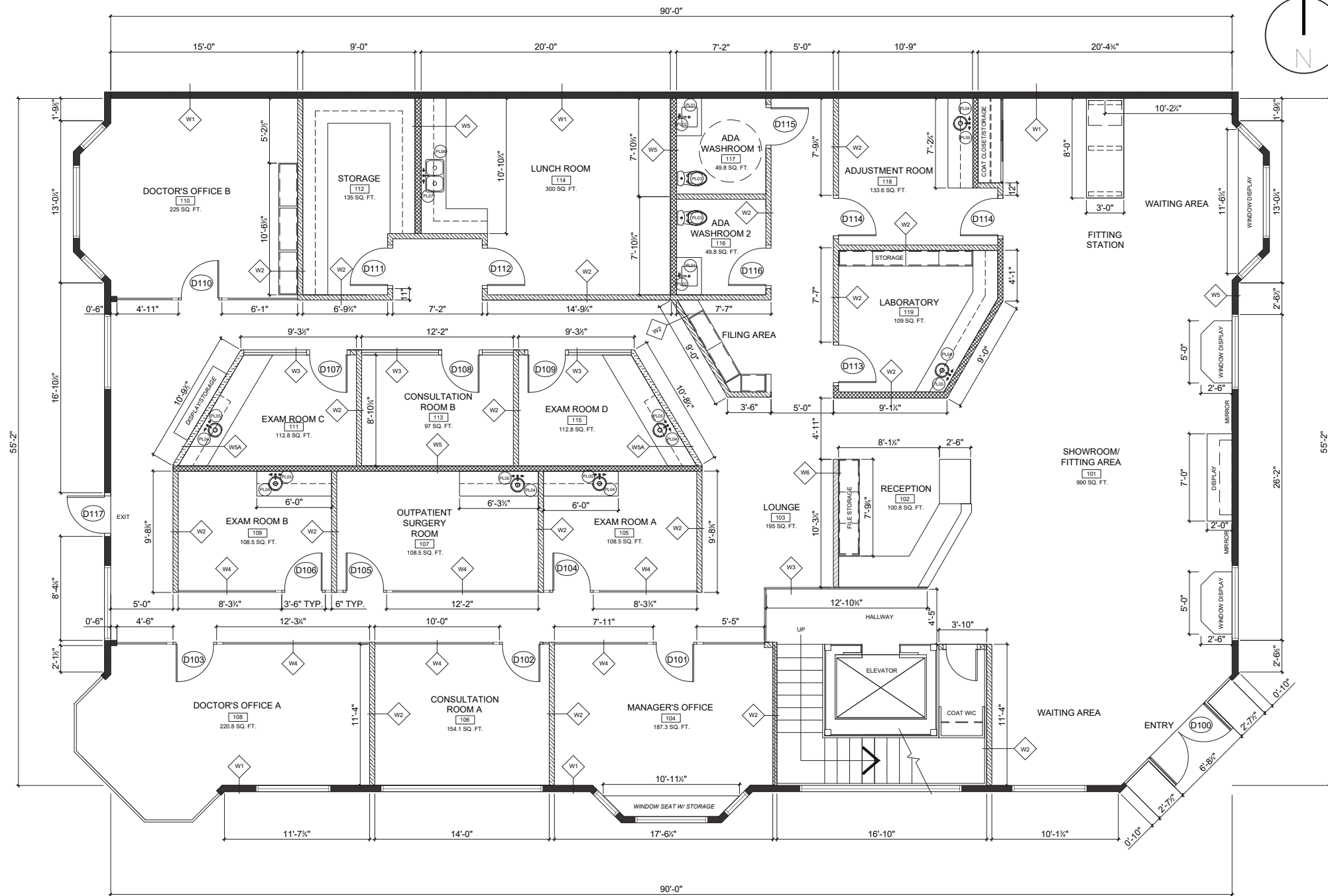


# CONSTRUCTION PLAN



**01 CONSTRUCTION PLAN**  
A-200 SCALE: 1/4" = 1' - 0"

## WALL SCHEDULE

SYMBOL	WALL TYPE	PARTITION ASSEMBLIES
	WALL TYPE 1	STUCCO (VINYL SIDING) W/ 2 LAYERS 30 MIN. #2 X 2 PRESSURE TREATED STRAPPING #2 PLYWOOD SHEATHING 2" X 8" STUDS @ 16" O.C. W/ R28 BATT INSULATION 6 MIL. VAPOUR BARRIER; 1/2" DRYWALL
	WALL TYPE 2	5/8" TYPE 'X' G.W.B. 3 5/8" STEEL STUDS @ 16 O.C. FILL WITH FRICTION FIT ACOUSTIC BATT INSULATION, 5/8" TYPE 'X' G.W.B. SLAB TO SLAB
	WALL TYPE 3	5/8" TYPE 'X' G.W.B. 3 5/8" STEEL STUDS @ 16 O.C. FILL WITH FRICTION FIT ACOUSTIC BATT INSULATION, 5/8" TYPE 'X' G.W.B. SLAB TO SLAB W/ 12 MM THICK FRAMELESS CLEAR TEMPERED GLASS IN ALUMINUM U CHANNEL AT TOP. GLASS PANELS TO BE BUTT JOINTED W/ MAX 1/8" GAP BETWEEN PANELS & CLEAR SILICONE CAULKING. COLORED TRANSLUCENT FILM TO BE APPLIED TO ONE SIDE OF GLASS. REFER TO ELEVATIONS FOR ADDITIONAL INFO.
	WALL TYPE 4	12 MM THICK FRAMELESS FULL HEIGHT CLEAR TEMPERED GLASS IN ALUMINUM U CHANNEL AT TOP. GLASS PANELS TO BE BUTT JOINTED W/ MAX 1/8" GAP BETWEEN PANELS & CLEAR SILICONE CAULKING. COLORED TRANSLUCENT FILM TO BE APPLIED TO ONE SIDE OF GLASS. REFER TO ELEVATIONS FOR ADDITIONAL INFO.
	WALL TYPE 5	5/8" G.W.B. 6" STEEL STUDS @ 16 O.C. FILL WITH ACOUSTIC BATT INSULATION, 5/8" G.W.B. FROM SLAB TO UIS OF SLAB.
	WALL TYPE 5A	5/8" G.W.B. 6" STEEL STUDS @ 16 O.C. FILL WITH ACOUSTIC BATT INSULATION, 5/8" G.W.B. FROM SLAB TO UIS OF SLAB W/ 2 MM THICK FRAMELESS CLEAR TEMPERED GLASS IN ALUMINUM U CHANNEL AT TOP. GLASS PANELS TO BE BUTT JOINTED W/ MAX 1/8" GAP BETWEEN PANELS & CLEAR SILICONE CAULKING. COLORED TRANSLUCENT FILM TO BE APPLIED TO ONE SIDE OF GLASS. REFER TO ELEVATIONS FOR ADDITIONAL INFO.

## CONSTRUCTION PLAN NOTES:

1. CONTRACTOR SHALL COMPLY WITH THE RULES AND REGULATIONS FOR THE CONSTRUCTION WITHIN THE BUILDING AS SET OUT BY THE OWNER.
2. CONTRACTOR TO COORDINATE WORK WITH THE BUILDING MANAGER. ANY WORK WHICH MAY DISRUPT OTHER OCCUPANTS' ACTIVITY SHALL BE DONE AFTER THE NORMAL BUSINESS HOURS. CONTRACTOR TO ENSURE CONTAMINANTS ARE TO BE SPREAD TO ADJACENT AREAS.
3. DESIGN CONSULTANT'S DRAWINGS SHALL BE READ IN CONJUNCTION WITH STRUCTURAL, MECHANICAL, AND ELECTRICAL CONSULTANT'S DRAWINGS.
4. CONTRACTOR SHALL CONFIRM ALL DIMENSIONS ON SITE PRIOR TO CONSTRUCTION. DISCREPANCIES IN DRAWINGS SHALL BE REPORTED TO THE DESIGNER PRIOR TO SUBMISSION. NO CONTRACT REVISIONS OR EXTRAS WILL BE ALLOWED FOR FAILURE TO VERIFY SITE CONDITIONS AND DIMENSIONS.
5. CONTRACTOR SHALL COORDINATE FINAL INSPECTION DATE WITH DESIGNER TO MOVE IN.
6. CONTRACTOR SHALL CONFIRM SIZES OF OWNER'S EQUIPMENT & APPLIANCES
7. CONTRACTOR SHALL PROTECT EXISTING FINISHES FROM DAMAGE DURING CONSTRUCTION. REPAIR AND MAKE GOOD ALL SURFACES AFFECTED BY DEMOLITION/CONSTRUCTION.
8. CONSTRUCTION TO ALL PARTITION TYPES MUST MAINTAIN ACOUSTICAL INTEGRITY & FIRE RATING OF WALL.
9. CONTRACTOR TO INSTALL NECESSARY BLOCKING IN WALL AT LOCATION OF NEW MILLWORK, FURNISHINGS, FIXTURES, AND EQUIPMENT PRIOR TO GWB BEING INSTALLED. INSTALL LEVEL AND PLUMB, RIGIDLY ANCHORED TO SUBSTRATE.
10. TELEPHONE & DATA ARE TO BE SUPPLIED & INSTALLED BY CLIENT. CONTRACTOR TO SUPPLY & INSTALL ALL REQUIRED CONDUIT & BOXES (AS PER ELECTRICAL DRAWINGS).
11. ALL COUNTERS TO BE 24" DEEP UNLESS OTHERWISE NOTED ON THE PLAN.

# ELECTRICAL PLAN



## ELECTRICAL PLAN LEGEND

WIRING, POWER RECEPTACLES AND DATA

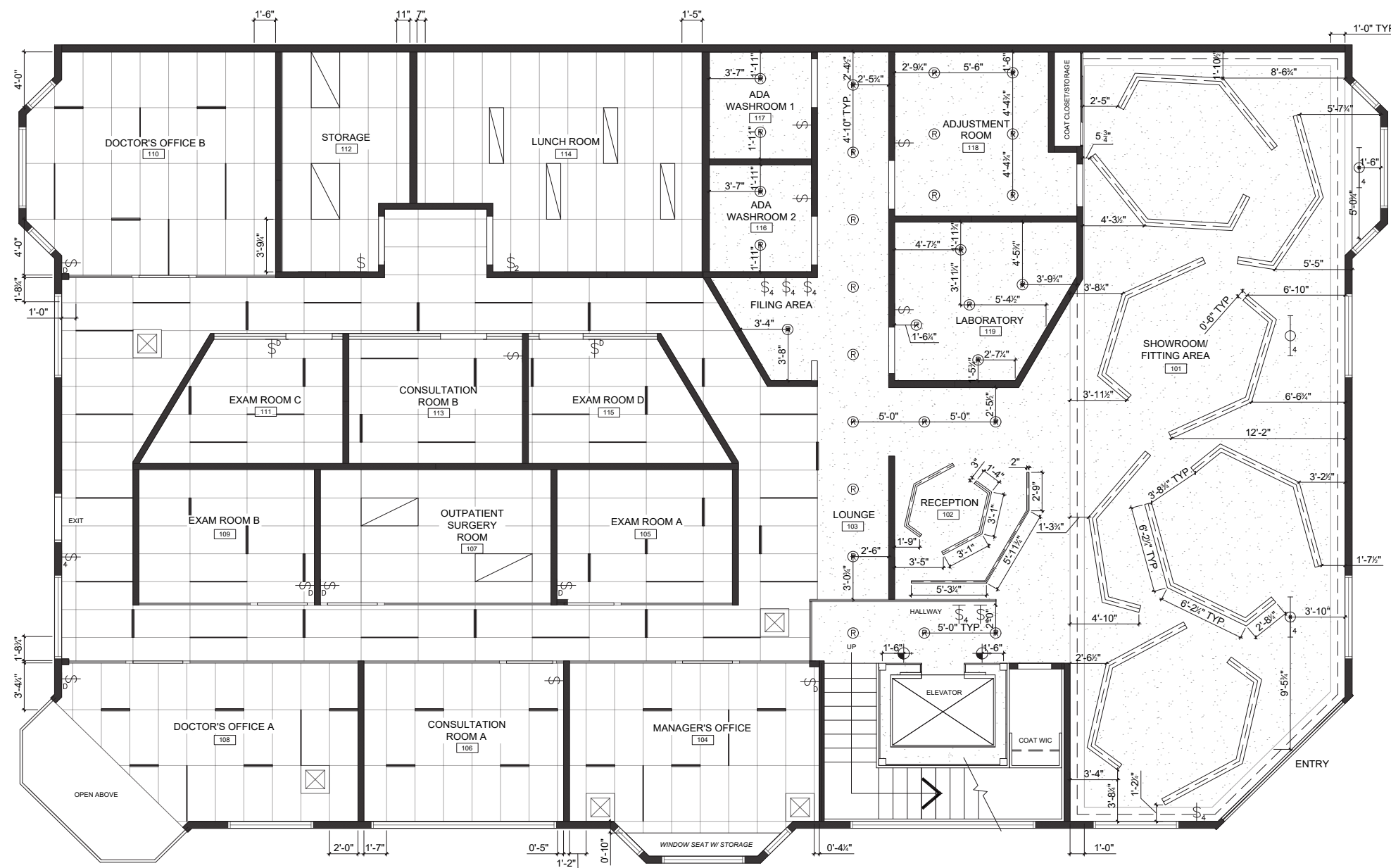
SYMBOL	TYPE
	DUPLEX POWER RECEPTACLE (AT COUNTER HEIGHT W/ "C")
	QUADRUPLEX POWER RECEPTACLE (AT COUNTER HEIGHT W/ "C")
	DUPLEX POWER RECEPTACLE FLUSH FLOOR MOUNTED
	QUADRUPLEX RECEPTACLE FLUSH FLOOR MOUNTED
	TELEPHONE OUTLET
	DATA OUTLET
	COMBINATION OF DATA AND TELEPHONE OUTLET

## ELECTRICAL PLAN NOTES:

1. THIS DRAWING IS FOR LOCATION ONLY. REFER TO ENGINEERS' DRAWINGS FOR ALL LIFE SAFETY SYSTEMS AND REVISIONS, FIRE PULL STATIONS AND ALARMS, THERMOSTATS, PANELS, AND CIRCUITING INFORMATION.
2. ALL ELECTRICAL/COMMUNICATIONS WORK TO COMPLY WITH THE REQUIREMENTS OF AUTHORITIES HAVING JURISDICTION. ANY CHANGES REQUIRED SHALL BE APPROVED BY THE DESIGNER PRIOR TO PROCEEDING.
3. WHERE RECEPTACLES ARE MOUNTED ON OPPOSITE SIDES OF THE SAME PARTITION, STAGGER POSITION TO RETAIN ACOUSTIC ATTENUATION OF PARTITION. OFFSET DIMENSION TO BE MINIMAL.
4. ALL ELECTRICAL NOTED AT COUNTER ("C") TO BE INSTALLED AT 6" ABOVE COUNTER HEIGHT.
5. UNLESS NOTED OTHERWISE, ALL RECEPTACLES TO BE MOUNTED VERTICALLY @ 12" TO CENTRE LINE OF RECEPTACLE FROM FINISHED FLOOR.
6. WHERE TWO (2) OR MORE RECEPTACLES ARE LOCATED SIDE BY SIDE, RECEPTACLES ARE TO BE GANGED WITH A SINGLE COVER PLATE. WHERE RECEPTACLES OCCUR ONE ABOVE THE OTHER, ALIGN THEM VERTICALLY.
7. THIS DRAWING SHOWS ONLY NEW OUTLETS AND RECEPTACLES. EXISTING OUTLETS TO REMAIN. ENSURE EXISTING COVER PLATES MATCH WITH NEW. COVER PLATED TO BE CHROME.
8. ALL OUTLETS MOUNTED AT 33" OR HIGHER, TO BE MOUNTED HORIZONTALLY.

01 ELECTRICAL PLAN  
A-300 SCALE: 1/4" = 1' - 0"

# REFLECTED CEILING PLAN



**01 REFLECTED CEILING PLAN**  
A-301 SCALE: 1/4" = 1' - 0"

### LIGHTING NOTES:

1. ALL CEILING SHOULD BE 9'-0" ABOVE FLOOR UNLESS OTHERWISE INDICATED.
2. THIS DRAWING IS TO BE READ IN CONJUNCTION WITH MECHANICAL AND ELECTRICAL ENGINEERS DRAWINGS. REPORT ANY DISCREPANCIES TO DESIGNER PRIOR TO COMMENCEMENT OF WORK.
3. CONTRACTOR TO ENSURE ALL ELECTRICAL AND MECHANICAL INSTALLATIONS TO COMPLY WITH REQUIREMENTS OF AUTHORITIES HAVING JURISDICTION. ANY REQUIRED CHANGES ARE TO BE APPROVED BY THE DESIGNER PRIOR TO PROCEEDING.
4. MOUNT ALL SWITCHES BESIDE DOORS AND 6" FROM ADJACENT DOOR FRAME UNLESS OTHERWISE NOTED. USE GANG SWITCH PLATES WHERE MULTIPLE SWITCHING AT ONE LOCATION.
5. ALL SWITCHES ARE TO BE INSTALLED AT 42" AT CENTRE LINE OF SWITCH FROM FINISHED FLOOR UNLESS NOTED.
6. REPORT ANY INTERFERENCE OF FIXTURES AND ACCESS PANELS WITH MECHANICAL, ELECTRICAL OR STRUCTURAL SYSTEMS IMMEDIATELY.

### REFLECTED CEILING PLAN LEGEND

#### LIGHT FIXTURES

SYMBOL	TYPE
(R)	RECESSED LIGHT FIXTURE
⊙	LED WALL SCONCE TO BE MOUNTED AT 54" AFF
⊖	CEILING OR WALL MOUNTED TRACK LIGHTING - LENGTH & NO. OF FIXTURE ON PLAN
—	2' T-BAR LED CROSS TEE LIGHT COMPATIBLE WITH 2/16" T-BARS
—	4' T-BAR LED CROSS TEE LIGHT COMPATIBLE WITH 2/16" T-BARS
□	2' X 4' RECESSED FLUORESCENT LIGHT FIXTURE
□	1' X 4' RECESSED FLUORESCENT LIGHT FIXTURE
▬	CEILING REVEAL W/ LED STRIP LIGHTING (DIMENSIONS OF REVEAL ON PLAN)
XX'-XX" AFF	CEILING HEIGHT

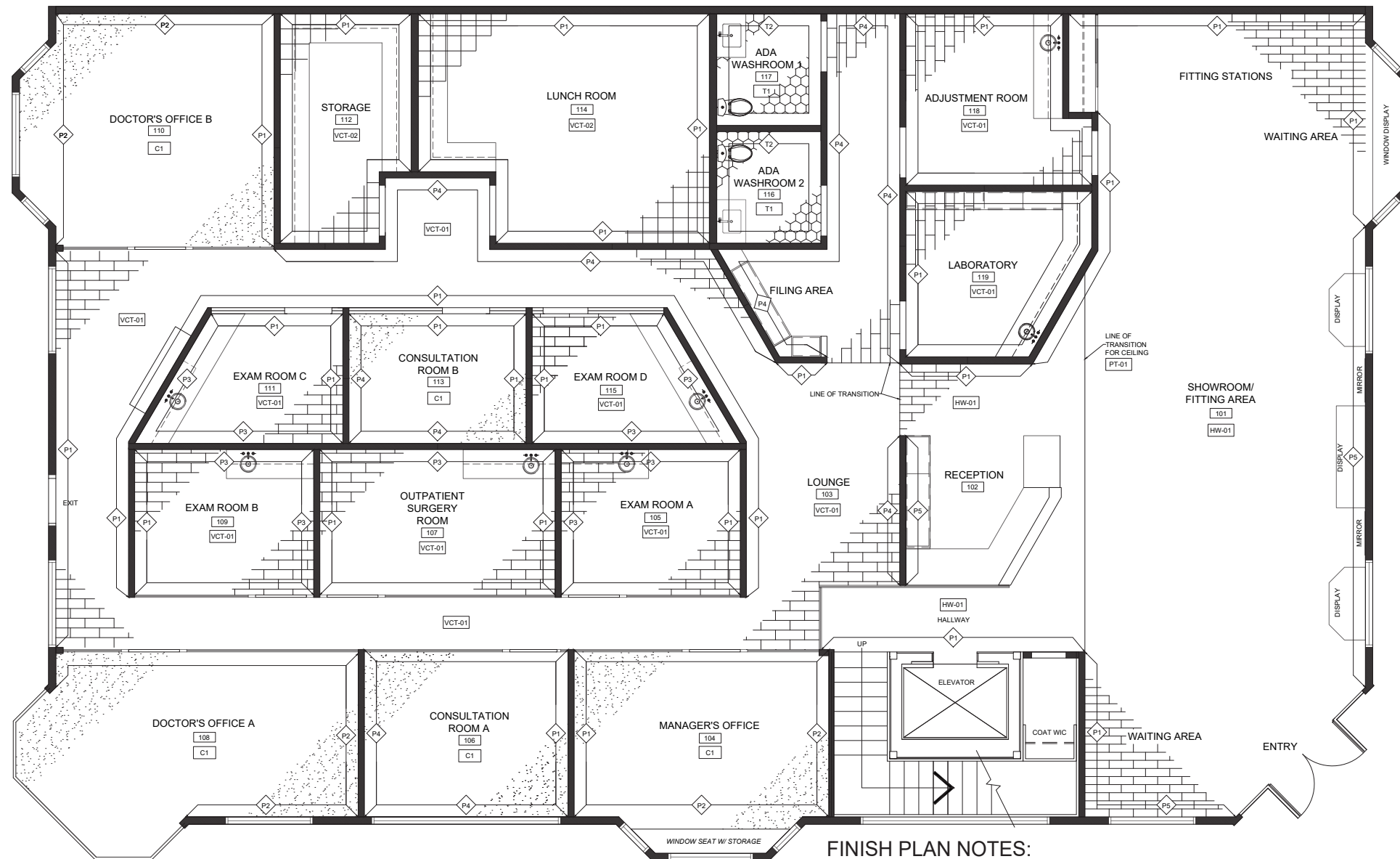
#### SWITCHES

SYMBOL	TYPE
⊙	SWITCH
⊙ <sub>3</sub>	THREE WAY SWITCH
⊙ <sub>4</sub>	FOUR WAY SWITCH
⊙ <sub>D</sub>	DIMMER SWITCH

#### CEILING & HVAC

SYMBOL	TYPE
□	INDICATES 2' X 4' ACOUSTICAL TILE WITH T-BAR CEILING
□	INDICATES GWB CEILING. HEIGHT AS SHOWN
⊗	INDICATES 2' X 2' HVAC

# FINISHES PLAN



## FLOOR FINISHES LEGEND

CARPET		VINYL COMPOSITION TILE	
C1	PRODUCT: CARPET TILE MFG: SHAW FLOORS NAME/CODE: STRATA 5A220 COLOUR: CARRARA 20100 INSTALLATION: TBD SIZE: TBD	VCT-01	MFG: ARMSTRONG FLOORS NAME/CODE: NA193 PATTERN: STRAIGHT LAY/VILA OAK COLOUR: VIENNA SMOKE INSTALLATION: GLUE
HW-01	PRODUCT: HARDWOOD MFG: MERCIER NAME/CODE: DOLOMITE COLOUR: WHITE OAK INSTALLATION: NAILED SIZE: 6"	VCT-02	MFG: ARMSTRONG FLOORS NAME/CODE: 55803 PATTERN: STRAIGHT LAY COLOUR: PREMIUM EXCELON RAFFIA INSTALLATION: GLUE
T1	PRODUCT: PORCELAIN TILE MFG: JULIAN TILE NAME/CODE: KWATAHXIN COLOUR: TAUPE GROUT: WHITE INSTALLATION: STRAIGHT LAY SIZE: 9.75" X 10.75"	B1	PRODUCT: RUBBER WALL BASE MFG: ARMSTRONG FLOORS COLOUR: COLOUR INTEGRATED SIZE: 4"
T2	PRODUCT: PORCELAIN TILE MFG: JULIAN TILE NAME/CODE: MATS/1224 COLOUR: SABBIA GROUT: WHITE INSTALLATION: STRAIGHT LAY SIZE: 11.75" X 23.5"	<b>CEILING FINISHES LEGEND</b>	

## WALL FINISHES LEGEND

PAINT	
P1	PRODUCT: PAINT MFG: BENJAMIN MOORE NAME/CODE: OC-57 COLOUR: WHITE HERON FINISH: MATTE
P2	PRODUCT: PAINT MFG: BENJAMIN MOORE NAME/CODE: PM-14 COLOUR: ANNAPOLIS GRAY FINISH: MATTE
P3	PRODUCT: PAINT MFG: BENJAMIN MOORE NAME/CODE: 2062-70 COLOUR: HARBOUR FOG FINISH: MATTE
P4	PRODUCT: PAINT MFG: BENJAMIN MOORE NAME/CODE: AF-525 COLOUR: FUJI FINISH: MATTE
P5	PRODUCT: PAINT MFG: BENJAMIN MOORE NAME/CODE: 2059-10 COLOUR: MARINE BLUE FINISH: SATIN

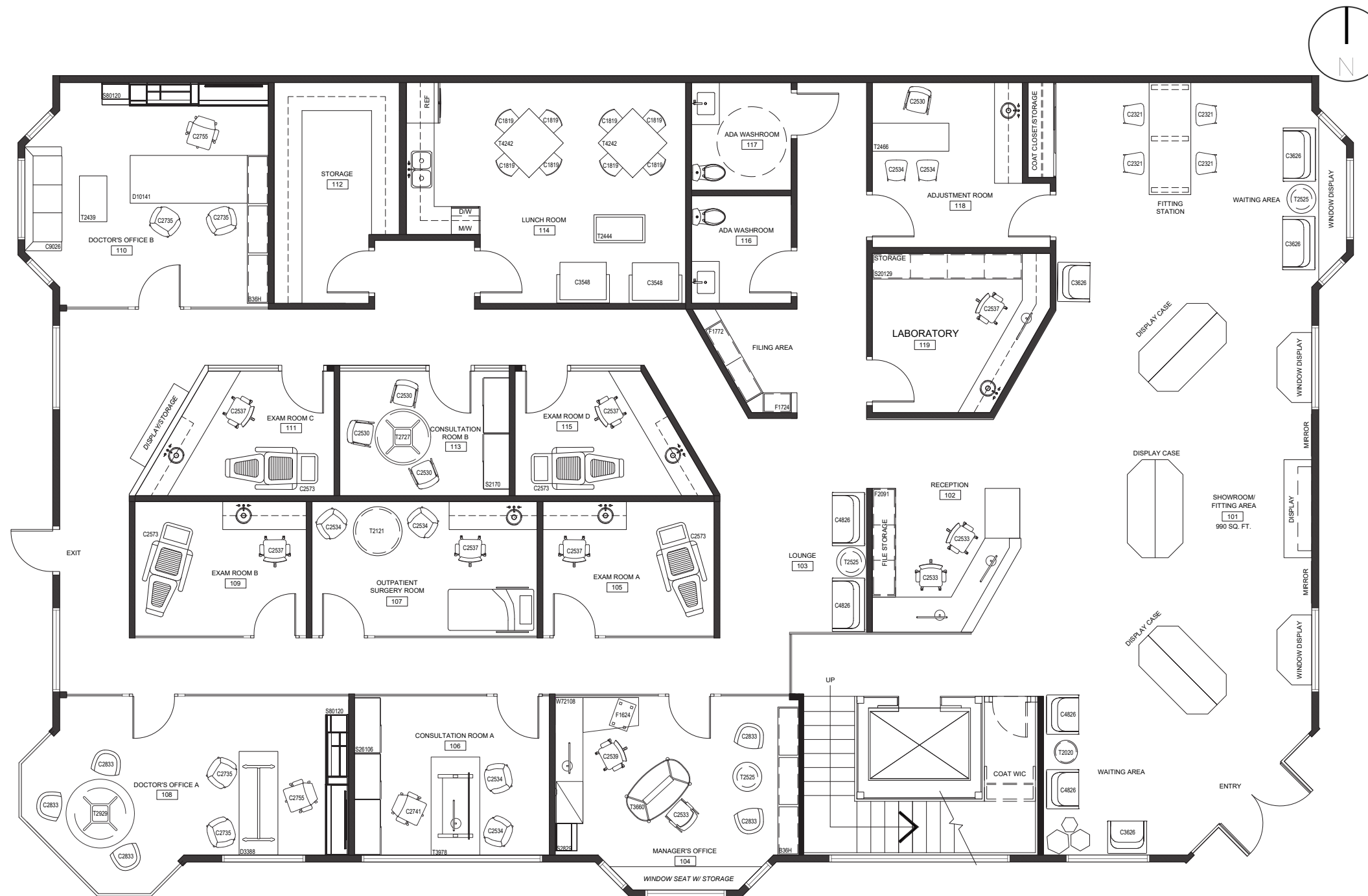
## FINISH PLAN NOTES:

1. REFER TO REFLECTED CEILING PLAN FOR PAINT FINISHES FOR BULKHEADS AND DRYWALL CEILINGS.
2. ALL FLOORING TRANSITIONS ARE TO OCCUR AT THE CENTERLINE OF THE DOOR.
3. ENSURE ALL FLOOR TRANSITIONS ARE LEVEL, FEATHER BACK SUBSTRATE TO ENSURE SMOOTH TRANSITION.
4. WHEN INSTALLING FLOOR TILE, ENSURE THAT PERIMETER PIECES ARE NOT LESS THAN 50% OF THE LENGTH OR WIDTH.
5. WHEN INSTALLING CARPET TILE, ENSURE THAT PERIMETER PIECES ARE NOT LESS THAN 50% OF THE LENGTH OF WIDTH.
6. LOWER CABINETS ARE TO BE INSTALLED PRIOR TO FLOORING.
7. ALL CEILING TO HAVE PT-02 UNLESS OTHERWISE NOTED.
8. ALL BASES TO BE B1 UNLESS OTHERWISE NOTED.

01 FINISHES PLAN  
A-400 SCALE: 1/4" = 1' - 0"



# INSTALLATION PLAN



## STORAGE AND FILING

### S80120 - SUITE PERSONAL STORAGE WALL

MFG: HAWORTH  
 CODE: QWZF-19CO-FGHL-RHW  
 SIZE (HDW): 80 3/4" x 19" x 120"  
 MATERIAL: WOOD  
 COLOUR: 5TH AVE ELM (7966K-38)

### S26106 - LUXOR LOW CABINET W/ SLIDING DOORS

MFG: HAWORTH  
 CODE: HCCE-LXDA-LD  
 SIZE (HDW): 26" x 17 3/4" x 106 1/4"  
 MATERIAL: HIGH DENSITY FIBER PANELS  
 COLOUR: MATTE MAGNOLIA 6R-46

### S2170 - LUXOR LOW CABINET W/ 2 FLAP DOORS

MFG: HAWORTH  
 CODE: HCCE-LXCA-LD  
 SIZE (HDW): 21 1/2" x 17 3/4" x 70 1/4"  
 MATERIAL: HIGH DENSITY FIBER PANELS  
 COLOUR: MATTE MAGNOLIA 6R-46

### S2829 - COMPOSE LATERAL FILES

MFG: HAWORTH  
 CODE: BZL2-2430-WW-KW-L8-QQN  
 SIZE (HDW): 28 x 16.93" x 29.88"  
 MATERIAL: WOOD  
 COLOUR: 5TH AVE ELM (7966K-38)

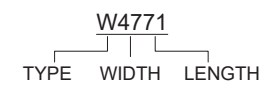
### F1624 - X-SERIES PEDESTAL

MFG: HAWORTH  
 CODE: JPMH-24  
 SIZE (HDW): 21" x 23" x 15"  
 MATERIAL: WOOD  
 COLOUR: WHITE

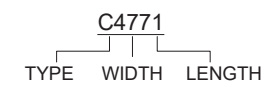
**01** INSTALLATION PLAN  
 A-500 SCALE: 1/4" = 1' - 0"

## KEYS

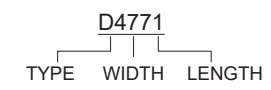
### WORKSURFACES



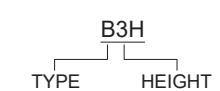
### CHAIRS



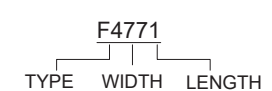
### DESKS



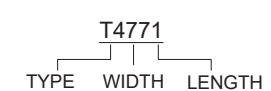
### BOOKSHELVES



### FILING

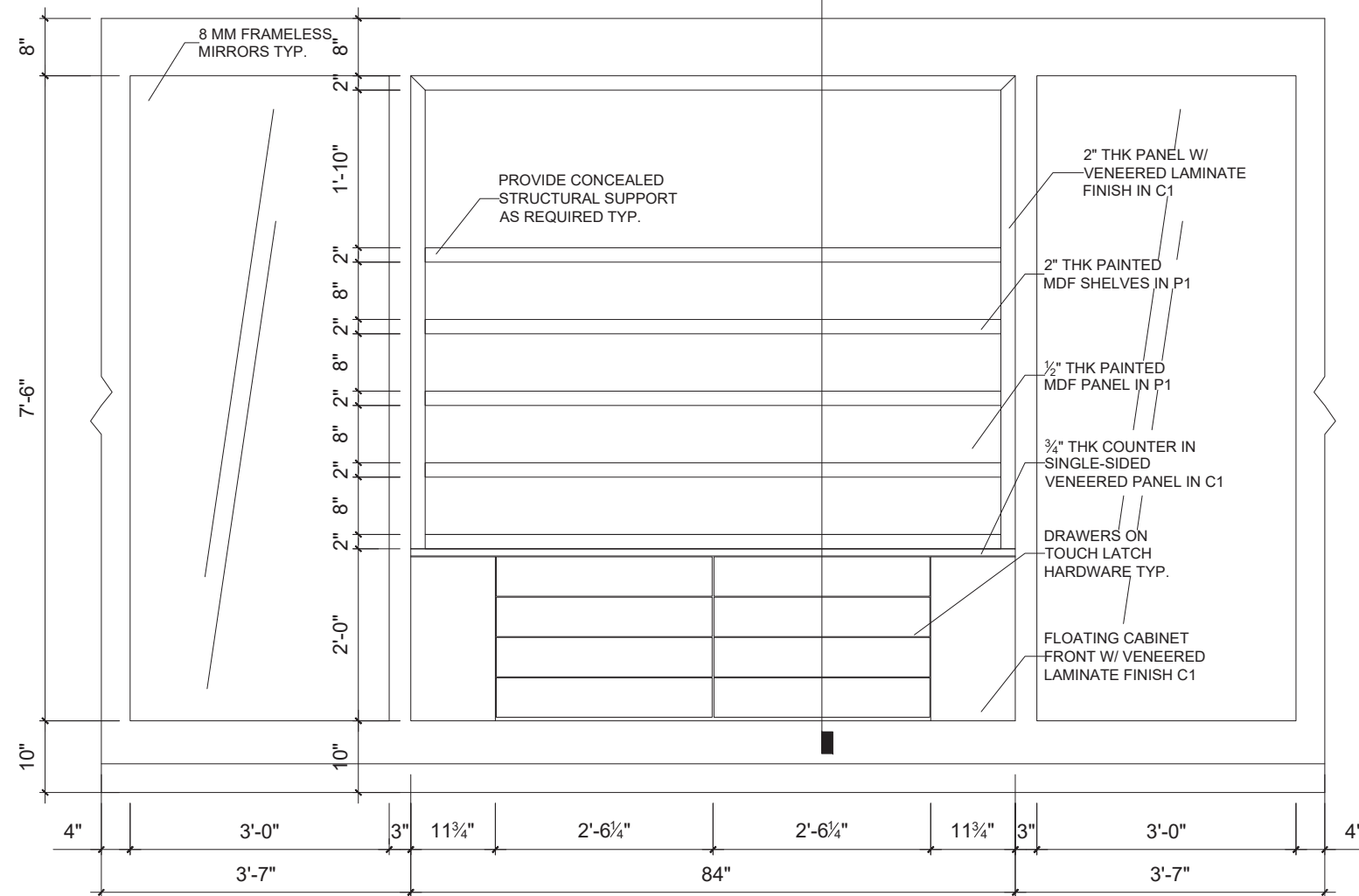


### TABLES



# DISPLAY ELEVATION

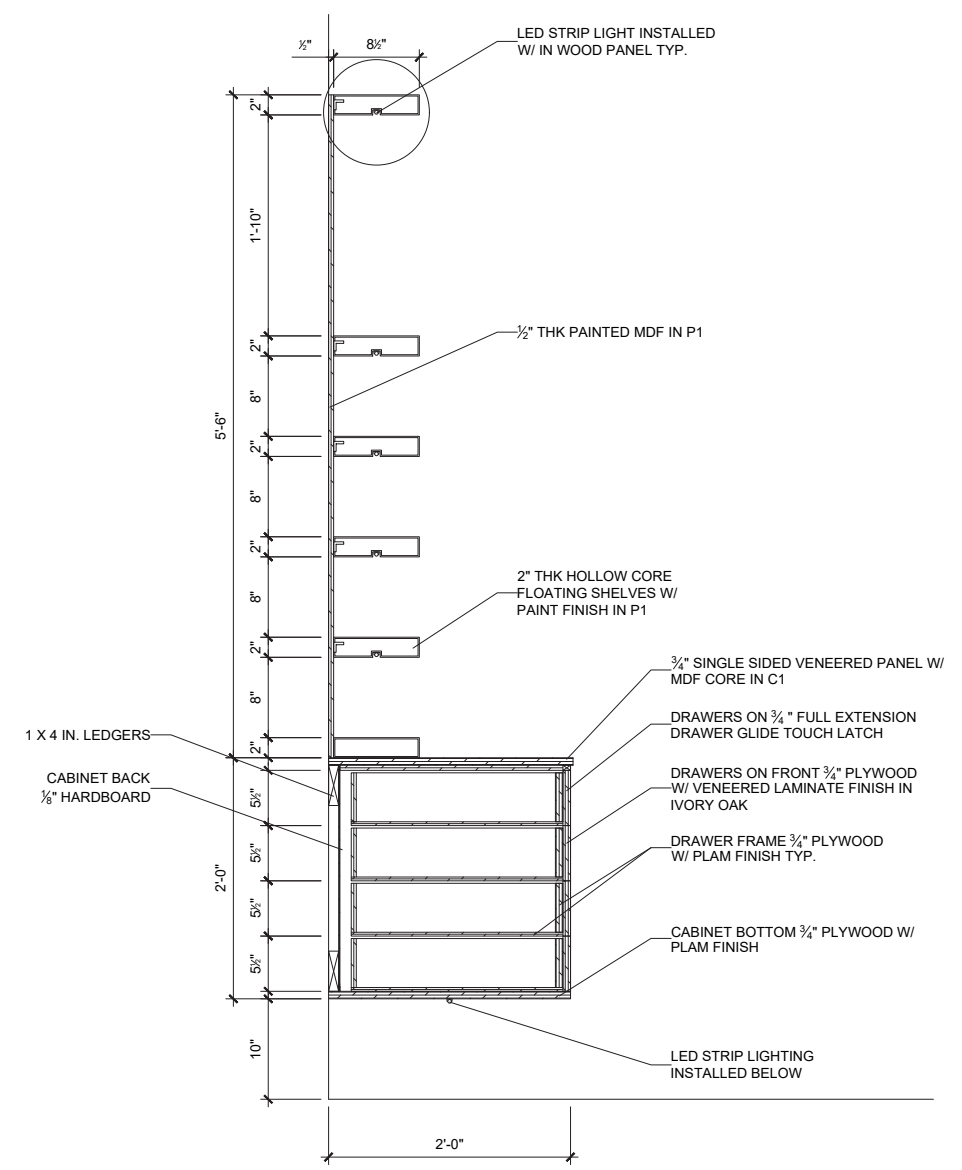
02  
A-601



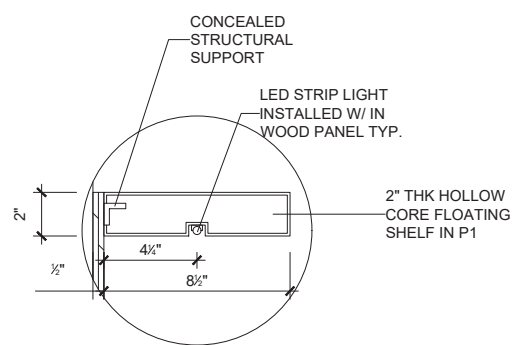
01 FEATURE DISPLAY CABINET ELEVATION  
A-601 SCALE: 1" = 1' - 0"

**MILLWORK NOTES:**

1. ALL MILLWORK TO BE BUILT TO PREMIUM AWMAR STANDARD
2. MILLWORKER TO INSTALL CONCEALED SUPPORT WHERE REQUIRED FOR STRUCTURAL INTEGRITY.
3. MILLWORKER TO REFER TO ELECTRIC PLAN AND WORK WITH ELECTRICIAN TO COORDINATE SUPPLY AND HOOKUP OF LED LIGHT.

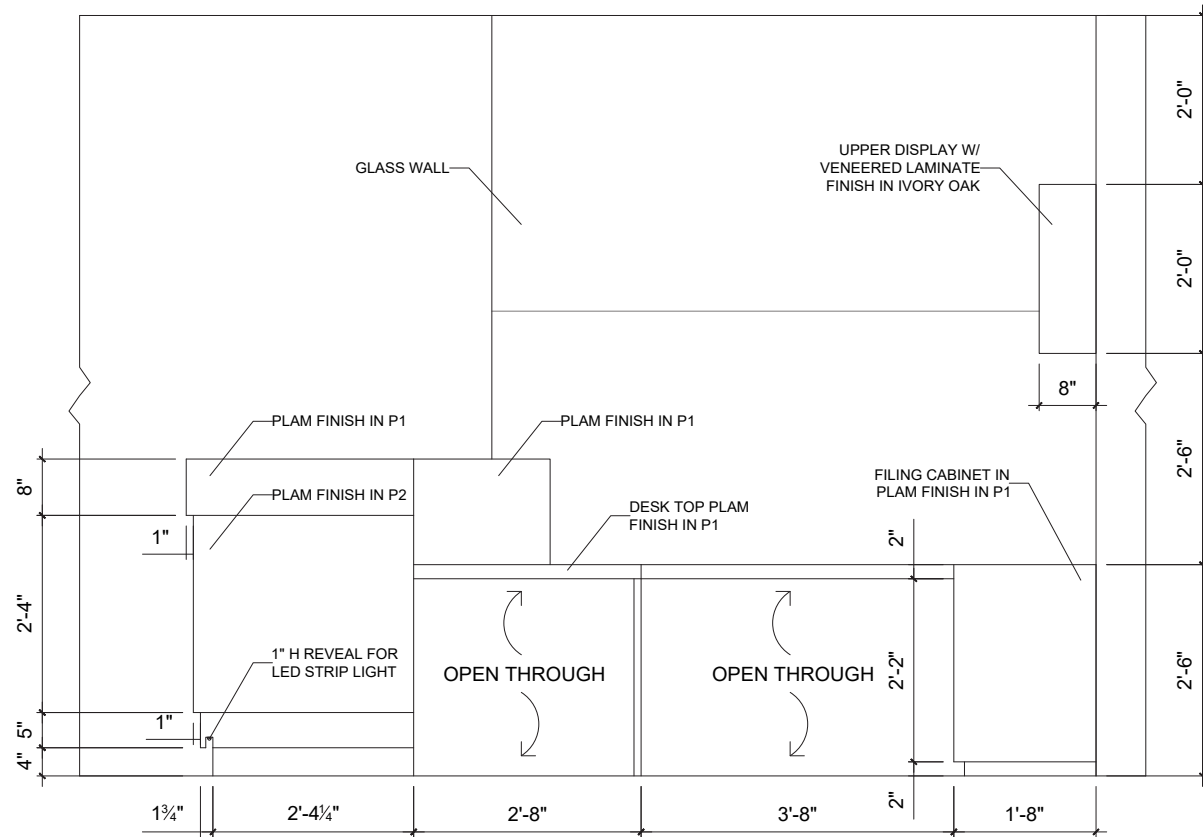


02 FEATURE DISPLAY CABINET SECTION  
A-601 SCALE: 1" = 1' - 0"

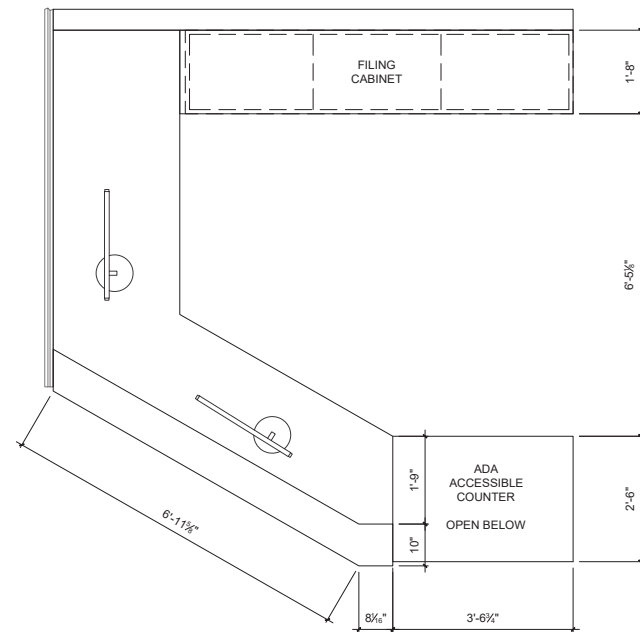


03 FEATURE DISPLAY CABINET DETAIL  
A-601 SCALE: 1" = 1' - 0"

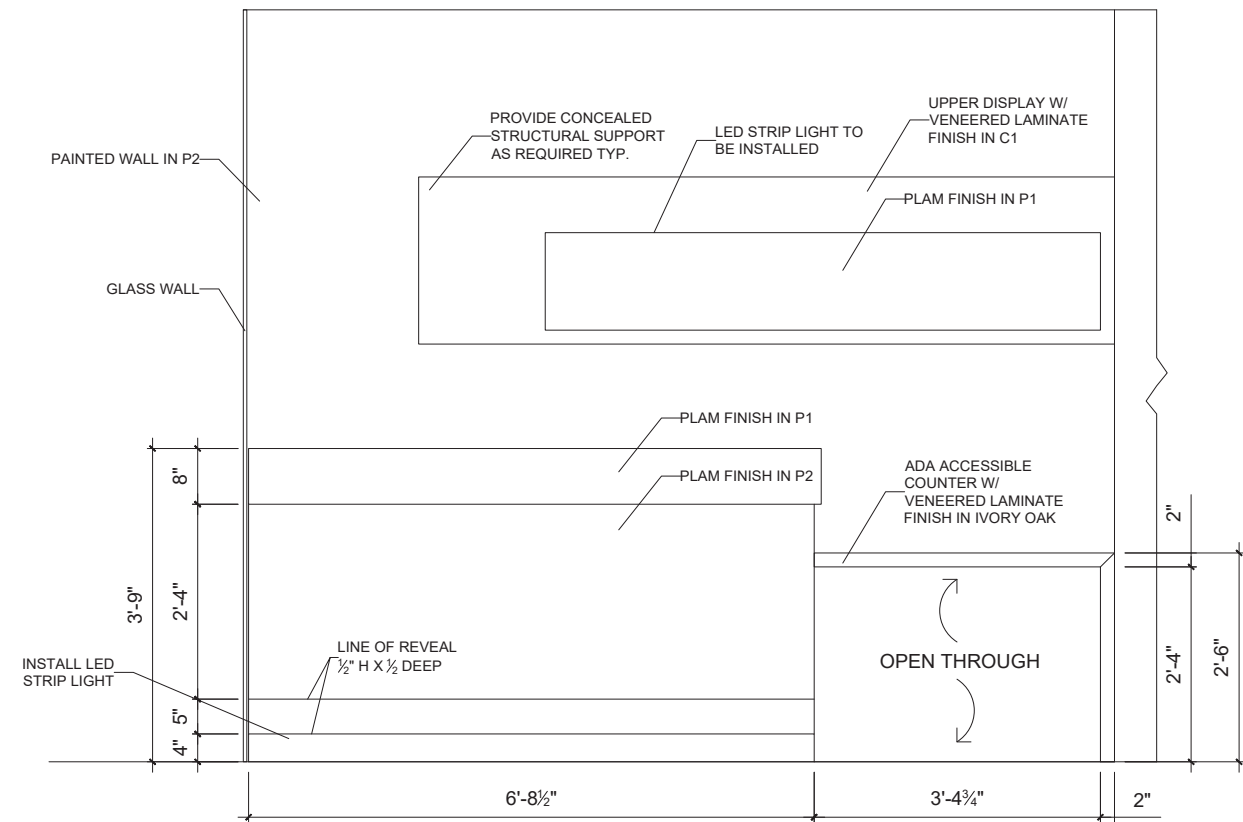
# RECEPTION DESK ELEVATION



02 RECEPTION DESK WEST ELEVATION  
A-600 SCALE: 1/2" = 1' - 0"



03 RECEPTION DESK PLAN  
A-600 SCALE: 1/2" = 1' - 0"



01 RECEPTION DESK NORTH ELEVATION  
A-600 SCALE: 1/2" = 1' - 0"

## MILLWORK FINISHES

PRODUCT:	PAINT
MFG:	BENJAMIN MOORE
P1 NAME/CODE:	OC-57
COLOUR:	WHITE HERON
FINISH:	MATTE
PRODUCT:	PAINT
MFG:	BENJAMIN MOORE
P2 NAME/CODE:	2059-10
COLOUR:	MARINE BLUE
FINISH:	SATIN
PRODUCT:	VENEERED PANELS
MFG:	SHINNOKI
C1 NAME/CODE:	IVORY OAK
TYPE:	SINGLE-SIDED LAMINATE

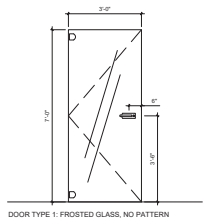
## MILLWORK NOTES:

1. ALL MILLWORK TO BE BUILT TO PREMIUM AWMAR STANDARD
2. MILLWORKER TO INSTALL CONCEALED SUPPORT WHERE REQUIRED FOR STRUCTURAL INTEGRITY.
3. MILLWORKER TO REFER TO ELECTRIC PLAN AND WORK WITH ELECTRICIAN TO COORDINATE SUPPLY AND HOOKUP OF LED LIGHT.

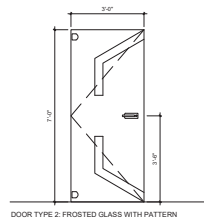
# OTHER SCHEDULES

## DOOR SCHEDULE

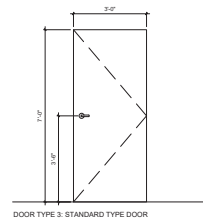
OPEN ID	ROOM NAME	DOOR					FRAME			HARDWARE SET	
		TYPE	W x H x THICKNESS	MTL	FINISH	GLASS	TYPE	MTL	FINISH	SET NO.	NOTES
D100	ENTRY/RETAIL	--	--	--	--	--	--	--	--	--	EXISTING
D101	MANAGER'S OFFICE	1	36" x 84" x 12MM	GLASS	FROSTED	Y	--	--	H2, H6	--	
D102	CONSULTATION OFFICE 1	2	36" x 84" x 12MM	GLASS	FROSTED	Y	--	--	H3, H6	--	
D103	DOCTOR'S OFFICE 1	1	36" x 84" x 12MM	GLASS	FROSTED	Y	--	--	H2, H6	--	
D104	EXAM ROOM A	2	36" x 84" x 12MM	GLASS	FROSTED	Y	--	--	H1, H6	--	
D105	OUTPATIENT SURGERY ROOM	3	36" x 84" x 1 1/2"	WD	CL	--	1	WD	CL	H4, H6	--
D106	EXAM ROOM B	2	36" x 84" x 12MM	GLASS	FROSTED	Y	--	--	H1, H6	--	
D107	EXAM ROOM C	2	36" x 84" x 12MM	GLASS	FROSTED	Y	--	--	H1, H6	--	
D108	CONSULTATION ROOM 2	2	36" x 84" x 12MM	GLASS	FROSTED	Y	--	--	H3, H6	--	
D109	EXAM ROOM D	2	36" x 84" x 12MM	GLASS	FROSTED	Y	--	--	H1, H6	--	
D110	DOCTOR'S OFFICE 2	1	36" x 84" x 12MM	GLASS	FROSTED	Y	--	--	H2, H6	--	
D111	STORAGE	3	36" x 84" x 1 1/2"	WD	CL	--	1	WD	CL	H4, H5, H6	--
D112	STAFF BREAK ROOM	3	36" x 84" x 12MM	WD	CL	--	1	WD	CL	H4, H6	--
D113	LAB	2	36" x 84" x 12MM	GLASS	FROSTED	Y	--	--	H2, H6	--	
D114	DELIVERY/ADJUSTMENT ROOM	1	36" x 84" x 12MM	GLASS	FROSTED	Y	--	--	H2, H6	--	
D115	WASHROOM 1	3	36" x 84" x 1 1/2"	WD	CL	--	1	WD	CL	H4, H6	--
D116	WASHROOM 2	3	36" x 84" x 1 1/2"	WD	CL	--	1	WD	CL	H4, H6	--
D117	EXIT DOOR	3	36" x 84" x 1 1/2"	WD	CL	--	1	WD	CL	H4, H5, H6	--



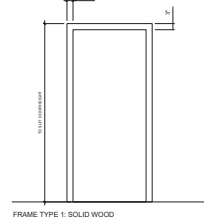
DOOR TYPE 1: FROSTED GLASS, NO PATTERN



DOOR TYPE 2: FROSTED GLASS WITH PATTERN



DOOR TYPE 3: STANDARD TYPE DOOR



FRAME TYPE 1: SOLID WOOD

2 FRAME TYPES  
A-900 SCALE: 3/8" = 1'-0"

3 FRAME TYPES  
A-900 SCALE: 3/8" = 1'-0"

## PLUMBING SCHEDULE

FIXTURES / FITTINGS					
SYMBOL	TYPE	MANUFACTURER	PRODUCT NUMBER	SIZE	MATERIAL/FINISH/COLOR
PL01	BATHROOM U/M SINK	KOHLER	K-R2882-0	19 1/2" X 15 1/2" X 6 1/2"	VITREOUS CHINA, WHITE
PL02	BATHROOM FAUCET	KOHLER	K-73054-7-CP	7 1/8" X 2" X 10 1/8"	POLISHED CHROME
PL03	WATER CLOSET	KOHLER	K-3589-0	28 1/2" X 17 1/2" X 30 1/2"	WHITE
PL04	ROUND SINK	KOHLER	K-3339-SS	13 1/2" X 13 1/2" X 5 1/2"	STAINLESS STEEL
PL05	FAUCET	KOHLER	K-942-4-CP	3 1/2" X 8" X 7 1/2"	POLISHED CHROME
PL06	KITCHEN SINK	KOHLER	K-3171-SS	31 1/2" X 18" X 9 1/8"	STAINLESS STEEL
PL07	KITCHEN FAUCET	KOHLER	K-942-4-CP	3 1/2" X 8" X 7 1/2"	POLISHED CHROME

## HARDWARE SCHEDULE

H1	GLASS DOOR FITTING SET MANUFACTURER: CODE/MODEL: MATERIAL & FINISH:	HAFELE 981.49.213 ALUMINUM COVERS, SILVER COLOURED ANODIZED
	STRIKE PATCH FITTING SET MANUFACTURER: CODE/MODEL: MATERIAL & FINISH:	HAFELE 981.49.420 ALUMINUM COVERS, SILVER COLOURED ANODIZED
H2	GLASS DOOR FITTING SET W/ LOCK MANUFACTURER: CODE/MODEL: MATERIAL & FINISH:	HAFELE 981.49.504 ALUMINUM COVERS, SILVER COLOURED ANODIZED
	LEVER HANDLE PAIR MANUFACTURER: CODE/MODEL: MATERIAL & FINISH:	HAFELE LDH 2171 902.22.930 STAINLESS STEEL, MATT
	STRIKE PATCH FITTING SET MANUFACTURER: CODE/MODEL: MATERIAL & FINISH:	HAFELE 981.49.420 ALUMINUM COVERS, SILVER COLOURED ANODIZED
	GLASS DOOR HINGE MANUFACTURER: CODE/MODEL: MATERIAL & FINISH:	HAFELE 981.49.006 ALUMINUM, SILVER COLOURED ANODIZED
H3	DOOR HANDLE MANUFACTURER: CODE/MODEL: MATERIAL & FINISH:	HAFELE 903.00.704 STAINLESS STEEL, MATTE
	PULL HANDLES MOUNTING SET MANUFACTURER: CODE/MODEL: FINISH:	HAFELE 909.20.010/BS-701/B N/A
	GLASS DOOR HINGE MANUFACTURER: CODE/MODEL: FINISH:	HAFELE 981.49.007 STAINLESS STEEL, MATTE
H4	PRIVACY LOCK SET MANUFACTURER: CODE/MODEL: MATERIAL & FINISH:	TAYMOR 32-V1853 SOLID BRASS
	DOOR HINGE MANUFACTURER: CODE/MODEL: MATERIAL & FINISH:	HAFELE 927.91.636 ZINC ALLOY, MATTE NICKEL
H5	DOOR CLOSER MANUFACTURER: CODE: MATERIAL & FINISH:	TAYMOR 13-552APAL ALUMINUM ALLOY
H6	FLOOR STOP MANUFACTURER: CODE: FINISH:	HAFELE 937.94.037 SATIN CHROME

## LIGHTING FIXTURE SCHEDULE

TYPE	MANUFACTURER	PRODUCT NO.	SIZE/DIMENSIONS W X L X H
RECESSED LIGHT FIXTURE	PHILIPS	871869607042099	6" DIAMETER
LED WALL SCNCE	LIGHTING WAREHOUSE	667218	3.5" X 4" X 13.5"
CEILING MOUNTED TRACK LIGHTING	EATON	LV303SL	2 1/8" X 2" X 3 3/4"
2' T-BAR LED CROSS TEE LIGHT	ARMSTRONG	K-7346-S	9/16" X 24"
4' T-BAR LED CROSS TEE LIGHT	ARMSTRONG	K-15464-BS	9/16" X 48"
2' X 4' RECESSED LED LIGHT	PHILIPS	871869917467500	24" X 48" X 2"
1' X 4' RECESSED LED LIGHT	PHILIPS	STR(F/G)14-2-T5H O-ASM	12" X 48" X 2"
LED STRIP LIGHTING	PHILIPS	FORTIMO	24"

## PLUMBING SCHEDULE

ACCESSORIES			
TYPE	MANUFACTURER	PRODUCT NO.	MATERIAL/FINISH
ADJUSTABLE P-TRAP	KOHLER	K-8998-CP	POLISHED CHROME
ANGLE SUPPLY	KOHLER	K-7637-CP	POLISHED CHROME
LEFT-HAND TRIP LEVER	KOHLER	K-9466-L-SN	VIBRANT POLISHED NICKEL
SINK DRAIN & STRAINER	KOHLER	K-8801-CP	POLISHED CHROME
SOAP DISPENSER	KOHLER	K-7346-S	POLISHED STAINLESS
GRAB BAR 36"	KOHLER	K-15464-BS	BRUSHED STAINLESS
GRAB BAR 18"	KOHLER	K-14561-S	BRUSHED STAINLESS
HAND DRYER	ULINE	H-887	STAINLESS STEEL
TOILET PAPER DISPENSER	ULINE	H-5113	STAINLESS STEEL
WALL MOUNT PAPER TOWEL DISPENSER	ULINE	H-2275	BRUSHED STEEL
SANITARY NAPKIN RECEPTACLE	ULINE	H-3454	STAINLESS STEEL
TOILET SEAT COVERS AND RECEPTABLES	ULINE	H-1592	CHROME DISPENSER



# BEA VALLES

778 908 6869  
vallesbea@gmail.com