

SENIOR PROJECT

ELEMENTARY SCHOOL REDESIGN





RIDGEVIEW ELEMENTARY SCHOOL

The redesign of Ridgeview Elementary School will include the creation of a **shared community space** with break out learning centres to better serve the students.

The intent of the design is to create a **healthy** and productive space that will promote **community, creativity and comfort** for the students and staff. The design will bring in **natural light** and utilize **open spaces** to minimize entry and exit points and create a community feel.

Finally, furnishings will be soft and colorful to promote **creativity** and a fun, **interactive environment** for the students.

DESIGN CONCEPT

The Archimedean Solids - While in design, patterns are generally applied as decorative outer skin. The particular design of the Archimedean Solids explores the relationship between spatial expression and function through creating a patterned layout that optimizes both space and objective. The Archimedean Solids are a direct link to the constellations and how they are embroidered in space. The use of the pentagon in design uses the gold ratio of space and function.



DESIGN PRECEDANT - PISTORIUS SCHOOL



Location

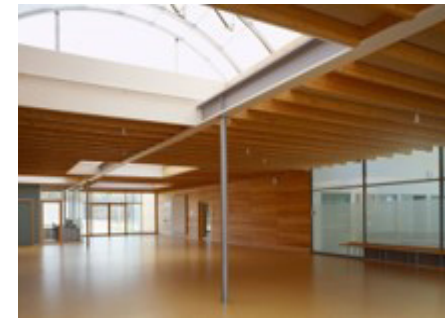
- Herbrechtingen, Germany

Design

- 2001-2004

Reasons for choice of precedent:

- Natural Light
- Large Windows
- Natural colour palette
- Clean lines
- Simple design aesthetic



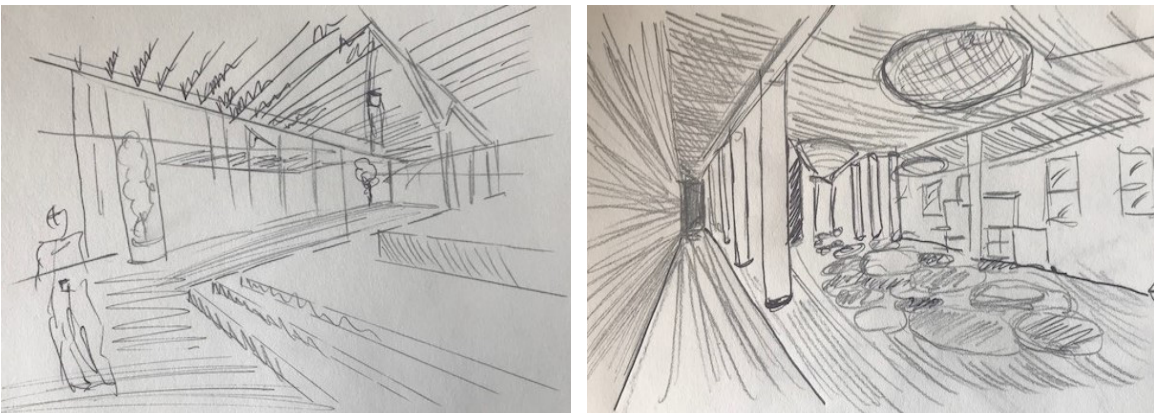
BEHNISCH & PARTNER

We, as architects, are driven by the belief that our surroundings directly influence the quality of our lives, whether in the workplace, at home or in the public spaces in between. This emphasis on the social dimension is fundamental to our design philosophy, which takes as its starting point the acknowledgement that architecture is generated by the needs of people, needs that may be spiritual as well as being material.

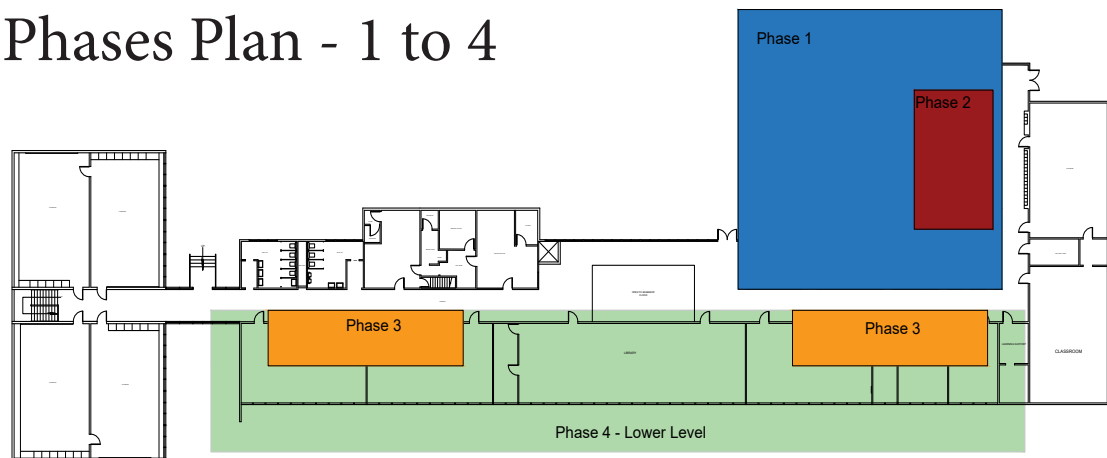
INITIAL DESIGN PLAN & COLOUR SCHEME

INITIAL DESIGN PHASE

After our initial visit at Ridgeview with the Principle of the school, the first phase of the Ridgeview renovation includes the gymnasium (stage), storage, change rooms, kitchen and multi-purpose space. As the school is in desperate need of appropriate storage for their extra gym, science and school equipment the space needs an efficient way to stow away equipment that is easy for staff and students to access. Once these spaces are organized the main focus of this phase's redesign in the large breakout space for the whole school.

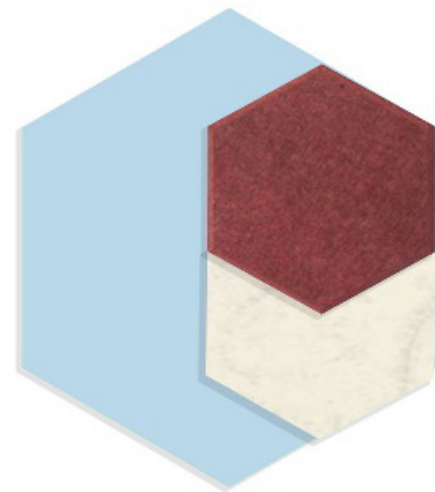


Phases Plan - 1 to 4



DESIGN PARAMETERS

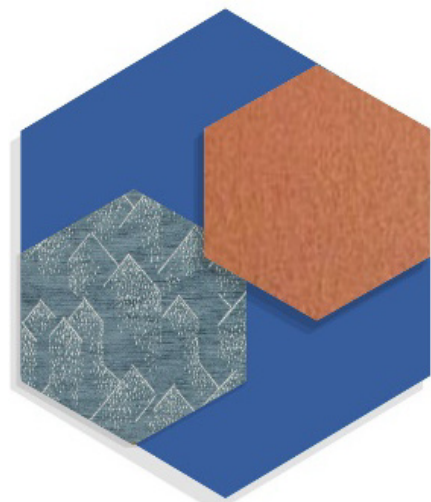
Ridgeview Elementary is redesigning their gym and storage areas. The redesign will include the creation of a shared community space with break out learning centres to better serve the students. My design reflects these juxtapositions and emphasizes through: structure-content, urban-nature and enclosure-openness. The design will bring in natural light and utilize open spaces to minimize entry and exit points and create a community feel. It will capitalize on the current layout's defined borders for easily securable areas. Finally, furnishings will be soft and colourful to promote creativity and fun, interactive environments for the staff and students.



Breakout Space
Materials



Interactive Garden
Materials



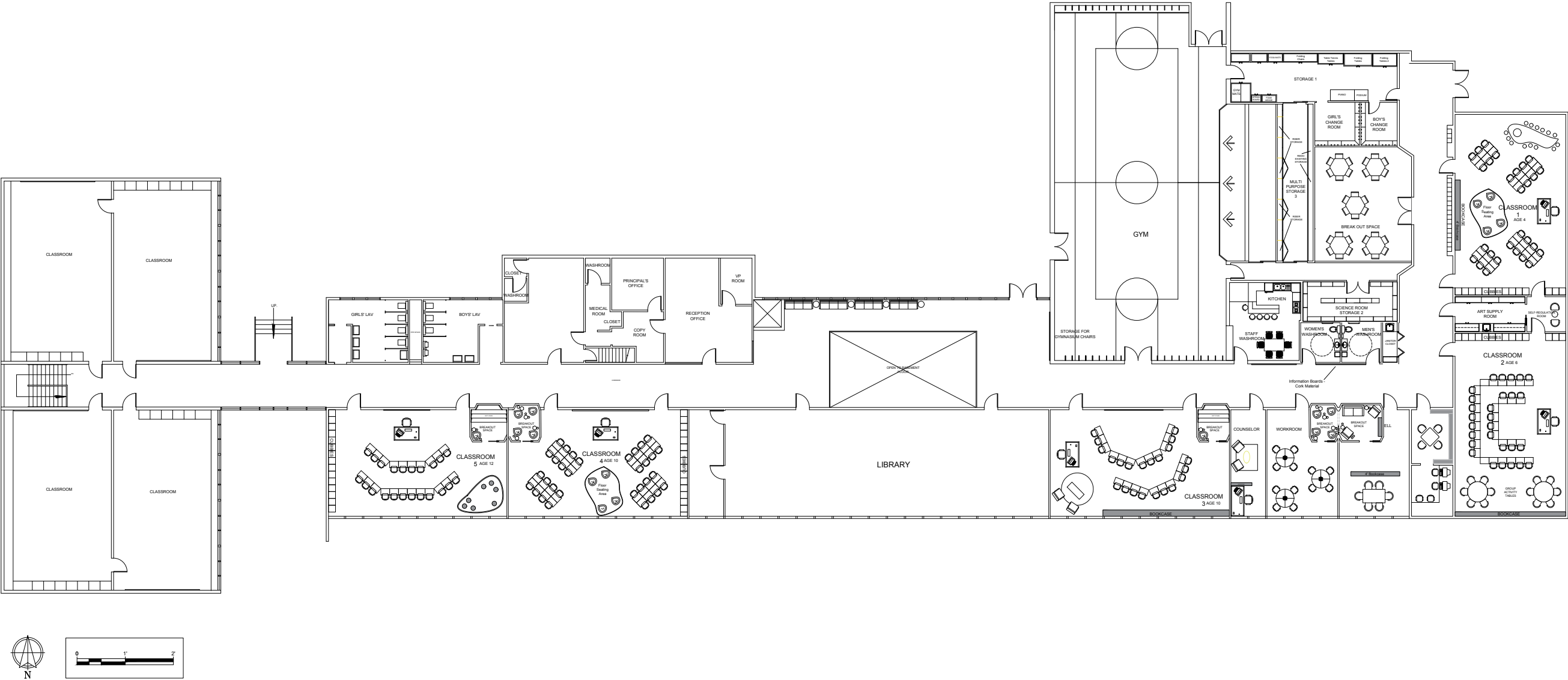
Classroom Breakout Space
Materials



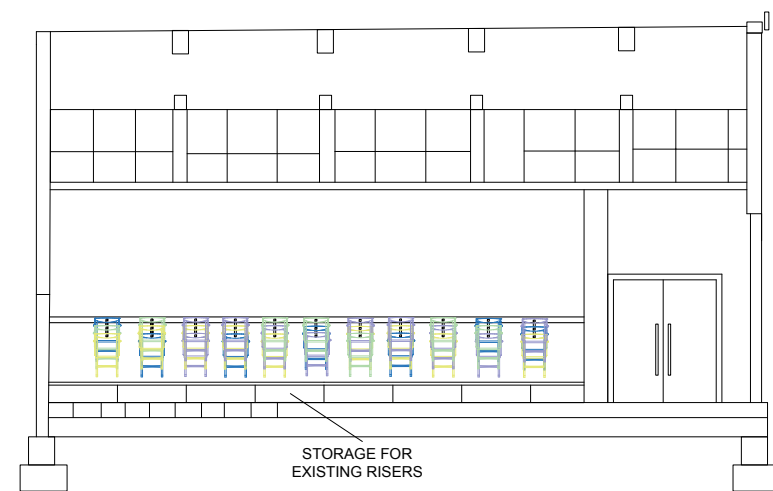
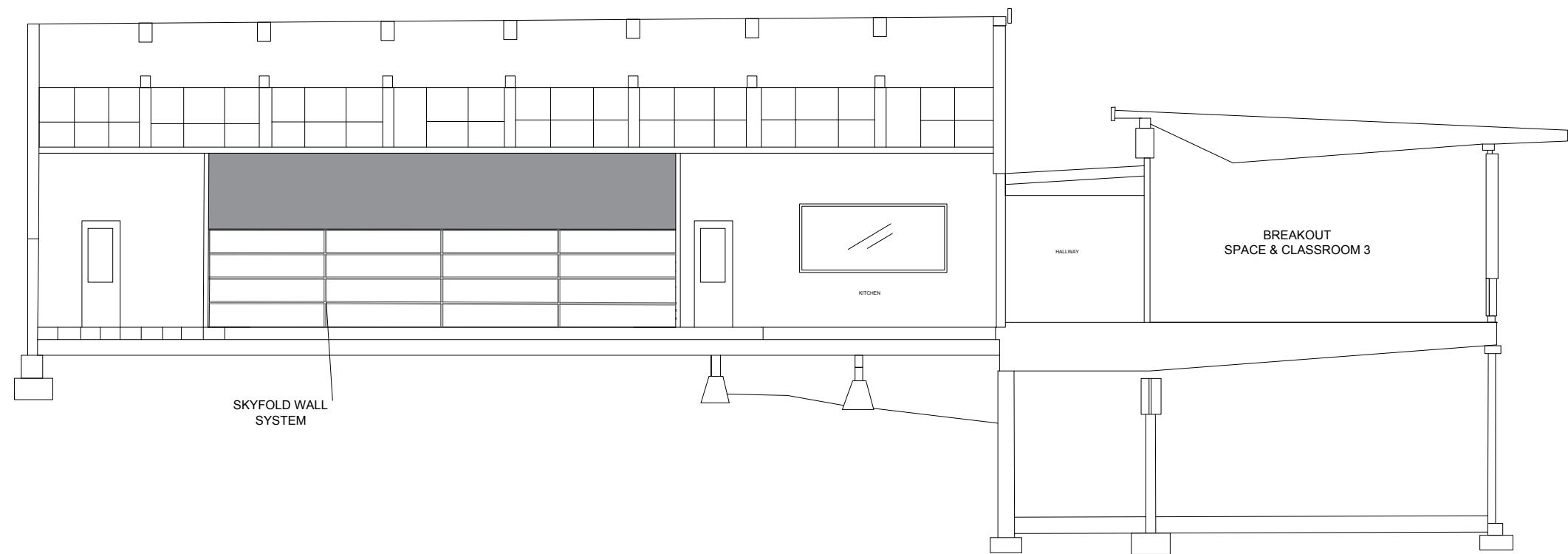
COLOUR SCHEME

This colour palette is an alternative interpretation of a natural colour scheme. The school is located between the **sea** and the **mountains** in West Vancouver, with large windows viewing the ocean. I wanted to incorporate this aspect into my designs as nature is an **important influence on mood and mindfulness.**

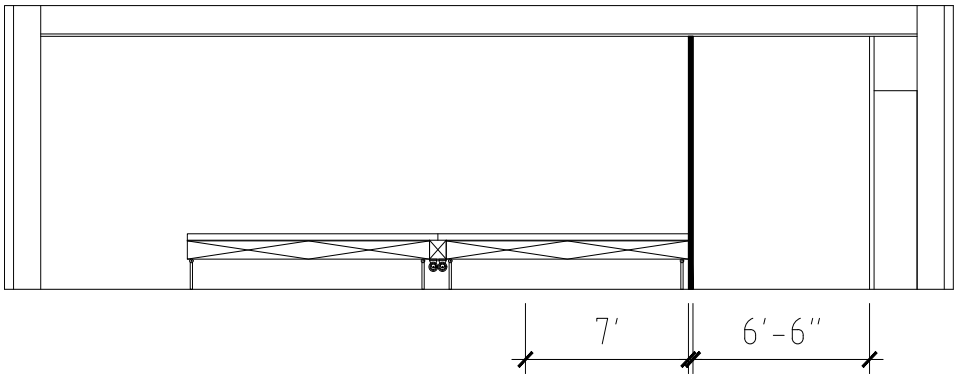
FLOOR PLAN



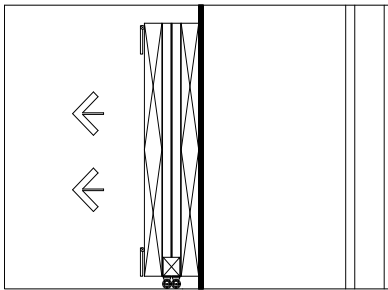
ELEVATIONS-GYMNASIUM



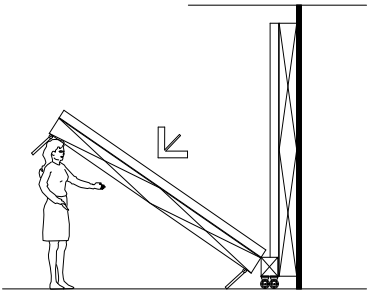
ELEVATION-STAGE



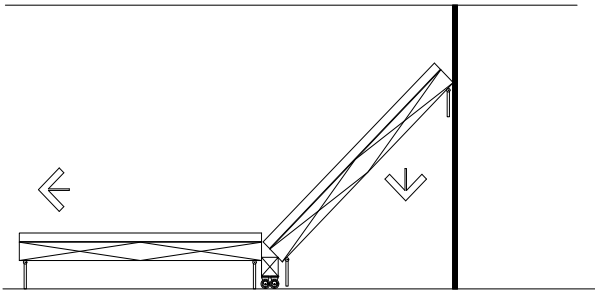
The electrically powered winch mechanism effortlessly moves the stage into the stored position in less than a minute.



DIRECTION

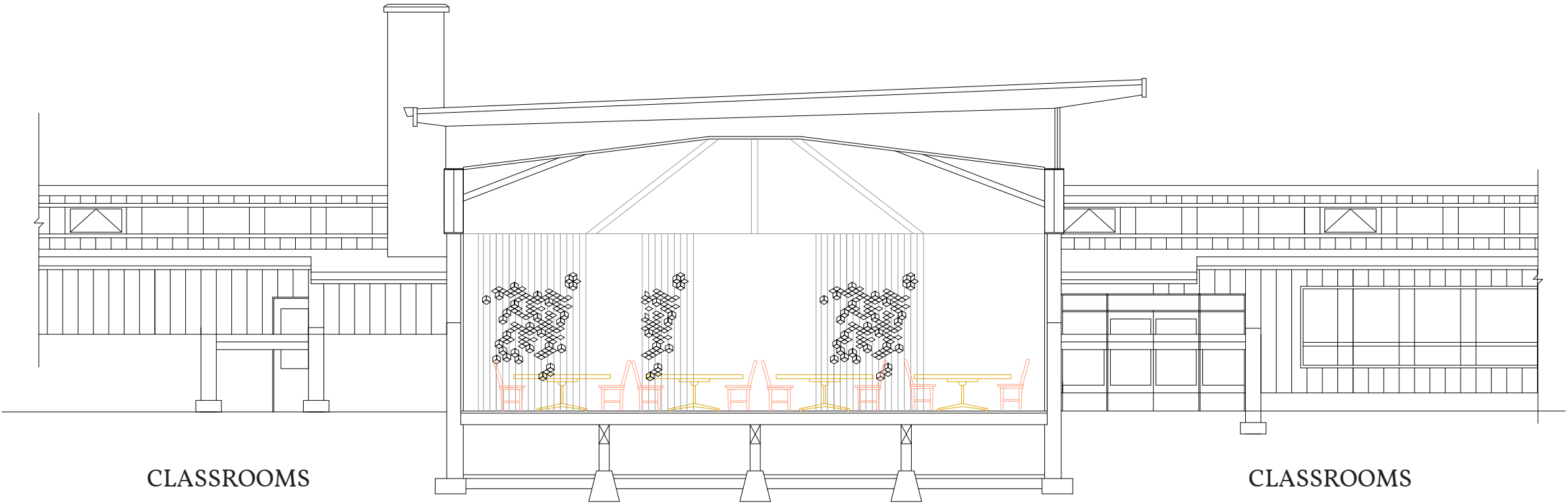


RAISE OR LOWER



EXPANDABLE

ELEVATION-MULTI PURPOSE BREAKOUT SPACE



PHASE ONE - GYMNASIUM AND STORAGE SPACE



PHASE TWO - UNIVERSAL BREAKOUT SPACE



PHASE THREE - CLASSROOM & CLASSROOM BREAKOUTSPACES



PHASE FOUR - INTERACTIVE GARDEN

