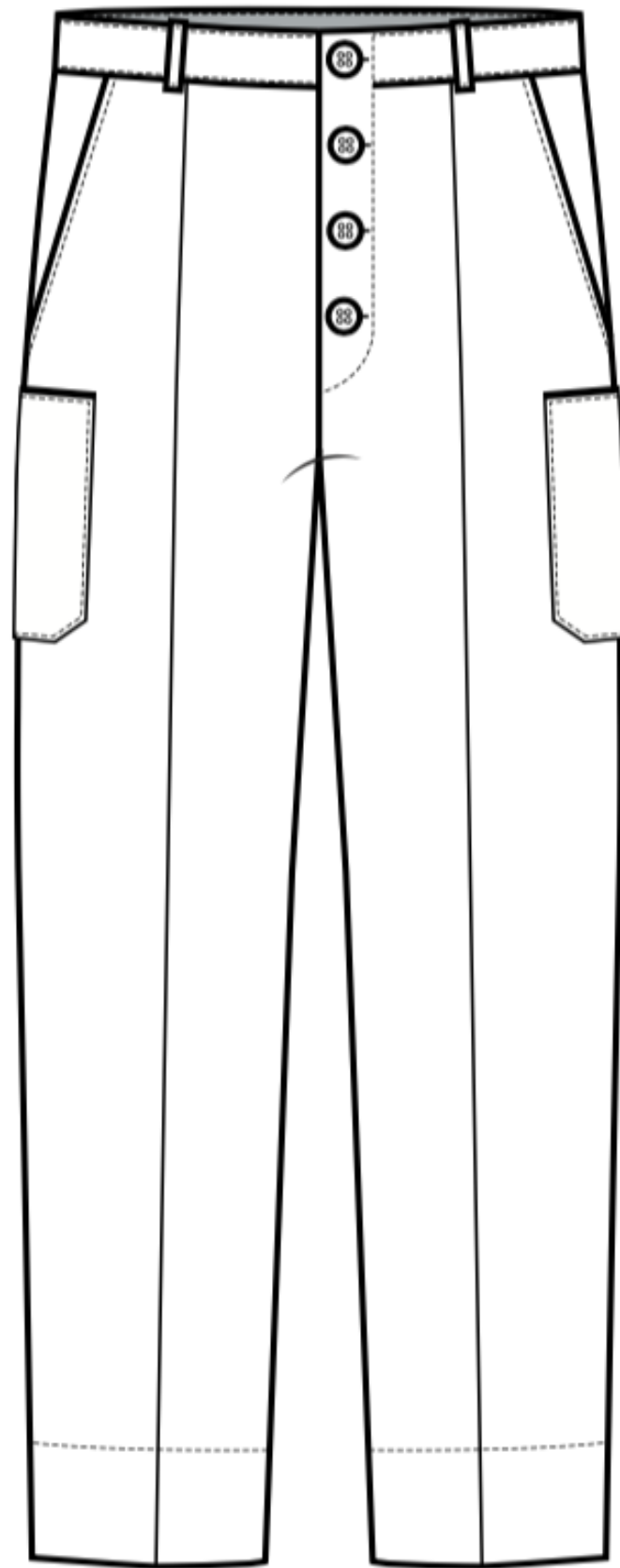


Group work

Melvina & Putri

Spotlight the small details, stitches, trims and give explanation. Create simple tech draw from selected garment.

Garment 1



Front Opening : Buttons

Four detachable buttons on the front as opening system

Belt Loop

Two belt loops on the front pants

Side Pocket

Pockets on the side area of the pants

Patch Pocket

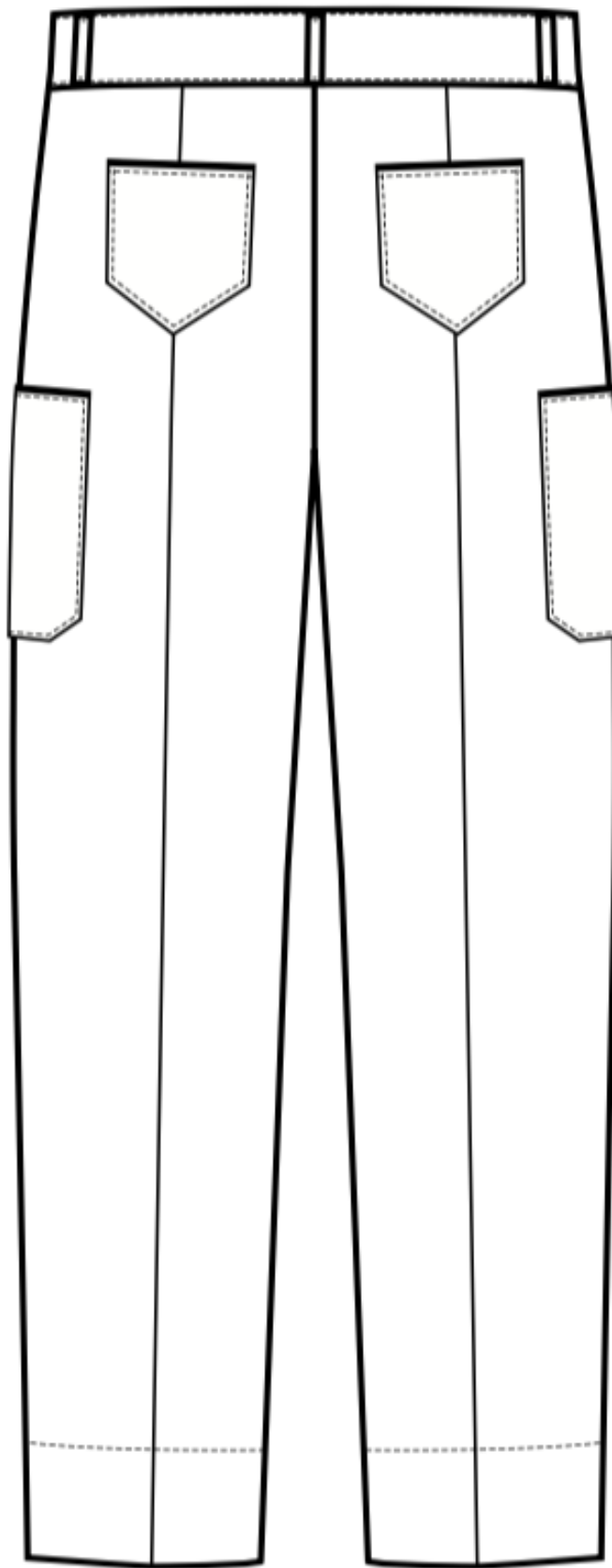
Patch pockets were sewn to the mid-side area of the pants

Princess Line

Princess line seam for nice fit and shaping

Top Stitch

Top stitch on the belt, belt loop, side pockets, patch pockets, and hem area



Belt Loop

Three belt loops on the back pants

Back Pocket

Pockets on the back area of the pants

Patch Pocket

Patch pockets were sewn to the mid-side area of the pants

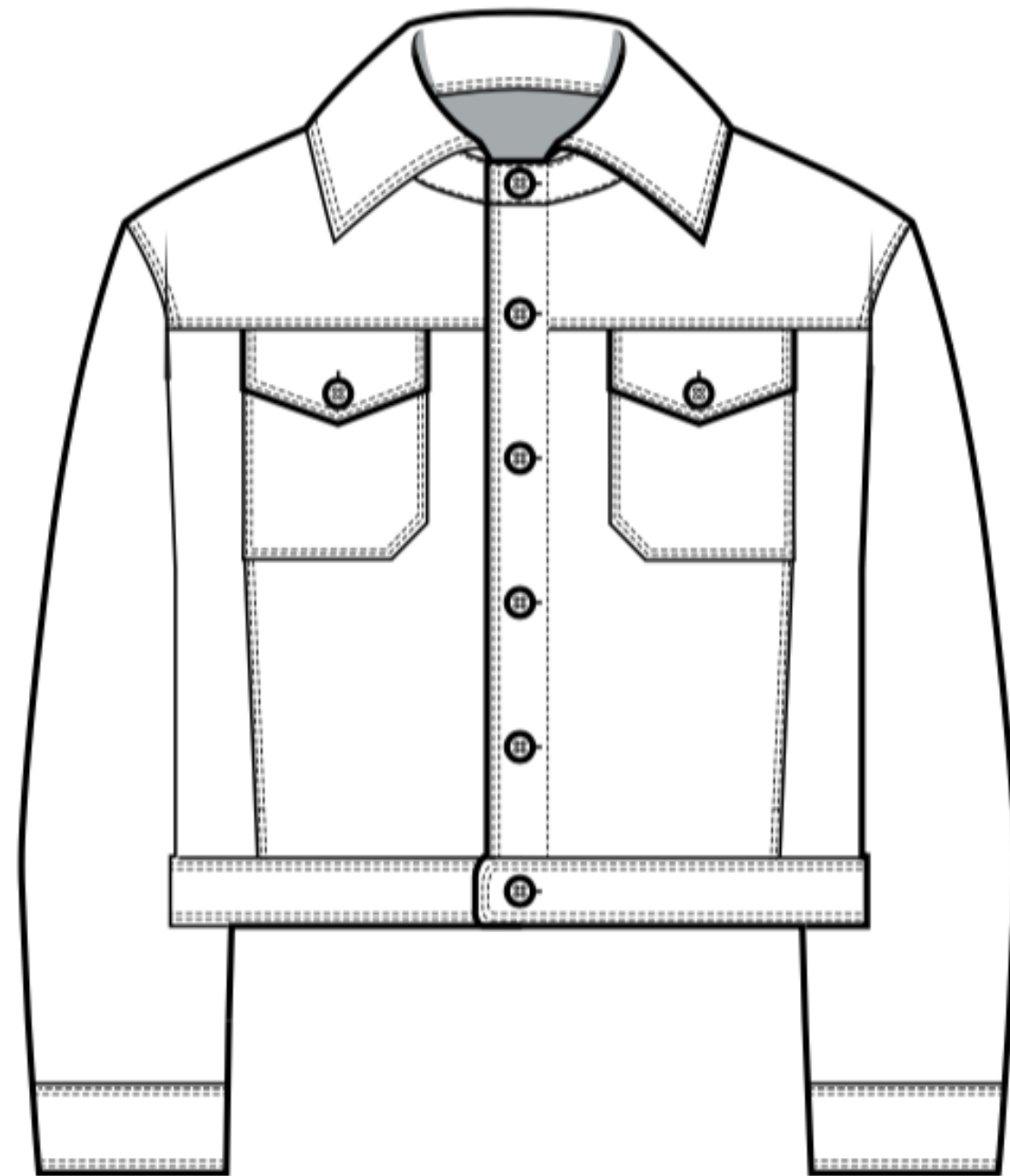
Princess Line

Princess line seam for nice fit and shaping

Top Stitch

Top stitch on the belt, belt loop, side pockets, patch pockets, and hem area

Garment 2



Front Opening : Buttons

Six detachable buttons on the front button placket as opening system

Classic Shirt Collar

Shirt collar design, one button on the stand collar area

Classic Jean Jacket Pocket

Patch pocket + flaps and buttons to fasten the flap

Front Yoke

Front yoke separates the collar, sleeve and bust-down area

Princess Line

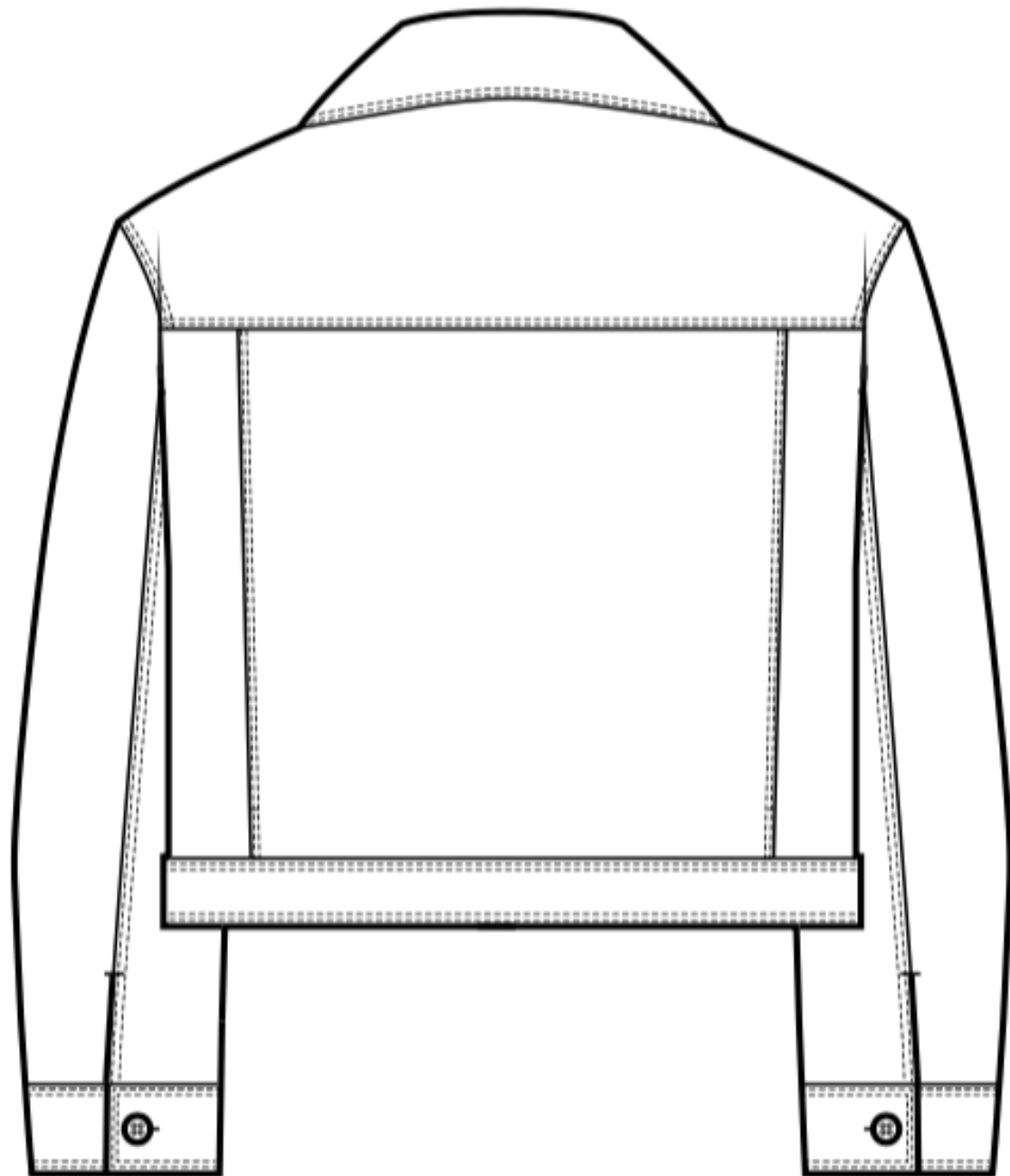
Princess line seam on the front of the jacket

Sleeve and Hem Cuff

Located on the end of the sleeve and hem of the jacket

Top Stitch

Top stitch on the collar, yoke, button placket, pockets, princess line, hem cuff and sleeve cuff area



Classic Shirt Collar

Shirt collar design, one button on the stand collar area

Back Yoke

Front yoke separates the collar, sleeve and bust-down area

Princess Line

Princess line seam on the front of the jacket

Sleeve and Hem Cuff

Located on the end of the sleeve and hem of the jacket

Sleeve Placket

Sleeve placket on the back side of the sleeves, detachable to enable the sleeves to open

Top Stitch

Top stitch on the collar, yoke, button placket, pockets, princess line, hem cuff and sleeve cuff area

