

PORTFOLIO

Fashion Designer

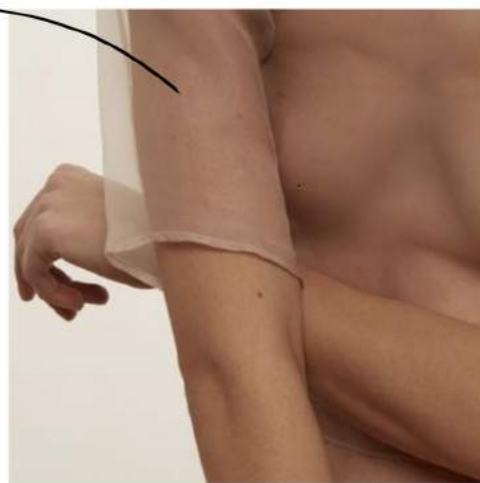
Mariona Seira

mmariona24@gmail.com

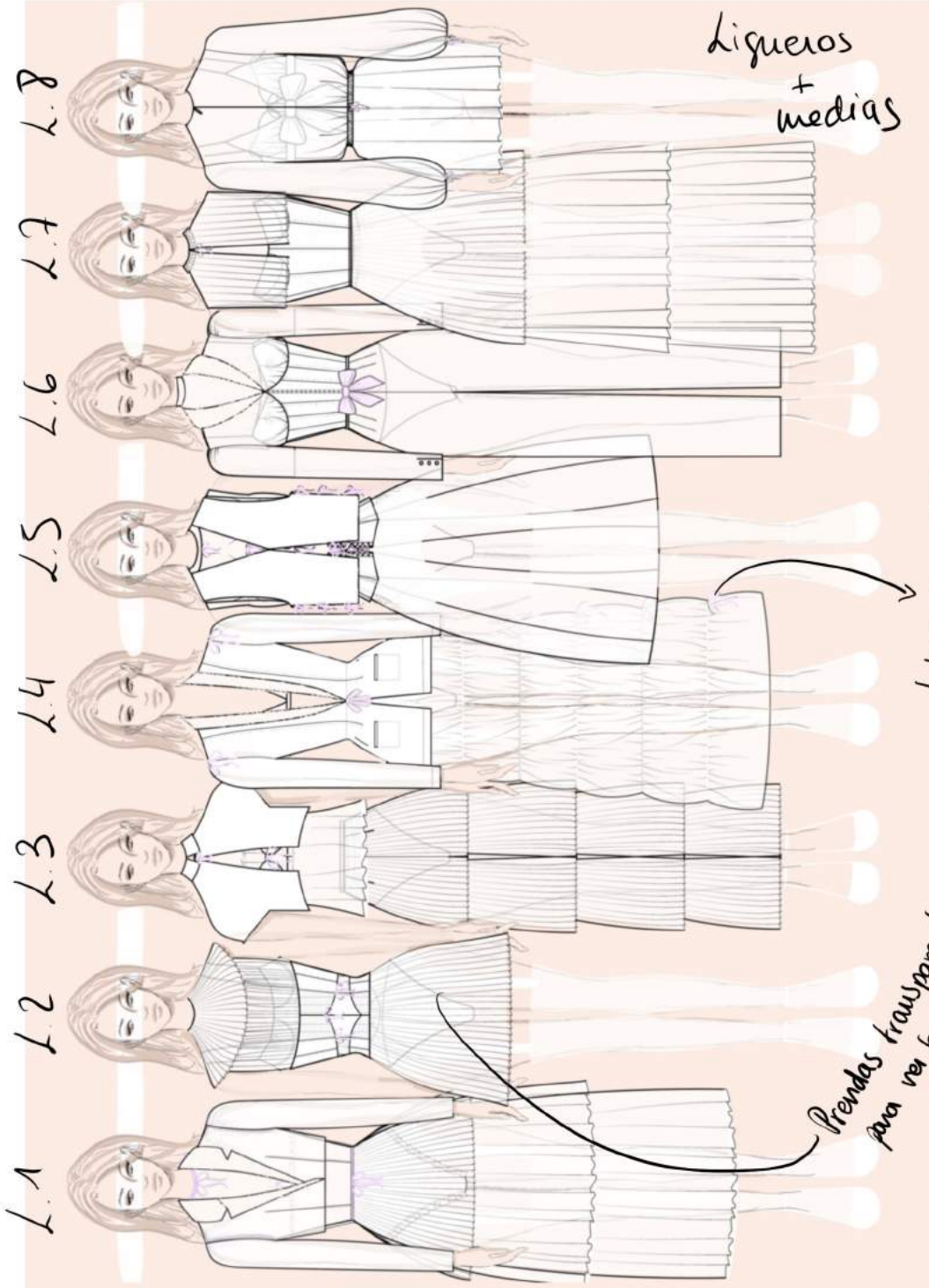
INDEX

1. Renaissance Collection - TFG
- Collection
- Lingerie Collection *
2. Interconnected Disconnection
Editorial x LadyGunn Magazine
3. Collection for Aniela Parys *
4. Jellyfish - Lingerie Collection
5. Collection for Agent Provocateur
6. Shade of torment -
men collection

Renaissance Collection



Sensualidad



Prendas clave - sheet

LOOK 1	LOOK 2	LOOK 3	LOOK 4
Ref: AMB201 T0860		Ref: PNT01 P978	Ref: AMB202 T0861
Ref: VST01 T192 T191	Ref: VST05 T193 T194	Ref: BLS01 T0804	Ref: AMB203 T0847
Ref: BDY01 T0804	Ref: SITD08 Ref: BRG08 T0804 T197 T0804	Ref: PNT04 Ref: BRG10 T192 T191 T197 T0804	Ref: SITD01 Ref: BRG01 T197 T198 T197 T198
Ref: PNT02 P670	Ref: AMB204 T0865	Ref: VST06 T192 T191	Ref: AMB02 T0803
Ref: BLS01 T0804	Ref: CRS06 T193 T191	Ref: CRS07 T193 T191	Ref: VST04 T191
Ref: BDY02 T197	Ref: PNT104 T0863	Ref: BRG10 T193 T191	Ref: SITD03 Ref: BRG03 T197 T0804 T197 T0804



look de organza

Rento muy fino



* gaza seda 100%



* tul plisado



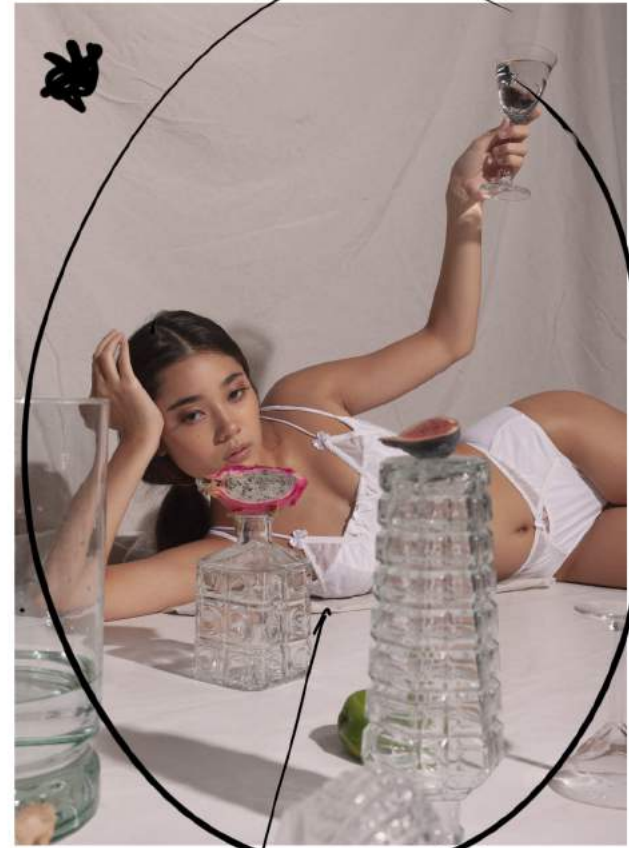
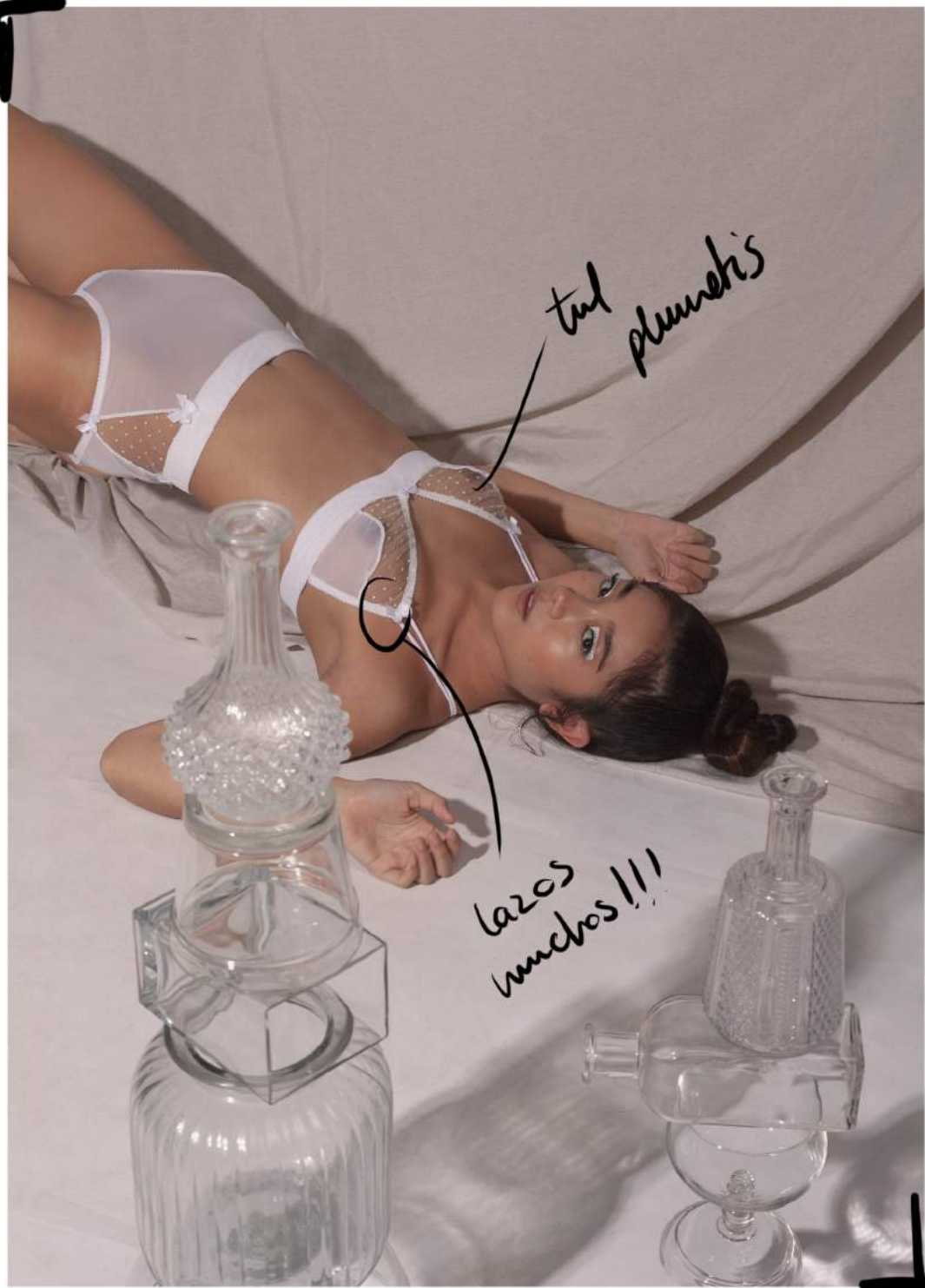
estructura de corset



detalles de lazos



lazos grandes

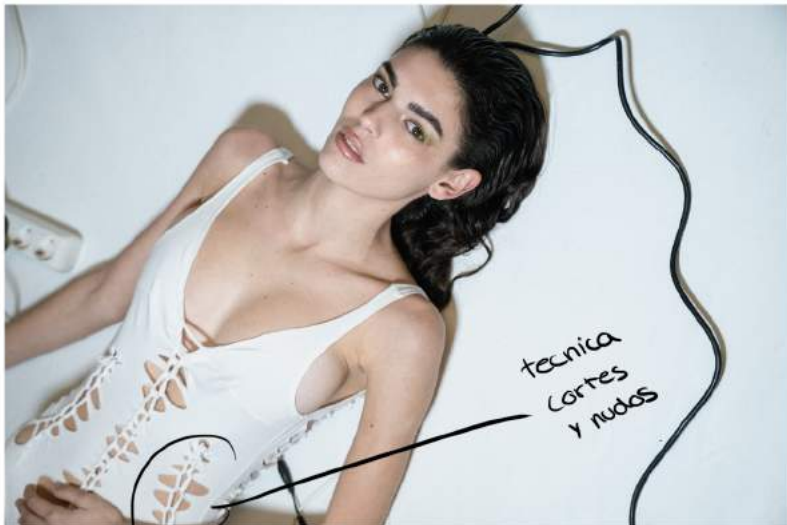


Conjunto lenis
top + pantalón

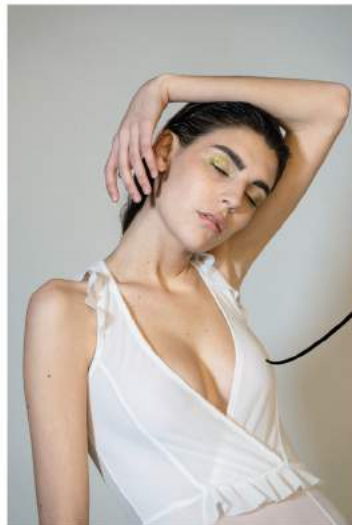


Interconnected Disconnection

- Editorial x LadyGunn Mag
- Pieces made by me.



técnica
cortes
y nudos

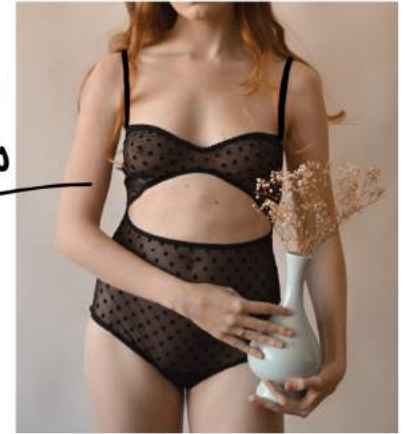


Body elástico
con volantes
en hombros y
cintura





Reinterpreting
their best
seller -> Body



Hole +
bow

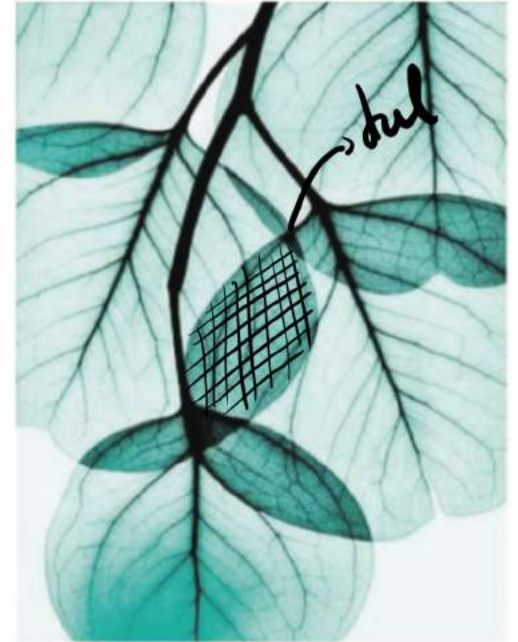


↳ Capsule Collection for
Aniela Parys

- Design, pattern & made by me.
- transform basics.



--- Colección Jelly fish ---

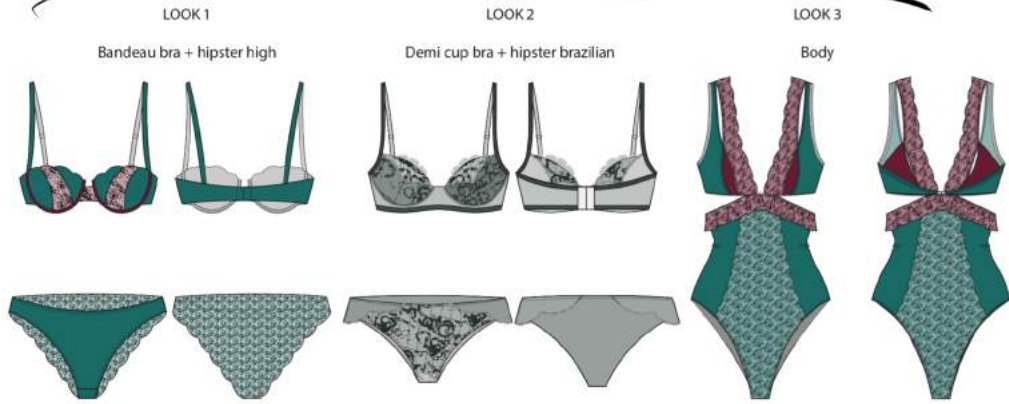


Paleta colores marinos

Idea para
Diseño de
tejido entaje



mini - planning



Quality Sheet

MAIN FABRICS

- QUALITY 1 Tul ART:759283	■	
- QUALITY 2 Encaje ART:987428	■ ■ ■	
- QUALITY 3 Gasa ART:786784	■ ■	
- QUALITY 4 Microfibra ART:759223	■ ■ ■	
- QUALITY 5 Satén ART:985678	■ ■ ■	
- QUALITY 6 Algodón ART:782634	■ ■	

BASIC QUALITIES

- QUALITY 1: Tirante 15 mm	■	
- QUALITY 2: Aro tirante	■	
- QUALITY 3: Regulador tirante	■	
- QUALITY 4: Aro copa	■	
- QUALITY 5: Cierre corchetes	■	
- QUALITY 6: Goma elastica	■	
- QUALITY 7: Cierre del corse	■	
- QUALITY 8: Varilla	■	
- QUALITY 9: Remaches	■	
- QUALITY 10: Cinta	■	
- QUALITY 11: Vivo elastico	■	
- QUALITY 12: Ondulina	■	
- QUALITY 13: Foam	■	

- ficha de tejidos y fornituras

fichas técnicas de lenteaia

DEMI CUP BRA

Sujetador demi cup con aro y relleno. Copa con aplicación de encaje

Collection: JELLYFISH

Date: 10-04-2019

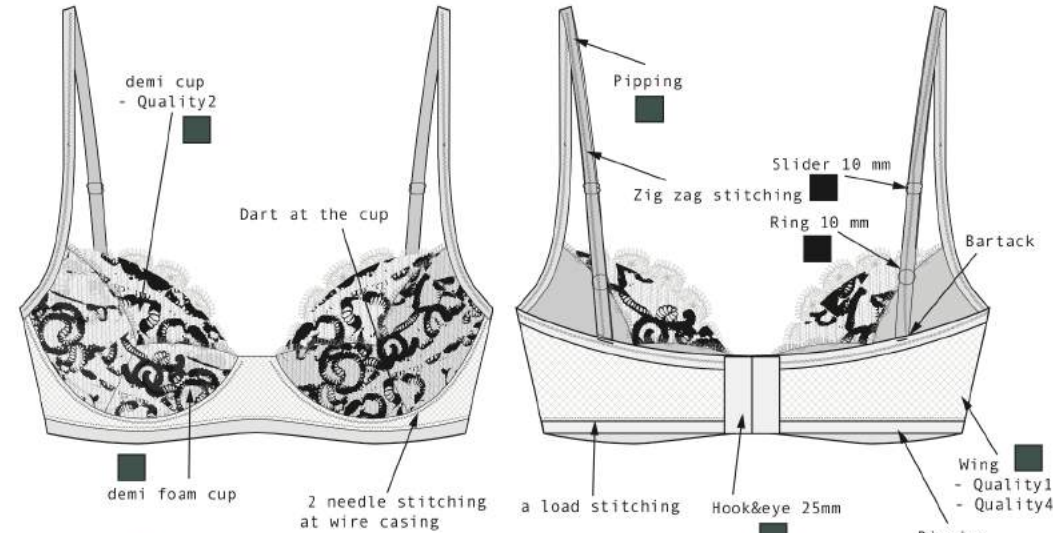
Garment: bra02

Designer: Mariona Seira

Quality 1: tul

Quality 2: Encaje

Quality 4: microfibra



Threated to tone

BODY

Sujetador bandeaucon aro y relleno. Copa con aplicación de encaje

Collection: JELLYFISH

Date: 10-04-2019

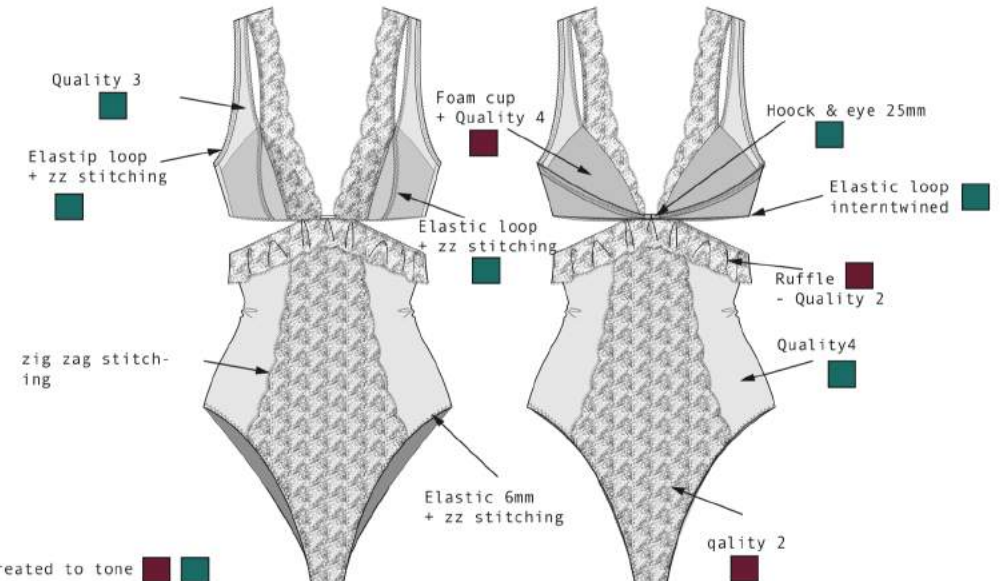
Garment: bra01

Designer: Mariona Seira

Quality 2: Encaje

Quality 3: gasa

Quality 4: microfibra

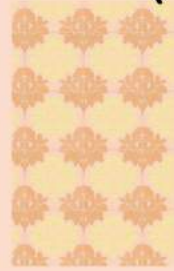


Threated to tone

Impermanent Materials



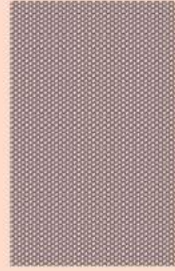
* Diseño de tejido encaje floral



Simple Lace
90gr/m2
80% PES 20% EA



Mixed Lace
90gr/m2
80% PES 20% EA



Elastic Tulle
90gr/m2
80% PES 20% EA



Elastic Satin
90gr/m2
80% PES 20% EA

Coleccion de lenceria para Agent Provocateur

* Concepto -> fragilidad floral



Grounded natural hues



* Ciudad consciente

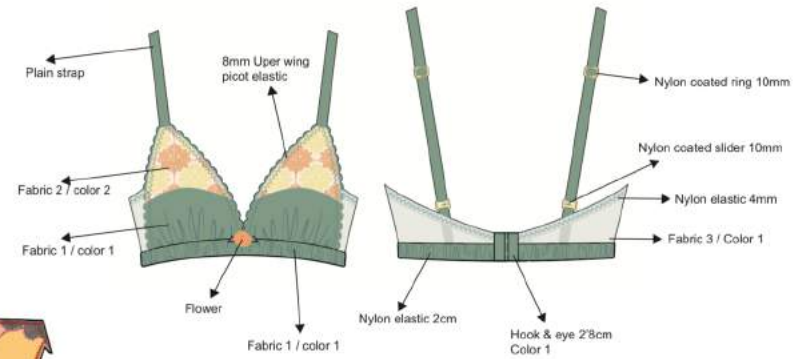
- Productos de fabricación en Marruecos → Repor x leucina
- Markup de 6 = marca java media / alta

Ficha técnica

SEASON: SS
SUPPLIER: AGENT PROVOCATEUR
DESIGNER: MARIONA SEIRA
DATE: 03-06-2020
LINE: WOMAN
GARMENT: BRA
REFERENCE: S/JTD01

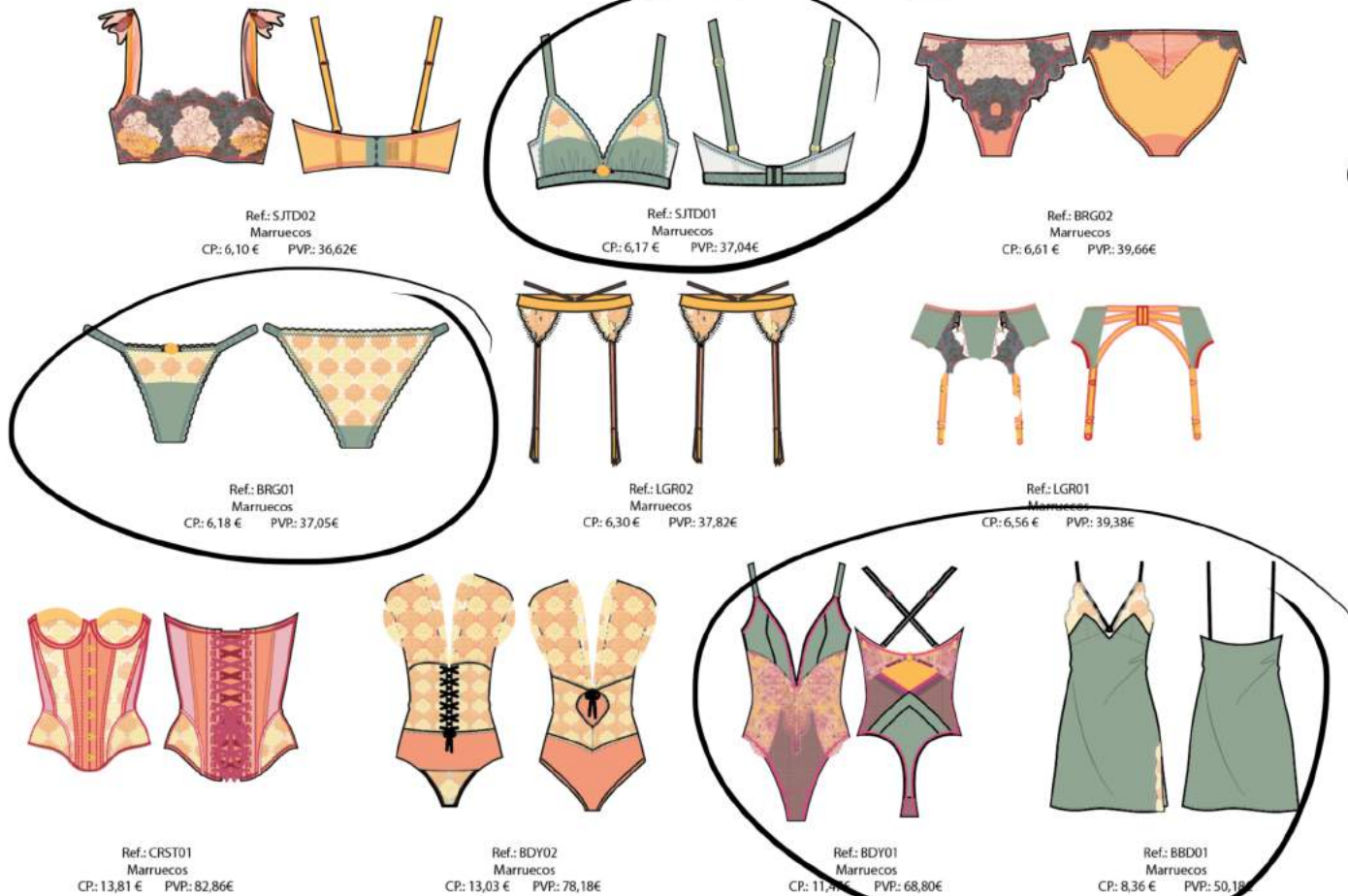
* Prendas clave

Planning colección



Escandallo:



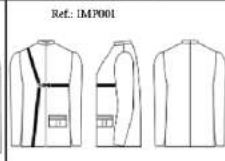
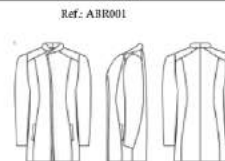
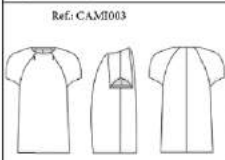

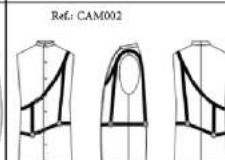


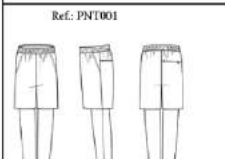



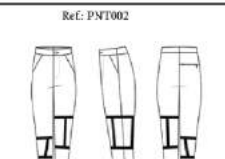
REF: S3TD01



	cost per meter	need	total price
Basic Satin	3.50	0.30	1.05
Floral lace	4.50	0.00	0.00
Simple lace	4.00	0.20	0.80
Fabric 1/1	1.80	0.00	0.00
Fabric 2	1.50	0.00	0.00
			0.20
Total			1.85
	cost per supplies	need	
Plain strap	0.08	0.00	0.08
Flower	0.12	1.00	0.12
Elastic	0.10	1.20	0.12
Picot Elastic	0.12	0.50	0.06
Supplies			0.26
Slider	0.03	2.00	0.06
Hook&Eye	0.04	1.00	0.04
Ring	0.03	2.00	0.06
Packaging	0.60	1.00	0.60
Total			1.12
	(price/minute)	(minutes)	
Minute Cost	0.10	15.00	1.50
Cutting	0.10	9.00	0.90
Out Work			0.30
Assembling	0.10	3.00	0.30
Finishing	0.00	0.00	0.00
Total			3.00
Grading Cost per piece / Need	0.10	2.00	0.20
Transport			0.05
Production Cost			6.17
Net Margin / Markup			3.80
Retail / Public Setting Price			17.04

Planning + sketchbook

Shade of torment man-collection

LOOK 1	LOOK 2	LOOK 3	LOOK 4	LOOK 5
Ref: BKR001  Ref: TJ011	Ref: BLZ002  Ref: TJ007 Ref: TJ013	Ref: IM7001  Ref: TJ010		Ref: ABR001  Ref: TJ007 Ref: TJ013
Ref: CAM003  Ref: TJ001	Ref: CAM002  Ref: TJ001	Ref: CAM002  TJ002	Ref: CAM001  Ref: TJ002	Ref: CAM001  Ref: TJ001
Ref: PNT001  Ref: TJ004 Ref: TJ005	Ref: PNT005  Ref: TJ007	Ref: PNT004  Ref: TJ006	Ref: PNT003  Ref: TJ003	Ref: PNT002  Ref: TJ003

