

HOSPITALITY DESIGN

hotel zen.

-- HOTEL ZEN --

The inspiration behind Hotel Zen is Sparkling Hill Resort located in Vernon, British Columbia.

-MOTIVE - MISSION -

Hotel Zen is designed to relax the mind as soon as you enter the space. There is zen energy all around.

The motive of hotel zen is to make you feel refreshed and at peace. As your stay comes to an end, you will physically and mentally feel refreshed and ready to go back home with a fresh mindset.

-HOTEL ZEN

hotel zen.

hospitality design

- location -
kelowna , british columbia

- client -
hotelier

- size -
approx. 1300 sq ft.

- softwares -
autocad
sketchup
photoshop



- HOTEL ZEN DESIGN INSPIRATION -

The inspiration behind the design of Hotel Zen is the location. The space is elevated upon the natural beauty all around it, a couples only destination.

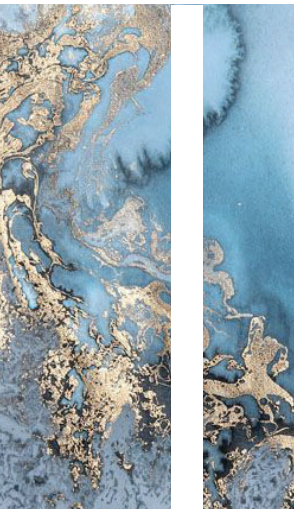
The color palette and materials used are precise and luxurious. The use of earthy tones and natural stones give all the Zen feelings.

Hotel Zen is amongst the beautiful vineyards of British Columbia, lakes and trails. Another indoor gem to the city of Kewlona.





inspiration b



oard.

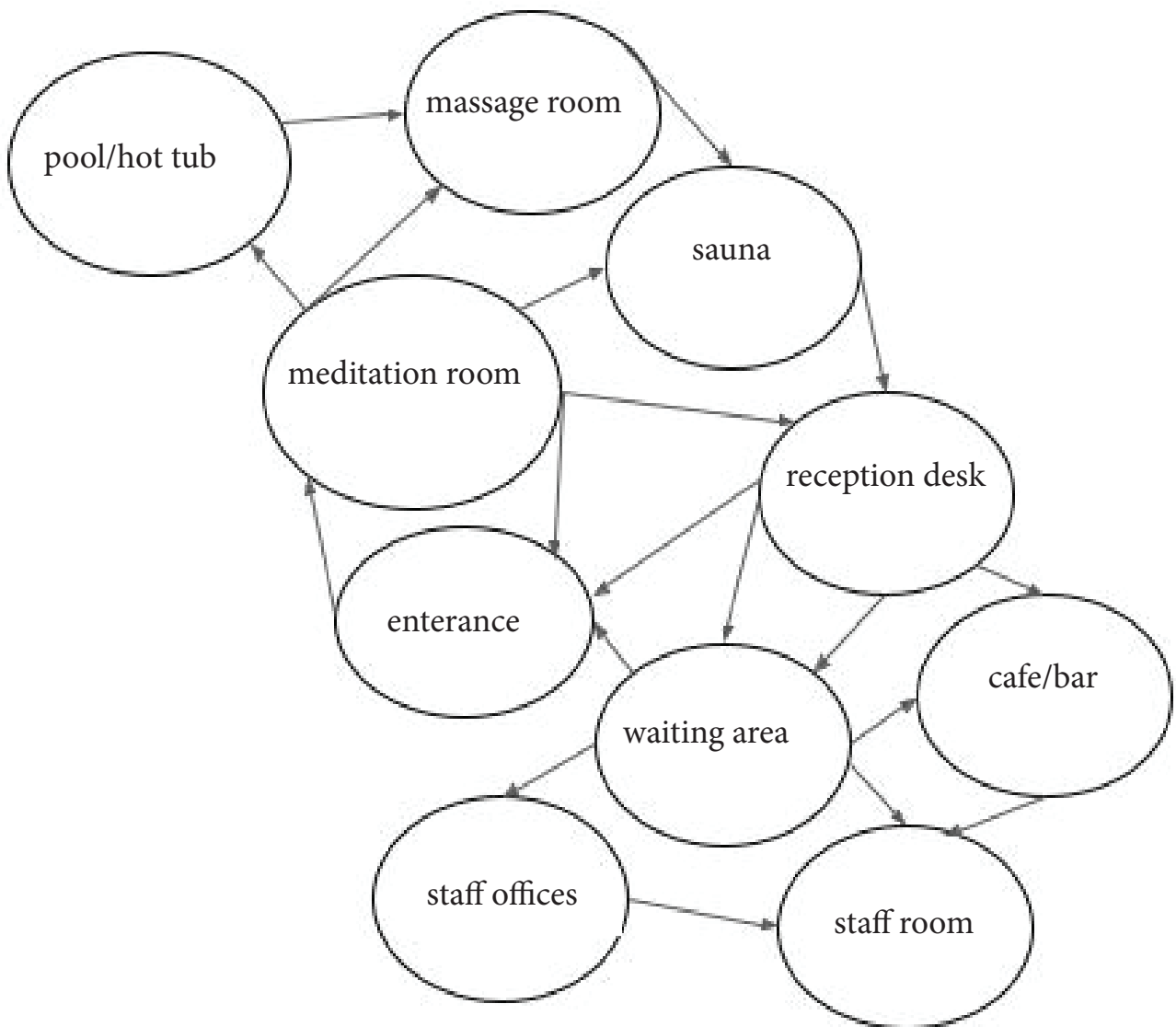
site analysis.

-hotel zen-

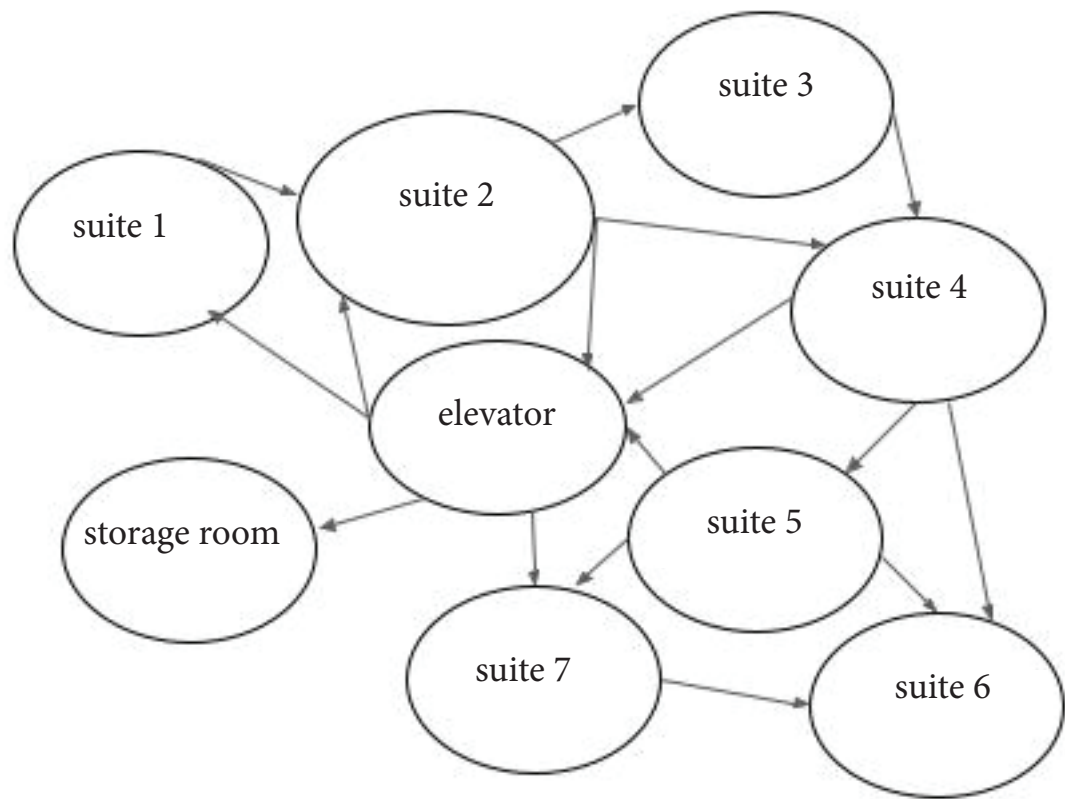
Hotel Zen is located in West Kelowna. It is amongst many other tourist attractions.

West Kewlona is approximately 380km from Vancouver. The atmosphere of the site is completely different as to Vancouver. You are sorrounded by nature and minimal traffic noise.

The site stands tall at the intersection of Water Street and Smith Avenue, Kewlona.



bubble diagram.
FIRST FLOOR



bubble diagram.
SECOND FLOOR

public spaces

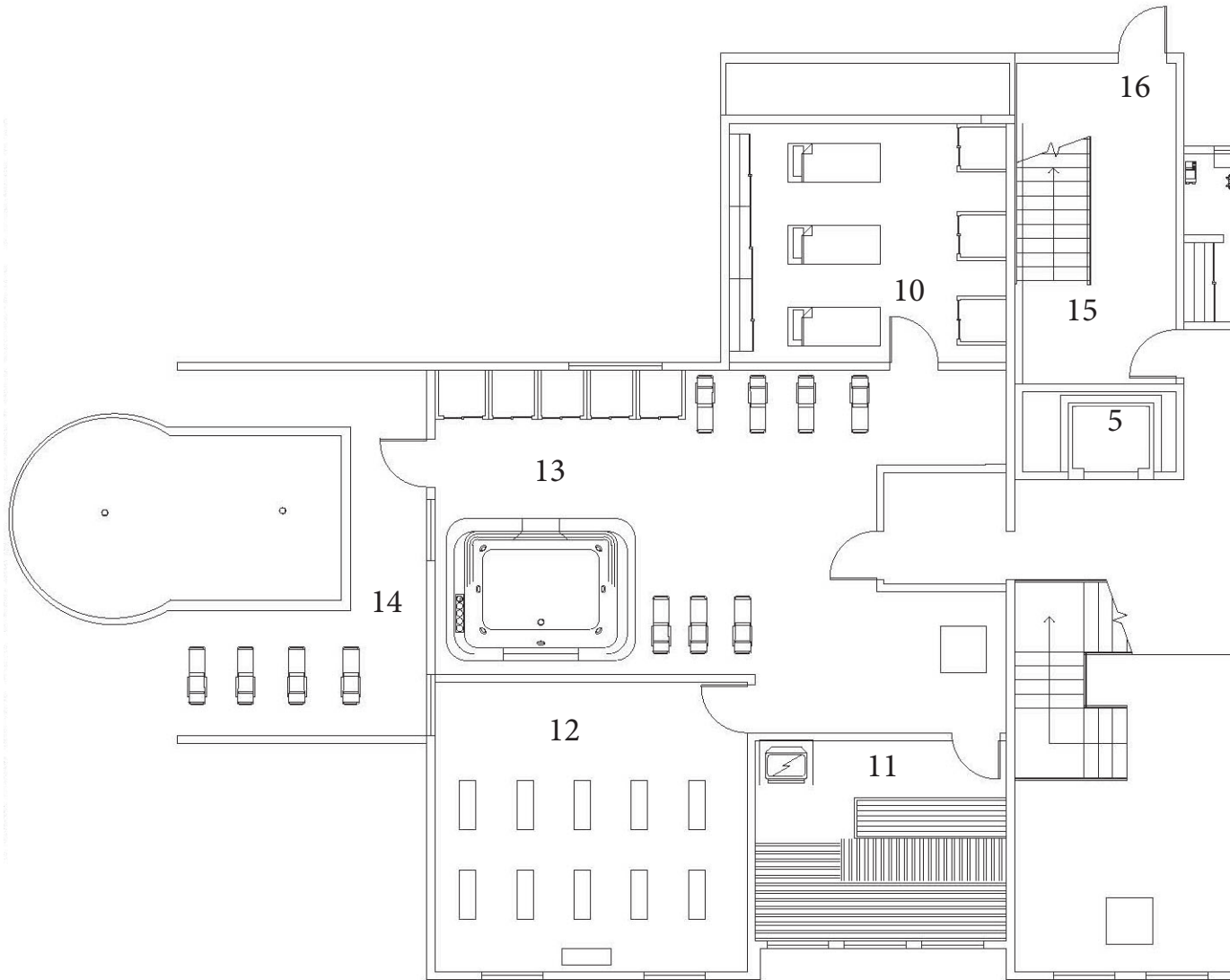
- entrance - waiting area - reception desk - cafe / bar - massage room -
pool / hot tub - meditation room - elevator -

work spaces

- reception desk - staff offices - staff room - storage room -

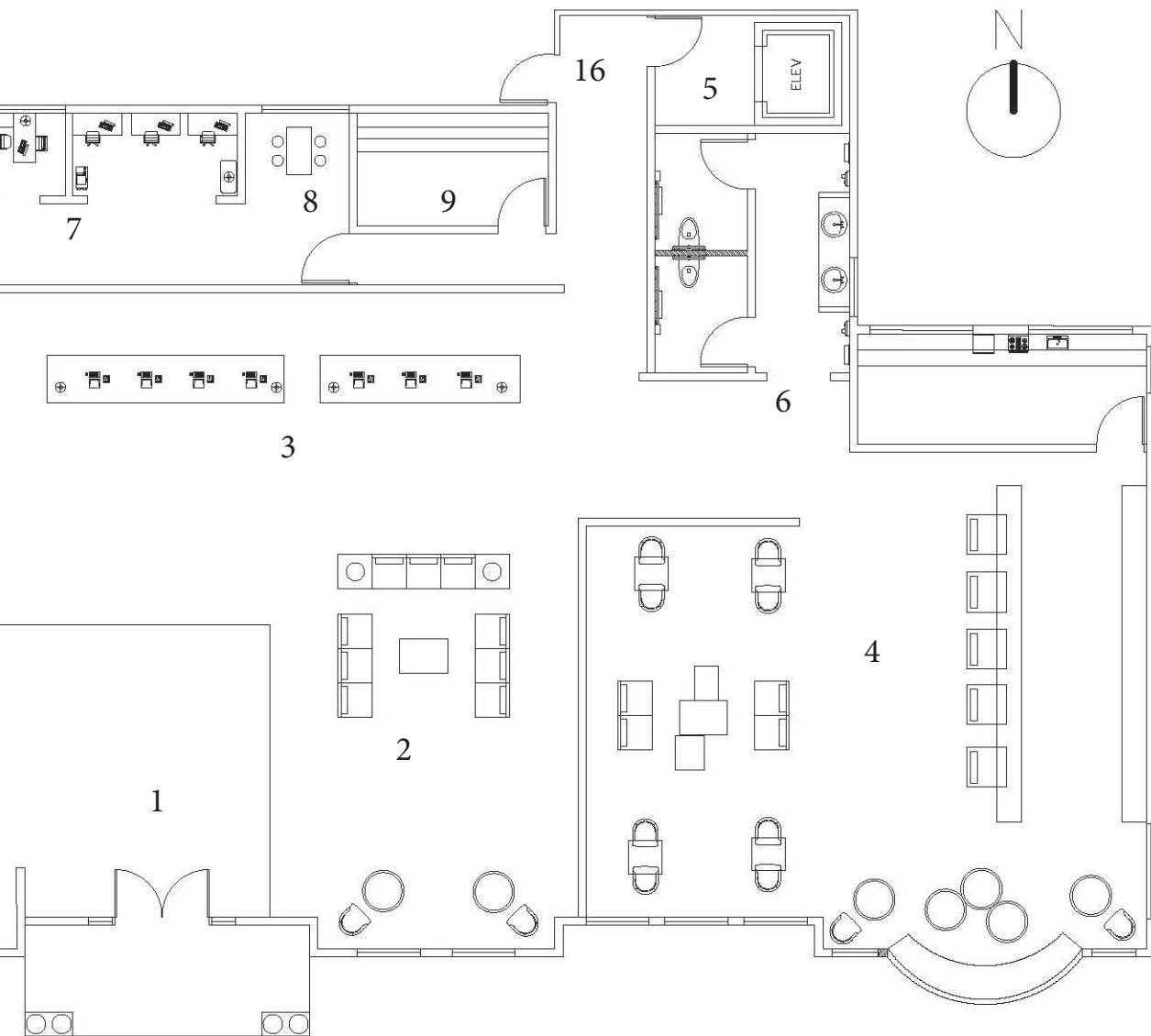
private spaces

- suites -



first floor

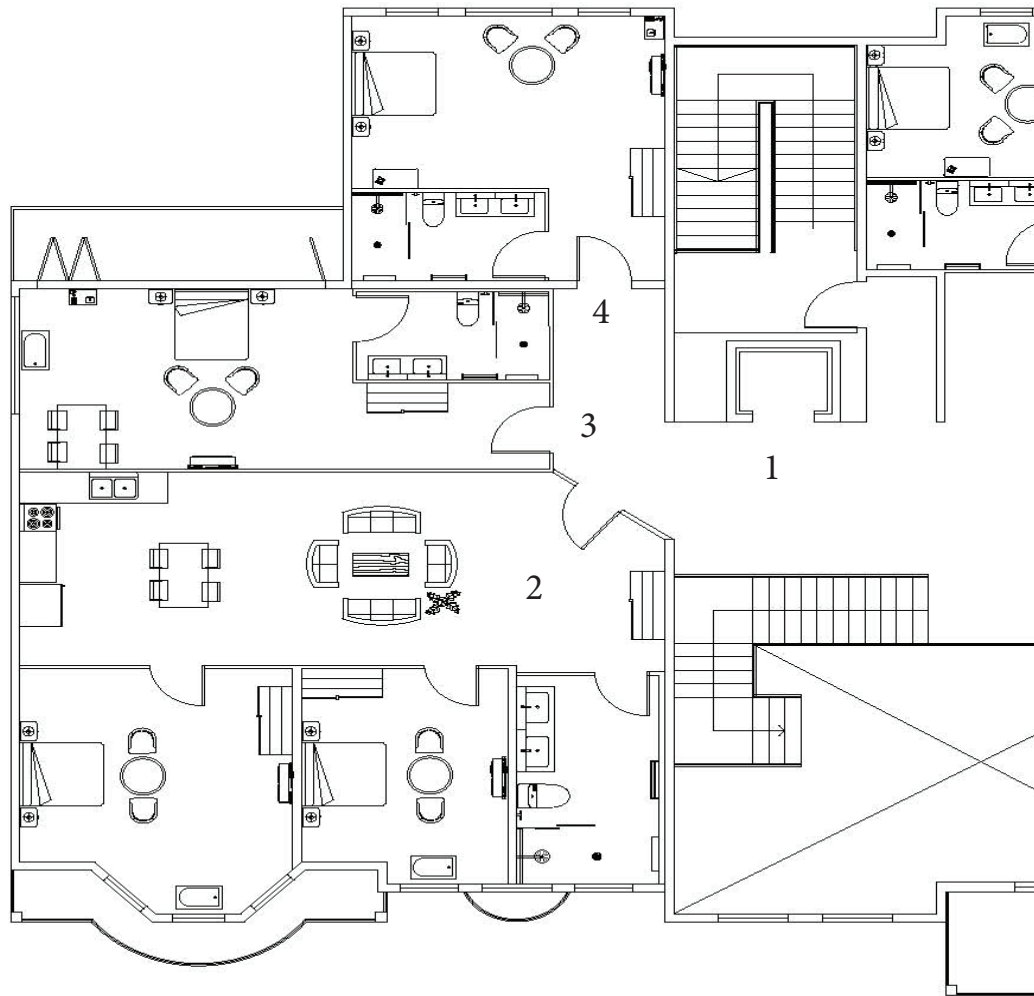
FLOOR PLAN



two story building

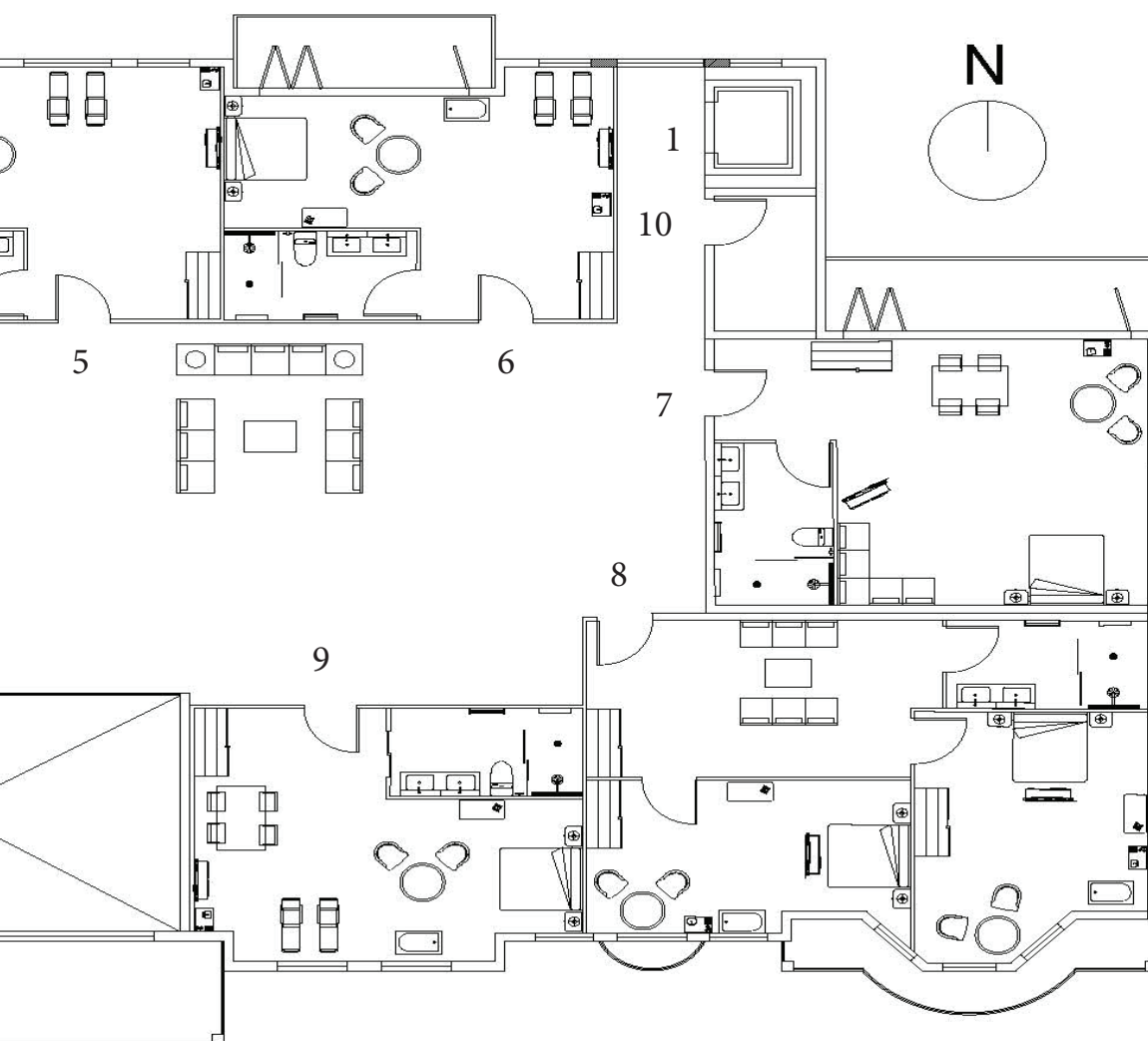
<< main floor >>

- | | | | |
|-------------------|-------------------|----------------------|-----------|
| (1) entrance | (6) washrooms | (11) sauna | (16) exit |
| (2) waiting area | (7) staff offices | (12) meditation room | |
| (3) recetion desk | (8) staff room | (13) hot tub area | |
| (4) cafe/bar | (9) storage room | (14) outdoor pool | |
| (5) evelator | (10) massage room | (15) stairway | |



second floor

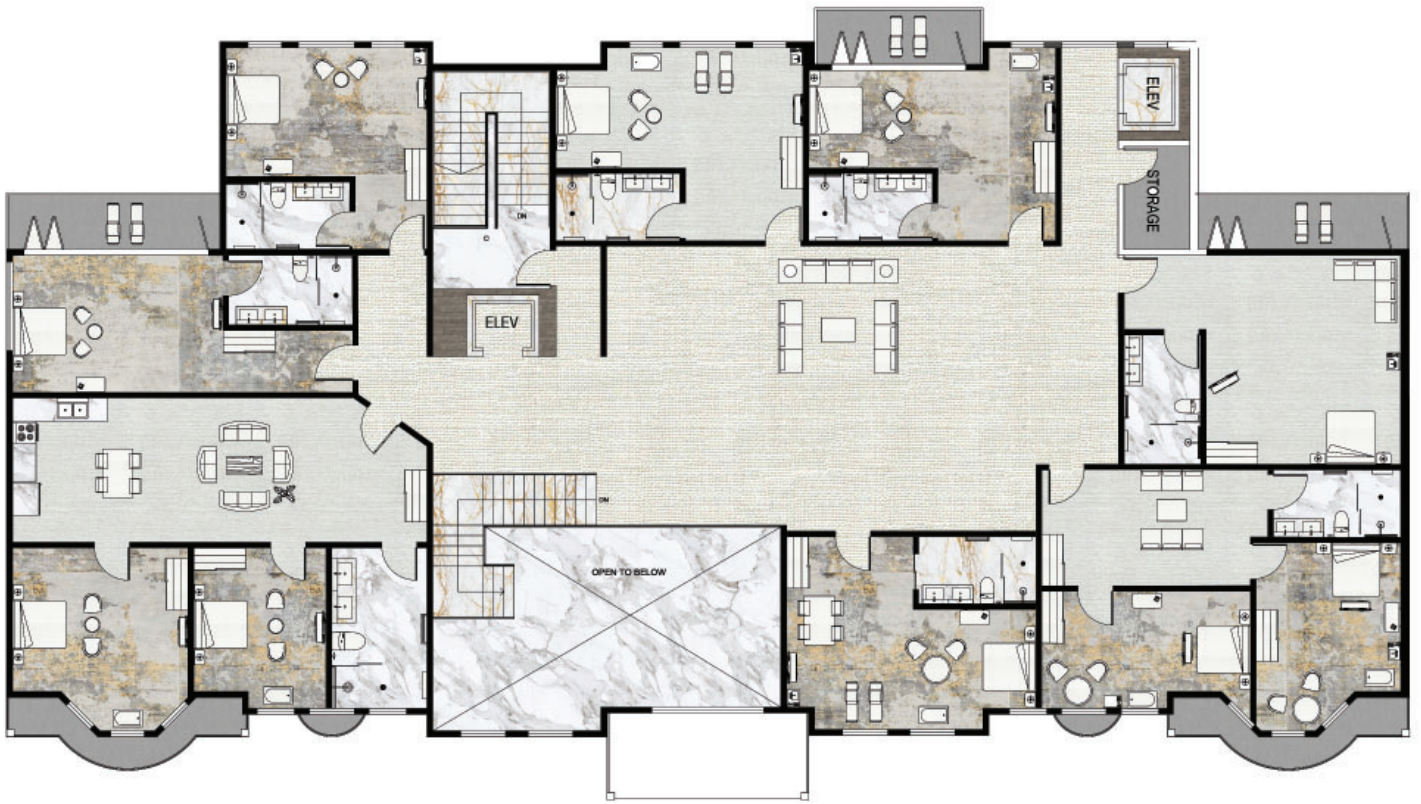
FLOOR PLAN



two story building

<< second floor >>

- | | | |
|--------------|-------------|-------------------|
| (1) elevator | (5) suite 4 | (9) suite 8 |
| (2) suite 1 | (6) suite 5 | (10) storage room |
| (3) suite 2 | (7) suite 6 | |
| (4) suite 3 | (8) suite 7 | |



rendered floor plan.



- carpet textile -
this textile has been used in the bedrooms



- marble material -
this material has been used in all the washroom floors



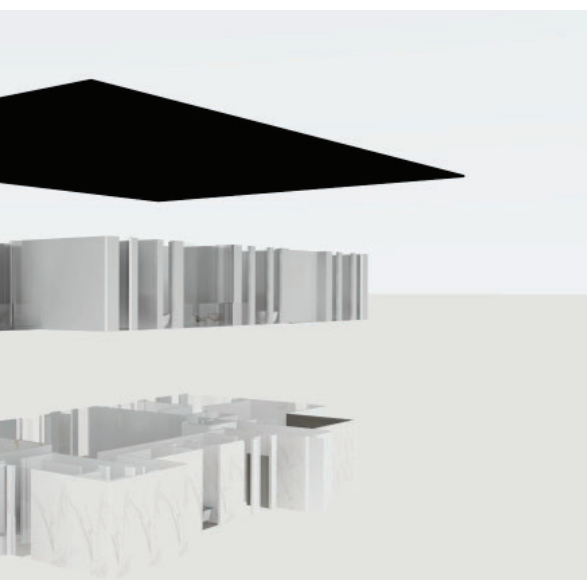
- carpet textile -
this textile has been used in the living space



- concrete material -
this material has been used on all the outdoor balcony's



expl
iso



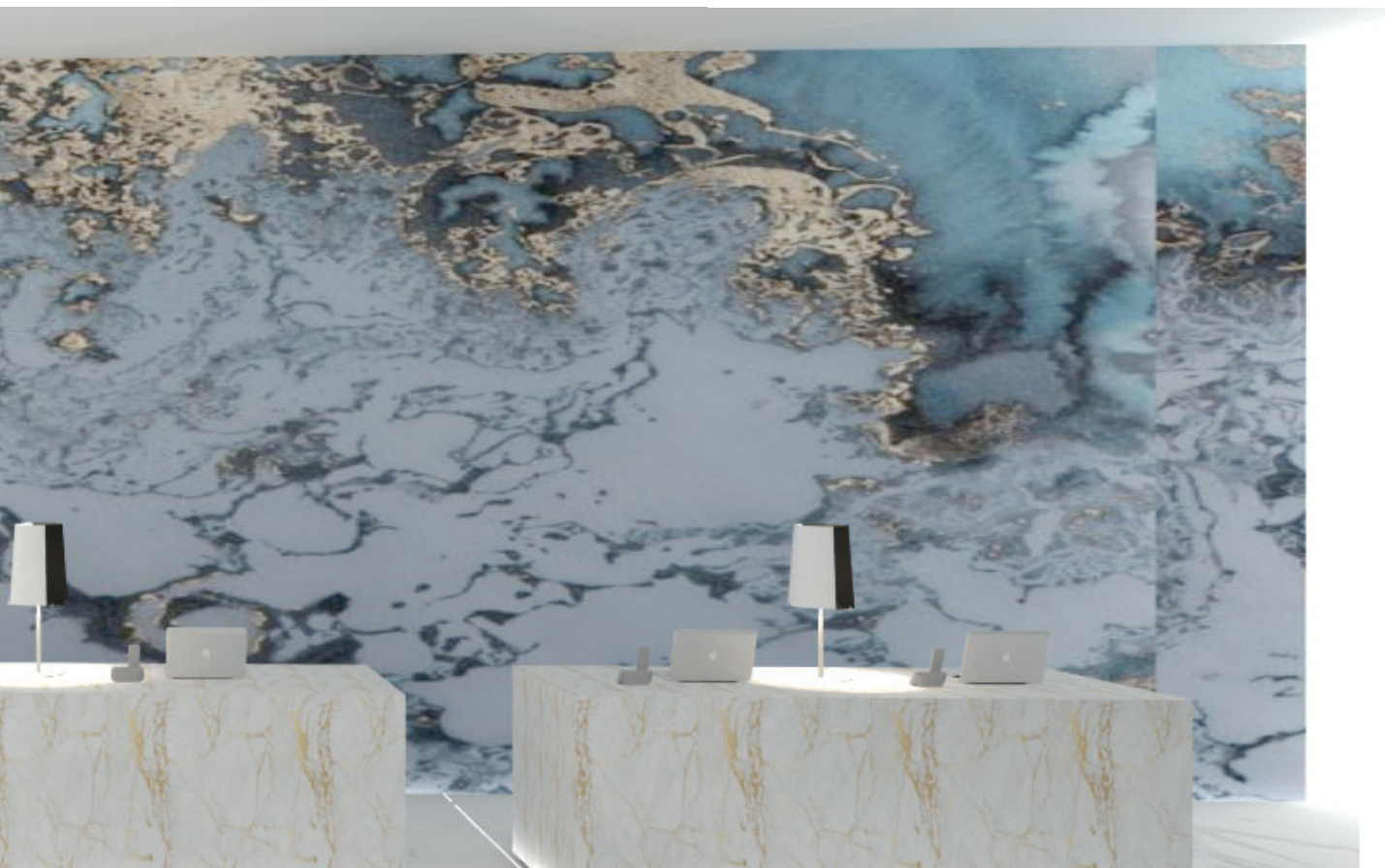
loded
metric





lobby waiting area

front desk





bedroom type 1



ensuite



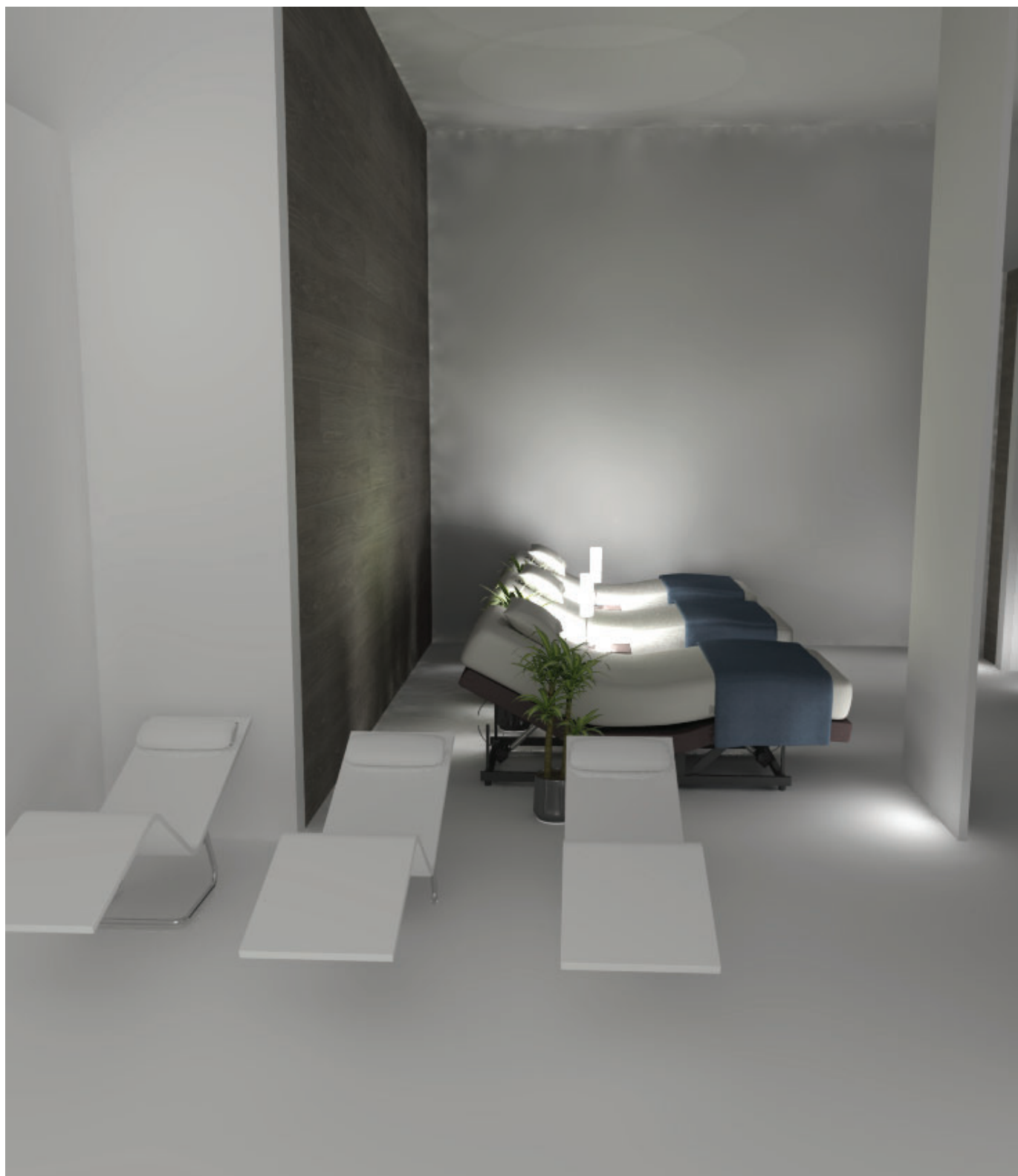
bedroom type 2



ensuite



meditation space



spa