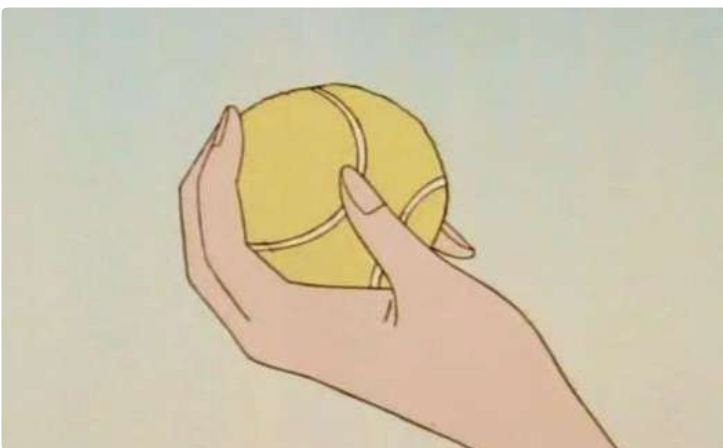
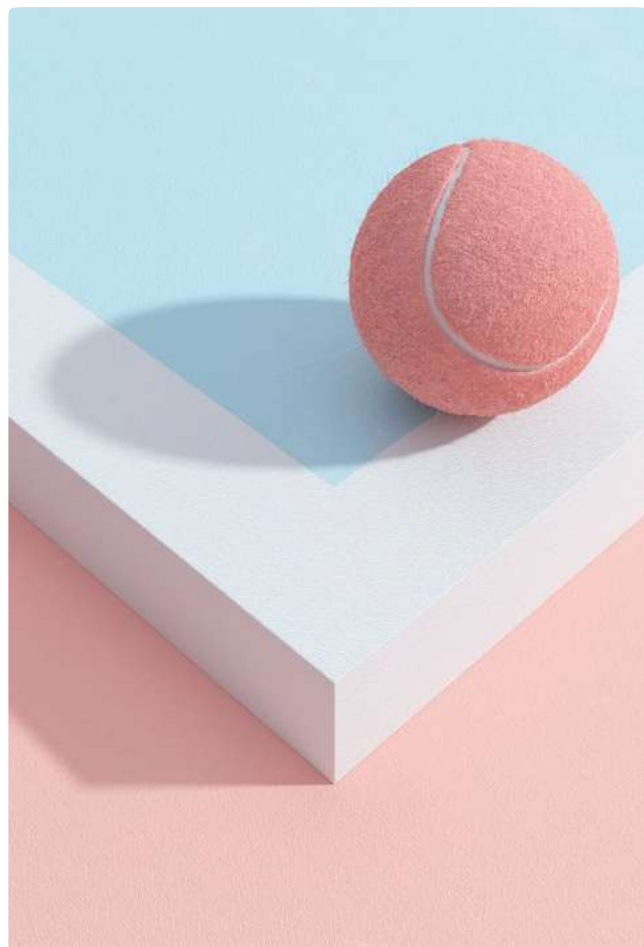


Berenice Neri  
Digital Illustration for Fashion

Instructor: Jing Liang  
Date: December 19, 2019

Soft Tennis  
Women Spring/Summer 2020  
Ready-To-Wear





# Rationale

This collection is inspired by tennis but primarily I would like this collection to be targeted towards young women in sports. The pastel colours displayed through the presentation are used to show a softer more feminine look in the whole collection. There are currently many great women in sports and I want this collection to be special in the way that they would feel comfortable dressing very feminine in a primarily male industry!



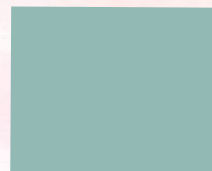
# Soft Tennis // S/S 2020



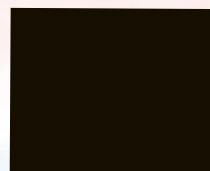
True Red



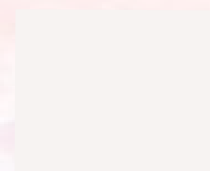
4011 UP



Comet Streak



Black C



9101 U

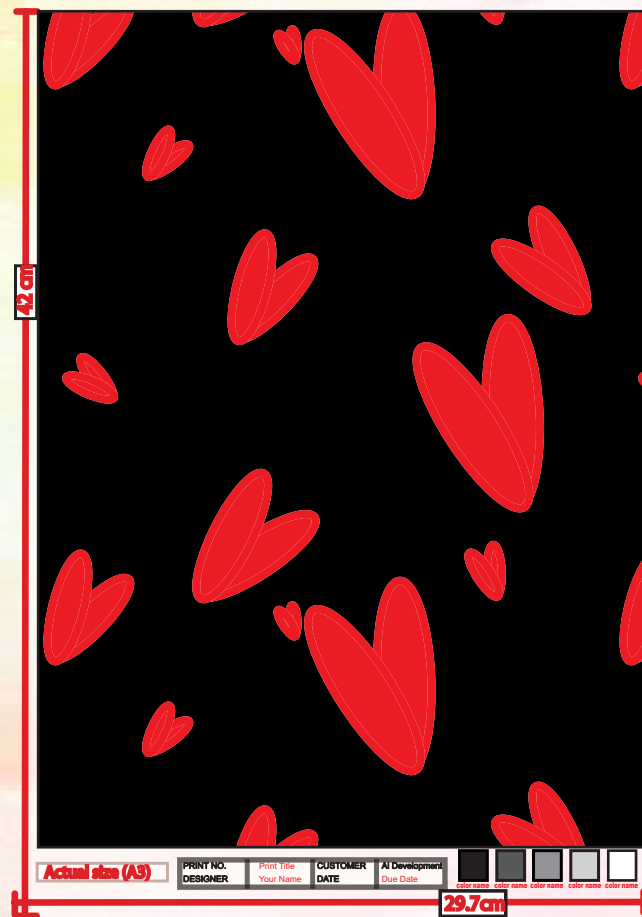


Chili Pepper

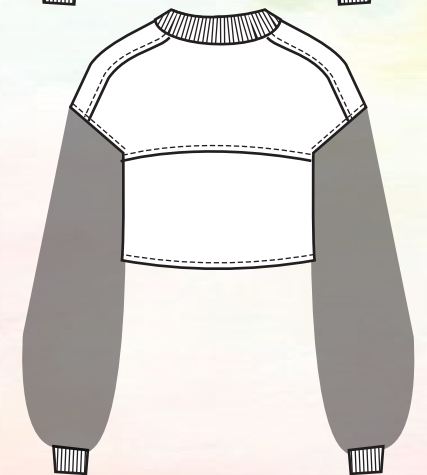
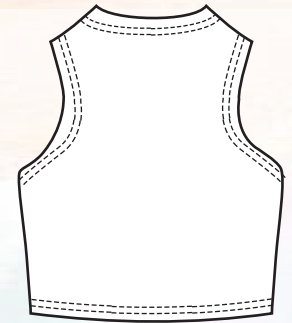
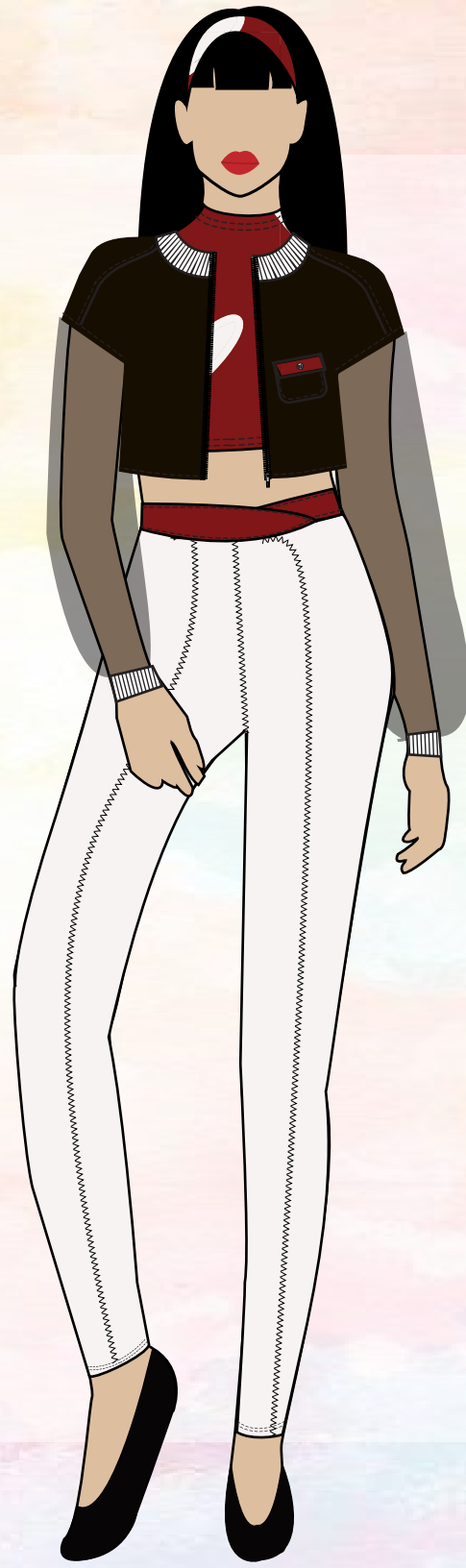


4014 U

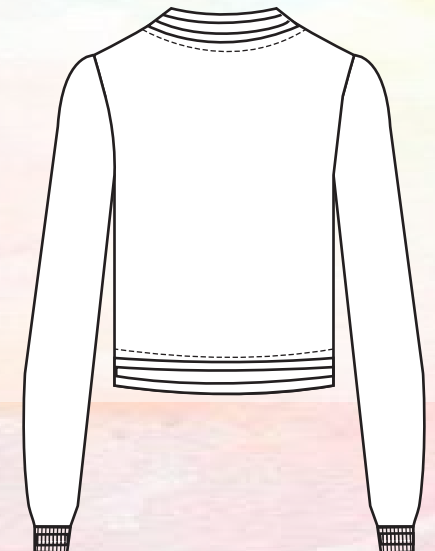
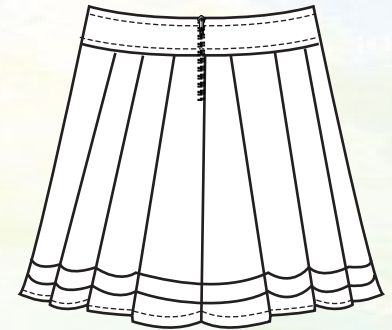
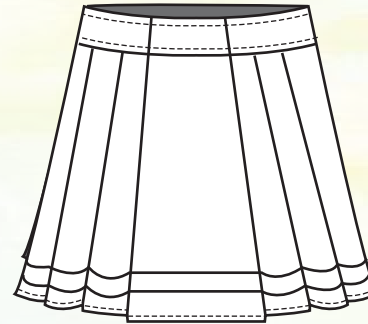
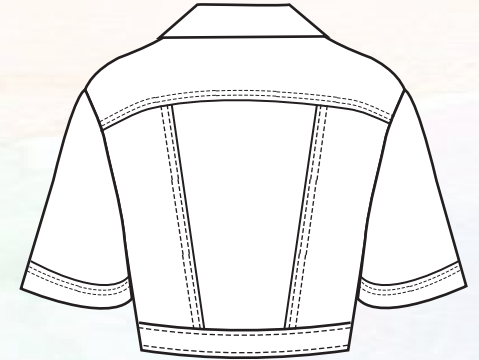
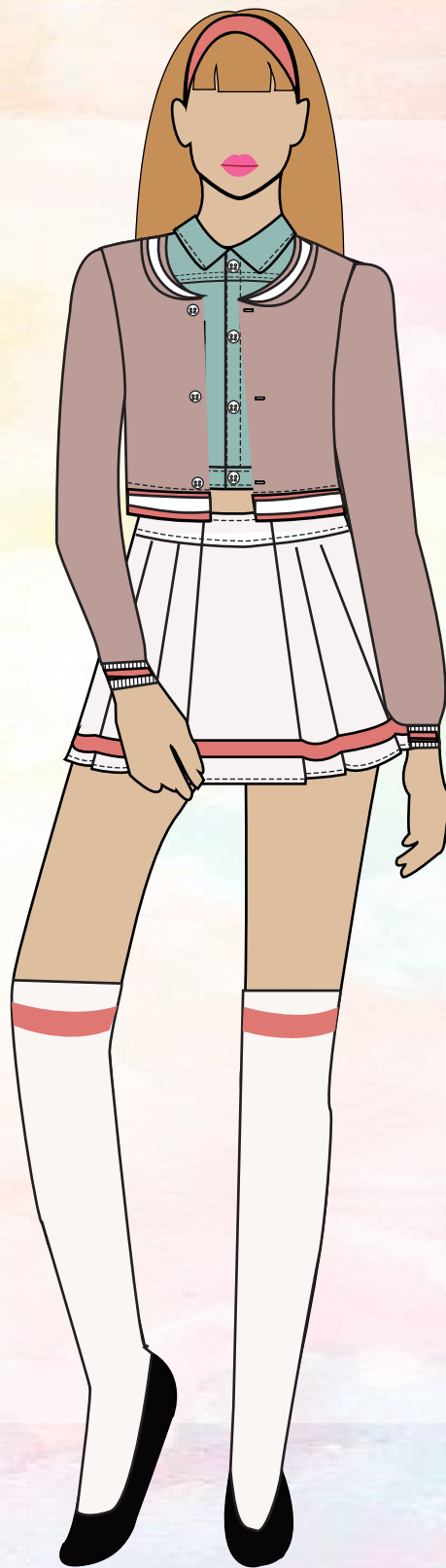
## Pattern



# Soft Tennis // S/S 2020







# Soft Tennis // S/S 2020

