



KITHEAM COLLECTION
ALEXANDER WANG **ALEX ESCOBAR ESPINACH**
PH



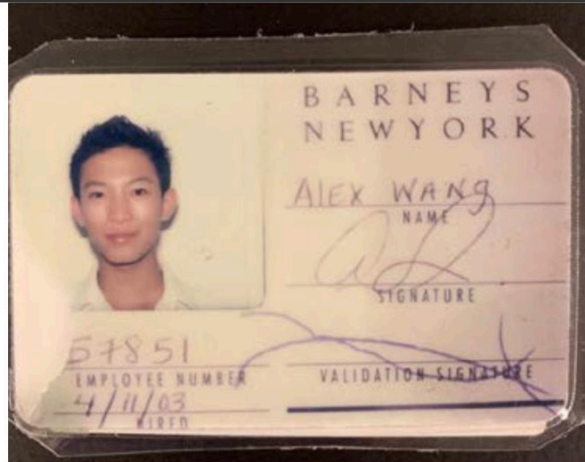
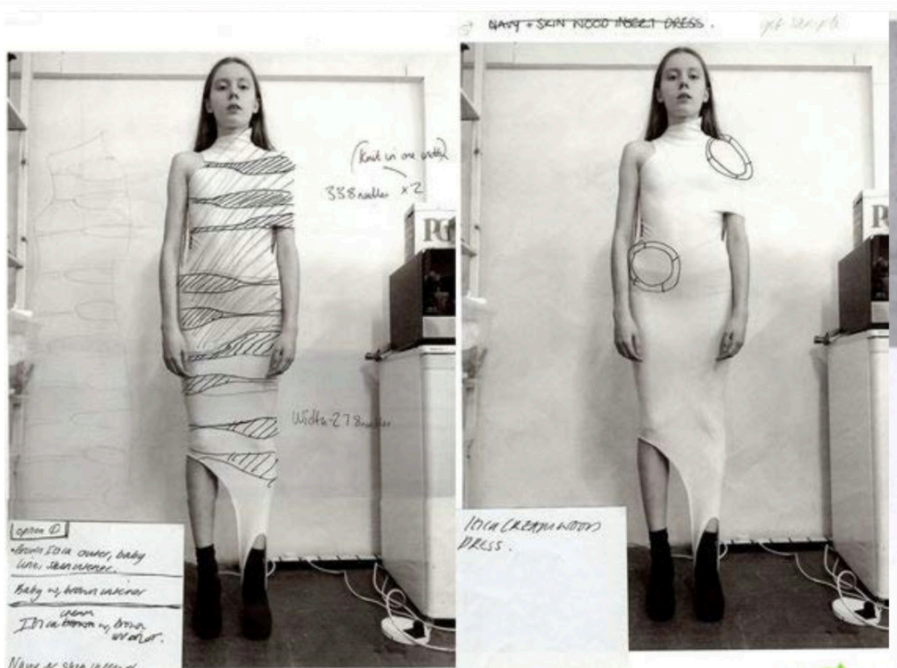
partial knitting

intarsia
& rib knit

STRUCTURES



openworks

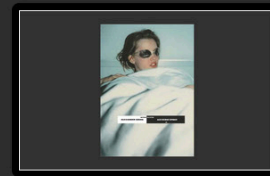


SPRING 2018
PHOTOGRAPHED BY ALBERT WATSON

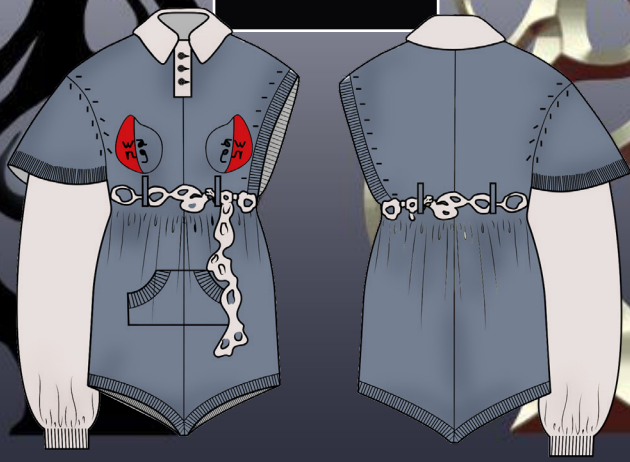


The sensibility of the brand is reflected through the undone. The contradiction that lies between imperfection and refinement, taking as the main inspiration and reference from the idea of the everyday uniforms.

CROPPED TANK WORN BY BEHATI PRINSLOO



alexanderwang



ALEXANDER WANG X ALEX ESCOBAR

19-05-20

description

Straight overall with single double sleeve, with plain knitted polo collar with 3 buttons, 2x2 rib right armhole, hem and pocket sides, 2x2 ribbed cuff on the left sleeve, plain knitted belt-loops and jacquard on both chest sides of 10x8cm.

TRIMMINGS:
Polo collar with tubular binding.
Plain knitted (double) trims in placket. 2x2 rib knitted (double) trims in armhole, pockets and hem.

technical sheet

J0-03

SEASON:

TECHNICAL DETAILS:

GAUGE: %

COMPOSITION:

Merino wool: px

Polyester: px

Structure

PLAIN KNIT
2x2 RIB

COLOR 1: %

COLOR 2: %

